

VINTAGE 2025
WORLD PREMIERE PRODUCTION



Pittsburgh
CLO

In association with
42ND PARALLEL PRODUCTIONS

MADAME
CLICQUOT

A REVOLUTIONARY MUSICAL

SPONSORED BY
CAROL
HEFREN
TILLOTSON

BOOK, MUSIC & LYRICS
LISETTE GLODOWSKI & RICHARD C. WALTER

#PCLOMadameClicquot | @PittsburghCLO

WE WELCOME YOU TONIGHT FOR THE

MADAME CLICQUOT

A REVOLUTIONARY MUSICAL

WORLD PREMIERE

Cheers!

THE WILSON FAMILY

JASON, LEAH, JASON JR.,

AVA & MARIA

*Broadway
Bound
Gala*

SPONSORED BY:

Jason & Leah Wilson
AND THE WILSON FAMILY

PITTSBURGH CLO BOARD OF DIRECTORS



OFFICERS



Joseph V. DiVito, Jr.
CHAIRMAN OF THE BOARD



Edward T. Karlovich
PRESIDENT

HONORARY CHAIRMAN OF THE BOARD

Julie Andrews

CHAIRMAN OF THE BOARD

Joseph V. DiVito, Jr.

PRESIDENT

Edward T. Karlovich

VICE PRESIDENTS/ CABARET THEATER

John Dick
Meghan Barrera
Leah Ohodnicki

VICE PRESIDENT/ CLO AMBASSADORS

Christy Kobus

VICE PRESIDENT/ CONSTRUCTION CENTER & FACILITIES

Nicholas J. Liparulo
Deedra Knaus

VICE PRESIDENTS/ DEVELOPMENT

Mark J. Minnaugh
Laurie M. Mushinsky

VICE PRESIDENTS/ EDUCATION

Christine M. Kobus
George Gans

VICE PRESIDENTS/ FINANCE

Timothy K. Zimmerman
Brian Koble
Richard J. Lipovich

VICE PRESIDENTS/ HUMAN RESOURCES

Lesley Evancho

VICE PRESIDENTS/ MARKETING

Jon Galatis
Leah Ohodnicki

VICE PRESIDENTS/PRODUCTION, NEW WORKS DEVELOPMENT & FUNDING

Peter J. Germain
Dennis Unkovic
Stephen S. Bloomburg

VICE PRESIDENTS/ NOMINATING

Scott F. Neill
Glenn D. Todd

VICE PRESIDENTS/ PLANNING

Luke A. Sizemore
LaShawnda Thomas

VICE PRESIDENTS

Pritam Advani
Daniel I. Booker
Sherri Grasak
Richard S. Hamilton
Laura Penrod Kronk

SECRETARY

Johanna G. O'Loughlin

TREASURER

Richard J. Lipovich

PRESIDENT OF THE BOARD EMERITUS

Robert C. McCartney

EXECUTIVE PRODUCER EMERITUS

Van Kaplan

CORPORATE COUNSEL

James M. Doerfler

CHAIRMAN OF THE BOARD EMERITUS

Louis D. Astorino
Daniel I. Booker
Helen Hanna Casey
George A. Davidson, Jr.
Joseph C. Guyaux
William M. Lambert
Alexander Overstrom
James E. Rohr

DIRECTORS

Joyce A. Bender
Patricia M. Blenko
Chris Brussalis
Jane Dixon
Clare Donahue
Gus Engel
Paul Hennigan

Leslie Hyde
Brian Koble
Deedra Knaus
Diane B. Landers
Nicholas J. Liparulo
Margaret McLean
Timothy M. McVay

Christina P. O'Toole
Robin S. Randall
Eric A. Schaffer
Gregg Schmidtetter
Arlene Sokolow
Helen Spalaris
LaShawnda Thomas

Joann L. Tissue
The Honorable
Debra Todd
Carla J. Vrsansky
Jake Wheatley, Jr.

ADVISORY BOARD

George Ator

Joan Bogut

Charles R. Fallon

Rosemarie R. Parse, Ph.D.

Melvin D. Rex



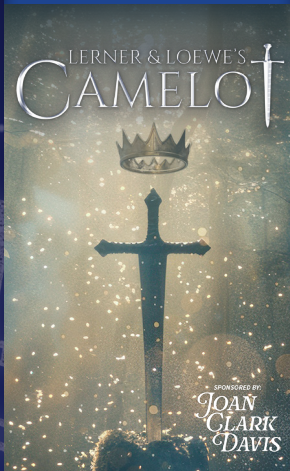
CELEBRATING MUSICAL THEATER

SUMMER 2025

FROM THE SILVER SCREEN TO THE STAGE

 PNC SUMMER OF MUSICALS

ROMANCE



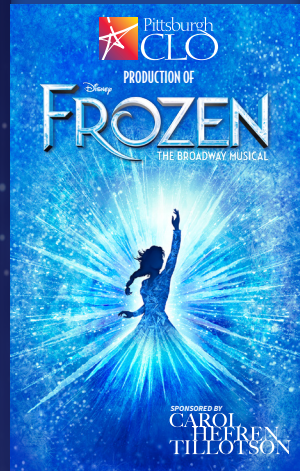
JUNE 17 - 22

ADVENTURE



JULY 1 - 6

MAGIC



JULY 18 - 27

JOIN US AT THE
BENEDUM CENTER!

ALL SHOWS
ON SALE
NOW!

PITTSBURGH CLO  412-456-6666

Groups 10+ SAVE! Call 412-471-6930





Dear Friends,

Welcome to the world premiere of **MADAME CLICQUOT: A Revolutionary Musical**.

We are proud to pop the cork on a story that deserves the spotlight. Barbe-Nicole Ponsardin Clicquot was a visionary, an entrepreneur, and a force of nature. At a time when women were rarely allowed a seat at the table, let alone the head of it, she boldly took charge of a struggling wine business and built the legendary champagne house we know today. Her journey – filled with risk, resilience, romance, and innovation, proves that greatness is forged under pressure and perfected with age, just like a fine vintage.

Pittsburgh CLO is especially proud to bring *MADAME CLICQUOT* to life in association with 42nd Parallel Productions. This type of partnership, and the enhancement funding it provides, allows us to develop new musicals and give them the sparkle and stage they need. What began as a concert reading now bursts forth in full theatrical bloom, with sights set on Broadway, the West End, and beyond. When this musical makes its next debut, you will be able to say you experienced the talents of this young writing team, Lissette Glodowski and Richard C Walter, at the show's world premiere in Pittsburgh.

Every young performer on stage is a student of the Pittsburgh CLO Academy for Musical Theater. If you know a young person ready to shine, please explore our Summer Camp offerings, where students of all levels train with working professionals and discover their creative spark. It's a joyful way to introduce the next generation to the performing arts. Learn more at PITTSBURGHCLO.ORG/EDUCATION

The celebration continues this summer with our 2025 PNC Summer of Musicals at the Benedum Center: Lerner & Loewe's *CAMELOT* (June 17–22) sponsored by Joan Clark Davis, *BACK TO THE FUTURE: The Musical* (July 1–6), and Pittsburgh CLO's production of Disney's *FROZEN* (July 18–27) sponsored by Carol Hefren Tillotson. Each show will bring romance, adventure, and pure theatrical magic to the stage.

Like Madame Clicquot herself, Pittsburgh CLO is rising to meet the moment. In a time of challenge and change, we remain committed to creating something worth toasting — bold new work, joyful experiences, and shared memories that unite generations. As with any fine vintage, greatness takes time, care, and community support. By joining the generous donors listed in this playbill, you help keep that legacy alive — fueling more celebrations, more standing ovations, and more opportunities for tomorrow's artists to take center stage. Raise a glass with us and make your gift today at PITTSBURGHCLO.ORG/DONATE

Cheers,

Mark Fleischer
Executive Producer
ExecutiveProducer@PittsburghCLO.org



Celebrating the brilliance of Pittsburgh.

It takes dedication, hard work, and a smart and steady approach to help a community thrive. That's why PNC is proud to celebrate the Pittsburgh CLO for all it does to help make our community brilliant.



**BRILLIANTLY
BORING
SINCE 1865™**

Brilliantly Boring since 1865 is a service mark of The PNC Financial Services Group, Inc.
©2025 The PNC Financial Services Group, Inc. All rights reserved.
PNC Bank, National Association. **Member FDIC.**

CAROL HEFREN TILLOTSON



Dear Patrons and Supporters of the Arts,

Good Evening and welcome to Pittsburgh CLO's world premiere of **MADAME CLICQUOT: A Revolutionary Musical!** It gives me great pleasure to support this remarkable new work and the organization behind it, one that has meant so much to me and my family for nearly eight decades.

When I was a mere teenager, I fell in love with CLO. Attending performances of those earliest musicals at Pitt Stadium with my father, or a generous date, are among my most cherished memories. My late husband, Bill, grew up in a music centered family and shared my love of Musical Theater. Every family excursion, singing initiated by Bill, included "You Are My Sunshine" and "Edelweiss." This love was passed on to our children – Sharon, Craig, and Kim - and now to our grandchildren. Pittsburgh CLO has always been a part of our lives and holds a special place in my heart.

Supporting this production was important because I believe in what Pittsburgh CLO stands for. It's a place where world-class musical theater is created right here in our city, by and for our community. That's something worth protecting. Like so many arts organizations, Pittsburgh CLO has faced its share of challenges in recent years. But to me, times like these are when it matters most to show up and help ensure a bright future for generations to come.

Becoming the Presenting Sponsor of this production is the result of my need to help carry this legacy forward. It also reflects my pride in the Hefren Tillotson name and everything it has stood for in Pittsburgh for generations: family, service, and community. My hope is that others who feel the same way about this city and the importance of the arts will join me in supporting this treasured institution.

Thank you for being here. I hope tonight's performance moves you, inspires you, and reminds you just how vital locally produced musical theater is to the cultural fabric of Pittsburgh and its surrounding communities.

With warm regards,

A handwritten signature in black ink that reads "Carol Tillotson". The script is elegant and cursive, with a large initial 'C'.

Carol Hefren Tillotson
Pittsburgh CLO Donor
Presenting Sponsor of **MADAME CLICQUOT: A Revolutionary Musical**

Your best self is just ahead.

And nothing should hold you back from getting there. Highmark Blue Cross Blue Shield has added **over 6,000 virtual and in-person therapists** so that everyone can get the right care, right away.

Get started at [BecauseLife.com](https://www.BecauseLife.com).



Access to in-person therapists where available.

Benefits and/or benefit administration may be provided by or through the following entities, which are independent licensees of the Blue Cross Blue Shield Association: Highmark Inc. d/b/a Highmark Blue Cross Blue Shield, Highmark Choice Company, Highmark Health Insurance Company, Highmark Coverage Advantage Inc., Highmark Benefits Group Inc., First Priority Health, First Priority Life or Highmark Senior Health Company. Your plan may not cover all your health care expenses. Read your plan materials carefully to determine which health care services are covered. For more information, call the number on the back of your member ID card or, if not a member, call 866-459-4418. 04/25 MX4862656

THEATER CONNECTS THE WORLD. SO DO WE.

Just like the Pittsburgh CLO, we're passionate about bringing people together, creating meaningful moments and inspiring new heights.

Delta is proud to be the official airline partner of the Pittsburgh CLO.



KEEP CLIMBING



The background of the advertisement is decorated with several stems of roses in various shades of red and pink, with green leaves. The roses are scattered across the white background, framing the central text.

60 YEARS

of Bringing
Down the House

As we celebrate our diamond anniversary, we're exceedingly grateful for all our customers both past and present. Please know that we're as devoted as ever to delivering a sales and service experience that wows you again and again.

#1 Cochran **GO 1 BETTER**
cochran.com

Official Vehicle Provider for Pittsburgh CLO

AUDI | INFINITI | CADILLAC | MERCEDES-BENZ | BUICK | GMC | NISSAN | CHEVROLET | VOLKSWAGEN
TOYOTA | FORD | HONDA | SUBARU | MAZDA | KIA | HYUNDAI | CHRYSLER | JEEP | DODGE | RAM

MAY 29 - JUNE 08, 2025



MARK FLEISCHER, *Executive Producer*
In association with 42ND PARALLEL PRODUCTIONS
Presents

MADAME CLICQUOT

A REVOLUTIONARY MUSICAL

BOOK, MUSIC, AND LYRICS BY
LISETTE GLODOWSKI AND **RICHARD C. WALTER**

AT THE **BYHAM THEATER**

STARRING

VICTORIA FRINGS • PAOLO MONTALBAN
CHRISTIAN THOMPSON • STEVE BLANCHARD • JONATHAN CHRISTOPHER
JOSEPH DOMENCIC • KYLIE EDWARDS • NICK LAUGHLIN

WITH

DALTON BERTOLONE • KAI AN CHEE • JORDAN T. DELEON
MICHAEL GREER • MATTHEW HYDZIK • MEREDITH INGLESBY • ISABEL KRUSE • JILLIENNE LEIGH
PARIS MARTINO • ERIN MCMILLEN • J. ALEX NOBLE • MAILE ORAVITZ • GRANT PACE • TONYIA M. RUE • RONAN RYAN
KAI SACHON • ERIC SORRELS • SANTINA UMBACH • MAXINE WARREN • LUNA B. BAKER • NORAH KULICK
MARIANA MANGUAL • ARIA MEINERT • HARRISYN SCHILPP • HENRY THOMAS

SCENIC DESIGNER LIGHTING DESIGNER COSTUME DESIGNER
HOLLY M. BREUER **PAUL MILLER** **JANET GROOM CAMPBELL**

SOUND DESIGNER HAIR AND MAKEUP DESIGNER PROJECTION DESIGNER PRODUCTION STAGE MANAGER
SAM SILVA **SHERRY DEBERSON** **MARK CIGLAR** **PAMELA BRUSOSKI**

CASTING FIGHT DIRECTOR
GEOFF JOSSELSO CASTING **RANDY KOVITZ**

ARRANGEMENTS & ORCHESTRATIONS BY
FRANK GALGANO & MATT CASTLE

MUSIC DIRECTOR
KENNETH GARTMAN

DIRECTOR & CHOREOGRAPHER
LAURIE GLODOWSKI

The Director is a member of the STAGE DIRECTORS AND CHOREOGRAPHERS SOCIETY, a national theatrical labor union.

Select Costumes provided by **COSTUME WORLD THEATRICAL**, Pompano Beach, FL. www.costumeworld.com

MADAME CLICQUOT: A REVOLUTIONARY MUSICAL is presented through special arrangement with 42nd Parallel Productions.

All authorized performance materials are also supplied by 42nd Parallel Productions.

www.42ndparallelproductions.com

THE VIDEOTAPING OR MAKING OF ELECTRONIC OR OTHER AUDIO AND/OR VISUAL RECORDINGS OF THIS PRODUCTION OR DISTRIBUTING RECORDINGS ON ANY MEDIUM, INCLUDING THE INTERNET, IS STRICTLY PROHIBITED, A VIOLATION OF THE AUTHOR'S RIGHTS AND ACTIONABLE UNDER UNITED STATES COPYRIGHT LAW.

Pittsburgh CLO is a founding member of the National Alliance for Musical Theatre,
Independent Presenters Network and The Broadway League.



JOAN CLARK DAVIS

IS A PROUD SUPPORTER OF PITTSBURGH CLO &

THE BROADWAY BOUND GALA

CHEERS, AND ENJOY THE SHOW!

A close-up, high-angle shot of a champagne bottle being poured into a glass. The bottle is tilted, and a thick stream of golden champagne is captured mid-pour, splashing and creating a large, intricate spray of bubbles and foam. The background is dark green with small, glowing bokeh lights. The bottle and glass are partially visible, with the focus on the dynamic movement of the liquid.

MADAME
CLICQUOT

A REVOLUTIONARY MUSICAL



MADAME CLICQUOT - CAST

Barbe-Nicole Clicquot Ponsardin.....	Victoria Frings*
François Clicquot.....	Christian Thompson*
Louis Bohne.....	Paolo Montalban*
Jean-Rémy Moët.....	Jonathan Christopher*
Clémentine Ponsardin.....	Kylie Edwards*
Napoleon Bonaparte.....	Nick Laughlin*
Philippe Clicquot.....	Joseph Domencic*
Nicolas Ponsardin.....	Steve Blanchard*
Young Barbe-Nicole.....	Mariana Mangual ⁺
Young François.....	Harrisyn Schilpp ⁺
Mentine.....	Norah Kulick ⁺

DANCE CAPTAIN

Dalton Bertolone*

ENSEMBLE

Kai An Chee*, Jordan T. DeLeon*, Michael Greer*, Matthew Hydzik*,
Meredith Inglesby*, Isabel Kruse*, Jillienne Leigh*, Erin McMillen*, J. Alex Noble*,
Maile Oravitz*, Grant Pace*, Tonyia M. Rue*, Ronan Ryan*, Kai Sachon*, Eric Sorrels*,
Santina Umbach*, Maxine Warren*, Luna B. Baker⁺, Aria Meinert⁺, Henry Thomas⁺

RUSSIAN DANCER

Alex Hladio

In partnership with THE TAMBURITZANS

UNDERSTUDIES

Louis Bohne - Michael Greer*

Jean-Rémy Moët - Matthew Hydzik*

Barbe-Nicole Clicquot Ponsardin - Meredith Inglesby*

Geneviève - Isabel Kruse* | Clémentine Ponsardin - Erin McMillen*

Nicolas Ponsardin, Philippe Clicquot, Napoleon Bonaparte - J. Alex Noble*

François Clicquot - Grant Pace* | Young Barbe- Nicole - Luna B. Baker⁺

Mentine - Aria Meinert⁺ | Young François - Henry Thomas⁺

SWINGS

Dalton Bertolone* | Paris Martino*

*Members of the Actors' Equity Association, the union of professional actors and stage managers in the United States.

⁺Students of the Pittsburgh CLO Academy of Musical Theater



MUSICAL NUMBERS

ACT I

Overture.....Orchestra

SCENE 1: The Revolution - Reims, France 1789

Revolutionary.....Nicolas, Geneviève, Young Barbe-Nicole, Young François, and Company

SCENE 2: Arrangements - Ten Years Later, Spring 1798

It Could Be Mine.....Barbe-Nicole

SCENE 3: The "Perfect" Engagement

Anything More Grand.....Clémentine

SCENE 4: Vinyards and Orange Roses

Life on the Edge.....François

SCENE 5: The Next Leaders of France

A Friend on the Inside.....Napoleon and Moët

SCENE 6: A Cellar Ceremony

The Man He Chose for Me.....Barbe-Nicole and François

SCENE 7: Arrangements, Pt. Deux - Five Years Later, Fall 1803

It All Seems Fine.....Company

SCENE 8: An Anchor

SCENE 9: The Streets of Reims - Two Years Later, Fall 1805

SCENE 10: Home For A Day

Luxury.....Louis, François, Barbe-Nicole, and Company

SCENE 11: Fading Roses

SCENE 12: On the Edge

A Dreamer's Dream.....François

SCENE 13: Dead Roses

SCENE 14: Stained Glass Windows

One More Beginning.....Barbe-Nicole and Company

INTERMISSION

There will be one fifteen-minute intermission.



MUSICAL NUMBERS

ACT II

SCENE 1: The Napoleonic Wars - *Five Years Later, Summer 1810*

Did You Hear.....Louis, Napoleon, and Company

SCENE 2: La Valse, Oui, La Valse

La Valse.....Company

SCENE 3: Clear is Worth Gold

Something New.....Louis and Barbe-Nicole

SCENE 4: The Invasion - *Four Years Later, 1814*

Barrels and Casks.....Barbe-Nicole, Louis, Geneviève, Clementine, and Cossacks

SCENE 5: Dance Until Dawn

Reprise: La Valse.....Louis Bohne and Barbe-Nicole Clicquot Ponsardin

SCENE 6: The Current Leaders of France - *Spring 1814*

Reprise: Did You Hear.....Louis and Company

SCENE 7: An Anchor, Pt. Deux

Talk To Him.....Barbe-Nicole and Philippe

SCENE 8: Misunderstood - *Summer 1814*

Reprise: A Friend on the Inside.....Moët and Clémentine

SCENE 9: Footprints

Footprints.....Barbe-Nicole

SCENE 10: One Last Beginning

The Race to Russia.....Barbe-Nicole and Company





Pittsburgh
CLO
Academy of Musical Theater

Pittsburgh's premier student-training program dedicated to celebrating talent and encouraging dreams!



PITTSBURGH.CLO.ORG/EDUCATION
412-281-2234

Carnegie
Mellon
University

THE SCHOOL OF DRAMA

PROUD PARTNER OF THE
PITTSBURGH CLO



Pictured: Alex Sheffield and Savannah Lee Birdsong in "A Little Night Music" by Stephen Sondheim and Hugh Wheeler. Director: Ethan Heard Music Director: Riek Edinger Scenic Design: Paul Molina Costume Design: Evan Riley Lighting Design: Jessica Winward Photo by Dave Rubin dsrphoto.com, 2024



drama.cmu.edu



PITTSBURGH CLO ORCHESTRA

Kenneth Gartman, *Conductor*
George Hoydich, *Musical Coordinator*

Keyboard 1.....Catie Brown
Keyboard 2.....Hudson Orfe
Violin.....Rebecca Neukom
Viola.....Jen Gerhard
Cello.....Joe Bishkoff
Guitar.....Ken Karsh
Bass.....Jeff Mangone Sr.
Reed 1.....George Hoydich
Reed 2.....Sam Eisenreich
Reed 3.....Jim Germann
Trumpet.....Drew Fennell
Horn.....Jason Allison
Trombone / Bass Trombone.....Gabriel Colby
Drums.....RJ Heid

MADAME CLICQUOT SPECIAL THANKS

David & Janet Campbell • Douglas Denoff • Willette Murphy Klausner
Lorraine Rennie • Adam Messer & Diana Putman • Clarissa Messer • Denise Wass
Barbara Best & Steve Dwork • Leah Wilson • Richard Wagner • Janice Cimberg
Michael Davidson • Kevin & Nicole Poe • Adrienne Barber • Daniel Bellizio, Esq.
Kathleen Conkey, Esq. • Dan Fortune • Nili Bassman Hayden
Dan Hayley, Esq. • Maria Porto
The Center for New Work Development at Carnegie Mellon University

MADAME CLICQUOT ENCHANCING PRODUCERS

42nd Parallel Productions • Douglas Denoff
Frank Galgano • Laurie Glodowski
Steven Johnston • Anita Waxman
Stephen Wilde • Joely Zuker



WHO'S WHO



**VICTORIA
FRINGS**



**PAOLO
MONTALBAN**



**CHRISTIAN
THOMPSON**



**STEVE
BLANCHARD**



**JONATHAN
CHRISTOPHER**



**JOSEPH
DOMENCIC**



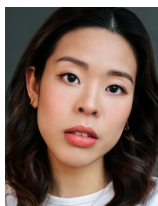
**KYLIE
EDWARDS**



**NICK
LAUGHLIN**



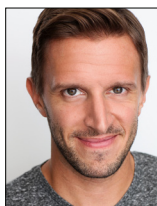
**DALTON
BERTOLONE**



**KAI AN
CHEE**



**JORDAN T.
DELEON**



**MICHAEL
GREER**



**MATTHEW
HYDZIK**



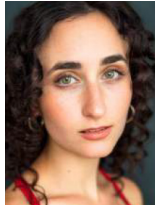
WHO'S WHO



**MEREDITH
INGLESBY**



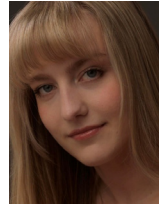
**ISABEL
KRUSE**



**JILLIENNE
LEIGH**



**PARIS
MARTINO**



**ERIN
MCMILLEN**



**J. ALEX
NOBLE**



**MAILE
ORAVITZ**



**GRANT
PACE**



**TONYIA M.
RUE**



**RONAN
RYAN**



**KAI
SACHON**



**ERIC
SORRELS**



**SANTINA
UMBACH**



**MAXINE
WARREN**



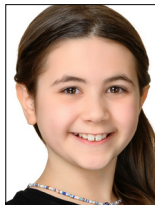
**LUNA B.
BAKER**



**NORAH
KULICK**



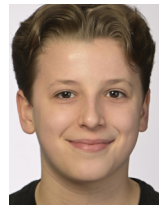
**MARIANA
MANGUAL**



**ARIA
MEINERT**



**HARRISYN
SCHILPP**



**HENRY
THOMAS**

UP NEXT!



Pittsburgh
CLO



LERNER & LOEWE'S
CAMELOT

SPONSORED BY:

JOAN
CLARK
DAVIS

JUNE 17 - 22
BENEDUM CENTER



Journey to a mystical realm where thrones are won through power, love, and betrayal — and swords decide the fate of kings — a kingdom's destiny hangs in the balance. Lerner and Loewe's timeless musical masterpiece plunges us into the legendary love triangle between King Arthur, Queen Guenevere, and the valiant Sir Lancelot. Their passions and loyalties will shape the rise and fall of Arthur's realm. Yet, as with all great legends, the dream of Lerner & Loewe's CAMELOT may come at a cost — as the quest for love and honor clashes with the pursuit of power. Revered as a legendary triumph on Broadway, this epic tale of knights and royalty has captivated audiences of all generations. The show's haunting ballads and stirring anthems, including "If Ever I Would Leave You," "I Loved You Once in Silence," and "The Lusty Month of May," echo across the ages proving why legends endure and speak to us today.

Book and Lyrics by Alan Jay Lerner, Music by Frederick Loewe



WHO'S WHO - CAST

VICTORIA FRINGS (*Barbe-Nicole Clicquot Ponsardin*) has an extensive background in both regional and New York theater. Some favorite productions include: *An Enemy of the People* (Broadway), *Constellations* (Old Globe), *School for Lies* (Shakespeare Theater), *Vladimir* (Manhattan Theater Club), *Bald Soprano* (Annenberg Center), and *The Threepenny Opera* (Arden). As a writer and director, Victoria has created two short films, *The Club* and *Stitches*. Victoria holds a BA in Environmental Studies from the University of Pennsylvania. Check out her work here: victoriafrings.com.

PAOLO MONTALBAN (*Louis Bohne*) most recently played the dual roles of Beaufort/Mr. Van Der Luyden in the stage adaptation of *The Age of Innocence* at DC's Arena Stage. He's best known as Prince Christopher in Rodgers and Hammerstein's *Cinderella* and Kung Lao on *Mortal Kombat: Conquest*. You can watch him waltz opposite Brandy once again, as King Charming in *Descendants: The Rise of Red* on Disney+. He has appeared on Broadway in *Pacific Overtures*, *The King & I*, *Breakfast at Tiffany's*, and as Florenz Ziegfeld in *Funny Girl* with Lea Michele. He co-stars in the upcoming indie rom-com *Asian Persuasion*. IG: @paolomontalban

CHRISTIAN THOMPSON (*François Clicquot*) is thrilled to be making his Pittsburgh CLO debut. A multi-hyphenated artist from Ft. Lauderdale. Broadway: *Wicked*, *Thoughts Of A Colored Man*, *Ain't Too Proud* (OBC). Regional: *Lady Molly of Scotland Yard* (Asolo Rep), *Comedy of Errors* (STC), *Devil Wears Prada* (World Premier), *Catch Me If You Can* (Arena Stage). Tour: *Wicked* (Fiyero), *RENT* 20th Anniversary (Benny, u/s Roger). Commission Playwright at Penn State, 22'. BFA from Penn State, 15'. MA candidate from Roosevelt University 25'. Allons-y! @itschristianthompson

STEVE BLANCHARD (*Nicolas Ponsardin*) Broadway: Disney's *Beauty and the Beast*, *The Three Musketeers*, *Lerner & Loewe's Camelot*, and *A Christmas Carol*. Off-Broadway: *Johnny Guitar*, *Frankenstein*, and *Treasure Island*. National Tours: Disney's *Newsies*, Disney's *The Little Mermaid*, and *Little House on the Prairie*. Television: *The Blacklist*, *The Other Two*, *Prodigal Son*, *New Amsterdam*, *House of Cards*, *Madam Secretary*, *The Good Fight*, and *Law & Order*. Film: *The Final Run*, Disney's *Newsies*, *Cover Me*, and *When The Moon Was Twice as Big*. Original cast recordings of *Johnny Guitar*, *Sundown*, *Frankenstein*, and his own CD, *Northbound Train* available at watchfiremusic.com

JONATHAN CHRISTOPHER (*Jean-Rémy Moët*) is ecstatic to return to Pittsburgh and

make his Pittsburgh CLO debut in *Madame Clicquot: A Revolutionary Musical!* Special highlights - Broadway: *Sweeney Todd*. National Tour: *Hamilton* (George Washington here in Pittsburgh!). Lincoln Center: *A Little Night Music* in Concert, *The Black Clown*. Regional/International: Coalhouse in *Ragtime* (City Springs Theatre Company), Collins in *RENT* (Atlanta Opera, Edinburgh, Aruba National Theatre). Jonathan's EP *Shine* is streaming everywhere! Gratitude: Family, WTG, Jeff, UMichigan, McGill University, Laurie, Lisette, and Richie. Choose love everyday! Cheers! @geejawn

JOSEPH DOMENCIC (*Philippe Clicquot*) is a local actor, music director, and composer/lyricist who's worked with The Acting Company, Sundance Theatre Lab, and on dozens of area productions at Pittsburgh CLO (Favorites: *Forever Plaid*, *Titanic*, *Les Misérables, 1776*), Pittsburgh Public Theater, *Unseam'd Shakespeare*, and Mountain Playhouse (most recently in *A Year with Frog and Toad*). A full-time professor at Seton Hill University, his musicals *Beyond the Moon* (co-authored with his wife, Christina McCann) and *The Next Galileo* were produced by Pittsburgh CLO's Gallery of Heroes program. Love to Catherine.

KYLIE EDWARDS (*Clémentine Ponsardin*) is absolutely thrilled to be returning to Pittsburgh CLO for her third summer! She is a rising senior Musical Theatre major at Carnegie Mellon University. Previous regional credits include: (PCLO) *A Musical Christmas Carol*, *Seussical*, *Natasha, Pierre & The Great Comet of 1812*, *Guys & Dolls*, and *Anything Goes*; (The Muni) *Dreamgirls*. Kylie would like to thank her incredible family, friends, and professors for their unwavering support! @kylie.edwards1

NICK LAUGHLIN (*Napoleon Bonaparte*) *The Book of Mormon* and *Drag the Musical* Film: *DASH*. Nick is a director, choreographer, and song writer based in Brooklyn. Recently directing video projects for Joey McIntyre, Idina Menzel, Alaska, Dylan Mulvaney, Twink & A Red Head, Google, OraQuick, Jan Sport & Luxx Noir London. Training: CCM, Second City, Upright Citizens Brigade. Insta @nicklaughs. Love you mom! For Brandon.

DALTON BERTOLONE (*Swing, Dance Captain, Assistant to the Director and Choreographer*) is thrilled to be making his Pittsburgh CLO debut! Currently on *The Addams Family* national tour. Favorite credits include: *A Chorus Line* (The Broadway Palm, San Francisco Playhouse, and Sierra Repertory Theatre); *West Side Story* (New London Barn Playhouse and Connecticut Repertory Theatre); Disney's *Newsies* and *West Side Story*



WHO'S WHO - CAST

Dalton Bertolone Bio Continued.

(Utah Festival of Opera); *Elf* (Arizona Broadway Theatre), and *Footloose, Elements!* (Norwegian Cruise Line). Dalton dedicates his performance to his brother, Tyler. The Hartt School BFA. www.daltonbertolone.com

KAI AN CHEE (*Ensemble, Geneviève*) is a Malaysian-Chinese actor and musician. Select theater: *Miss Saigon* (Kim Alternate/Gigi u/s, Broadway National Tour), *Mr. Holland's Opus* (Rowena Moraga, Ogunquit Playhouse), *Lizard Boy* (Siren u/s, off-b'way), and workshops of Jason Robert Brown's *Farewell My Concubine* and Michael John LaChiusa's *American Eclipse*. TV: *FBI: Most Wanted*, *That Damn Michael Che*, and *Olga Dies Dreaming*. www.kaianchee.com

JORDAN T. DELEON (*Ensemble*) is a Kansas City native based in NYC. National Tour: *Peter Pan*. Regional: *Meet Me in St. Louis* (Theatre Aspen); *Cats, Ragtime, Disney's Beauty & the Beast* (Music Theatre Wichita); *Grease* (Starlight Theatre); *Chicago, Disney's The Little Mermaid* (The Lexington Theatre Co.); *Holiday Inn* (Arts Center of Coastal Carolina); *Bye Bye Birdie* (Music Theatre Kansas City). BFA '23, University of Oklahoma. Special thanks to Mom & Dad! @jordantdeleon

MICHAEL GREER (*Ensemble, Jean-Rémy Moët's Father, Napoleon Bonaparte's Soldier 2, u/s Louis Bohne*) is thrilled to be back with Pittsburgh CLO this summer! Favorite credits: *Puffs* (Cedric/Voldy), *Hand to God* (Timmy, City Theatre), *You Say Tomato, I Say Shut Up!* (Jeff Kahn, Denver Center & National Tour), *Shrek The Musical* (Big Bad Wolf, North Shore Music Theatre), *Altar Boyz* (Luke), *The Music Man* (Charlie Cowell), and over 30 productions with Pittsburgh CLO. Endless love to Mara and Maple Rose, the best Dad ever, and Mom, smiling down from the top Mezzanine.

MATTHEW HYDZIK (*Ensemble, Doctor, u/s Jean-Rémy Moët*) Broadway: Gregg Allman in *The Cher Show*, Buddy in *Side Show*, Greg in *It Shoulda Been You*, Tony in *West Side Story*, and Kenickie in *Grease*. Off-Broadway: John in *Tomorrow Morning*. National tours: *If/Then, RENT, Fame, Grease, Flashdance*. Special appearances with LA Philharmonic, Kennedy Center, Lincoln Center, Lyric Opera of Chicago, MUNY, Planet Hollywood Las Vegas, Anneberg Theater Palm Springs, ACT and Edinburgh Fringe. Proud Pittsburgh native and graduate of Penn State. All my love to my Megan and Grace Willow.

MEREDITH INGLESBY (*Ensemble, u/s Barbe-Nicole Clicquot Ponsardin*) Broadway: French Maid/Feather Duster, Babette, in *Disney's Beauty and the Beast*, then original Broadway cast of *Disney's The Little Mermaid*. National

Tours: *Disney's On the Record*, (original soundtrack), *Disney's Newsies*, *Disney's The Little Mermaid* (Ursula) and *Little House on the Prairie the Musical*. Film/TV: *Disney's Newsies, Law and Order, & Red Dead Redemption*. Regional: *Lady of the Lake* in *Monty Python's Spamalot* (Lyric of OK, ACCCarolina), *Donna* in *Mamma Mia!* (Lyric of OK, ACCCarolina) and *Reno Who* in *The Grinch Who Stole Christmas* (The Old Globe), Off-Broadway: *Reno Sweeney* in *Anything Goes*. @meredithinglesby

ISABEL KRUSE (*Ensemble, Abbess, u/s Geneviève*) Origins: Australia/Canadian transplant by way of NYC. Recent: *Cinderella (Into the Woods)*, *Doralee (9 to 5: The Musical)*, *Diana Goodman (Next to Normal)*, *Rosalind (As You Like It)*, *Dianne (NY workshop / Aus World Premiere - Against the Wall)*. Dearly grateful to: this extraordinary Clicquot team, all kickass women who live, make and tell great stories, my mom and dad, and the incomparable Chelsea Davis. Likes/dislikes: Dogs, affogattos, revolution / Straight-tone and red hats. For performance and political takes: @iksings www.iksings.com

JILLIENNE LEIGH [she/her] (*Ensemble, Assistant to the Choreographer*) is an award-winning playwright, director, songwriter, and proud leading member of the diversity/inclusion team at 42nd Parallel Productions. She has been with *Madame Clicquot: A Revolutionary Musical* from the beginning, having performed as the narrator and ASL interpreter for the concert, three industry readings and the Studio Cast Recording. Jillienne is filled to the brim with glee to be moving both her hands AND her feet in this interaction of a beautiful show. Insta: @jillienneleigh • TikTok: @zebrajillie

PARIS MARTINO (*Swing*) is thrilled to be making her Pittsburgh CLO debut! Past credits include: *Carousel* at Riverside Theatre, NY premiere of *Mystic Pizza* at The Engeman and *A Christmas Story* at Goodspeed. Paris wants to thank The Godley-Fisher's for their hospitality, her mom Dawn, her Husband Kyle, Kenneth and the creative team and her agents at ATB. Enjoy! @paris.martino

ERIN MCMILLEN (*Ensemble, u/s Clémentine Ponsardin*) Pittsburgh CLO debut! Erin is an actress and singer/songwriter from Boston. Recent credits include the *Hadestown* National Tour, *Rock of Ages*, and *Evil Dead: The Musical* at Wolfbane Productions. She sings the national anthem at Madison Square Garden—Go Knicks! She's so grateful for her friends, Mom and Terry, Sam, and The Mine. Learn more about her at erinmcmillen.com or follow along @erinmcmillen!



WHO'S WHO - CAST

J. ALEX NOBLE (*Ensemble, Napoleon Bonaparte's Royal Guard, u/s Nicolas Ponsardin, u/s Philippe Clicquot, u/s Napoleon Bonaparte, Fight Captain*) is excited to be back on stage with Pittsburgh CLO. Some previous credits with PCLO include Harry the Horse in *Guys & Dolls*, Franz in *The Sound of Music*, Officer Krupke in *West Side Story*, Bunsen in Disney's *Newsies*, Topper in *A Musical Christmas Carol*, and as Jameson in the world premiere of *The Double-Threat Trio*. He is a graduate of Point Park University and is a Pittsburgh Local. Proud member of Actor's Equity since 2012.

MAILE ORAVITZ (*Ensemble*) is thrilled to be back at Pittsburgh CLO for this new musical! A Pittsburgh native, she is based in NYC and recently graduated from The Institute for American Musical Theatre. Regional: *West Side Story, A Chorus Line, A Broadway Musical Celebration, The Wizard of Oz* (PCLO). Industry: *The Cher Show* National Tour pre-production (IAMT). It takes a village to make dreams come true—she gives all her love to hers! www.maileoravitz.com

GRANT PACE (*Ensemble, Marshall Ney, u/s François Clicquot*) is a rising senior musical theatre major at Carnegie Mellon University. Credits: *Les Misérables* (The Munny), *A Christmas Carol* (ZACH Theatre), *Titanic* (Carnegie Mellon). Grant is deeply grateful to his parents for their unwavering love, support, and sacrifices, which have been the foundation of his journey in musical theatre. @grant.space

TONYIA M. RUE (*Ensemble*) Native to Pittsburgh, film credits: *The Jackson Five* and August Wilson's *The Piano Lessons* as well as commercials/print ad work. Stage credits: *Beetlejuice* (Delia), *Beautiful* (Janelle/Shirelle's) Pittsburgh CLO's Gallery of Heroes tour of *Pioneers of Flight* (Bessie Coleman), *Dreamgirls* national tour (Lorrell Robinson), *Crazy, Sexy, Disco* off-Broadway lab (Jam LaRue). Other credits include Pittsburgh Opera *Just Above My Head* (church lady), *Aida* (Aida), *Anything Goes* (Reno Sweeney), *Little Shop of Horrors* (Crystal), *Into the Woods* (Cinderella), *MacBeth* (witch), and *Moses* at Sight and Sound Theater. Tonyia is also a playwright and director for such pieces as *The Company You Keep* and *Own My Way*. Tonyia is very thankful and feels blessed to pursue her passion for the arts.

RONAN RYAN (*Ensemble, Vintner*) is excited to return to Pittsburgh CLO, having previously appeared as Snowboy in last season's *West Side Story*. Other theater credits include: *A Chorus Line* (Mark) and Disney's *Newsies* (Ike/Morris Delancey) at STAGES St. Louis, and 12 productions at The Munny, including swing roles in *West Side Story* and *Sister Act*. BFA in Dance

from Point Park University, including works by George Balanchine and Al Blackstone. Thanks to Mom and Dad, Dr. Carter, COCA, and Pittsburgh CLO cast and crew! Proud AEA member. |@ronan_j_ryan

KAI SACHON (*Ensemble, Richard Leroux*) is pumped to join Pittsburgh CLO for the 2025 Summer Season! Kai was seen last year as The Grinch in *Seussical*. In 2024, he won the Gene Kelly Award for Best Actor and went to NYC as a nominee at the National High School Musical Theatre Awards (Jimmy Awards). Now, he's studying Musical Theatre at the University of Michigan. Go Blue!! Kai would like to thank his family, friends, and the entire cast and crew! @kai.sachon

ERIC SORRELS (*Ensemble, Priest, Napoleon Bonaparte's Soldier 1*) Originally from Tennessee, Eric Sorrels is an award-winning songwriter, librettist, singer, and performer. Regional: *tick, tick... BOOM!*, *Beautiful*, *The Prom*, *Jersey Boys*, and *Natasha, Pierre & The Great Comet of 1812* (Theatre Raleigh); *Indecent* (Nashville Rep). He is a member of AGMA and sings regularly in professional choirs in New York City. Winner of the 2024 Fred Ebb Award for songwriting, 2024 Jonathan Larson Grant, ASCAP Lucille & Jack Yellen Award and the Eric H Weinberger Librettist Award. BA: University of TN, Knoxville; MFA: NYU. @eric_sorrels

SANTINA UMBACH (*Ensemble*) is thrilled to be back on stage! She was most recently seen touring Japan as Jasmine with Disney on Classic which can now be seen on Disney+. Other credits include; Broadway: *Mamma Mia!*; Vegas: *Mamma Mia!*; Off-Broadway: *Dear Jane, Mads Libs Live!*; Select Regional: *The Prince of Egypt, Evita, In the Heights*; Select Workshops: *My Pet Dragon, Mambo Italiano, Becoming Cuba*. @santinaummm

MAXINE WARREN (*Ensemble*) A Charlotte, NC native and PPU graduate, Maxine is delighted to be back in Pittsburgh. Her most recent credits include Hunyak in *Chicago* (artsHHI), *Miracle on 34th Street* (Surflight), and Cha-Cha in *Grease* (RCCL). When not performing, you can find Maxine in the hustle and bustle of NYC. She wants to thank her family, friends, and mentors for all their support! @maxine_warren

LUNA B. BAKER (*Ensemble, u/s Young Barbe-Nicole*) is a twelve-year-old student at Pittsburgh CAPA Middle School, where her focus is in musical theatre. She trains in jazz, tap, and ballet at the Pittsburgh CLO Academy and receives private voice lessons from Lorriana Markovic. Luna has been involved in multiple CLO spring musicals and summer camp productions. She is so proud to be a part of the CLO team and the world premiere



WHO'S WHO - CAST

Luna B. Baker Bio Continued.

of *Madame Clicquot: A Revolutionary Musical*. Luna wants to thank all her teachers, family, and friends for their support. She feels very lucky to be apart of this experience, and looks forward to continue growing as an artist.

NORAH KULICK (*Mentine*) is a ten year old 5th grade high honor student at Pittsburgh Carmalt Elementary school. She has been participating in a three year Pittsburgh CLO Creative Vision musical program at her school in which she had lead roles in *The Wiz*, *Matilda*, and *Shrek*. She attends Pittsburgh CLO Academy in which she has performed in the production of *Cinderella: Youth Edition*. In her spare time she enjoys gymnastics and horseback riding.

MARIANA MANGUAL (*Young Barbe-Nicole*) is thrilled be making her professional debut! A junior at Seton LaSalle High School, Mariana has been involved in a number of productions, both at school and at local theaters. For the past two years she's been a finalist for Outstanding Actress in the Gene Kelly Awards at PCLO. She would like to thank her family for their unwavering support, her teachers and friends for cheering her on, and God for an amazing journey. @marimanguall

ARIA MEINERT (*Ensemble, u/s Mentine*) is an 11-year-old fifth grader at Pittsburgh Montessori School, is thrilled to continue her acting journey as the understudy for Mentine in Pittsburgh CLO's *Madame Clicquot: A Revolutionary Musical*. Aria's recent performances include roles in Pittsburgh CLO productions such as *A Musical Christmas Carol* (Melinda), *Mary Poppins Jr.* (ensemble), *The Wizard of Oz* (Wicked Witch), *Legally Blonde Jr.* (Salesperson), and *Annie* (Annie). Beyond the stage, she enjoys cheering for the Pittsburgh Penguins, building Legos, and traveling. Aria extends her heartfelt thanks to her family, CLO instructors, and fellow cast members for their unwavering support and encouragement.

HARRISYN SCHILPP (*Young François*) is thrilled to be making his Pittsburgh CLO debut in *Madame Clicquot: A Revolutionary Musical!* A senior at Knoch High School, Harrisyn has been an active member of the theater program under the direction of Jennifer Bronder. Most recently, he was honored with a Henry Mancini Best Actor nomination for his portrayal of Frank Abagnale Jr. in *Catch Me If You Can*. He trains at the Pittsburgh CLO Academy, where he takes dance, voice, and acting classes, and is part of the Pre-Professional Development Program. Harrisyn also works as the Junior Music Director at Center Stage Dance Academy for their Onstage with Center Stage Musical Theater program. This fall, he will attend Coastal

Carolina University to pursue a Bachelor of Fine Arts in Musical Theatre. He is incredibly grateful to his mentors, friends, family, and especially his mom and dad for always encouraging him to grow as an artist.

HENRY THOMAS (*Ensemble, u/s Young François*) is a 12-year-old student at KO Middle School and has proudly studied at the CLO Academy since 2018. He is excited to be a part of this amazing new musical! Recent roles: PCLO *Seussical* (Jojo/the Boy) and PCLO *The Music Man* (ensemble). He wishes to thank his family, friends and instructors at the CLO Academy, South Park Children's Theatre and KO Middle School for their continued guidance and support.

WHO'S WHO - CREATIVE

LAURIE GLODOWSKI (*Director, Choreographer*) is a theatrical producer and award-winning director / choreographer with extensive experience in Broadway, Off-Broadway, and regional theater. As Founder and CEO of 42nd Parallel Productions, she has been instrumental in bringing compelling theatrical works to the stage. Laurie is a Guest Faculty member at NYU Tisch School of the Arts and previously served as the Executive Producer of the St. Louis Fringe Festival. She also founded The Phred Foundation, a non-profit organization dedicated to supporting the next generation of artists by providing scholarships to children pursuing education and training in the arts. Favorite Director/Choreography credits include: *The Producers*, *Singin' in the Rain*, (Winner, Best Choreography, Nom. Best Director), *Velvet Over Steel*, *The Full Monty* (Winner, Best Choreography), *Wizard of Oz* (Nom. Best Choreography), *Seussical*, *Cabaret*, *A Chorus Line*, *My Fair Lady*, *Urinetown*, *Little Shop of Horrors*, *Annie*, *Grease*, *Beauty and the Beast*, *Sweeney Todd*, *Hello, Dolly!*, *You're a Good Man, Charlie Brown*, *South Pacific*, and *The 25th Annual Putnam County Spelling Bee*. Proud member of the Broadway League, SDC, the Broadway Producers Alliance, NAMT, CTI, and the Broadway Woman's Alliance

KENNETH GARTMAN (*Music Director, Conductor*) *Inner Voices III: Arlington* (Off-Broadway); *The White City, Broadcast and The ToyMaker* (Eugene O'Neill National Music Theatre Conference); *Danny and the Rocket* (NYU/Tisch School of the Arts); *Reading of Once Removed* (music by Graham Russel of Air Supply); *Zapata! The Musical, Show Choir! The Musical, and The ToyMaker* (NYMF); *Trouble in Shameland* (FringeNYC); *Pippin, Kiss Me Kate, Singin' in the Rain* (Summer



WHO'S WHO - CAST

Theatre of New Canaan); Numerous cast recordings, demos, concerts & cabarets. KennethGartman.com @kenneth_gartman

HOLLY M. BREUER (*Scenic Designer*) is a Pittsburgh-based multi-disciplinary theatre artist who has designed, taught, stage managed, built, painted, and crafted her way across the U.S. She has taught at Pittsburgh CAPA, the College of Wooster, and Missouri Western State University. Additional design credits: Pittsburgh CLO, Pittsburgh Festival Opera, Nebraska Shakespeare Festival, Barter Theatre, Birmingham Children's Theatre, Syracuse Stage, and the Adirondack Theatre Festival. Holly holds an MFA in Scenic Design from Kent State University and a BFA in Design/Technical Theatre from Syracuse University.

PAUL MILLER (*Lighting Designer*) Internationally, Paul's work has been seen on stage at the Stratford Festival, London's West End, Vienna, Teatro alla Scala (Milan), South Africa, China, Manila, Iceland and São Paulo. On Broadway, he has designed 5 musicals and been the Associate/Assistant on 22 others. Notable Off-Broadway favorites include: *Desperate Measures*, *Clinton!*, *Pageant*, *Vanities - the Musical*, *Waiting for Godot*, *Nunsense*, *Encores!* (9 shows). National Tours: *Hairspray*, *Elf*, *Wizard of Oz*, *Sweeney Todd*, *The Producers*, *RENT*, *Shrek*. Regional: Arizona Theatre Company, The Old Globe, Dallas Theatre Center, Chicago Shakespeare, Idaho Shakespeare, Asolo Rep, ACT, Cleveland Playhouse, Pasadena Playhouse, Goodspeed, and others. Television: *Evil* (CBS & Paramount+), Live from Lincoln Center, more than 20 Netflix specials, and the internationally televised New Year's Eve Celebration from Times Square (for 25 years).

JANET GROOM CAMPBELL (*Costume Designer*) Pittsburgh Ballet Theatre's long-time costumer' Janet Groom Campbell, was with PBT for almost 50 years. Her contributions to PBT are innumerable. She designed over 45 ballets including *The Mighty Casey*, *Bolero*, *Through the Window*, *The Sounds of the Sun*, *Rodeo*, George Balanchine's *Theme and Variations*, *Symphony in C*, *Who Cares*, *Tarantella*, *Allegro Brillante*, and *Sylvia Pas de Deux*. She has overseen the costume construction for almost every production performed in those 50 years including 4 different versions of *Nutcracker*, 2 of *Swan Lake*, *The Great Gatsby*, *Giselle*, and many others. Janet received her degree from the Fashion Academy of Pittsburgh in 1973. She has also designed and built work for Dance Alloy, the American Wind Symphony, and Chamber Opera of Pittsburgh. She has lectured at numerous Universities and for a number of local organizations. Janet was featured in the

Magee Women's Annual Report entitled, "The Art of Performance" and in 1996, she designed an ornament for the White House Christmas Tree. Janet is on the Board of Directors for the Pittsburgh Ballet Theatre and is a member of The Twenty-Five Club and Past President of the National Society of Arts and Letters: Pittsburgh Chapter. Janet is a member of TWU 787 Dresser Union. Janet is the owner of The Dancer's Perfect Fit, a Pittsburgh-based dancewear shop and the author of *Let's Dance: The Art of the Costume*. She is also highly skilled in the art of Scottish kilt making. Janet is married to David Campbell and has two daughters and three grandchildren. Janet would like to thank Kathie Sullivan and everyone that helped me build the costumes for *Madame Clicquot: A Revolutionary Musical*.

SAM SILVA (*Sound Designer*) A Uniontown, PA native, Sam has worked extensively in theatrical audio as A1, A2, Associate Sound Designer, and Sound Designer. Recent credits include *Evita* (The Rev Theatre), *Million Dollar Quartet*, *Jersey Boys* (Apex Touring), *Kinky Boots* (Theatre By The Sea), and *Fiddler on the Roof* (The Barn Theatre). Associate Sound Design: *Summer: The Donna Summer Musical* (National Tour). Sam holds a B.A. in Theatre from California University of Pennsylvania. Special thanks to his wife Liz and his family.

SHERRY DEBERSON (*Hair and Makeup Designer*) is happy to be back working with Pittsburgh CLO on *Madam Clicquot: A Revolutionary Musical*. Sherry has worked on many Pittsburgh CLO productions since 1980. She has also worked for The Pittsburgh Ballet, Elsen Associates, City Theater, The Pittsburgh Public, Operas, Films and Commercials. She is a proud retired I.A.T.S.E. member of local 3 and 798.

MARK CIGLAR (*Projection Designer*) is Founder and CEO of Cinevative, the nation's leading producer of on-screen media for performing arts and live entertainment. His innovative approach to theatrical video has helped increase ticket sales for some of the most prestigious performing arts organizations in the country. His clients include Broadway and national tour producers as well as regional producers and presenters including Center Theatre Group, Paper Mill Playhouse, The Old Globe, Pittsburgh CLO, Denver Center, 5th Avenue Theatre, Theatre Under the Stars, Tuacahn Amphitheatre, Goodspeed Musicals, Cirque du Soleil and many others. His video design for stage projections can be seen around the world on Royal Caribbean stage shows (Ovation, Anthem and Harmony ships), Princess Cruises, Explora Journeys, Jalesh



WHO'S WHO - CREATIVE

Mark Ciglar Bio Continued..

Cruiselines, Gloria Trevi/Alejandra Guzman World Tours, *Alton Brown Live* on Broadway, Dame Edna's *Glorious Goodbye Tour*, *RAIN* the Beatles Tribute Tour, and numerous theatrical tours and venues such as the Superdome, Staples Center, Nissan Stadium, The Dolby Theatre, The Colosseum at Caesars Palace, The MGM Grand and many others. He directed the full-length streaming special, *You I Like*, a Tribute to Jerry Herman airing on Broadway On Demand, the broadcast capture of *Gold Over America* starring Simone Biles and the US gymnastics Team, *Iceboy!* with Megan Mullaly and Nick Offerman, video packages for Disney's *Frozen* and *The Last Ship* starring Sting, among many others.

RANDY KOVITZ (*Fight Director*) has been staging fights for over four decades, working on and off Broadway and in regional theater, film and TV. Recent credits for the CLO include *Aida*, Disney's *Newsies*, *Oklahoma!*, *Natasha, Pierre, and The Great Comet of 1812*, and *West Side Story*, four seasons at the Tony Award-winning Utah Shakespeare Festival and the films "The Ballad of the Sad Café" with Vanessa Redgrave, "The Addams Family" — as fencing double for Raul Julia — and the Pittsburgh made films "Unsinkable" and "Basic Psyche."

GEOFF JOSSELSO CASTING (*Casting Director*) is a New York-based casting director, handling productions for theatre, film and television. Recent work includes productions for Arena Stage, Actors Theatre of Louisville, Baltimore Center Stage, Cape Playhouse, Denver Center, Ensemble Studio Theatre, The Irish Repertory Theatre, Merrimack Rep, Oregon Shakespeare Festival, Paper Mill Playhouse, Pittsburgh CLO, Pittsburgh Public Theatre, Repertory Theatre of St. Louis, Round House Theatre, Seattle Repertory Theatre, Theaterworks Hartford, and Weston Playhouse.

LISETTE GLODOWSKI (*Book, Music, Lyrics*) is an award-winning composer-lyricist, actor, choreographer and educator. She has performed on stages coast to coast, written numerous musicals and plays, choreographed for regional houses, coached many Broadway singers, and earned her MFA at The Graduate Musical Theatre Writing Program, NYU Tisch School of the Arts | BFA in Musical Theatre/Acting at East Carolina University. Current writing credits with collaborator Richard C. Walter: *Madame Clicquot: A Revolutionary Musical*, The sold-out concert at The Arts Center of Coastal Carolina (2021), Industry Readings and more— *Tambora: The Lost Kingdom* (Industry Reading at NYU) and *Escrow! A New Musical*. Lisette's other shows include *Velvet Over Steel*, *The Adventures of Atalanta*, *Much A Cruise About Nothing*,

Starving Artist: A Song Cycle, *Call Me Coppelia* and more. Proud member of The Dramatists Guild, ASCAP, AEA, SDC, and the recipient of the Dramatists Guild Foundation Grant in 2020. For more info on her other artistic hats, visit www.lisetteglodowski.com

RICHARD C. WALTER (*Book, Music, Lyrics*) is a composer-lyricist who has studied and worked in genres including musical theatre, choral, a cappella, pop, jazz, and film scoring. His show *Madame Clicquot: A Revolutionary Musical* (co-written with Lisette Glodowski) has had two developmental readings in New York and was part of New York Theatre Barn's New Works Series in 2020. Richard has been a guest composer at Columbia University and was commissioned by NYU to team up with his *Clicquot* collaborator Lisette Glodowski, to write the song "Go Ahead" for the Tisch School of The Arts 2020 graduation ceremony at Radio City Music Hall. Richard has been honored to volunteer as a composer with the 52nd Street Project in NYC, writing new songs and plays with kids. Richard received his B.A. in music from University of Chapel Hill and his MFA in Musical Theatre Writing at NYU's Tisch School. of the Arts. Currently in development: *Retrograde*, an astrology pop musical. www.richardcwalter.com

FRANK GALGANO & MATT CASTLE (*Music Arrangements & Orchestration*) are a dynamic musical theater writing, directing and producing team known for their unique, collaborative approach to storytelling. Together, they have contributed to dozens of critically acclaimed productions across the industry. Favorite projects include: *The Little Mermaid*, *Beauty and the Beast*, and *Seas the Adventure* (Disney Cruise Line), *Sweet Charity* (Gulfshore Playhouse), *Scotland, PA* (Roundabout), *Found* (Atlantic Theater Company, Philadelphia Theatre Company, AMA), *Into the Woods* (Roundabout/Fiasco), *String* (Village Theatre), *Chick Flick the Musical* (off-Broadway), *Once Upon a Mattress* starring Jackie Hoffmann and Lypsinka (Transport Group), *A Dog Story* (off-Broadway), *The Elf on the Shelf* and *American Girl Live!* (Mills Entertainment), *Up and Away* (Pittsburgh CLO), *Kris Kringle* (Town Hall, Proctors), *The Donner Party* and *A Little Princess* (Sacramento); and many new works for TheaterWorksUSA, Kennedy Center, and George Street Playhouse. The duo has also written arrangements for all kinds of wonderful performers including Kristin Chenoweth, Cynthia Erivo, Santino Fontana, Carole King, Aloe Blacc, Heidi Blickenstaff, Beth Leavel, Deborah Vogt, Debra Monk, Randy Newman, and Randy Rainbow - to drop a few names! Frank & Matt (along



WHO'S WHO - CREATIVE

with bookwriter/lyricist Sara Wordsworth) just wrote their first original musical for Disney Cruise Line, and are working with librettist/lyricist Barry Harman to complete an unfinished show begun with the late Keith Herrmann. www.brainstormtheatrics.com

PAMELA BRUSOSKI (*Production Stage Manager*) This is Pamela's sixth show with Pittsburgh CLO. Previously she was an assistant stage manager on *A Musical Christmas Carol*, *A Color Purple*, *Into the Woods*, *Guys & Dolls*, and *The Sound of Music*. She was a stage manager at Pittsburgh Public Theater for 5 seasons as well as at PICT Classic Theatre. In New York she worked on and off-Broadway including more than 20 years and 45 shows at Irish Repertory Theatre. This spring, she was a stage manager for the world premiere play *Last Call* at New World Stages. Pamela earned her MFA in Directing from CUNY Brooklyn College.

KELLY HAYWOOD (*Assistant Stage Manager*) is excited to be a part of this new musical. Past Pittsburgh CLO productions: *Peter Pan*, *In the Heights*, *Aida*, *Mamma Mia!*, *The Color Purple*, *A Musical Christmas Carol*, *Million Dollar Quartet*, *Titanic*, *A Chorus Line*. Kelly has also done several productions with Pittsburgh Public Theater, Ballet and Opera. In her down time she also works with IATSE Local 3 and 787.

HOPE F. MICHELSON (*Assistant Stage Manager*) Pittsburgh CLO Debut! Broadway: *Days of Wine and Roses*, *POTUS*, *Alan Cumming is Not Acting His Age*. Off-Broadway: The Public, Lincoln Center Theatre, Atlantic Theater, BAM, Irish Repertory Theatre, PAC. Regional: Spent the last three summers at the MUNY and this spring at Sacramento Music Circus. Graduate of LaGuardia High School and BA from UC Irvine. All my love to my Dad, Mom, and the Chocolatiers. @hopefmichelson

42ND PARALLEL PRODUCTIONS is a female-led production company and creative hub, focused on artistic collaboration and bringing exciting new works to the world. Broadway/Tours: *Come From Away*, *Hadestown*, *The Band's Visit*, *Jersey Boys*, *The Ferryman*, *The Lifespan of a Fact*, *Tina*, *Fiddler on the Roof* (Yiddish), *The Height of the Storm*, *Margaritaville*, *Be More Chill*, *Lempicka*, *Slave Play*, *Life of Pi*, *1984*, *Saint Joan*, *Verso*, *The Book of Mormon*, *Hello Dolly*, *The Front Page*, *The Glass Menagerie*, *Les Liaisons Dangereuses*, and *Tuck Everlasting*. Off-Broadway and Beyond: *Daddy Long Legs*, *Puffs*, and *Hundred Days*. Development: *Madame Clicquot: A Revolutionary Musical*, *Little Dancer*, and *Tambora: The Lost Kingdom*.

MARK FLEISCHER (*Executive Producer*) has served as the artistic and administrative head of the Pittsburgh CLO since June of 2020. His inaugural year brought the challenges of the shutdown of live indoor theatre, but it was during that time that Mark spearheaded the PCLO's move back to its outdoor roots with two spectacular musicals produced at Heinz Field with support from the Pittsburgh Steelers and many local donors. *The Wizard of Oz* and a star-studded *75th Anniversary Broadway Musical Celebration* brought the community together to experience the joy of musical theatre once more. He then oversaw the PCLO's return to live indoor performances in 2022. Before his appointment as Executive Producer Mark was PCLO's Producing Director (2018 – 2020) and its Associate Artistic Director (2014 – 2018). Prior to joining PCLO, Mark was the Producing Artistic Director of Adirondack Theatre Festival (2007 – 2014) and Managing Artistic Director of Plano Repertory Theatre in suburban Dallas (1993 – 2002). With a passion for both classic and new shows, he has directed readings, residencies, revivals, and world premiere productions for theaters across the country. Mark's directing credits include a wide range of shows such as the musicals *Sunday in the Park with George* (which won 7 Dallas Theatre League Awards including Best Direction of a musical), *Passion*, *A Chorus Line*, *Ordinary Days*, and *My Favorite Year*, as well as classic plays including *A Midsummer Night's Dream*, *The Tempest*, *Hedda Gabler*, and *The Diary of Anne Frank*, plus numerous world premieres. Mark is a Board Member of the National Alliance for Musical Theatre (NAMT), chairing the organization's Member Resources Committee. He is also a member of The Broadway League where he serves on Intra-Industry and Audience Engagement committees. Locally Mark is on the Board of the Downtown Neighborhood Alliance. Mark holds a BA in English Literature and Communication Arts from Austin College and an MFA in Directing from the Theatre School at DePaul University.

PITTSBURGH CLO (*Producing Company*) has been the driving force for 78 years behind the preservation, creation and promotion of live musical theatre since 1946. Founded in the years following WWII as a way to bring Pittsburgh together for a community experience, the company has grown to become one of the largest regional musical theatre organizations in the country. The organization's commitment to preserving, creating, and promoting live musical theatre is evident in its diverse programming, which includes beloved Broadway classics as well as the development of new works. PCLO's dedication to nurturing emerging talent is commendable,



WHO'S WHO - CREATIVE

Pittsburgh CLO Bio Continued..

with numerous artists (Billy Porter, Renée Elise Goldsberry, Rob Marshall, Kathleen Marshall, Shirley Jones and many more) launching their careers under its wing. The mission extends beyond the 3 show summer series with other ongoing initiatives such as the Pittsburgh CLO Academy of Musical Theatre, the Construction Center for the Arts, the acclaimed Gene Kelly Awards for Excellence in High School Musical Theater and The National High School Music Awards (The Jimmys). Every ticket purchased impacts our own hometown, Pittsburgh, in a variety of ways beyond the stage performance. Pittsburgh CLO has always been a proud economic generator, hiring local theatre professionals to bring the best musical theatre to life. Since 1946, loyal Patrons, Subscribers, and Donors have stood beside our organization to ensure production of Broadway caliber shows right here in our hometown. Pittsburgh CLO is excited to continue creating magical musical memories that are by Pittsburgh, for Pittsburgh and partnered with Pittsburgh all year long! For more information, please visit PITTSBURGHCLLO.ORG

**celebrating the
arts that bring
us together.**

KeyBank is grateful for the creativity that enriches all our lives, and we're proud to support the arts. Thank you, Pittsburgh CLO, for making a difference.

KeyBank 
Opens Doors.®

©2025 KeyCorp. All rights reserved.
KeyBank Member FDIC 240715-2688603-1288998769

It's a **SUMMER** Full of Fun!

2025 PITTSBURGH CLO
SUMMER CAMPS

DOWNTOWN LOCATION

PRIVATE LESSONS
for Voice, Piano, Dance, or Acting

June 9 - Aug 1
By appointment only

**TRIPLE-THREAT
BOOT CAMPS**

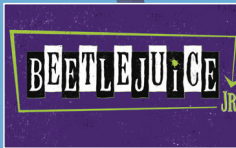
June 10 - 12 **Aug 5 - 7**
Ages 10 - 13 and Ages 10 - 13 and
Ages 14 - 18 Ages 14 - 18



June 16 - 20 July 21 - 25*
Ages 8 - 18



June 16 - 27*
Ages 6 - 10
Aftercare Available



June 30 - July 11*
Ages 13 - 18
No camp July 4th



July 7 - 18*
Ages 8 - 11 & 12 - 15
Aftercare Available



July 21 - August 1*
Ages 8 - 11 & 12 - 15



July 28 - August 8*
Ages 7 - 11
Aftercare Available



July 1 - 3
Ages 3 & 4



July 1 - 3
Ages 5 & 6

SOUTH PARK LOCATION



June 16 - 26*
Ages 8 - 13

**REGISTER
TODAY!**





THANK YOU TO OUR PCLO DONORS

ACT 2 IS MADE POSSIBLE BY YOU!

Thank **YOU** for your philanthropic support of the Pittsburgh CLO's Annual Campaign and Education Campaign (through **MAY 13, 2025**).

Our family of Pittsburgh CLO donors plays a critical role in advancing our mission to celebrate live musical theater **made by Pittsburgh, for Pittsburgh, and in partnership with Pittsburgh**. From breathtaking musicals produced in our hometown to inspiring creative and youth-arts initiatives, your generosity keeps breathtaking musical theatre affordable and accessible to everyone in our community.

DONOR KEY: IMO: In Memory Of | IHO: In Honor Of | (): Number of Years

THE PITTSBURGH CLO IS GRATEFUL FOR THE GENEROUS SUPPORT PROVIDED BY THE PITTSBURGH CULTURAL TRUST

CORPORATIONS

DIAMOND CIRCLE \$25,000 AND ABOVE

#1 Cochran (18)
Baird (30)
Dollar Bank (23)
Healthcare Realty (8)
Highmark (32)
Howard Hanna
Real Estate Services (14)
KeyBank (12)
Omni William Penn Hotel (15)
PNC (70)
RSM (1)
Specialty Conduit
& Manufacturing (14)

GOLD CIRCLE

\$10,000 - \$24,999

Alco Parking (20)
Ashley Homestore
at the Highlands (4)
Breakaway Tours (1)
Chubb Group of
Insurance Companies (14)
Deloitte, LLP (17)
Delta Air Lines (8)
Diamonds by Rothschild (11)
Federated Investors
Foundation, Inc. (16)
Giant Eagle, Inc. (20)
Koppers (14)
The Frank E. Rath - Spang &
Company Charitable Trust (45)
ReedSmith (18)
UPMC (21)
Williams Coulson Johnson Lloyd
Parker & Tedesco, LLC (1)

SILVER CIRCLE

\$5,000 - \$9,999

AON (4)
Concord Theatricals (1)
Enkompas Technology Solutions (3)
First National Bank (2)
K&L Gates, LLP (17)
KPMG (20)
MSA Safety (58)
Pittsburgh Steelers (3)
Rush Order Tees (1)
TriState Capital Bank (3)

EXECUTIVE

PRODUCER'S CIRCLE

\$2,500 - \$4,999

Assured Partners of Pennsylvania
Champ Printing Company (9)
Development Dimensions
International (12)
Leech Tishman (1)
Littler Mendelson, P.C. (2)
Madame Clicquot (2)
Ninja Transfers (1)
Post & Schell (10)
Schneider Downs (23)

PRODUCER'S CIRCLE

\$1,000 - \$2,499

Ampco-Pittsburgh
Charitable Foundation (30)
Bender Leadership Academy (5)
Tudi Mechanical Systems (3)

FOUNDATIONS

The Anne L. and George H. Clapp
Charitable and Educational Trust
Bozzone Family Foundation
The Charity Randall Foundation
The Clyde E. and
Trudi L. McAuley Fund
Community Foundation
of Fayette County
Cooper-Siegel Family Foundation
Edith L. Trees Charitable Trust
The Essential Foundation
The Falk Brothers Fund
Ganassi Foundation
The Grable Foundation
The Heinz Endowments
Irene C. Shea Charitable Foundation
Helen M. Knepper Memorial Fund
of The Pittsburgh Foundation/
Community Foundation of
Westmoreland County
The Jack Buncher Foundation
Laurel Foundation
Massey Charitable Trust Founders:
Harris B. Massey and
Doris J. Massey
McKinney Charitable Foundation
Milton G. Hulme
Charitable Foundation
Mohr Family Fund of
The Pittsburgh Foundation
National Alliance for Musical Theatre
Pauline Pickens Charitable Trust
The Pittsburgh Foundation

Rackoff-Loeb Family Fund of

The Pittsburgh Foundation
Richard King Mellon Foundation
Robert and Mary Weisbrod
Foundation
The Vernon C. Neal and
Alvina B. Neal Fund
W.I. Patterson Charitable Fund

PUBLIC SUPPORT

Allegheny Regional Asset District
City Of Pittsburgh
Department of the Treasury
Pennsylvania Council on the Art

GENE KELLY

PRODUCERS SOCIETY

*PCLO's Gene Kelly Producer's Society
is a community of remarkable
philanthropists who share an
extraordinary commitment to
Pittsburgh CLO.*

TITLE PRODUCERS

\$25,000 AND ABOVE

Dan Booker IMO Debby Booker (37)
Stephen and Helen Hanna
Casey (33)
Joan Clark Davis (27)
The Estate of Eleanor Dragan (17)

Dolores Kara

IMO Michael J. Kara (25)
John Keith Maitland Fund of
The Pittsburgh Foundation/
Community Foundation of
Westmoreland County (48)
Robert C. McCartney (43)
Specialty Conduit
& Manufacturing, LLC (15)
Carol H. Tillotson
IMO Anne C. and
Arthur R. Hefren (28)
The Estate of Reverend
Thomas A. Wagner (31)
Leah and Jason Wilson
and the Wilson Family (8)

LEAD PRODUCERS

\$15,000 - \$24,999

Hal and Kimberly Burch (9)
N. David and Janet M. Campbell (1)
Gus and Annie Hanna Engel (6)
Joe & Kathy Guyaux (24)
Edward T. and Suzanne F.
Karlovič (22)
Deedra Knaus (8)

THANK YOU TO OUR PCLO DONORS

ACT 2 IS MADE POSSIBLE BY YOU!



LEAD PRODUCERS CONT'D...

Bill & Sandy Lambert
IHO our daughters:
Emily & Kelly (25)
Richard and Lynn Lipovich (10)
Mark & Diane Minnaugh (21)
Mr. and Mrs. Alexander Overstrom (5)

EXECUTIVE PRODUCERS

\$10,000 - \$14,999

William P. Anderson (25)
Joe & Karen DiVito (14)
Jeff and Lesley Evancho (3)
Mr. and Mrs. Peter J. Germain (20)
Mr. Allyn J. Lynch (13)
The Malandro Family (9)
Robert and Christine Pietrandrea (11)
Glenn & Stephanie Todd (10)
James R. Wiltman (20)

PRODUCING DIRECTORS

\$5,000 - \$9,999

Dr. Vitasta Bazaz-Sheeh
Sehgal - Fund
IMO Dr. Kuldeep Sehgal of
The Pittsburgh Foundation (22)
Mrs. Patti Matty Blenko
IMO Walter Blenko (43)
George and Ada Davidson (41)
George and Daphna Gans (9)
Vicki C. Henn (9)
Michael and Evonne Henry (8)
Leslie Hyde and Lou Santora (6)
Tom & Chris Kobus (28)
Cher Kotovsky
IMO Irwin Kotovsky (4)
Dr. Diane Beynon Landers (11)
Bryson and Meg Lesniak (2)
Nicholas Liparulo
IMO Anne Liparulo (12)
Margaret A. McLean
and Stanley Yorsz (12)
Janice and Ernie Meade (12)
Tim McVay and David Bush (6)
Laurie Burkhart Mushinsky (21)
Leah and Paul Ohodnicki (16)
Luke and Allison Sizemore (11)
Arlene & Barry Sokolow
IMO Anna & Nicholas Zelkovic (22)
Justice Debra and Stephan Todd (17)
Gary and Debbie Truitt (22)
Melissa Ungar (14)
Dennis and Diane Unkovic (16)
Mr. & Mrs. William H. Van Duzer (26)
Travis and Nikki Viglione Williams (9)
Tim & Linda Zimmerman (35)

PRODUCERS

\$3,000 - \$4,999
Anonymous
Pritam and Binu Advani (7)
Tripp and Nancy Amick (8)
Stephen and Dana Bloomburg (11)
Carolyn Bouchard (2)
Dr. Kerry Bron and
Mr. Robert Levin (2)

Phyllis and Tom Davidson (3)
Joy Dawso (16)
Jane & Michael Dixon
IMO Cheryl Young (26)
Melinda and James Edwards (9)
Cathy and Randy Emanuelson (7)
Jeff and Jennifer Erdely (4)
Kim & Curt Fleming (25)
Dr. Edward L. Foley (26)
David and Deborah Freeman (13)
Gary and Michele Gatto (4)
Patricia Gray
IMO Charlie Gray (35)
Mr. & Mrs. Robert A. Harlan (23)
Drs. Martha and Lawrence John (10)
Greg and Debbie Knowles (10)
Brian and Suzanne Koble (4)
Raymond & Karen Love (23)
Michael and Wanda McGarry (10)
Jamie McGovern and
Rebecca Nugent (4)
Jim and Lisa McQuade (7)
Ed and Deb Moretti (9)
Kari Murphy (2)
Scott & Jennifer Neill (22)
Jordan and Laura Nicholas (7)
The O'Loughlin Family
Charitable Fund (24)
Christina O'Toole
IMO Paul & Helen Triko (14)
Paul and Paula Palmer
IMO Charlie Gray and
IHO Van Kaplan (22)
Jean Marie Perry (12)
Bob Powell (6)
Robin Randall (5)
Barbara M. Rankin (1)
Barbara Riehle (2)
Roseann Rosnick (4)
Jim and Linda Rumbaugh (4)
George and Helen Spalaris (12)
Eric and Michele Schaffer (19)
Randi L. Starr (9)
Mark and Tammy Steele (29)
Marcia and Louis Swartz (9)
Joan L. Tissue (10)
Elizabeth Toole
IMO Mrs. Michael Kutsenkow (5)
Tom and Lynne VanHimbergen (5)
Mr. Richard J. Voller (38)
Carla J. Vrsansky, Esq. (20)
Sally Wade (38)
Matt Williams
in loving memory of Teresa
and Robert Williams (24)
Mr. & Mrs. W. Robert Wells (37)
Dr. Audrey Zelkovic
IMO Anna & Nicholas Zelkovic (13)

ASSOCIATE PRODUCERS

\$1,500 - \$2,999

Anonymous
Jen Bohland-Anhalt
& Joshua Anhalt (16)
Michele and Pat Atkins (4)

Kathryn and James Bann (10)
Meghan and Jose Barrera (11)
Elaine M. Bellin and Phyllis D. Coontz
IHO Patty Maloney (8)
Joyce Bender (10)
Anthony Benevento (2)
Paul E. Block
IMO Don Arnhem
Beatrice Bonfiglio IMO
Alfred Bonfiglio (27)
W. Dennis and Penny Bossick (4)
Caleb Breckon (1)
Felicitas Caracoche (5)
James P. Cassaro (7)
Adam and Patricia Davidson (20)
Stacy and Christopher Dee (13)
Teresa and Christian Fails (2)
Elias Fedele (4)
Wynne Rooney Fedele
IMO George W. Rooney, Jr. (18)
Theresa B. Fedio (25)
Holly and Mark Fleischer (5)
Warren Fugate and Eileen Kopchik (6)
Edward and Lynn Gallagher (1)
Patrick A. Gray (7)
Mrs. Lori Giordano-Bosiljevac (4)
Richard S. Hamilton Foundation (22)
Michael and Tammy Hart (2)
MAC and George Hoover (7)
The Howe Family (4)
Christy Kobus (12)
Christy and Aaron Kolko
IMO Dr. Susan Cohen (5)
Angela and Scott Langill (3)
Fred and JoEllen Leech (10)
Brandon Marzke (3)
Mary McFadden (1)
Marcia Metelsky (3)
Marcia S. Morton (52)
Deerfield Nimicks (1)
Randall Olson (12)
William and Audia Otto (15)
John Jay Patterson
IMO Paula J. Patterson (1)
Elisa and Terry Poole (3)
Dawn Predmore
and Patrick Putorti (2)
Jana and Brett Randall (1)
Susie and Jerry Robinson (25)
Sarah and Dante Romito (1)
Ken and Toni Senatore (33)
Patrick Stefano (1)
Sterling Family Fund of
The Pittsburgh Foundation (12)
Betsy and Tom Teti
IMO Charles and Anne Lynn (27)
LaShawnda A. Thomas (4)
Steven Voudouris (1)
Bob Williams (24)
Mr. John C. Williams, Jr. (29)



THANK YOU TO OUR PCLO DONORS

ACT 2 IS MADE POSSIBLE BY YOU!

MEMBER DONORS PATRONS

\$500 - \$1,499

Anonymous
Anonymous
IHO Dan and Debby Booker (3)
Charles & Shelly Bossong
IMO Charlotte (25)
Debbie Boughner
IMO Jim Boughner (5)
Ellen Carabin (14)
Ms Nanette Catarinella
IMO Roland Catarinella (65)
Barbara Chait
IHO Van Kaplan (6)
Heather M. Chappars (14)
Mrs. Clare Donahue
IMO Thomas M. Donahue (10)
Mr. and Mrs. Richard Dougherty (9)
Merrill and Theresa Druggs (20)
Carl Dudeck, Jr. (14)
Brian and Tricia Eccher (3)
Jeffrey & Karen Fink (28)
Galatis Family (3)
Marlene Goldstein
IHO Sharon Goldstein (2)
Rev. Dr. James R. Gretz (38)
Andrew and Darlene Hasley (3)
Richard and Ruth Ann Hess (57)
Donna and Keith Impink (1)
Kendra Whitlock Ingram
and Ben Ingram (1)
Jeff Irwin, D.D.S. (37)
Mr. and Mrs. Blair Jacobson
Tom and Cathie Johnson
IMO Elizabeth J. Kindelberger (8)
Mary Kellam
IMO Robert C. Milsom (5)
Briana and Jeff Kent (3)
Arthur Kerr (42)
Diana M. Kobus (5)
The J & MA Krolkowski Fund (12)
John and Lisa Lemmex (6)
Michael Leonard (1)
Milan Markovich (2)
John & Cathy Mary (12)
Paul C. McBeth, III (4)
Jacquelin A. McCauley (11)
Dr. & Mrs. Brendan McGuire (6)
Richard and Nancy McKnight (35)
Catherine Mechling (26)
Mrs. Joan Milsom (22)
Jeff & Patty Nayhouse (23)
Mr. & Mrs. Richard L. Neish (13)
Mr. and Mrs. James O'Neill (25)
Deerfield Nimicks (5)
Todd and M'Lisa Oravitz (4)
Steven and Helen Patricia (16)
Mary Perrone
Rose M. Perryman (22)
Christopher and Mary Rawson (11)
Leslie and Peter Robinson (17)
Iva and Gene Saraceni
IMO our daughter,
Elyse Jeanne Saraceni (14)

Susan Sargent (10)
Gregg Schmidletter
and Lisa Gavlik (2)
Bob and Lori Shelow (6)
Martin Signore (1)
Jerald and Bonnie Solut (1)
Richard Stewart (5)
The Stoffel Family
IMO Dale Stoffel (10)
Caitlin Stritmatter (1)
Reverend James R. Torquato (13)
Charles and Sue Turner (33)
Michael and Lisa Walsh (22)
Ramona Ward (4)
Mr. and Mrs. Thomas E. Wash (17)
Henry and Rosemarie Wetzel (9)
Mr. and Mrs. Robert W.
Wickerham (34)
Julie Wiles (9)
Patti and Randy Wynkoop (14)

SPONSORS

\$250 - \$499

Anonymous
Anonymous
IMO Mary Helen Fuhrer
and Frank Fuhrer
Dr. & Mrs. Lee Agostini (32)
Charles and Veronica Anchors (13)
Joann S. Anderson (14)
Pamela Andreyko (2)
Nancy Arshoun (5)
Mary and Len Bach (9)
Dr. and Mrs. Ivan Baumwell (11)
George Bielich (7)
Joan Margaret Blasinsky (13)
Michael and Carol Bleier (21)
Robert C. Blough, Jr. (7)
Pamela Bolkovac (11)
Jean-Pierre Bonasso
IMO Stephanie Krick (12)
Michelle and George Bonnar (2)
Dale and Leigh Booker (7)
Kathleen Boykin (33)
Myron and Jeanne Caplan (1)
Kathy Charochak (1)
Tom and Dale Christopher (20)
Mr. Edward E. Clever
IMO Barbara J. Clever (15)
Tom, Liz & Shannen Clohyerty (4)
Michele Rone Cooper (19)
Steve Cuden
IMO Leon Zionts (5)
Bob and Judy Cunningham (1)
James and Carolyn
Cunningham (1)
Stacey Daily
IMO John Daily (3)
Alice DeCaria (2)
James and Theresa Doerfler (22)
Steven Doerfler (6)
Jeanne Drennan (3)
John Dreistadt (3)
Jacquelyn Ewalt (1)
Dr. Peggy Farrah
IMO brothers, Sonny

& Bobby Farrah (13)
Craig and Cynthia Flanagan (2)
Margaret Figgins
IMO David F. Figgins (44)
Robert and Helen Fitzgibbon (7)
Mr. Gene S. Forsythe (12)
Mr. and Mrs. Edward
Fortwangler (13)
Katherine and John Freed (14)
John and Elaine Frombach (5)
Ben and Michelle Gallagher (3)
John and Sandy Gandolfi (5)
Alvaro and Sandra
Garcia-Tunon (17)
The Clem Gigliotti Jr. Family (14)
Tom and Cathy Gothie (19)
Mr. & Mrs. Kurt Gottschalk (19)
David Gotwald & Peter Franzen (2)
Carolyn Grant (1)
Mr. and Mrs. William Greb (10)
Carol Sikov Gross
IMO Rhoda F. Sikov (5)
Robert D. Harrison (6)
Amy and Paul Hoback (9)
Mr. and Mrs. Ben Andrew Huber (4)
Russell W. Johnson
IHO Eileen B. Johnson (3)
Dr. & Mrs. Robert T. Jones, Jr. (35)
Ms. Sherdina Jones (6)
Dr. Chris & Mrs. Emily Kaufmann (5)
Mr. and Mrs. William B. Kent
IMO Peggy Paul (8)
Arthur Kerr (44)
Gary and Betty Kessler (14)
Maria Kovacs (8)
Emily Lambert (3)
Jeff and Teri Lammert (1)
Richard and Victoria Lapishka (1)
Joan E. Lavery
IMO John P. Lavery (24)
Mr. and Mrs. Shawn Leifheit (13)
Mr. and Mrs. Craig C. Linner (2)
David M. and Joyce E. Lipkin (9)
Margery J. Loevner (4)
Jennifer Long (4)
Mary MacPhail
Mr. & Mrs. Robert Madar (21)
Kay Manecke (10)
Richard Marciniak (18)
Dr. and Mrs. James McCann (13)
Mr. and Mrs. Samuel McClure (12)
Dr. Graham and Elizabeth
McIntosh (7)
Dr. Amy Mehta (1)
Mary Ann and Terry Mohr (12)
Carroll and David Morrison (11)
Ms. Bonita Mullaugh (12)
The Murray Family (9)
Tim and Carol Murray (8)
David & June Nimick (27)
Thomas M. Pakula (2)
Chris and Diana Patella (1)
David B. Patrick (1)
Ms. Lynley Pavkovich (5)



THANK YOU TO OUR PCLO DONORS

ACT 2 IS MADE POSSIBLE BY YOU!

SPONSORS CONT'D...

Warren and Sharlene Purring (11)
Dave and Meg Rauth (3)
Edward and Anna Marie Rice (19)
Mona and Bob Riordan (28)
John and Joni Roland (14)
Kristen Rohr (2)
Caryn Rubinoff and
Craig Dunham (1)
Don & Mary Rugh (24)
Mrs. John M. Sadler (11)
Paul Schamer (10)
Mary Seghi (25)
Cecilia Shepard IMO Robert Greer
Ronald and Linda Siegel (3)
Josh and Patricia Sivitz (2)
Ann K. Shaner (5)
Ira and Lucy Snyder
IHO Allan Snyder (7)
Susanne and Ron Sommer (12)
Mr. & Mrs. Marlis Stacy (9)
Mr. and Mrs. David R. Steinberg (24)
Jody Stockdill (2)
Cait and Spencer Sturgeon (3)
Robert and Vonnie Teagarden (5)
Gayle Tissue and
Yiannis Kaloyeropoulos (2)
Stephanie Veenis (2)
Nancy and Will Willems (12)
Al and Peg Williams (3)
Janice Wirth (15)
Gary and Diane Workman (7)
Tom Wyse, Jr. and Robert A. Neft (27)

LIMELIGHTERS

\$100 - \$249

Anonymous
Anonymous
IMO Agatha
Anonymous
IMO Richard S. Mowl Jr.
A. L. Abramovitz (9)
Kathryn Adams
IMO Forbes Adams (2)
John Aiello (7)
Kelly J. Albenze (1)
Dorcas Alexander
IHO Robert Alexander (1)
Ted and Donna Alexovich (7)
Elizabeth R. Amber
IMO Wayne Amber &
James Emswiller, CAS (11)
Mr. and Mrs. Anderson (1)
Sam Angelucci and
Catherine Blandi (1)
Sandy Artzberger (4)
George W. Ayres
IMO Joyce Davis Smith (6)
Debra Baldesberger (9)
Leroy and Ginger Ball (4)
Colleen Balsano (1)
Laura Barry
IHO The Awesome CLO Staff (10)
Dave and Trish Bartlett (1)
Mr. Gerald Bartolomucci (5)

Diane Berquist
IMO Michael J. Berquist, Esq. (5)
Kirk F Betteridge (1)
Jody Bishop (1)
Mr. David Blackmore (20)
Paul E. Block (23)
Michael Blow (1)
Cesare and Anita Shaw Brogneri
IMO Our Parents (1)
Jim Bobenage (1)
Sharon Bono (1)
Fran and Harvey Borovetz (1)
Michael and Maxine Botti IHO
Mike Botti (7)
Dorothy L Boyer (1)
Scott Bravold and
Lynda Davidson (12)
David and Karen Brienza (6)
Elizabeth Brokaw (1)
Emily Brooks (1)
The Brown Family (4)
Mary Ann Brown (2)
Mary Patricia Brown (16)
Mr. and Mrs. Steve Brown (3)
Mr. and Mrs. Edward E. Brunins (9)
Mr. Russ Carley (1)
Dan and Doreen Casey (9)
Helen Cestra (1)
Chris Chaney (1)
Vanessa Chapman (2)
Frank and Theresa Cicci (3)
Gary and Jo Ann Claus (31)
Nat and Diane Cohen
IHO Jim Mercer (19)
Erin Cook (1)
Ruth and Carl Crowe (2)
Fred and Joy Cullen (10)
Catherine M. Daily
IMO Hazel P. Daily (29)
George and Kathleen Daniels (7)
Steve Daquilanto (2)
Michael Davidow (1)
Dr. and Mrs. Tim DeBiasse (12)
Laura DeDi (1)
Michele DeGrazia (1)
Diane Deluca (2)
Peter and Melba Dibble (4)
Nick and Michele Ditullio (8)
Beth Ann Docherty
IMO Janet M. Docherty (11)
Mr. Paul S. Drost (22)
Scott J. Donaldson &
Michael Hunter (12)
Mr. and Mrs. Patrick Dunphy (27)
Mary Jane Edwards (9)
Timothy Eicher (1)
Gerald and Dawn Ellson (4)
Jenna Marie Enright Taylor (1)
Mike & Margie Evans (9)
Frank and Lisa Falcione (3)
Debby Fannin (1)
Mark and Carolyn Farabaugh (11)
George Farah (1)
Mr. Frederick Faraone (1)
Jacqueline Fennell (3)

Bob and Amy Ference
IMO Marie Ference (4)
Armand Ferrara (4)
Emily Ferri
IMO Edward and Carole Ferri (9)
Cheryl Ferri (2)
Kristian Feterik (3)
Mr. and Mrs. Robert Fiedler (12)
Tom and Sue Finegan (7)
Sarah Finney (3)
Jim and Paula Fiorucci
IMO Carol Fiorucci (17)
Bruce Fisher (1)
5 Js (16)
Peggy Forquer
IMO Betty Forquer (1)
Suzanne Fountain (1)
Mr. & Mrs. Paul K. Fox (31)
Kenneth T. Frankenbery (11)
John and Susan Frantz (2)
H. Ronald & Cynthia Fray (12)
Friedlander Family (12)
Linda Froehlich
IMO Richard D. Froehlich (4)
Michael D. Gaber (2)
Thomas Garnett (2)
Shirley Gaudette (1)
Bernard T. Geiser (1)
Damian and Hayah George (10)
Linda J. Haynes, MD (11)
Mr. and Mrs. William D. Ghrist III (21)
Rachel Gilman & Tina Cutone
IHO Abigail Gilman (4)
Angella Goetz (10)
Lisa Ann Goldsmith (1)
Stephen Graf (6)
Cyndy Graves (11)
Joann and Anthony Grieco (18)
Eddie Grimes
IMO Greg Triko (8)
Marjorie C. Gross (3)
Mark M. Gudalis (5)
Brandon Guzy (1)
Mr. Robert Haddox (1)
Dave and Beth Haines (1)
Denise Hampson (4)
Mr. and Mrs. Thomas R. Harley (4)
Niki Harris and Zane Weiner (8)
Donna Hazel (3)
Ms. Paula Heil (6)
Michael and Diane Hillebrand (1)
Janice L. Hixson (7)
Lois M. Hoffman
IMO Mr. and Mrs. Edward
Hoffman (21)
Iris Holleran (1)
Daniel and Vicki Holthaus (11)
Melissa Hook (8)
Larry and Denise Hoover (14)
Mr. Bruce Hostler (15)
Millie Hutchison (2)
Michael Iannone (1)
Diane Johnson (10)
Dr. and Mrs. Ralph E. Jones (6)
Ron and Eileen Jones (1)



THANK YOU TO OUR PCLO DONORS

ACT 2 IS MADE POSSIBLE BY YOU!

- William Jones (1)
Elaine Kaczmarek
IMO Dorothy Procupp
and Joanne Readshaw (21)
Jim and Cheryl Kassner (4)
Kelly and Walter Keller (2)
Patsy & PK Kennedy (4)
Roy and Lori Kern (4)
Russell Kern (1)
Mr. and Mrs. Kevin Killinger (6)
James and Nita Kincaid (1)
MaryAnn & Bill King (25)
Debra and Jack King (14)
James R. Kirsch
IMO Audrey K. Kirsch (14)
Mr. Dennis Knapp (1)
Diane Knechtel (21)
Bruce Knepper (1)
Dr. Stephanie Kobil (28)
Lou M. Kramer, Jr.
IMO Louis Kramer, Sr. (11)
Shawn and Judith Kramer (6)
Mac and Eileen Kravitz (17)
The Kubany Family (1)
Margaret and Dan Lackey (6)
Joan Lacomis (4)
Nancyann Letterio (6)
Neil and Sharon LeJeune (11)
Darren and Linda Leonard (16)
Dirk M. Lesnett (2)
Leslie and Rich Levine (5)
Jonathan Levinson (1)
Jeff and Rachel Lizik (8)
Kate Loy (4)
Jeff and Dr. Jae Luck (4)
Ronald and Christine Lunardi (24)
Robert Luttner (2)
Carole Malik (3)
Mr. & Mrs. Gregory D. Maloney (30)
Janet K. Manuel (17)
Rudy & Rose Marshalek (1)
Jim and Maribeth Masquelier (1)
David Maxwell (36)
Larry and Michaelene McCahan (32)
Mrs. Neva McClymonds
IMO John McClymonds (9)
Amanda McCoy (1)
Mark and Patricia McGinley (7)
Paul and Melissa McLane (6)
Mr. and Mrs. Daniel Meier
and Family (7)
Christine Matelan (1)
Bob and Chris Meyer (9)
Robert and Lynn Mialki (7)
Joseph and Gina Milcoff (5)
Robert and Amber Miles (6)
Justin J. Mohney (3)
Dr. and Mrs. James D. Moore (15)
Jeff and Crystal Moore (1)
Lee Morehouse (4)
Jim and Deborah Muders
IMO Tony Wieckowski (17)
Wendy Murdock (1)
Jennifer Murr (1)
- Richard Narvin
IHO My Bunny (3)
William Naylor
IMO Mary D. Naylor (2)
Marisa Nero (1)
William Noel (3)
Dan and Lisa Nydick (17)
Alice Oakes (5)
Michael J. O'Brien (3)
James Ohr (2)
Pascal Family (1)
Jo-Ann Paulenda (7)
Kathy & John Pechunka (15)
Richard and Deborah Peltier (1)
Vincent Petrocelli
IMO Carole L. Petrocelli (18)
Mark F. Piedmonte (5)
Mr. and Mrs. Stephen F.
Piskurich (26)
Mr. & Mrs. Donald J. Platt (27)
Cindy & John Pokora
IMO Lil Sciulli (12)
Kathy Jo Pollack (20)
Kenneth Powell (1)
Barry B. Premoshis (23)
Barbara Provenzano (20)
Jim and Maura Puchany (4)
Quality Repair Services, LLC (10)
Sue Quinn (4)
Pamela Rakosky (1)
Joshua and Brielle Reicks (5)
Edward M. Reppa, Jr. (17)
Mr. & Mrs. Frank Ricco Jr. (13)
Melinda Rietzel (2)
David and Sylvie Rigdon (7)
Denise & Rusty Roach (2)
Gary and Cookie Roberson (2)
Marcy Robertson (2)
Dante Romito (1)
Al Rose IMO Diane Rose (17)
Rosella Rosener (14)
Wendy Ruch (1)
Sally and Edmund Ruffin (1)
Kathy Ruffing (1)
Ms. Kathleen Sacco &
Mr. Andrew Greiner (2)
Frank and Denise Salopek (8)
Lisa Scales (2)
Dianne Scansaroli (9)
Mark Scappe (6)
Mr. Jim Schepis (1)
Mr. and Mrs. Daniel C. Schetley (11)
John C. Schlotterer (8)
Edward R. Schneider (4)
Carl W. Schultz (6)
Emily Busse Schwartz
IMO John and Maggie Busse (2)
Jim and Sheree Sciarretta (5)
Victoria and David Serafini (19)
Brian Sergi-Curfman (2)
Steve and Linda Sesack (2)
Madalaine T. Shigle
IMO Therese "Grammy"
Sciulli (5)
- Vincent J. Siciliano
IMO John A. Siciliano (39)
Teresa Sirianni (1)
Jacob and Rula Skezas (10)
Walter and Gayle Sklarsky
IMO Clara Sklarsky
and Sandra Cessna (16)
Bob and Chris Sloboda (8)
Joseph and Lynn Smith (10)
Ruth Snyder (2)
Tom and Karen Sochacki (2)
Lyn Sokol (1)
Steve Sokol (1)
Susan Sorbo (12)
Jocelyn Steele (2)
Carol M. Stein (18)
Mr. & Mrs. Gregory A. Stein (35)
Joe Stevens (9)
Jenny and Kelly Stewart (7)
Troy and Julie Stiffler (2)
Debra Stiger (6)
Mr. and Mrs. George S. Stipetich (3)
Mr. J. Stofcik (1)
Dennis and Allison Stombaugh (6)
Christine and Ronald Stout (1)
Wade and Barbara Stull (6)
Jayelyn Swink (3)
Janet L. Templer
IMO Carol R. McAuley (24)
Taylor Toth (1)
Charles F. Traeger &
Rita Powrozniak-Traeger (9)
Nancy and Gary Tuckfelt
IMO Jay and Renee Minsky (6)
Catherine Turner (25)
Penny Tzortzis (3)
Keith and Carol Unitas (3)
James and Dorothy Valimont (12)
Jane A. Vaselenak (4)
Matt and Dr. Anne Veres (5)
Kathleen M. and Emil P. Varnise (1)
Marilyn and Joseph Vettorazzi (9)
Janet Wagner (1)
William and Susan Wagner (1)
Dan and Lee Ann Wahl (4)
Jason Waltz (1)
Justin Weissert (1)
Jane Werner and Bob Rutkowski (1)
Karen and Fred Wheeler Jr. (3)
Michael and Shelby Wherry (6)
Dick and Margaret White (17)
Peggy C. Whitehurst (8)
Mr. David E. Winklmann (8)
Brandon Wolfe (1)
Carol Worstell
IMO Mildred Worstell (2)
Linda Wright (16)
Lawrence Yagoda (1)
Sam Yates (1)
Joseph Yuhasz (4)
Susan J. Zuk (8)
Dr. Paulina F. Zunino (5)
Susan Stanish Zurawsky (4)
Ms. Linda Zyroll (1)

THANK YOU TO OUR PCLO DONORS

ACT 2 IS MADE POSSIBLE BY YOU!



PITTSBURGH CLO WOULD LIKE TO THANK AND RECOGNIZE THE FOLLOWING MEMBERS OF THE LEGACY LEGENDS SOCIETY:

Paul Block
Jim Gretz
Robert C. McCartney
Paul and Paula Palmer
Jeffrey Lawrence Pollock, Esq.
Sally Wade
Reverend Thomas A. Wagner

For more information on the Legacy Legends Planning Giving Program, please visit our website at PittsburghCLO.org

Pittsburgh CLO thanks the Ambassadors and Wine Tasting & Silent Auction Donors for their generous support of the CLO Performance Season and CLO's Arts, Education, and Community Engagement Initiatives.

To update your preferred donor listing, please contact the CLO Development Office at 412-281-3973, ext. 4.



Pittsburgh
CLO

CELEBRATING MUSICAL THEATER

LEGACY LEGENDS

CLO LEGACY LEGENDS recognizes the dedicated supporters who share a vision for Pittsburgh CLO's future. Their bequests and other planned gifts will have a profound and lasting impact on the artistic quality of the work you see on our stages.

If you would like to join us in building that future, please consider becoming a **CLO LEGACY LEGEND** by naming Pittsburgh CLO as a beneficiary of your will or trust, IRA or other retirement plan, life insurance policy, life income, or other planned gift. Designating Pittsburgh CLO is not a complicated process and can often be done with a phone call to your investment adviser.

If you have already named CLO in your estate plans – let us know and we will add your name to our CLO LEGACY LEGENDS and include you in special recognition and benefits. **For more information, please contact Wynne Fedele, Director of Development at wfedele@pittsburghCLO.org or call 412-281-3973 x232.**



YOUR LEADING ROLE AWAITS!

*Did you know that a ticket only covers half
of the expenses of a PCLO production?*

*Charles Shaughnessy, star of PETER PAN, with
donors at Supper with the Stars*

**Join our vibrant donor community and help us keep
the curtain rising!**

- **\$100 GIFT** – Gain priority access to readings of new musicals and recognition in PCLO show playbills.
- **\$250 GIFT** – Go behind-the-scenes with an invitation for two to attend a reception and dress rehearsal of a PCLO show and enjoy two drink vouchers for the Benedum Center bars.
- **\$1,500 GIFT** (and above) – We cordially invite you to join our fabulous **Gene Kelly Producer's Society**, gaining access to thrilling opportunities to meet, mingle, and dine with stars and befriend fellow musical theater lovers! Furthermore, enjoy premier benefits such as year-round access to PCLO's concierge department for all your ticket exchanges and purchases; free reserved parking during PCLO shows; complimentary tickets; and more.



Donors at Dress Rehearsal Reception

**FOR MORE INFORMATION ABOUT DONOR BENEFITS AND
WAYS TO GIVE, VISIT PITTSBURGHCLO.ORG OR CALL OUR
DEVELOPMENT OFFICE AT 412-281-3973 EXT. 4**



**JOIN
OUR DONOR
FAMILY TODAY!**

The tax deductible amount of your contribution is limited by the excess of your contribution over the value of certain benefits provided by CLO. For more information, visit pittsburghCLO.org. A copy of the official registration and financial information may be obtained from the Pennsylvania Department of State by calling toll free, within Pennsylvania, 1-800-732-0999. Registration does not imply endorsement.

SPECIAL THANKS



The Pittsburgh CLO Gallery of Heroes in-school program is sponsored by The National Endowment for the Arts, Highmark Blue Cross Blue Shield, The Massey Charitable Trust, The Pittsburgh Foundation, Allegheny Foundation, Healthcare Reality, Cooper-Siegel Family Foundation, Laurel Foundation and UPMC.

The Gene Kelly Awards are sponsored by The Michael J. Kara Family, Deloitte, the Gismondi Family Foundation, Highmark Blue Cross Blue Shield, PNC, and the CLO Ambassadors.

The Charles Gray Award for Special Achievement in Arts Education is underwritten by the Roy A. Hunt Foundation.

The CLO New Horizons is made possible in part by UPMC, Highmark Blue Cross Blue Shield, The Pittsburgh Foundation, Allegheny Foundation, Bellin/Coontz Family Giving Fund, Bender Consulting Services, Cooper-Siegel Family Foundation, PriceWaterhouseCoopers, and the Edith L. Trees Charitable Trust.

Stars of Pittsburgh CLO's Summer Series dine at the Grand Concourse Restaurant at Station Square.

The Official Hotel of Pittsburgh CLO. The Official Airline of Pittsburgh CLO. The Official Car Provider of Pittsburgh CLO.

OMNI WILLIAM PENN **DELTA** AIR LINES **Cochran**

EQT New Musicals Commissioning Fund

The purpose of the EQT New Musicals Commissioning Fund is to identify and commission writers both in Pittsburgh and across the country to write new musicals for the Pittsburgh CLO Summer Season, Cabaret and Gallery of Heroes program.

NOW THROUGH AUGUST 31ST!

SUMMER STAYCATION

FREE ADMISSION

WITH ALLEGHENY COUNTY LIBRARY CARD & RESERVATION

RADPASS.ORG

SEE OFFERS FROM SOME OF PITTSBURGH'S FAVORITE ATTRACTIONS AND BOOK YOUR STAYCATION PASS WITH THIS QR CODE:



PITTSBURGH'S WILDEST FUNDRAISER

A Secret Garden

SUMMER SAFARI

PRESENTED BY
UPMC HEALTH PLAN

FRIDAY, JUNE 20

TICKETS AT
PITTSBURGHZOO.ORG



**When communities
need a hand,
we go all in.**



HIGHMARK.

BrightBlueFutures

community · health · resilience

Federated Investors Foundation, Inc.
is proud to support

Pittsburgh CLO's Broadway Bound Gala

Federated
Hermes

Federated
Hermes

FederatedHermes.com
© 2025 Federated Hermes, Inc.
Q457015 (4/25)

FROM DREAM HOMES *to dream roles*

*Howard Hanna is proud to sponsor
Pittsburgh CLO's Broadway Bound Gala!*



HowardHanna.com



The Director and Choreographer are members of the Stage Directors and Choreographers Society, a national theatrical labor union.



United Scenic Artists represents the designers and scenic painters for the American Theatre.



Backstage and Front of the House Employees are represented by the International Alliance of Theatrical Stage Employees (or I.A.T.S.E.).



The actors and stage managers employed in this production are members of Actors' Equity Association, the union of professional actors and stage managers in the United States.



The Musicians, Conductors, Music Preparation Personnel and Librarians employed in this production are members of the American Federation of Musicians of the United States and Canada.



Pittsburgh CLO receives state arts funding support through a grant from the Pennsylvania Council on the Arts, a state agency funded by the Commonwealth of Pennsylvania and the National Endowment for the Arts, a federal agency.



The Allegheny Regional Asset District, a county agency created to support and finance regional assets, including libraries, parks, cultural groups, sports and civic facilities, and to distribute tax relief to the 128 municipalities of Allegheny County.



The National Endowment for the Arts is a public agency dedicated to supporting excellence in the arts, both new and established; bringing the arts to all Americans; and providing leadership in arts education. Established by Congress in 1965 as an independent agency of the federal government, the Endowment is the nation's largest annual funder of the arts, bringing great art to all 50 states, including rural areas, inner cities, and military bases.



Pittsburgh
CLO
AMBASSADORS



BECOME A PITTSBURGH CLO AMBASSADOR TODAY!

The mission of the Pittsburgh CLO Ambassadors is to support and broaden the reach and diversity of the Pittsburgh CLO and to make musical theatre an active and accessible part of the lives of its members and others through the organization of and participation in a combination of theatrical, social, fundraising, volunteer, and educational events.



pittsburghCLO.org/Ambassadors



PITTSBURGH CLO STAFF

Mark Fleischer, *Executive Producer*

SALES & MARKETING

Sharon Goldstein.....*Director of Sales and Marketing*
 Sidney Franczak.....*Marketing Manager*
 Kyle J. Malinosky.....*Marketing Coordinator*
 Alexa Yanyanin.....*Ticketing and Communications Manager*
 Special thanks to the Pittsburgh Cultural Trust Ticketing, Group Sales, and Patron Services teams for their invaluable support and collaboration.

DEVELOPMENT

Wynne Fedele.....*Director of Development*
 Molly Campe.....*Manager of Special Events and Projects*
 Brandon Marzke.....*Manager of Individual Giving*
 Tom McGee.....*Corporate and Foundation Relations Manager*
 Dayna Sowers.....*Board Liaison/Development Coordinator*
 Levi Von Iderstein.....*Development Data Coordinator*
 Sia Zhang.....*Development Associate*

FINANCE & ADMINISTRATION

Angela Langill.....*Director of Finance and Administration*
 Michael J. Cerchiaro.....*General Manager*
 Shelby Hinkle.....*Human Resources Consultant*
 Kuei-O Lin.....*Accountant*
 Makenzie Shimko.....*Accounting & HR Coordinator*
 Angie Staats.....*Seasonal Company Manager*
 Tom Stumme.....*Executive Assistant*
 Amanda Wilcox.....*Controller*

EDUCATION

Jim Scriven.....*Director of Education*
 Patty Maloney.....*Academy Principal*
 Brady D. Patsy.....*Community Engagement Manager*
 Aidan Quartana.....*Education Associate*
 Alexander Righetti.....*Education Operations Coordinator*

PRODUCTION/CONSTRUCTION CENTER

Billy Mason.....*Associate Producer*
 Macarena Subiabre.....*Production Manager*
 Anna Hanson.....*Producing Assistant*
 David Hartley.....*Technical Director*
 Michele Sullivan.....*Construction Center Business Manager*
 BJ Lipari.....*Scenic Charge*
 Brendan Smith.....*Foreman*
 Matthew Abate.....*Welder*
 Michael Bannias.....*Journeyman, Key Carpenter*
 Fredrich Drenkow.....*Key Carpenter*
 Ryan Geraghty.....*Key Carpenter*
 Peter Hartley.....*Electrician*
 Anna-Lena Kempen.....*Scenic Painter*
 Robert Pell.....*Journeyman*
 Randy Schanz.....*Journeyman*

MADAME CLICQUOT PRODUCTION

Deanna Berryhill.....*42nd Parallel Production Costume Intern*
 Dalton Bertolone.....*Assistant to the Director and Choreographer*
 Holly M. Breuer.....*Scenic Designer*
 Catie Brown.....*Music Supervisor, Rehearsal Pianist,*
Associate Music Director
 Pamela Brusoski.....*Production Stage Manager*

Janet Groom Campbell.....*Costume Designer*
 Emily Carleton.....*Stage Management Production Assistant*
 Matt Castle.....*Associate Director, Music Arranger*
 Mark Ciglar.....*Projection Designer*
 Kaitlyn Clougherty.....*Youth Performer Supervisor*
 Lisa Ann Goldsmith.....*Dialect Coach*
 Costume World.....*Select Costumes Provided By*
 Tomé Cousin.....*Intimacy Coordinator*
 Sherry Deberson.....*Hair and Makeup Designer*
 Dalton Bertolone.....*Dance Captain, Assistant to the Director*
 Frank Galgano.....*Associate Director, Music Arranger,*
and Orchestrator

Kenneth Gartman.....*Music Director, Conductor*
 Jasper Gitlitz.....*Production Assistant*
 Laurie Glodowski.....*Director, Choreographer*
 Lisette Glodowski.....*Book, Music, Lyrics*
 Kelly Haywood.....*Assistant Stage Manager*
 Kevin Hogan.....*Assistant Head Electrician*
 George Hoydich.....*Music Coordinator*
 Geoff Josselson.....*CASTING DIRECTOR*
 Dan Kendgia.....*Head Electrician*
 Randy Kovitz.....*Fight Director*
 Andrew Kutrufis.....*Head Carpenter*
 Jillienne Leigh.....*Assistant to the Choreographer*
 Doug Levine.....*Rehearsal Pianist*
 Kathy Matthews.....*Hair and Makeup Supervisor*
 Hope F. Michelson.....*Assistant Stage Manager*
 Paul Miller.....*Lighting Designer*
 Robert Neumeyer.....*Music Supervisor, AFM Music Arranger*
 J. Alex Noble.....*Fight Captain*
 Carolina Nowak.....*Hemsley Lighting Assistant*
 Taylor Oberle.....*Head Props, Props Coordinator*
 Hudson Orfe.....*Rehearsal Pianist*
 Chris Renaud.....*Music Assistant*
 Alexander Schumann.....*Video Programmer*
 Evan Shoaf.....*Assistant Head Carpenter*
 Sam Silva.....*Sound Designer*
 Jeremy Spitzer.....*Costume Assistant*
 Kathie Sullivan.....*Wardrobe Supervisor*
 Brendan Smith.....*Shop Foreman*
 Richard C. Walter.....*Book, Music, Lyrics*

PITTSBURGH CLO SUMMER 2025 INTERNS

Elizabeth Amen.....*Production*
 Skyler Bruno.....*Education*
 Kylie Capsambelis.....*Company Management*
 Stella Frazer.....*Graphic Design*
 Danielle Guthrie.....*Sales & Marketing*
 Elana Kaplan.....*Production Management*
 Katerina Larrick.....*Education*
 Rachel Laurence.....*Sound Design*
 Kaitlyn Majewski.....*Education*
 Rachel Olson.....*Props*
 Grace Schmader.....*Education*
 Julia Shavel.....*Merchandise & Lobby*
 Trey Tillotson.....*Development*
 Jackson Underwood.....*Costume Design*
 Emily Wickham.....*Theater Management*

*Members of Actors' Equity Association, the union of professional actors and stage managers in the United States.



Plan **Smart.** Retire **Confident.**

As you close one chapter of your career and prepare for the next, it's natural to feel overwhelmed about the future. But with the right planning, you can ease the burden and create a legacy that's both fulfilling and impactful. At **GBU Life**, we simplify preparation for your retirement with annuities that can help you focus on what truly matters.



Visit **gbu.org** and start a new chapter.

GBU Life is the marketing name for GBU Financial Life. Life insurance is underwritten and annuities are offered by GBU Financial Life (GBU), Pittsburgh, PA. Please see policy and rider coverage for complete details. GBU and its agents do not provide legal, financial or tax advice. Please consult with a professional for such matters. Policy and features are subject to approval and may not be available in all states. GBU is not affiliated with Pittsburgh Cultural Trust. GBU-TRUSTPYR-AD-0225

4254 Saw Mill Run Blvd., Pittsburgh, PA 15227
412-884-5100 800-765-4428 sales@gbu.org