



Pittsburgh
CLO



LERNER & LOEWE'S
CAMELOT

SPONSORED BY:

JOAN
CLARK
DAVIS

#PCLOCamelot | @PittsburghCLO

UP NEXT!



Pittsburgh
CLO

BACK TO THE FUTURE THE MUSICAL



JULY 1 - 6
BENEDUM CENTER



Great Scott! **BACK TO THE FUTURE**, the beloved, cinematic classic is now a Broadway musical with its destination set for Pittsburgh in 2025. When Marty McFly finds himself transported back to 1955 in a time machine built by the eccentric scientist Doc Brown, he accidentally changes the course of history. Now he's in a race against time to fix the present, escape the past, and send himself... back to the future. Winner of the 2022 Olivier Award for Best New Musical, when **BACK TO THE FUTURE** hits 88mph, it'll change musical theater history forever.

*Co-Creators: Bob Gale & Robert Zemeckis,
Book by Bob Gale, Music & Lyrics by Alan Silvestri and Glen Ballard*

PITTSBURGH CLO BOARD OF DIRECTORS



OFFICERS



Joseph V. DiVito, Jr.
CHAIRMAN OF THE BOARD



Edward T. Karlovich
PRESIDENT

HONORARY CHAIRMAN OF THE BOARD

Julie Andrews

CHAIRMAN OF THE BOARD

Joseph V. DiVito, Jr.

PRESIDENT

Edward T. Karlovich

VICE PRESIDENTS/ CABARET THEATER

John Dick
Meghan Barrera
Leah Ohodnicki

VICE PRESIDENT/ CLO AMBASSADORS

Christy Kobus

VICE PRESIDENT/ CONSTRUCTION CENTER & FACILITIES

Nicholas J. Liparulo
Deedra Knaus

VICE PRESIDENTS/ DEVELOPMENT

Mark J. Minnaugh
Laurie M. Mushinsky

VICE PRESIDENTS/ EDUCATION

Christine M. Kobus
George Gans

VICE PRESIDENTS/ FINANCE

Timothy K. Zimmerman
Brian Koble
Richard J. Lipovich

VICE PRESIDENTS/ HUMAN RESOURCES

Lesley Evancho

VICE PRESIDENTS/ MARKETING

Jon Galatis
Leah Ohodnicki

VICE PRESIDENTS/PRODUCTION, NEW WORKS DEVELOPMENT & FUNDING

Peter J. Germain
Dennis Unkovic
Stephen S. Bloomburg

VICE PRESIDENTS/ NOMINATING

Scott F. Neill
Glenn D. Todd

VICE PRESIDENTS/ PLANNING

Luke A. Sizemore
LaShawnda Thomas

VICE PRESIDENTS

Pritam Advani
Daniel I. Booker
Sherri Grasak
Richard S. Hamilton
Laura Penrod Kronk

SECRETARY

Johanna G. O'Loughlin

TREASURER

Richard J. Lipovich

PRESIDENT OF THE BOARD EMERITUS

Robert C. McCartney

EXECUTIVE PRODUCER EMERITUS

Van Kaplan

CORPORATE COUNSEL

James M. Doerfler

CHAIRMAN OF THE BOARD EMERITUS

Louis D. Astorino
Daniel I. Booker
Helen Hanna Casey
George A. Davidson, Jr.
Joseph C. Guyaux
William M. Lambert
Alexander Overstrom
James E. Rohr

DIRECTORS

Joyce A. Bender
Patricia M. Blenko
Chris Brussalis
Jane Dixon
Clare Donahue
Paul Hennigan
Leslie Hyde

Brian Koble
Deedra Knaus
Diane B. Landers
Nicholas J. Liparulo
Margaret McLean
Timothy M. McVay
Christina P. O'Toole

Robin S. Randall
Eric A. Schaffer
Gregg Schmitter
Arlene Sokolow
Helen Spalaris
LaShawnda Thomas
Joann L. Tissue

The Honorable
Debra Todd
Carla J. Vrsansky
Jake Wheatley, Jr.
Jason H. Wilson, Jr.

ADVISORY BOARD

George Ator

Joan Bogut

Charles R. Fallon

Rosemarie R. Parse, Ph.D.

Melvin D. Rex



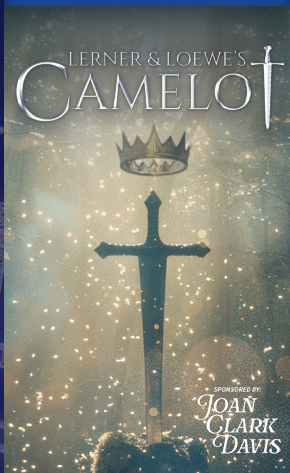
CELEBRATING MUSICAL THEATER

SUMMER 2025

FROM THE SILVER SCREEN TO THE STAGE

 PNC SUMMER OF MUSICALS

ROMANCE



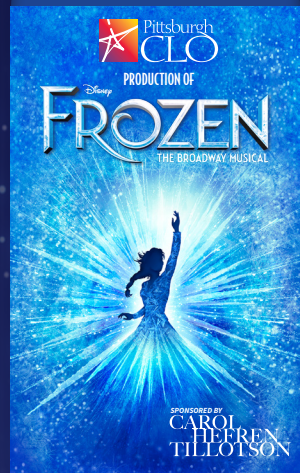
JUNE 17 - 22

ADVENTURE



JULY 1 - 6

MAGIC



JULY 18 - 27

JOIN US AT THE
BENEDUM CENTER!

ALL SHOWS
ON SALE
NOW!

PITTSBURGH CLO  412-456-6666

Groups 10+ SAVE! Call 412-471-6930





Dear Friends,

Welcome to Pittsburgh CLO's production of **Lerner & Loewe's CAMELOT** and the launch of our 2025 PNC Summer of Musicals at the Benedum Center!

It is a true honor to welcome you to this beloved musical not only as Executive Producer of Pittsburgh CLO, but also as the show's Director. This marks my directing debut at Pittsburgh CLO, and I am thrilled to be sharing this legendary and lyrical tale with you from both sides of the stage.

Since its debut in 1960, **CAMELOT** has captivated audiences with its sweeping score, romantic ideals, and enduring message. Based on T.H. White's *The Once and Future King*, the story explores the timeless tensions between idealism, reality, leadership and sacrifice, love and loyalty. **Lerner & Loewe's CAMELOT** reminds us of the resilience of hope and the power of vision, even in the face of heartbreak.

We are deeply grateful to bring this production to the stage, and we extend heartfelt thanks to our Show Sponsor, **Joan Clark Davis** for her generous support.

Every young performer on stage is a student of the Pittsburgh CLO Academy for Musical Theater. These rising stars are the next generation of artists, nurtured right here in our community. If you know a young person eager to explore their passion for performance, we invite you to discover our Summer Camps and training programs at PITTSBURGHCLO.ORG/EDUCATION

The excitement continues this summer with our 2025 PNC Summer of Musicals at the Benedum Center: **BACK TO THE FUTURE: The Musical (July 1-6)**, and Pittsburgh CLO's production of **Disney's FROZEN (July 18-27)** sponsored by Carol Hefren Tillotson. Each show will bring romance, adventure, and pure theatrical magic to the stage.

As we begin a summer filled with music, imagination, and shared moments, I thank you for choosing to be with us. Your presence supports our mission and fuels the magic that only live theater can offer.

Thank you for being with us. Welcome to **CAMELOT** — and welcome to the 2025 Summer of Musicals!

With gratitude,

Mark Fleischer
Executive Producer
Director, *Lerner & Loewe's Camelot*
ExecutiveProducer@PittsburghCLO.org



Celebrating the brilliance of Pittsburgh.

It takes dedication, hard work, and a smart and steady approach to help a community thrive. That's why PNC is proud to celebrate the Pittsburgh CLO for all it does to help make our community brilliant.



**BRILLIANTLY
BORING
SINCE 1865™**

Brilliantly Boring since 1865 is a service mark of The PNC Financial Services Group, Inc.
©2025 The PNC Financial Services Group, Inc. All rights reserved.
PNC Bank, National Association. **Member FDIC.**



PNC BANK

**BRILLIANTLY
BORING
SINCE 1865SM**

Welcome once again to the Pittsburgh CLO's PNC Summer of Musicals!

Since we can't sing or dance like the brilliant artists you'll see on stage, we're proud to be the premier sponsor of this exciting annual series. These all-new productions of timeless classics and modern masterpieces are guaranteed to thrill audiences from across our region and beyond.

We're equally proud of our long-standing relationship with Pittsburgh CLO. The PNC Summer of Musicals and other CLO presentations are premier attractions to Pittsburgh's thriving Cultural District, drawing thousands of visitors to our city every year. Our support also helps to sustain CLO's Academy of Musical Theater for children, providing vital opportunities for young talent to thrive.

Thank you for being here and being a part of it all.

Enjoy the show!

Sincerely,

Louis R. Cestello

PNC

Head of Regional Presidents

Brilliantly Boring since 1865 is a service mark of The PNC Financial Services Group, Inc.

©2025 The PNC Financial Services Group, Inc. All rights reserved.

CON PDF 0524-057-2470001

THEATER CONNECTS THE WORLD. SO DO WE.

Just like the Pittsburgh CLO, we're passionate about bringing people together, creating meaningful moments and inspiring new heights.

Delta is proud to be the official airline partner of the Pittsburgh CLO.



KEEP CLIMBING



JOAN CLARK DAVIS



Dear Friends and Fellow Musical Theater Lovers,

It is my pleasure to welcome you to Pittsburgh CLO's production of **Lerner & Loewe's CAMELOT**. I am so proud to be sponsoring this production. As a lifelong admirer of the classics of American musical theater, I consider **CAMELOT** to be among the best loved musicals of all time.

From a young age, I have been enchanted by the magic of live theater, Pittsburgh CLO consistently excels in bringing these timeless stories to life, presenting the classics the way they were meant to be seen and heard – with full orchestras, beautiful sets and costumes, and the best talent from Broadway, Pittsburgh and across the country. However, producing high-quality shows involves significant and increasing costs. Recognizing this, I felt compelled to support Pittsburgh CLO in a meaningful way.

Sponsoring this production is my way of giving back to an organization that has brought joy and inspiration to me and countless others over the years. **CAMELOT**, with its moving tale of love, loyalty, and leadership exemplifies how classic musicals endure across the generations.

By joining me in supporting this wonderful organization, you help sustain the vibrant spirit of musical theater in our community, ensuring that our families, friends, and neighbors can continue to enjoy the beloved classics.

Enjoy the show!

With best wishes,

Joan Clark Davis
Pittsburgh CLO Donor
Lerner & Loewe's Camelot Show Sponsor



SCAN THE QR CODE
TO DONATE TODAY!

The Final Act:

Libations



IN PITTSBURGH'S
ONLY ORIGINAL
HOTEL SPEAKEASY



OMNI

WILLIAM PENN

530 WILLIAM PENN PLACE

JUNE 17 - 22, 2025



MARK FLEISCHER, *Executive Producer*
Presents

LERNER & LOEWE'S CAMELOT

BOOK AND LYRICS BY
ALAN JAY LERNER

MUSIC BY
FREDERICK LOEWE

ORIGINAL PRODUCTION DIRECTED & STAGED BY **MOSS HART**

BASED ON "THE ONCE AND FUTURE KING" BY **T.H. WHITE**

AT THE **BENEDUM CENTER**

STARRING

ADAM KANTOR
KYLA STONE • BEN JACOBY

ALSO STARRING

FINNEGAN COMBER • JOHN L. GRIMSLEY • ALEXANDER PODOLINSKI • ANDREA WEINZIERL

WITH

**BRETT BARTHELEMY • BELLA BILANDZIJA • RYAN CAVANAUGH • BOBBY M. DAVIS • JORDAN T. DELEON
KYLIE EDWARDS • MARJORIE FAILONI • MICHAEL GREER • LAURA GULEY • LIZ LECLERC • VICTORIA MADDEN
MAILE ORAVITZ • LATREA D. REMBERT • KAI SACHON • DONOVAN ELLIOT SMITH • ALLAN M. SNYDER
LOLA ARMFIELD • CARSON BRUCE • DUNCAN MCCRIMMON • LINNEA MCKINNEY
PIPER REDFORD • HARRISYN SCHILPP • CARIS TOMACESKI • GUS**

SCENIC & VIDEO DESIGNER
BRYCE CUTLER

LIGHTING DESIGNER
PAUL MILLER

ORIGINAL COSTUMES
DESIGNED BY:
JENNIFER MOELLER

ADDITIONAL COSTUMES
DESIGNED BY:
CLAUDIA BROWNLEE

SOUND DESIGNER
SARAH SPECK

HAIR AND MAKEUP DESIGNER
JEFF A. KNAGGS

PRODUCTION STAGE MANAGER
RENÉE RIMLAND

CASTING
GEOFF JOSSELSO CASTING

ANIMALS BY
WILLIAM BERLONI

FIGHT DIRECTOR
RANDY KOVITZ

MUSIC DIRECTOR

ROBERT NEUMEYER

CHOREOGRAPHER

MARA NEWBERY GREER

DIRECTOR

MARK FLEISCHER

The Director is a member of the STAGE DIRECTORS AND CHOREOGRAPHERS SOCIETY, a national theatrical labor union.

LERNER AND LOEWE'S CAMELOT is presented through special arrangement with Music Theatre International (MTI).

All authorized performance materials are also supplied by MTI.

www.mtishows.com

THE VIDEOTAPING OR MAKING OF ELECTRONIC OR OTHER AUDIO AND/OR VISUAL RECORDINGS OF THIS PRODUCTION OR DISTRIBUTING RECORDINGS ON ANY MEDIUM, INCLUDING THE INTERNET, IS STRICTLY PROHIBITED, A VIOLATION OF THE AUTHOR'S RIGHTS AND ACTIONABLE UNDER UNITED STATES COPYRIGHT LAW.

Pittsburgh CLO is a founding member of the National Alliance for Musical Theatre,
Independent Presenters Network and The Broadway League.



60 YEARS

of Bringing
Down the House

As we celebrate our diamond anniversary, we're exceedingly grateful for all our customers both past and present. Please know that we're as devoted as ever to delivering a sales and service experience that wows you again and again.

#1 Cochran **GO 1 BETTER**
cochran.com

Official Vehicle Provider for Pittsburgh CLO

AUDI | INFINITI | CADILLAC | MERCEDES-BENZ | BUICK | GMC | NISSAN | CHEVROLET | VOLKSWAGEN
TOYOTA | FORD | HONDA | SUBARU | MAZDA | KIA | HYUNDAI | CHRYSLER | JEEP | DODGE | RAM



CAMELOT - CAST ALPHABETICAL

Lady Anne.....	Bella Bilandzija*
Sir Sagamore.....	Ryan Cavanaugh*
Tom of Warwick.....	Finnegan Comber ⁺
Sir Colgrevice.....	Bobby M. Davis*
Lady Sybil.....	Kylie Edwards*
Merlyn.....	John L. Grimsley*
King Pellinore.....	John L. Grimsley*
Squire Dap.....	Michael Greer*
Sir Caster.....	Michael Greer*
Lady Catherine.....	Laura Guley*
Lancelot du Lac.....	Ben Jacoby*
King Arthur.....	Adam Kantor*
Nimue.....	Liz Leclerc*
Page.....	Duncan McCrimmon ⁺
Mordred.....	Alexander Podolinski*
Sir Gwilliam.....	Kai Sachon*
Sir Lionel.....	Donovan Elliot Smith*
Sir Dinadan.....	Allan M. Snyder*
Guenevere.....	Kyla Stone*
Morgan Le Fey.....	Andrea Weinzierl*
Horrid.....	Gus

DANCE CAPTAIN

Marjorie Failon*

ENSEMBLE

Brett Barthelemy*, Bella Bilandzija*, Ryan Cavanaugh*, Bobby M. Davis*, Jordan T. DeLeon*,
 Kylie Edwards*, Michael Greer*, Laura Guley*, Liz Leclerc*, Victoria Madden*, Maile Oravitz*,
 Kai Sachon*, Donovan Elliot Smith*, Allan M. Snyder*, Lola Armfield⁺, Carson Bruce⁺,
 Duncan McCrimmon⁺, Linnea McKinney⁺, Piper Redford⁺,
 Harrisyn Schilpp⁺, Caris Tomaceski⁺

UNDERSTUDIES

Merlyn, King Pellinore - Ryan Cavanaugh* | Guenevere - Liz Leclerc*
 Tom of Warwick - Duncan McCrimmon⁺ | King Arthur - Alexander Podolinski*
 Mordred - Kai Sachon* | Lancelot du Lac - Allan M. Snyder*

SWINGS

Marjorie Failoni* | LaTrea D. Rembert*

*Members of the Actors' Equity Association, the union of professional actors and stage managers in the United States.

⁺Students of the Pittsburgh CLO Academy of Musical Theater



MUSICAL NUMBERS

ACT I

Overture.....Orchestra

PROLOGUE: A Battlefield Near Joyous Gard

- A Long Time Ago

Guenevere.....Ensemble

SCENE 1: A Hilltop Near The Castle At Camelot

- Eight Years Earlier

I Wonder What The King Is Doing Tonight.....Arthur

The Simple Joys of Maiden hood.....Guenevere

Camelot.....Arthur

Reprise: Camelot.....Guenevere

Follow Me.....Nimue

SCENE 2: The Royal Bedchamber

- Five Years Later

SCENE 3: Countryside Not Far From The Gates Of Camelot

- The First Of May, A Few Months Later

C'est Moi.....Lancelot

SCENE 4: A Park Near The Castle

- Immediately Following

The Lusty Month Of May.....Guenevere and Ensemble

SCENE 5: A Terrace Of The Castle

- Two Weeks Later

How To Handle A Woman.....Arthur

SCENE 6: The Jousting Fields

- The Next Day

The Jousts.....Arthur, Guenevere, and Ensemble

Before I Gaze At You Again.....Guenevere

SCENE 7: The Great Hall

- Immediately Following



MUSICAL NUMBERS

INTERMISSION

There will be one fifteen-minute intermission.

ACT II

Entre' Act.....Orchestra

SCENE 1: The Throne Room

- A Few Years Later

Madrigal & If I Ever Would Leave You.....Lancelot

The Seven Deadly Virtues.....Mordred

SCENE 2: The Terrace Of The Castle & Later The Royal Bedchamber

- A Month Later

What Do The Simple Folk Do.....Arthur and Guenevere

SCENE 3: A Forest Near Camelot

- The Next Day

SCENE 4: The Armory

- That Same Night

Fie On Goodness.....Mordred and Knights

SCENE 5: The Royal Bedchamber

- Immediately following

I Loved You Once In Silence.....Guenevere

SCENE 6: The Castle Courtyard

- A Month Later

Guenevere.....Ensemble

SCENE 7: A Battlefield Near Joyous Gard

- A Few Weeks Later

Reprise: Camelot.....Arthur



PRODUCTION OF



Disney

FROZEN

THE BROADWAY MUSICAL

SPONSORED BY
CAROL
HEFREN
TILLOTSON

JULY 18 - 27

BENEDUM CENTER



Set the magic free with Disney's spectacular, award-winning musical, Pittsburgh CLO's production of **Disney's FROZEN**. This jaw-dropping production will melt hearts of all ages with its extravagant beauty, iconic music, and hilarious fun. **Disney's FROZEN** is an unforgettable journey packed with lovable characters, thrilling surprises, and soaring music, including twelve new songs written especially for the show, alongside all the classics such as "For the First Time in Forever," "Do You Want to Build a Snowman?" and the worldwide smash-hit, "Let it Go."

Music and Lyrics by Kristen Anderson-Lopez & Robert Lopez, Book by Jennifer Lee



PITTSBURGH CLO ORCHESTRA

Robert Neumeyer, *Conductor*
George Hoydich, *Musical Coordinator*

Keyboard.....Catie Brown

Violin 1.....Rochelle Agnew and Rebecca Neukom

Violin 2.....Ashley Freeburn and Marybeth Schotting

Viola.....Louise Farbman and Jen Gerhard

Cello.....Joe Bishkoff and Paige Riggs

Bass.....Jeff Mangone Sr.

Reed 1.....Tom Godfrey

Reed 2.....Cindy Anderson

Reed 3.....Alix Reinhardt

Reed 4.....Sam Eisenreich

Reed 5.....Linda Morton Fisher

Trumpet 1.....Dave Wingenbach

Trumpet 2.....Drew Fennell

Trumpet 3.....David Anderson

Horn 1.....Jon Carroll

Horn 2.....Brooke Boehmer

Trombone 1.....Bob Matchett

Trombone 2.....Glenn Wayland

Drums.....RJ Heid

The engagement of Mark Fleischer, our esteemed Director for *Lerner & Loewe's CAMELOT* is underwritten through the generous support of

Joe and Kathy Guyaux



NEXT GENERATION
CAMPAIGN



WHO'S WHO



**ADAM
KANTOR**



**KYLA
STONE**



**BEN
JACOBY**



**FINNEGAN
COMBER**



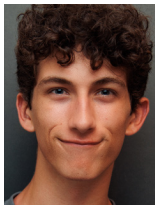
**JOHN L.
GRIMSLEY**



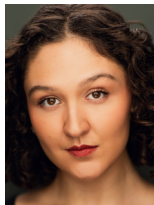
**ALEXANDER
PODOLINSKI**



**ANDREA
WEINZIERL**



**BRETT
BARTHELEMY**



**BELLA
BILANDZIJA**



**RYAN
CAVANAUGH**



**BOBBY M.
DAVIS**



WHO'S WHO



**JORDAN T.
DELEON**



**KYLIE
EDWARDS**



**MARJORIE
FAILONI**



**MICHAEL
GREER**



**LAURA
GULEY**



**LIZ
LECLERC**



**VICTORIA
MADDEN**



**MAILE
ORAVITZ**



**LATREA D.
REMBERT**



**KAI
SACHON**



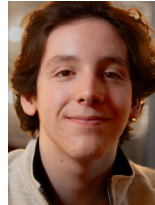
**DONOVAN
ELLIOT SMITH**



**ALLAN M.
SNYDER**



**LOLA
ARMFIELD**



**CARSON
BRUCE**



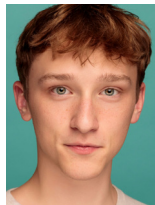
**DUNCAN
MCCRIMMON**



**LINNEA
MCKINNEY**



**PIPER
REDFORD**



**HARRISYN
SCHILPP**



**CARIS
TOMACESKI**



GUS

Carnegie
Mellon
University

THE SCHOOL OF DRAMA

PROUD PARTNER OF THE
PITTSBURGH CLO



Pictured: Alex Sheffield and Savannah Lee Birdsong in "A Little Night Music" by Stephen Sondheim and Hugh Wheeler. Director: Ethan Heard Music Director: Riek Edinger Scenic Design: Paul Molina Costume Design: Evan Riley Lighting Design: Jessica Winward Photo by Dave Rubin dsrphoto.com, 2024



drama.cmu.edu



CHANGING HEALTH CARE CHANGING LIVES

LIFE CHANGING MEDICINE

At UPMC, we don't imagine possibilities—we pioneer them.

Challenging conventional thinking. Uncovering never-before-imagined treatments and turning them into reality. Every day, we are redefining what health care can be and empowering you to live your best life.

upmc.com/ChangingLives

UPMC
LIFE CHANGING MEDICINE

Shaping a **Safer** Future.

MSA Safety is a company dedicated to helping protect the world's workers. But helping to protect and enhance our communities is part of the MSA mission, too. We do this by serving people, supporting the arts, assisting charitable organizations, protecting the environment and always acting with integrity. Good corporate citizenship is the best way we can help ensure a sustainable future for both MSA and our world.



One Mission. One Passion. One Purpose.

www.msasafety.com

Pittsburgh Post-Gazette

**TOP
WORK
PLACES
2024**

PITTSBURGH SYMPHONY ORCHESTRA

 PNC POPS

25
26

SEASON

SUBSCRIBE TODAY!

5 minutes now gives you a whole year of great music.

Visit pittsburghsymphony.org, contact your Patron Services Representative, or call the Box Office at 412-392-4900.



RODGERS & HAMMERSTEIN'S
SOUTH PACIFIC in Concert
JAN 30-FEB 1



COME SWING WITH ME
OCT 3-5



DISCO DIVAS
JUN 5-7



Douglas Rosenthal, Associate Principal Trombone



WHO'S WHO - CAST

ADAM KANTOR (*King Arthur*) is making his Pittsburgh CLO debut. He won an Emmy and a Grammy for his performance in the Tony-winning production of *The Band's Visit* on Broadway, as well as an Outer Critics Circle honor for his performance in *Darling Grenadine* at the Roundabout. He was nominated for an LA Drama Critics Circle Award for *The Inheritance* at The Geffen Playhouse. Previously, on Broadway, Adam starred in *Fiddler on the Roof*, *Next to Normal*, and *RENT* (final cast, filmed live for Sony Pictures). Off-Broadway, he starred in *The Last Five Years* at Second Stage and *Avenue Q* at New World Stages. Regional highlights include Jonathan Larson's *tick, tick...BOOM!* at Actor's Playhouse in Miami, Duncan Sheik and Kyle Jarrow's *NOIR* at the Alley in Houston, as well as Barry Levinson and Sheryl Crow's *Diner* at the Signature outside DC. On TV, he guest starred in *High Potential* on ABC as "Spencer," *Billions* on Showtime as "Pununzio," and *The Good Wife* on CBS as "Ezra." He starred in the feature film *Either Side of Midnight*, directed by Roger Spottiswoode. Adam is a graduate of Northwestern University and the British American Dramatic Academy. He is a coach for the finalists of The National High School Music Theatre Awards® ("The Jimmy Awards") since 2014, and leads master classes at theatre programs across the globe. He was a co-creator of the digital special *Saturday Night Seder* (which raised over \$4M for the CDC Foundation), produced by his interactive experiential culinary-theatre company StoryCourse. Adam has headlined concerts at Carnegie Hall as well as Princeton Symphony Orchestra, among others. @AdamJKantor on social.

KYLA STONE (*Guenevere*) Broadway: Barry Manilow's *Harmony* (swing, u/s Josephine Baker & Ruth). She made history as the first African American Anya in *Anastasia* (National Tour) and later that same year, was the U.S.'s first Black Elle Woods in *Legally Blonde* at The Muni. Regional favorites include: Inga in *Young Frankenstein* (BTG, Bay Street, Geva Theatre), Gertrude u/s Jane, Elinor in *Regency Girls* (Old Globe), Cinderella in *Into the Woods* (PCLO), Marian in *The Music Man* (with the Gainesville Orchestra), Mrs. Shelley in *The Secret Garden* (Ahmanson), and Johanna in *Sweeney Todd* (Hangar Theatre). Short Film: *A Life Within*, *The Biggest Little*. Love to Conner, mom, and her NY team! @Kylastone

BEN JACOBY (*Lancelot*) Pittsburgh CLO debut. Broadway: Barry Mann in *Beautiful: The Carole King Musical*. National Tour: Raoul in *The Phantom of the Opera*. Off-Broadway: Mark

Livingstone in Irish Rep.'s OCC-nominated *The Streets of New York*, Odysseus in York Theatre Company's World Premiere of *Penelope, or How the Odyssey Was Really Written* (Cast Album). Regional: LaJolla Playhouse, Milwaukee Rep., Ogunquit Playhouse, Sacramento Music Circus, Pioneer Theatre, La Mirada, and more. Television: *The Good Wife* (CBS), *Madame Secretary* (CBS), *When They See Us* (Netflix).

FINNEGAN COMBER (*Tom of Warwick*) is honored to perform in this dream role! Recent credits include Pittsburgh CLO's *Shirley Jones: A Gala Celebration* and the CLO Academy's *Mary Poppins Jr.* Finnegan has also performed with the Center for Theater Arts in *Zombie Prom, Jr.* (Johnny), *Seussical Jr.*, *Matilda*, and *CTA Showstoppers*. Finnegan studies voice, acting and dance at the CLO Academy and CTA. Huge thanks to the CLO, his *Camelot* family, his CLO Academy family, his parents, and a special shout out to his brother, Thomas. | **Student of CLO ACADEMY**

JOHN L. GRIMSLEY (*Merlyn, King Pellinore*) Mr. Grimsley or Grim as he likes to be called is an actor, director, designer, educator, and father. He has been working in theater from the tender age of 17 till today. Now at the age of 67 he has worked every job in the theatrical arts from sweeping the stage to running his own Theater Co. (The Dog and Pony Theater Co) in New Orleans, Louisiana. He has been involved in many different arts organizations and arts educational programs. He has toured extensively through many theaters in this country as well as internationally. Some of his favorite musical theater acting roles are Jesus in *Godspell*, Pippin in *Pippin*, El Gallo in *The Fantasticks*, Jigger in *Carousel*, Billie Flynn in *Chicago*, Alfred P. Doolittle in *My Fair Lady*, Bill Sykes in *Oliver*, and later in life as Fagin in *Oliver*. He is thrilled and honored to be working with the PCLO Family as well as his fuzzy K-9 co-star, Gus.

ALEXANDER PODOLINSKI (*Mordred, u/s King Arthur*) is honored to be a part of this strong production of *Camelot*. This will be Alex's 3rd production with Pittsburgh CLO: Ensemble in *Natasha, Pierre...*, and Young Scrooge/ Christmas Yet to Come in *A Musical Christmas Carol*. He has also played Drew in *Rock of Ages* and Rocky in *The Rocky Horror Picture Show*, both with Westmoreland Performing Arts. Alex would love to thank his parents, the Marino Family, and Kevin O'Leary for their amazing mentoring and constant support during his career.



WHO'S WHO - CAST

ANDREA WEINZIERL (*Morgan Le Fey*) played Morgan Le Fey her freshman year at Avonworth High School; how fun to revisit this character! A Pittsburgh native, prior CLO Academy student (mini star), 2010 Gene Kelly Award "Best Actress" winner, and Point Park MT alum. Pittsburgh CLO credits: *A Musical Christmas Carol* (Swing), *Anything Goes* (Erma), *The Drowsy Chaperone* (Kitty), *Grease* (Patty Simcox), *A Chorus Line* (Swing), *Seven Brides...Brothers* (Dorcas), and *42nd Street* (Ensemble). National Tour: *A Chorus Line*. Regionally: Arena Stage, Riverside Theatre, and Off-Broadway with Musicals Tonight! For my parents, who made all my dreams possible. | **CLO ACADEMY Alumni**

BRETT BARTHELEMY (*Ensemble*) is a rising sophomore at Pace University, where he is majoring in Musical Theatre and minoring in Commercial Dance. Brett is happy to be back at Pittsburgh CLO for *Camelot* and Disney's *Frozen*, where he previously performed in *Seussical* and *A Chorus Line*. Recently, Brett finished his run of *Oklahoma!* at Pace University and has worked for the American Dance Machine for the 21st Century. All glory to God and a special thank you to my parents! Insta: @brett.barthelemy | **CLO ACADEMY Alumni**

BELLA BILANDZIJA (*Ensemble, Lady Anne, Nimue Dancer*) is thrilled to be joining the company of *Camelot* as her first production with Pittsburgh CLO. This past spring, she received her BFA in musical theatre with a dance minor from Point Park, where she performed as Rita Racine in *Steel Pier*, among other productions such as *Legally Blonde* and *Sense and Sensibility*. Bella is a SoCal native and will be moving to NYC in September! Love you, Mom and Dad! @bilandzijabella

RYAN CAVANAUGH (*Ensemble, Sir Sagramore, u/s Merlyn, u/s King Pellinore*) always grateful to be a part of any Pittsburgh CLO production. This summer will mark Ryan's 12th CLO production performing in *Camelot* and Disney's *Frozen* (Oaken)! Pittsburgh CLO credits: *The Music Man* (Marcellus), *The Perfect Mate* (Homebody), *Guys & Dolls*, *Anything Goes*, *South Pacific*, *Aida*, *Shrek the Musical*, *Damn Yankees*, Disney and Cameron Mackintosh's *Mary Poppins*, and *Man of La Mancha*. Favorite Regional Theatre: Goodspeed Opera House, Asolo Repertory Theatre, and national tours. When Ryan is not on stage, he's teaching theatre at CAPA High School with the best students a teacher could ask for. Always thankful for my Mom, Dad, and Jenna for the love and support that keeps me going. | **CLO ACADEMY Alumni**

BOBBY M. DAVIS (*Ensemble, Sir Colgrevice, Assistant Dance Captain*) is so happy to be back at Pittsburgh CLO after being seen in *Anything Goes*, *Guys & Dolls*, and *The Music Man!* Select regional: Tuacahn (*Joseph...Dreamcoat*, Disney and Cameron Mackintosh's *Mary Poppins*, *Wonderland*, *White Christmas*), *The Rev* (*42nd Street*), John W. Engeman (*A Christmas Story*). National Tour: *The Elf on the Shelf: A Christmas Musical*. Marymount Manhattan College. Thanks to the best Pitt locals/cousins Kelsey and Andrew! Ig: bobbydavis | bobbymdavis.com

JORDAN T. DELEON (*Ensemble*) is a Kansas City native based in NYC. National Tour: *Peter Pan*. Regional: *Meet Me in St. Louis* (Theatre Aspen); *Cats*, *Ragtime*, Disney's *Beauty and the Beast* (Music Theatre Wichita); *Grease* (Starlight Theatre); *Chicago*, Disney's *The Little Mermaid* (The Lexington Theatre Co.); *Holiday Inn* (Arts Center of Coastal Carolina); *Bye Bye Birdie* (Music Theatre Kansas City). BFA '23, University of Oklahoma. Special thanks to Mom & Dad! @jordantdeleon

KYLIE EDWARDS (*Ensemble, Lady Sybil, Nimue Dancer*) is absolutely thrilled to be returning to Pittsburgh CLO for her 3rd summer season! She is a rising senior Musical Theatre major at Carnegie Mellon University. Previous regional credits include: (PCLO) *A Musical Christmas Carol*, *Seussical*, *Natasha, Pierre...*, *Guys & Dolls*, *Anything Goes*; (The Muny) *Dreamgirls*. Kylie would like to thank her incredible family, friends, and professors for their unwavering support! @kylie.edwards1 | **CLO ACADEMY Alumni**

MARJORIE FAILONI (*Swing, Dance Captain, Assistant to the Choreographer*) is thrilled to be back at Pittsburgh CLO! Broadway: *Escape to Margaritaville* (Dance Captain/Tammy u/s). National Tours: *9 to 5*, High School Musical. Favorites: *Escape to Margaritaville* (La Jolla), *Anything Goes* (PCLO and MUNY), *A Christmas Story* (Goodspeed/Tuacahn/Paper Mill), *Waitress* (Pioneer Theatre), *Oklahoma!* (North Shore), Disney's *The Little Mermaid* (TUTS/Dallas/LaMirada), *42nd Street* (MSMT), *Elf* (Ogunquit). BFA University of Michigan. Thanks PCLO, Mara, Mark, CTG, my family! marjoriefailoni.com

MICHAEL GREER (*Ensemble, Squire Dap, Sir Caster*) is thrilled to be back at the Benedum this summer! Favorite credits: *Puffs* (Cedric/Voldy), *Hand to God* (Timmy, City Theatre), *You Say Tomato, I Say Shut Up!* (Jeff Kahn, Denver Center & National Tour), *Shrek the Musical* (Big



WHO'S WHO - CAST

Michael Greer Bio Continued.

Bad Wolf, North Shore Music Theatre), *Altar Boyz* (Luke), *The Music Man* (Charlie Cowell), and over 30 productions with Pittsburgh CLO. Endless love to Mara and Maple Rose, the best Dad ever, and Mom, smiling down from the top Mezzanine

Laura Guley (*Ensemble, Lady Catherine*) is thrilled to be returning to Pittsburgh CLO for her 3rd season. PCLO credits: *Seussical* (Mrs. Mayor), *The Music Man*, *Anything Goes*. National Tour: *Tootsie* (Sandy U/S). Regional: *42nd Street* (Peggy Sawyer, Theatre by the Sea); *Titanic* (Kate Murphey, Marriott Theatre); *The Music Man* (U/S Marian, Marriott Theatre); *A Christmas Story* (Goodspeed Opera House); *White Christmas*, *Joseph...Dreamcoat*, *Mary Poppins*, *Wonderland* (Tuacahn Amphitheater). Immense gratitude to the entire PCLO team. Love to Katie and the crew at PMA, Mom, Dad, Jacob and Jilly. Penn State. @lauraguley

Liz Leclerc (*Ensemble, Nimue, u/s Guenevere*) is thrilled to return to Pittsburgh CLO for *Camelot* and Disney's *Frozen*! Previous PCLO credits include Hope Harcourt (*Anything Goes*) and Ursula/Nun/Ensemble (*The Sound of Music*). Liz is a recent graduate of Carnegie Mellon University (BFA MT '25) where she performed as Kate McGowan in *Titanic* (Dir. Telly Leung). Most recently, Liz sang alongside Ariana DeBose, Denée Benton, Andrew Keenan-Bolger, Sara Chase, Alysha Deslorieux, and more in the Tom Kitt & Friends concert at 54 Bellow. Liz also performed with Stephen Schwartz at the Greer Cabaret Theater.

Victoria Madden (*Ensemble*) is thrilled to be making her Pittsburgh CLO debut! NYC: *Anastasia* (Lincoln Center). National Tour: *Anastasia*. Select Regional: *Anastasia* (Fulton Theatre), *Anastasia*, Disney's *Frozen*, Disney's *Beauty and the Beast*, *Jersey Boys*, *The Count of Monte Cristo* (Tuacahn Amphitheater), *42nd Street* (Riverside Theatre), *Sunset Boulevard* (ACT of CT), *Anne Frank: My Secret Life*, *Elf* (Syracuse Stage), *The Wizard of Oz*, *Hello, Dolly!* (Maine State Music Theatre). Syracuse University: BFA in Musical Theatre. So much love to her family and William.

Maile Oravitz (*Ensemble*) is ecstatic to be a part of *Camelot* this summer! A Pittsburgh native, she is based in NYC and a recent graduate from The Institute for American Musical Theatre. Regional: *Madame Clicquot: A Revolutionary Musical* World Premiere, *West Side Story*, *A Chorus Line*, *A Broadway Musical Celebration*, *The Wizard of Oz* (PCLO).

Industry: Sara in a staged reading of *Picnic at Hanging Rock*, *The Cher Show* National Tour pre-production (IAMT). It takes a village to make dreams come true—she gives all her love to hers! Rep: Henderson Hogan Agency. www.maileoravitz.com | **CLO ACADEMY Alumni**

Latrea D. Rembert (*Swing*) is excited to be returning to Pittsburgh CLO! Previous PCLO credits include: *Once On This Island*, *Kinky Boots*, *The Wizard of Oz*, and *Spamilton: An American Parody*. Other recent credits: *A Midsummer Night's Dream* (Classical Theatre of Harlem); *Fat Ham* (TheatreSquared, City Theatre); *The Devil Is A Lie* (Quantum Theatre); *The Scottsboro Boys*, *Wig Out!*, *Choir Boy* (The REP). Company dancer with Pearlarts Movement and Sound (formally STAYCEE PEARL dance project) for 10 seasons. All thanks to God, family, friends, and my love. Jeremiah 29:11. | **Faculty of CLO ACADEMY**

Kai Sachon (*Ensemble, Sir Gwilliam, u/s Mordred*) is pumped to join Pittsburgh CLO for the 2025 Summer of Musicals! Kai was seen last year as The Grinch in PCLO's *Seussical*. In 2024, he won the Gene Kelly Award for Best Actor and went to NYC as a nominee at the National High School Musical Theatre Awards® (Jimmy Awards). Now, he's studying Musical Theatre at the University of Michigan. Go Blue!! Kai would like to thank his family, friends, and the entire cast and crew! @kai.sachon | **CLO ACADEMY Alumni**

Donovan Elliot Smith (*Ensemble, Sir Lionel*) a Pittsburgh native, sang full-time as an opera chorus tenor and soloist in Switzerland for several years with Opernhaus Zürich and Theater Basel. Recent credits include Tybalt (*Roméo et Juliette*, El Paso Opera) and Sir Hervey (*Anna Bolena*, Resonance Works). Last summer, he appeared as the farmer/ensemble in *The Music Man* with Pittsburgh CLO. Before moving to Europe, Donovan performed musical theater roles including Enjolras (*Les Misérables*, PMT) and Coalhouse Walker Jr. in *Ragtime*. He will soon join a national touring musical as a featured ensemble member and understudy. Details coming soon! donovanelliotsmith.com

Allan M. Snyder (*Ensemble, Sir Dinadan, u/s Lancelot du Lac*) returns to Pittsburgh CLO for his 5th summer after appearing in *The Music Man* and *West Side Story* last year. Broadway/Tour: *Les Misérables*, *The Phantom of the Opera* (title role). Previous PCLO credits include 10 summer shows, 6 seasons of *A Musical Christmas Carol* and *The 39 Steps* at the CLO Cabaret. Other Pittsburgh credits include



WHO'S WHO - CAST

Pittsburgh Public Theater, Lincoln Park PAC, Pittsburgh Musical Theatre and PICT. Thank you for supporting local arts organizations and local artists!

LOLA ARMFIELD (*Ensemble*) is excited to join *Camelot!* A Chartiers Valley High School (Class of 2027) student, she has trained in dance, acting, and voice throughout Pittsburgh with the CLO Academy, The Collective, Higher Voice, and Thomas Dance Studio. Favorite roles include Queen of Hearts (*Alice by Heart*), Tobias (*Sweeney Todd*), Thea (*Spring Awakening*), and Olive Hoover (*Little Miss Sunshine*). She proudly performs with the nationally ranked Chartiers Valley Dance Troupe and is a Thespian Honor Society member. Thanks to her mentors, teachers, family and friends for their endless support! | **Student of CLO ACADEMY**

CARSON BRUCE (*Ensemble, Clarius, Priest*) is a junior musical theatre major at Lincoln Park Performing Arts Charter School and is thrilled to be in his first Pittsburgh CLO production. He has been in over 30 shows at various local theaters. Some of his favorite roles include Willy Wonka in *Charlie and the Chocolate Factory*, Piggy in *Lord of the Flies*, and most recently Dmitri in *Anastasia*. He would like to extend gratitude to his family and friends for their continued support. Please enjoy the show! | **Student of CLO ACADEMY**

DUNCAN MCCRIMMON (*Page, u/s Tom of Warwick*) is a musical theater student at the Pittsburgh CLO Academy of Musical Theater. Though new to the stage, Duncan has quickly fallen in love with the art form and is excited to continue learning and growing as a performer. Recent stage credits include *Seussical Jr* (Wickersham Brother #3), the footman and chorus in *Cinderella* and a prince understudy and forest chorus member in *Into the Woods* at Colfax. He'd like to thank Miss Emily from the CLO Academy and Ms. Hazlett from Pittsburgh Colfax for encouraging and supporting him. | **Student of CLO ACADEMY**

LINNEA MCKINNEY (*Ensemble*) is excited to return to the Pittsburgh CLO after previously performing in *Seussical* (Teen Ensemble) and *Shirley Jones: A Gala Celebration* (Choir). Select regional performances include *A Chorus Line: Teen Edition* (Cassie) and *Mean Girls: High School Version* (Regina George), both with the CLO Academy; *Anastasia* (Countess Gregory, Ensemble, u/s Tsarina Alexandra), *Footloose* (Ensemble, u/s Ariel), and *The World Goes Round* (Featured Vocalist and Dancer) at Lincoln Park Performing Arts Center; and *Jesus Christ Superstar* (Mary Magdalene) at Fringe

Arts in Philadelphia. Linnea has also toured across the United States and Europe with Jon Anderson, the lead singer of the Rock & Roll Hall of Fame band Yes, as both a featured and backing vocalist and guitarist. She trains at the CLO Academy, Higher Voice Studio with Hilerie Klein-Rensi, and at the Pittsburgh Ballet House. Linnea will be attending Shenandoah University in the fall, majoring in musical theatre. Much love and immense gratitude to all who have supported her on this incredible journey. @linnea.mckinney | **Student of CLO ACADEMY**

PIPER REDFORD (*Ensemble*) is very thrilled to be making her Pittsburgh CLO debut after training at the academy for the last decade! She will be attending Baldwin Wallace University in the fall for BFA Acting with a Dance Minor and Musical Theatre Emphasis. Among many of her previous roles, her favorites have been Alice Spencer (*Alice By Heart*), Little Red (*Into The Woods*), Sparrow (*Once Upon a Human, PNWF*), Johanna (*Sweeney Todd*), Wendla (*Spring Awakening*), Monica (*Freaky Friday*), Tanya (*Punk Rock*), and Kira/Clío (*Xanadu*). She also studies acting with Daina Griffith and at the Collective with Michael Campayno, studies voice with Hilerie at Higher Voice Studio, and trains at West Point Ballet and Dance By Cami. She plans to pursue a career in musical theatre and playwriting. She thanks God and her family, especially her mom, for all they do. @piperedford | **Student of CLO ACADEMY**

HARRISYN SCHILPP (*Ensemble*) is excited to continue his summer with Pittsburgh CLO in *Camelot!* A senior at Knoch High School, Harrisyn has been an active member of the theater program under the direction of Jennifer Bronder. Most recently, he made his CLO debut in *Madame Clicquot: A Revolutionary Musical*. He was also recently honored with a Henry Mancini Best Actor nomination for his portrayal of Frank Abagnale Jr. in *Catch Me If You Can*. He trains at the Pittsburgh CLO Academy, where he takes dance, voice, and acting classes, and is part of the Pre-Professional Development Program. This fall, he will attend Coastal Carolina University to pursue a Bachelor of Fine Arts in Musical Theatre. He is incredibly grateful to his mentors, friends, family, and especially his mom and dad for always encouraging him to grow as an artist. @harrisynschilpp | **Student of CLO ACADEMY**

CARIS TOMACESKI (*Ensemble*) is thrilled to be making her Pittsburgh CLO debut! Favorite past roles include Esther Jane Albery in *A Christmas Story: The Play* (Pittsburgh Public Theater), Lavender in *Matilda* and



WHO'S WHO - CAST

Caris Tomaceski Bio Continued.

Violet Beauregarde in *Willy Wonka* (Little Lake Theatre Company). Many thanks to the faculty at Pittsburgh CLO Academy, her acting coach Daina Griffith, Carolyn Smith at Higher Voice Studio, PCLO cast and crew, and her family for their support. | **Student of CLO ACADEMY**

GUS (*Horrid*) is a standard poodle mix adopted by trainer and guardian Bill Berloni from Carolina Poodle Rescue in 2022. He has been training to play the role of "Winn Dixie" in the new musical *Because of Winn Dixie*. In 2022 he appeared in the Lifetime movie *12 Days of Christmas Eve* starring Kelsey Grammer. In 2024 He made his theatrical debut In Goodspeed Musicals' *A Christmas Story*.

WHO'S WHO - CREATIVE

MARK FLEISCHER (*Director, Executive Producer*) has served as the artistic and administrative head of the Pittsburgh CLO since June of 2020. His inaugural year brought the challenges of the shutdown of live indoor theatre, but it was during that time that Mark spearheaded the PCLO's move back to its outdoor roots with two spectacular musicals produced at Heinz Field with support from the Pittsburgh Steelers and many local donors. *The Wizard of OZ* and a star-studded *75th Anniversary Broadway Musical Celebration* brought the community together to experience the joy of musical theatre once more. He then oversaw the PCLO's return to live indoor performances in 2022. Before his appointment as Executive Producer Mark was PCLO's Producing Director (2018 – 2020) and its Associate Artistic Director (2014 – 2018). Prior to joining PCLO, Mark was the Producing Artistic Director of Adirondack Theatre Festival (2007 – 2014) and Managing Artistic Director of Plano Repertory Theatre in suburban Dallas (1993 – 2002). With a passion for both classic and new shows, he has directed readings, residencies, revivals, and world premiere productions for theaters across the country. Mark's directing credits include a wide range of shows such as the musicals *Sunday in the Park with George* (which won 7 Dallas Theatre League Awards including Best Direction of a musical), *Passion, A Chorus Line, Ordinary Days*, and *My Favorite Year*, as well as classic plays including *A Midsummer Night's Dream, The Tempest, Hedda Gabler*, and *The Diary of Anne Frank*, plus numerous world premieres. Mark is a Board Member of the National Alliance for Musical

Theatre (NAMT), chairing the organization's Member Resources Committee. He is also a member of The Broadway League where he serves on Intra-Industry and Audience Engagement committees. Locally Mark is on the Board of the Downtown Neighborhood Alliance. Mark holds a BA in English Literature and Communication Arts from Austin College and an MFA in Directing from the Theatre School at DePaul University.

MARA NEWBERY GREER (*Choreographer*) is honored to return to the CLO after choreographing *Anything Goes* and *The Music Man*. Recent directing and/or choreography credits include *The Little Mermaid, Annie, A Christmas Carol, White Christmas, Tarzan, Mary Poppins* (Tuacahn), *Newsies, Memphis* (Lexington Theatre Company), *Shrek the Musical, Oklahoma!* (North Shore Music Theatre), *9 to 5, Legally Blonde* (Broadway at Music Circus), *A Christmas Story* (Goodspeed Opera House, Seattle 5th Ave, Paper Mill Playhouse), *Matilda, Elf the Musical* (John Engeman Theatre), *Thoroughly Modern Millie, Guys & Dolls* (Music Theatre Wichita), *Little Shop of Horrors*, (Ogunquit Playhouse), and *Something Rotten!* (Cape Rep). BFA Musical Theatre University of Michigan. Proud member of SDC and AEA. Endless love to her personal knight in shining armor, Michael, and their perfect princess, Maple.

ROBERT NEUMEYER (*Music Director, Conductor*) balances duties as a music director, conductor, arranger, orchestrator and composer. At the Pittsburgh CLO, Robert has served as conductor, arranger, orchestrator and pianist for over 35 productions at the Benedum Center and Greer Cabaret Theatre. Robert is a resident teaching artist and music director at Lincoln Park Performing Arts Center in Midland PA. He is the conductor and arranger of the Gene Kelly Awards, the Henry Mancini Awards and serves as an associate music director and arranger for the Jimmy Awards at the Minskoff Theater on Broadway. Regionally, Robert has music directed and arranged for productions and special events at Carnegie Mellon, Point Park, Robert Morris and Duquesne Universities and has appeared with the national touring company of *Jersey Boys*. Robert has created arrangements and special material for Stephen Schwartz, David Yazbek, Titus Burgess, Clay Aiken, Norm Lewis, Ariel Jacobs and Jenn Colella. Robert is a proud member of the American Federation of Musicians and ASCAP.



WHO'S WHO - CREATIVE

BRYCE CUTLER (*Scenic & Video Designer*)

Previously with Pittsburgh CLO: *Once On This Island*, *Guys & Dolls*, and *The Perfect Mate*. Other designs include *Grand Horizons* on Broadway; 2020 Pulitzer Prize finalist *Soft Power* at The Public Theater; along with world premieres by John Patrick Shanley, Dael Orlandersmith, Matt Aucoin, and Grammy Award winner Steve Mackey. Other projects include Samsung's virtual reality television series *Interpretation of Dreams*; *Feel The Pride*, an AI powered audio-visual installation with St. Vincent; and a virtual reality arcade for Muse's 2019 World Tour. He is a graduate of Carnegie Mellon University. brycecutler.com

PAUL MILLER (*Lighting Designer*)

Internationally, Paul's work has been seen on stage at the Stratford Festival, London's West End, Vienna, Teatro alla Scala (Milan), South Africa, China, Manila, Iceland and São Paulo. On Broadway, he has designed 5 musicals and been the Associate/Assistant on 22 others. Notable Off-Broadway favorites include: *Desperate Measures*, *Clinton!*, *Pageant*, *Vanities - the Musical*, *Waiting for Godot*, *Nunsense*, *Encores!* (9 shows). National Tours: *Hairspray*, *Elf*, *Wizard of Oz*, *Sweeney Todd*, *The Producers*, *RENT*, *Shrek*. Regional: Arizona Theatre Company, The Old Globe, Dallas Theatre Center, Chicago Shakespeare, Idaho Shakespeare, Asolo Rep, ACT, Cleveland Playhouse, Pasadena Playhouse, Goodspeed, and others. Television: *Evil* (CBS & Paramount+), *Live from Lincoln Center*, more than 20 Netflix specials, and the internationally televised New Year's Eve Celebration from Times Square (for 25 years).

JENNIFER MOELLER (*Costume Designer*)

LCT: *McNEAL*, *Corruption*, *Camelot* (Tony, Drama Desk nominations). Broadway: *Pictures from Home*, *Clyde's* (Tony nom; DD Award), *Sweat*. Off-Broadway: *The Comeuppance* (Signature); *The Wrong Man* (MCC); *Mlima's Tale* (Lortel nom), *Tiny Beautiful Things* (The Public); *Aubergine* (Playwrights Horizons); *Love's Labor's Lost* (Shakespeare in the Park). Regional: Guthrie, Goodman, Kennedy Center, Shakespeare Theatre Company, Arena Stage, The Old Globe, McCarter, Oregon Shakespeare Festival. TV: "Dickinson" (Apple TV+).

CLAUDIA BROWNLEE (*Costume Designer*)

is a costume designer and educator from the Washington, DC, metropolitan area, passionate about projects that bridge cultural gaps and committed to exploring sustainable practices in the costume industry. Her design work reflects a deep appreciation for storytelling, history, and

collaboration, with a focus on how costume choices can enrich narrative and character development. She holds an Associate's Degree in Fashion Design from the Fashion Institute of Technology (2014), a Bachelor's Degree in Theater from the University of Maryland, College Park (2017), and an MFA in Costume Design from Carnegie Mellon University. Her career spans a range of professional roles, including stitcher and wardrobe head with WolfTrap Opera and The Washington National Opera, as well as freelance design credits with Shakespeare Festival of St. Louis, Pittsburgh Public Theater, and NU-World Contemporary Dance Company. From 2018 to 2020, she served as the Costume Shop Manager and Resident Costume Designer at the Center of Creative Arts (COCA) in St. Louis, MO, where she supported emerging artists and community productions through thoughtful, innovative design. Currently, she is the Costume Director at Pittsburgh Opera.

SARAH SPECK (*Sound Designer*) is a sound engineer, designer, and musician from Palmyra, PA. Sarah recently joined the Benedum Center as the House Sound Engineer and is excited to work with Pittsburgh CLO. Recent sound designs include *Waitress* the "Lulu" tour, and *Come From Away*, *Kinky Boots*, and *Something Rotten!*, at Rocky Mountain Repertory Theatre. Recent mix credits include *Come From Away* Gander Company, *Mrs. Doubtfire* 1st National, *Annie*, *Waitress*, *A Bronx Tale*, and John Leguizamo's *Latin History for Morons* national tours.

JEFF A. KNAGGS (*Hair and Makeup Designer*)

is a proud pug daddy and has been working in theatre for 25 years. After designing the 25th Anniversary *Mamma Mia!* tour, he has returned to Royal Caribbean to design four shows, including *The Wizard of Oz*. For The Engeman Theatre, he has designed *Beautiful*, *Beauty and the Beast*, *Jersey Boys*, *Margaritaville*, and *Clue*. For NCL he has designed *Kinky Boots*, *Footloose*, *Six*, and *After Midnight*. Royal Caribbean: *Hairspray*, *Flight: Dare to Dream*. *The Silk Road*, *Showgirl!*, *The Effectors*. Pittsburgh CLO: 2017, 2018, 2019, 2022, 2023, and 2024 Seasons. TUTS: *Memphis*, *Dreamgirls*, *Into the Woods*, *How to Succeed...*, *The Rocky Horror Show*, *Million Dollar Quartet*, *Heathers*, *Mary Poppins*, *Sweet Potato Queens*, *Bonnie & Clyde*, *A Christmas Story*, *The Music Man*. Tuacahn: *Beauty and the Beast*, and *Joseph*. Theatre Aspen: *Beautiful*. Regional: *Mamma Mia!*, *Peepshow*, *Young Frankenstein*, Disney's



WHO'S WHO - CREATIVE

Jeff A. Knaggs Bio Continued..

The Little Mermaid, Dancing With The Stars, America's Got Talent, and Into the Woods at The Hollywood Bowl.

RANDY KOVITZ (*Fight Director*) has been staging fights for over four decades, working on and off Broadway and in regional theater, film and TV. Recent credits For the CLO include *Aida*, Disney's *Newsies*, *Oklahoma!*, *Natasha, Pierre, and The Great Comet of 1812*, and *West Side Story*, four seasons at the Tony Award-winning Utah Shakespeare Festival and the films "The Ballad of the Sad Café" with Vanessa Redgrave, "The Addams Family" — as fencing double for Raul Julia — and the Pittsburgh made films "Unsinkable" and "Basic Psyche."

WILLIAM "BILL" BERLONI (*Animal Director and Trainer*) 2011 Tony® Honoree for Excellence in Theatre; 1977 and 2013 Outer Critics Awards and 2017 Drama League Award for Unique Contribution to the Theater. BROADWAY *Annie*(1977) to *Gypsy* (2025) and 31 shows in between. Animal Director for the new musical *Because of Winn Dixie*. Credits include hundreds of off-Broadway, regional, national tours, films and television. Recent film: Head trainer of the acclaimed film *The Friend*. Television highlights: *From Wags To Riches With Bill Berloni, And Just Like That* and *Only Murders In The Building*. Author of *BROADWAY TAILS 3RD Edition*. Follow him on Facebook, Twitter and www.theatricalanimals.com.

GEOFF JOSSELSO CASTING (*Casting Director*) is a New York-based casting director, handling productions for theatre, film and television. Recent work includes productions for Arena Stage, Actors Theatre of Louisville, Baltimore Center Stage, Cape Playhouse, Denver Center, Ensemble Studio Theatre, The Irish Repertory Theatre, Merrimack Rep, Oregon Shakespeare Festival, Paper Mill Playhouse, Pittsburgh CLO, Pittsburgh Public Theatre, Repertory Theatre of St. Louis, Round House Theatre, Seattle Repertory Theatre, Theaterworks Hartford, and Weston Playhouse.

ALAN JAY LERNER & FREDERICK LOEWE (*Book, Music, Lyrics*) wrote some of the American theater's most memorable musicals, including *My Fair Lady*, *Camelot*, *Brigadoon*, *Paint Your Wagon* and *Gigi*. Among their most famous songs are "Almost Like Being in Love," "I Could Have Danced All Night" and "Thank Heaven for Little Girls." Lerner was born in New York City in 1918 and attended Choate and Harvard. Loewe was born in Berlin in 1901 to Viennese parents, made his piano debut with

the Berlin Symphony Orchestra at the age of 13 and came to the United States in 1924. The two met in 1942 at the Lambs Club in New York City when Loewe approached Lerner about collaborating on a show. In 1947, they had their first Broadway hit, *Brigadoon*, followed in 1951 by a second success with *Paint Your Wagon* which included such songs as "They Call The Wind Maria," "I Talk to the Trees" and "Wand'rin' Star." In 1956, *My Fair Lady*, with Rex Harrison and Julie Andrews, opened on Broadway. Often called the "perfect musical," the show ran for 2,717 performances and the cast album sold more than five million copies. Their 1958 film musical, *Gigi*, won nine Academy awards and, in 1960, came the last great success of their partnership, *Camelot*, starring Richard Burton and Julie Andrews. In 1974, Lerner lured Loewe out of retirement to work on their last venture together: a film version of Antoine de St Exupéry's *The Little Prince*. Lerner went on to collaborate with other composers including Burton Lane, Leonard Bernstein and Andre Previn. He died in 1986 at the age of 67. Loewe died two years later at the age of 86.

RENÉE RIMLAND (*Production Stage Manager*) is excited to be back for another amazing season at Pittsburgh CLO. Broadway: *Beauty and the Beast*, *Cabaret*, *Fosse*, *Jekyll & Hyde*, *Steel Pier*. National Tours: *42nd Street*, *Beauty... Les Misérables*, *Joseph and the Technicolor Dreamcoat*, *The Phantom of the Opera*, *Savion!*, *Footnotes*, *Buddy! The Buddy Holly Story*, *Evita*, *Bye! Bye! Birdie*. Off-Broadway: *My Name is Rachel Corrie*, *Once Around the Sun*, *Menopause—The Musical*, *I Love You, You're Perfect, Now Change*, *Dinner with Friends*. Regional: Over 50 musicals at Pittsburgh CLO and North Carolina Theatre. Resident PSM for Florida Grand Opera. Proud member of Actors' Equity Association and mama of a wonderful daughter. For JRR, always.

KELLY HAYWOOD (*Assistant Stage Manager*) is excited to be a part of this new musical. Past Pittsburgh CLO productions: *Peter Pan*, *In the Heights*, *Aida*, *Mamma Mia!*, *The Color Purple*, *A Musical Christmas Carol*, *Million Dollar Quartet*, *Titanic*, *A Chorus Line*. Kelly has also done several productions with Pittsburgh Public Theater, Ballet and Opera. In her down time she also works with IATSE Local 3 and 787.

CHRISTINE A. SCHOTT (*Assistant Stage Manager*) is a Pittsburgh-based Stage Manager who has worked for many local companies including Pittsburgh Public, City Theatre, Quantum Theatre, Pittsburgh Opera, Pittsburgh



WHO'S WHO - CREATIVE

Ballet Theatre, and Pittsburgh CLO. Elsewhere she has Stage Managed for numerous dance, theatre, and opera companies and (long ago) spent some time touring with Ringling Bros. and Barnum & Bailey. Favorite shows include *Carmen*, *The Nutcracker*, *A Midsummer Night's Dream* (in all of its forms), and *Natasha, Pierre & The Great Comet of 1812*. Love, hugs, and kisses to the Brown family!

PITTSBURGH CLO (*Producing Company*) has been the driving force for 78 years behind the preservation, creation and promotion of live musical theatre since 1946. Founded in the years following WWII as a way to bring Pittsburgh together for a community experience, the company has grown to become one of the largest regional musical theatre organizations in the country. The organization's commitment to preserving, creating, and promoting live musical theatre is evident in its diverse programming, which includes beloved Broadway classics as well as the development of new works. P.CLO's dedication to nurturing emerging talent is commendable, with numerous artists (Billy Porter, Renée Elise Goldsberry, Rob Marshall, Kathleen Marshall, Shirley Jones and many more) launching their careers under its wing. The mission extends beyond the 3 show summer series with other ongoing initiatives such as the Pittsburgh CLO

Academy of Musical Theatre, the Construction Center for the Arts, the acclaimed Gene Kelly Awards for Excellence in High School Musical Theater and The National High School Music Awards® (The Jimmys). Every ticket purchased impacts our own hometown, Pittsburgh, in a variety of ways beyond the stage performance. Pittsburgh CLO has always been a proud economic generator, hiring local theatre professionals to bring the best musical theatre to life. Since 1946, loyal Patrons, Subscribers, and Donors have stood beside our organization to ensure production of Broadway caliber shows right here in our hometown. Pittsburgh CLO is excited to continue creating magical musical memories that are by Pittsburgh, for Pittsburgh and partnered with Pittsburgh all year long! For more information, please visit PITTSBURGHCLO.ORG



 **Pittsburgh's premier student-training program dedicated to celebrating talent and encouraging dreams!**

PITTSBURGHCLO.ORG/EDUCATION
412-281-2234





Discover Longwood.

Enjoy purposeful living that includes rich experiences, real connections, and remarkable surroundings. If you long for a safe, secure community where you can find belonging, build meaningful friendships, and do what you love, it's time to visit Longwood at Oakmont.

As one of the top accredited retirement communities in the greater Pittsburgh area, we provide every resident with a rich living experience that goes beyond health and wellness. Our beautiful grounds, well-equipped facilities, robust events calendar, and various resident-led committees, activities, and engagements give you endless ways to stay active. Here, every resident enjoys high-quality, personalized support and the opportunity to create a better life.

"I moved in and it was so easy!" cheers Longwood resident, Mary G. "What wonderful residents and staff! There are so many things to do, including music, social events, educational programs, and great exercise programs. I can sincerely say that I love being here at Longwood!"



Let's start the conversation!

Discover how you belong at Longwood by calling **412-826-5800** or visiting **www.LongwoodAtOakmont.com**

 **Longwood at Oakmont**[™]

A Presbyterian SeniorCare Network Community



500 Route 909 | Verona, PA 15147



Elevate Every Event

PREMIER CATERING SERVICES

If your event needs exceptional food and flawless service, it needs Common Plea Catering. From weddings and birthdays to corporate gatherings and daily lunches, we bring chef-crafted cuisine, polished execution, and 40+ years of expertise to every celebration.



We specialize In

- From daily drop-offs and corporate events to full-scale galas, weddings, birthdays and more. Our team brings culinary artistry and precision planning to every event. With decades of experience, flexible menu options, and a dedication to excellence, we're here to make your event unforgettable.
- Daily Corporate Meal Plans
- Weddings
- Holiday Parties
- Social Events
- Fundraisers & Galas
- Conference Catering

NEED CATERING SERVICES?

We bring uncommonly good food to Pittsburgh's most uncommon places.

CONTACT US TODAY!

412-281-5140
info@thecommonplea.com
www.thecommonplea.com





THANK YOU TO OUR PCLO DONORS

ACT 2 IS MADE POSSIBLE BY YOU!

Thank **YOU** for your philanthropic support of the Pittsburgh CLO's Annual Campaign and Education Campaign (through **MAY 21, 2025**).

Our family of Pittsburgh CLO donors plays a critical role in advancing our mission to celebrate live musical theater **made by Pittsburgh, for Pittsburgh, and in partnership with Pittsburgh**. From breathtaking musicals produced in our hometown to inspiring creative and youth-arts initiatives, your generosity keeps breathtaking musical theatre affordable and accessible to everyone in our community.

DONOR KEY: IMO: In Memory Of | IHO: In Honor Of | (): Number of Years

THE PITTSBURGH CLO IS GRATEFUL FOR THE GENEROUS SUPPORT PROVIDED BY THE PITTSBURGH CULTURAL TRUST

CORPORATIONS

DIAMOND CIRCLE

\$25,000 AND ABOVE

#1 Cochran (18)
Baird (30)
Dollar Bank (23)
Healthcare Realty (8)
Highmark (32)
Howard Hanna
Real Estate Services (14)
KeyBank (12)
Omni William Penn Hotel (15)
PNC (70)
RSM (1)
Specialty Conduit
& Manufacturing (14)

GOLD CIRCLE

\$10,000 - \$24,999

Alco Parking (20)
Ashley Homestore
at the Highlands (4)
Breakaway Tours (1)
Chubb Group
of Insurance Companies (14)
Deloitte, LLP (17)
Delta Air Lines (8)
Diamonds by Rothschild (11)
Federated Investors
Foundation, Inc. (16)
Giant Eagle, Inc. (20)
Koppers (14)
The Frank E. Rath - Spang
& Company Charitable Trust (45)
ReedSmith (18)
UPMC (21)
Williams Coulson Johnson Lloyd
Parker & Tedesco, LLC (1)

SILVER CIRCLE

\$5,000 - \$9,999

AON (4)
Concord Theatricals (1)
Enkompas Technology Solutions (3)
First National Bank (2)
K&L Gates, LLP (17)
KPMG (20)
MSA Safety (58)
Pittsburgh Steelers (3)
Rush Order Tees (1)
TriState Capital Bank (3)

EXECUTIVE PRODUCER'S CIRCLE

\$2,500 - \$4,999

Assured Partners of Pennsylvania
Champ Printing Company (9)
Development Dimensions
International (12)
Leech Tishman (1)
Littler Mendelson, P.C. (2)
Madame Clicquot (2)
Ninja Transfers (1)
Post & Schell (10)
Schneider Downs (23)

PRODUCER'S CIRCLE

\$1,000 - \$2,499

Ampco-Pittsburgh
Charitable Foundation (30)
Bender Leadership Academy (5)
Tudi Mechanical Systems (3)

FOUNDATIONS

The Anne L. and George H. Clapp
Charitable and Educational Trust
Bozzone Family Foundation
The Charity Randall Foundation
The Clyde E. and
Trudi L. McAuley Fund
Community Foundation
of Fayette County
Cooper-Siegel Family Foundation
Edith L. Trees Charitable Trust
The Essential Foundation
The Falk Brothers Fund
Ganassi Foundation
The Grable Foundation
The Heinz Endowments
Irene C. Shea Charitable Foundation
Helen M. Knepper Memorial Fund
of The Pittsburgh Foundation/
Community Foundation of
Westmoreland County
The Jack Buncher Foundation
Laurel Foundation
Massey Charitable Trust Founders:
Harris B. Massey and
Doris J. Massey
McKinney Charitable Foundation
Milton G. Hulme
Charitable Foundation
Mohr Family Fund
of The Pittsburgh Foundation
National Alliance for Musical Theatre
Pauline Pickens Charitable Trust
The Pittsburgh Foundation

Rackoff-Loeb Family Fund
of The Pittsburgh Foundation
Richard King Mellon Foundation
Robert and Mary Weisbrod
Foundation
The Vernon C. Neal
and Alvina B. Neal Fund
W.I. Patterson Charitable Fund

PUBLIC SUPPORT

Allegheny Regional Asset District
City Of Pittsburgh
Department of the Treasury
Pennsylvania Council on the Art

GENE KELLY PRODUCERS SOCIETY

*PCLO's Gene Kelly Producer's Society
is a community of remarkable
philanthropists who share an
extraordinary commitment to
Pittsburgh CLO.*

TITLE PRODUCERS

\$25,000 AND ABOVE

Dan Booker IMO Debby Booker (37)
Stephen and Helen Hanna
Casey (33)
Joan Clark Davis (27)
The Estate of Eleanor Dragan (17)
Dolores Kara
IMO Michael J. Kara (25)
John Keith Maitland Fund of
The Pittsburgh Foundation/
Community Foundation of
Westmoreland County (48)
Robert C. McCartney (43)
Specialty Conduit
& Manufacturing, LLC (15)
Carol H. Tillotson
IMO Anne C.
and Arthur R. Hefren (28)
The Estate of Reverend
Thomas A. Wagner (31)
Leah and Jason Wilson
and the Wilson Family (8)

LEAD PRODUCERS

\$15,000 - \$24,999

Hal and Kimberly Burch (9)
N. David and Janet M. Campbell (1)
Gus and Annie Hanna Engel (6)
Joe & Kathy Guyaux (24)
Edward T. and Suzanne F.
Karlovič (22)
Deedra Knaus (8)

THANK YOU TO OUR PCLO DONORS

ACT 2 IS MADE POSSIBLE BY YOU!



LEAD PRODUCERS CONT'D...

Bill & Sandy Lambert
IHO our daughters:
Emily & Kelly (25)
Richard and Lynn Lipovich (10)
Mark & Diane Minnaugh (21)
Mr. and Mrs. Alexander Overstrom (5)

EXECUTIVE PRODUCERS

\$10,000 - \$14,999

William P. Anderson (25)
Joe & Karen DiVito (14)
Jeff and Lesley Evancho (3)
Mr. and Mrs. Peter J. Germain (20)
Mr. Allyn J. Lynch (13)
The Malandro Family (9)
Robert and Christine Pietrandrea (11)
Glenn & Stephanie Todd (13)
James R. Wiltman (20)

PRODUCING DIRECTORS

\$5,000 - \$9,999

Dr. Vitasta Bazaz-Sheeh
Sehgal - Fund
IMO Dr. Kuldeep Sehgal of
The Pittsburgh Foundation (22)
Mrs. Patti Matty Blenko
IMO Walter Blenko (43)
George and Ada Davidson (41)
George and Daphna Gans (9)
Vicki C. Henn (9)
Michael and Evonne Henry (8)
Leslie Hyde and Lou Santora (6)
Tom & Chris Kobus (28)
Cher Kotovsky
IMO Irwin Kotovsky (4)
Dr. Diane Beynon Landers (11)
Bryson and Meg Lesniak (2)
Nicholas Liparulo
IMO Anne Liparulo (12)
Margaret A. McLean
and Stanley Yorsz (12)
Janice and Ernie Meade (12)
Tim McVay and David Bush (6)
Laurie Burkhart Mushinsky (21)
Leah and Paul Ohodnicki (16)
Luke and Allison Sizemore (11)
Arlene & Barry Sokolow
IMO Anna & Nicholas Zelkovic (22)
Justice Debra and Stephan Todd (17)
Gary and Debbie Truitt (22)
Melissa Ungar (14)
Dennis and Diane Unkovic (16)
Mr. & Mrs. William H. Van Duzer (26)
Travis and Nikki Viglione Williams (9)
Tim & Linda Zimmerman (35)

PRODUCERS

\$3,000 - \$4,999

Anonymous
Pritam and Binu Advani (7)
Tripp and Nancy Amick (8)
Stephen and Dana Bloomburg (11)
Carolyn Bouchard (2)
Dr. Kerry Bron
and Mr. Robert Levin (2)

Phyllis and Tom Davidson (3)
Joy Dawso (16)
Jane & Michael Dixon
IMO Cheryl Young (26)
Melinda and James Edwards (9)
Cathy and Randy Emanuelson (7)
Jeff and Jennifer Erdely (4)
Kim & Curt Fleming (25)
Dr. Edward L. Foley (26)
David and Deborah Freeman (13)
Gary and Michele Gatto (4)
Patricia Gray IMO Charlie Gray (35)
Mr. & Mrs. Robert A. Hartan (23)
Drs. Martha and Lawrence John (10)
Greg and Debbie Knowles (10)
Brian and Suzanne Koble (4)
Raymond & Karen Love (23)
Michael and Wanda McGarry (10)
Jamie McGovern
and Rebecca Nugent (4)
Jim and Lisa McQuade (7)
Ed and Deb Moretti (9)
Kari Murphy (2)
Scott & Jennifer Neill (22)
Jordan and Laura Nicholas (7)
The O'Loughlin Family
Charitable Fund (24)
Christina O'Toole
IMO Paul & Helen Triko (14)
Paul and Paula Palmer
IMO Charlie Gray and
IHO Van Kaplan (22)
Jean Marie Perry (12)
Bob Powell (6)
Robin Randall (5)
Barbara M. Rankin (1)
Barbara Riehle (2)
Roseann Rosnick (4)
Jim and Linda Rumbaugh (4)
George and Helen Spalaris (12)
Eric and Michele Schaffer (19)
Randi L. Starr (9)
Mark and Tammy Steele (29)
Marcia and Louis Swartz (9)
Joan L. Tissue (10)
Elizabeth Toole
IMO Mrs. Michael Kutsenkow (5)
Tom and Lynne VanHimbergen (5)
Mr. Richard J. Voller (38)
Carla J. Vrsansky, Esq. (20)
Sally Wade (38)
Matt Williams
in loving memory of
Teresa and Robert Williams (24)
Mr. & Mrs. W. Robert Wells (37)
Dr. Audrey Zelkovic
IMO Anna & Nicholas Zelkovic (13)

ASSOCIATE PRODUCERS

\$1,500 - \$2,999

Anonymous
Jen Bohland-Anhalt
& Joshua Anhalt (16)
Michele and Pat Atkins (4)
Kathryn and James Bann (10)

Meghan and Jose Barrera (11)
Elaine M. Bellin and Phyllis D. Coontz
IHO Patty Maloney (8)
Joyce Bender (10)
Anthony Benevento (2)
Paul E. Block IMO Don Arnheim
Beatrice Bonfiglio
IMO Alfred Bonfiglio (27)
W. Dennis and Penny Bossick (4)
Caleb Breckon (1)
Felicitas Caracoe (5)
James P. Cassaro (7)
Adam and Patricia Davidson (20)
Stacy and Christopher Dee (13)
Teresa and Christian Farls (2)
Elias Fedele (4)
Wynne Rooney Fedele
IMO George W. Rooney, Jr. (18)
Theresa B. Fedio (25)
Holly and Mark Fleischer (5)
Warren Fugate and Eileen Kopchik (6)
Edward and Lynn Gallagher (1)
Patrick A. Gray (7)
Mrs. Lori Giordano-Bosiljevack (4)
Richard S. Hamilton Foundation (22)
Michael and Tammy Hart (2)
MAC and George Hoover (7)
The Howe Family (4)
Christy Kobus (12)
Christy and Aaron Kolko
IMO Dr. Susan Cohen (5)
Angela and Scott Langill (3)
Fred and JoEllen Leech (10)
Brandon Marzke (3)
Mary McFadden (1)
Marcia Metelsky (3)
Marcia S. Morton (52)
Deerfield Nimicks (1)
Randall Olson (12)
William and Audia Otto (15)
John Jay Patterson
IMO Paula J. Patterson (1)
Elisa and Terry Poole (3)
Dawn Predmore
and Patrick Putorti (2)
Jana and Brett Randall (1)
Susie and Jerry Robinson (25)
Sarah and Dante Romito (1)
Ken and Toni Senatore (33)
Patrick Stefano (1)
Sterling Family Fund
of The Pittsburgh Foundation (12)
Betsy and Tom Teti
IMO Charles and Anne Lynn (27)
LaShawnda A. Thomas (4)
Steven Voudouris (1)
Bob Williams (24)
Mr. John C. Williams, Jr. (29)



THANK YOU TO OUR PCLO DONORS

ACT 2 IS MADE POSSIBLE BY YOU!

MEMBER DONORS PATRONS

\$500 - \$1,499

Anonymous
Anonymous
IHO Dan and Debby Booker (3)
Charles & Shelly Bossong
IMO Charlotte (25)
Debbie Boughner
IMO Jim Boughner (5)
Ellen Carabin (14)
Ms Nanette Catarinella
IMO Roland Catarinella (65)
Barbara Chait
IHO Van Kaplan (6)
Heather M. Chappars (14)
Mrs. Clare Donahue
IMO Thomas M. Donahue (10)
Mr. and Mrs. Richard Dougherty (9)
Merrill and Theresa Druggs (20)
Carl Dudeck, Jr. (14)
Brian and Tricia Eccher (3)
Jeffrey & Karen Fink (28)
Galatis Family (3)
Marlene Goldstein
IHO Sharon Goldstein (2)
The Estate of Charlie Gray
IHO the Pittsburgh CLO staff (35)
Rev. Dr. James R. Gretz (38)
Andrew and Darlene Hasley (3)
Richard and Ruth Ann Hess (57)
Donna and Keith Impink (1)
Kendra Whitlock Ingram
and Ben Ingram (1)
Jeff Irwin, D.D.S (37)
Mr. and Mrs. Blair Jacobson
Tom and Cathie Johnson
IMO Elizabeth J. Kindelberger (8)
Mary Kellam
IMO Robert C. Milsom (5)
Briana and Jeff Kent (3)
Arthur Kerr (42)
Diana M. Kobus (5)
The J & MA Krolikowski Fund (12)
John and Lisa Lemmex (6)
Michael Leonard (1)
Milan Markovich (2)
John & Cathy Mary (12)
Paul C. McBeth, III (4)
Jacquelin A. McCauley (11)
Dr. & Mrs. Brendan McGuire (6)
Richard and Nancy McKnight (35)
Catherine Mechling (26)
Mrs. Joan Milsom (22)
Jeff & Patty Nayhouse (23)
Mr. & Mrs. Richard L. Neish (13)
Mr. and Mrs. James O'Neill (25)
Deerfield Nimicks (5)
Todd and M'Lisa Oravitz (4)
Steven and Helen Patricia (16)
Mary Perrone
Rose M. Perryman (22)
Christopher and Mary Rawson (11)
Leslie and Peter Robinson (17)

Iva and Gene Saraceni
IMO our daughter,
Elyse Jeanne Saraceni (14)
Susan Sargent (10)
Gregg Schmidtetter
and Lisa Gavlik (2)
Bob and Lori Shelow (6)
Martin Signore (1)
Jerald and Bonnie Solut (1)
Richard Stewart (5)
The Stoffel Family
IMO Dale Stoffel (10)
Caitlin Stritmatter (1)
Reverend James R. Torquato (13)
Charles and Sue Turner (33)
Michael and Lisa Walsh (22)
Ramona Ward (4)
Mr. and Mrs. Thomas E. Wash (17)
Henry and Rosemarie Wetzel (9)
Mr. and Mrs. Robert W.
Wickerham (34)
Julie Wiles (9)
Patti and Randy Wynkoop (14)

SPONSORS

\$250 - \$499

Anonymous
Anonymous
IMO Mary Helen Fuhrer
and Frank Fuhrer
Dr. & Mrs. Lee Agostini (32)
Charles and Veronica Anchors (13)
Joann S. Anderson (14)
Pamela Andreyko (2)
Nancy Arshoun (5)
Mary and Len Bach (9)
Dr. and Mrs. Ivan Baumwell (11)
George Bielich (7)
Joan Margaret Blasinsky (13)
Michael and Carol Bleier (21)
Robert C. Blough, Jr. (7)
Pamela Bolkovac (11)
Jean-Pierre Bonasso
IMO Stephanie Krick (12)
Michelle and George Bonnar (2)
Dale and Leigh Booker (7)
Kathleen Boykin (33)
Myron and Jeanne Caplan (1)
Kathy Charochak (1)
Tom and Dale Christopher (20)
Mr. Edward E. Clever
IMO Barbara J. Clever (15)
Tom, Liz & Shannen Cloherty (4)
Michele Rone Cooper (19)
Steve Cuden
IMO Leon Zionts (5)
Bob and Judy Cunningham (1)
James and Carolyn
Cunningham (1)
Stacey Daily
IMO John Daily (3)
Alice DeCaria (2)
James and Theresa Doerfler (22)
Steven Doerfler (6)
Jeanne Drennan (3)
John Dreistadt (3)
Jacquelyn Ewalt (1)
Dr. Peggy Farrah
IMO brothers, Sonny
& Bobby Farrah (13)
Craig and Cynthia Flanagan (2)
Margaret Figgins
IMO David F. Figgins (44)
Robert and Helen Fitzgibbon (7)
Mr. Gene S. Forsythe (12)
Mr. and Mrs. Edward
Fortwangler (13)
Katherine and John Freed (14)
John and Elaine Frombach (5)
Ben and Michelle Gallagher (3)
John and Sandy Gandolfi (5)
Alvaro and Sandra
Garcia-Tunon (17)
The Clem Gigliotti Jr. Family (14)
Tom and Cathy Gothie (19)
Mr. & Mrs. Kurt Gottschalk (19)
David Gotwald & Peter Franzen (2)
Carolyn Grant (1)
Mr. and Mrs. William Greb (10)
Carol Sikov Gross
IMO Rhoda F. Sikov (5)
Robert D. Harrison (6)
Amy and Paul Hoback (9)
Mr. and Mrs. Ben Andrew Huber (4)
Russell W. Johnson
IMO Eileen B. Johnson (3)
Dr. & Mrs. Robert T. Jones, Jr. (35)
Ms. Sherdina Jones (6)
Dr. Chris & Mrs. Emily Kaufmann (5)
Mr. and Mrs. William B. Kent
IMO Peggy Paul (8)
Arthur Kerr (44)
Gary and Betty Kessler (14)
Maria Kovacs (8)
Emily Lambert (3)
Jeff and Teri Lammert (1)
Richard and Victoria Lapishka (1)
Joan E. Lavery
IMO John P. Lavery (24)
Mr. and Mrs. Shawn Leifheit (13)
Mr. and Mrs. Craig C. Linner (2)
David M. and Joyce E. Lipkin (9)
Margery J. Loevner (4)
Jennifer Long (4)
Mary MacPhail
Mr. & Mrs. Robert Madar (21)
Kay Manecke (10)
Richard Marciniak (18)
Dr. and Mrs. James McCann (13)
Mr. and Mrs. Samuel McClure (12)
Dr. Graham and
Elizabeth McIntosh (7)
Dr. Amy Mehta (1)
Mary Ann and Terry Mohr (12)
Carroll and David Morrison (11)
Ms. Bonita Mullaugh (12)
The Murray Family (9)
Tim and Carol Murray (8)
David & June Nimick (27)
Thomas M. Pakula (2)
Chris and Diana Patella (1)



THANK YOU TO OUR PCLO DONORS

ACT 2 IS MADE POSSIBLE BY YOU!

SPONSORS CONT'D...

David B. Patrick (1)
Ms. Lynley Pavkovich (5)
Warren and Sharlene Purring (11)
Dave and Meg Rauth (3)
Edward and Anna Marie Rice (19)
Mona and Bob Riordan (28)
John and Joni Roland (14)
Kristen Rohr (2)
Caryn Rubinoff
 and Craig Dunham (1)
Don & Mary Rugh (24)
Mrs. John M. Sadler (11)
Paul Schamer (10)
Mary Seghi (25)
Cecilia Shepard IMO Robert Greer
Ronald and Linda Siegel (3)
Josh and Patricia Sivitz (2)
Ann K. Shaner (5)
Ira and Lucy Snyder
 IHO Allan Snyder (7)
Susanne and Ron Sommer (12)
Mr. & Mrs. Marlis Stacy (9)
Mr. and Mrs. David R. Steinberg (24)
Jody Stockkill (2)
Cait and Spencer Sturgeon (3)
Robert and Vonnice Teagarden (5)
Gayle Tissue
 and Yiannis Kaloyeropoulos (2)
Stephanie Veenis (2)
Nancy and Will Willems (12)
Al and Peg Williams (3)
Janice Wirth (15)
Gary and Diane Workman (7)
Tom Wyse, Jr. and Robert A. Neft (27)

LIMELIGHTERS

\$100 - \$249

Anonymous
Anonymous
 IMO Agatha
Anonymous
 IMO Richard S. Mowl Jr.
A. L. Abramovitz (9)
Kathryn Adams
 IMO Forbes Adams (2)
John Aiello (7)
Kelly J. Albenze (1)
Dorcas Alexander
 IHO Robert Alexander (1)
Ted and Donna Alexovich (7)
Elizabeth R. Amber
 IMO Wayne Amber
 & James Emswiler, CAS (11)
Mr. and Mrs. Anderson (1)
Sam Angelucci and
 Catherine Blandi (1)
Sandy Artzberger (4)
George W. Ayres
 IMO Joyce Davis Smith (6)
Debra Baldesberger (9)
Leroy and Ginger Ball (4)
Colleen Balsano (1)
Laura Barry
 IHO The Awesome CLO Staff (10)
Dave and Trish Bartlett (1)

Mr. Gerald Bartolomucci (5)
Diane Berquist
 IMO Michael J. Berquist, Esq. (5)
Kirk F Betteridge (1)
Jody Bishop (1)
Mr. David Blackmore (20)
Paul E. Block (23)
Michael Blow (1)
Cesare and Anita Shaw Brogneri
 IMO Our Parents (1)
Jim Bobenage (1)
Sharon Bono (1)
Fran and Harvey Borovetz (1)
Michael and Maxine Botti
 IHO Mike Botti (7)
Dorothy L Boyer (1)
Scott Branvold and
 Lynda Davidson (12)
David and Karen Brienza (6)
Elizabeth Brokaw (1)
Emily Brooks (1)
The Brown Family (4)
Mary Ann Brown (2)
Mary Patricia Brown (16)
Mr. and Mrs. Steve Brown (3)
Mr. and Mrs. Edward E. Brunins (9)
Mr. Russ Carley (1)
Dan and Doreen Casey (9)
Helen Cestra (1)
Chris Chaney (1)
Vanessa Chapman (2)
Frank and Theresa Cicci (3)
Gary and Jo Ann Claus (31)
Nat and Diane Cohen
 IHO Jim Mercer (19)
Erin Cook (1)
Ruth and Carl Crowe (2)
Fred and Joy Cullen (10)
Catherine M. Daily
 IMO Hazel P. Daily (29)
George and Kathleen Daniels (7)
Steve Daquilanto (2)
Michael Davidow (1)
Dr. and Mrs. Tim DeBiasse (12)
Laura DeDi (1)
Michele DeGrazia (1)
Diane Deluca (2)
Peter and Melba Dibble (4)
Nick and Michele Ditullio (8)
Beth Ann Docherty
 IMO Janet M. Docherty (11)
Mr. Paul S. Drost (22)
Scott J. Donaldson
 & Michael Hunter (12)
Mr. and Mrs. Patrick Dunphy (27)
Mary Jane Edwards (9)
Timothy Eicher (1)
Gerald and Dawn Ellson (4)
Jenna Marie Enright Taylor (1)
Mike & Margie Evans (9)
Frank and Lisa Falcione (3)
Debby Fannin (1)
Mark and Carolyn Farabaugh (11)
George Farah (1)
Mr. Frederick Faraone (1)

Jacqueline Fennell (3)
Bob and Amy Ference
 IMO Marie Ference (4)
Armand Ferrara (4)
Emily Ferri
 IMO Edward and Carole Ferri (9)
Cheryl Ferri (2)
Kristian Feterik (3)
Mr. and Mrs. Robert Fiedler (12)
Tom and Sue Finegan (7)
Sarah Finney (3)
Jim and Paula Fiorucci
 IMO Carol Fiorucci (17)
Bruce Fisher (1)
5 Js (16)
Peggy Forquer
 IMO Betty Forquer (1)
Suzanne Fountain (1)
Mr. & Mrs. Paul K. Fox (31)
Kenneth T. Frankenbery (11)
John and Susan Frantz (2)
H. Ronald & Cynthia Fray (12)
Friedlander Family (12)
Linda Froehlich
 IMO Richard D. Froehlich (4)
Michael D. Gaber (2)
Thomas Garnett (1)
Shirley Gaudette (2)
Bernard T. Geiser (1)
Damian and Hayah George (10)
Linda J. Haynes, MD (11)
Mr. and Mrs. William D. Ghrst III (21)
Rachel Gilman & Tina Cutone
 IHO Abigail Gilman (4)
Angella Goetz (10)
Lisa Ann Goldsmith (1)
Stephen Graf (6)
Cyndy Graves (11)
Joann and Anthony Grieco (18)
Eddie Grimes
 IMO Greg Triko (8)
Marjorie C. Gross (3)
Mark M. Gudalis (5)
Brandon Guzy (1)
Mr. Robert Haddox (1)
Dave and Beth Haines (1)
Denise Hampson (4)
Mr. and Mrs. Thomas R. Harley (4)
Niki Harris and Zane Weiner (8)
Donna Hazel (3)
Ms. Paula Heil (6)
Michael and Diane Hillebrand (1)
Janice L. Hixson (7)
Lois M. Hoffman
 IMO Mr. and Mrs. Edward
 Hoffman (21)
Iris Holleran (1)
Daniel and Vicki Holthaus (11)
Melissa Hook (8)
Larry and Denise Hoover (14)
Mr. Bruce Hostler (15)
Millie Hutchison (2)
Michael Iannone (1)
Diane Johnson (10)
Dr. and Mrs. Ralph E. Jones (6)



THANK YOU TO OUR PCLO DONORS

ACT 2 IS MADE POSSIBLE BY YOU!

Ron and Eileen Jones (1)
William Jones (1)
Elaine Kaczmarek
IMO Dorothy Procupp
and Joanne Readshaw (21)
Jim and Cheryl Kassner (4)
Kelly and Walter Keller (2)
Patsy & PK Kennedy (4)
Roy and Lori Kern (4)
Russell Kern (1)
Mr. and Mrs. Kevin Killinger (6)
James and Nita Kincaid (1)
MaryAnn & Bill King (25)
Debra and Jack King (14)
James R. Kirsch
IMO Audrey K. Kirsch (14)
Mr. Dennis Knapp (1)
Diane Knechtel (21)
Bruce Knepper (1)
Dr. Stephanie Kobil (28)
Lou M. Kramer, Jr.
IMO Louis Kramer, Sr. (11)
Shawn and Judith Kramer (6)
Mac and Eileen Kravitz (17)
The Kubany Family (1)
Margaret and Dan Lackey (6)
Joan Lacomis (4)
Nancyann Letterio (6)
Neil and Sharon LeJeune (11)
Darren and Linda Leonard (16)
Dirk M. Lesnett (2)
Leslie and Rich Levine (5)
Jonathan Levinson (1)
Jeff and Rachel Lizik (8)
Kate Loy (4)
Jeff and Dr. Jae Luck (4)
Ronald and Christine Lunardi (24)
Robert Luttner (2)
Carole Malik (3)
Mr. & Mrs. Gregory D. Maloney (30)
Janet K. Manuel (17)
Rudy & Rose Marshalek (1)
Jim and Maribeth Masquelier (1)
David Maxwell (36)
Larry and Michaelene McCahan (32)
Mrs. Neva McClymonds
IMO John McClymonds (9)
Amanda McCoy (1)
Mark and Patricia McGinley (7)
Paul and Melissa McLane (6)
Mr. and Mrs. Daniel Meier
and Family (7)
Christine Matelan (1)
Bob and Chris Meyer (9)
Robert and Lynn Mialki (7)
Joseph and Gina Milcoff (5)
Robert and Amber Miles (6)
Justin J. Mohney (3)
Dr. and Mrs. James D. Moore (15)
Jeff and Crystal Moore (1)
Lee Morehouse (4)
Jim and Deborah Muders
IMO Tony Wieckowski (17)
Wendy Murdock (1)
Jennifer Murr (1)

Richard Narvin
IHO My Bunny (3)
William Naylor
IMO Mary D. Naylor (2)
Marisa Nero (1)
William Noel (3)
Dan and Lisa Nydick (17)
Alice Oakes (5)
Michael J. O'Brien (3)
James Ohr (2)
Pascal Family (1)
Jo-Ann Paulenda (7)
Kathy & John Pechunka (15)
Richard and Deborah Peltier (1)
Vincent Petrocelli
IMO Carole L. Petrocelli (18)
Mark F. Piedmonte (5)
Mr. and Mrs. Stephen F.
Piskurich (26)
Mr. & Mrs. Donald J. Platt (27)
Cindy & John Pokora
IMO Lil Sciuilli (12)
Kathy Jo Pollack (20)
Kenneth Powell (1)
Barry B. Premoshis (23)
Barbara Provenzano (20)
Jim and Maura Puchany (4)
Quality Repair Services, LLC (10)
Sue Quinn (4)
Pamela Rakosky (1)
Joshua and Brielle Reicks (5)
Edward M. Reppa, Jr. (17)
Mr. & Mrs. Frank Ricco Jr. (13)
Melinda Rietzel (2)
David and Sylvie Rigdon (7)
Denise & Rusty Roach (2)
Gary and Cookie Roberson (2)
Marcy Robertson (2)
Dante Romito (1)
Al Rose
IMO Diane Rose (17)
Rosella Rosener (14)
Wendy Ruch (1)
Sally and Edmund Ruffin (1)
Kathy Ruffing (1)
Ms. Kathleen Sacco
& Mr. Andrew Greiner (2)
Frank and Denise Salopek (8)
Lisa Scales (2)
Dianne Scansaroli (9)
Mark Scappe (6)
Mr. Jim Schepis (1)
Mr. and Mrs. Daniel C. Schetley (11)
John C. Schlotterer (8)
Edward R. Schneider (4)
Carl W. Schultz (6)
Emily Busse Schwartz
IMO John and Maggie Busse (2)
Jim and Sheree Sciarretta (5)
Victoria and David Serafini (19)
Brian Sergi-Curzman (2)
Steve and Linda Sesack (2)
Madalaine T. Shigle
IMO Therese "Grammy"
Sciuilli (5)

Vincent J. Siciliano
IMO John A. Siciliano (39)
Teresa Sirianni (1)
Jacob and Rula Skezas (10)
Walter and Gayle Sklarsky
IMO Clara Sklarsky
and Sandra Cessna (16)
Bob and Chris Sloboda (8)
Joseph and Lynn Smith (10)
Ruth Snyder (2)
Tom and Karen Sochacki (2)
Lyn Sokol (1)
Steve Sokol (1)
Susan Sorbo (12)
Jocelyn Steele (2)
Carol M. Stein (18)
Mr. & Mrs. Gregory A. Stein (35)
Joe Stevens (9)
Jenny and Kelly Stewart (7)
Troy and Julie Stiffler (2)
Debra Stiger (6)
Mr. and Mrs. George S. Stipetich (3)
Mr. J. Stofcik (1)
Dennis and Ronald Stombaugh (6)
Christine and Ronald Stout (1)
Wade and Barbara Stull (6)
Jayelyn Swink (3)
Janet L. TEMPLER
IMO Carol R. McAuley (24)
Taylor Toth (1)
Charles F. Traeger
& Rita Powroznik-Traeger (9)
Nancy and Gary Tuckfelt
IMO Jay and Renee Minsky (6)
Catherine Turner (25)
Penny Tzortzis (3)
Keith and Carol Unitas (3)
James and Dorothy Valimont (12)
Jane A. Vaselenak (4)
Matt and Dr. Anne Veres (5)
Kathleen M. and Emil P. Varnise (1)
Marilyn and Joseph Vettorazzi (9)
Janet Wagner (1)
William and Susan Wagner (1)
Dan and Lee Ann Wahl (4)
Jason Waltz (1)
Justin Weissert (1)
Jane Werner and Bob Rutkowski (1)
Karen and Fred Wheeler Jr. (3)
Michael and Shelby Wherry (6)
Dick and Margaret White (17)
Peggy C. Whitehurst (8)
Mr. David E. Winklmann (8)
Brandon Wolfe (1)
Carol Worstell
IMO Mildred Worstell (2)
Linda Wright (16)
Lawrence Yagoda (1)
Sam Yates (1)
Joseph Yuhasz (4)
Susan J. Zuk (8)
Dr. Paulina F. Zunino (5)
Susan Stanish Zurawsky (4)
Ms. Linda Zyroll (1)

THANK YOU TO OUR PCLO DONORS

ACT 2 IS MADE POSSIBLE BY YOU!



PITTSBURGH CLO WOULD LIKE TO THANK AND RECOGNIZE THE FOLLOWING MEMBERS OF THE LEGACY LEGENDS SOCIETY:

Paul Block
Jim Gretz
Robert C. McCartney
Paul and Paula Palmer
Jeffrey Lawrence Pollock, Esq.
Sally Wade
Reverend Thomas A. Wagner

Pittsburgh CLO thanks the Ambassadors and Wine Tasting & Silent Auction Donors for their generous support of the CLO Performance Season and CLO's Arts, Education, and Community Engagement Initiatives.

To update your preferred donor listing, please contact the CLO Development Office at 412-281-3973, ext. 4.

For more information on the Legacy Legends Planning Giving Program, please visit our website at PittsburghCLO.org



LEGACY LEGENDS

CLO LEGACY LEGENDS recognizes the dedicated supporters who share a vision for Pittsburgh CLO's future. Their bequests and other planned gifts will have a profound and lasting impact on the artistic quality of the work you see on our stages.

If you would like to join us in building that future, please consider becoming a **CLO LEGACY LEGEND** by naming Pittsburgh CLO as a beneficiary of your will or trust, IRA or other retirement plan, life insurance policy, life income, or other planned gift. Designating Pittsburgh CLO is not a complicated process and can often be done with a phone call to your investment adviser.

If you have already named CLO in your estate plans – let us know and we will add your name to our CLO LEGACY LEGENDS and include you in special recognition and benefits. **For more information, please contact Wynne Fedele, Director of Development at wfedele@pittsburghCLO.org or call 412-281-3973 x232.**



YOUR LEADING ROLE AWAITS!

*Did you know that a ticket only covers half
of the expenses of a PCLO production?*

**Join our vibrant donor community and help us keep
the curtain rising!**

- **\$100 GIFT** – Gain priority access to readings of new musicals and recognition in PCLO show playbills.
- **\$250 GIFT** – Go behind-the-scenes with an invitation for two to attend a reception and dress rehearsal of a PCLO show and enjoy two drink vouchers for the Benedum Center bars.
- **\$1,500 GIFT** (and above) – We cordially invite you to join our fabulous **Gene Kelly Producer's Society**, gaining access to thrilling opportunities to meet, mingle, and dine with stars and befriend fellow musical theater lovers! Furthermore, enjoy premier benefits such as year-round access to PCLO's concierge department for all your ticket exchanges and purchases; free reserved parking during PCLO shows; complimentary tickets; and more.

*Charles Shaughnessy, star of PETER PAN
and A MUSICAL CHRISTMAS CAROL,
with donors at Supper with the Stars*



Donors at Dress Rehearsal Reception

**FOR MORE INFORMATION ABOUT DONOR BENEFITS AND
WAYS TO GIVE, VISIT PITTSBURGHCLLO.ORG OR CALL OUR
DEVELOPMENT OFFICE AT 412-281-3973 EXT. 4**



JOIN OUR DONOR FAMILY TODAY!

The tax deductible amount of your contribution is limited by the excess of your contribution over the value of certain benefits provided by CLO. For more information, visit pittsburghCLO.org. A copy of the official registration and financial information may be obtained from the Pennsylvania Department of State by calling toll free, within Pennsylvania, 1-800-732-0999. Registration does not imply endorsement.



SPECIAL THANKS

The Pittsburgh CLO Gallery of Heroes in-school program is sponsored by Highmark Blue Cross Blue Shield, The Massey Charitable Trust, The Pittsburgh Foundation, Peoples Natural Gas, The City of Pittsburgh, Heinz Endowments, PNC, Healthcare Realty, Cooper-Siegel Family Foundation, and Laurel Foundation.

The Gene Kelly Awards are sponsored by The Michael J. Kara Family, Deloitte, the Gismondi Family Foundation, Highmark Blue Cross Blue Shield, PNC, and the CLO Ambassadors.

The Charles Gray Award for Special Achievement in Arts Education is underwritten by the Roy A. Hunt Foundation.

The CLO New Horizons is made possible in part by Highmark Blue Cross Blue Shield, The Pittsburgh Foundation, Bellin/Coontz Family Giving Fund, Bender Consulting Services, Cooper-Siegel Family Foundation, and the Edith L. Trees Charitable Trust, People Natural Gas, PNC.

Stars of Pittsburgh CLO's Summer Series dine at the Grand Concourse Restaurant at Station Square.

The Official Hotel of Pittsburgh CLO.



The Official Airline of Pittsburgh CLO.



The Official Car Provider of Pittsburgh CLO.



EQT New Musicals Commissioning Fund

The purpose of the EQT New Musicals Commissioning Fund is to identify and commission writers both in Pittsburgh and across the country to write new musicals for the Pittsburgh CLO Summer Season, Cabaret and Gallery of Heroes program.

NOW THROUGH AUGUST 31ST!



SUMMER

STAYCATION

FREE ADMISSION

WITH ALLEGHENY COUNTY LIBRARY CARD & RESERVATION

RADPASS.ORG

SEE OFFERS FROM SOME OF PITTSBURGH'S FAVORITE ATTRACTIONS AND BOOK YOUR STAYCATION PASS WITH THIS QR CODE:





“I know I want to avoid a nursing home. What other choices do I have?”

An Envisage membership makes it possible to age independently and successfully in the place you call home — today and tomorrow.

Learn more about the smart way to age at home.

www.Envisage.org
412.826.6110

▶
SCAN
WITH
YOUR
PHONE



envisage
The smart way to age at home.

From Your Leaders in Aging Services

Presbyterian
SeniorCare
NETWORK

Lutheran
SeniorLife

It's a **SUMMER** Full of Fun!

**2025 PITTSBURGH CLO
SUMMER CAMPS**

DOWNTOWN LOCATION

PRIVATE LESSONS
for Voice, Piano, Dance, or Acting
June 9 – Aug 1
By appointment only

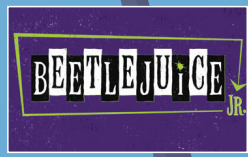
**TRIPLE-THREAT
BOOT CAMPS**
June 10 – 12 **Aug 5 – 7**
Ages 10 – 13 and Ages 10 – 13 and
Ages 14 – 18 Ages 14 – 18



June 16 - 20 July 21 - 25*
Ages 8 – 18



June 16 - 27*
Ages 6 – 10
Aftercare Available



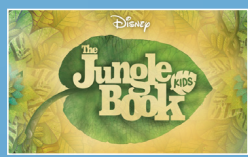
June 30 - July 11*
Ages 13 – 18
No camp July 4th



July 7 - 18*
Ages 8 - 11 & 12 - 15
Aftercare Available



July 21 - August 1*
Ages 8 - 11 & 12 - 15



July 28 - August 8*
Ages 7 - 11
Aftercare Available



July 1 - 3
Ages 3 & 4



July 1 - 3
Ages 5 & 6

SOUTH PARK LOCATION



June 16 - 26*
Ages 8 - 13

**REGISTER
TODAY!**



Your best self is just ahead.

And nothing should hold you back from getting there. Highmark Blue Cross Blue Shield has added **over 6,000 virtual and in-person therapists** so that everyone can get the right care, right away.

Get started at [BecauseLife.com](https://www.BecauseLife.com).



Because Life.™



Access to in-person therapists where available.

Benefits and/or benefit administration may be provided by or through the following entities, which are independent licensees of the Blue Cross Blue Shield Association: Highmark Inc. d/b/a Highmark Blue Cross Blue Shield, Highmark Choice Company, Highmark Health Insurance Company, Highmark Coverage Advantage Inc., Highmark Benefits Group Inc., First Priority Health, First Priority Life or Highmark Senior Health Company. Your plan may not cover all your health care expenses. Read your plan materials carefully to determine which health care services are covered. For more information, call the number on the back of your member ID card or, if not a member, call 866-459-4418. 04/25 MX4862656

PITTSBURGH CULTURAL TRUST

PNC 2025-2026
BROADWAY  PITTSBURGH™

PRESENTS



September 9-14, 2025



November 4-9, 2025



December 30-January 4, 2026



January 14-February 15, 2026



February 24-March 1, 2026



March 31-April 5, 2026



April 14-19, 2026



May 26-31, 2026

SEASON OPTION



October 7-12, 2025

SEASON OPTION



November 25-30, 2025

SEASON OPTION



March 10-15, 2026

Benedum Center • Season Tickets 412-456-1390 • Groups 10+ Tickets 412-471-6930

TRUSTARTS.ORG/BROADWAY





LERNER & LOEWE'S
CAMELOT



**YOUR QUEST FOR THE PERFECT SOUVENIR ENDS HERE,
RELIEVE THE MAGIC OF CAMELOT - NOW IN THE LOBBY!**

Chocolate Boutique

Gourmet Chocolates & Novelty Candy

Chocolate Boutique is a proud
Sponsor of Pittsburgh CLO's 2025

PNC Summer of Musicals!



VISIT US AT ONE OF OUR MANY LOCATIONS!

Robinson Mall • South Hills Village Mall
Eastwood Mall • Sewickley, PA Store Front

NOW THROUGH SEPTEMBER 1

ICE AGE

FROZEN IN TIME



PITTSBURGH ZOO
& AQUARIUM



SUBSCRIBE TODAY
TO MCG JAZZ'S

2025/26 **SEASON 39**
FRIENDS & FAMILY WITH...



Kurt Elling and
the Pittsburgh Jazz Orchestra



Béla Fleck,
Edmar Castañeda,
& Antonio Sánchez



Endea Owens and Michael Mayo
A double bill of two immensely
talented rising stars of jazz!

2025/26
Artist-In-Residence,
Tamara Tunie

...AND MANY MORE

PLUS
choose-your-own-concert
packages and
subscriber benefits



Manchester Craftsmen's Guild
1815 Metropolitan Street
Pittsburgh, PA 15233



ON SALE NOW!

mcgjazz.org

412.322.0800

< IT'S ALL
HAPPENING HERE!



The Director and Choreographer are members of the Stage Directors and Choreographers Society, a national theatrical labor union.



United Scenic Artists represents the designers and scenic painters for the American Theatre.



Backstage and Front of the House Employees are represented by the International Alliance of Theatrical Stage Employees (or I.A.T.S.E.).



The actors and stage managers employed in this production are members of Actors' Equity Association, the union of professional actors and stage managers in the United States.

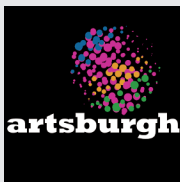


The Musicians, Conductors, Music Preparation Personnel and Librarians employed in this production are members of the American Federation of Musicians of the United States and Canada.

Pittsburgh CLO receives state arts funding support through a grant from the Pennsylvania Council on the Arts, a state agency funded by the Commonwealth of Pennsylvania and the National Endowment for the Arts, a federal agency.



The Allegheny Regional Asset District, a county agency created to support and finance regional assets, including libraries, parks, cultural groups, sports and civic facilities, and to distribute tax relief to the 128 municipalities of Allegheny County.



Pittsburgh CLO AMBASSADORS



BECOME A PITTSBURGH CLO AMBASSADOR TODAY!

The mission of the Pittsburgh CLO Ambassadors is to support and broaden the reach and diversity of the Pittsburgh CLO and to make musical theatre an active and accessible part of the lives of its members and others through the organization of and participation in a combination of theatrical, social, fundraising, volunteer, and educational events.



pittsburghCLO.org/Ambassadors



PITTSBURGH CLO STAFF

Mark Fleischer, *Executive Producer*

SALES & MARKETING

Sharon Goldstein.....*Director of Sales and Marketing*
 Sidney Franczak.....*Marketing Manager*
 Kyle J. Malinosky.....*Marketing Coordinator*
 Alexa Yanyanin.....*Ticketing and Communications Manager*

Special thanks to the Pittsburgh Cultural Trust Ticketing, Group Sales, and Patron Services teams for their invaluable support and collaboration.

DEVELOPMENT

Wynne Fedele.....*Director of Development*
 Molly Campe.....*Manager of Special Events and Projects*
 Brandon Marzke.....*Manager of Individual Giving*
 Tom McGee.....*Corporate and Foundation Relations Manager*
 Dayna Sowers.....*Board Liaison/Development Coordinator*
 Levi Von Iderstein.....*Development Data Coordinator*
 Sia Zhang.....*Development Associate*

FINANCE & ADMINISTRATION

Angela Langill.....*Director of Finance and Administration*
 Michael J. Cerchiaro.....*General Manager*
 Shelby Hinkle.....*Human Resources Consultant*
 Kuei-O Lin.....*Accountant*
 Mackenzie Shimko.....*Accounting & HR Coordinator*
 Angie Staats.....*Seasonal Company Manager*
 Tom Stumme.....*Executive Assistant*
 Amanda Wilcox.....*Controller*

EDUCATION

Jim Scriven.....*Director of Education*
 Patty Maloney.....*Academy Principal*
 Brady D. Patsy.....*Community Engagement Manager*
 Aidan Quartana.....*Education Associate*
 Alexander Righetti.....*Education Operations Coordinator*

PRODUCTION/CONSTRUCTION CENTER

Billy Mason.....*Associate Producer*
 Macarena Subiabre.....*Production Manager*
 Anna Hanson.....*Producing Assistant*
 David Hartley.....*Technical Director*
 Michele Sullivan.....*Construction Center Business Manager*
 BJ Lipari.....*Scenic Charge*
 Brendan Smith.....*Foreman*
 Matthew Abate.....*Welder*
 Michael Bannias.....*Journeyman, Key Carpenter*
 Fredrich Drenkow.....*Key Carpenter*
 Ryan Geraghty.....*Key Carpenter*
 Peter Hartley.....*Electrician*
 Anna-Lena Kempen.....*Scenic Painter*
 Robert Pell.....*Journeyman*
 Randy Schanz.....*Journeyman*

CAMELOT PRODUCTION

William Berloni.....*Animal Director, Animal Trainer*
 Dylan Blussick.....*Wardrobe Supervisor*
 Catie Brown.....*Music Supervisor, Rehearsal Pianist, Associate Music Director*
 Jim Burns.....*Rehearsal Pianist*
 Claudia Brownlee.....*Additional Costumes Designed By, Costume Coordinator*

Kaitlyn Clougherty.....*Youth Performer Supervisor*
 Tomé Cousin.....*Intimacy Coordinator*
 Bryce Cutler.....*Scenic & Video Designer*
 Bobby M. Davis*.....*Assistant Dance Captain*
 Marjorie Failoni*.....*Assistant to the Choreographer, Dance Captain*

Mark Fleischer.....*Director*
 Lisa Ann Goldsmith.....*Dialect Coach*
 Räyya Gracy.....*Assistant Costume Coordinator*
 Mara Newbery Greer.....*Choreographer*
 John L. Girmsley.....*Animals Handled By*
 Kelly Haywood*.....*Assistant Stage Manager*
 RJ Heid.....*Rehearsal Drummer*
 Kevin Hogan.....*Assistant Head Electrician*
 George Hoydich.....*Music Supervisor, Music Coordinator*
 Geoff Josselson.....*Casting Director*
 Dan Kendgia.....*Head Electrician*
 Travis Klingler.....*Hair and Makeup Supervisor*
 Jeff A. Knaggs.....*Hair and Makeup Designer*
 Randy Kovitz.....*Fight Director*
 Andrew Kutrufis.....*Head Carpenter*
 Alan Jay Lerner.....*Book, Lyrics*
 Frederick Loewe.....*Music*
 Natalie Rose Mabry.....*Video Programmer*
 Paul Miller.....*Lighting Designer*
 Jennifer Moeller.....*Original Costumes Designed By*
 Angie Monahan.....*Stage Management Production Assistant*
 Robert Neumeyer.....*Music Director, Conductor, Music Supervisor, Music Arranger*
 J. Alex Noble.....*Assistant to the Fight Director*
 Caroline Nowak.....*Hemley Lighting Assistant*
 Taylor Oberle.....*Head Props, Props Coordinator*
 Renée Rimland*.....*Production Stage Manager*
 Ceili Schiller.....*Stage Management Production Assistant*
 Christine Schott*.....*Assistant Stage Manager*
 Brendan Smith.....*Shop Foreman*
 Evan Shoaf.....*Assistant Head Carpenter*
 Sarah Speck.....*Sound Designer*
 Jacob Zedek.....*Associate Lighting Designer*

PITTSBURGH CLO 2025 SUMMER INTERNS

Elizabeth Amen.....*Producing*
 Skyler Bruno.....*Education*
 Kylie Capsambelis.....*Company Management*
 Stella Frazer.....*Graphic Design*
 Danielle Guthrie.....*Sales & Marketing*
 Elana Kaplan.....*Production Management*
 Katerina Larrick.....*Education*
 Rachel Laurence.....*Sound Design*
 Kaitlyn Majewski.....*Education*
 Rachel Olson.....*Props*
 Grace Schmader.....*Education*
 Julia Shavel.....*Merchandise & Lobby*
 Trey Tillotson.....*Development*
 Jackson Underwood.....*Costume Design*
 Emily Wickham.....*Theater Management*

*Members of Actors' Equity Association, the union of professional actors and stage managers in the United States.

American Airlines 

Breeze 



**Daily, nonstop flights from the
Steel City to Tinseltown**

Explore the endless entertainment options of Los Angeles
with a nonstop flight from PIT.

Learn more at flypittsburgh.com/booknow

