



Pittsburgh
CLO

MEL BROOKS'

YOUNG FRANKENSTEIN



#PCLOYoungFrankenstein | @PittsburghCLO

A Wickedly Fun HOLIDAY TRADITION

MATTHEW LOMBARDO'S

WHO'S HOLIDAY!

NOV 29-
DEC 22
GREER CABARET
THEATER

STARRING
LARA HAYHURST
as CINDY LOU WHO



CONTAINS
ADULT
CONTENT

A Musical CHRISTMAS CAROL

HOLIDAY FAMILY
TRADITION FOR OVER
30 YEARS

DEC 13-22
BYHAM THEATER

STARRING
CHARLES SHAUGHNESSY
(THE NANNY, DAYS OF OUR LIVES)
as SCROOGE



PITTSBURGH CLO BOARD OF DIRECTORS



OFFICERS



Alexander Overstrom
CHAIRMAN OF THE BOARD



Edward T. Karlovich
PRESIDENT

HONORARY CHAIRMAN OF THE BOARD

Julie Andrews

CHAIRMAN OF THE BOARD

Alexander Overstrom

PRESIDENT

Edward T. Karlovich

VICE PRESIDENTS/ AUDIT

Richard J. Lipovich

VICE PRESIDENTS/ CABARET THEATER

John Dick

Meghan Barrera

Leah Ohodnicki

VICE PRESIDENT/ CLO AMBASSADORS

Christy Kobus

VICE PRESIDENT/ CONSTRUCTION CENTER & FACILITIES

Yarone Zober

VICE PRESIDENTS/ DEVELOPMENT

Mark J. Minnaugh

Joseph V. DiVito, Jr.

Laurie M. Mushinsky

VICE PRESIDENTS/ EDUCATION

Christine M. Kobus

George Gans

VICE PRESIDENTS/ FINANCE

Timothy K. Zimmerman

John A. Lemmex

VICE PRESIDENTS/ HUMAN RESOURCES

Lesley Evancho

Leslie S. Hyde

VICE PRESIDENTS/ MARKETING

Jon Galatis

VICE PRESIDENTS/PRODUCTION, NEW WORKS DEVELOPMENT & FUNDING

Peter J. Germain

Dennis Unkovic

Stephen S. Bloomberg

VICE PRESIDENTS/ NOMINATING

Scott F. Neill

Glenn D. Todd

VICE PRESIDENTS/ PLANNING

Luke A. Sizemore

VICE PRESIDENTS

Pritam Advani

Daniel I. Booker

Sherri Grask

Richard S. Hamilton

Laura Penrod Kronk

Robert C. McCartney

SECRETARY

Johanna G. O'Loughlin

TREASURER

Joseph V. DiVito, Jr.

EXECUTIVE DIRECTOR EMERITUS

Charles Gray

EXECUTIVE PRODUCER EMERITUS

Van Kaplan

CORPORATE COUNSEL

James M. Doerfler

CHAIRMAN OF THE BOARD EMERITUS

Helen Hanna Casey

William M. Lambert

George A. Davidson, Jr.

Joseph C. Guyaux

James E. Rohr

Daniel I. Booker

Louis D. Astorino

DIRECTORS

Joyce A. Bender

Tony Benevento

Patricia M. Blenko

Chris Brussalis

Jane Dixon

Clare Donahue

Gus Engel

Emilie Hammerstein

Vicki C. Henn

Paul Hennigan

Margaret Izzo

Brian Koble

Deedra Knaus

Diane B. Landers

Nicholas J. Liparulo

Margaret McLean

Timothy M. McVay

Christina P. O'Toole

Robin S. Randall

Michael Rizzo

Eric A. Schaffer

Gregg Schmidtetter

Arlene Sokolow

Helen Spalaris

LaShawnda Thomas

Joann L. Tissue

The Honorable

Debra Todd

Carla J. Vrsansky

Jake Wheatley, Jr.

ADVISORY BOARD

George Ator

Joan Bogut

Charles R. Fallon

Rosemarie R. Parse, Ph.D.

Melvin D. Rex



SHIRLEY JONES

A gala celebration of her life, career, and legacy

Saturday, September 21, 2024

4pm | Byham Theater

HOSTED BY

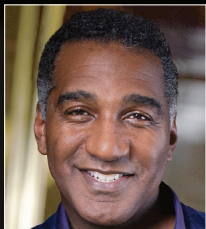
Shaun Cassidy ✨ Patrick Cassidy ✨ Ryan Cassidy

STARRING



**SIERRA
BOGESS**

(The Little Mermaid)



**NORM
LEWIS**

(Phantom of the Opera)



**JESSIE
MUELLER**

(Beautiful)



**KELLI
O'HARA**

(The King and I)



**ADAM
PASCAL**

(Rent)

SPONSORSHIP & GALA TICKETS ON SALE NOW

4:00pm Tribute Concert | Byham Theater

6:00pm Cocktails and Lite Bites | Omni William Penn Hotel

7:00-8:30 pm Seated Dinner with the Stars | Omni William Penn Hotel

Pittsburgh CLO invites you to a special concert event celebrating the extraordinary life, career and legacy of Pittsburgh native Shirley Jones, the beloved star of the original **The Music Man** film. This Gala Celebration is also a vital fundraiser for Pittsburgh CLO's Education and Artistic programs, bringing exceptional arts education and enriching experiences to the Pittsburgh community.

CONCERT-ONLY TICKETS GO ON SALE IN AUGUST

For more information, please visit PITTSBURGHCLO.ORG



Dear Friends,

Welcome to the Greer Cabaret Theater! We welcome you to our 5th electrifying production of CLO's 2024 Summer of Musicals! Mel Brooks' **YOUNG FRANKENSTEIN** is a musical comedy masterpiece that brings to life the hilarious and heartwarming tale of Dr. Frederick Frankenstein, his eccentric assistant Igor, and the quirky inhabitants of Transylvania. With its catchy tunes, witty dialogue, and memorable characters, **YOUNG FRANKENSTEIN** is a delightful homage to the golden age of horror films and a testament to Brooks' genius. It's one of the first movies I remember seeing as a young boy when my father brought home a miraculous new invention called a VHS player!

Like Dr. Frankenstein, Pittsburgh CLO is in the business of breathing life into musicals that bring our community together! We are thrilled to have you here; your presence is a testament to the vibrant and passionate community that makes live theater unforgettable. Your continuous patronage is why we bring these stories to life. Thank you for making the CLO a part of your summer.

As summer winds down, we have some special musical experiences planned for you the rest of the year:

First, we invite you to join us on Saturday, September 21st at 4:00PM at the Byham Theatre for **SHIRLEY JONES: A Gala Celebration of Her Life, Career, and Legacy**. Starring Broadway's Sierra Boggess, Norm Lewis, Jessie Mueller, Kelli O'Hara, and Adam Pascal. Shirley Jones' sons, Shaun Cassidy, Patrick Cassidy, and Ryan Cassidy will host the tribute concert. This Gala Celebration is a vital fundraiser in support of Pittsburgh CLO's numerous Education and Community Engagement programs which enrich the lives of people across our region. For event details and updates, please visit our website and follow us on social media. Sponsorships and Gala Tickets are on sale now. You don't want to miss it!

Then, this winter join us for the wickedly funny **WHO'S HOLIDAY** (November 29 – December 22nd, Greer Cabaret Theater), as grown-up Cindy Lou Who navigates the trials of adulthood with cocktails, cursing, and comedy. A perfect way to add some R-Rated adult cheer to your holiday season! And don't miss our annual holiday show, **A MUSICAL CHRISTMAS CAROL** (December 13 – 22, Byham Theater) starring Charles Shaughnessy (The Nanny and Days of our Lives) as Scrooge. This show is a must-see for the whole family and a 32-year Pittsburgh holiday tradition.

To continue your musical journey and community programs, CLO needs your support. Ticket sales cover only half of our production costs. Every contribution makes a monstrous impact. If you are already a PCLO donor, **thank you!** If not, please consider joining our growing donor family today. Each gift supports CLO's efforts to enrich our community and offers behind-the-scenes access to unique events. Visit PITTSBURGHCLO.ORG/SUPPORT for more information.

Sit back, relax, and get ready for a night of laughter, music, and fun. Enjoy the show, and we look forward to seeing you at our next production!

Mark Fleischer
Executive Producer
ExecutiveProducer@PittsburghCLO.org

THEATER CONNECTS THE WORLD. SO DO WE.

Just like the Pittsburgh CLO, we're passionate about bringing people together, creating meaningful moments and inspiring new heights.

Delta is proud to be the official airline partner of the Pittsburgh CLO.



KEEP CLIMBING



DELTA



JULY 19 - SEPTEMBER 29, 2024



MARK FLEISCHER, *Executive Producer*
Presents

MEL BROOKS'
**YOUNG
FRANKENSTEIN**

BOOK BY **MEL BROOKS** AND **THOMAS MEEHAN** MUSIC AND LYRICS BY **MEL BROOKS**

ORIGINAL DIRECTION AND CHOREOGRAPHY BY **SUSAN STROMAN**
ORCHESTRATIONS BY **DOUG BESTERMAN** AND **MARK CUMBERLAND**
"PUTTIN' ON THE RITZ" BY **IRVING BERLIN**

AT **THE GREER CABARET THEATER**

STARRING
DAN DE LUCA
TIM HARTMAN • ANTHONY MARINO

ALSO STARRING
SUSANA CORDÓN • DANIEL KRELL • CHRISTINE LAITTA • ALEX SHEFFIELD
WITH

J. ALEX NOBLE • MANDIE PATSY

SCENIC DESIGNER BOB LAVALLEE	LIGHTING DESIGNER PAUL MILLER	SOUND DESIGNER BOB BOLLMAN
COSTUME DESIGNER ALEXANDER RIGHETTI	HAIR AND MAKEUP DESIGNER TRAVIS KLINGLER	VIDEO DESIGNER KYLEE LOERA

PRODUCTION STAGE MANAGER
TIM BRADY

MUSIC DIRECTOR
ROBERT NEUMEYER
DIRECTOR & CHOREOGRAPHER
JOEL FERRELL

The Director is a member of the STAGE DIRECTORS AND CHOREOGRAPHERS SOCIETY, a national theatrical labor union.

YOUNG FRANKENSTEIN (WEST END VERSION) is presented through special arrangement with Music Theatre International (MTI).
All authorized performance materials are also supplied by MTI.

www.mtishows.com

"Puttin' on the Ritz" Words and Music by Irving Berlin © 1928, 1929 by Irving Berlin (ASCAP) © Renewed

THE VIDEOTAPING OR MAKING OF ELECTRONIC OR OTHER AUDIO AND/OR VISUAL RECORDINGS OF THIS PRODUCTION OR DISTRIBUTING RECORDINGS ON ANY MEDIUM, INCLUDING THE INTERNET, IS STRICTLY PROHIBITED, A VIOLATION OF THE AUTHOR'S RIGHTS AND ACTIONABLE UNDER UNITED STATES COPYRIGHT LAW.

Pittsburgh CLO is a founding member of the National Alliance for Musical Theatre,
Independent Presenters Network and The Broadway League.



**HEALTHCARE
REALTY**

**is proud to support
Pittsburgh CLO.**

We're the largest dedicated owner and operator of medical office buildings in the United States with \$148 million invested in over 1 million square feet across the great city of Pittsburgh. We take pride in investing in our local community.

Federal North MOB	191,610 sf
Allegheny Health Network Building	228,870 sf
Corporate One Office Park	116,260 sf
Highmark Penn Avenue Place	557,560 sf

Allegheny Health Network Building
Owned and Operated by Healthcare Realty



**HEALTHCARE
REALTY**

Corporate Headquarters

3310 West End Avenue, Suite 700
Nashville, Tennessee 37203
(615) 269-8175
www.healthcarerealty.com

Healthcare Realty Pittsburgh Office

30 isabella Street
Pittsburgh, PA 15214
(412) 321-2500



Meet Our All-Star Cast



Audi



INFINITI



CADILLAC



MAZDA



CHEVROLET



NISSAN



BUICK



TOYOTA



HONDA



SUBARU



HYUNDAI



At #1 Cochran, our star-studded cast features 19 new car brands and thousands of preowned vehicles. Shop in store at any of our 33 locations or online with *ExpressWay* at Cochran.com.

#1 Cochran **GO 1 BETTER**
cochran.com

Official Vehicle Provider for Pittsburgh CLO



A Pittsburgh legend returns

Fine Southern Italian fare

Seeped in the charm and bounty of the Mediterranean

TERRACE ROOM



OMNI WILLIAM PENN HOTEL

Thursday | Friday | Saturday

5 - 9 pm

+1 412.553.5235

PRE-SHOW DINNER

Join us before the show for a prix fixe menu
\$55* | Salad (appetizer Caesar or house), an entrée
(pappardelle, chicken or branzino) and choice of one dessert

*Price is per person and excludes tax and gratuity.



YOUNG FRANKENSTEIN CAST

Dr. Frederick Frankenstein.....	Dan De Luca*
The Monster.....	Tim Hartman*
Igor.....	Anthony Marino*
Inga.....	Alex Sheffield*
Elizabeth Benning.....	Susana Córdón*
Inspector Hans Kemp.....	Daniel Krell*
Bertram Batram.....	Daniel Krell*
The Hermit.....	Daniel Krell*
Frau Blücher.....	Christine Laitta*
Ludwig.....	Alex Sheffield*
Ensemble	
Villagers.....	Susana Córdón*, Christine Laitta*, Anthony Marino*, and Alex Sheffield*
Medical Students.....	Christine Laitta*, Anthony Marino*, and Alex Sheffield*

DANCE CAPTAIN

Mandie Patsy*

UNDERSTUDIES

J. Alex Noble* | Mandie Patsy*

*Members of the Actors' Equity Association, the union of professional actors and stage managers in the United States.

PITTSBURGH CLO ORCHESTRA

Robert Neumeyer, *Conductor, Musical Coordinator*

Bass.....	Jeff Mangone Sr. and Justin Bendel
Percussion.....	RJ Heid & Lindsey Lamagna

The engagement of our distinguished Supporting Actor, Tim Hartman, for *YOUNG FRANKENSTEIN*, in the role of The Monster is underwritten through the generous support of

Joe and Kathy Guyaux



NEXT GENERATION
CAMPAIGN

YOUR LOCAL GUIDE TO EVs

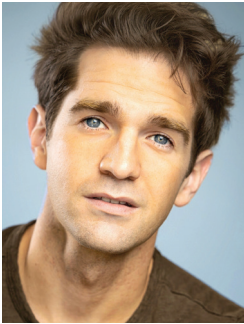
We're all about going electric. Now you can take advantage of our comprehensive EV guide and begin your journey to becoming an EV driver!

Learn more at EV.DuquesneLight.com.

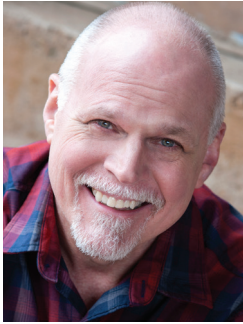




WHO'S WHO



**DAN
DELUCA**



**TIM
HARTMAN**



**ANTHONY
MARINO**



**SUSANA
CORDÓN**



**DANIEL
KRELL**



**CHRISTINE
LAITTA**



**ALEX
SHEFFIELD**



**J. ALEX
NOBLE**



**MANDIE
PATSY**



MUSICAL NUMBERS

ACT I

Overture.....Orchestra

SCENE 1: Medical School, New York City

The Brain.....Dr. Frederick Frankenstein and Medical Students

SCENE 2: Hudson River, Pier 57

Please Don't Touch Me.....Dr. Frederick Frankenstein, Elizabeth Benning, and Ensemble

SCENE 3: A Railroad Station in Transylvania

Together Again For The First Time.....Dr. Frederick Frankenstein and Igor

SCENE 4: A Hay Wagon

Roll In The Hay.....Inga, Dr. Frederick Frankenstein, and Igor

SCENE 5: Castle Frankenstein

SCENE 6: The Grand Hall of Castle Frankenstein

SCENE 7: The Laboratory

He Vas My Boyfriend.....Frau Blücher

It Could Work.....Dr. Frederick Frankenstein, Inga, Igor, and Frau Blücher

SCENE 8: The Town Hall

Hang Him 'Til He's Dead.....Inspector Hans Kemp and Villagers

SCENE 9: The Laboratory

Reprise: He Vas My Boyfriend.....Frau Blücher

SCENE 10: The Courtyard of Castle Frankenstein

Welcome To Transylvania.....Inspector Hans Kemp and Villagers

Transylvania Mania.....Igor, Dr. Frederick Frankenstein, Inga, Inspector Hans Kemp, and Villagers

INTERMISSION

There will be one fifteen-minute intermission.





MUSICAL NUMBERS

ACT II

SCENE 1: The Town Hall

He's Loose.....Inspector Hans Kemp and Villagers

SCENE 2: The Laboratory

Listen To Your Heart.....Inga
Surprise.....Elizabeth Benning, Igor, and Frau Blücher

SCENE 3: A Remote Cottage in the Forest

Please Send Me Someone.....The Hermit

SCENE 4: The Dungeon of Castle Frankenstein

SCENE 5: A Theatre in Transylvania, Loew's Transylvania Heights

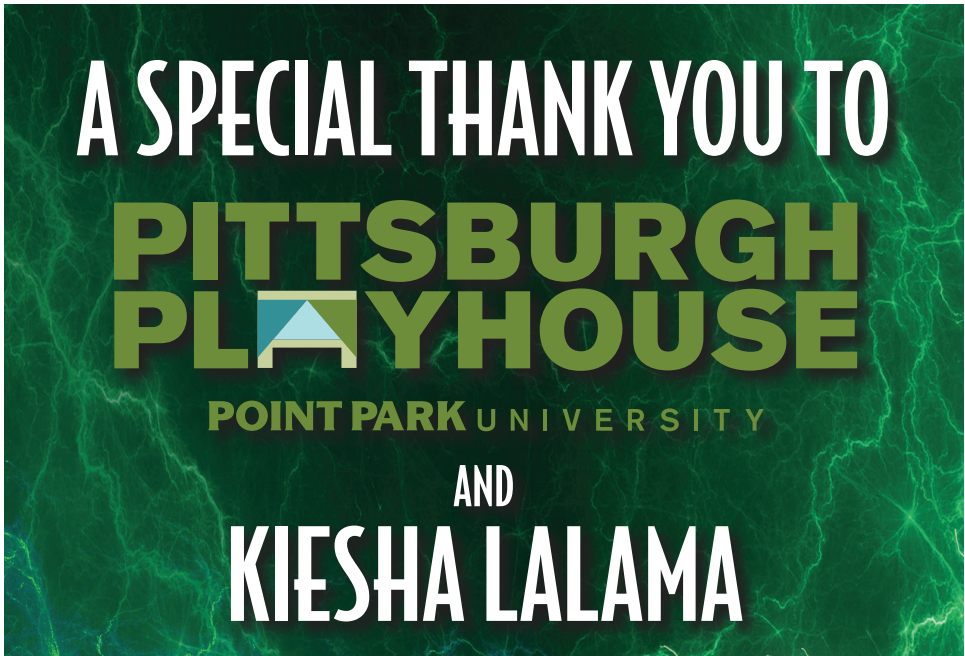
Puttin' on the Ritz (Music & Lyrics by Irving Berlin).....Dr. Frederick Frankenstein
The Monster, Inga, Igor, Frau Blücher, and Ensemble

SCENE 6: A Cave in the Forest

Deep Love.....Elizabeth Benning

SCENE 7: The Laboratory

Hang The Doctor.....Villagers
Frederick's Soliloquy.....Dr. Frederick Frankenstein
Reprise: Deep Love.....The Monster
Finale Ultimo.....Full Company



Hey Pittsburgh, wish you were here? You can be.

Fly beyond Pittsburgh, into the beauty of Iceland.
Learn more at flypittsburgh.com/booknow.



PITTSBURGH
INTERNATIONAL AIRPORT



WHO'S WHO - CAST

DAN DE LUCA (*Dr. Frederick Frankenstein*) is a theater and television actor, best known for originating the role of Jack Kelly on the National Tour of *Disney's Newsies* and the title role in Jerry Lewis & Marvin Hamlisch's *The Nutty Professor*. He just finished starring as the leading man/woman in the regional premiere of *Tootsie* with Sally Struthers & playing opposite Sierra Boggess in the Off-Broadway Revival of Neil Simon's *The Goodbye Girl*. Endless gratitude to everyone at Pittsburgh CLO, Nicolosi&Co and his amazing family. | @DDeluca15

TIM HARTMAN (*The Monster*) has been professionally acting, singing, writing, cartooning and storytelling since 1972. Known primarily for his work on the stage in over 300 professional productions, Tim's resume also includes appearances on Broadway in *A Tale of Two Cities* and the Tony nominated *Finian's Rainbow*. Tim has also appeared in 30 movies, including *Silence of the Lambs*, *A Fault in our Stars*, and *The Mothman Prophecies*. Tim's greatest joy is performing his own brand of freewheeling, stand-up comedy, and storytelling for children and family audiences. Tim is also an award-winning political cartoonist for the Pittsburgh Post Gazette. His work has appeared in magazines, books and newspapers across America. | timhartman.com

ANTHONY MARINO (*Igor, Medical Student, Villager*) is through the roof excited for being given the opportunity to portray the role of Igor for Pittsburgh CLO, alongside some of the most intelligent artists in the city. Favorite roles include Peter Cratchit in *A Musical Christmas Carol* (Pittsburgh CLO), Tribe member in *Hair!* (Pittsburgh Musical Theater), Original Musical: *Abduction* (MTAP), *Grand Hotel* (Front Porch Theatrics), Mendel in *Fiddler on the Roof* (Pittsburgh Symphony Orchestra & Pittsburgh CLO), Austin in *True West* (Westmoreland Performing Arts). He sends his love to his family and friends for their love and support. | @Anthonyamaxmarino

SUSANA CORDÓN (*Elizabeth Benning, Villager*) is thrilled to be returning to Pittsburgh CLO this summer! A recent 2024 graduate at Carnegie Mellon University, Susana played Desiree in CMU's senior production of *A Little Night Music* and Olive Ostrovsky in CMU's *The 25th Annual Putnam County Spelling Bee*. Pittsburgh CLO credits include Sister Mary Robert in *Sister Act*, *Godspell*, and *A Musical Christmas Carol*. Gratitude to this incredible cast, Pittsburgh CLO, and her family!

DANIEL KRELL (*Inspector Hans Kemp, Bertram Batram, The Hermit*) A 2019 Pittsburgh Post Gazette Performer of The Year, Dan has appeared in over 35 productions with Pittsburgh CLO. He's played major roles with the region's professional theatres, such as Pittsburgh Public, City Theatre, and Quantum, as well as theatres around the country, including Clarence Brown Theatre, PlayMakers Repertory and Gateway Playhouse, among others. Dan is a veteran of many film, TV, and voice-over productions including playing Mr. McFeely opposite Tom Hanks as Mr. Rogers in the film *A Beautiful Day In The Neighborhood*.

CHRISTINE LAITTA (*Frau Blücher, Medical Student, Villager*) most recently seen as Eulalie Mackecknie Shinn in *The Music Man* and Ms. Dilber/ Ms. Fezziwig in *A Musical Christmas Carol*. Favorite shows: *Book of Merman*, *Forbidden Broadway*, *On The Town*, *Sister Act*, *Damn Yankees*, *Into the Woods*, *Guys & Dolls*, *Game On*, and *Up and Away*, and Miss Hannigann and Miss Lynch with PMT. She directs/ choreographs *Off The Record* (the yearly spoof of Pittsburgh to benefit the Pittsburgh Food Bank). Chris is the co-author of *The Dramatically Different Classroom* (Kagan Publishing). Chris is celebrating her 23rd year of teaching Musical theater and Acting CAPA the creative and performing arts school. For mom and Paul | chrislaitta.com

J. ALEX NOBLE (*Understudy*) is excited to be back onstage with Pittsburgh CLO. Previous CLO credits include Jameson in *The Double-Threat Trio*, Harry The Horse in *Guys & Dolls*, Franz in *The Sound of Music*, Bunsen in *Disney's Newsies*, Avram in *Fiddler on the Roof*, and Ickes in *Annie*. He has also appeared onstage with Pittsburgh Public Theater, PICT Classic Theater, Quantum Theatre, Pittsburgh Playwrights, Westmoreland Performing Arts, and Pittsburgh Musical Theater. He grew up in the Pittsburgh area and is a graduate of Point Park University. He has been a member of Actor's Equity since 2012.

ALEX SHEFFIELD (*Inga, Ludwig, Medical Student, Villager*) is a recent graduate of Musical Theatre at Carnegie Mellon University. Notable credits include *The Sound of Music* (Pittsburgh CLO), *Miss Bennet: Christmas at Pemberley* (Lydia, City Theatre), *A Little Night Music* (Anne), *A Doll's House* (Nora), *The 25th Annual Putnam County Spelling Bee* (Rona Lisa Peretti), *A Funny Thing Happened on the Way to the Forum* (Philia) Originally from the UK. Thank you, family! | @AlexSheffield



WHO'S WHO - CAST

MANDIE PATSY (*Dance Captain, Associate Choreographer, Understudy*) always wondered why bios were written in the third person and has decided to abandon that tradition. Hi, I'm Mandie! Thank you so much for being here! I've had the opportunity to tour China doing *My Fair Lady* and the US doing *The Producers*, but nothing beats performing in my hometown: Pittsburgh! You might recognize me from Lincoln Park Performing Arts Center, Carnegie Stage, Split Stage Productions, Front Porch Theatricals, or from your child's arts education in and around the city of Pittsburgh. Thanks again, enjoy the show!

WHO'S WHO - CREATIVE

JOEL FERRELL (*Director, Choreographer*) is a seasoned director, choreographer, educator, and consultant based in Dallas, Texas. He is thrilled to be making his Pittsburgh CLO debut with Mel Brooks' *Young Frankenstein*. Ferrell has directed and choreographed extensively around the country for Dallas Theater Center, Denver Center Theater, Portland Center Stage, North Shore Music Theater, and many more. Mr. Ferrell is the former Associate Artistic Director of Dallas Theater Center (2011-2019, 2017 Regional Tony Award) and Artistic Director of Casa Manana Musicals (Fort Worth, TX; 1996 to 2001). In the Fall of 2023, Mr. Ferrell joined the faculty of the Meadows School of the Arts at Southern Methodist University as the Inaugural Director of the newly created Sexton Institute for Musical Theatre. Tasked with building the new musical theatre program from the ground up, he will also act as a professor of practice in Meadows' existing Division of Theatre. Ferrell is currently a producer on *The Hollow*, a wildy theatrical retelling of *The Legend of Sleepy Hollow*, adapted and performed by John Rapson, and due for an Off-Broadway run in Fall of 2024. More information available at; thehollowlive.com. Ferrell's acting credits include Broadway National tours, regional theater, television and film, most recently appearing in the Dallas produced film *The Finale*. Ferrell is a graduate of the University of Texas at Austin and a proud member of Society of Directors and Choreographers and Actor's Equity Association.

ROBERT NEUMEYER (*Music Director, Conductor*) balances duties as a music director, conductor, arranger, orchestrator and composer. At Pittsburgh CLO, Robert has served as conductor, arranger, orchestrator and pianist for over 35 productions at the Benedum Center

and Greer Cabaret Theater. Robert serves as a resident teaching artist and music director at Lincoln Park Performing Arts Center in Midland, PA. He is the conductor and arranger of *The Gene Kelly Awards*, *The Henry Mancini Awards* and serves as an associate music director and arranger for *The Jimmy Awards* at the Minskoff Theater on Broadway. Regionally, Robert has music directed and arranged for productions and special events at Carnegie Mellon, Point Park, Robert Morris and Duquesne Universities and has appeared with the national touring company of *Jersey Boys*. Robert has created arrangements and special material for Stephen Schwartz, David Yazbek, Titus Burgess, Clay Aiken, Norm Lewis, Arielle Jacobs and Jenn Colella. Robert is a proud member of the American Federation of Musicians and ASCAP.

BOB LAVALLEE (*Scenic Designer*) Dallas Theater Center - *The Christians, Dream Girls, The Mountaintop, The Rocky Horror Show, Joseph and the Amazing Technicolor Dream Coat, Raisin in the Sun, Clybourne Park, Cabaret, Second City Does Dallas, Red, and A Christmas Carol* for eight consecutive years; Casa Mañana Theater - *West Side Story; Joseph...Dream Coat; Dallas Children's Theater's National Tour - The Musical Adventures of Flat Stanley, Circle Theater- One Man Two Guvnors, Sweeney Todd, Young Frankenstein, The Mountaintop, Fences; Stage West- Between Riverside and Crazy, Cruel Intentions; the Nineties Musical, Amphibian Stage - Three Days of Rain, Time Stands Still, Hunting and Gathering, Death Tax, Fiction; Trinity Shakespeare Festival - A Midsummer Night's Dream, Love's Labor's Lost; Fort Worth Opera - Three Decembers. Resident Designer UNT Opera 5 years and resident designer for 5 years at Casa Mañana, Television Production Designer 14 years for PBS' *Barney and Friends*, over 50 (hour long) Barney home videos Lyric Studios and Hit Entertainment. Other design venues include Jubilee Theater, Kitchen Dog Theater, African American Repertory Theatre, Stage West, Water Tower Theatre, CFRT Fayetteville N.C., The North Carolina Theater and the Zach Theater in Austin, TX. Feature film Production Design - *Searching for Sonny* and *The Land of Make Believe*.*

PAUL MILLER (*Lighting Designer*) 8 Seasons at Pittsburgh CLO. Internationally, Paul's work has been seen on stage at the Stratford Festival, London's West End, Vienna, Teatro alla Scala (Milan), South Africa, China, Manila, Iceland and São Paulo. On Broadway, he has designed 5 musicals and been the Associate/



WHO'S WHO - CREATIVE

Assistant on 22 others. Notable Off-Broadway favorites include: *Desperate Measures*, *Clinton!*, *Pageant*, *Vanities - the Musical*, *Waiting for Godot*, *Nunsense*, *Encores!* (9 shows). National Tours: *Hairspray*, *Elf*, *Wizard of Oz*, *Sweeney Todd*, *The Producers*, *RENT*, *Shrek*. Regional: Arizona Theatre Company, The Old Globe, Dallas Theater Center, Chicago Shakespeare, Idaho Shakespeare, Asolo Rep, ACT, Cleveland Playhouse, Pasadena Playhouse, Goodspeed, and others. Television: *Evil* (CBS & Paramount+), *Live from Lincoln Center*, more than 20 Netflix specials, and the internationally televised *New Year's Eve Celebration from Times Square* (for 25 years).

BOB BOLLMAN (*Sound Designer*) has been a sound designer, consultant, and engineer in the Pittsburgh area for over twenty years. His many regional credits include the Pittsburgh Cultural Trust, Pittsburgh CLO, Pittsburgh Musical Theater, the Palace Theater, Stage Right, and Attack Theatre. Mr. Bollman holds a bachelor's and master's degree from Duquesne University in music performance, technology, and composition. He also is a busy music arranger for many performing ensembles and music groups throughout the region. Bob has been the houseman and house sound engineer at The Greer Cabaret Theater since 2008.

ALEXANDER RIGHETTI (*Costume Designer*) has been designing costumes in the Pittsburgh Area for over a decade, working predominantly with Pittsburgh Musical Theater and Avonworth High School, as well as other locally based theater groups. Most recently he costumed PMT's production of *Les Misérables* and has worked on immersive Theater Experiences with Bricolage Production Company. He is a part of the Pittsburgh CLO's Education Department where he works in an administrative capacity at the CLO Academy of Musical Theater. | @costumes_by_alex

TRAVIS KLINGLER (*Hair and Makeup Designer*) credits: Pittsburgh CLO, CLO Cabaret, Minnesota Opera, Pittsburgh Opera, Pittsburgh Public Theater, and Front Porch Theatricals. Travis is the hair swing for the *Hamilton* National Tour and *Wicked* National Tour. His work has been published in *Cosmopolitan Magazine*, *Glamour Magazine* and has been seen on the MTV Video Music Awards, HGTV and Netflix. | travismakeupart.com

KYLEE LOERA (*Video Designer*) is a video designer for live theatre, dance, and musicals based in New York. Kylee has worked at The Kennedy Center, The Metropolitan Opera, The Lincoln Center, The Muny St. Louis, The Bernard B. Jacobs Theatre, The 92 YMHA Theater in NYC, Signature Theater, Theatre Row, Arts Emerson, MCC Theater, The Repertory Theatre of St. Louis, and Pittsburgh CLO.

MEL BROOKS (*Book, Music, Lyrics*) was born Melvin Kaminsky on June 28, 1926 in Brooklyn, New York. He served in WWII, and afterwards got a job playing the drums at nightclubs in the Catskills. Brooks eventually started a comedy act and also worked in radio and as Master Entertainer at Grossinger's Resort before going to television. He was a writer for, *Your Show of Shows* (1950), *Caesar's Hour* (1954), and wrote the Broadway show *Shinbone Alley*. He also worked in the creation of *The 2000 Year Old Man* (1975) and *Get Smart* (1965) before embarking on a highly successful film career in writing, acting, producing and directing. Brooks is famous for the spoofs of different film genres that he made such as *Blazing Saddles* (1974), *History of the World: Part I* (1981), *Silent Movie* (1976), *Young Frankenstein* (1974), *Robin Hood: Men in Tights* (1993), *High Anxiety* (1977), *Dracula: Dead and Loving It* (1995), and *Spaceballs* (1987).

THOMAS MEEHAN (*Book*) received the Tony Award for co-writing the book for *The Producers* in 2001 and in 2003 for co-writing the book for *Hairspray*. He received his first Tony Award in 1977 for writing the book of *Annie*, which was his first Broadway show, and has written the books for the musicals *Rocky*, *Elf the Musical*, *Cry-Baby*, *Young Frankenstein*, *Chaplin*, *Bombay Dreams*, *I Remember Mama*, *Ain't Broadway Grand* and *Annie Warbucks*. In addition, he was a long-time contributor of humor to *The New Yorker*, an Emmy Award-winning writer of television comedy, and a collaborator on a number of screenplays, including Mel Brooks' *Spaceballs* and *To Be Or Not To Be*. Mr. Meehan was also a member of the Council of the Dramatists Guild. He and his wife, Carolyn, divided their time between a home in Nantucket and an apartment in Greenwich Village, near which, on Hudson Street, she owned and presided over the long-running and near-legendary children's store Peanut Butter & Jane.



WHO'S WHO - CREATIVE

TIM BRADY (*Production Stage Manager*) has appeared as an actor in 11 productions of *A Musical Christmas Carol* and various Summer Season and CLO Cabaret productions – most recently *Xanadu*. Other local theaters that Mr. Brady has performed with include The Pittsburgh Pops, Starlight Productions, The New Pittsburgh Jewish Theatre, Stage Right and The Theatre Factory. Mr. Brady was also the managing director of the Conley Inn Dinner Theater in Irwin for 17 years. Tim starred in the Jason Coll television pilot, *Munhall*.

BENJAMIN KENT PIMENTAL (*Assistant Stage Manager*) is a Pittsburgh native, who is always proud to be back working with Pittsburgh CLO! Favorite Credits: Max in *The Play That Goes Wrong* (LPPAC), Cliff in *Cabaret* (Blackrock Theater), Various in *A Musical Christmas Carol* '09/'16-'23, Linus in *You're a Good Man, Charlie Brown*, AD/ASM/Michael understudy in *tick, tick...BOOM!* (PCLO), Nahum in *Fiddler on the Roof in Concert* (Pittsburgh Symphony & Pittsburgh CLO), Billy in *Bright Star* (CCM). Love to Ali, Mom, Dad, Stelle, & CCM MT '20/'21! | bkpimental.com @[pimentalonrye](https://www.instagram.com/pimentalonrye)

MUSIC THEATRE INTERNATIONAL

(*Licensing*) is one of the world's leading theatrical licensing agencies, granting theatres from around the world the rights to perform the greatest selection of musicals from Broadway and beyond. Founded in 1952 by composer Frank Loesser and orchestrator Don Walker, MTI is a driving force in advancing musical theatre as a vibrant and engaging art form. MTI works directly with the composers, lyricists and book writers of these musicals to provide official scripts, musical materials and dynamic theatrical resources to over 100,000 professional, community and school theatres in the US and in over 150 countries worldwide. MTI is particularly dedicated to educational theatre, and has created special collections to meet the needs of various types of performers and audiences. MTI's Broadway Junior™ shows are 30- and 60-minute musicals for performance by elementary and middle school-aged performers, while MTI's School Editions are musicals annotated for performance by high school students.

MARK FLEISCHER (*Executive Producer*) serves as the artistic and administrative head of the Pittsburgh CLO producing the company's 6-show summer season, Kara Cabaret Series and its annual production of *A Musical Christmas Carol*. Mark's passion for developing

new musicals led to the creation of CLO's SPARK Festival initiative to develop new small musicals – a program made possible by the CLO's Next Generation Capital Campaign. Prior to joining the CLO, Mark was the Producing Artistic Director of Adirondack Theatre Festival from 2007–2014 where he was named the Region's Best Artistic Director by Metroland in 2009. From 1993–2002 he served as the Managing Artistic Director of Plano Repertory Theatre in suburban Dallas. With a passion for new plays and musicals, he has directed readings and world premiere productions for theatres across the country. He is a Board Member of the National Alliance for Musical Theatre (NAMT), chairing the organization's Educational Resources Committee and is also a member of The Broadway League where he serves on the Intra-Industry committee. Mark holds a BA in English Literature and Communication Arts from Austin College and MFA in Directing from the Theatre School at DePaul University.

PITTSBURGH CLO (*Producing Company*)

has been the driving force for 78 years behind the preservation, creation and promotion of live musical theatre since 1946. Founded in the years following WWII as a way to bring Pittsburgh together for a community experience, the company has grown to become one of the largest regional musical theatre organizations in the country. The organization's commitment to preserving, creating, and promoting live musical theatre is evident in its diverse programming, which includes beloved Broadway classics as well as the development of new works. PCLO's dedication to nurturing emerging talent is commendable, with numerous artists (Billy Porter, Renée Elise Goldsberry, Rob Marshall, Kathleen Marshall, Shirley Jones and many more) launching their careers under its wing. The mission extends beyond the 6 show summer series with other ongoing initiatives such as the Pittsburgh CLO Academy of Musical Theatre, the Construction Center for the Arts, the acclaimed Gene Kelly Awards for Excellence in High School Musical Theater and The National High School Music Awards (The Jimmys). Every ticket purchased impacts our own hometown, Pittsburgh, in a variety of ways beyond the stage performance. Pittsburgh CLO has always been a proud economic generator, hiring local theatre professionals to bring the best musical theatre to life. Since 1946, loyal Patrons, Subscribers, and Donors have stood beside our organization



WHO'S WHO - CREATIVE

Pittsburgh CLO Bio Contined...

to ensure production of Broadway caliber shows right here in our hometown. Pittsburgh CLO is excited to continue creating magical musical memories that are by Pittsburgh, for Pittsburgh and partnered with Pittsburgh all year long! For more information, please visit PITTSBURGHCLO.ORG





Pittsburgh CLO invites you to join us for... *London*

Fall Theatre Tour
Sept. 23 – Oct. 1, 2024

FIVE Theatre Productions in ONE Week!
including CABARET & COMEDY OF ERRORS

TOURS of Parliament, Greenwich, Hampton Court, National Theatre, Westminster Abbey & more!

\$6995
per person based on double occupancy inclusive of airfare and all taxes & fees.

1-800-962-7325 / info@break-awaytours.com

Movies in the Parks

2024 Allegheny County Summer Movie Series

Bring your blankets or lawn chairs and join us for family-friendly movies in the park. Movies start at dusk, between 8:50 and 9:15 pm. All movies are free!

- July 11: "The Little Mermaid (1989)" G
North Park Boathouse Lawn
- July 18: "Trolls Band Together" PG
Settlers Cabin Moccasin Shelter
- July 25: "Indiana Jones Raiders of the Lost Ark (1981)" PG
South Park Amphitheater
- August 1: "Migration" PG
White Oak Chestnut Shelter
- August 8: "Chicken Run" G
Round Hill Visitors Center

In the event of inclement weather, please visit our Facebook page or sign up for Allegheny Alerts for any notifications on cancellations.

For more information, scan the QR code or visit alleghenycounty.us/specialevents




**NEXT TIME
YOU ARE IN
THE CITY,
STAY & DINE AT**

Fairmont
PITTSBURGH

Located in the heart of the city's business, theater and retail hub, the Fairmont Hotel in Downtown Pittsburgh offers superb and distinctive guest services and accommodations in a luxury setting.

During your stay, dine at **f.l.2** - a modern american restaurant in a fresh and intimate setting.



To make a room reservation, please scan the QR code or visit our website at Fairmont/Pittsburgh.com or call 412.773.8800.



Fairmont Pittsburgh

510 Market Street, Pittsburgh, PA 15222
pittsburgh@fairmont.com | 412.773.8800

FOLLOW US



Fairmont Pittsburgh
Floor 2



@fairmontpittsburgh
@fl2pgh

f.l.2
modern american

The Printer Pittsburgh Has Trusted Since 1908.

Experience a legacy of quality,
reliability, and innovation with
Trust-Franklin Press Co.

For over a century, we've been Pittsburgh's
go-to printing experts, delivering top-notch
results for businesses large and small.

*Discover why generations of Pittsburgh
businesses choose Trust-Franklin Press Co.*

Contact Us Today!



TRUST-FRANKLIN PRESS CO.

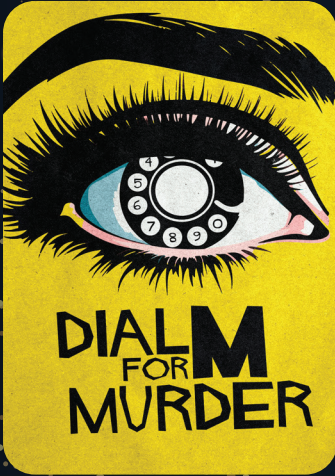
www.trust-franklinpress.com • 412-481-6442

One Season to Rule them all.

50th ANNIVERSARY SEASON

PITTSBURGH
PUBLIC
THEATER

O'Reilly Theater
PPT.org/Subscribe
412.316.1600



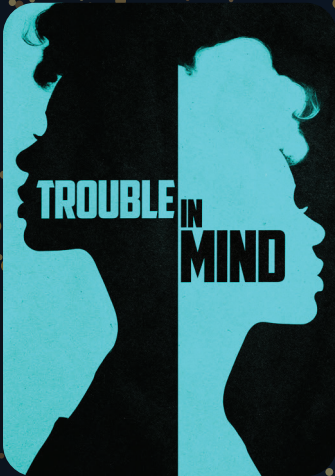
SEP 11 - SEP 29



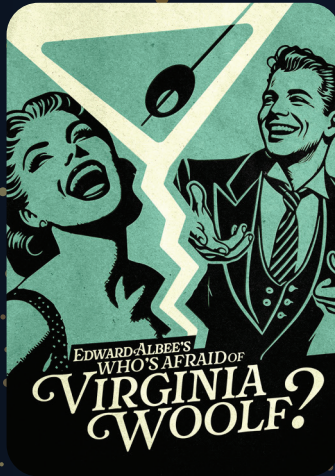
OCT 23 - NOV 10



DEC 4 - DEC 22



FEB 5 - FEB 23



MAR 19 - APR 6



JUN 27 - JUN 29

SUBSCRIBE & SAVE UP TO 45%

CHOOSE YOUR OWN POPS SERIES!

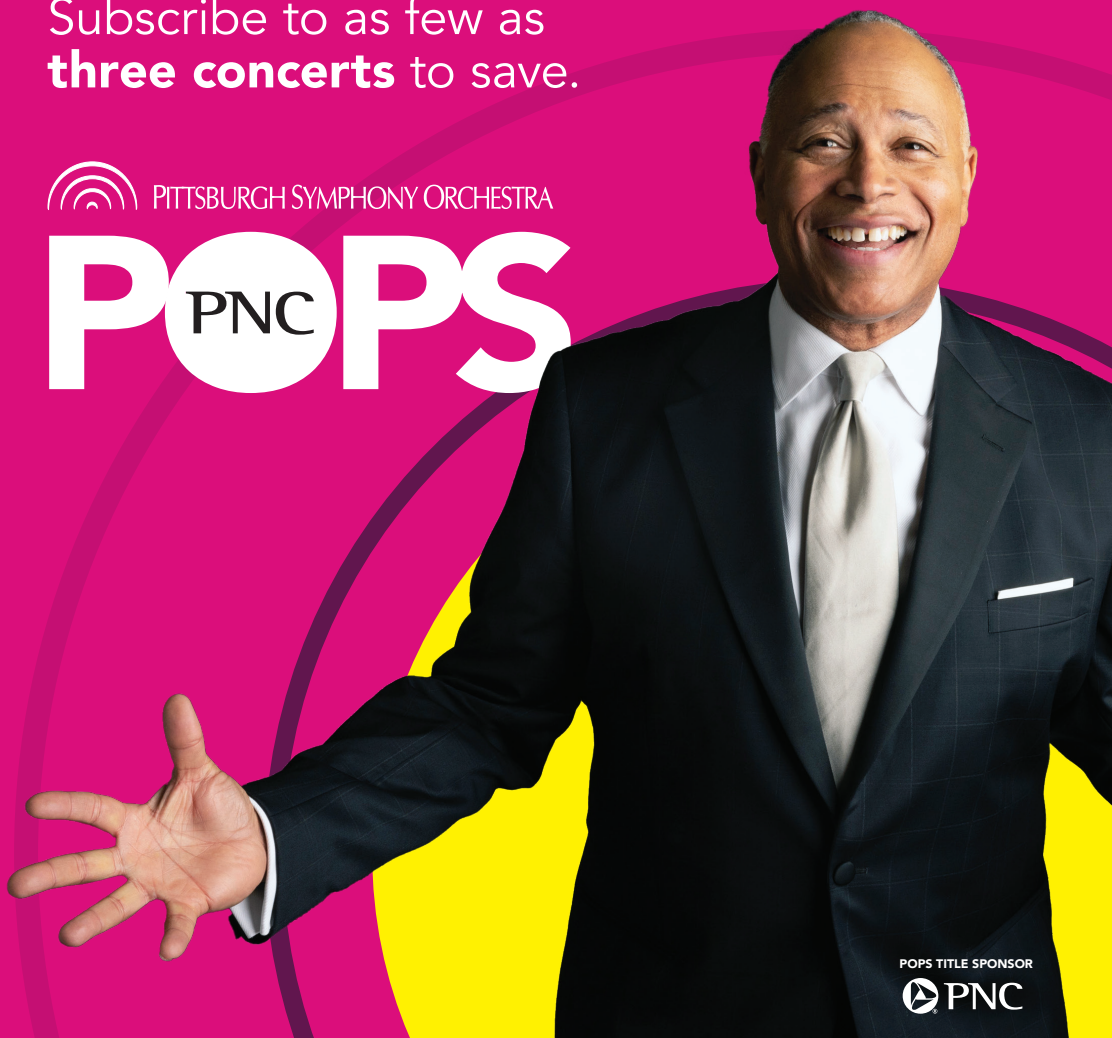

24

25
SEASON

Subscribe to as few as
three concerts to save.

 PITTSBURGH SYMPHONY ORCHESTRA

PO**PS**



POPS TITLE SPONSOR



Explore more at
pittsburghsymphony.org/subscribe





THANK YOU TO OUR PCLO DONORS

ACT 2 IS MADE POSSIBLE BY YOU!

Thank **YOU** for your philanthropic support of the Pittsburgh CLO's Annual Campaign and Education Campaign (through **JULY 12, 2024**).

Our family of Pittsburgh CLO donors plays a critical role in advancing our mission to celebrate live musical theater **made by Pittsburgh, for Pittsburgh, and in partnership with Pittsburgh**. From breathtaking musicals produced in our hometown to inspiring creative and youth-arts initiatives, your generosity keeps breathtaking musical theatre affordable and accessible to everyone in our community.

DONOR KEY: IMO: In Memory Of | IHO: In Honor Of | (): Number of Years

THE PITTSBURGH CLO IS GRATEFUL FOR THE GENEROUS SUPPORT PROVIDED BY THE PITTSBURGH CULTURAL TRUST

CORPORATIONS

DIAMOND CIRCLE

\$25,000 AND ABOVE

#1 Cochran (18)
Dollar Bank (23)
Healthcare Realty (8)
Highmark (32)
Howard Hanna
Real Estate Services (14)
Omni William Penn Hotel (15)
PNC (70)

GOLD CIRCLE

\$10,000 - \$24,999

Baird (29)
Chubb Group of Insurance
Companies (14)
Deloitte, LLP (17)
Delta Air Lines (8)
Educational Opportunities LLC
Giant Eagle, Inc. (19)
KeyBank (12)
Koppers (14)
Pittsburgh Steelers (3)
The Frank E. Rath - Spang &
Company Charitable Trust (45)
ReedSmith (18)
UPMC (21)
Williams Coulson Johnson Lloyd
Parker & Tedesco, LLC (1)

SILVER CIRCLE

\$5,000 - \$9,999

84 Lumber (3)
Alco Parking (19)
AON (4)
Ernst & Young (26)
Federated Investors
Foundation, Inc. (16)
First National Bank (2)
K&L Gates, LLP (17)
KPMG (20)
MSA Safety (58)
TriState Capital Bank (3)

EXECUTIVE

PRODUCER'S CIRCLE

\$2,500 - \$4,999

AI Solutions
Champ Printing Company (9)
Eat'n Park Hospitality Group (1)
Enkompas Technology Solutions (2)
Development Dimensions
International (12)
Littler Mendelson, P.C. (2)

Post & Schell (10)
PwC (8)
Saul Ewing Arnstein
& Lehr, LLP (6)
Schneider Downs (23)
Specialty Conduit & Manufacturing
Tudi Mechanical Systems (3)

PRODUCER'S CIRCLE

\$1,000 - \$2,499

Ampeco-Pittsburgh
Charitable Foundation (30)
Bender Leadership Academy (5)
Confluence Financial Partners (2)
Diamonds by Rothschild (2)
Assured Partners of PA (21)
HHM Insurors (19)
Mars Bank (8)
McGrath McCall, P.C. (3)
Sitko Bruno, LLC (4)
Tomayko Group Holdings
Tudi Mechanical Systems (3)

FOUNDATIONS

Bozzone Family Foundation
The Jack Buncher Foundation
The Charity Randall Foundation
The Anne L. and George H. Clapp
Charitable and Educational Trust
Cooper-Siegel Family Foundation
Edith L. Trees Charitable Trust
Ganassi Foundation
The Grable Foundation
The Heinz Endowments
Irene C. Shea
Charitable Foundation
Helen M. Knepper Memorial Fund
of The Pittsburgh Foundation/
Community Foundation of
Westmoreland County
Massey Charitable Trust
Founders: Harris B. Massey
and Doris J. Massey
McKinney Charitable Foundation
Milton G. Hulme
Charitable Foundation
The Vernon C. Neal
and Alvina B. Neal Fund
W.I. Patterson Charitable Fund
Pauline Pickens Charitable Trust
Richard King Mellon Foundation
Robert and Mary Weisbrod
Foundation
The Falk Brothers Fund

PUBLIC SUPPORT

Allegheny Regional Asset District
ARP-NEA-Grants to the Arts
Pennsylvania Council on the Arts
Small Business Administration
Shuttered Venue Operators
Grant Program

GENE KELLY

PRODUCERS SOCIETY

*PCLO's Gene Kelly Producer's Society
is a community of remarkable
philanthropists who share an
extraordinary commitment to
Pittsburgh CLO.*

TITLE PRODUCERS

\$25,000 AND ABOVE

Dan and Debby Booker (36)
Stephen and Helen
Hanna Casey (33)
Joan Clark Davis (26)
The Estate of Eleanor Dragan (16)
Dolores Kara
IMO Michael J. Kara (24)
John Keith Maitland Fund of
The Pittsburgh Foundation/
Community Foundation of
Westmoreland County (47)
Robert C. McCartney (42)
The Estate of Reverend
Thomas A. Wagner (30)

LEAD PRODUCERS

\$15,000 - \$24,999

Hal and Kimberly Burch (8)
Gus and Annie Hanna Engel (6)
Joe & Kathy Guyaux (23)
Edward T.
and Suzanne F. Karlovich (21)
Bill & Sandy Lambert
IHO our daughters:
Emily & Kelly (24)
Jim and Lisa McQuade (6)
Carol H. Tillotson
IMO Anne C. and
Arthur R. Hefren (15)
Mr. and Mrs. Alexander
Overstrom (4)
Ava Wilson (7)

EXECUTIVE PRODUCERS

\$10,000 - \$14,999

Barbara Chait
IHO Van Kaplan (6)
Joe & Karen DiVito (13)
Mr. and Mrs. Peter J. Germain (19)

THANK YOU TO OUR PCLO DONORS

ACT 2 IS MADE POSSIBLE BY YOU!



EXECUTIVE PRODUCERS CONT'D...

Deedra Knaus (8)
Bryson and Meg Lesniak (1)
Mark & Diane Minnaugh (20)
Specialty Conduit
& Manufacturing, LLC (14)
Glenn & Stephanie Todd (9)

PRODUCING DIRECTORS

\$5,000 - \$9,999

William P. Anderson (24)
Mrs. Patti Matty Blenko
IMO Walter Blenko (42)
Kim & Curt Fleming (24)
George and Daphna Gans (7)
Patrick A. Gray (5)
Emilie Hammerstein (1)
Vicki C. Henn (8)
Michael and Evonne Henry (6)
Leslie Hyde (5)
Bryson and Meg Lesniak (1)
Nicholas and Anne Liparulo (11)
Mr. Allyn J. Lynch (11)
The Malandro Family (5)
Tim McVay and David Bush (5)
Jim and Lisa McQuade (7)
Robert and Christine
Pietrandrea (10)
Luke and Allison Sizemore (10)
Arlene & Barry Sokolow
IMO Anna & Nicholas Zelkovic (21)
Specialty Conduit &
Manufacturing, LLC (14)
Justice Debra and Stephan Todd (16)
Gary and Debbie Truitt (21)
Dennis and Diane Unkovic (15)
Travis and Nikki Viglione
Williams (8)
James R. Wiltman (19)

PRODUCERS

\$3,000 - \$4,999

Anonymous
Pritam and Binu Advani (6)
Dr. Vitasta Bazaz-Sheeh Sehgal -
Fund IMO Dr. Kuldeep Sehgal of
The Pittsburgh Foundation (21)
Stephen and Dana Bloomberg (10)
Dr. Kerry Bron and
Mr. Robert Levin (2)
Adam and Patricia Davidson (19)
George and Ada Davidson (40)
Phyllis and Tom Davidson (2)
Joy Dawso (15)
Jane & Michael Dixon
IMO Cheryl Young (24)
Mr. and Mrs. Richard Dougherty (8)
Cathy and Randy Emanuelson (6)
Jeff and Jennifer Erdely (3)
Dr. Edward L. Foley (25)
David and Deborah Freeman (12)
Gary and Michele Gatto (3)
Richard S. Hamilton Foundation (22)
Mr. & Mrs. Robert A. Harlan (23)
Greg and Debbie Knowles (9)
Brian and Suzanne Koble (3)

Tom & Chris Kobus (27)
Cher Kotovsky
IMO Irwin Kotovsky (3)
John and Lisa Lemmex (6)
Dr. Diane Beynon Landers (10)
Richard and Lynn Lipovich (9)
Raymond & Karen Love (22)
John & Cathy Mary (12)
Margaret A. McLean
and Stanley Yorsz (11)
Michael and Wanda McGarry (9)
Janice and Ernie Meade (11)
Ed and Deb Moretti (8)
Kari Murphy (1)
Laurie Burkhart Mushinsky (20)
Jordan and Laura Nicholas (7)
The O'Loughlin Family
Charitable Fund (23)
Leah and Paul Ohodnicki (15)
Christina O'Toole
IMO Paul & Helen Triko (13)
Bob Powell (5)
Robin Randall (4)
Barbara Riehle (1)
Mike Rizzo (1)
Roseann Rosnick (4)
Jim and Linda Rumbaugh (3)
Randi L. Starr (8)
Mark and Tammy Steele (28)
Marcia and Louis Swartz (8)
Joan L. Tissue (9)
Elizabeth Toole
IMO Mrs. Michael Kutsenkow (4)
Melissa Ungar (13)
Mr. & Mrs. William H. Van Duzer (25)
Tom and Lynne VanHimbergen (4)
Mr. Richard J. Voller
IMO Debra J. Voller (37)
Matt Williams
in loving memory of
Teresa and Robert Williams (23)
Mr. & Mrs. W. Robert Wells (36)
Dr. Audrey Zelkovic
IMO Anna & Nicholas Zelkovic (12)
Tim & Linda Zimmerman (35)

ASSOCIATE PRODUCERS

\$1,500 - \$2,999

Anonymous
Tripp and Nancy Amick (7)
Jen Bohland-Anhalt
& Joshua Anhalt (15)
Michele and Pat Atkins (3)
Meghan and Jose Barrera (10)
Elaine M. Bellin and Phyllis D. Coontz
IMO Patty Maloney (7)
Joyce Bender (9)
Anthony Benevento (1)
Beatrice Bonfiglio
IMO Alfred Bonfiglio (26)
W. Dennis and Penny Bossick (3)
Carolyn Bouchard (1)
Felicitas Caracoche (4)
James P. Cassaro (6)
Stacy and Christopher Dee (12)
Teresa and Christian Farts (1)

Wynne Rooney Fedele
IMO George W. Rooney, Jr. (17)
Theresa B. Fedio (24)
Holly and Mark Fleischer (4)
Warren R. Fugate (5)
Mrs. Lori Giordano-Bosiljevac (3)
Richard S. Hamilton Foundation (22)
The Howe Family (5)
Drs. Martha and Lawrence John (9)
Christy Kobus (11)
Greg and Debbie Knowles (9)
In loving memory of
Dr. Susan Cohen
(from Christy and Aaron Kolkko) (5)
Angela and Scott Langill (2)
Fred and JoEllen Leech (9)
Jamie McGovern (3)
Brandon Marzke (2)
Marcia Metelsky (2)
Marcia S. Morton (51)
Scott & Jennifer Neill (21)
Randall Olson (11)
William and Audia Otto (15)
Paul and Paula Palmer
In Honor Of Charlie Gray
and Van Kaplan (21)
Jean Marie Perry (10)
Elisa and Terry Poole (2)
Dawn Predmore
and Patrick Putorti (1)
Susie and Jerry Robinson (24)
Eric and Michele Schaffer (18)
Ken and Toni Senator (33)
George and Helen Spalaris (11)
Sterling Family Fund of
The Pittsburgh Foundation (11)
Betsy and Tom Teti
IMO Charles and Anne Lynn (26)
LaShawnda A. Thomas (3)
Carla J. Vrsansky, Esq. (19)
Sally Wade (37)
Bob Williams (23)

MEMBER DONORS

PATRONS

\$500 - \$1,499

Anonymous
Anonymous
IHO Dan and Debby Booker (3)
Kathryn and James Bann (9)
Jim Bobenage (1)
Charles & Shelly Bossong
IMO Charlotte (25)
Debbie Boughner
IMO Jim Boughner (5)
Ellen Carabin (14)
Ms Nanette Catarinella
IMO Roland Catarinella (65)
Heather M. Chappars (14)
Mrs. Clare Donahue
IMO Thomas M. Donahue (10)
Mr. and Mrs. Richard Dougherty (9)
Merrill and Theresa Druggs (20)
Carl Dudeck, Jr. (14)
Brian and Tricia Eccher (3)



THANK YOU TO OUR PCLO DONORS

ACT 2 IS MADE POSSIBLE BY YOU!

PATRONS CONT'D...

Elias Fedele (3)
Jeffrey & Karen Fink (28)
Galatis Family (3)
Marlene Goldstein
IHO Sharon Goldstein (2)
Charlie and Patricia Gray
IHO the administrative
and production staffs (34)
Rev. Dr. James R. Gretz (38)
Andrew and Darlene Hasley (3)
Richard and Ruth Ann Hess (57)
MAC and George Hoover (6)
Donna and Keith Impink (1)
Kendra Whitlock Ingram
and Ben Ingram (1)
Jeff Irwin, D.D.S (37)
Tom and Cathie Johnson
IMO Elizabeth J. Kindelberger (8)
Briana and Jeff Kent (3)
Arthur Kerr (44)
Diana M. Kobus (5)
The J & MA Krolkowski Fund (12)
Darren and Linda Leonard (16)
Michael Leonard (1)
Milan Markovich (2)
Paul C. McBeth, III (4)
Jacquelin A. McCauley (11)
Dr. & Mrs. Brendan McGuire (6)
Richard and Nancy McKnight (35)
Catherine Mechling (26)
Mrs. Joan Milsom (22)
Jeff & Patty Nayhouse (23)
Mr. & Mrs. Richard L. Neish (13)
Mr. and Mrs. James O'Neill (25)
David & June Nimick (27)
Deerfield Nimicks (5)
Todd and M'Lisa Oravitz (4)
Steven and Helen Patricia (16)
Rose M. Perryman (22)
Christopher and Mary Rawson (11)
Leslie and Peter Robinson (17)
Iva and Gene Saraceni
IMO our daughter,
Elyse Jeanne Saraceni (14)
Susan Sargent (10)
Gregg Schmidtetter
and Lisa Gavlik (2)
Bob and Lori Shelow (6)
Martin Signore (1)
Jerald and Bonnie Solot (1)
Richard Stewart (5)
The Stoffel Family
IMO Dale Stoffel (10)
Caitlin Stritmatter (1)
Reverend James R. Torquato (13)
Charles and Sue Turner (33)
Michael and Lisa Walsh (22)
Ramona Ward (4)
Mr. and Mrs. Thomas E. Wash (17)
Henry and Rosemarie Wetzel (9)
Mr. and Mrs. Robert W.
Wickerham (34)
Julie Wiles (9)
Mr. John C. Williams, Jr. (29)

Patti and Randy Wynkoop (14)

SPONSORS

\$250 - \$499
Anonymous
Anonymous
IMO Mary Helen Fuhrer
and Frank Fuhrer
Dr. & Mrs. Lee Agostini (32)
Joann S. Anderson (14)
Pamela Andreyko (2)
Nancy Arshoun (5)
Mary and Len Bach (9)
Dr. and Mrs. Ivan Baumwell (11)
George Bielich (7)
Joan Margaret Blasinsky (13)
Michael and Carol Bleier (21)
Robert C. Blough, Jr. (7)
Pamela Bolkovac (11)
Jean-Pierre Bonasso
IMO Stephanie Krick (1)
Michelle and George Bonnar (2)
Dale and Leigh Booker (7)
Kathleen Boykin (33)
Myron and Jeanne Caplan (1)
Kathy Charochak (1)
Tom and Dale Christopher (20)
Mr. Edward E. Clever
IMO Barbara J. Clever (15)
Tom, Liz & Shannen Cloherty (4)
Michele Rone Cooper (19)
Steve Cuden
IMO Leon Zionts (5)
Bob and Judy Cunningham (1)
Stacey Daily
IMO John Daily (3)
Alice DeCaria (2)
James and Theresa Doerfler (22)
Steven Doerfler (6)
Jeanne Drennan (3)
John Dreistadt (3)
Dr. Peggy Farrah
IMO brothers, Sonny
& Bobby Farrah (13)
Craig and Cynthia Flanagan (2)
Margaret Figgins
IMO David F. Figgins (44)
Robert and Helen Fitzgibbon (7)
Mr. Gene S. Forsythe (12)
Mr. and Mrs. Edward
Fortwangler (13)
Katherine and John Freed (14)
John and Elaine Frombach (5)
Ben and Michelle Gallagher (3)
John and Sandy Gandolfi (5)
Alvaro and Sandra
Garcia-Tunon (17)
The Clem Gliotti Jr. Family (14)
Mr. & Mrs. Kurt Gottschalk (19)
David Gotwald & Peter Franzen (2)
Carolyn Grant (1)
Mr. and Mrs. William Greb (10)
Joann and Anthony Grieco (18)
Robert D. Harrison (6)
Amy and Paul Hoback (9)
Mr. and Mrs. Ben Andrew Huber (4)

Russell W. Johnson
IHO Eileen B. Johnson (3)
Dr. & Mrs. Robert T. Jones, Jr. (35)
Ms. Sherdina Jones (6)
Dr. Chris & Mrs. Emily Kaufmann (5)
Mary Kellam
IMO Robert C. Milsom (5)
Mr. and Mrs. William B. Kent
IMO Peggy Paul (8)
Gary and Betty Kessler (14)
Maria Kovacs (8)
Emily Lambert (3)
Jeff and Teri Lammert (1)
Richard and Victoria Laphishka (1)
Joan E. Lavery
IMO John P. Lavery (24)
Mr. and Mrs. Shawn Leifheit (13)
Mr. and Mrs. Craig C. Linner (2)
David M. and Joyce E. Lipkin (9)
Margery J. Loevner (4)
Jennifer Long (4)
Mr. & Mrs. Robert Madar (21)
Kay Manecke (10)
Richard Marciniak (18)
Dr. and Mrs. James McCann (13)
Mr. and Mrs. Samuel McClure (12)
Dr. Graham
and Elizabeth McIntosh (7)
Dr. Amy Mehta (1)
Mary Ann and Terry Mohr (12)
Carroll and David Morrison (11)
Ms. Bonita Mullaugh (12)
The Murray Family (9)
Tim and Carol Murray (8)
David & June Nimick (27)
William and Audia Otto (15)
Chris and Diana Patella (1)
David B. Patrick (1)
Ms. Lynley Pavkovich (5)
Warren and Sharlene Perring (11)
Dave and Meg Rauth (3)
Edward and Anna Marie Rice (19)
Mona and Bob Riordan (28)
John and Joni Roland (14)
Don & Mary Rugh (24)
Mrs. John M. Sadler (11)
Paul Schamer (10)
Mary Seghi (25)
Ronald and Linda Siegel (3)
Josh and Patricia Sivitz (2)
Ann K. Shaner (5)
Ira and Lucy Snyder
IMO Allan Snyder (7)
Susanne and Ron Sommer (12)
Mr. & Mrs. Marlis Stacy (9)
Mr. and Mrs. David R.
Steinberg (24)
Jody Stockhill (2)
Cait and Spencer Sturgeon (3)
Robert and Vonnie Teagarden (5)
Gayle Tissue
and Yiannis Kaloyeropoulos (2)
Stephanie Veenis (2)
Nancy and Will Willems (12)
Al and Peg Williams (3)



THANK YOU TO OUR PCLO DONORS

ACT 2 IS MADE POSSIBLE BY YOU!

SPONSORS CONT'D...

Janice Wirth (15)
Gary and Diane Workman (7)
Tom Wyse, Jr.
and Robert A. Neft (27)

LIMELIGHTERS

\$100 - \$249

Anonymous

Anonymous

IMO Agatha Anonymous

IMO Richard S. Mowl Jr.

A. L. Abramovitz (9)

Kathryn Adams

IMO Forbes Adams (2)

John Aiello (7)

Kelly J. Albenze (1)

Dorcas Alexander

IHO Robert Alexander (1)

Ted and Donna Alexovich (7)

Elizabeth R. Amber

IMO Wayne Amber

& James Emswiller, CAS (11)

Charles and Veronica Anchors (13)

Mr. and Mrs. Anderson (1)

Sandy Artzberger (4)

George W. Ayres IMO

Joyce Davis Smith (6)

Debra Baldesberger (9)

Leroy and Ginger Ball (4)

Colleen Balsano (1)

Laura Barry

IHO The Awesome CLO Staff (10)

Dave and Trish Bartlett (1)

Mr. Gerald Bartolomucci (5)

Diane Berquist

IMO Michael J. Berquist, Esq. (5)

Kirk F Betteridge (1)

Jody Bishop (1)

Mr. David Blackmore (20)

Paul E. Block (23)

Michael Blow (1)

Cesare and Anita Shaw Brogneri

IMO Our Parents (1)

Sharon Bono (1)

Fran and Harvey Borovetz (1)

Dale and Leigh Booker (7)

Mr. and Mrs. Dale Booker (7)

Michael and Maxine Botti

IHO Mike Botti (7)

Dorothy L Boyer (1)

Scott Branvold

and Lynda Davidson (12)

Elizabeth Brokaw (1)

Emily Brooks (1)

The Brown Family (4)

Mary Ann Brown (2)

Mary Patricia Brown (16)

Mr. and Mrs. Steve Brown (3)

Mr. and Mrs. Edward E. Brunins (9)

Mr. Russ Carley (1)

Dan and Doreen Casey (9)

Helen Cestra (1)

Chris Chaney (1)

Vanessa Chapman (2)

Frank and Theresa Cicci (3)

Gary and Jo Ann Claus (31)

Nat and Diane Cohen

IHO Jim Mercer (19)

Erin Cook (1)

Ruth and Carl Crowe (2)

Fred and Joy Cullen (10)

Catherine M. Daily

IMO Hazel P. Daily (29)

Stacey Daily

IMO John Daily (2)

George and Kathleen Daniels (7)

Steve Daquilanto (2)

Michael Davidow (1)

Dr. and Mrs. Tim DeBiasse (12)

Laura DeDi (1)

Michele DeGrazia (1)

Diane Deluca (2)

Peter and Melba Dibble (4)

Nick and Michele Ditullio (8)

Beth Ann Docherty

IMO Janet M. Docherty (11)

Mr. Paul S. Drost (22)

Scott J. Donaldson

& Michael Hunter (12)

Mr. and Mrs. Patrick Dunphy (27)

Mary Jane Edwards (9)

Timothy Eicher (1)

Gerald and Dawn Ellison (4)

Jenna Marie Enright Taylor (1)

Mike & Margie Evans (9)

Jacquelyn Ewalt (1)

Frank and Lisa Falcione (3)

Debbie Fannin (1)

Mark and Carolyn Farabaugh (11)

George Farah (1)

Mr. Frederick Faraone (1)

Jacqueline Fennell (3)

Bob and Amy Ference

IMO Marie Ference (4)

Armand Ferrara (4)

Cheryl Ferri (1)

Kristian Feterik (3)

Mr. and Mrs. Robert Fiedler (12)

Tom and Sue Finegan (7)

Sarah Finney (3)

Jim and Paula Fiorucci

IMO Carol Fiorucci (17)

Bruce Fisher (1)

5 Js (16)

Peggy Forquer

IMO Betty Forquer (1)

Suzanne Fountain (1)

Mr. & Mrs. Paul K. Fox (31)

Kenneth T. Frankenbery (11)

John and Susan Frantz (2)

Friedlander Family (12)

Linda Froehlich

IMO Richard D. Froehlich (4)

Michael D. Gaber (2)

Thomas Garnett (1)

Shirley Gaudette (2)

Bernard T. Geiser (1)

Damian and Hayah George (10)

Linda J. Haynes, MD (11)

Mr. and Mrs. William D. Ghrist III (21)

Rachel Gilman & Tina Cutone

IHO Abigail Gilman (4)

Angella Goetz (10)

Lisa Ann Goldsmith (1)

Tom and Cathy Gothie (19)

Stephen Graf (6)

Cyndy Graves (11)

Eddie Grimes

IMO Greg Triko (8)

Marjorie C. Gross (3)

Mark M. Gudalis (5)

Brandon Guzy (1)

Mr. Robert Haddox (1)

Dave and Beth Haines (1)

Denise Hampson (4)

Mr. and Mrs. Thomas R. Harley (4)

Niki Harris and Zane Weiner (8)

Michael and Tammy Hart (1)

Donna Hazel (3)

Ms. Paula Heil (6)

Michael and Diane Hillebrand (1)

Janice L. Hixson (7)

Lois M. Hoffman

IMO Mr. and Mrs.

Edward Hoffman (21)

Iris Holleran (1)

Daniel and Vicki Holthaus (11)

Melissa Hook (8)

Larry and Denise Hoover (14)

Mr. Bruce Hostler (15)

Millie Hutchison (2)

Michael Iannone (1)

Dr. and Mrs. Ralph E. Jones (6)

Ron and Eileen Jones (1)

William Jones (1)

Elaine Kaczmarek

IMO Dorothy Procupp

and Joanne Readshaw (21)

Jim and Cheryl Kassner (4)

Mary Kellam

IMO Robert C. Milsom (5)

Kelly and Walter Keller (2)

Patsy & PK Kennedy (4)

Roy and Lori Kern (4)

Russell Kern (1)

Mr. and Mrs. Kevin Killinger (6)

James and Nita Kincaid (1)

MaryAnn & Bill King (25)

Debra and Jack King (14)

James R. Kirsch

IMO Audrey K. Kirsch (14)

Mr. Dennis Knapp (1)

Diane Knechtel (21)

Bruce Knepper (1)

Dr. Stephanie Kobil (28)

Lou M. Kramer, Jr.

IMO Louis Kramer, Sr. (11)

Shawn and Judith Kramer (6)

Mac and Eileen Kravitz (17)

Margaret and Dan Lackey (6)

Joan Lacomis (4)

Nancyann Letterio (6)

Neil and Sharon LeJeune (11)

Dirk M. Lesnett (2)

Leslie and Rich Levine (5)



THANK YOU TO OUR PCLO DONORS

ACT 2 IS MADE POSSIBLE BY YOU!

LIMELIGHTERS CONT'D...

Jonathan Levinson (1)
Jeff and Rachel Lizik (8)
Kate Loy (4)
Jeff and Dr. Jae Luck (4)
Ronald and Christine Lunardi (24)
Robert Lutner (2)
Carole Malik
 and Marlene Campas (2)
Mr. & Mrs. Gregory D. Maloney (30)
Janet K. Manuel (17)
Rudy & Rose Marshalek (1)
Jim and Maribeth Masquelier (1)
David Maxwell (36)
Larry and Michaelene
 McCahan (32)
Mrs. Neva McClymonds
 IMO John McClymonds (9)
Amanda McCoy (1)
Mark and Patricia McGinley (7)
Paul and Melissa McLane (6)
Mr. and Mrs. Daniel Meier
 and Family (7)
Christine Matelan (1)
Bob and Chris Meyer (9)
Robert and Lynn Mialki (7)
Joseph and Gina Milcoff (5)
Robert and Amber Miles (6)
Justin J. Mohney (3)
Dr. and Mrs. James D. Moore (15)
Jeff and Crystal Moore (1)
Lee Morehouse (4)
Jim and Deborah Muders
 IMO Tony Wiecekowski (17)
Wendy Murdock (1)
Jennifer Murr (1)
Richard Narvin
 IHO My Bunny (3)
William Naylor
 IMO Mary D. Naylor (2)
Marisa Nero (1)
William Noel (3)
Dan and Lisa Nydick (17)
Alice Oakes (5)
Michael J. O'Brien (3)
James Ohr (2)
Pascal Family (1)
Jo-Ann Paulenda (7)
Kathy & John Pechunka (15)
Richard and Deborah Peltier (1)
Vincent Petrocelli
 IMO Carole L. Petrocelli (18)
Mark F. Piedmonte (5)
Mr. and Mrs. Stephen F.
 Piskurich (26)
Mr. & Mrs. Donald J. Platt (27)
Cindy & John Pokora
 IMO Lil Sciuilli (12)
Kathy Jo Pollack (20)
Kenneth Powell (1)
Barry B. Premoshis (23)
Barbara Provenzano (20)
Barbara Provenzano (18)
Jim and Maura Puchany (4)
Quality Repair Services, LLC (10)

Sue Quinn (4)
Pamela Rakosky (1)
Joshua and Brielle Reicks (5)
Edward M. Reppa, Jr. (17)
Mr. & Mrs. Frank Ricco Jr. (13)
Melinda Rietzel (2)
David and Sylvie Rigdon (7)
Denise & Rusty Roach (2)
Gary and Cookie Roberson (2)
Marcy Robertson (2)
Kristen Rohr (2)
Dante Romito (1)
Al Rose
 IMO Diane Rose (17)
Rosella Rosener (14)
Wendy Ruch (1)
Sally and Edmund Ruffin (1)
Kathy Ruffing (1)
Ms. Kathleen Sacco
 & Mr. Andrew Greiner (2)
Frank and Denise Salopek (8)
Dianne Scansaroli (9)
Mark Scappe (6)
Mr. Jim Schepis (1)
Mr. and Mrs. Daniel C.
 Schetley (11)
John C. Schlotterer (8)
Edward R. Schneider (4)
Carl W. Schultz (6)
Emily Busse Schwartz
 IMO John and Maggie Busse (2)
Jim and Sheree Sciarretta (5)
Victoria and David Serafini (19)
Brian Sergi-Curfman (2)
Steve and Linda Sesack (2)
Madalaine T. Shigle
 IMO Therese "Grammy" Sciuilli (5)
Vincent J. Siciliano
 IMO John A. Siciliano (39)
Carol Sikov Gross
 IMO Rhoda F. Sikov (5)
Teresa Sirianni (1)
Jacob and Rula Skezas (10)
Walter and Gayle Sklarsky
 IMO Clara Sklarsky
 and Sandra Cessna (16)
Bob and Chris Sloboda (8)
Joseph and Lynn Smith (10)
Ruth Snyder (2)
Tom and Karen Sochacki (2)
Lyn Sokol (1)
Steve Sokol (1)
Susan Sorbo (12)
Jocelyn Steele (2)
Carol M. Stein (18)
Mr. & Mrs. Gregory A. Stein (35)
Joe Stevens (9)
Jenny and Kelly Stewart (7)
Troy and Julie Stiffler (2)
Debra Stiger (6)
Mr. and Mrs. George S.
 Stipetich (3)
Dennis and Allison Stombaugh (6)
Christine and Ronald Stout (1)
Wade and Barbara Stull (6)

Jayelyn Swink (3)
Janet L. Templer
 IMO Carol R. McAuley (24)
Taylor Toth (1)
Charles F. Traeger
 & Rita Powrozniak-Traeger (9)
Nancy and Gary Tuckfelt (5)
 IMO Jay and Renee Minsky (6)
Catherine Turner (25)
Penny Tzortzis (3)
Keith and Carol Unidas (3)
James and Dorothy Valimont (12)
Jane A. Vaselenak (4)
Matt and Dr. Anne Veres (5)
Kathleen M. and Emil P. Varnise (1)
Marilyn and Joseph Vettorazzi (9)
Janet Wagner (1)
William and Susan Wagner (1)
Dan and Lee Ann Wahl (4)
Jason Waltz (1)
Justin Weissert (1)
Jane Werner and Bob Rutkowski (1)
Karen and Fred Wheeler Jr. (3)
Michael and Shelby Wherry (6)
Dick and Margaret White (17)
Peggy C. Whitehurst (8)
Mr. David E. Winklmann (8)
Brandon Wolfe (1)
Carol Worstell
 IMO Mildred Worstell (2)
Linda Wright (16)
Lawrence Yagoda (1)
Sam Yates (1)
Joseph Yuhasz (4)
Susan J. Zuk (8)
Dr. Paulina F. Zunino (5)
Susan Stanish Zurawsky (4)
Ms. Linda Zyroll (1)

PITTSBURGH CLO WOULD LIKE TO THANK AND RECOGNIZE THE FOLLOWING MEMBERS OF THE LEGACY LEGENDS SOCIETY:

Paul Block
Jim Gretz
Robert C. McCartney
Paul and Paula Palmer
Jeffrey Lawrence Pollock, Esq.
Sally Wade
Reverend Thomas A. Wagner

For more information on the Legacy Legends Planning Giving Program, please visit our website at PittsburghCLO.org

Pittsburgh CLO thanks the Ambassadors and Wine Tasting & Silent Auction Donors for their generous support of the CLO Performance Season and CLO's Arts, Education, and Community Engagement Initiatives.

To update your preferred donor listing, please contact the CLO Development Office at 412-281-3973, ext. 4.



LEGACY LEGENDS

CLO LEGACY LEGENDS recognizes the dedicated supporters who share a vision for Pittsburgh CLO's future. Their bequests and other planned gifts will have a profound and lasting impact on the artistic quality of the work you see on our stages.

If you would like to join us in building that future, please consider becoming a **CLO LEGACY LEGEND** by naming Pittsburgh CLO as a beneficiary of your will or trust, IRA or other retirement plan, life insurance policy, life income, or other planned gift. Designating Pittsburgh CLO is not a complicated process and can often be done with a phone call to your investment adviser.

If you have already named CLO in your estate plans – let us know and we will add your name to our CLO LEGACY LEGENDS and include you in special recognition and benefits. **For more information, please contact Wynne Fedele, Director of Development at wfedele@pittsburghCLO.org or call 412-281-3973 x232.**



GOT A GROUP? GET A DEAL! GROUPS OF 10+

Gather your friends, family or co-workers and discover the benefits and experience the theater together! It's easy to organize your group. We'll give you all the tools that you need to give your group the special treatment it deserves.

**ORDER ONLINE, Call 412-263-2560
OR GROUPS@PITTSBURGHCLO.ORG**



Pittsburgh's premier student-training program dedicated to celebrating talent and encouraging dreams!



**PITTSBURGHCLO.ORG/EDUCATION
412-281-2234**



YOUR LEADING ROLE AWAITS!

*Did you know that a ticket only covers half
of the expenses of a PCLO production?*

*Charles Shaughnessy, star of PETER PAN, with
donors at Supper with the Stars*

**Join our vibrant donor community and help us keep
the curtain rising!**

- **\$100 GIFT** – Gain priority access to readings of new musicals and recognition in PCLO show playbills.
- **\$250 GIFT** – Go behind-the-scenes with an invitation for two to attend a reception and dress rehearsal of a PCLO show and enjoy two drink vouchers for the Benedum Center bars.
- **\$1,500 GIFT** (and above) – We cordially invite you to join our fabulous **Gene Kelly Producer's Society**, gaining access to thrilling opportunities to meet, mingle, and dine with stars and befriend fellow musical theater lovers! Furthermore, enjoy premier benefits such as year-round access to PCLO's concierge department for all your ticket exchanges and purchases; free reserved parking during PCLO shows; complimentary tickets; and more.

**FOR MORE INFORMATION ABOUT DONOR BENEFITS AND
WAYS TO GIVE, VISIT PITTSBURGHCLO.ORG OR CALL OUR
DEVELOPMENT OFFICE AT 412-281-3973 EXT. 4**



Donors at Dress Rehearsal Reception



**JOIN
OUR DONOR
FAMILY TODAY!**

The tax deductible amount of your contribution is limited by the excess of your contribution over the value of certain benefits provided by CLO. For more information, visit pittsburghCLO.org. A copy of the official registration and financial information may be obtained from the Pennsylvania Department of State by calling toll free, within Pennsylvania, 1-800-732-0999. Registration does not imply endorsement.



SPECIAL THANKS

The Pittsburgh CLO Gallery of Heroes in-school program is sponsored by The National Endowment for the Arts, Highmark Blue Cross Blue Shield, The Massey Charitable Trust, The Pittsburgh Foundation, Allegheny Foundation, Healthcare Reality, Cooper-Siegel Family Foundation, Laurel Foundation and UPMC.

The Gene Kelly Awards are sponsored by The Michael J. Kara Family, Deloitte, the Gismondi Family Foundation, Highmark Blue Cross Blue Shield, PNC, and the CLO Ambassadors.

The Charles Gray Award for Special Achievement in Arts Education is underwritten by the Roy A. Hunt Foundation.

The CLO New Horizons is made possible in part by UPMC, Highmark Blue Cross Blue Shield, The Pittsburgh Foundation, Allegheny Foundation, Bellin/Coontz Family Giving Fund, Bender Consulting Services, Cooper-Siegel Family Foundation, PriceWaterhouseCoopers, and the Edith L. Trees Charitable Trust.

Stars of Pittsburgh CLO's Summer Series dine at the Grand Concourse Restaurant at Station Square.

The Official Hotel of Pittsburgh CLO.



The Official Airline of Pittsburgh CLO.



The Official Car Provider of Pittsburgh CLO.



EQT New Musicals Commissioning Fund

The purpose of the EQT New Musicals Commissioning Fund is to identify and commission writers both in Pittsburgh and across the country to write new musicals for the Pittsburgh CLO Summer Season, Cabaret and Gallery of Heroes program.

NOW THROUGH AUGUST 31ST!



SUMMER

STAYCATION

FREE ADMISSION

WITH ALLEGHENY COUNTY LIBRARY CARD & RESERVATION

RADPASS.ORG

**SEE OFFERS FROM SOME OF PITTSBURGH'S
FAVORITE ATTRACTIONS AND BOOK YOUR
STAYCATION PASS WITH THIS QR CODE:**



Untitled (Art Party)

● Fri., Sept. 20

● 7–10 p.m.

● Art, Cocktails,
Food, Music

Join us for our most anticipated
celebration of the year!

Carnegie Museum of Art



Scan the QR code
to buy your ticket or
donate now!

Presented by





PNC

2024-2025

BROADWAY PITTSBURGH™



H★MILTON

September 11-29, 2024



THERE'S LIFE AFTER ROMEO

Juliet

THE HIT BROADWAY MUSICAL

October 29-November 3, 2024



MJ

THE MUSICAL

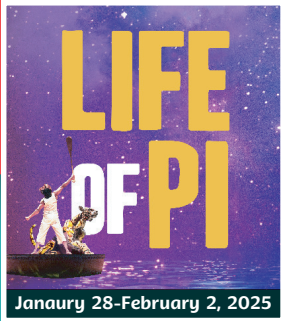
November 19-December 1, 2024



THE HIT BROADWAY MUSICAL

FUNNY GIRL

January 7-12, 2025



LIFE OF PI

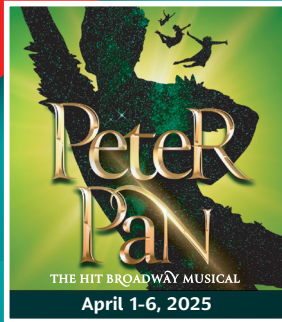
January 28-February 2, 2025



WINNER • 5 TONY AWARDS
INCLUDING
BEST MUSICAL

Kimberly Akimbo

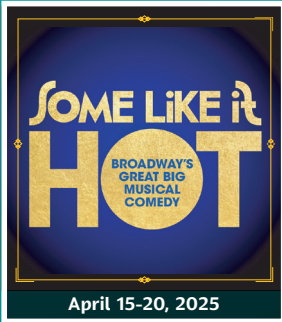
March 4-9, 2025



Peter Pan

THE HIT BROADWAY MUSICAL

April 1-6, 2025



SOME LIKE IT
HOT

BROADWAY'S
GREAT BIG
MUSICAL
COMEDY

April 15-20, 2025



Season Special

STOMP

October 18-19, 2024



Season Special

COME FROM AWAY

THE HIT BROADWAY MUSICAL

May 2-4, 2025

BENEDUM CENTER SEASON TICKETS 412-456-1390 GROUPS 10+ TICKETS 412-471-6930




WESTMORELAND
COUNTY | PA
More Memorable Moments
discoverwestmoreland.com



PITTSBURGH PLAYHOUSE

POINT PARK UNIVERSITY



From your Home to our House

We

Welcome

you to be entertained

Join us for the 2024-2025 season

Our **90th anniversary season** will feature internationally renowned artists, emerging theatre and dance performances, new and innovative audience experiences, and community events for the whole family.

ARTS ACCELERATOR

An innovative and interactive production, **ASCEND**

PLAYHOUSE PRESENTS

Featuring **Koresh Dance Company**, **Robin and Me: My Little Spark of Madness**, and the return of the **Pittsburgh Jazz Orchestra** Holiday Concert

COMMUNITY FEATURES

Experiences for local artists to connect with our community including the first annual **Fall Fest**

COPA THEATRE

Six mainstage productions performed by the Conservatory Theatre Company

COPA DANCE

Student performances by the Conservatory Dance Company

SCREENINGS

Global live screenings

To **SUBSCRIBE** to the 2024-2025 season and receive your exclusive benefits, visit **PittsburghPlayhouse.com** or call **412-392-8000**



The Director and Choreographer are members of the Stage Directors and Choreographers Society, a national theatrical labor union.



United Scenic Artists represents the designers and scenic painters for the American Theatre.



Backstage and Front of the House Employees are represented by the International Alliance of Theatrical Stage Employees (or I.A.T.S.E.).



The actors and stage managers employed in this production are members of Actors' Equity Association, the union of professional actors and stage managers in the United States.



The Musicians, Conductors, Music Preparation Personnel and Librarians employed in this production are members of the American Federation of Musicians of the United States and Canada.



Pittsburgh CLO receives state arts funding support through a grant from the Pennsylvania Council on the Arts, a state agency funded by the Commonwealth of Pennsylvania and the National Endowment for the Arts, a federal agency.



The Allegheny Regional Asset District, a county agency created to support and finance regional assets, including libraries, parks, cultural groups, sports and civic facilities, and to distribute tax relief to the 128 municipalities of Allegheny County.



The National Endowment for the Arts is a public agency dedicated to supporting excellence in the arts, both new and established; bringing the arts to all Americans; and providing leadership in arts education. Established by Congress in 1965 as an independent agency of the federal government, the Endowment is the nation's largest annual funder of the arts, bringing great art to all 50 states, including rural areas, inner cities, and military bases.



Pittsburgh CLO AMBASSADORS



BECOME A PITTSBURGH CLO AMBASSADOR TODAY!

The mission of the Pittsburgh CLO Ambassadors is to support and broaden the reach and diversity of the Pittsburgh CLO and to make musical theatre an active and accessible part of the lives of its members and others through the organization of and participation in a combination of theatrical, social, fundraising, volunteer, and educational events.



pittsburghCLO.org/Ambassadors



PITTSBURGH CLO STAFF

Mark Fleischer, *Executive Producer*

SALES & MARKETING

Sharon Goldstein.....*Director of Sales and Marketing*
 Alex Boyd.....*Patron Engagement Coordinator*
 Nicole Castelli.....*Patron Services and Ticketing Associate*
 Ryan Clark.....*Manager of Patron Services and Ticketing*
 Emma Cumberledge.....*Patron Services and Ticketing Associate*
 Charlene Flores.....*Group Sales Coordinator*
 Sidney Franczak.....*Marketing Manager*
 Kyle J. Malinosky.....*Marketing Coordinator*

DEVELOPMENT

Wynne Fedele.....*Director of Development*
 Liz Hoyt-Brown.....*Associate Director of Development*
 Brandon Marzke.....*Manager of Individual Giving*
 Tom McGee.....*Corporate and Foundation Relations Manager*
 Dayna Sowers.....*Board Liaison/Development Coordinator*
 Levi Von Iderstein.....*Development Data Coordinator*

FINANCE & ADMINISTRATION

Angela Langill.....*Director of Finance and Administration*
 Michael J. Cerchiaro.....*General Manager*
 Shelby Hinkle.....*Human Resources Manager*
 Kuei-O Lin.....*Accountant*
 Makenzie Shimko.....*Accounting & Human Resources Coordinator*
 Angie Staats.....*Seasonal Company Manager*
 Tom Stumme.....*Executive Assistant*
 Keturah Wasler.....*Office Manager*
 Amanda Wilcox.....*Controller*

EDUCATION

Jim Scriven.....*Director of Education*
 Patty Maloney.....*Principal*
 Brady D. Patsy.....*Community Engagement Manager*
 Aidan Quartana.....*Education Associate*
 Alexander Righetti.....*Education Operations Coordinator*

PRODUCTION/CONSTRUCTION CENTER

Billy Mason.....*Associate Producer*
 Anna Hanson.....*Producing Assistant*
 Macarena Subiabre.....*Production Manager*
 Michele Sullivan.....*Construction Center Business Manager*
 Michael Bannias.....*Key Carpenter*
 Dritan Cullaj.....*Key Carpenter*
 Fredrich Drenkow.....*Journeyman*
 Jordan Edkins.....*Technical Director/Foreman/CNC Operator*
 Tyler Kluck.....*Key Electrician*
 Andrew Kutrufis.....*Assistant Foreman*
 BJ Lipari.....*Scenic Charge*
 Timothy McCoy.....*Key Carpenter*
 Taylor Oberle.....*Journeyman*
 Evan Shoaf.....*Key Carpenter*
 Brendan Smith.....*Key Carpenter*

YOUNG FRANKENSTEIN PRODUCTION

Bob Bollman.....*Sound Designer*
 Tim Brady*.....*Production Stage Manager*
 Tomé Cousin.....*Intimacy Coordinator*
 Jordan Edkins.....*Shop Foreman*
 Joel Ferrell.....*Director, Choreographer*
 Lisa Ann Goldsmith.....*Dialect Coach*
 George Hoydich.....*Music Coordinator*
 Geoff Josselson.....*CASTING Director*
 Travis Klingler.....*Hair and Makeup Designer, Hair and Makeup Supervisor*
 Bob Lavallee.....*Scenic Designer*
 Kylee Loera.....*Video Designer*
 Mandie Patsy.....*Assistant to the Director/Choreographer*
 Nathan McWilliams.....*Lighting Shadow*
 Paul Miller.....*Lighting Designer*
 Robert Neumeyer.....*Music Director, Conductor Season Arranger, and Orchestrator*
 Benjamin Kent Pimental*.....*Assistant Stage Manager*
 Alexander Righetti.....*Costume Designer*
 Marty Savolskis.....*Props Coordinator*
 Stephen Smart.....*Hemsley Lighting Assistant*
 Camille Villalpando Rolla.....*Associate Music Director*

SUMMER 2024 INTERNS

Elizabeth Amen.....*Development*
 Luke Brahler.....*Marketing and Public Relations*
 Skyler Bruno.....*South Park Summer Camp*
 August Carter.....*Downtown Aftercare*
 Bailey DeBerry.....*Company Management*
 Colin Eccher.....*Marketing and Public Relations*
 Ariana Gant.....*Community Engagement*
 Abigail Gilman.....*Producing*
 Theo Kutsko.....*Music*
 Andre Lewis.....*Sound Design*
 Sophie McClung.....*Production Management*
 Rylie McCracken.....*Construction Center*
 Jenny Molyneaux.....*Downtown Education Assistant*
 Rachel Parsons.....*Downtown Education Assistant*
 Madeline Segar.....*Costume Design & Coordination*
 Sadie Shelkey.....*Graphic Design, Website, and Social Media*
 Jillian Thomas.....*Downtown Education Design*
 Phoenix Thomas.....*Stage Management*

Pittsburgh CLO
 CELEBRATING MUSICAL THEATER

TO ADVERTISE IN PROGRAM BOOKS:
 412-471-1497 | advertising@culturaldistrict.org

*Members of Actors' Equity Association, the union of professional actors and stage managers in the United States.



DELIVERING MORE

RESEARCH
EXPERTISE

FOR WOMEN

LOCATIONS

COMPASSION

For generations, UPMC Magee-Womens has been advancing women's health care. As one of the largest gynecologic programs in the country, we're delivering more research, innovative therapies, and treatments for women everywhere. *And, of course, we're still delivering more babies.*

With more than 160 locations, virtual care options, and online scheduling, access to renowned care has never been more convenient.

Visit [UPMC.com/DeliveringMore](https://www.upmc.com/DeliveringMore)

UPMC | MAGEE-WOMENS