



Pittsburgh
CLO

PNC
Spotlight Series

WEST SIDE STORY

SPONSORED BY:
JOAN CLARK DAVIS

#PCLOWestSideStory | @PittsburghCLO



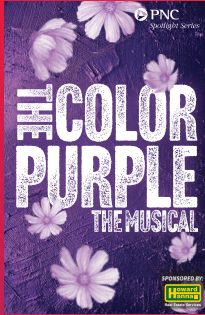
Pittsburgh CLO

CELEBRATING MUSICAL THEATER

THE ADVENTURE BEGINS SUMMER 2024 MUSICAL MEMORIES TO LAST A LIFETIME



May 17 - June 30
Greer Cabaret Theater



June 25 - 30
Benedum Center



July 9 - 14
Benedum Center



July 19 - Sept 1
Greer Cabaret Theater



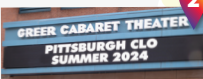
July 30 - Aug 4
Byham Theater

Pittsburgh CLO Is Removing Barriers For Families This Summer!

Learn more at PittsburghCLO.org/RemovingBarriers



3 SHOWS AT THE BENEDUM CENTER
237 7th St, Pittsburgh, PA 15222



2 SHOWS AT THE GREER CABARET THEATER
655 Penn Ave, Pittsburgh, PA 15222



1 SHOW AT THE BYHAM THEATER
101 6th St, Pittsburgh, PA 15222



CLO SHOW SHUTTLE

Say goodbye to the stress of traffic and parking! Board the Molly's Trolley at specific locations in surrounding suburbs of Pittsburgh! PCLO show tickets must be purchased in advance, and guests can then add-on a Trolley ticket for \$10.00 directly through Molly's Trolleys. PCLO SHOW SHUTTLE will only be offered on select show dates and times throughout the summer.



CLO FAMILY PASS

Families enjoy musical theater together without breaking the bank. For every Adult ticket purchased, up to four Child tickets can be added for just \$10 each. PCLO Family Pass tickets can be purchased in advance for all price zones for any show date and time of show offered.



CLO SHOW CARE

For parents torn between seeing a show and childcare, Pittsburgh CLO offers a solution. Young ones (3 - 12) cared for by PCLO Academy of Musical Theatre Faculty while parents watch the show. Limited spaces are available, so be sure to purchase tickets in advance and complete SHOW CARE registration in advance for this exclusive offer.

PITTSBURGH CLO.ORG  **412-456-6666**
Groups 10+ Save! Call 412-263-2560



All offerings available on select show dates and times.
Visit PittsburghCLO.org/RemovingBarriers for more information.
PCLO SHOW SHUTTLE in partnership with Audacy Radio, Molly's Trolleys and made possible by Richard King Mellon Foundation.
PCLO SHOW CARE & PCLO FAMILY PASS were made possible by Richard King Mellon Foundation.



PITTSBURGH CLO BOARD OF DIRECTORS

OFFICERS



Alexander Overstrom
CHAIRMAN OF THE BOARD



Edward T. Karlovich
PRESIDENT

HONORARY CHAIRMAN OF THE BOARD

Julie Andrews

CHAIRMAN OF THE BOARD

Alexander Overstrom

PRESIDENT

Edward T. Karlovich

VICE PRESIDENTS/ AUDIT

Richard J. Lipovich

VICE PRESIDENTS/ CABARET THEATER

John Dick

Meghan Barrera

Leah Ohodnicki

VICE PRESIDENT/ CLO AMBASSADORS

Christy Kobus

VICE PRESIDENT/ CONSTRUCTION CENTER & FACILITIES

Yarone Zober

VICE PRESIDENTS/ DEVELOPMENT

Mark J. Minnaugh

Joseph V. DiVito, Jr.

Laurie M. Mushinsky

VICE PRESIDENTS/ EDUCATION

Christine M. Kobus

George Gans

VICE PRESIDENTS/ FINANCE

Timothy K. Zimmerman

John A. Lemmex

VICE PRESIDENTS/ HUMAN RESOURCES

Lesley Evancho

Leslie S. Hyde

VICE PRESIDENTS/ MARKETING

Jon Galatis

VICE PRESIDENTS/PRODUCTION, NEW WORKS DEVELOPMENT & FUNDING

Peter J. Germain

Dennis Unkovic

Stephen S. Bloomberg

VICE PRESIDENTS/ NOMINATING

Scott F. Neill

Glenn D. Todd

VICE PRESIDENTS/ PLANNING

Luke A. Sizemore

VICE PRESIDENTS

Pritam Advani

Daniel I. Booker

Sherri Grask

Richard S. Hamilton

Laura Penrod Kronk

Robert C. McCartney

SECRETARY

Johanna G. O'Loughlin

TREASURER

Joseph V. DiVito, Jr.

EXECUTIVE DIRECTOR EMERITUS

Charles Gray

EXECUTIVE PRODUCER EMERITUS

Van Kaplan

CORPORATE COUNSEL

James M. Doerfler

CHAIRMAN OF THE BOARD EMERITUS

Helen Hanna Casey

William M. Lambert

George A. Davidson, Jr.

Joseph C. Guyaux

James E. Rohr

Daniel I. Booker

Louis D. Astorino

DIRECTORS

Joyce A. Bender

Tony Benevento

Patricia M. Blenko

Chris Brussalis

Jane Dixon

Clare Donahue

Gus Engel

Emilie Hammerstein

Vicki C. Henn

Paul Hennigan

Margaret Izzo

Brian Koble

Deedra Knaus

Diane B. Landers

Nicholas J. Liparulo

Margaret McLean

Timothy M. McVay

Christina P. O'Toole

Robin S. Randall

Michael Rizzo

Eric A. Schaffer

Gregg Schmidtetter

Arlene Sokolow

Helen Spalaris

LaShawnda Thomas

Joann L. Tissue

The Honorable

Debra Todd

Carla J. Vrsansky

Jake Wheatley, Jr.

ADVISORY BOARD

George Ator

Joan Bogut

Charles R. Fallon

Rosemarie R. Parse, Ph.D.

Melvin D. Rex

THEATER CONNECTS THE WORLD. SO DO WE.

Just like the Pittsburgh CLO, we're passionate about bringing people together, creating meaningful moments and inspiring new heights.

Delta is proud to be the official airline partner of the Pittsburgh CLO.



KEEP CLIMBING



DELTA





Welcome To The Summer!

We are delighted to welcome you to our 78th summer of musicals! Since 1946, Pittsburgh CLO has been dedicated to producing Broadway-caliber productions by Pittsburgh, for Pittsburgh, and in partnership with Pittsburgh. We started the season in the city of Philadelphia (*with LADY DAY AT EMERSON'S BAR & GRILL still playing thru June 30th at the Greer Cabaret*) and are now taking you to the streets of New York City! Thank you for joining us in the Benedum Center for this timeless and powerful story.

Since it's Broadway premiere in 1957 (and it's last appearance on the Pittsburgh CLO stage in 2008), **West Side Story** has captivated audiences with its unforgettable score by Leonard Bernstein and poignant lyrics by Stephen Sondheim. Inspired by Shakespeare's *Romeo and Juliet*, this beloved musical tells the tale of two star-crossed lovers amidst the rivalry between two teenage street gangs in 1950s New York. It's themes of love, overcoming prejudice, and the search for belonging while rooted in the past, still resonate with us today. I also want to thank Joan Davis for sponsoring this production and her commitment to ensuring classic American musicals remain part of the repertoire.

Looking for more musical memories this summer! Don't miss

- *Lady Day At Emerson's Bar & Grill* (Now – June 30, Greer Cabaret Theater)
- *THE COLOR PURPLE* (June 25 – 30, Benedum Center)
- *THE MUSIC MAN* (July 9 – 14, Benedum Center)
- *YOUNG FRANKENSTEIN* (July 19 – September 1), Greer Cabaret Theater)
- *SEUSSICAL* (July 30 – August 4, Byham Theater).

As we embark on these summer musical adventures, I ask for your help. Ticket sales cover only half of our production costs. Or another way to think about it is that your ticket only covers Act 1. That means donors are the ones who make Act 2 possible. If you are one of CLO's treasured donors, thank you for your generosity and your belief in the work we do. You make the second act possible. If you haven't had a chance to make your contribution, please consider doing so today. You will make a significant impact on CLO and our shared community. To join our donor family please visit PITTSBURGHCLO.ORG/SUPPORT.

Your support also expands access through our **REMOVING BARRIERS** programs: the **PCLO SHOW SHUTTLE**, **PCLO SHOW CARE**, and **PCLO FAMILY PASS**. Learn more at PITTSBURGHCLO.ORG/REMOVINGBARRIERS.

Now, get ready to fall in love all over again with **West Side Story!**



Mark Fleischer
Executive Producer

A great community is always striving for more.

At PNC, we're proud to call Pittsburgh home. And we're proud to stand with everyone who works every day to keep our community moving forward.

pnc.com



©2024 The PNC Financial Services Group, Inc. All rights reserved. PNC Bank, National Association.
Member FDIC
CON PDF 1221-018-1951005



 PNC BANK

**BRILLIANTLY
BORING
SINCE 1865SM**

Welcome once again to the Pittsburgh CLO's PNC Spotlight Series!

Since we can't sing or dance like the brilliant artists you'll see on stage, we're proud to be the premier sponsor of this exciting annual series. These all-new productions of timeless classics and modern masterpieces are guaranteed to thrill audiences from across our region and beyond.

We're equally proud of our long-standing relationship with Pittsburgh CLO. The PNC Spotlight Series and other CLO presentations are premier attractions to Pittsburgh's thriving Cultural District, drawing thousands of visitors to our city every year. Our support also helps to sustain CLO's Academy of Musical Theater for children, providing vital opportunities for young talent to thrive.

**Thank you for being here and being a part of it all.
Enjoy the show!**

Sincerely,

Louis R. Cestello
PNC
Head of Regional Presidents

Brilliantly Boring since 1865 is a service mark of The PNC Financial Services Group, Inc.

©2024 The PNC Financial Services Group, Inc. All rights reserved.

CON PDF 0524-057-2470001



We are proud to be a corporate sponsor of Pittsburgh CLO and their outstanding production of *West Side Story*.

ReedSmith

[reedsmith.com](https://www.reedsmith.com)

Driving progress
through partnership

JOAN CLARK DAVIS



Dear Friends and Fellow Musical Theater Lovers,

It is my pleasure to welcome you to Pittsburgh CLO's production of ***West Side Story***. I am so proud to be sponsoring this production. As a lifelong admirer of the classics of American musical theatre, ***West Side Story*** holds a special place in my heart and I believe it is one of the very best.

Since childhood, I have been enchanted by the magic of live theater. Pittsburgh CLO consistently excels in bringing these timeless stories to life, producing the classics the way they were meant to be seen and heard – with full orchestras, beautiful sets and costumes, and the best talent from Broadway, Pittsburgh and across the country. However, I am acutely aware of the significant and ever-growing costs involved in producing top-quality shows from the ground up. This awareness inspired me to support Pittsburgh CLO's work in a meaningful way.

Sponsoring this production is my way of giving back to an organization that has given me, and countless others, so much joy and inspiration over the years. I believe in the power of theatre and ***West Side Story***, with its compelling narrative, timeless themes, and unforgettable music, is a prime example of this transformative power.

Join me in support of this great organization that helps keep the spirit of musical theatre alive in our community, ensuring our families, friends, and neighbors can continue to experience the kind of classics we love so much.

Enjoy the show!

With best wishes,

A handwritten signature in black ink that reads "Joan Clark Davis". The script is fluid and cursive.

Joan Clark Davis
Pittsburgh CLO Donor
West Side Story Show Sponsor



**HEALTHCARE
REALTY**

**is proud to support
Pittsburgh CLO.**

We're the largest dedicated owner and operator of medical office buildings in the United States with \$148 million invested in over 1 million square feet across the great city of Pittsburgh. We take pride in investing in our local community.

Federal North MOB	191,610 sf
Allegheny Health Network Building	228,870 sf
Corporate One Office Park	116,260 sf
Highmark Penn Avenue Place	557,560 sf

Allegheny Health Network Building
Owned and Operated by Healthcare Realty



**HEALTHCARE
REALTY**

Corporate Headquarters

3310 West End Avenue, Suite 700
Nashville, Tennessee 37203
(615) 269-8175
www.healthcarerealty.com

Healthcare Realty Pittsburgh Office

30 isabella Street
Pittsburgh, PA 15214
(412) 321-2500

JUNE 11 - 16, 2024



MARK FLEISCHER, *Executive Producer*
Presents

WEST SIDE STORY

Based on a Conception of **JEROME ROBBINS**

BOOK BY **ARTHUR LAURENTS** MUSIC BY **LEONARD BERNSTEIN** LYRICS BY **STEPHEN SONDHEIM**

Entire Original Production Directed
and Choreographed by **JEROME ROBBINS**

Originally Produced on Broadway by **ROBERT E. GRIFFITH** and **HAROLD S. PRINCE**
and Arrangement with **RODGER L. STEVENS**

AT **THE BENEDUM CENTER FOR THE PERFORMING ARTS**

STARRING

SABINA COLLAZO • SPENCER LARUE
ADRIANA NEGRON • GIUSEPPE BAUSILIO • DAVIS WAYNE

WITH

GRACE ARNOLD • JENNIELLEN BEATTIE • KEN BOLDEN • BIANCA BULGARELLI • EMMANUEL COLOGNE
IXCHEL CUELLAR • JOY DEL VALLE • ROBERTO FACCHIN • MATHEW FEDOREK • HARRY FRANCIS
DAVID GRINDROD • BRANDON HALVORSEN • MILES MARMOLEJO • MAGGIE MCCOWN
MACY MCKOWN • J. ALEX NOBLE • MAILE C. ORAVITZ • COTY PERNO • ERIC RIVAS
RONAN RYAN • MAYA SANTIAGO • ALLAN SNYDER • BB STONE • DIXIE SUREWOOD
DREW TANABE • JOHN VISO • COLE N. ZIESER

SCENIC DESIGNER LIGHTING DESIGNER COSTUME DESIGNER SOUND DESIGNER HAIR AND MAKEUP DESIGNER
LEO MEYERS PAUL MILLER ROBERT FLETCHER CHRIS EVANS JEFF KNAGGS

VIDEO DESIGNER PRODUCTION STAGE MANAGER FIGHT DIRECTOR CASTING DIRECTOR
BRAD PETERSON RENÉE RIMLAND RANDY KOVITZ GEOFF JOSSELSON

ASSOCIATE DIRECTOR AND CHOREOGRAPHER

JACOB BRENT

MUSIC DIRECTOR

ANTHONY T. EDWARDS

DIRECTOR AND CHOREOGRAPHER

BAAYORK LEE

The Director is a member of the STAGE DIRECTORS AND CHOREOGRAPHERS SOCIETY, a national theatrical labor union.

Original choreography by **JEROME ROBBINS** for *Prologue, The Dance At The Gym, America, Cool, and Somewhere Ballet*.
Additional choreography for *Jet Song, Tonight (Quintet), The Rumble, I Feel Pretty, Gee, Officer Krupke* choreographed by **BAAYORK LEE**.

Costumes provided by **THE KANSAS CITY COSTUME COMPANY**.

WEST SIDE STORY is presented through special arrangement with Music Theatre International (MTI).

All authorized performance materials are also supplied by MTI.

www.mtishows.com

THE VIDEOTAPING OR MAKING OF ELECTRONIC OR OTHER AUDIO AND/OR VISUAL RECORDINGS OF THIS PRODUCTION OR DISTRIBUTING RECORDINGS ON ANY MEDIUM, INCLUDING THE INTERNET, IS STRICTLY PROHIBITED, A VIOLATION OF THE AUTHOR'S RIGHTS AND ACTIONABLE UNDER UNITED STATES COPYRIGHT LAW.

Pittsburgh CLO is a founding member of the National Alliance for Musical Theatre,
Independent Presenters Network and The Broadway League.



WEST SIDE STORY CAST

THE JETS

Riff, The Leader.....Davis Wayne*
 Tony, His Friend.....Spencer LaRue*
 Action.....Harry Francis*
 A-rab.....Brandon Halvorsen*
 Baby John.....Miles Marmolejo*
 Snowboy.....Ronan Ryan*
 Big Deal.....Mathew Fedorek*
 Diesel.....Cole N. Zieser*
 Anybody's.....Macy McKown*

THEIR GIRLS

Graziella.....Grace Arnold*
 Velma.....Maggie McCown*
 Minnie.....BB Stone*
 Pauline.....Maile C. Oravitz*

THE SHARKS

Bernardo, The Leader.....Giuseppe Bausilio*
 Maria, His Sister.....Sabina Collazo*
 Anita, His Girl.....Adriana Negron*
 Chino, His Friend.....Roberto Facchin*
 Pepe.....Emmanuel Cologne*
 Luis.....Eric Rivas*
 Toro.....Coty Perno*

THEIR GIRLS

Rosalia, "Somewhere Soloist".....Joy Del Valle*
 Consuelo.....Bianca Bulgarelli*
 Teresita.....Ixchel Cuellar*
 Francisca.....Maya Santiago*
 Margarita.....Jenniellen Beattie*

THE ADULTS

Doc.....Ken Bolden*
 Lieutenant Schrank.....Allan Snyder*
 Officer Krupke.....J. Alex Noble*
 Gladhand.....Dixie Surewood

ENSEMBLE

Grace Arnold*, Jenniellen Beattie*, Bianca Bulgarelli*, Ixchel Cuellar*,
 Joy Del Valle*, Maggie McCown*, Maile C. Oravitz*, Maya Santiago*, BB Stone*

DANCE CAPTAIN

David Grindrod*

LET'S GET SOCIAL!

Follow Us To Peek Behind The Curtain



@PittsburghCLO



@PittsburghCLO



@PittsburghCLO



@PittsburghCLO



WEST SIDE STORY CAST

UNDERSTUDIES

Rosalia - Jenniellen Beattie* | Maria - Joy Del Valle* | Riff - Mathew Fedorek*
Tony - Harry Francis* | Graziella, Velma, Minnie - Maile C. Oravitz* | Gladhand, Doc - J. Alex Noble*
Chino - Coty Perno* | Bernardo - Eric Rivas* | Anita - Maya Santiago* | Anybody's - BB Stone*
Officer Krupke, Lieutenant Schrank - Dixie Surewood

SWINGS

Jet Swing - David Grindrod* | Jet Swing - Drew Tanabe* | Shark Swing - John E. Viso*

*Members of the Actors' Equity Association, the union of professional actors and stage managers in the United States.

PITTSBURGH CLO ORCHESTRA

Anthony T. Edwards, *Conductor*
George Hoydich, *Musical Coordinator*

Reed 1.....	George Hoydich
Reed 2.....	Marybeth Malek
Reed 3.....	Jason May
Reed 4.....	Jim Germann
Reed 5.....	Linda Morton Fisher
Horn 1.....	Jon Carroll
Horn 2.....	Brooke Boehmer
Trumpet 1.....	Dave Wingenbach
Trumpet 2.....	Drew Fennell
Trumpet 3.....	Joe Herndon
Trombone 1.....	Bob Matchett
Trombone 2.....	Glenn Wayland
Violin.....	Rochelle Agnew, Joshua Huang, Anne Moskal, Rebecca Neukom, and Marybeth Schotting
Cello.....	Joe Bishkoff and Katya Janpoladyan
Bass.....	Jeff Mangone Sr.
Drums.....	RJ Heid
Percussion.....	Paul Evans
Keyboard.....	Catie Brown





Meet Our All-Star Cast



At #1 Cochran, our star-studded cast features 19 new car brands and thousands of preowned vehicles. Shop in store at any of our 33 locations or online with *ExpressWay* at Cochran.com.

#1 Cochran **GO 1 BETTER**
cochran.com

Official Vehicle Provider for Pittsburgh CLO



MUSICAL NUMBERS

ACT I

PROLOGUE: THE NEIGHBORHOOD - *Months Before*

Prologue.....Orchestra, Danced by Jets and Sharks

SCENE 1: THE STREET - 5:00 PM

Jet Song.....Riff, Baby John, Snowboy, and Jets

SCENE 2: A BACK YARD - 5:30 PM

Something's Coming.....Tony

SCENE 3: A BRIDAL SHOP - 6:00 PM

SCENE 4: A DANCE HALL - 10:00 PM

The Dance At The Gym.....Orchestra, Jets, and Sharks
Maria.....Tony

SCENE 5: A BACK ALLEYWAY - 11:00 PM

Tonight (Balcony Scene).....Maria and Tony
America.....Anita, Rosalia, and Shark Girls

SCENE 6: THE DRUGSTORE - *Midnight*

Cool.....Riff and Jets

SCENE 7: THE BRIDAL SHOP - *The Next Day* - 5:30 PM

One Hand, One Heart.....Tony and Maria

SCENE 8: THE NEIGHBORHOOD - 6:00 PM to 9:00 PM

Tonight (Quintet).....Jets, Sharks, Anita, Tony, Maria, Riff, and Bernardo

SCENE 9: UNDER THE HIGHWAY - 9:00 PM

The Rumble.....Riff, Bernardo, Jets, and Sharks

INTERMISSION

There will be one fifteen-minute intermission.

ACT II

SCENE 1: A BEDROOM IN AN APARTMENT - 9:15 PM

I Feel Pretty.....Maria and Shark Girls
Somewhere Ballet.....Company

SCENE 2: ANOTHER BACK ALLEY - 10:00 PM

Gee, Officer Krupke.....Jets

SCENE 3: THE BEDROOM IN THE APARTMENT - 11:30 PM

A Boy Like That / I Have A Love.....Maria and Anita

SCENE 4: THE DRUGSTORE - 11:40 PM

The Taunting.....Anita and Jets

SCENE 5: THE CELLAR - 11:50 PM

SCENE 6: THE STREET - *Midnight*

Finale.....Maria and Tony

SETTING:

The action takes place on the West Side of New York City during the last days of summer.



WHO'S WHO



SABINA
COLLAZO



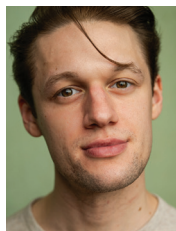
SPENCER
LARUE



ADRIANA
NEGRON



GIUSEPPE
BAUSILIO



DAVIS
WAYNE



GRACE
ARNOLD



JENNIELLEN
BEATTIE



KEN
BOLDEN



BIANCA
BULGARELLI



EMMANUEL
COLOGNE



IXCHEL
CUELLAR



JOY
DEL VALLE



ROBERTO
FACCHIN



MATHEW
FEDOREK



WHO'S WHO



HARRY
FRANCIS



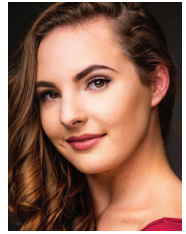
DAVID
GRINDROD



BRANDON
HALVORSEN



MILES
MARMOLEJO



MAGGIE
MCCOWN



MACY
MCKOWN



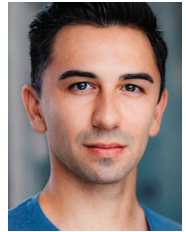
J. ALEX
NOBLE



MAILE C.
ORAVITZ



COTY
PERNO



ERIC
RIVAS



RONAN
RYAN



MAYA
SANTIAGO



ALLAN
SNYDER



BB
STONE



DIXIE
SUREWOOD



DREW
TANABE



JOHN
VISO



COLE N.
ZIESER

Hey Pittsburgh, wish you were here? You can be.

Fly beyond Pittsburgh, into the beauty of Iceland.

Learn more at flypittsburgh.com/booknow.



PITTSBURGH
INTERNATIONAL AIRPORT



WHO'S WHO - CAST

SABINA COLLAZO (*Maria*) Pittsburgh CLO debut! A native of Puerto Rico, Sabina is thrilled to reprise this role that is so close to her heart. Other credits include Anne in Barrington Stage's acclaimed production of *A Little Night Music*, *West Side Story* at Milwaukee Rep (Maria), and *On Your Feet!* at Gateway Playhouse (Rebecca u/s). University of Michigan Musical Theater. Thanks to my manager Steve and CESD. Mucho amor a mi familia. Para mi isla.

SPENCER LARUE (*Tony*) is thrilled to be making his Pittsburgh CLO debut in one of his favorite musicals. Broadway: *Harry Potter and the Cursed Child* (James Potter Jr/Sr/Cedric Diggory). Select Regional: *The Sound of Music* (Rolf, Ogunquit Playhouse), *Disney's Newsies* (Romeo, Broadway at Music Circus), *Disaster!* w/Seth Rudetsky (ensemble, CRT). Other: *Sweeney Todd* (Toby, UofM). Graduate of The University of Michigan Musical Theatre. Huge thank you to his Parents, Griffin, Matt, and the DGRW team for always believing in him. For Sam.

ADRIANA NEGRON (*Anita*) is thrilled to be returning to Pittsburgh CLO! Most recently, Adriana was touring the country with the Broadway National Tour of *Disney's Aladdin!* Other notable credits include: *The Prom* 1st National Tour (Ensemble, Alyssa Greene Cover), *CATS* (Rumpleteazer), *West Side Story* Tokyo (Anita), and *A Chorus Line* - Shanghai Premiere/ Pittsburgh CLO (Diana Morales). Adriana has a BFA in Musical Theater from Montclair State University and would like to thank her family and her husband Coldin for their constant love and support! Always reach for the stars! | Instagram: @_adriananegron

GIUSEPPE BAUSILIO (*Bernardo*) is excited to be making his Pittsburgh CLO debut! Broadway: Billy in *Billy Elliot*, Race and Davey u/s in *Disney's Newsies*, *Disney's Aladdin*, *CATS*, *Hello, Dolly!*, Samuel Seabury and Charles Lee in *Hamilton*. Regional: *Dear World* at NYCC Encores, *Spring Awakening*. TV: Alfie in *the Next Step*. Film: *Ode to Passion*, *Tango on the Balcony*. Thank you to my parents, my family, and friends for always supporting me through my great and tough times! | @giuseppebausilio

DAVIS WAYNE (*Riff*) is thrilled to be returning to Pittsburgh CLO for his 12th show! He was last seen in *Natasha, Pierre and the Great Comet of 1812*. Favorite credits, Broadway: *Hadestown* and *New York, New York!* Tours: *Hello, Dolly!* Regional Riff in *Jerome Robbins' Broadway* (Muny), Joey in Pittsburgh CLO's production

of *Sister Act*, as well as other shows at The Muny, Pioneer theatre, and North Shore. Love to everyone from the front of the house to the back. | @davis_wayne

GRACE ARNOLD (*Graziella, Ensemble*) is thrilled to be a part of the cast of *West Side Story!* Previous credits include Val in *A Chorus Line* (International Tour), *Guys & Dolls* (Pittsburgh CLO), Val in *A Chorus Line* (Pittsburgh CLO), *A Silly Girl in Disney's Beauty and the Beast* (City Springs Theatre Company), Tantomile in *CATS* (City Springs Theatre Company), Val in *A Chorus Line* (City Springs Theatre Company), and Assistant choreographer to Baayork Lee on *A Chorus Line* (Dr. Phillips Center). She is so grateful to the cast and the creative team for the opportunity to work on such a beautiful show. Much love to her family and friends and Glory to God always. UA class of 2020, Roll Tide! | @m.grace.arnold

JENNIELLEN BEATTIE she/her (*Margarita, Ensemble, u/s Rosalia*) is so excited to be making her Pittsburgh CLO debut! Point Park MT/Dance '22. Special thanks to my husband, Connor, and my mom for their unconditional support! | @jennielLENbeattie

KEN BOLDEN (*Doc*) is pleased to be making his Pittsburgh CLO debut. Recent: *What The Constitution Means To Me* (Legionnaire/Mike) at City Theatre, *A Raisin in the Sun* (Karl Lindner) at The Public, *Orphans* (Harold) at Aftershock, *Endgame* (Nagg) At PICT. Film: *Sorority Row*, *Little Evil*, *Marshall*, *Judas and the Black Messiah*; *Fathers and Daughters*, and *This is a Love Story*. TV: *Gone*, *The Mayor of Kingstown*, and *Archive 81*. Training: London Academy of Music & Dramatic Arts.

BIANCA BULGARELLI (*Consuelo, Ensemble*) is thrilled to be making her Pittsburgh CLO debut in *West Side Story*. Bianca grew up in Los Angeles, trained at the University of Oklahoma, and is currently based in New York City. Recent credits include *Evita* at A.R.T. and Shakespeare Theatre Co., *A Chorus Line* at Pennsylvania Shakespeare Theatre, *White Christmas* at Springer Opera House, and *Carousel* at Riverside Theatre. Special thanks to Ellery, Eric, and Flynn at The Mine!

EMMANUEL COLOGNE (*Pepe*) is delighted to make his Pittsburgh CLO debut! International Tours: Paul San Marco in *A Chorus Line* (Tokyo). Regional: Sonny in *In the Heights*, Coricopat in *CATS*, Paul San Marco in *A Chorus Line*, *Disney's Beauty and the Beast*, and *Spamalot* (City



WHO'S WHO - CAST

Emmanuel Cologne Bio Continued...

Springs Theatre Company). Proud graduate of Brenau University. To thine own self be true. | IG: @theemmanuelcologne

IXCHEL CUELLAR (*Teresita, Ensemble*) Tenth show at the Benedum! Broadway/National Tours: *Mean Girls, Finding Neverland, Hamilton* (& Peggy Co). Regional: Fulton Theatre, Sacramento Music Circus, and Pittsburgh CLO. Penn State Alum! Love to DGRW and my support system. | @itsixchel

JOY DEL VALLE (*Rosalia, Somewhere Featured Soloist, Ensemble, u/s Maria*) is thrilled to be making her Pittsburgh CLO debut! Select credits: Tours: International Tour of *West Side Story* (Rosalia, Maria alternate). Regional: Maria in *West Side Story* (Phoenix Theatre Company), *West Side Story* (Lyric Opera of Chicago), *Holiday Inn* (Arts Center Coastal Carolina), *Rodgers and Hammerstein's Cinderella* (Phoenix Theater Company), *Fiddler on the Roof* (Goodspeed), *Annie Get Your Gun* (Goodspeed), *In the Heights* (Beck Center), *A Christmas Carol* (Hartford Stage). Baldwin Wallace MT. | joydelvalle @joyrdelvalle

ROBERTO FACCHIN (*Chino*) After training at the Dramatic Arts School of Malaga, Roberto made his debut in the Antonio Banderas-Baayork Lee production of *A Chorus Line* playing the role of Mark and understudying Paul. In 2022 he moved to New York City to achieve his ambitions as a performer and he was cast as Alonzo in the Original Broadway production of *CATS* for Royal Caribbean. He came back to New York to collaborate with the Ballet company Covenant Ballet Theatre as a guest dancer and after he joined the ballet company Ballets With a Twist where he worked as a corps de Ballet and soloist dancer. His last work in Musical Theatre was the Broadway show *Anastasia* at White plains performing Arts Center as ensemble/Von Rothbart. Recently he joined the Jack Cole dance company, a project and company that preserves and honors the work of "the father of theatrical jazz" Jack Cole.

MATHEW FEDOREK (*Big Deal, u/s Riff*) A proud Pittsburgh native and Penn State Alum. Previous CLO credits include *Kinky Boots, A Chorus Line, Guys & Dolls, Anything Goes*, and more! Regionally, Mathew has performed with Arizona Theatre Company, KC Starlight, Penn State Centre Stage, and WV Public Theatre. Thanks to Pittsburgh CLO for welcoming him home. All his love to the pack, and Jack! | @mathew.fedorek

HARRY FRANCIS (*Action, u/s Tony*) London/West End: Neleus in *Disney and Cameron Mackintosh's Mary Poppins* (also Australia), Theo/Lewis in *Pippin*, Tom Thumb in *Barnum*, *The Book of Mormon*, Mungojerrie in *CATS*, Mark in *A Chorus Line*, and U/S Boq in *Wicked*. UK/International Tours: Mr. Mistoffelees in *CATS*, Baby John in *West Side Story*, IQ in *Hairspray*, *Matthew Bourne's Edward Scissorhands*. UK Regional: *Amadeus, Fiddler on the Roof, Chicago*, and the title role in *Peter Pan*. USA credits: Mr. Mistoffelees in *CATS*, *Elvis - A Musical Revolution*, and Joe Pesci in *Jersey Boys*. | @HarryRFrancis

DAVID GRINDROD (*Jet Swing, Dance Captain, Assistant to the Director/Choreographer*) began his professional career when Baayork Lee cast him as Mark on the National Tour of *A Chorus Line*. He has since reprised his role all over the country including here at Pittsburgh CLO and at New York City Center. For over a decade he's worked alongside Baayork on productions such as The China Premiere of *A Chorus Line*, *South Pacific*, *CATS*, and *Disney's Beauty and the Beast*. | @david.grin

BRANDON HALVORSEN (*A-rab*) Pittsburgh CLO debut! Select regional credits: *Cabaret* (The Old Globe), *Nice Work...Get It* (CVRep), *An American in Paris* (Musical Theatre West), *Disney's Newsies* (La Mirada, 5-Star Theatricals), *The LEX*, PCPA, *Hairspray* (The MUNY), *Mamma Mia!*, *Disney's Beauty and the Beast* (La Mirada). TV/Film: *Bite Size Halloween* ep. *Ride Or Die* (Hulu), 100+ award-winning film *Koreatown Ghost Story* with Margaret Cho, *Binary*, *Where No One Lives*, and *Bitchy*. BFA Music Theatre from Elon University. Big thanks to Mom, Dad, Justin, and team at Avalon! | Instagram: @brandostar

MILES MARMOLEJO (*Baby John*) is excited to be making his Pittsburgh CLO debut! Favorite roles include: *An American in Paris* (Jerry Mulligan) BAHBT; *West Side Story* (Baby John) A.D.Players; *Footloose* (Ren); *Parade* (Frankie Epps) (in concert). TUTS *Disney and Cameron Mackintosh's Mary Poppins* (Neleus); *RENT* (Ensemble); *Elf* (Souvlaki Cart Guy); *Bonnie and Clyde* (Archie); TUTS/Miller - *All Shook Up* (ensemble); *Yankee Doodle Dandy* (Young George). Film/Commercial: *Looper* (Young Joe), HEB/Astros, Verizon and *Laura Star* (voice of Paul). Love to my family

MAGGIE MCCOWN (*Velma, Ensemble*) is thrilled to be returning Pittsburgh CLO! Tour: Vicki u/s Cassie in *A Chorus Line* (International



WHO'S WHO - CAST

Tokyo Tour) Regional credits include: Babette in *Disney's Beauty and the Beast*, Bombalurina in *CATS*, Rhoda u/s Judy in *White Christmas*, Brenda in *Hairspray*, Swing in *A Chorus Line*, *Mamma Mia!* (City Springs), Tricia u/s Cassie in *A Chorus Line* (Pittsburgh CLO), Magenta in *Rocky Horror*, Gingy in *Shrek* (Maine State), *Rodgers and Hammerstein's Cinderella* (Fulton Theatre), *Memphis* (Red Mountain), *Disney's Newsies*, *Mamma Mia!*, *West Side Story* (SSMT). Film: *A Jazzman's Blues* (Tyler Perry and Debbie Allen Netflix). Graduate of The University of Alabama. All my gratitude to Baayork, Jacob, David, and my amazing family. | Insta: @maggie-mccown TT: @xoxomaggiemc Web: maggiemccown.com

MACY MCKOWN (*Anybody's*) is thrilled to be making her Pittsburgh CLO debut! She is a 2X Silver Medalist at the IDO World Tap Dance Championships in Riesa, Germany, and a member of the USA Tap Team. Macy has performed at The Muny, Music Theatre Wichita, Casa Mañana, and Lyric Theatre of Oklahoma. She was named the winner of Broadway World's Next on Stage: Dance Edition and recently, competed on season 18 of FOX's *So You Think You Can Dance*. Go Blue! Ephesians 3:20 | @macymck

J. ALEX NOBLE (*Officer Krupke*, *u/s Gladhand*, *u/s Doc*) is thrilled to be back on stage with Pittsburgh CLO. His previous Pittsburgh CLO credits include Avram in *Fiddler on the Roof*, Harold Ickes in *Annie*, Finance Man 1 in *Sunset Boulevard*, Bunsen in *Disney's Newsies*, Franz in *The Sound of Music*, and Harry the Horse in *Guys & Dolls*. He also originated the role of Jameson in Pittsburgh CLO's *The Double Threat Trio*. He is a graduate of Point Park University and has been a member of Actors' Equity since 2012.

MAILE C. ORAVITZ (*Pauline*, *Ensemble*, *u/s Graziella*, *u/s Velma*, *u/s Minnie*) is a Pittsburgh native based in NYC studying at The Institute for American Musical Theatre. Training: Pittsburgh CLO Academy, PBT's Pre-Professional/Student programs, Pittsburgh Ballet House. Summer programs: ABT Collegiate/SI/YDSW, Open World Dance Foundation, The Chautauqua Institute, Charlotte Ballet, Allegro Ballet, Exactitude Dance, PPU's Intl Summer Dance. Regional: *A Chorus Line*, *A Broadway Musical Celebration*, *The Wizard of Oz* (Pittsburgh CLO). Industry experience: *Man in a Raggedy Bathrobe* reading, *The Cher Show* National Tour pre-production (IAMT). Beyond grateful to work with the cast/creatives on this timeless classic!

COTY PERNO (*Toro*, *u/s Chino*) is pumped to be joining Pittsburgh CLO this season! Regional: *Anything Goes* (Broadway Method Academy/BRT). Sending love and thanks to the family, friends, and all the educators along the way. CCM MT '25. Lets do this! | @cotyperno

ERIC RIVAS (*Luis*, *u/s Bernardo*) is making his Pittsburgh CLO debut! Currently a Resident Cast Member in *Disney's Beauty and the Beast: Live on Stage!* at WDW. Favorite Regional credits: *Something Rotten!* (MSMT/FULTON), *CATS* (City Springs Theatre Company), *Sweet Charity* (Maltz Jupiter Theatre), *Spamalot* (Northern Stage) *Dames at Sea* (Theatre Zone), *On the Town* (Gateway Playhouse), *West Side Story* (Signature Theatre), *A Chorus Line* (New Bedford Festival Theatre), *Hello, Dolly!* (Cohoes Music Hall), *42nd Street* (Jersey Shore Ent.), *Cabaret* (Palace Theatre). Showboy in *Las Vegas's JUBILEE!* at Bally's. Dancer/Singer for Disney Cruise Lines, Dance Captain/Aerial Captain for Norwegian Cruise Lines, Holland America Line. Alumni of The School at Jacob's Pillow. Bachelor's Degree of Science in Filmmaking. Proud member of Actors Equity. | @ericrivastaps

RONAN RYAN (*Snowboy*) is thrilled to be making his Pittsburgh CLO debut! A senior Dance BFA major in Ballet at Point Park University, Ronan has appeared in works by George Balanchine, Justin Peck and Al Blackstone, among others. Theater credits include: *A Chorus Line* (Mark, STAGES St. Louis), *Disney's Newsies* (Ike/Morris Delancey, STAGES St. Louis), and 12 productions at The Muny, including Swing roles in *West Side Story* and *Sister Act*. Thanks to Mom, Dad, Dr. Carter, COCA, and Pittsburgh CLO cast and crew.

MAYA SANTIAGO (*Francisca*, *Ensemble*, *u/s Anita*) National Tour: *On Your Feet!* (Gloria cover, Swing). Off-Broadway: *Shooting Star*. Regional: Sandy in *Grease* (Pittsburgh Musical Theatre), *Disney's AIDA* (STAGES St. Louis). Television: *Sprung* (Amazon Prime TV) and *Macy's Thanksgiving Day Parade* (NBC). Staten Island native. Proud Filipino-Puerto Rican. Endless thanks to The Mine Agency, Point Park University, and her mom for all her wisdom and unconditional love. All glory belongs to God himself! | @mayalsantiago

ALLAN SNYDER (Lieutenant *Schrank*) is thrilled to return to Pittsburgh CLO this summer. Previous Pittsburgh CLO credits include *Anything Goes*, *Titanic*, *The 39 Steps*, and *A Musical Christmas Carol*. Broadway/



WHO'S WHO - CAST

Allan Snyder Bio Continued...

Off-Bway/Tour: *The Phantom of the Opera*, *Les Misérables*, *The Fantasticks*. Pittsburgh: Pittsburgh Public, PICT Classic Theatre, Front Porch Theatricals, Lincoln Park PAC. Thank you Kate for supporting my theatre habit!

BB STONE (*Minnie, Ensemble, u/s Anybody's*) is thrilled to be making her Pittsburgh CLO debut! Regional: *The Cher Show* (Ogunquit Playhouse, The Gateway), *Dirty Rotten Scoundrels* (Maltz Jupiter Theatre), *Disney's Newsies* (The Gateway), *All Shook Up*, *South Pacific*, *Mamma Mia!* (Flat Rock Playhouse). BB is a graduate of the Ann Lacy School of American Dance & Entertainment at Oklahoma City University. Endless love and gratitude to her family, friends, and agents at The Mine. | @bbstone

DIXIE SUREWOOD (*Gladhand, u/s Officer Krupke, u/s Lieutenant Schrank*) is thrilled to be making her Pittsburgh CLO debut the summer! Some local credits include *Something Rotten!* (Nostradamus), *The Rocky Horror Show* (Frank-N-Furter), and *The 25th Annual Putman County Spelling Bee* (Barfee). Dixie has also been performing professionally in drag for the past 10 years. Her drag achievements include National Comedy Queen 2018, Drag Queen of the Year Pageant and appropriately been given the title of "Pittsburgh's Funny Girl". She was most recently voted Pittsburgh's Best Drag Queen! | INSTAGRAM: @Dixiesurewood

DREW TANABE (*Jet Swing*) is thrilled to be performing here at Pittsburgh CLO. He recently performed in the NYC workshop of *Anne of Green Gables* as Fred Wright. Other fun credits include *Hoagy Carmichael's Stardust Road* (York Theatre) and *An American in Paris* (Drury Lane). Huge thanks to Matt & DGRW, Baayork, and Davey baby. Gaman.

JOHN VISO (*Shark Swing*) Pittsburgh CLO debut! NYC based performer born and raised in Kansas City. Credits: *My Fair Lady* (National Tour), *Cabaret* (The Old Globe), *Cabaret* (Asolo Rep), MSC Cruises (RWS Entertainment), *A Chorus Line*, *Disney's Newsies* (The Lexington Theatre Co.), *Anything Goes*, *Disney's Newsies* (Porthouse Theatre), *Bright Star* (Phoenix Theatre). Education: BFA Musical Theatre from Ball State University. www.johnviso.com | @visoinlights

COLE ZIESER (*Diesel*) feels so blessed to be part of this incredible company! Most recently seen in *Disney's Newsies* at Theatre Under the Stars (Race, Jack Kelly U/S). Performance/choreography credits include *Annie*, *Baseball*

Saved Us, *West Side Story* (RSP) at The 5th Avenue Theatre, and *25th Annual...Spelling Bee* at Village Theatre. Love to Jaedyn and Dipper, to my family, and many thanks to my agents at blocNYC. | @colezieser

WHO'S WHO - CREATIVE

BAAYORK LEE (*Director, Choreographer*) has performed in a dozen original Broadway shows. She created the role of Connie in *A Chorus Line* while continuing the legacy of Michael Bennett directing companies around the world, most recently Antonio Banderas company in Spain. She has directed *King and I*, *South Pacific*, *Cinderella* (R&H), *Porgy and Bess*, *Carmen Jones*, *Jesus Christ Superstar*, *Barnum*, *Gypsy* and others. She also directed the 2021 *Wicked in Concert* for PBS. Her choreography credits include: *Miss Saigon*, *Mack and Mabel* and for Arena Stage in Washington, DC, *Animal Crackers*, *South Pacific* (Helen Hayes nom2021), *Wicked in Concert* 2021 for PBS, *Coconuts*, and *Camelot*. Lee founded National Asian Artists Project (NAAP) a 501 (c) 3 Nonprofit. Her vision includes educating, cultivating, and stimulating audiences and artists of Asian descent through the many outreach programs the company offers. She has been the recipient of numerous awards for her work, including the Isabelle Stevens Tony Award, Paul Robeson Award from Actors Equity Association, the Asian Woman Warrior Award for Lifetime Achievement from Columbia College, Asian Pacific American Heritage Association Achievement In Arts Award, the Dynamic Achiever Award from OCA Westchester. Chen Dance Center Artist Award, Arena Stage American Artist Award, and Actors Fund for Outstanding Contribution to the World of Dance.

ANTHONY T. EDWARDS (*Music Director, Conductor*) Pittsburgh: debut. Regional Kansas City: Resident Musical Director for Starlight Theatre, Coterie Theatre, Unicorn Theatre, All Souls Unitarian Universalist Church, and Eventology. In addition, Mr. Edwards has appeared as Music Director with New Theatre, Quality Hill Playhouse, The Heartland Men's Chorus, Epic Entertainment, Bar Natasha, Theatre in the Park, Late Night Theatre, Musical Theatre Heritage. Additional Regional: Denver Center for the Performing Arts (Denver, CO), Virginia Stage Company (Norfolk, VA), American Theatre (Rockford, IL) Red Barn Theatre, (Key West, FL), Waterfront Playhouse (Key West, FL). New York: New Victory Theatre.



WHO'S WHO - CREATIVE

Education: BM, Belmont University; Graduate Studies, University of Missouri-Kansas City. Mr. Edwards is Adjunct Faculty for University of Missouri, Kansas City Conservatory of Music and is a Kurzweil-endorsed artist. He is a Board Member and Secretary for the AIDS Service Foundation of Kansas City.

JACOB BRENT (*Associate Director, Associate Choreographer*) is excited to be returning to Pittsburgh CLO with *West Side Story*. He most recently worked with Baayork Lee on a new production of *CATS* at City Springs Theater Company. He is best known for his portrayal of Mr. Mistoffelees in the Broadway, London and filmed stage productions of *CATS* being the only performer to have appeared in all three. Jacob currently serves as a musical theater professor at Elon University. |@jacobbrentsagram

PAUL MILLER (*Lighting Designer*) 8 Seasons at Pittsburgh CLO. Internationally, Paul's work has been seen on stage at the Stratford Festival, London's West End, Vienna, Teatro alla Scala (Milan), South Africa, China, Manila, Iceland and São Paulo. On Broadway, he has designed 5 musicals and been the Associate/Assistant on 22 others. Notable Off-Broadway favorites include: *Desperate Measures, Clinton!, Pageant, Vanities - the Musical, Waiting for Godot, Nunsense, Encores!* (9 shows). National Tours: *Hairspray, Elf, Wizard of Oz, Sweeney Todd, The Producers, RENT, Shrek*. Regional: Arizona Theatre Company, The Old Globe, Dallas Theater Center, Chicago Shakespeare, Idaho Shakespeare, Asolo Rep, ACT, Cleveland Playhouse, Pasadena Playhouse, Goodspeed, and others. Television: *Evil* (CBS & Paramount+), *Live from Lincoln Center*, more than 20 Netflix specials, and the internationally televised *New Year's Eve Celebration from Times Square* (for 25 years).

CHRIS EVANS (*Sound Designer*) is a graduate of Carnegie Mellon University (Drama '83). He has been teaching the Advanced Sound System Design course in the School of Drama for the past 8 years and also advises student sound designers who are assigned to musical productions. He has served as the House Sound Engineer at the Benedum Center in Pittsburgh, PA since 1987. During this time he has also designed and engineered shows for the Pittsburgh Opera, Pittsburgh Ballet and Pittsburgh CLO. In addition to his professional career in Pittsburgh, he has lectured for the Broadway Sound Master Class Series in New York City and designed sound for the Jimmy Awards at the Minskoff Theater.

JEFF KNAGGS (*Hair and Makeup Designer*) is a proud pug daddy and has been working in theatre for 25 years. After designing the 25th Anniversary *Mamma Mia!* tour, he has returned to Royal Caribbean to design four shows, including *The Wizard of Oz*. For The Engeman Theatre, he has designed *Beautiful, Beauty and the Beast, Jersey Boys, and Margaritaville*. For NCL he has designed *Kinky Boots, Footloose, Six, and After Midnight*. Royal Caribbean: *Hairspray, Flight: Dare to Dream. The Silk Road, Showgirl!, The Effectors*. Pittsburgh CLO: 2017, 2018, 2019, 2022, and 2023 Seasons. TUTS: *Memphis, Dreamgirls, Into the Woods, How to Succeed..., The Rocky Horror Show, Million Dollar Quartet, Heathers, Mary Poppins, Sweet Potato Queens, Bonnie & Clyde, A Christmas Story, The Music Man*. Theatre Aspen: *Beautiful*. Regional: *Mamma Mia!, Peepshow, Young Frankenstein, Disney's The Little Mermaid, Dancing With The Stars, America's Got Talent, and Into the Woods* at The Hollywood Bowl.

BRAD PETERSON (*Projection Designer*) is a New York-based video and projection designer. Previously with Pittsburgh CLO: *Anything Goes* and *The Sound of Music*. Select designs include *Corruption* (Lincoln Center Theatre); *A Sign of the Times* (Off-Broadway); *CATS* (Broadway Revival); *Fish in the Dark* (Broadway); *Broadway Bounty Hunter* (Off-Broadway); *If I Forget* (Roundabout); *Sing Street* (The Huntington); *El Sitt* (Riyadh Festival, Saudi Arabia); *Lion... Witch...Wardrobe, Carousel, and A Little Night Music* (Stratford Festival); *Actually We're...* (Off-Broadway); and *Red Roses Green Gold* (Off-Broadway). |bradpetersonsdesign.com

RANDY KOVITZ (*Fight Designer*) has been staging fights for over four decades, working on and Off Broadway and in regional theater, film and TV. Recent credits For the PCLO include *AIDA, Disney's Newsies, Oklahoma!* and, *Natasha, Pierre & the Great Comet* at the Pittsburgh CLO, Past credits include Sir Peter Hall's *Midsummer Night's Dream*, four seasons at the Tony Award-winning Utah Shakespeare Festival and the films *The Ballad of the Sad Café* with Vanessa Redgrave, *The Addams Family* — as fencing double for Raul Julia — and the Pittsburgh-made *Unsinkable*.

GEOFF JOSSELSO (*Casting Director*) is a New York-based casting directors, handling productions for theatre, film and television. Recent work includes productions for Arena Stage, Actors Theatre of Louisville, Baltimore Center Stage, Cape Playhouse, Denver Center,



WHO'S WHO - CREATIVE

Geoff Josselson Bio Continued...

Ensemble Studio Theatre, The Irish Repertory Theatre, Merrimack Rep, Oregon Shakespeare Festival, Paper Mill Playhouse, Pittsburgh CLO, Pittsburgh Public Theatre, Repertory Theatre of St. Louis, Round House Theatre, Seattle Repertory Theatre, Theaterworks Hartford, Weston Playhouse.

ARTHUR LAURENTS (*Book*) An award-winning playwright, screenwriter, librettist, director and producer, Arthur Laurents has been responsible for creating the librettos of many Broadway shows including *Gypsy*, *Anyone Can Whistle*, *Do I Hear A Waltz?*, *Hallelujah*, *Baby!* and *Nick & Nora*. He wrote the screenplays for *The Snake Pit*, *Anna Lucasta*, *Anastasia*, *Bonjour Tristesse*, *The Way We Were* and *The Turning Point*. He also wrote the plays *Home Of The Brave*, *The Time Of The Cuckoo* and *A Clearing in The Woods*. He directed *I Can Get It For You Wholesale*, *Anyone Can Whistle*, *Gypsy*, *La Cage Aux Folles*, *Birds Of Paradise* and *Nick & Nora*.

LEONARD BERNSTEIN (*Music*) was a world-renowned conductor and composer, and one of classical music's icons of the 20th century. He was Music Director of the New York Philharmonic and conducted the world's major orchestras, leaving behind an enormous legacy of audio and video recordings. Bernstein's works for the Broadway stage include *On the Town*, *Wonderful Town*, *Candide* and the immensely popular *West Side Story*. In addition to the *West Side Story* collaboration, Bernstein worked with choreographer Jerome Robbins on three major ballets, *Fancy Free*, *Facsimile* and *Dybbuk*. Mr. Bernstein was the recipient of many honors, including eleven Emmy Awards, one Tony Award, the Lifetime Achievement Grammy Award, and the Kennedy Center Honors.

STEPHEN SONDHEIM (*Lyrics*) was an American composer and lyricist whose brilliance in matching words and music in dramatic situations broke new ground for Broadway musical theater. His accolades included an Academy Award, eight Tony Awards including the Special Tony Award for Lifetime Achievement in the Theatre, multiple Grammy Awards, multiple Drama Desk awards and a Pulitzer Prize.

RENÉE RIMLAND (*Production Stage Manager*) is so happy to be back for another fabulous summer at Pittsburgh CLO! Broadway: *Beauty and the Beast*, *Cabaret*, *Fosse*, *Jekyll & Hyde*, *Steel Pier*. National Tours: *42nd Street*, *Beauty...*, *Les Misérables*, *Joseph ... Dreamcoat*, *The Phantom of the Opera*, *Savion!* Footnotes,

Buddy! The Buddy Holly Story, *Evita*, *Bye Bye Birdie*. PSM for over 13 seasons at Pittsburgh CLO. Other credits include Off-Broadway productions and regional theatre. For JRR, always! Proud AEA member.

KELLY HAYWOOD (*Assistant Stage Manager*) is excited to spend her 9th summer at Pittsburgh CLO. Favorite past Pittsburgh CLO productions: *Aida*, *Shrek The Musical*, *Peter Pan*, *In The Heights*, *Mamma Mia!*, *A Musical Christmas Carol*, *42nd Street*, *A Chorus Line*, *Disney's High School Musical*, *Into the Woods*, *Titanic*, Pittsburgh Public Theater: *A Christmas Story*, *Little Shop of Horrors*, *Steel Magnolias*, *Dragon Lady* Baltimore Centerstage: *The Importance of Being Earnest*.

HEATHER ANKLEY (*Assistant Stage Manager*) has worked professionally as a stage manager for more than 25yrs. Her body of work includes: Pittsburgh Public Theater: *A Midsummer Night's Dream In Harlem*, *Something to Live For* (WP), TUTS: *Ain't Misbehavin'*, *RENT*. Pittsburgh CLO credits span 9 seasons, and include: *Double Threat Trio* (WP), *Peter Pan*, *Sister Act*, *Game On* (WP), *In The Heights*, *Disney's Beauty and the Beast*, *Disney's Newsies*, *Kinky Boots*, *A Chorus Line*, and *A Musical Christmas Carol* (9yrs). The REP: *Scottsboro Boys*, *Wig Out!*, *Choir Boy*, *Souvenir*. PICT: *Merchant of Venice*. Pittsburgh Opera: *Marriage of Figaro*, *Falstaff*, *Dead Man Walking*, *Grapes of Wrath*. Proud member of AEA and IATSE #3.

MUSIC THEATRE INTERNATIONAL (*Licensing*) is one of the world's leading theatrical licensing agencies, granting theatres from around the world the rights to perform the greatest selection of musicals from Broadway and beyond. Founded in 1952 by composer Frank Loesser and orchestrator Don Walker, MTI is a driving force in advancing musical theatre as a vibrant and engaging art form. MTI works directly with the composers, lyricists and book writers of these musicals to provide official scripts, musical materials and dynamic theatrical resources to over 100,000 professional, community and school theatres in the US and in over 150 countries worldwide. MTI is particularly dedicated to educational theatre, and has created special collections to meet the needs of various types of performers and audiences. MTI's Broadway Junior™ shows are 30- and 60-minute musicals for performance by elementary and middle school-aged performers, while MTI's School Editions are musicals annotated for performance by high school students.



WHO'S WHO - CREATIVE

MARK FLEISCHER (*Executive Producer*) serves as the artistic and administrative head of the Pittsburgh CLO producing the company's 6-show summer season, Kara Cabaret Series and its annual production of *A Musical Christmas Carol*. Mark's passion for developing new musicals led to the creation of CLO's SPARK Festival initiative to develop new small musicals – a program made possible by the CLO's Next Generation Capital Campaign. Prior to joining the CLO, Mark was the Producing Artistic Director of Adirondack Theatre Festival from 2007 – 2014 where he was named the Region's Best Artistic Director by Metroland in 2009. From 1993 – 2002 he served as the Managing Artistic Director of Plano Repertory Theatre in suburban Dallas. With a passion for new plays and musicals, he has directed readings and world premiere productions for theatres across the country. He is a Board Member of the National Alliance for Musical Theatre (NAMT), chairing the organization's Educational Resources Committee and is also a member of The Broadway League where he serves on the Intra-Industry committee. Mark holds a BA in English Literature and Communication Arts from Austin College and MFA in Directing from the Theatre School at DePaul University.

PITTSBURGH CLO (*Producing Company*) has been the driving force for 78 years behind the preservation, creation and promotion of live musical theatre since 1946. Founded in the years following WWII as a way to bring Pittsburgh together for a community experience, the company has grown to become one of the largest regional musical theatre organizations in the country. The organization's commitment to preserving, creating, and promoting live musical theatre is evident in its diverse programming, which includes beloved

Broadway classics as well as the development of new works. PCLO's dedication to nurturing emerging talent is commendable, with numerous artists (Billy Porter, Renée Elise Goldsberry, Rob Marshall, Kathleen Marshall, Shirley Jones and many more) launching their careers under its wing. The mission extends beyond the 6 show summer series with other ongoing initiatives such as the Pittsburgh CLO Academy of Musical Theatre, the Construction Center for the Arts, the acclaimed Gene Kelly Awards for Excellence in High School Musical Theater and The National High School Music Awards (The Jimmys). Every ticket purchased impacts our own hometown, Pittsburgh, in a variety of ways beyond the stage performance. Pittsburgh CLO has always been a proud economic generator, hiring local theatre professionals to bring the best musical theatre to life. Since 1946, loyal Patrons, Subscribers, and Donors have stood beside our organization to ensure production of Broadway caliber shows right here in our hometown. Pittsburgh CLO is excited to continue creating magical musical memories that are by Pittsburgh, for Pittsburgh and partnered with Pittsburgh all year long! For more information, please visit PITTSBURGHCLO.ORG

The engagement of our distinguished Director & Choreographer, Baayork Lee for *WEST SIDE STORY*, is underwritten through the generous support of

Joe and Kathy Guyaux



NEXT GENERATION
CAMPAIGN



THANK YOU TO OUR PCLO DONORS

ACT 2 IS MADE POSSIBLE BY YOU!

Thank **YOU** for your philanthropic support of the Pittsburgh CLO's Annual Campaign and Education Campaign (through **MAY 22, 2024**).

Our family of Pittsburgh CLO donors plays a critical role in advancing our mission to celebrate live musical theater **made by Pittsburgh, for Pittsburgh, and in partnership with Pittsburgh**. From breathtaking musicals produced in our hometown to inspiring creative and youth-arts initiatives, your generosity keeps breathtaking musical theatre affordable and accessible to everyone in our community.

DONOR KEY: IMO: In Memory Of | IHO: In Honor Of | (): Number of Years

THE PITTSBURGH CLO IS GRATEFUL FOR THE GENEROUS SUPPORT PROVIDED BY THE PITTSBURGH CULTURAL TRUST

CORPORATIONS

DIAMOND CIRCLE

\$25,000 AND ABOVE

#1 Cochran (18)
Dollar Bank (23)
Healthcare Realty (8)
Highmark (32)
Howard Hanna
Real Estate Services (14)
Omni William Penn Hotel (15)
PNC (70)

GOLD CIRCLE

\$10,000 - \$24,999

Baird (29)
Chubb Group of Insurance
Companies (14)
Deloitte, LLP (17)
Delta Air Lines (8)
Educational Opportunities LLC
Giant Eagle, Inc. (19)
KeyBank (12)
Koppers (14)
Pittsburgh Steelers (3)
The Frank E. Rath - Spang &
Company Charitable Trust (45)
ReedSmith (18)
UPMC (21)
Williams Coulson Johnson Lloyd
Parker & Tedesco, LLC (1)

SILVER CIRCLE

\$5,000 - \$9,999

84 Lumber (3)
Alco Parking (19)
AON (4)
Ernst & Young (26)
Federal Home Loan Bank
of Pittsburgh
Federated Investors
Foundation, Inc. (16)
First National Bank (2)
K&L Gates, LLP (17)
KPMG (20)
MSA Safety (58)
TriState Capital Bank (3)

EXECUTIVE PRODUCER'S CIRCLE

\$2,500 - \$4,999

AI Solutions
Champ Printing Company (9)
Eat'n Park Hospitality Group (1)
Enkompas Technology Solutions (2)

Development Dimensions
International (12)
Littler Mendelson, P.C. (2)
Post & Schell (10)
PwC (8)
Saul Ewing Arnstein
& Lehr, LLP (6)
Schneider Downs (23)
Specialty Conduit & Manufacturing
Tudi Mechanical Systems (3)

PRODUCER'S CIRCLE

\$1,000 - \$2,499

Ampco-Pittsburgh
Charitable Foundation (30)
Bender Leadership Academy (5)
Confluence Financial Partners (2)
Diamonds by Rothschild (2)
Assured Partners of PA (21)
HHM Insurors (19)
Mars Bank (8)
McGrath McCall, P.C. (3)
Sitko Bruno, LLC (4)
Tomayko Group Holdings

FOUNDATIONS

Bozzone Family Foundation
The Jack Buncher Foundation
The Charity Randall Foundation
The Anne L. and George H. Clapp
Charitable and Educational Trust
Cooper-Siegel Family Foundation
Edith L. Trees Charitable Trust
Ganassi Foundation
The Grable Foundation
The Heinz Endowments
Irene C. Shea
Charitable Foundation
Helen M. Knepper Memorial Fund
of The Pittsburgh Foundation/
Community Foundation of
Westmoreland County
Massey Charitable Trust
Founders: Harris B. Massey
and Doris J. Massey
McKinney Charitable Foundation
Milton G. Hulme
Charitable Foundation
The Vernon C. Neal
and Alvina B. Neal Fund
W.I. Patterson Charitable Fund
Pauline Pickens Charitable Trust
Richard King Mellon Foundation
Robert and Mary Weisbrod
Foundation
The Falk Brothers Fund

PUBLIC SUPPORT

Allegheny Regional Asset District
ARP-NEA-Grants to the Arts
Pennsylvania Council on the Arts
Small Business Administration
Shuttered Venue Operators
Grant Program

GENE KELLY PRODUCERS SOCIETY

PCLO's Gene Kelly Producer's Society is a community of remarkable philanthropists who share an extraordinary commitment to Pittsburgh CLO.

TITLE PRODUCERS

\$25,000 AND ABOVE

Dan and Debby Booker (36)
Stephen and Helen
Hanna Casey (32)
Joan Clark Davis (26)
The Estate of Eleanor Dragan (16)
Dolores Kara
IMO Michael J. Kara (24)
John Keith Maitland Fund of
The Pittsburgh Foundation/
Community Foundation of
Westmoreland County (47)
Robert C. McCartney (42)
The Estate of Reverend
Thomas A. Wagner (30)

LEAD PRODUCERS

\$15,000 - \$24,999

Hal and Kimberly Burch (8)
Joe & Kathy Guyaux (23)
Edward T.
and Suzanne F. Karlovich (21)
Bill & Sandy Lambert
IHO our daughters:
Emily & Kelly (24)
Jim and Lisa McQuade (6)
Carol H. Tillotson
IMO Anne C. and
Arthur R. Heffren (15)
Mr. and Mrs. Alexander
Overstrom (4)
Ava Wilson (7)

EXECUTIVE PRODUCERS

\$10,000 - \$14,999

Barbara Chait
IHO Van Kaplan (6)
Joe & Karen DiVito (13)
Gus and Annie Hanna Engel (5)

THANK YOU TO OUR PCLO DONORS

ACT 2 IS MADE POSSIBLE BY YOU!



EXECUTIVE PRODUCERS CONT'D...

Mr. and Mrs. Peter J. Germain (19)
Deedra Kay (8)
Bryson and Meg Lesniak (1)
Mark & Diane Minnaugh (20)
Mr. and Mrs. Alexander
Overstrom (4)
Glenn & Stephanie Todd (9)

PRODUCING DIRECTORS

\$5,000 - \$9,999

William P. Anderson (24)
Mrs. Patti Matty Blenko
IMO Walter Blenko (42)
Kim & Curt Fleming (24)
George and Daphna Gans (7)
Patrick A. Gray (5)
Emilie Hammerstein (1)
Vicki C. Henne (8)
Michael and Evonne Henry (6)
Leslie Hyde (5)
Bryson and Meg Lesniak (1)
Nicholas and Anne Liparulo (11)
Mr. Allyn J. Lynch (11)
The Malandro Family (5)
Tim McVay and David Bush (5)
Jim and Lisa McQuade (7)
Robert and Christine
Pietrandrea (10)
Luke and Allison Sizemore (10)
Arlene & Barry Sokolow
IMO Anna & Nicholas Zelkovic (21)
Specialty Conduit &
Manufacturing, LLC (14)
Justice Debra and Stephan Todd (16)
Gary and Debbie Truitt (21)
Dennis and Diane Unkovic (15)
Travis and Nikki Viglione
Williams (8)
James R. Wiltman (19)

PRODUCERS

\$3,000 - \$4,999

Anonymous
Pritam and Binu Advani (6)
Dr. Vistata Bazaz-Sheeh Sehgal -
Fund IMO Dr. Kuldeep Sehgal of
The Pittsburgh Foundation (21)
Stephen and Dana Bloomberg (10)
Dr. Kerry Bron and
Mr. Robert Levin (2)
Adam and Patricia Davidson (19)
George and Ada Davidson (40)
Phyllis and Tom Davidson (2)
Joy Dawso (15)
Jane & Michael Dixon
IMO Cheryl Young (24)
Mr. and Mrs. Richard Dougherty (8)
Cathy and Randy Emanuelson (6)
Jeff and Jennifer Erdely (3)
Dr. Edward L. Foley (25)
David and Deborah Freeman (12)
Gary and Michele Gatto (3)
Richard S. Hamilton Foundation (22)
Mr. & Mrs. Robert A. Harlan (23)
Brian and Suzanne Koble (3)

Tom & Chris Kobus (27)
Cher Kotovsky
IMO Irwin Kotovsky (3)
John and Lisa Lemmex (6)
Dr. Diane Beynon Landers (10)
Richard and Lynn Lipovich (9)
Raymond & Karen Love (22)
John & Cathy Mary (12)
Margaret A. McLean
and Stanley Yorsz (11)
Michael and Wanda McGarry (9)
Janice and Ernie Meade (10)
Ed and Deb Moretti (8)
Kari Murphy (1)
Laurie Burkhart Mushinsky (20)
Jordan and Laura Nicholas (7)
The O'Loughlin Family
Charitable Fund (23)
Leah and Paul Ohodnicki (15)
Christina O'Toole
IMO Paul & Helen Triko (13)
Bob Powell (5)
Robin Randall (4)
Barbara Riehle (1)
Mike Rizzo (1)
Roseann Rosnick (4)
Jim and Linda Rumbaugh (3)
Randi L. Starr (8)
Mark and Tammy Steele (28)
Marcia and Louis Swartz (8)
Joan L. Tissue (9)
Elizabeth Toole
IMO Mrs. Michael Kutsenkow (4)
Melissa Ungar (13)
Mr. & Mrs. William H. Van Duzer (25)
Tom and Lynne VanHimbergen (4)
Mr. Richard J. Voller
IMO Debra J. Voller (37)
Matt Williams
in loving memory of
Teresa and Robert Williams (23)
Mr. & Mrs. W. Robert Wells (36)
Dr. Audrey Zelkovic
IMO Anna & Nicholas Zelkovic (12)
Tim & Linda Zimmerman (35)

ASSOCIATE PRODUCERS

\$1,500 - \$2,999

Anonymous
Tripp and Nancy Amick (7)
Jen Bohland-Anhalt
& Joshua Anhalt (15)
Michele and Pat Atkins (3)
Meghan and Jose Barrera (10)
Elaine M. Bellin and Phyllis D. Coontz
IMO Patty Maloney (7)
Joyce Bender (9)
Anthony Benevento (1)
Beatrice Bonfiglio
IMO Alfred Bonfiglio (26)
W. Dennis and Penny Bossick (3)
Carolyn Bouchard (1)
Felicitas Caracoche (4)
James P. Cassaro (6)
Stacy and Christopher Dee (12)
Teresa and Christian Furls (1)

Wynne Rooney Fedele
IMO George W. Rooney, Jr. (17)
Theresa B. Fedio (24)
Holly and Mark Fleischer (4)
Warren R. Fugate (5)
Mrs. Lori Giordano-Bosiljevac (3)
Richard S. Hamilton Foundation (22)
The Howe Family (5)
Dr. Martha and Lawrence John (8)
Christy Kobus (11)
Greg and Debbie Knowles (9)
In loving memory of
Dr. Susan Cohen
(from Christy and Aaron Kolko) (5)
Angela and Scott Langill (2)
Fred and JoEllen Leech (9)
Jamie McGovern (3)
Brandon Marzke (2)
Marcia Metelsky (2)
Marcia S. Morton (51)
Scott & Jennifer Neill (21)
Randall Olson (11)
William and Audia Otto (15)
Paul and Paula Palmer
In Honor Of Charlie Gray
and Van Kaplan (21)
Jean Marie Perry (10)
Elisa and Terry Poole (2)
Dawn Predmore
and Patrick Putorti (1)
Eric and Michele Schaffer (18)
Ken and Toni Senatore (31)
George and Helen Spalaris (11)
Sterling Family Fund of
The Pittsburgh Foundation (11)
Betsy and Tom Teti
IMO Charles and Anne Lynn (26)
LaShawnda A. Thomas (3)
Carla J. Vrsansky, Esq. (19)
Sally Wade (37)
Bob Williams (23)

MEMBER DONORS

PATRONS

\$500 - \$1,499

Anonymous
Anonymous
IHO Dan and Debby Booker (3)
Kathryn and James Bann (9)
Jim Bobenage (1)
Charles & Shelly Bossong
IMO Charlotte (25)
Debbie Boughner
IMO Jim Boughner (5)
Ellen Carabin (14)
Ms Nanette Catarinella
IMO Roland Catarinella (65)
Heather M. Chappars (14)
Mrs. Clare Donahue
IMO Thomas M. Donahue (10)
Merrill and Theresa Druggs (20)
Carl Dudeck, Jr. (14)
Brian and Tricia Eccher (3)
Elias Fedele (3)
Jeffrey & Karen Fink (28)



THANK YOU TO OUR PCLO DONORS

ACT 2 IS MADE POSSIBLE BY YOU!

PATRONS CONT'D...

Galatis Family (3)
Marlene Goldstein
IHO Sharon Goldstein (2)
Charlie and Patricia Gray
IHO the administrative
and production staffs (34)
Rev. Dr. James R. Gretz (38)
Andrew and Darlene Hasley (3)
Richard and Ruth Ann Hess (57)
MAC and George Hoover (6)
Donna and Keith Impink (1)
Kendra Whitlock Ingram
and Ben Ingram (1)
Jeff Irwin, D.D.S (37)
Briana and Jeff Kent (3)
Arthur Kerr (42)
Diana M. Kobus (5)
The J & MA Krolkowski Fund (12)
Darren and Linda Leonard (16)
Michael Leonard (1)
Milan Markovich (2)
Brandon Marzke (2)
Paul C. McBeth, III (4)
Jacquelin A. McCauley (11)
Dr. & Mrs. Brendan McGuire (6)
Richard and Nancy McKnight (35)
Catherine Mechling (26)
Mrs. Joan Milsom (22)
Jeff & Patty Nayhouse (23)
Mr. & Mrs. Richard L. Neish (13)
Mr. and Mrs. James O'Neill (25)
David & June Nimick (27)
Deerfield Nimicks (5)
Todd and M'Lisa Oravitz (4)
Steven and Helen Patricia (16)
Rose M. Perryman (22)
Christopher and Mary Rawson (9)
Leslie and Peter Robinson (17)
Susie and Jerry Robinson (24)
Iva and Gene Saraceni
IMO our daughter,
Elyse Jeanne Saraceni (14)
Susan Sargent (10)
Gregg Schmidtetter
and Lisa Gavlik (2)
Bob and Lori Shelow (6)
Martin Signore (1)
Jerald and Bonnie Solot (1)
Richard Stewart (5)
The Stoffel Family
IMO Dale Stoffel (10)
Reverend James R. Torquato (13)
Charles and Sue Turner (33)
Michael and Lisa Walsh (22)
Ramona Ward (4)
Mr. and Mrs. Thomas E. Wash (17)
Henry and Rosemarie Wetzell (9)
Mr. and Mrs. Robert W.
Wickerham (34)
Julie Wiles (9)
Mr. John C. Williams, Jr. (29)
Patti and Randy Wynkoop (14)

SPONSORS

\$250 - \$499
Anonymous
Anonymous
IMO Mary Helen Fuhrer
and Frank Fuhrer
Dr. & Mrs. Lee Agostini (32)
Joann S. Anderson (14)
Pamela Andreyko (2)
Nancy Arshoun (5)
Mary and Len Bach (9)
Dr. and Mrs. Ivan Baumwell (11)
George Bielich (7)
Joan Margaret Blasinsky (13)
Michael and Carol Bleier (21)
Robert C. Blough, Jr. (7)
Pamela Bolkovac (11)
Jean-Pierre Bonasso
IMO Stephanie Krick (1)
Michelle and George Bonnar (2)
Kathleen Boykin (33)
Myron and Jeanne Caplan (1)
Kathy Charochak (1)
Tom and Dale Christopher (20)
Mr. Edward E. Clever
IMO Barbara J. Clever (15)
Tom, Liz & Shannen Cloherty (3)
Michele Rone Cooper (19)
Steve Cuden
IMO Leon Zionts (5)
Bob and Judy Cunningham (1)
James and Theresa Doerfler (22)
Steven Doerfler (6)
Jeanne Drennan (3)
John Dreistadt (3)
Dr. Peggy Farrah
IMO brothers, Sonny
& Bobby Farrah (13)
Craig and Cynthia Flanagan (1)
Margaret Figgins
IMO David F. Figgins (44)
Robert and Helen Fitzgibbon (7)
Mr. Gene S. Forsythe (12)
Mr. and Mrs. Edward
Fortwangler (13)
Katherine and John Freed (14)
John and Elaine Frombach (5)
Ben and Michelle Gallagher (3)
John and Sandy Gandolfi (5)
Alvaro and Sandra
Garcia-Tunon (17)
The Clem Gligliotti Jr. Family (14)
Mr. & Mrs. Kurt Gottschalk (19)
David Gotwald & Peter Frazen (2)
Carolyn Grant (1)
Mr. and Mrs. William Greb (9)
Joann and Anthony Grieco (18)
Robert D. Harrison (6)
Amy and Paul Hoback (9)
Mr. and Mrs. Ben Andrew Huber (4)
Russell W. Johnson
IMO Eileen B. Johnson (3)
Dr. & Mrs. Robert T. Jones, Jr. (35)
Ms. Sherdina Jones (6)
Dr. Chris & Mrs. Emily Kaufmann (5)

Mr. and Mrs. William B. Kent
IMO Peggy Paul (8)
Arthur Kerr (44)
Gary and Betty Kessler (14)
Maria Kovacs (8)
Emily Lambert (3)
Jeff and Teri Lammert (1)
Richard and Victoria Lapishka (1)
Joan E. Lavery
IMO John P. Lavery (24)
Mr. and Mrs. Shawn Leifheit (13)
Mr. and Mrs. Craig C. Linner (2)
David M. and Joyce E. Lipkin (9)
Margery J. Loevner (4)
Jennifer Long (4)
Mr. & Mrs. Robert Madar (21)
Kay Manecke (10)
Richard Marciniak (18)
Dr. and Mrs. James McCann (13)
Dr. and Mrs. Samuel McClure (12)
Mr. Graham
and Elizabeth McIntosh (7)
Dr. Amy Mehta (1)
Mary Ann and Terry Mohr (11)
Carroll and David Morrison (11)
Ms. Bonita Mullaugh (12)
The Murray Family (9)
Tim and Carol Murray (8)
David & June Nimick (27)
William and Audia Otto (15)
Chris and Diana Patella (1)
David B. Patrick (1)
Ms. Lynley Pavkovich (5)
Warren and Sharlene Pirring (11)
Dave and Meg Rauth (3)
Edward and Anna Marie Rice (19)
Mona and Bob Riordan (28)
John and Joni Roland (14)
Don & Mary Rugh (24)
Mrs. John M. Sadler (11)
Paul Schamer (10)
Mary Seghi (25)
Ronald and Linda Siegel (3)
Josh and Patricia Sivitz (1)
Ann K. Shaner (5)
Ira and Lucy Snyder
IHO Allan Snyder (7)
Susanne and Ron Sommer (12)
Mr. & Mrs. Marlis Stacy (9)
Mr. and Mrs. David R.
Steinberg (24)
Jody Stockdill (2)
Cait and Spencer Sturgeon (3)
Robert and Vonnie Teagarden (5)
Gayle Tissue
and Yiannis Kaloyeropoulos (2)
Stephanie Veenis (2)
Nancy and Will Willems (12)
Al and Peg Williams (3)
Janice Wirth (15)
Gary and Diane Workman (7)
Tom Wyse, Jr.
and Robert A. Neft (27)

THANK YOU TO OUR PCLO DONORS

ACT 2 IS MADE POSSIBLE BY YOU!



LIMELIGHTERS

\$100 - \$249

Anonymous

Anonymous

IMO Agatha Anonymous

IMO Richard S. Mowl Jr.

A. L. Abramovitz (9)

Kathryn Adams

IMO Forbes Adams (2)

John Aiello (7)

Kelly J. Albenzer (1)

Dorcas Alexander

IHO Robert Alexander (1)

Ted and Donna Alexovich (7)

Elizabeth R. Amber

IMO Wayne Amber

& James Emswiler, CAS (11)

Charles and Veronica Anchors (13)

Mr. and Mrs. Anderson (1)

Sandy Artzberger (4)

George W. Ayres IMO

Joyce Davis Smith (6)

Debra Baldesberger (9)

Leroy and Ginger Ball (4)

Colleen Balsano (1)

Laura Barry

IHO The Awesome CLO Staff (10)

Dave and Trish Bartlett (1)

Mr. Gerald Bartolomucci (5)

Diane Berquist

IMO Michael J. Berquist, Esq. (5)

Kirk F Betteridge (1)

Jody Bishop (1)

Mr. David Blackmore (20)

Paul E. Block (23)

Michael Blow (1)

Sharon Bono (1)

Dale and Leigh Booker (7)

Mr. and Mrs. Dale Booker (7)

Michael and Maxine Botti

IHO Mike Botti (7)

Dorothy L Boyer (1)

Scott Branvold

and Lynda Davidson (12)

Elizabeth Brokaw (1)

Emily Brooks (1)

The Brown Family (4)

Mary Ann Brown (2)

Mary Patricia Brown (16)

Mr. and Mrs. Steve Brown (3)

Mr. Russ Carley (1)

Dan and Doreen Casey (9)

Helen Cestra (1)

Chris Chaney (1)

Vanessa Chapman (2)

Frank and Theresa Cicci (3)

Gary and Jo Ann Claus (31)

Nat and Diane Cohen

IHO Jim Mercer (19)

Ruth and Carl Crowe (2)

Fred and Joy Cullen (10)

Catherine M. Daily

IMO Hazel P. Daily (27)

Stacey Daily

IMO John Daily (2)

George and Kathleen Daniels (7)

Steve Daquinto (1)

Michael Davidow (1)

Dr. and Mrs. Tim DeBiasse (12)

Laura DeDi (1)

Michele DeGrazia (1)

Diane Deluca (2)

Peter and Melba Dibble (4)

Nick and Michele Ditullio (8)

Beth Ann Docherty

IMO Janet M. Docherty (11)

Mr. Paul S. Drost (22)

Scott J. Donaldson

& Michael Hunter (12)

Mr. and Mrs. Patrick Dunphy (27)

Mary Jane Edwards (9)

Timothy Eicher (1)

Gerald and Dawn Ellson (4)

Jenna Marie Enright Taylor (1)

Mike & Margie Evans (9)

Jacquelyn Ewalt (1)

Frank and Lisa Falcione (3)

Deby Fannin (1)

Mark and Carolyn Farabaugh (11)

George Farah (1)

Mr. Frederick Faraone (1)

Jacqueline Fennell (3)

Bob and Amy Ference

IMO Marie Ference (4)

Armand Ferrara (4)

Cheryl Ferri (1)

Kristian Feterik (3)

Mr. and Mrs. Robert Fiedler (12)

Tom and Sue Finegan (7)

Sarah Finney (3)

Jim and Paula Fiorucci

IMO Carol Fiorucci (17)

Bruce Fisher (1)

5 Js (16)

Peggy Forquer

IMO Betty Forquer (1)

Mr. & Mrs. Paul K. Fox (31)

Kenneth T. Frankenbery (11)

John and Susan Frantz (2)

Friedlander Family (12)

Linda Froehlich

IMO Richard D. Froehlich (4)

Michael D. Gaber (2)

Thomas Garnett (1)

Shirley Gaudette (2)

Bernard T. Geiser (1)

Damian and Hayah George (10)

Mr. and Mrs. William D. Ghrist III (21)

Rachel Gilman & Tina Cutone

IHO Abigail Gilman (4)

Angella Goetz (10)

Lisa Ann Goldsmith (1)

Tom and Cathy Gothie (19)

Stephen Graf (6)

Cyndy Graves (11)

Eddie Grimes

IMO Greg Triko (8)

Marjorie C. Gross (3)

Mark M. Gudalis (5)

Brandon Guzy (1)

Mr. Robert Haddox (1)

Dave and Beth Haines (1)

Denise Hampson (4)

Mr. and Mrs. Thomas R. Harley (4)

Niki Harris and Zane Weiner (8)

Michael and Tammy Hart (1)

Donna Hazel (3)

Ms. Paula Heil (6)

Michael and Diane Hillebrand (1)

Janice L. Hixson (7)

Lois M. Hoffman

IMO Mr. and Mrs.

Edward Hoffman (21)

Iris Holleran (1)

Daniel and Vicki Holthaus (11)

Melissa Hook (8)

Larry and Denise Hoover (14)

Mr. Bruce Hostler (15)

Millie Hutchison (2)

Dr. and Mrs. Ralph E. Jones (6)

Ron and Eileen Jones (1)

William Jones (1)

Elaine Kaczmarek

IMO Dorothy Procupp

and Joanne Readshaw (21)

Jim and Cheryl Kassner (4)

Mary Kellam

IMO Robert C. Milsom (5)

Kelly and Walter Keller (2)

Patsy & PK Kennedy (4)

Roy and Lori Kern (4)

Russell Kern (1)

Mr. and Mrs. Kevin Killinger (6)

James and Nita Kincaid (1)

MaryAnn & Bill King (25)

Debra and Jack King (14)

James R. Kirsch

IMO Audrey K. Kirsch (14)

Mr. Dennis Knapp (1)

Diane Knechtel (21)

Bruce Knepper (1)

Dr. Stephanie Kobil (28)

Lou M. Kramer, Jr.

IMO Louis Kramer, Sr. (11)

Shawn and Judith Kramer (5)

Mac and Eileen Kravitz (17)

Margaret and Dan Lackey (6)

Joan Lacomis (4)

Nancyann Letterio (6)

Neil and Sharon LeJeune (11)

Dirk M. Lesnett (2)

Leslie and Rich Levine (5)

Jonathan Levinson (1)

Jeff and Rachel Lizik (8)

Kate Loy (4)

Jeff and Dr. Jae Luck (4)

Robert Luttner (2)

Carole Malik

and Marlene Campas (2)

Mr. & Mrs. Gregory D. Maloney (30)

Janet K. Manuel (17)

Rudy & Rose Marshalek (1)

Jim and Maribeth Masquelier (1)

David Maxwell (36)



THANK YOU TO OUR PCLO DONORS

ACT 2 IS MADE POSSIBLE BY YOU!

LIMELIGHTERS CONT'D...

Larry and Michaelene McCahan (32)
Mrs. Neva McClymonds IMO John McClymonds (9)
Amanda McCoy (1)
Mark and Patricia McGinley (7)
Paul and Melissa McLane (6)
Mr. and Mrs. Daniel Meier and Family (7)
Christine Matelan (1)
Bob and Chris Meyer (9)
Robert and Lynn Mialki (7)
Joseph and Gina Milcoff (5)
Robert and Amber Miles (6)
Justin J. Mohney (3)
Dr. and Mrs. James D. Moore (15)
Jeff and Crystal Moore (1)
Lee Morehouse (4)
Jim and Deborah Muders IMO Tony Wieckowski (17)
Wendy Murdock (1)
Jennifer Murr (1)
Richard Narvin IHO My Bunny (3)
William Naylor (1)
Marisa Nero (1)
William Noel (3)
Dan and Lisa Nydick (17)
Alice Oakes (5)
Michael J. O'Brien (3)
James Ohr (2)
Pascal Family (1)
Jo-Ann Paulenda (7)
Kathy & John Pechunka (15)
Richard and Deborah Peltier (1)
Vincent Petrocelli IMO Carole L. Petrocelli (18)
Mark F. Piedmonte (5)
Mr. and Mrs. Stephen F. Piskurich (26)
Mr. & Mrs. Donald J. Platt (27)
Cindy & John Pokora IMO Lil Sciulli (12)
Kathy Jo Pollack (20)
Kenneth Powell (1)
Barry B. Premoshis (23)
Barbara Provenzano (20)
Barbara Provenzano (18)
Jim and Maura Puchany (4)
Quality Repair Services, LLC (10)
Sue Quinn (4)
Pamela Rakosky (1)
Joshua and Brielle Reicks (5)
Edward M. Reppa, Jr. (17)
Mr. & Mrs. Frank Ricco Jr. (13)
Melinda Rietzel (2)
David and Sylvie Rigdon (7)
Denise & Rusty Roach (2)
Gary and Cookie Roberson (2)
Marcy Robertson (2)
Kristen Rohr (2)
Dante Romito (1)
Al Rose IMO Diane Rose (17)

Rosella Rosener (14)
Wendy Ruch (1)
Sally and Edmund Ruffin (1)
Kathy Ruffing (1)
Ms. Kathleen Sacco & Mr. Andrew Greiner (2)
Frank and Denise Salopek (8)
Dianne Scansaroli (9)
Mark Scappe (6)
Mr. Jim Schepis (1)
Mr. and Mrs. Daniel C. Schetley (11)
John C. Schlotterer (8)
Edward R. Schneider (4)
Carl W. Schultz (6)
Emily Busse Schwartz IMO John and Maggie Busse (2)
Jim and Sheree Sciarretta (5)
Victoria and David Serafini (19)
Brian Sergi-Curfman (2)
Steve and Linda Sesack (2)
Madalaine T. Shigle IMO Therese "Grammy" Sciulli (5)
Vincent J. Siciliano IMO John A. Siciliano (39)
Carol Sikov Gross IMORhoda F. Sikov (5)
Teresa Sirianni (1)
Jacob and Rula Skezas (10)
Walter and Gayle Sklarsky IMO Clara Sklarsky and Sandra Cessna (16)
Bob and Chris Sloboda (8)
Joseph and Lynn Smith (10)
Ruth Snyder (2)
Tom and Karen Sochacki (2)
Lyn Sokol (1)
Steve Sokol (1)
Susan Sorbo (12)
Jocelyn Steele (2)
Carol M. Stein (18)
Mr. & Mrs. Gregory A. Stein (35)
Joe Stevens (9)
Jenny and Kelly Stewart (7)
Troy and Julie Stiffler (2)
Debra Stiger (6)
Mr. and Mrs. George S. Stipetich (3)
Dennis and Allison Stombaugh (6)
Christine and Ronald Stout (1)
Wade and Barbara Stull (6)
Jayelyn Swink (3)
Janet L. Templer IMO Carol R. McAuley (24)
Taylor Toth (1)
Charles F. Traeger & Rita Powroznik-Traeger (9)
Nancy and Gary Tuckfelt (5)
IMO Jay and Renee Minsky
Catherine Turner (25)
Penny Tzortzis (3)
Keith and Carol Unitas (3)
James and Dorothy Valimont (12)
Jane A. Vaselenak (4)
Matt and Dr. Anne Veres (5)

Kathleen M. and Emil P. Varnise (1)
Marilyn and Joseph Vettorazzi (9)
Janet Wagner (1)
William and Susan Wagner (1)
Dan and Lee Ann Wahl (4)
Jason Waltz (1)
Justin Weissert (1)
Jane Werner and Bob Rutkowski (1)
Karen and Fred Wheeler Jr. (3)
Michael and Shelby Wherry (6)
Dick and Margaret White (17)
Peggy C. Whitehurst (8)
Mr. David E. Winklmann (8)
Brandon Wolfe (1)
Carol Worstell IMO Mildred Worstell (1)
Linda Wright (16)
Lawrence Yagoda (1)
Sam Yates (1)
Joseph Yuhasz (4)
Susan J. Zuk (8)
Dr. Paulina F. Zunino (5)
Susan Stanish Zurawsky (4)
Ms. Linda Zyroll (1)

PITTSBURGH CLO WOULD LIKE TO THANK AND RECOGNIZE THE FOLLOWING MEMBERS OF THE LEGACY LEGENDS SOCIETY:

Paul Block
Jim Gretz
Robert C. McCartney
Paul and Paula Palmer
Jeffrey Lawrence Pollock, Esq.
Sally Wade
Reverend Thomas A. Wagner

For more information on the Legacy Legends Planning Giving Program, please visit our website at PittsburghCLO.org

Pittsburgh CLO thanks the Ambassadors and Wine Tasting & Silent Auction Donors for their generous support of the CLO Performance Season and CLO's Arts, Education, and Community Engagement Initiatives.

To update your preferred donor listing, please contact the CLO Development Office at 412-281-3973, ext. 4.



LEGACY LEGENDS

CLO LEGACY LEGENDS recognizes the dedicated supporters who share a vision for Pittsburgh CLO's future. Their bequests and other planned gifts will have a profound and lasting impact on the artistic quality of the work you see on our stages.

If you would like to join us in building that future, please consider becoming a **CLO LEGACY LEGEND** by naming Pittsburgh CLO as a beneficiary of your will or trust, IRA or other retirement plan, life insurance policy, life income, or other planned gift. Designating Pittsburgh CLO is not a complicated process and can often be done with a phone call to your investment adviser.

If you have already named CLO in your estate plans – let us know and we will add your name to our CLO LEGACY LEGENDS and include you in special recognition and benefits. **For more information, please contact Wynne Fedele, Director of Development at wfedele@pittsburghCLO.org or call 412-281-3973 x232.**

Your Story.

Classic work that will grow and unfold over the course of your life. The story, our story, *your* story.

BAIRD

Private Wealth Management

Baird Pittsburgh | 308 Seventh Avenue | Pittsburgh, PA 15222
Pittsburgh.bairdwealth.com

©2024 Robert W. Baird & Co. Incorporated. Member SIPC.



YOUR LEADING ROLE AWAITS!

*Did you know that a ticket only covers half
of the expenses of a PCLO production?*

*Charles Shaughnessy, star of PETER PAN, with
donors at Supper with the Stars*

**Join our vibrant donor community and help us keep
the curtain rising!**

- **\$100 GIFT** – Gain priority access to readings of new musicals and recognition in PCLO show playbills.
- **\$250 GIFT** – Go behind-the-scenes with an invitation for two to attend a reception and dress rehearsal of a PCLO show and enjoy two drink vouchers for the Benedum Center bars.
- **\$1,500 GIFT** (and above) – We cordially invite you to join our fabulous **Gene Kelly Producer's Society**, gaining access to thrilling opportunities to meet, mingle, and dine with stars and befriend fellow musical theater lovers! Furthermore, enjoy premier benefits such as year-round access to PCLO's concierge department for all your ticket exchanges and purchases; free reserved parking during PCLO shows; complimentary tickets; and more.



Donors at Dress Rehearsal Reception

**FOR MORE INFORMATION ABOUT DONOR BENEFITS AND
WAYS TO GIVE, VISIT PITTSBURGHCLO.ORG OR CALL OUR
DEVELOPMENT OFFICE AT 412-281-3973 EXT. 4**



**JOIN
OUR DONOR
FAMILY TODAY!**

The tax deductible amount of your contribution is limited by the excess of your contribution over the value of certain benefits provided by CLO. For more information, visit pittsburghCLO.org. A copy of the official registration and financial information may be obtained from the Pennsylvania Department of State by calling toll free, within Pennsylvania, 1-800-732-0999. Registration does not imply endorsement.



SPECIAL THANKS

The Pittsburgh CLO Gallery of Heroes in-school program is sponsored by The National Endowment for the Arts, Highmark Blue Cross Blue Shield, The Massey Charitable Trust, The Pittsburgh Foundation, Allegheny Foundation, Healthcare Reality, Cooper-Siegel Family Foundation, Laurel Foundation and UPMC.

The Gene Kelly Awards are sponsored by The Michael J. Kara Family, Deloitte, the Gismondi Family Foundation, Highmark Blue Cross Blue Shield, PNC, and the CLO Ambassadors.

The Charles Gray Award for Special Achievement in Arts Education is underwritten by the Roy A. Hunt Foundation.

The CLO New Horizons is made possible in part by UPMC, Highmark Blue Cross Blue Shield, The Pittsburgh Foundation, Allegheny Foundation, Bellin/Coontz Family Giving Fund, Bender Consulting Services, Cooper-Siegel Family Foundation, PriceWaterhouseCoopers, and the Edith L. Trees Charitable Trust.

Stars of Pittsburgh CLO's Summer Series dine at the Grand Concourse Restaurant at Station Square.

The Official Hotel of Pittsburgh CLO. *The Official Airline of Pittsburgh CLO.* *The Official Car Provider of Pittsburgh CLO.*

EQT New Musicals Commissioning Fund

The purpose of the EQT New Musicals Commissioning Fund is to identify and commission writers both in Pittsburgh and across the country to write new musicals for the Pittsburgh CLO Summer Season, Cabaret and Gallery of Heroes program.

NOW THROUGH AUGUST 31ST!

SUMMER STAYCATION

FREE ADMISSION

WITH ALLEGHENY COUNTY LIBRARY CARD & RESERVATION

RADPASS.ORG

SEE OFFERS FROM SOME OF PITTSBURGH'S FAVORITE ATTRACTIONS AND BOOK YOUR STAYCATION PASS WITH THIS QR CODE:



A Pittsburgh legend returns

Fine Southern Italian fare

Seeped in the charm and bounty of the Mediterranean

TERRACE ROOM



OMNI WILLIAM PENN HOTEL
Thursday | Friday | Saturday
5 - 9 pm
+1 412.553.5235

PRE-SHOW DINNER

Join us before the show for a prix fixe menu
\$55* | Salad (appetizer Caesar or house), an entrée
(pappardelle, chicken or branzino) and choice of one dessert

*Price is per person and excludes tax and gratuity.



PNC

2024-2025

BROADWAY *in* PITTSBURGH™



H★MILTON

September 11-29, 2024



THERE'S LIFE AFTER ROMEO

Juliet

THE HIT BROADWAY MUSICAL

October 29-November 3, 2024



MJ

THE MUSICAL

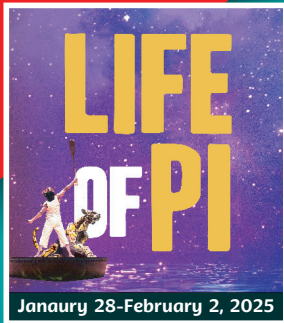
November 19-December 1, 2024



THE HIT BROADWAY MUSICAL

FUNNY GIRL

January 7-12, 2025



LIFE OF PI

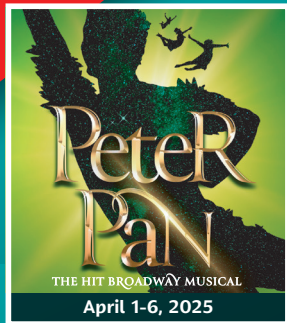
January 28-February 2, 2025



WINNER • 5 TONY AWARDS INCLUDING BEST MUSICAL

Kimberly Akimbo

March 4-9, 2025



Peter Pan

THE HIT BROADWAY MUSICAL

April 1-6, 2025



SOME LIKE IT HOT

BROADWAY'S GREAT BIG MUSICAL COMEDY

April 15-20, 2025



Season Special

STOMP

STOMP

October 18-19, 2024



Season Special

COME FROM AWAY

THESE STORIES HIT BROADWAY

May 2-4, 2025

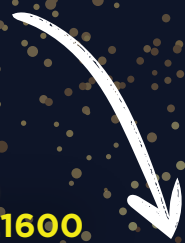
BENEDUM CENTER SEASON TICKETS 412-456-1390 GROUPS 10+ TICKETS 412-471-6930

TRUSTARTS.ORG/BROADWAY



SUBSCRIBE & SAVE

VISIT PPT.ORG
OR CALL 412.316.1600



**DIAL
FOR
MURDER**

THE HOBBIT
THE FABLED FANTASY
BECOMES REALITY

Presented by
the M. Patrick
Daniels Fund of The
Pittsburgh Foundation

**A
CHRISTMAS
STORY**
THE PLAY

**TROUBLE
IN
MIND**

One
Season
to Rule
them all.

PITTSBURGH
Public
THEATER

TWELFTH NIGHT

Movies in the Parks

2024 Allegheny County Summer Movie Series

Bring your blankets or lawn chairs and join us for family-friendly movies in the park. Movies start at dusk, between 8:50 and 9:15 pm. All movies are free!

June 6:

"Elemental" PG
Deer Lakes Carp Field

June 13:

"The Super Mario Brothers" PG
Harrison Hills Yakaon Shelter

June 20:

"Teenage Mutant Ninja Turtles:
Mutant Mayhem" PG
Boyce Park Four Seasons Center

June 27:

"Paw Patrol: The Mighty Movie" PG
Hartwood Acres Mansion Lawn

July 11:

"The Little Mermaid (1989)" G
North Park Boathouse Lawn

July 18:

"Trolls Band Together" PG
Settlers Cabin Moccasin Shelter

July 25:

"Indiana Jones Raiders of the Lost Ark
(1981)" PG
South Park Amphitheater

August 1:

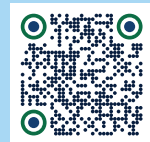
"Migration" PG
White Oak Chestnut Shelter

August 8:

"Chicken Run" G
Round Hill Visitors Center



In the event of inclement weather, please visit our Facebook page or sign up for Allegheny Alerts for any notifications on cancellations.



For more information, scan the QR code or visit alleghenycounty.us/specialevents



The Director and Choreographer are members of the Stage Directors and Choreographers Society, a national theatrical labor union.



United Scenic Artists represents the designers and scenic painters for the American Theatre.



Backstage and Front of the House Employees are represented by the International Alliance of Theatrical Stage Employees (or I.A.T.S.E.).



The actors and stage managers employed in this production are members of Actors' Equity Association, the union of professional actors and stage managers in the United States.



The Musicians, Conductors, Music Preparation Personnel and Librarians employed in this production are members of the American Federation of Musicians of the United States and Canada.



Pittsburgh CLO receives state arts funding support through a grant from the Pennsylvania Council on the Arts, a state agency funded by the Commonwealth of Pennsylvania and the National Endowment for the Arts, a federal agency.



The Allegheny Regional Asset District, a county agency created to support and finance regional assets, including libraries, parks, cultural groups, sports and civic facilities, and to distribute tax relief to the 128 municipalities of Allegheny County.



The National Endowment for the Arts is a public agency dedicated to supporting excellence in the arts, both new and established; bringing the arts to all Americans; and providing leadership in arts education. Established by Congress in 1965 as an independent agency of the federal government, the Endowment is the nation's largest annual funder of the arts, bringing great art to all 50 states, including rural areas, inner cities, and military bases.



Pittsburgh CLO AMBASSADORS



BECOME A PITTSBURGH CLO AMBASSADOR TODAY!

The mission of the Pittsburgh CLO Ambassadors is to support and broaden the reach and diversity of the Pittsburgh CLO and to make musical theatre an active and accessible part of the lives of its members and others through the organization of and participation in a combination of theatrical, social, fundraising, volunteer, and educational events.



pittsburghCLO.org/Ambassadors



PITTSBURGH CLO STAFF

Mark Fleischer, *Executive Producer*

SALES & MARKETING

Sharon Goldstein.....*Director of Sales and Marketing*
 Nicole Castelli.....*Patron Services and Ticketing Associate*
 Ryan Clark.....*Manager of Patron Services and Ticketing*
 Emma Cumberledge.....*Patron Services and Ticketing Associate*
 Charlene Flores.....*Group Sales Coordinator*
 Sidney Franczak.....*Marketing Manager*
 Leo Liotta.....*Patron Services and Ticketing Associate*
 Kyle J. Malinosky.....*Marketing Coordinator*

DEVELOPMENT

Wynne Fedele.....*Director of Development*
 Liz Hoyt-Brown.....*Associate Director of Development*
 Brandon Marzke.....*Manager of Individual Giving*
 Tom McGee.....*Corporate and Foundation Relations Manager*
 Dayna Sowers.....*Board Liaison/Development Coordinator*
 Levi Von Iderstein.....*Development Data Coordinator*

FINANCE & ADMINISTRATION

Angela Langill.....*Director of Finance and Administration*
 Michael J. Cerchiaro.....*General Manager*
 Shelby Hinkle.....*Human Resources Manager*
 Kuei-O Lin.....*Accountant*
 Makenzie Shimko.....*Accounting & Human Resources Coordinator*
 Angie Staats.....*Seasonal Company Manager*
 Keturah Wasler.....*Office Manager*
 Amanda Wilcox.....*Controller*

EDUCATION

Jim Scriven.....*Director of Education*
 Patty Maloney.....*Principal*
 Brady Patsy.....*Community Engagement Manager*
 Aidan Quartana.....*Education Associate*
 Alexander Righetti.....*Education Operations Coordinator*

PRODUCTION/CONSTRUCTION CENTER

Billy Mason.....*Associate Producer*
 Anna Hanson.....*Producing Assistant*
 Macarena Subiabre.....*Production Manager*
 Michele Sullivan.....*Construction Center Business Manager*
 Michael Bannias.....*Key Carpenter*
 Dritan Cullaj.....*Key Carpenter*
 Fredrich Drenkow.....*Journeyman*
 Jordan Edkins.....*Foreman/CNC Operator*
 Andrew Kutrufis.....*Assistant Foreman*
 BJ Lipari.....*Scenic Charge*
 Taylor Oberle.....*Journeyman*
 Brendan Smith.....*Key Carpenter*

WEST SIDE STORY PRODUCTION

Heather Ankley*.....*Assistant Stage Manager*
 Jacob Brent.....*Associate Director, Associate Choreographer*
 Maeve Berry.....*Rehearsal Pianist*
 Greg Brooks.....*Sound Associate*
 Catie Brown.....*Rehearsal Pianist*
 Genevieve M. Chiappetta.....*Costume Coordinator*

Tomé Cousin.....*Intimacy Coordinator*
 Teagan deGroen.....*Stage Management Production Assistant*
 Jordan Edkins.....*Shop Foreman*
 Anthony T. Edwards.....*Music Director, Conductor*
 Chris Evans.....*Sound Designer*
 Robert Fletcher.....*Costume Designer*
 The Kansas City Costume Company.....*Costume Provider*
 Jasper Gitlitz.....*Stage Management Production Assistant*
 Lisa Ann Goldsmith.....*Dialect Coach*
 David Grindrod.....*Assistant to the Director*
 Kelly Haywood*.....*Assistant Stage Manager*
 Kevin Hogan.....*Assistant Head Electrician*
 George Hoydich.....*Music Coordinator*
 Dan Kendgia.....*Head Electrician*
 Travis Klingler.....*Hair and Makeup Supervisor*
 Jeff Knaggs.....*Hair and Makeup Designer*
 Randy Kovitz.....*Fight Director*
 Andrew Kutrufis.....*Head Carpenter*
 Baayork Lee.....*Director, Choreographer*
 James A. Manning.....*Artistic Fellow*
 Leo Meyers.....*Scenic Designer*
 Paul Miller.....*Lighting Designer*
 Robert Neumeyer.....*Season Arranger and Orchestrator, Music Supervisor*
 Taylor Oberle.....*Head Props*
 Brad Peterson.....*Video Designer*
 Renée Rimland*.....*Production Stage Manager*
 Marty Savolskis.....*Props Coordinator*
 Evan Shoaf.....*Assistant Head Carpenter*
 Kathie Sullivan.....*Wardrobe Supervisor*
 Jacob Zedek.....*Associate Lighting Designer*

SUMMER 2024 INTERNS

Elizabeth Amen.....*Development*
 Luke Brahler.....*Marketing and Public Relations*
 Skyler Bruno.....*South Park Summer Camp*
 August Carter.....*Downtown Aftercare*
 Bailey DeBerry.....*Company Management*
 Colin Eccher.....*Marketing and Public Relations*
 Ariana Gant.....*Community Engagement*
 Abigail Gilman.....*Producing*
 Theo Kutsko.....*Music*
 Andre Lewis.....*Sound Design*
 Sophie McClung.....*Production Management*
 Jenny Molyneaux.....*Downtown Education Assistant*
 Rachel Parsons.....*Downtown Education Assistant*
 Madeline Segar.....*Costume Design & Coordination*
 Sadie Shelkey.....*Graphic, Website, and Social Media Design*
 Stephen Smart.....*Lighting*
 Jillian Thomas.....*Downtown Education Design*
 Phoenix Thomas.....*Stage Management*

Pittsburgh CLO
 CELEBRATING OUR 100TH BIRTHDAY
 TO ADVERTISE IN PROGRAM BOOKS:
 412-471-1497 | advertising@culturaldistrict.org

*Members of Actors' Equity Association, the union of professional actors and stage managers in the United States.

BEST DOCTORS HOSPITALS CUSTOMER SERVICE

Every time.



With UPMC Health Plan, you have the best people, places, and programs all working together for you. Whether you seek care from UPMC doctors and hospitals or from our large community network, you can count on getting high-quality care where and when you need it. Plus the award-winning service of our Health Care Concierge team. So that you have access to the best care and the best help on every call and for every visit, every time you need it. [UPMCHHealthPlan.com](https://www.upmchealthplan.com)

PARTNERS IN CARE

UPMC HEALTH PLAN

For UPMC Health Plan "best" information go to www.upmchealthplan.com/best.

Nondiscrimination statement

UPMC Health Plan¹ complies with applicable federal civil rights laws and does not discriminate on the basis of race, color, national origin, age, disability, sex, sexual orientation, gender identity, or gender expression.

¹UPMC Health Plan is the marketing name used to refer to the following companies, which are licensed to issue individual and group health insurance products or which provide third party administration services for group health plans: UPMC Health Network Inc., UPMC Health Options Inc., UPMC Health Coverage Inc., UPMC Health Plan Inc., UPMC Health Benefits Inc., UPMC for You Inc., and/or UPMC Benefit Management Services Inc.

Translation Services

ATENCIÓN: si habla español, tiene a su disposición servicios gratuitos de asistencia lingüística. Llame al 1-855-489-3494 (TTY: 1-800-361-2629).

注意：如果您使用繁體中文，您可以免費獲得語言援助服務。請 致電 1-855-489-3494 (TTY：1-800-361-2629)。