



Pittsburgh
CLO

Seussical

#PCLOSeussical | @PittsburghCLO

A *Wickedly Fun* HOLIDAY TRADITION

MATTHEW LOMBARDO'S

WHO'S HOLIDAY!

NOV 29-
DEC 22
GREER CABARET
THEATER

STARRING
LARA HAYHURST
as CINDY LOU WHO



CONTAINS
ADULT
CONTENT

A Musical CHRISTMAS CAROL

HOLIDAY FAMILY
TRADITION FOR OVER
30 YEARS

DEC 13-22
BYHAM THEATER

STARRING
CHARLES SHAUGHNESSY
(THE NANNY, DAYS OF OUR LIVES)
as SCROOGE





PITTSBURGH CLO BOARD OF DIRECTORS

OFFICERS



Alexander Overstrom
CHAIRMAN OF THE BOARD



Edward T. Karlovich
PRESIDENT

HONORARY CHAIRMAN OF THE BOARD

Julie Andrews

CHAIRMAN OF THE BOARD

Alexander Overstrom

PRESIDENT

Edward T. Karlovich

VICE PRESIDENTS/ AUDIT

Richard J. Lipovich

VICE PRESIDENTS/ CABARET THEATER

John Dick

Meghan Barrera

Leah Ohodnicki

VICE PRESIDENT/ CLO AMBASSADORS

Christy Kobus

VICE PRESIDENT/ CONSTRUCTION CENTER & FACILITIES

Yarone Zober

VICE PRESIDENTS/ DEVELOPMENT

Mark J. Minnaugh

Joseph V. DiVito, Jr.

Laurie M. Mushinsky

VICE PRESIDENTS/ EDUCATION

Christine M. Kobus

George Gans

VICE PRESIDENTS/ FINANCE

Timothy K. Zimmerman

John A. Lemmex

VICE PRESIDENTS/ HUMAN RESOURCES

Lesley Evancho

Leslie S. Hyde

VICE PRESIDENTS/ MARKETING

Jon Galatis

VICE PRESIDENTS/PRODUCTION, NEW WORKS DEVELOPMENT & FUNDING

Peter J. Germain

Dennis Unkovic

Stephen S. Bloomberg

VICE PRESIDENTS/ NOMINATING

Scott F. Neill

Glenn D. Todd

VICE PRESIDENTS/ PLANNING

Luke A. Sizemore

VICE PRESIDENTS

Pritam Advani

Daniel I. Booker

Sherri Grask

Richard S. Hamilton

Laura Penrod Kronk

Robert C. McCartney

SECRETARY

Johanna G. O'Loughlin

TREASURER

Joseph V. DiVito, Jr.

EXECUTIVE DIRECTOR EMERITUS

Charles Gray

EXECUTIVE PRODUCER EMERITUS

Van Kaplan

CORPORATE COUNSEL

James M. Doerfler

CHAIRMAN OF THE BOARD EMERITUS

Helen Hanna Casey

William M. Lambert

George A. Davidson, Jr.

Joseph C. Guyaux

James E. Rohr

Daniel I. Booker

Louis D. Astorino

DIRECTORS

Joyce A. Bender

Tony Benevento

Patricia M. Blenko

Chris Brussalis

Jane Dixon

Clare Donahue

Gus Engel

Emilie Hammerstein

Vicki C. Henn

Paul Hennigan

Margaret Izzo

Brian Koble

Deedra Knaus

Diane B. Landers

Nicholas J. Liparulo

Margaret McLean

Timothy M. McVay

Christina P. O'Toole

Robin S. Randall

Michael Rizzo

Eric A. Schaffer

Gregg Schmidtetter

Arlene Sokolow

Helen Spalaris

LaShawnda Thomas

Joann L. Tissue

The Honorable

Debra Todd

Carla J. Vrsansky

Jake Wheatley, Jr.

ADVISORY BOARD

George Ator

Joan Bogut

Charles R. Fallon

Rosemarie R. Parse, Ph.D.

Melvin D. Rex



SHIRLEY JONES

A gala celebration of her life, career, and legacy

Saturday, September 21, 2024
4pm | Byham Theater

HOSTED BY

Shaun Cassidy ✨ Patrick Cassidy ✨ Ryan Cassidy

STARRING



**SIERRA
BOGESS**

(The Little Mermaid)



**NORM
LEWIS**

(Phantom of the Opera)



**JESSIE
MUELLER**

(Beautiful)



**KELLI
O'HARA**

(The King and I)



**ADAM
PASCAL**

(Rent)

SPONSORSHIP & GALA TICKETS ON SALE NOW

4:00pm Tribute Concert | Byham Theater

6:00pm Cocktails and Lite Bites | Omni William Penn Hotel

7:00-8:30 pm Seated Dinner with the Stars | Omni William Penn Hotel

Pittsburgh CLO invites you to a special concert event celebrating the extraordinary life, career and legacy of Pittsburgh native Shirley Jones, the beloved star of the original **The Music Man** film. This Gala Celebration is also a vital fundraiser for Pittsburgh CLO's Education and Artistic programs, bringing exceptional arts education and enriching experiences to the Pittsburgh community.

CONCERT-ONLY TICKETS GO ON SALE IN AUGUST

For more information, please visit PITTSBURGHCLO.ORG



Welcome Friends,

To our final grand show, the end of our run,
SEUSSICAL is here, full of colors and fun.
With Horton the elephant and Whos' from Who-ville,
It's a magical journey, a joy and a thrill.

From Jungle of Nool to the tiniest town,
It brings smiles and laughs, never a frown.
Though summer now ends, there's still more in store,
Our curtains will rise, and you'll shout for more.

Join us this winter for some Seuss holiday cheer,
With **WHO'S HOLIDAY!** for adults who like to drink beer.
Cindy Lou Who, all grown-up and wickedly funny,
Will bring you giggles worth all your money.

A MUSICAL CHRISTMAS CAROL with Charles Shaughnessy as Scrooge
is sure to bring you an amount of joy that's immensely huge.
A holiday tradition, full of songs and delight,
Perfect for families on a cold winter's night.

Mark your calendars for a night that will be quite grand,
At the **SHIRLEY JONES GALA**, you'll clap, and you'll stand.
With Norm Lewis, Jessie Mueller, Kelli O'Hara, and more
Plus her Cassidy sons (Shaun, Patrick, and Ryan) oh, what fun is in store.

And don't miss **YOUNG FRANKENSTEIN** over at the Greer,
Now through September 1st, thrills and chills will appear.
A hilarious romp from the mind of Mel Brooks,
With monsters, mad science, and plenty of hooks.

Your support keeps us going, through thick and through thin,
Visit our website, join our donor kin.
Each gift makes a fantastical impact, you see,
Helping us thrive, bringing more joy and glee.

Now sit back, relax, let your worries all go,
As we bring you the joy of **SEUSSICAL** the show.
With laughter and wonder, and stories so grand,
Join us on this journey to Seuss's bright land!



Mark Fleischer
Executive Producer
ExecutiveProducer@PittsburghCLO.org

THEATER CONNECTS THE WORLD. SO DO WE.

Just like the Pittsburgh CLO, we're passionate about bringing people together, creating meaningful moments and inspiring new heights.

Delta is proud to be the official airline partner of the Pittsburgh CLO.



KEEP CLIMBING



JULY 30 - AUGUST 4, 2024



MARK FLEISCHER, *Executive Producer*
Presents

Seussical

MUSIC BY **STEPHEN FLAHERTY**

LYRICS BY **LYNN AHRENS**

BOOK BY **LYNN AHRENS** AND **STEPHEN FLAHERTY**

CO-CONCEIVED BY **LYNN AHRENS, STEPHEN FLAHERTY, AND ERIC IDLE**

BASED ON THE WORKS OF **DR. SEUSS**

SEUSSICAL FOR YOUNG AUDIENCES PREMIERED AT THE COTERIE THEATRE, KANSAS CITY,
MO: JEFF CHURCH, ARTISTIC DIRECTOR.

AT **THE BYHAM THEATER**

STARRING

BETH MALONE

ALSO STARRING

JACOB KEITH WATSON • SUSANA CORDÓN • KATE LOPREST

DARIUS HARPER • HENRY J. THOMAS

WITH

BRETT BARTHELEMY • SKY BENNETT • KRISTEN GRACE BROWN • JUSTIN DEPARIS

ZEPHANIAH DIVINE • IAN DOMINGUEZ BALL • KYLIE EDWARDS • LUCAS FEDELE

LAURA GULEY • JESSICA ICE • LINNEA MCKINNEY • DEVIN NEILSON

SAMANTH NELSON • RORY PRICHARD • BRITTANY PENT ROHM

KAI SACHON • MEGAN SELL • BB STONE • DAVIS WAYNE

SCENIC DESIGNER

J BRANSON

LIGHTING DESIGNER

PAUL MILLER

SOUND DESIGNER

GREG BROOKS

COSTUME DESIGNER

LEON DOBOWSKI

SOME COSTUMES ORIGINALLY
DESIGNED BY

GEORGE BACON

ADDITIONAL COSTUMES
DESIGNED BY

RYAN J. MOLLER

HAIR AND MAKEUP DESIGNER

JEFF KNAGGS

PUPPET DESIGNER

LISA LEIBERING

PRODUCTION STAGE MANAGER

HEATHER ANKLEY

CASTING DIRECTOR

GEOFF JOSSELSON

MUSIC DIRECTOR

CATIE BROWN

CHOREOGRAPHER

ROBBIE ROBY

DIRECTOR

MICHAEL HEITZMAN

The Director is a member of the STAGE DIRECTORS AND CHOREOGRAPHERS SOCIETY, a national theatrical labor union.

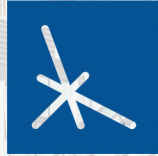
SEUSSICAL - THEATRE YOUNG AUDIENCES is presented through special arrangement with Music Theatre International (MTI).

All authorized performance materials are also supplied by MTI.

www.mtishows.com

THE VIDEOTAPING OR MAKING OF ELECTRONIC OR OTHER AUDIO AND/OR VISUAL RECORDINGS OF THIS PRODUCTION OR DISTRIBUTING RECORDINGS ON ANY MEDIUM, INCLUDING THE INTERNET, IS STRICTLY PROHIBITED, A VIOLATION OF THE AUTHOR'S RIGHTS AND ACTIONABLE UNDER UNITED STATES COPYRIGHT LAW.

Pittsburgh CLO is a founding member of the National Alliance for Musical Theatre,
Independent Presenters Network and The Broadway League.



**HEALTHCARE
REALTY**

**is proud to support
Pittsburgh CLO.**

We're the largest dedicated owner and operator of medical office buildings in the United States with \$148 million invested in over 1 million square feet across the great city of Pittsburgh. We take pride in investing in our local community.

Federal North MOB	191,610 sf
Allegheny Health Network Building	228,870 sf
Corporate One Office Park	116,260 sf
Highmark Penn Avenue Place	557,560 sf

Allegheny Health Network Building
Owned and Operated by Healthcare Realty



**HEALTHCARE
REALTY**

Corporate Headquarters

3310 West End Avenue, Suite 700
Nashville, Tennessee 37203
(615) 269-8175
www.healthcarerealty.com

Healthcare Realty Pittsburgh Office

30 isabella Street
Pittsburgh, PA 15214
(412) 321-2500



SEUSSICAL CAST

The Cat in the Hat.....Beth Malone*
 Horton the Elephant.....Jacob Keith Watson*
 Gertrude McFuzz.....Susana Cordón*
 Mayzie LaBird.....Kate Loprest*
 JoJo/The Boy.....Henry Thomas+
 JoJo (Standby).....Rory Prichard+
 Sour Kangaroo.....Darius Harper*
 Mr. Mayor.....Devin Neilson*
 Mrs. Mayor.....Laura Guley*
 The Grinch.....Kai Sachon+
 Vlad Vladikoff.....Lucas Fedele*
 Judge Yertle the Turtle.....Samantha Nelson*
 Bird Girls.....Kylie Edwards*, Jessica Ice*, Brittany Pent Rohm*
 Wickersham Brothers.....Zephaniah Divine*, Ian Dominguez Ball*, Davis Wayne*

DANCE CAPTAIN

Jessica Ice*

ENSEMBLE

Brett Barthelemy+, Kristen Grace Brown*, Justin DeParis*, Zephaniah Divine*,
 Ian Dominguez Ball*, Kylie Edwards*, Lucas Fedele*, Laura Guley*, Jessica Ice*,
 Linnea McKinney+, Devin Neilson*, Samantha Nelson*, Brittany Pent Rohm*,
 Kai Sachon+, Megan Sell*, Davis Wayne*

UNDERSTUDIES

Gertrude McFuzz - Laura Guley* | JoJo/The Boy - Rory Prichard+

SWINGS

Sky Bennett* | BB Stone*

*Members of the Actors' Equity Association, the union of professional actors and stage managers in the United States.

+Student of the Pittsburgh CLO Academy of Musical Theater.



invites you to
join us for...

London

FALL THEATRE TOUR
Sept. 23 – Oct. 1, 2024

FIVE Theatre Productions in ONE Week!
including CABARET & COMEDY OF ERRORS

TOURS of Parliament, Greenwich,
Hampton Court, National Theatre,
Westminster Abbey & more!

\$6995
per person based on
double occupancy
inclusive of airfare
and all taxes
& fees.

LAST CHANCE!





1-800-962-7325 / info@break-awaytours.com



Meet Our All-Star Cast



Audi



INFINITI



CADILLAC



MAZDA



CHEVROLET



NISSAN



BUICK



TOYOTA



HONDA



SUBARU



HYUNDAI



At #1 Cochran, our star-studded cast features 19 new car brands and thousands of preowned vehicles. Shop in store at any of our 33 locations or online with *ExpressWay* at Cochran.com.

#1 Cochran **GO 1 BETTER**
cochran.com

Official Vehicle Provider for Pittsburgh CLO




PITTSBURGH CLO ORCHESTRA

Catie Brown, *Conductor*
George Hoydich, *Musical Coordinator*

Keyboard 1.....	Catie Brown
Keyboard 2.....	Camille Villalpando Rolla
Reed 1.....	George Hoydich
Reed 2.....	Jason May
Reed 3.....	Jim Germann
Violin.....	Rebecca Neukom
Cello.....	Joe Bishkoff
Guitar.....	Ken Karsh
Bass.....	Jeff Mangone Sr.
Trumpet.....	Dave Wingenbach
Trombone.....	Bob Matchett
Drums.....	RJ Heid

The engagement of our distinguished Ensemble, for *Seussical* is underwritten through the generous support of

Joe and Kathy Guyaux



NEXT GENERATION
CAMPAIGN



KDKA **CBS NEWS PITTSBURGH** **KDKA+**

WEEKDAYS STARTING AT 4:00

Hey Pittsburgh, wish you were here? You can be.

Fly beyond Pittsburgh, into the beauty of Iceland.
Learn more at flypittsburgh.com/booknow.



PITTSBURGH
INTERNATIONAL AIRPORT



WHO'S WHO



**BETH
MALONE**



**JACOB KEITH
WATSON**



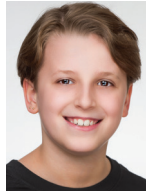
**SUSANA
CORDÓN**



**KATE
LOPREST**



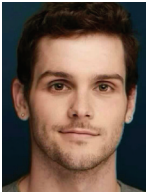
**DARIUS
HARPER**



**HENRY
THOMAS**



**BRETT
BARTHELEMY**



**SKY
BENNETT**



**KRISTEN
GRACE BROWN**



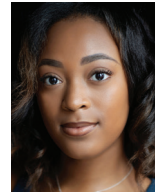
**JUSTIN
DEPARIS**



**ZEPHANIAH
DIVINE**



**IAN
DOMINGUEZ
BALL**



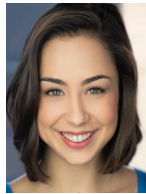
**KYLIE
EDWARDS**



**LUCAS
FEDELE**



**LAURA
GULEY**



**JESSICA
ICE**



**LINNEA
MCKINNEY**



**DEVIN
NEILSON**



**SAMANTHA
NELSON**



**RORY
PRICHARD**



**BRITTANY
PENT ROHM**



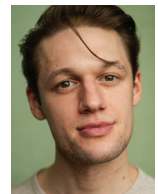
**KAI
SACHON**



**MEGAN
SELL**



**BB
STONE**



**DAVIS
WAYNE**



SEWICKLEY
ACADEMY

EXCELLENCE IN ACADEMICS, ATHLETICS, & THE ARTS



**NOW ENROLLING
FOR THE 2024-25
SCHOOL YEAR**



SWCK.LY/STAGE





MUSICAL NUMBERS

<i>Overture</i>	Orchestra
<i>Oh, The Thinks You Can Think!</i>	Cat in the Hat, Horton, JoJo, Gertrude, Mayzie, Sour Kangaroo, Mr. Mayor, Mrs. Mayor, Wickershams, Citizens of Who, and Ensemble
<i>Horton Hears a Who</i>	Horton, Cat in the Hat, JoJo, Mr. Mayor, Bird Girls, and Ensemble
<i>Biggest Blame Fool</i>	Horton, Cat in the Hat, JoJo, Gertrude, Mayzie, Sour Kangaroo, Yertle the Turtle, Mr. Mayor, Wickershams, Bird Girls, and Ensemble
<i>Here on Who</i>	Horton, JoJo, Mr. Mayor, Mrs. Mayor, The Grinch, and Citizens of Who
<i>How to Raise a Child</i>	Mr. Mayor and Mrs. Mayor
<i>Reprise: Oh, The Thinks You Can Think!</i>	Cat in the Hat and JoJo
<i>It's Possible</i>	Cat in the Hat, JoJo, and Ensemble
<i>Alone in the Universe</i>	Horton and JoJo
<i>The One Feather Tail of Miss Gertrude McFuzz / Amazing Mayzie</i>	Gertrude, Mayzie, and Bird Girls
<i>Amazing Gertrude</i>	Gertrude, Cat in the Hat, and Bird Girls
<i>Monkey Around / Chasing the Whos</i>	Vlad Vladikoff, Cat in the Hat, Horton, Sour Kangaroo, Wickershams, Bird Girls, and Ensemble
<i>Notice Me, Horton</i>	Gertrude and Horton
<i>How Lucky You Are</i>	Cat in the Hat and Mayzie
<i>Mayzie's Exit / Horton Sits on the Egg / Dilemma / Hunters</i>	Horton, Gertrude, Mayzie, Bird Girls, and Ensemble
<i>Egg, Nest, and Tree</i>	Horton, Cat in the Hat, Sour Kangaroo, Wickershams, Bird Girls, and Ensemble
<i>Sold / Mayzie in Palm Beach</i>	Cat in the Hat, Horton, and Ensemble
<i>Mayzie at the Circus</i>	Mayzie and Horton
<i>Amazing Horton</i>	Horton and Mayzie
<i>Reprise: Alone in the Universe</i>	Horton
<i>Solla Solew</i>	Horton, JoJo, Mr. Mayor, Mrs. Mayor, and Circus Animals
<i>All for You</i>	Cat in the Hat, Horton, Gertrude, and Bird Girls
<i>The Whos Return / The People Verses Horton the Elephant</i>	Cat in the Hat, Horton, JoJo, Gertrude, Sour Kangaroo, Yertle the Turtle, Mr. Mayor, Mrs. Mayor, Wickershams, Bird Girls, and Citizens of Who
<i>Yopp!</i>	Cat in the Hat, Horton, JoJo, Gertrude, Sour Kangaroo, Mr. Mayor, Mrs. Mayor, and Ensemble
<i>Reprise: Alone in the Universe</i>	Cat in the Hat, Horton, JoJo, and Gertrude
<i>Finale: Oh, The Thinks You Can Think</i>	Full Company
<i>Green Eggs and Ham</i>	Full Company

SEUSSICAL WILL BE PERFORMED WITHOUT AN INTERMISSION

North American Festival of Wales

August 28 to September 1, 2024



Call Mr. Robeson

August 28 at 7:00pm
Starring British Actor
Tayo Aluko



Opening Concert

August 29 at 7:00pm
Featuring Mal Pope,
Mared, and
2024 National Welsh
competition winners

Grand Concert

August 31 at 7:00pm
Featuring Dunvant and Brecon male voice choirs
and soloists from Wales



All at the August Wilson African American Cultural Center
Tickets: www.festivalofwales.org/tickets



WHO'S WHO - CAST

BETH MALONE (*The Cat in the Hat*) Broadway and Off-Broadway credits include *Fun Home*, (Tony Nominee), *Angels in America* (Revival), *Ring of Fire*, *The Unsinkable Molly Brown*, (Drama Desk and Lucille Lortel Award nominee, Out Critics Circle Honoree). TV credits include Series Regular on Apple TV's, *City on Fire*. *Gaslit*, (Hulu), *All Rise*, *Braided*, *Bull*, (all for CBS), *Chicago Med*, *Bluff City Law*, (NBC), *The Baker and The Beauty*, (ABC). Film credits: *tick, tick... BOOM!*, *The Comedian*, and *Brittany Runs a Marathon*. Beth is the co-book writer of the musical *Starstruck*.

JACOB KEITH WATSON (*Horton the Elephant*) is thrilled to be back at Pittsburgh CLO after previously playing Amos Hart in *Chicago*. Broadway: *Merrily We Roll Along* (Terry/Mr. Spencer), *Carousel* (Enoch Snow), *Hello, Dolly!*, *Violet*, *Amélie*, *The Phantom of the Opera*. NYC: *Oliver*, *1776*, *Mack & Mabel*, *Sweet Charity*. National tour: *Chicago* (Amos Hart). Regional: *Into the Woods* (The Baker), *Shrek the Musical* (Shrek), *Swept Away*, *The Music Man* (Marcellus). Television: *Annie Live* on NBC (Mr. Bundles) and *The Gilded Age*.

SUSANA CORDÓN (*Gertrude McFuzz*) a recent 2024 graduate at Carnegie Mellon University, Susana played Desiree in CMU's Senior Production of *A Little Night Music* and Olive Ostrovsky in CMU's *25th Annual Putnam County Spelling Bee*. Pittsburgh CLO credits include Sister Mary Robert in *Sister Act*, *Godspell*, and *A Musical Christmas Carol*. Susana can also be seen this summer as Elizabeth in Pittsburgh CLO's *Young Frankenstein* at the Greer Cabaret Theater. Gratitude to this incredible cast, Pittsburgh CLO, and her family!

KATE LOPREST (*Mayzie LaBird*) is pleased to return to Pittsburgh CLO having previously played Woman #2 in *Swing and Cosette* in *Les Misérables*. Broadway: *First Date* (Allison, OBC), *Hairspray* (Amber), *Xanadu*, *Wonderland*, *The Drowsy Chaperone*. Tour: *Wicked* (Glinda, Nessa u/s), *Little House on the Prairie* (Nellie Oleson, 1st Nat'l). Regional: The Guthrie, Asolo Rep, Old Globe, Barrington Stage, Ogunquit Playhouse, Washington National and Dallas Opera Theatre, and others. Select TV: *Law and Order: SVU* (ADA Heidi Russell), *FBI*, *Boardwalk Empire* (Corrine). For Matt Redmond, who loves this show. | [@kloprest](http://www.kateloprest.com)

DARIUS HARPER (*Sour Kangaroo*) [he/they] is thrilled to be back at Pittsburgh CLO! Past productions include *Kinky Boots* (Lola) and *Once On This Island* (Papa Ge). Some credits include: *Kinky Boots* (1st natl, Pittsburgh CLO,

Fulton Theatre), *The Book of Mormon* (1st natl), *After Midnight*. Darius was the original vocalist in Cirque Du Soleil's *Volta*, now streaming on Spotify and AppleTV. Most recently Darius was in the world premiere of *The Preacher's Wife* a new musical at The Alliance Theatre. Thank you to Billy Mason and Mark Fleischer for always saying yes! Hudson Artists Agency. | @DariusHarius

HENRY THOMAS (*JoJo/The Boy*) is an 11-year-old student of Pittsburgh CLO Academy and is excited to return to the Pittsburgh CLO stage. Prior Pittsburgh CLO credits: *A Musical Christmas Carol '22* and '23 (Wyatt Cratchit), *The Sound of Music* (Kurt von Trapp), *Kinky Boots* (Young Charlie), and *The Wizard of Oz* (Coroner). He wishes to thank his family, friends and instructors at the CLO Academy, South Park Children's Theatre, and KO Middle School for their continued guidance and support.

BRETT BARTHELEMY (*Ensemble*) just recently graduated from Lincoln Park Performing Arts Charter School as a Musical Theatre Major. Brett is very happy to be working with Pittsburgh CLO again. He was previously seen in *A Chorus Line* (Cut Dancer), directed by Baayork Lee with Pittsburgh CLO and *Titanic* (Jim Farrell) at Lincoln Park Performing Arts Center. Brett is attending PACE University in NYC in the fall of 2024, for his BFA in Musical Theatre.

SKY BENNETT (*Swing*) is elated to join Pittsburgh CLO for his 4th summer season! He has previously danced in the ensemble of previous CLO productions of *Disney's Newsies*, *Mamma Mia!*, *Grease*, *Oklahoma!*, and *Kinky Boots*. Sky also performed in the international tour of *West Side Story*, (A-Rab, u/s Action) spanning ten countries in two continents, including the show's premiere performance in India. Other appearances include *Carousel* at Riverside Theatre, and *Broadway Bares 2022*. Much love to Pittsburgh CLO, Dad, Tori, the devilishly attractive audience member reading this, and my Aleena. Pace University 2020.

KRISTEN GRACE BROWN (*Ensemble*) is thrilled to be back performing with the Pittsburgh CLO! Credits: *Anything Goes* (Pittsburgh CLO), *Chasing Rainbows: The Road to Oz* (Paper Mill Playhouse), *Elvis: A Musical Revolution* (North Shore), *42nd Street* (Broadway At Music Circus Sacramento), *White Christmas* (Bucks County), *Joseph... Dreamcoat* (Tuacahn Amphitheatre), *Mamma Mia!* (The Palace Theatre), *Little Women* (Meg,



WHO'S WHO - CAST

Kristen Grace Brown Bio Continued...

Skyline Theatre), *Elf on the Shelf: A Christmas Musical* (National Tour). BFA Musical Theatre, Syracuse University. I love you, Mom & Dad! | [KristenGraceBrown.com](https://www.kristengracebrown.com). @kriistengrace

JUSTIN DEPARIS (*Ensemble*) is thrilled to be back at Pittsburgh CLO this summer! He was last seen in *A Chorus Line* (Al DeLuca). Broadway: *Disney's Aladdin*. Other Regional Credits include: Paper Mill Playhouse, Fulton Theater, MSMT, Lyric Theater OKC, and Arts Center of Coastal Carolina. Many thanks to my loved ones, everyone at Pittsburgh CLO, and Bloc for all the years of support. Proud Florida State and Georgetown alum.

ZEPHANIAH DIVINE (*Wickersham Brother, Ensemble*) is so excited to be returning to Pittsburgh CLO this summer with the production of *Seussical*. He is a recent graduate of Texas State's Musical Theatre Class of 2024. His other credits include *Once On This Island* (PCLO), *Guys & Dolls* (PCLO), *Natasha, Pierre, and The Great Comet of 1812* (PCLO), *RENT* (Texas State). Zephaniah would like to thank his friends and family for all the constant support and love. He hopes you enjoy the show. x

IAN DOMINGUEZ BALL (*Wickersham Brother, Ensemble*) is ecstatic to be performing at Pittsburgh CLO for his first show. Point Park University graduate and now based in NYC, he has been previously worked at various theaters such as Tuacahn Center for the Arts and Tokyu Theater Orb. He would love to thank the family here at Pittsburgh CLO for giving him this huge opportunity and his friends and family for always supporting his never-ending theatre journey. | IG: @iandominguezball TikTok: @iandomingueball

KYLIE EDWARDS (*Bird Girl, Ensemble*) is thrilled to be returning to Pittsburgh CLO this summer! Kylie is a rising junior musical theatre major at Carnegie Mellon University. Her regional credits include *Dreamgirls* (The Munny), *Anything Goes* (PCLO), *Guys & Dolls* (PCLO), and *Natasha, Pierre, & The Great Comet of 1812* (PCLO). Kylie thanks her family, friends, and teachers for their continued support! | @kylie.edwards1

LUCAS FEDELE (*Vlad Vladikoff, Ensemble*) Julia Deberon Award-winner and 15-year veteran of the Pittsburgh CLO ensemble is happy to be back on the boards. Favorite Pittsburgh CLO credits include the title role in *Fiddler on the Roof*, Coricopat in *CATS* opposite Katie Terza, and most importantly the guy selling balloons at the beginning of *Kopit and Yeston's Phantom*.

TV: *Outsiders*. National tours: *Hello, Dolly!*, *Irving Berlin's White Christmas*. Regional: Arena Stage, Drury Lane, Kansas City Starlight, West Virginia Public Theatre, Pittsburgh Musical Theater, City Theatre.

LAURA GULEY (*Mrs. Mayor, Ensemble, u/s Gertrude McFuzz, Assistant Dance Captain*) is so excited and grateful to be returning to Pittsburgh CLO for her second season! Previous Pittsburgh CLO Credits: *Anything Goes*. National Tour: *Tootsie* (Sandy u/s). Select Regional: *The Music Man* (Marian u/s, Marriott Theatre); *Irving Berlin's White Christmas* (Judy u/s), *Mary Poppins* (Miss Andrews, Birdwoman u/s), *Joseph...Dreamcoat*, *Wonderland* (Mad Hatter u/s, Tuacahn); *Rock of Ages* (Waitress #1: Sherrie/Regina u/s, Engeman Theatre), *A Chorus Line* (Bebe), *The Music Man* (Zaneeta, Lexington Theatre Company). Immense gratitude to my role models - Sara, Mara, Michael, and Robbie for trusting me with this season and love always to Katie and the team at PMA, Mom, Dad, Jacob and Jilly. Penn State. | @lauraguley

JESSICA ICE (*Bird Girl, Ensemble, Dance Captain*) is a Pittsburgh native and is thrilled to be returning to the Pittsburgh CLO Stage this summer! Jessica has been seen in over a dozen Pittsburgh CLO productions, most recently *Guys & Dolls*. Other credits: *Guys & Dolls* (The Rev), *Cabaret* (Theatre SilCo), and *Elf The Musical* (Broadway National Tour). Jessica would like to thank Hunter, Mom, Dad, Josh, Liv, George, Ira, and sweet baby Penny for their support, love, and babysitting while I twirl. | @icejm

LINNEA MCKINNEY (*Ensemble*) is a senior MT major at Lincoln Park and is thrilled to be in her first professional show with so many talented artists! Her favorite roles include *Mean Girls* (Regina George) at Pittsburgh CLO Academy and *Jesus Christ Superstar* (Mary Magdalene) at Fringe Arts. Linnea could most recently be seen touring throughout Europe with Jon Anderson (lead singer of YES) as a featured and backing vocalist and guitarist. She thanks her family and coaches for their support and hopes you enjoy the show!

DEVIN NEILSON (*The Mayor of Whoville, Ensemble*) is thrilled to be making his Pittsburgh CLO debut! Tour: *CATS*. Regional: *Disney's Newsies*, *Mamma Mia!*, *Shrek the Musical*, *Charlie and the Chocolate Factory*, *Mary Poppins*, and *Something Rotten!*. Devin wants to thank his family and friends for their love and support and to always remember, "it's ok."



WHO'S WHO - CAST

SAMANTHA NELSON (*Judge Yertle the Turtle, Ensemble*) is thrilled to be back at Pittsburgh CLO for her second summer show! She is currently a sophomore at Carnegie Mellon University, she's pursuing a BFA in Musical Theatre. With a track record including two Jimmy Award nominations and performances on Broadway, Samantha's enthusiasm for this production is palpable. She's eager for audiences to join her on this journey and extends heartfelt gratitude to her family and friends for their unwavering love and support.

RORY PRICHARD (u/s *JoJo/The Boy*) is a proud student at Pittsburgh CLO Academy and Pittsburgh Ballet Theater School. Recent credits include *The Music Man* (Gracie Shinn, Pittsburgh CLO), *The Wizard of Oz, Youth Edition* (Cowardly Lion/Zeke, Pittsburgh CLO Academy), *Any Dream Will Do* (Narrator, Pittsburgh Musical Theater) As a survivor herself, Rory is also an advocate for Childhood Cancer awareness and research. Rory would like to thank her teachers, friends, and family for their incredible support.

BRITTANY PENT ROHM (*Bird Girl, Ensemble*) is delighted to spend her second summer with Pittsburgh CLO! Recent/Favorite credits include *Guys & Dolls, Frozen: A Musical Spectacular!, The Drowsy Chaperone, Into The Woods, and Sweet Charity*. Brittany is a choreographer for Cedar Fair Entertainment Company & Co-Founder of Elev  National Dance Competition. A proud graduate of Point Park University & Pittsburgh CAPA! This one is for you, Dad!

KAI SACHON (*The Grinch, Ensemble*) is a recent graduate of Pittsburgh CAPA and is continuing his education at the University of Michigan for his BFA in Musical Theatre! This year, Kai was named the 2024 Best Actor at the Pittsburgh CLO Gene Kelly Awards and was a nominee at the Jimmy Awards. Kai has had the privilege of working with Bill T. Jones at the Pittsburgh Opera in *We Shall Not Be Moved* as swing, as well as countless performances at his high school. Enjoy the show! | @kai.sachon

MEGAN SELL (*Ensemble*) is thrilled to be making her Pittsburgh CLO debut! She was last seen dancing on the Tuacahn stage in Southern Utah in *Tarzan, Charlie and the Chocolate Factory and The Hunchback of Notre Dame*. Megan has also performed onboard Disney Cruise Lines on *The Disney Fantasy* and *The Disney Wonder*, at Universal Studios, Busch Gardens and on the Today Show in NYC. Favorite regional shows include: *Shrek the Musical, Hello, Dolly!, Peter Pan, Sister Act* and

White Christmas. Special thanks to Robbie, Michael, and the rest of the Pittsburgh CLO Team for this exciting opportunity! Love to my family ~ Anything's Possible

BB STONE (*Swing*) is thrilled to return to Pittsburgh CLO after making her debut in *West Side Story* earlier this summer. Regional: *The Cher Show* (Ogunquit Playhouse, The Gateway), *Dirty Rotten Scoundrels* (Maltz Jupiter Theatre), *Disney's Newsies* (The Gateway), *All Shook Up, South Pacific, Mamma Mia!* (Flat Rock Playhouse). OCU Alum! Endless love and gratitude to her support system and her agents at The Mine. | @bbstone

DAVIS WAYNE (*Wickersham Brother, Ensemble*) is thrilled to be returning to Pittsburgh CLO for his 14th show! He was last seen in *West Side Story* and *The Music Man*. Favorite credits, Broadway: *Hadestown, New York, New York!* Tours: *Hello, Dolly!* Regional Riff in *Jerome Robbins' Broadway* (Muny), Joey in Pittsburgh CLO's production of *Sister Act*, as well as other shows at The Muny, Pioneer Theatre, North Shore, and many shows at Pittsburgh Musical Theater. Love to everyone from the front of the house to the back. | @davis_wayne

WHO'S WHO - CREATIVE

MICHAEL HEITZMAN (*Director*) Recent credits: *Frozen* at Tuacahn Center for the Performing Arts (TCA), *Disney's Beauty and the Beast, Joseph and the Amazing Technicolor Dreamcoat* starring David Archuleta, *Charlie and the Chocolate Factory* at TCA, *42nd Street* at Ordway Center for the Performing Arts and Drury Lane Theater (Jeff Award nominee, Best Director), *Disney's Beauty and the Beast* at Pittsburgh CLO, North Shore Music Theater, McCoy/Rigby Entertainment, *Disney's Newsies, Big River* and *Legally Blonde* at Broadway at Music Circus in Sacramento. *Shrek The Musical* and *Disney's The Little Mermaid* (IRNE Award nominee, Best Director) at North Shore Music Theater in Boston, and *Vices* (Jeff Award nominee, Best Director). He resides in NYC where he is the Artistic Director of Musical Development at the historic Lucille Lortel Theatre. Michaelheitzman.com

ROBBIE ROBY (*Choreographer*) previous Pittsburgh CLO productions include *Sister Act* with Tamyra Gray, and *Disney's Beauty and the Beast*. Recently, Robbie choreographed the national tour of *Hairspray* (starring RPDR's



WHO'S WHO - CREATIVE

Robbie Roby Bio Continued...

Nina West), and regional premieres of *Disney's Frozen* and *Charlie and the Chocolate Factory*. Other select productions: *Joseph... Dreamcoat* (starring David Archuleta), *The Addams Family*, *Little Shop Horrors* and *The Music Man* (Sacramento Music Circus), *Disney's The Little Mermaid* (The 5th Avenue Theatre), *Shrek The Musical* (Walnut Street Theatre), *Disney's Beauty and the Beast* (Ordway Theatre, La Mirada Theatre, Tuacahn), and *Broadway Backwards* (New Amsterdam Theatre; NYC). Since 2021, Robbie has been the Creative Supervisor for the Regent Seven Seas Splendor with NCL Creative Studios. As a performer, Robbie was the dance captain for Broadway/Touring productions of *Billy Elliot*, *Hairspray*, *Disney's The Little Mermaid*, and *Monty Python's Spamalot*.

CATIE BROWN (*Music Director, Conductor*) is a Pittsburgh-based Music Director, Educator, and Musician. Currently: Staff Accompanist at Carnegie Mellon University's School of Drama, Instructor at CMU-SOD Pre-College, Instructor at Pittsburgh CLO Academy, and Music Director at All Saint's Parish (Butler, PA). Regional theater work: Pittsburgh CLO, Pittsburgh Public Theater, R.W.S. and Associates, Pittsburgh Playhouse, Pittsburgh Musical Theater, Lincoln Park Performing Arts Center, St. Vincent Summer Theater and several Broadway National Tours. Catie has had the privilege of accompanying Stephen Schwartz, Jeanine Tesori, David Yazbek, Stephen Flaherty and many others. M. Ed. Educational Leadership (University of Cincinnati). B.M. Music Education (Slippery Rock University).

J BRANSON (*Scenic Designer*) has been a Chicago-based for more than 30 years, working coast to coast and in Canada. National tour credits: *The Music Man*, *Disney's Beauty and the Beast*, *Brigadoon*, and *Chitty Chitty Bang Bang*. Regional premieres: *The Hunchback of Notre Dame*, *A Christmas Story*, *Hairspray*, *Mary Poppins* and *Disney's The Little Mermaid*. Other regional work: *Smokey Joe's Café*, *Forever Yours*, *Patsy*, *Jekyll & Hyde*, *Nunsense*, *Sunset Boulevard*, *Assassin's* and *Chess*.

PAUL MILLER (*Lighting Designer*) 8 Seasons at Pittsburgh CLO. Internationally, Paul's work has been seen on stage at the Stratford Festival, London's West End, Vienna, Teatro alla Scala (Milan), South Africa, China, Manila, Iceland and São Paulo. On Broadway, he has designed 5 musicals and been the Associate/Assistant on 22 others. Notable Off-Broadway favorites include: *Desperate Measures*, *Clinton!*,

Pageant, *Vanities - the Musical*, *Waiting for Godot*, *Nunsense*, *Encores!* (9 shows). National Tours: *Hairspray*, *Elf*, *Wizard of Oz*, *Sweeney Todd*, *The Producers*, *RENT*, *Shrek*. Regional: Arizona Theatre Company, The Old Globe, Dallas Theater Center, Chicago Shakespeare, Idaho Shakespeare, Asolo Rep, ACT, Cleveland Playhouse, Pasadena Playhouse, Goodspeed, and others. Television: *Evil* (CBS&Paramount+), *Live from Lincoln Center*, more than 20 Netflix specials, and the internationally televised *New Year's Eve Celebration from Times Square* (for 25 years).

JEFF KNAGGS (*Hair and Makeup Designer*) is a proud pug daddy and has been working in theatre for 25 years. After designing the 25th Anniversary *Mamma Mia!* tour, he has returned to Royal Caribbean to design four shows, including *The Wizard of Oz*. For The Engeman Theatre, he has designed *Beautiful*, *Disney's Beauty and the Beast*, *Jersey Boys*, and *Margaritaville*. For NCL he has designed *Kinky Boots*, *Footloose*, *SIX*, and *After Midnight*. Royal Caribbean: *Hairspray*, *Flight: Dare to Dream*. *The Silk Road*, *Showgirl!*, *The Effectors*. Pittsburgh CLO: 2017, 2018, 2019, 2022, and 2023 Seasons. TUTS: *Memphis*, *Dreamgirls*, *Into the Woods*, *How to Succeed...*, *The Rocky Horror Show*, *Million Dollar Quartet*, *Heathers*, *Mary Poppins*, *Sweet Potato Queens*, *Bonnie & Clyde*, *A Christmas Story*, *The Music Man*. Theatre Aspen: *Beautiful*. Regional: *Mamma Mia!*, *Peepshow*, *Young Frankenstein*, *Disney's The Little Mermaid*, *Dancing With The Stars*, *America's Got Talent*, *Rica's Got Talent*, and *Into the Woods* at The Hollywood Bowl.

LISA LEIBERING (*Puppet Designer*) is a freelance theatrical designer/builder, an active member of IATSE Local 787 Wardrobe Union, and an Assistant Professor of Costume Design and Technology at Seton Hill University. She holds a BFA in Puppetry/Children's Theatre from West Virginia University, an MA in Theatre for Youth from the University of Wisconsin-Madison, and an MFA in Costume Design from the University of Idaho.

GEOFF JOSSELSO (*Casting Director*) is a New York-based casting director, handling productions for theatre, film and television. Recent work includes productions for Arena Stage, Actors Theatre of Louisville, Baltimore Center Stage, Cape Playhouse, Denver Center, Ensemble Studio Theatre, The Irish Repertory Theatre, Merrimack Rep, Oregon Shakespeare Festival, Paper Mill Playhouse, Pittsburgh CLO, Pittsburgh Public Theatre, Repertory Theatre



WHO'S WHO - CREATIVE

of St. Louis, Round House Theatre, Seattle Repertory Theatre, Theaterworks Hartford, and Weston Playhouse.

HEATHER ANKLEY (*Production Stage Manager*) has worked professionally as a stage manager for more than 25yrs. Her body of work includes: Pittsburgh Public Theater: *A Midsummer Night's Dream In Harlem*, *Something to Live For* (WP), TUTS: *Ain't Misbehavin'*, *RENT*. Pittsburgh CLO credits span 9 seasons, and include: *Double Threat Trio* (WP), *Peter Pan*, *Sister Act*, *Game On* (WP), *In The Heights*, *Disney's Beauty and the Beast*, *Disney's Newsies*, *Kinky Boots*, *A Chorus Line*, and *A Musical Christmas Carol* (9yrs). The REP: *Scottsboro Boys*, *Wig Out!*, *Choir Boy*, *Souvenir*. PICT: *Merchant of Venice*. Pittsburgh Opera: *Marriage of Figaro*, *Falstaff*, *Dead Man Walking*, *Grapes of Wrath*. Proud member of AEA and IATSE #3.

LYNN AHRENS (*Book, Lyrics*) won Tony, Drama Desk and Outer Critics Circle Awards and received two Grammy nominations for Broadway's *Ragtime*. For Twentieth Century Fox's animated feature film *Anastasia*, she was nominated for two Academy Awards and two Golden Globes. She and longtime collaborator Stephen Flaherty received the Oscar Hammerstein Award for Lifetime Achievement, and in 2015 they were inducted into the Theater Hall of Fame. Broadway: *Anastasia*; *Once On This Island* (Olivier Award, Best Musical; Tony nominations, Best Book and Score); *Seussical The Musical* (Grammy nomination); *My Favorite Year*; *Chita Rivera: The Dancer's Life*; *Rocky*; *Madison Square Garden's A Christmas Carol*; *Ragtime* (2010 Broadway revival). Off-Broadway and regional: Lincoln Center Theater's *Dessa Rose*, *The Glorious Ones* (both Drama Desk-nominated) and *A Man of No Importance* (Outer Critics Circle Award, Best Musical); *Lucky Stiff*; *Little Dancer* (Kennedy Center world premiere). Film and television credits include *A Christmas Carol* (NBC-TV); *Camp* (IFC Films); *Schoolhouse Rock* (ABC-TV) and others. (Emmy Award and four Emmy nominations). She is a Council member of the Dramatists Guild of America, a co-founder of the Dramatists Guild Fellows Program, and a Lilly Award winner for Lyrics. | www.ahrensandflaherty.com

STEPHEN FLAHERTY (*Book, Music*) is the composer of the Broadway musicals *Ragtime* (Tony, Drama Desk, OCC Awards, two Grammy nominations), *Seussical The Musical* (Grammy, Drama Desk nominations), *Once on This Island* (Tony nomination, Olivier Award, Best Musical) and *Rocky*. Additional Broadway includes *Chita*

Rivera: The Dancer's Life (original songs) and Neil Simon's *Proposals* (incidental music). Stephen has also written four musicals at Lincoln Center Theatre: *The Glorious Ones* (OCC, Drama Desk nominations), *Dessa Rose* (OCC, Drama Desk nominations), *A Man of No Importance* (OCC, Best Musical, Drama Desk nomination) and *My Favorite Year*. Other theater includes *In Your Arms* (Old Globe), *Little Dancer* (Kennedy Center), *Lucky Stiff* (Playwrights Horizons) and *Loving Repeating: A Musical of Gertrude Stein* (Chicago's Jefferson Award, Best New Musical.) Film includes *Anastasia* (two Academy Award and two Golden Globe nominations), the documentary *After The Storm* and *Lucky Stiff*. Mr. Flaherty's concert music has premiered at the Hollywood Bowl, Boston's Symphony Hall, Carnegie Hall, the Guggenheim Museum and Symphony Space. This year celebrates Stephen's 32-year collaboration with lyricist-librettist Lynn Ahrens. Stephen and Lynn are members of the Dramatists Guild Council and co-founders of the Dramatists Guild Fellows Program. In 2015 they were inducted into the Theater Hall Of Fame. | AhrensAndFlaherty.com.

MUSIC THEATRE INTERNATIONAL (*Licensing*) is one of the world's leading theatrical licensing agencies, granting theatres from around the world the rights to perform the greatest selection of musicals from Broadway and beyond. Founded in 1952 by composer Frank Loesser and orchestrator Don Walker, MTI is a driving force in advancing musical theatre as a vibrant and engaging art form. MTI works directly with the composers, lyricists and book writers of these musicals to provide official scripts, musical materials and dynamic theatrical resources to over 100,000 professional, community and school theatres in the US and in over 150 countries worldwide. MTI is particularly dedicated to educational theatre, and has created special collections to meet the needs of various types of performers and audiences. MTI's Broadway Junior™ shows are 30- and 60-minute musicals for performance by elementary and middle school-aged performers, while MTI's School Editions are musicals annotated for performance by high school students.

MARK FLEISCHER (*Executive Producer*) serves as the artistic and administrative head of the Pittsburgh CLO producing the company's 6-show summer season, Kara Cabaret Series and its annual production of *A Musical Christmas Carol*. Mark's passion for developing



WHO'S WHO - CREATIVE

Mark Fleischer Bio Continued...

new musicals led to the creation of CLO's SPARK Festival initiative to develop new small musicals – a program made possible by the CLO's Next Generation Capital Campaign. Prior to joining the CLO, Mark was the Producing Artistic Director of Adirondack Theatre Festival from 2007–2014 where he was named the Region's Best Artistic Director by Metroland in 2009. From 1993–2002 he served as the Managing Artistic Director of Plano Repertory Theatre in suburban Dallas. With a passion for new plays and musicals, he has directed readings and world premiere productions for theatres across the country. He is a Board Member of the National Alliance for Musical Theatre (NAMT), chairing the organization's Educational Resources Committee and is also a member of The Broadway League where he serves on the Intra-Industry committee. Mark holds a BA in English Literature and Communication Arts from Austin College and MFA in Directing from the Theatre School at DePaul University.

PITTSBURGH CLO (*Producing Company*) has been the driving force for 78 years behind the preservation, creation and promotion of live musical theatre since 1946. Founded in the years following WWII as a way to bring Pittsburgh together for a community experience, the company has grown to become one of the largest regional musical theatre organizations in the country. The organization's commitment to preserving, creating, and promoting live musical theatre is evident in its diverse programming, which includes beloved Broadway classics as well as the development of new works. PCLO's dedication to nurturing emerging talent is commendable, with numerous artists (Billy Porter, Renée Elise Goldsberry, Rob Marshall, Kathleen Marshall, Shirley Jones and many more) launching their careers under its wing. The mission extends beyond the 6 show summer series with other ongoing initiatives such as the Pittsburgh CLO Academy of Musical Theatre, the Construction Center for the Arts, the acclaimed Gene Kelly Awards for Excellence in High School Musical Theater and The National High School Music Awards (The Jimmys). Every ticket purchased impacts our own hometown, Pittsburgh, in a variety of ways beyond the stage performance. Pittsburgh CLO has always been a proud economic generator, hiring local theatre professionals to bring the best musical theatre to life. Since 1946, loyal Patrons, Subscribers, and Donors have stood beside our organization

to ensure production of Broadway caliber shows right here in our hometown. Pittsburgh CLO is excited to continue creating magical musical memories that are by Pittsburgh, for Pittsburgh and partnered with Pittsburgh all year long! For more information, please visit PITTSBURGHCLO.ORG

Pittsburgh CLO
CELEBRATING MUSICAL THEATER

GOT A GROUP? GET A DEAL!
GROUPS OF 10+

Gather your friends, family or co-workers and discover the benefits and experience the theater together! It's easy to organize your group. We'll give you all the tools that you need to give your group the special treatment it deserves.

ORDER ONLINE, Call 412-263-2560
OR GROUPS@PITTSBURGHCLO.ORG

Pittsburgh CLO
CELEBRATING MUSICAL THEATER

TO ADVERTISE
IN PROGRAM BOOKS:

412-471-1497
advertising@culturaldistrict.org



A Pittsburgh legend returns

Fine Southern Italian fare

Seeped in the charm and bounty of the Mediterranean

TERRACE ROOM



OMNI WILLIAM PENN HOTEL

Thursday | Friday | Saturday

5 - 9 pm

+1 412.553.5235

PRE-SHOW DINNER

Join us before the show for a prix fixe menu
\$55* | Salad (appetizer Caesar or house), an entrée
(pappardelle, chicken or branzino) and choice of one dessert

*Price is per person and excludes tax and gratuity.



THANK YOU TO OUR PCLO DONORS

ACT 2 IS MADE POSSIBLE BY YOU!

Thank **YOU** for your philanthropic support of the Pittsburgh CLO's Annual Campaign and Education Campaign (through **JULY 22, 2024**).

Our family of Pittsburgh CLO donors plays a critical role in advancing our mission to celebrate live musical theater **made by Pittsburgh, for Pittsburgh, and in partnership with Pittsburgh**. From breathtaking musicals produced in our hometown to inspiring creative and youth-arts initiatives, your generosity keeps breathtaking musical theatre affordable and accessible to everyone in our community.

DONOR KEY: IMO: In Memory Of | IHO: In Honor Of | (): Number of Years

THE PITTSBURGH CLO IS GRATEFUL FOR THE GENEROUS SUPPORT PROVIDED BY THE PITTSBURGH CULTURAL TRUST

CORPORATIONS

DIAMOND CIRCLE

\$25,000 AND ABOVE

#1 Cochran (18)
Dollar Bank (23)
Healthcare Realty (8)
Highmark (32)
Howard Hanna
Real Estate Services (14)
Omni William Penn Hotel (15)
PNC (70)

GOLD CIRCLE

\$10,000 - \$24,999

Baird (29)
Chubb Group of Insurance
Companies (14)
Deloitte, LLP (17)
Delta Air Lines (8)
Educational Opportunities LLC
Giant Eagle, Inc. (20)
KeyBank (12)
Koppers (14)
Pittsburgh Steelers (3)
The Frank E. Rath - Spang &
Company Charitable Trust (45)
ReedSmith (18)
UPMC (21)
Williams Coulson Johnson Lloyd
Parker & Tedesco, LLC (1)

SILVER CIRCLE

\$5,000 - \$9,999

84 Lumber (3)
Alco Parking (19)
AON (4)
Ernst & Young (26)
Federated Investors
Foundation, Inc. (16)
First National Bank (2)
K&L Gates, LLP (17)
KPMG (20)
MSA Safety (58)
TriState Capital Bank (3)

EXECUTIVE PRODUCER'S CIRCLE

\$2,500 - \$4,999

AI Solutions
Champ Printing Company (9)
Eat'n Park Hospitality Group (1)
Enkompas Technology Solutions (2)
Development Dimensions
International (12)
Littler Mendelson, P.C. (2)

Post & Schell (10)
PwC (8)
Saul Ewing Arnstein
& Lehr, LLP (6)
Schneider Downs (23)
Specialty Conduit & Manufacturing
Tudi Mechanical Systems (3)

PRODUCER'S CIRCLE

\$1,000 - \$2,499

Ampco-Pittsburgh
Charitable Foundation (30)
Bender Leadership Academy (5)
Confluence Financial Partners (2)
Diamonds by Rothschild (2)
Assured Partners of PA (21)
HHM Insurors (19)
Mars Bank (8)
McGrath McCall, P.C. (3)
Sitko Bruno, LLC (4)
Tomayko Group Holdings
Tudi Mechanical Systems (3)

FOUNDATIONS

Bozzone Family Foundation
The Jack Buncher Foundation
The Charity Randall Foundation
The Anne L. and George H. Clapp
Charitable and Educational Trust
Cooper-Siegel Family Foundation
Edith L. Trees Charitable Trust
Ganassi Foundation
The Grable Foundation
The Heinz Endowments
Irene C. Shea
Charitable Foundation
Helen M. Knepper Memorial Fund
of The Pittsburgh Foundation/
Community Foundation of
Westmoreland County
Massey Charitable Trust
Founders: Harris B. Massey
and Doris J. Massey
McKinney Charitable Foundation
Milton G. Hulme
Charitable Foundation
The Vernon C. Neal
and Alvina B. Neal Fund
W.I. Patterson Charitable Fund
Pauline Pickens Charitable Trust
Richard King Mellon Foundation
Robert and Mary Weisbrod
Foundation
The Falk Brothers Fund

PUBLIC SUPPORT

Allegheny Regional Asset District
ARP-NEA-Grants to the Arts
Pennsylvania Council on the Arts
Small Business Administration
Shuttered Venue Operators
Grant Program

GENE KELLY PRODUCERS SOCIETY

*PCLO's Gene Kelly Producer's Society
is a community of remarkable
philanthropists who share an
extraordinary commitment to
Pittsburgh CLO.*

TITLE PRODUCERS

\$25,000 AND ABOVE

Dan and Debby Booker (36)
Stephen and Helen
Hanna Casey (33)
Joan Clark Davis (26)
The Estate of Eleanor Dragan (16)
Dolores Kara
IMO Michael J. Kara (24)
John Keith Maitland Fund of
The Pittsburgh Foundation/
Community Foundation of
Westmoreland County (47)
Robert C. McCarty (42)
The Estate of Reverend
Thomas A. Wagner (30)

LEAD PRODUCERS

\$15,000 - \$24,999

Hal and Kimberly Burch (8)
Gus and Annie Hanna Engel (6)
Joe & Kathy Guyaux (23)
Edward T.
and Suzanne F. Karlovich (21)
Bill & Sandy Lambert
IHO our daughters:
Emily & Kelly (24)
Jim and Lisa McQuade (6)
Carol H. Tillotson
IMO Anne C. and
Arthur R. Hefren (15)
Mr. and Mrs. Alexander
Overstrom (4)
Ava Wilson (7)

EXECUTIVE PRODUCERS

\$10,000 - \$14,999

Barbara Chait
IHO Van Kaplan (6)
Joe & Karen DiVito (13)
Mr. and Mrs. Peter J. Germain (19)

THANK YOU TO OUR PCLO DONORS

ACT 2 IS MADE POSSIBLE BY YOU!



EXECUTIVE PRODUCERS CONT'D...

Deedra Knaus (8)
 Bryson and Meg Lesniak (1)
 Mark & Diane Minnaugh (20)
 Specialty Conduit
 & Manufacturing, LLC (14)
 Glenn & Stephanie Todd (9)

PRODUCING DIRECTORS

\$5,000 - \$9,999

William P. Anderson (24)
 Mrs. Patti Matty Blenko
 IMO Walter Blenko (42)
 Kim & Curt Fleming (24)
 George and Daphna Gans (7)
 Patrick A. Gray (5)
 Emilie Hammerstein (1)
 Vicki C. Henn (8)
 Michael and Evonne Henry (6)
 Leslie Hyde (5)
 Bryson and Meg Lesniak (1)
 Nicholas and Anne Liparulo (11)
 Mr. Allyn J. Lynch (11)
 The Malandro Family (5)
 Tim McVay and David Bush (5)
 Jim and Lisa McQuade (7)
 Robert and Christine
 Pietrandrea (10)
 Luke and Allison Sizemore (10)
 Arlene & Barry Sokolow
 IMO Anna & Nicholas Zerkovic (21)
 Specialty Conduit &
 Manufacturing, LLC (14)
 Justice Debra and Stephan Todd (16)
 Gary and Debbie Truitt (21)
 Dennis and Diane Unkovic (15)
 Travis and Nikki Viglione
 Williams (8)
 James R. Wiltman (19)

PRODUCERS

\$3,000 - \$4,999

Anonymous
 Pritam and Binu Advani (6)
 Dr. Vitasta Bazaz-Sheeh Sehgal -
 Fund IMO Dr. Kuldeep Sehgal of
 The Pittsburgh Foundation (21)
 Stephen and Dana Bloomberg (10)
 Dr. Kerry Bron and
 Mr. Robert Levin (2)
 Adam and Patricia Davidson (19)
 George and Ada Davidson (40)
 Phyllis and Tom Davidson (2)
 Joy Dawso (15)
 Jane & Michael Dixon
 IMO Cheryl Young (24)
 Mr. and Mrs. Richard Dougherty (8)
 Cathy and Randy Emanuelson (6)
 Jeff and Jennifer Erdely (3)
 Dr. Edward L. Foley (25)
 David and Deborah Freeman (12)
 Gary and Michele Gatto (3)
 Richard S. Hamilton Foundation (22)
 Mr. & Mrs. Robert A. Harlan (23)
 Greg and Debbie Knowles (9)
 Brian and Suzanne Koble (3)

Tom & Chris Kobus (27)
 Cher Kotovsky
 IMO Irwin Kotovsky (3)
 John and Lisa Lemmex (6)
 Dr. Diane Beynon Landers (10)
 Richard and Lynn Lipovich (9)
 Raymond & Karen Love (22)
 John & Cathy Mary (12)
 Margaret A. McLean
 and Stanley Yorsz (11)
 Michael and Wanda McGarry (9)
 Janice and Ernie Meade (11)
 Ed and Deb Moretti (8)
 Kari Murphy (1)
 Laurie Burkhart Mushinsky (20)
 Jordan and Laura Nicholas (7)
 The O'Loughlin Family
 Charitable Fund (23)
 Leah and Paul Ohodnicki (15)
 Christina O'Toole
 IMO Paul & Helen Triko (13)
 Jean Marie Perry (10)
 Bob Powell (5)
 Robin Randall (4)
 Barbara Riehle (1)
 Mike Rizzo (1)
 Roseann Rosnick (4)
 Jim and Linda Rumbaugh (3)
 Eric and Michele Schaffer (18)
 Randi L. Starr (8)
 Mark and Tammy Steele (28)
 Marcia and Louis Swartz (8)
 Joan L. Tissue (9)
 Elizabeth Toole
 IMO Mrs. Michael Kutsenkow (4)
 Melissa Ungar (13)
 Mr. & Mrs. William H. Van Duzer (25)
 Tom and Lynne VanHimbergen (4)
 Mr. Richard J. Voller
 IMO Debra J. Voller (37)
 Matt Williams
 in loving memory of
 Teresa and Robert Williams (23)
 Mr. & Mrs. W. Robert Wells (36)
 Dr. Audrey Zerkovic
 IMO Anna & Nicholas Zerkovic (12)
 Tim & Linda Zimmerman (35)

ASSOCIATE PRODUCERS

\$1,500 - \$2,999

Anonymous
 Tripp and Nancy Amick (7)
 Jen Bohland-Anhalt
 & Joshua Anhalt (15)
 Michele and Pat Atkins (3)
 Meghan and Jose Barrera (10)
 Elaine M. Bellin and Phyllis D. Coontz
 IHO Patty Maloney (7)
 Joyce Bender (9)
 Anthony Benevento (1)
 Beatrice Bonfiglio
 IMO Alfred Bonfiglio (26)
 W. Dennis and Penny Bossick (3)
 Carolyn Bouchard (1)
 Felicitas Caracoche (4)
 James P. Cassaro (6)

Stacy and Christopher Dee (12)
 Teresa and Christian Fails (1)
 Wynne Rooney Fedele
 IMO George W. Rooney, Jr. (17)
 Theresa B. Fedio (24)
 Holly and Mark Fleischer (4)
 Warren R. Fugate (5)
 Mrs. Lori Giordano-Bosiljevac (3)
 Richard S. Hamilton Foundation (22)
 The Howe Family (5)
 Drs. Martha and Lawrence John (9)
 Christy Kobus (11)
 Greg and Debbie Knowles (9)
 In loving memory of
 Dr. Susan Cohen
 (from Christy and Aaron Kolko) (5)
 Angela and Scott Langill (2)
 Fred and JoEllen Leech (9)
 Jamie McGovern (3)
 Brandon Marzke (2)
 Marcia Metelsky (2)
 Marcia S. Morton (51)
 Scott & Jennifer Neill (21)
 Randall Olson (11)
 William and Audia Otto (15)
 Paul and Paula Palmer
 In Honor Of Charlie Gray
 and Van Kaplan (21)
 Elisa and Terry Poole (2)
 Dawn Predmore
 and Patrick Putorti (1)
 Susie and Jerry Robinson (25)
 Eric and Michele Schaffer (18)
 Ken and Toni Senatore (33)
 George and Helen Spalaris (11)
 Sterling Family Fund of
 The Pittsburgh Foundation (11)
 Betsy and Tom Teti
 IMO Charles and Anne Lynn (26)
 LaShawnda A. Thomas (3)
 Carla J. Vrsansky, Esq. (19)
 Sally Wade (37)
 Bob Williams (23)

MEMBER DONORS

PATRONS

\$500 - \$1,499

Anonymous
 Anonymous
 IHO Dan and Debby Booker (3)
 Kathryn and James Bann (9)
 Jim Bobenage (1)
 Charles & Shelly Bossong
 IMO Charlotte (25)
 Debbie Boughner
 IMO Jim Boughner (5)
 Ellen Carabin (14)
 Ms Nanette Catarinella
 IMO Roland Catarinella (65)
 Heather M. Chappars (14)
 Mrs. Clare Donahue
 IMO Thomas M. Donahue (10)
 Mr. and Mrs. Richard Dougherty (9)
 Merrill and Theresa Druggs (20)
 Carl Dudeck, Jr. (14)



THANK YOU TO OUR PCLO DONORS

ACT 2 IS MADE POSSIBLE BY YOU!

PATRONS CONT'D...

Brian and Tricia Eccher (3)
Elias Fedele (3)
Jeffrey & Karen Fink (28)
Galatis Family (3)
Marlene Goldstein
IHO Sharon Goldstein (2)
Charlie and Patricia Gray
IHO the administrative
and production staffs (34)
Rev. Dr. James R. Gretz (38)
Andrew and Darlene Hasley (3)
Richard and Ruth Ann Hess (57)
MAC and George Hoover (6)
Donna and Keith Impink (1)
Kendra Whitlock Ingram
and Ben Ingram (1)
Jeff Irwin, D.D.S (37)
Tom and Cathie Johnson
IHO Elizabeth J. Kindelberger (8)
Briana and Jeff Kent (3)
Arthur Kerr (44)
Diana M. Kobus (5)
The J & MA Krolikowski Fund (12)
Darren and Linda Leonard (16)
Michael Leonard (1)
Milan Markovich (2)
Paul C. McBeth, III (4)
Jacquelin A. McCauley (11)
Dr. & Mrs. Brendan McGuire (6)
Richard and Nancy McKnight (35)
Catherine Mechling (26)
Mrs. Joan Milsom (22)
Jeff & Patty Nayhouse (23)
Mr. & Mrs. Richard L. Neish (13)
Mr. and Mrs. James O'Neill (25)
David & June Nimick (27)
Deerfield Nimicks (5)
Todd and M'Lisa Oravitz (4)
Steven and Helen Patricia (16)
Rose M. Perryman (22)
Christopher and Mary Rawson (11)
Leslie and Peter Robinson (17)
Iva and Gene Saraceni
IHO our daughter,
Elyse Jeanne Saraceni (14)
Susan Sargent (10)
Gregg Schmidtetter
and Lisa Gavlik (2)
Bob and Lori Shelow (6)
Martin Signore (1)
Jerald and Bonnie Solot (1)
Richard Stewart (5)
The Stoffel Family
IHO Dale Stoffel (10)
Caitlin Stritmatter (1)
Reverend James R. Torquato (13)
Charles and Sue Turner (33)
Michael and Lisa Walsh (22)
Ramona Ward (4)
Mr. and Mrs. Thomas E. Wash (17)
Henry and Rosemarie Wetzel (9)
Mr. and Mrs. Robert W.
Wickerham (34)
Julie Wiles (9)

Mr. John C. Williams, Jr. (29)
Patti and Randy Wynkoop (14)

SPONSORS

\$250 - \$499

Anonymous
Anonymous
IHO Mary Helen Fuhrer
and Frank Fuhrer
Dr. & Mrs. Lee Agostini (32)
Joann S. Anderson (14)
Pamela Andreyko (2)
Nancy Arshoun (5)
Mary and Len Bach (9)
Dr. and Mrs. Ivan Baumwell (11)
George Bielich (7)
Joan Margaret Blasinsky (13)
Michael and Carol Bleier (21)
Robert C. Blough, Jr. (7)
Pamela Bolkovac (11)
Jean-Pierre Bonasso
IHO Stephanie Krick (1)
Michelle and George Bonnar (2)
Dale and Leigh Booker (7)
Kathleen Boykin (33)
Myron and Jeanne Caplan (1)
Kathy Charochak (1)
Tom and Dale Christopher (20)
Mr. Edward E. Clever
IHO Barbara J. Clever (15)
Tom, Liz & Shannen Cloherly (4)
Michele Rone Cooper (19)
Steve Cuden
IHO Leon Zionts (5)
Bob and Judy Cunningham (1)
Stacey Daily
IHO John Daily (3)
Alice DeCaria (2)
James and Theresa Doerfler (22)
Steven Doerfler (6)
Jeanne Drennan (3)
John Dreistadt (3)
Dr. Peggy Farrah
IHO brothers, Sonny
& Bobby Farrah (13)
Craig and Cynthia Flanagan (2)
Margaret Figgins
IHO David F. Figgins (44)
Robert and Helen Fitzgibbon (7)
Mr. Gene S. Forsythe (12)
Mr. and Mrs. Edward
Fortwangler (13)
Katherine and John Freed (14)
John and Elaine Frombach (5)
Ben and Michelle Gallagher (3)
John and Sandy Gandolfi (5)
Alvaro and Sandra
Garcia-Tunon (17)
The Clem Gigliotti Jr. Family (14)
Mr. & Mrs. Kurt Gottschalk (19)
David Gotwald & Peter Franzen (2)
Carolyn Grant (1)
Mr. and Mrs. William Greb (10)
Joann and Anthony Grieco (18)
Robert D. Harrison (6)
Amy and Paul Hoback (9)

Mr. and Mrs. Ben Andrew Huber (4)
Russell W. Johnson
IHO Eileen B. Johnson (3)
Dr. & Mrs. Robert T. Jones, Jr. (35)
Ms. Sherdina Jones (6)
Dr. Chris & Mrs. Emily Kaufmann (5)
Mary Kellam
IHO Robert C. Milsom (5)
Mr. and Mrs. William B. Kent
IHO Peggy Paul (8)
Gary and Betty Kessler (14)
Maria Kovacs (8)
Emily Lambert (3)
Jeff and Teri Lammert (1)
Richard and Victoria Lapishka (1)
Joan E. Lavery
IHO John P. Lavery (24)
Mr. and Mrs. Shawn Leifheit (13)
Mr. and Mrs. Craig C. Linner (2)
David M. and Joyce E. Lipkin (9)
Margery J. Loevner (4)
Jennifer Long (4)
Mr. & Mrs. Robert Madar (21)
Kay Manecke (10)
Richard Marciniak (18)
Dr. and Mrs. James McCann (13)
Mr. and Mrs. Samuel McClure (12)
Dr. Graham
and Elizabeth McIntosh (7)
Dr. Amy Mehta (1)
Mary Ann and Terry Mohr (12)
Carroll and David Morrison (11)
Ms. Bonita Mullaugh (12)
The Murray Family (9)
Tim and Carol Murray (8)
David & June Nimick (27)
William and Audia Otto (15)
Chris and Diana Patella (1)
David B. Patrick (1)
Ms. Lynley Pavkovich (5)
Warren and Sharlene Pirring (11)
Dave and Meg Rauth (3)
Edward and Anna Marie Rice (19)
Mona and Bob Riordan (28)
John and Joni Roland (14)
Don & Mary Rugh (24)
Mrs. John M. Sadler (11)
Paul Schamer (10)
Mary Seghi (25)
Ronald and Linda Siegel (3)
Josh and Patricia Sivitz (2)
Ann K. Shaner (5)
Ira and Lucy Snyder
IHO Allan Snyder (7)
Susanne and Ron Sommer (12)
Mr. & Mrs. Marlis Stacy (9)
Mr. and Mrs. David R.
Steinberg (24)
Jody Stockdill (2)
Cait and Spencer Sturgeon (3)
Robert and Vonnie Teagarden (5)
Gayle Tissue
and Yiannis Kaloyeropoulos (2)
Stephanie Veenis (2)
Nancy and Will Willems (12)
Al and Peg Williams (3)



THANK YOU TO OUR PCLO DONORS

ACT 2 IS MADE POSSIBLE BY YOU!

SPONSORS CONT'D...

Janice Wirth (15)
Gary and Diane Workman (7)
Tom Wyse, Jr.
and Robert A. Neft (27)

LIMELIGHTERS

\$100 - \$249

Anonymous

Anonymous

IMO Agatha Anonymous

IMO Richard S. Mowl Jr.

A. L. Abramovitz (9)

Kathryn Adams

IMO Forbes Adams (2)

John Aiello (7)

Kelly J. Albenze (1)

Dorcas Alexander

IHO Robert Alexander (1)

Ted and Donna Alexovich (7)

Elizabeth R. Amber

IMO Wayne Amber

& James Emswiller, CAS (11)

Charles and Veronica Anchors (13)

Mr. and Mrs. Anderson (1)

Sandy Artzberger (4)

George W. Ayres IMO

Joyce Davis Smith (6)

Debra Baldesberger (9)

Leroy and Ginger Ball (4)

Colleen Balsano (1)

Laura Barry

IHO The Awesome CLO Staff (10)

Dave and Trish Bartlett (1)

Mr. Gerald Bartolomucci (5)

Diane Berquist

IMO Michael J. Berquist, Esq. (5)

Kirk F Betteridge (1)

Jody Bishop (1)

Mr. David Blackmore (20)

Paul E. Block (23)

Michael Blow (1)

Cesare and Anita Shaw Brogneri

IMO Our Parents (1)

Sharon Bono (1)

Fran and Harvey Borovetz (1)

Dale and Leigh Booker (7)

Mr. and Mrs. Dale Booker (7)

Michael and Maxine Botti

IHO Mike Botti (7)

Dorothy L Boyer (1)

Scott Branvold

and Lynda Davidson (12)

Elizabeth Brokaw (1)

Emily Brooks (1)

The Brown Family (4)

Mary Ann Brown (2)

Mary Patricia Brown (16)

Mr. and Mrs. Steve Brown (3)

Mr. and Mrs. Edward E. Brunins (9)

Mr. Russ Carley (1)

Dan and Doreen Casey (9)

Helen Cestra (1)

Chris Chaney (1)

Vanessa Chapman (2)

Frank and Theresa Cicci (3)

Gary and Jo Ann Claus (31)

Nat and Diane Cohen

IHO Jim Mercer (19)

Erin Cook (1)

Ruth and Carl Crowe (2)

Fred and Joy Cullen (10)

Catherine M. Daily

IMO Hazel P. Daily (29)

Stacey Daily

IMO John Daily (2)

George and Kathleen Daniels (7)

Steve Daquilanto (2)

Michael Davidow (1)

Dr. and Mrs. Tim DeBiasse (12)

Laura DeDi (1)

Michele DeGrazia (1)

Diane Deluca (2)

Peter and Melba Dibble (4)

Nick and Michele Ditullio (8)

Beth Ann Docherty

IMO Janet M. Docherty (11)

Mr. Paul S. Drost (22)

Scott J. Donaldson

& Michael Hunter (12)

Mr. and Mrs. Patrick Dunphy (27)

Mary Jane Edwards (9)

Timothy Eicher (1)

Gerald and Dawn Ellison (4)

Jenna Marie Enright Taylor (1)

Mike & Margie Evans (9)

Jacquelyn Ewalt (1)

Frank and Lisa Falcione (3)

Debbie Fannin (1)

Mark and Carolyn Farabaugh (11)

George Farah (1)

Mr. Frederick Faraone (1)

Jacqueline Fennell (3)

Bob and Amy Ference

IMO Marie Ference (4)

Armand Ferrara (4)

Cheryl Ferri (1)

Kristian Feterik (3)

Mr. and Mrs. Robert Fiedler (12)

Tom and Sue Finegan (7)

Sarah Finney (3)

Jim and Paula Fiorucci

IMO Carol Fiorucci (17)

Bruce Fisher (1)

5 Js (16)

Peggy Forquer

IMO Betty Forquer (1)

Suzanne Fountain (1)

Mr. & Mrs. Paul K. Fox (31)

Kenneth T. Frankenbery (11)

John and Susan Frantz (2)

Friedlander Family (12)

Linda Froehlich

IMO Richard D. Froehlich (4)

Michael D. Gaber (2)

Thomas Garnett (1)

Shirley Gaudette (2)

Bernard T. Geiser (1)

Damian and Hayah George (10)

Linda J. Haynes, MD (11)

Mr. and Mrs. William D. Ghrist III (21)

Rachel Gilman & Tina Cutone

IHO Abigail Gilman (4)

Angella Goetz (10)

Lisa Ann Goldsmith (1)

Tom and Cathy Gothie (19)

Stephen Graf (6)

Cyndy Graves (11)

Eddie Grimes

IMO Greg Triko (8)

Marjorie C. Gross (3)

Mark M. Gudalis (5)

Brandon Guzy (1)

Mr. Robert Haddox (1)

Dave and Beth Haines (1)

Denise Hampson (4)

Mr. and Mrs. Thomas R. Harley (4)

Niki Harris and Zane Weiner (8)

Michael and Tammy Hart (1)

Donna Hazel (3)

Ms. Paula Heil (6)

Michael and Diane Hillebrand (1)

Janice L. Hixson (7)

Lois M. Hoffman

IMO Mr. and Mrs.

Edward Hoffman (21)

Iris Holleran (1)

Daniel and Vicki Holthaus (11)

Melissa Hook (8)

Larry and Denise Hoover (14)

Mr. Bruce Hostler (15)

Millie Hutchison (2)

Michael Iannone (1)

Dr. and Mrs. Ralph E. Jones (6)

Ron and Eileen Jones (1)

William Jones (1)

Elaine Kaczmarek

IMO Dorothy Proccupp

and Joanne Readshaw (21)

Jim and Cheryl Kassner (4)

Mary Kellam

IMO Robert C. Milsom (5)

Kelly and Walter Keller (2)

Patsy & PK Kennedy (4)

Roy and Lori Kern (4)

Russell Kern (1)

Mr. and Mrs. Kevin Killinger (6)

James and Nita Kincaid (1)

MaryAnn & Bill King (25)

Debra and Jack King (14)

James R. Kirsch

IMO Audrey K. Kirsch (14)

Mr. Dennis Knapp (1)

Diane Knechtel (21)

Bruce Knepper (1)

Dr. Stephanie Kobil (28)

Lou M. Kramer, Jr.

IMO Louis Kramer, Sr. (11)

Shawn and Judith Kramer (6)

Mac and Eileen Kravitz (17)

Margaret and Dan Lackey (6)

Joan Lacomis (4)

Nancyann Letterio (6)

Neil and Sharon LeJeune (11)

Dirk M. Lesnett (2)

Leslie and Rich Levine (5)



THANK YOU TO OUR PCLO DONORS

ACT 2 IS MADE POSSIBLE BY YOU!

LIMELIGHTERS CONT'D...

Jonathan Levinson (1)
Jeff and Rachel Lizik (8)
Kate Loy (4)
Jeff and Dr. Jae Luck (4)
Ronald and Christine Lunardi (24)
Robert Luttner (2)
Carole Malik
and Marlene Campas (2)
Mr. & Mrs. Gregory D. Maloney (30)
Janet K. Manuel (17)
Rudy & Rose Marshalek (1)
Jim and Maribeth Masquelier (1)
David Maxwell (36)
Larry and Michaelene
McCahan (32)
Mrs. Neva McClymonds
IMO John McClymonds (9)
Amanda McCoy (1)
Mark and Patricia McGinley (7)
Paul and Melissa McLane (6)
Mr. and Mrs. Daniel Meier
and Family (7)
Christine Matelan (1)
Bob and Chris Meyer (9)
Robert and Lynn Mialki (7)
Joseph and Gina Milcoff (5)
Robert and Amber Miles (6)
Justin J. Mohney (3)
Dr. and Mrs. James D. Moore (15)
Jeff and Crystal Moore (1)
Lee Morehouse (4)
Jim and Deborah Muders
IMO Tony Wiecekowski (17)
Wendy Murdock (1)
Jennifer Murr (1)
Richard Narvin
IHO My Bunny (3)
William Naylor
IMO Mary D. Naylor (2)
Marisa Nero (1)
William Noel (3)
Dan and Lisa Nydick (17)
Alice Oakes (5)
Michael J. O'Brien (3)
James Ohr (2)
Pascal Family (1)
Jo-Ann Paulenda (7)
Kathy & John Pechunka (15)
Richard and Deborah Peltier (1)
Vincent Petrocelli
IMO Carole L. Petrocelli (18)
Mark F. Piedmonte (5)
Mr. and Mrs. Stephen F.
Piskurich (26)
Mr. & Mrs. Donald J. Platt (27)
Cindy & John Pokora
IMO Lil Sciulli (12)
Kathy Jo Pollack (20)
Kenneth Powell (1)
Barry B. Premoshis (23)
Barbara Provenzano (20)
Barbara Provenzano (18)
Jim and Maura Puchany (4)
Quality Repair Services, LLC (10)

Sue Quinn (4)
Pamela Rakosky (1)
Joshua and Brielle Reicks (5)
Edward M. Reppa, Jr. (17)
Mr. & Mrs. Frank Ricco Jr. (13)
Melinda Rietzel (2)
David and Sylvie Rigdon (7)
Denise & Rusty Roach (2)
Gary and Cookie Roberson (2)
Marcy Robertson (2)
Kristen Rohr (2)
Dante Romito (1)
Al Rose
IMO Diane Rose (17)
Rosella Rosener (14)
Wendy Ruch (1)
Sally and Edmund Ruffin (1)
Kathy Ruffing (1)
Ms. Kathleen Sacco
& Mr. Andrew Greiner (2)
Frank and Denise Salopek (8)
Dianne Scansaroli (9)
Mark Scappe (6)
Mr. Jim Schepis (1)
Mr. and Mrs. Daniel C.
Schetley (11)
John C. Schlotterer (8)
Edward R. Schneider (4)
Carl W. Schultz (6)
Emily Busse Schwartz
IMO John and Maggie Busse (2)
Jim and Sheree Sciarretta (5)
Victoria and David Serafini (19)
Brian Sergi-Curfman (2)
Steve and Linda Sesack (2)
Madalaine T. Shigle
IMO Therese "Grammy" Sciulli (5)
Vincent J. Siciliano
IMO John A. Siciliano (39)
Carol Sikov Gross
IMO Rhoda F. Sikov (5)
Teresa Sirianni (1)
Jacob and Rula Skezas (10)
Walter and Gayle Sklarsky
IMO Clara Sklarsky
and Sandra Cessna (16)
Bob and Chris Sloboda (8)
Joseph and Lynn Smith (10)
Ruth Snyder (2)
Tom and Karen Sochacki (2)
Lyn Sokol (1)
Steve Sokol (1)
Susan Sorbo (12)
Jocelyn Steele (2)
Carol M. Stein (18)
Mr. & Mrs. Gregory A. Stein (35)
Joe Stevens (9)
Jenny and Kelly Stewart (7)
Troy and Julie Stiffler (2)
Debra Stiger (6)
Mr. and Mrs. George S.
Stipetich (3)
Dennis and Allison Stombaugh (6)
Christine and Ronald Stout (1)
Wade and Barbara Stull (6)

Jayelyn Swink (3)
Janet L. Templer
IMO Carol R. McAuley (24)
Taylor Toth (1)
Charles F. Traeger
& Rita Powrozniak-Traeger (9)
Nancy and Gary Tuckfelt (5)
IMO Jay and Renee Minsky (6)
Catherine Turner (25)
Penny Tzortzis (3)
Keith and Carol Unidas (3)
James and Dorothy Valimont (12)
Jane A. Vaselenak (4)
Matt and Dr. Anne Veres (5)
Kathleen M. and Emil P. Varnise (1)
Marilyn and Joseph Vettorazzi (9)
Janet Wagner (1)
William and Susan Wagner (1)
Dan and Lee Ann Wahl (4)
Jason Waltz (1)
Justin Weissert (1)
Jane Werner and Bob Rutkowski (1)
Karen and Fred Wheeler Jr. (3)
Michael and Shelby Wherry (6)
Dick and Margaret White (17)
Peggy C. Whitehurst (8)
Mr. David E. Winklmann (8)
Brandon Wolfe (1)
Carol Worstell
IMO Mildred Worstell (2)
Linda Wright (16)
Lawrence Yagoda (1)
Sam Yates (1)
Joseph Yuhasz (4)
Susan J. Zuk (8)
Dr. Paulina F. Zunino (5)
Susan Stanish Zurawsky (4)
Ms. Linda Zyroll (1)

PITTSBURGH CLO WOULD LIKE TO THANK AND RECOGNIZE THE FOLLOWING MEMBERS OF THE LEGACY LEGENDS SOCIETY:

Paul Block
Jim Gretz
Robert C. McCartney
Paul and Paula Palmer
Jeffrey Lawrence Pollock, Esq.
Sally Wade
Reverend Thomas A. Wagner

For more information on the Legacy Legends Planning Giving Program, please visit our website at PittsburghCLO.org

Pittsburgh CLO thanks the Ambassadors and Wine Tasting & Silent Auction Donors for their generous support of the CLO Performance Season and CLO's Arts, Education, and Community Engagement Initiatives.

To update your preferred donor listing, please contact the CLO Development Office at 412-281-3973, ext. 4.



LEGACY LEGENDS

CLO LEGACY LEGENDS recognizes the dedicated supporters who share a vision for Pittsburgh CLO's future. Their bequests and other planned gifts will have a profound and lasting impact on the artistic quality of the work you see on our stages.

If you would like to join us in building that future, please consider becoming a **CLO LEGACY LEGEND** by naming Pittsburgh CLO as a beneficiary of your will or trust, IRA or other retirement plan, life insurance policy, life income, or other planned gift. Designating Pittsburgh CLO is not a complicated process and can often be done with a phone call to your investment adviser.

If you have already named CLO in your estate plans – let us know and we will add your name to our CLO LEGACY LEGENDS and include you in special recognition and benefits. **For more information, please contact Wynne Fedele, Director of Development at wfedele@pittsburghCLO.org or call 412-281-3973 x232.**



Pittsburgh's premier student-training program dedicated to celebrating talent and encouraging dreams!



**PITTSBURGHCLO.ORG/EDUCATION
412-281-2234**





YOUR LEADING ROLE AWAITS!

*Did you know that a ticket only covers half
of the expenses of a PCLO production?*

*Charles Shaughnessy, star of PETER PAN, with
donors at Supper with the Stars*

**Join our vibrant donor community and help us keep
the curtain rising!**

- **\$100 GIFT** – Gain priority access to readings of new musicals and recognition in PCLO show playbills.
- **\$250 GIFT** – Go behind-the-scenes with an invitation for two to attend a reception and dress rehearsal of a PCLO show and enjoy two drink vouchers for the Benedum Center bars.
- **\$1,500 GIFT** (and above) – We cordially invite you to join our fabulous **Gene Kelly Producer's Society**, gaining access to thrilling opportunities to meet, mingle, and dine with stars and befriend fellow musical theater lovers! Furthermore, enjoy premier benefits such as year-round access to PCLO's concierge department for all your ticket exchanges and purchases; free reserved parking during PCLO shows; complimentary tickets; and more.



Donors at Dress Rehearsal Reception

**FOR MORE INFORMATION ABOUT DONOR BENEFITS AND
WAYS TO GIVE, VISIT PITTSBURGHCLLO.ORG OR CALL OUR
DEVELOPMENT OFFICE AT 412-281-3973 EXT. 4**



**JOIN
OUR DONOR
FAMILY TODAY!**

The tax deductible amount of your contribution is limited by the excess of your contribution over the value of certain benefits provided by CLO. For more information, visit pittsburghCLO.org. A copy of the official registration and financial information may be obtained from the Pennsylvania Department of State by calling toll free, within Pennsylvania, 1-800-732-0999. Registration does not imply endorsement.



SPECIAL THANKS

The Pittsburgh CLO Gallery of Heroes in-school program is sponsored by The National Endowment for the Arts, Highmark Blue Cross Blue Shield, The Massey Charitable Trust, The Pittsburgh Foundation, Allegheny Foundation, Healthcare Reality, Cooper-Siegel Family Foundation, Laurel Foundation and UPMC.

The Gene Kelly Awards are sponsored by The Michael J. Kara Family, Deloitte, the Gismondi Family Foundation, Highmark Blue Cross Blue Shield, PNC, and the CLO Ambassadors.

The Charles Gray Award for Special Achievement in Arts Education is underwritten by the Roy A. Hunt Foundation.

The CLO New Horizons is made possible in part by UPMC, Highmark Blue Cross Blue Shield, The Pittsburgh Foundation, Allegheny Foundation, Bellin/Coontz Family Giving Fund, Bender Consulting Services, Cooper-Siegel Family Foundation, PriceWaterhouseCoopers, and the Edith L. Trees Charitable Trust.

Stars of Pittsburgh CLO's Summer Series dine at the Grand Concourse Restaurant at Station Square.

The Official Hotel of Pittsburgh CLO. The Official Airline of Pittsburgh CLO. The Official Car Provider of Pittsburgh CLO.



EQT New Musicals Commissioning Fund

The purpose of the EQT New Musicals Commissioning Fund is to identify and commission writers both in Pittsburgh and across the country to write new musicals for the Pittsburgh CLO Summer Season, Cabaret and Gallery of Heroes program.

NOW THROUGH AUGUST 31ST!



SUMMER

STAYCATION

FREE ADMISSION

WITH ALLEGHENY COUNTY LIBRARY CARD & RESERVATION

RADPASS.ORG

SEE OFFERS FROM SOME OF PITTSBURGH'S FAVORITE ATTRACTIONS AND BOOK YOUR STAYCATION PASS WITH THIS QR CODE:



THE 2024-25 SEASON

CELEBRATING 50 YEARS

GET TICKETS TODAY!

412-431-CITY (2489)

CITYTHEATRECOMPANY.ORG



9.21-10.13 2024

A crude comment, a problematic paramour, and an unfortunate medical mess turn a PR nightmare into a global crisis—This comedy is classified for mature eyes only!

POTUS

OR, BEHIND EVERY GREAT DUMBASS ARE SEVEN WOMEN TRYING TO KEEP HIM ALIVE

BY Selina Fillinger

DIRECTED BY Meredith McDonough



11.30-12.22 2024

The Wickhams is a charming holiday tale that celebrates forgiving and forthrightness in the season of giving.

THE WICKHAMS: CHRISTMAS AT PEMBERLEY

BY Lauren Gunderson AND Margot Melcon

DIRECTED BY Kyle Haden



1.18-2.16 2025

The Real James Bond... Was Dominican is a young man's guide to love, color, code-switching, white-washing, and the roller coaster of finding one's true self.

THE DNAWORKS PRODUCTION OF

THE REAL JAMES BOND ...WAS DOMINICAN

BY Christopher Rivas

DEVELOPED WITH AND DIRECTED BY Daniel Banks



3.8-3.30 2025

Birthday Candles takes us through a century of ordinarily extraordinary moments and dreams.

BIRTHDAY CANDLES

BY Noah Haidle

DIRECTED BY Marc Masterson



4.19-5.11 2025

King James is a buddy comedy that examines the bonds that sports can create.

KING JAMES

BY Rajiv Joseph

DIRECTED BY Monteze Freeland



PNC

2024-2025

BROADWAY PITTSBURGH™



HAMILTON

September 11-29, 2024



THERE'S LIFE AFTER ROMEO

Juliet

THE HIT BROADWAY MUSICAL

October 29-November 3, 2024



MJ

THE MUSICAL

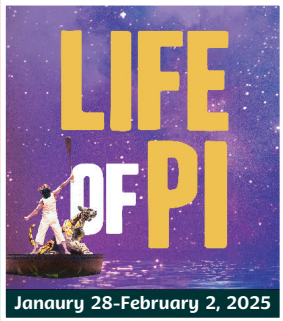
November 19-December 1, 2024



THE HIT BROADWAY MUSICAL

FUNNY GIRL

January 7-12, 2025



LIFE OF PI

January 28-February 2, 2025

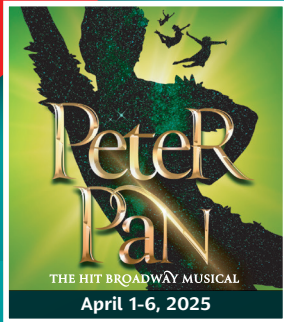


WINNER • 5 TONY AWARDS
INCLUDING

BEST MUSICAL

Kimberly Akimbo

March 4-9, 2025



Peter Pan

THE HIT BROADWAY MUSICAL

April 1-6, 2025



SOME LIKE IT HOT

BROADWAY'S GREAT BIG MUSICAL COMEDY

April 15-20, 2025



Season Special

STOMP

October 18-19, 2024



Season Special

COME FROM AWAY

THE HIT BROADWAY MUSICAL

May 2-4, 2025

BENEDUM CENTER SEASON TICKETS 412-456-1390 GROUPS 10+ TICKETS 412-471-6930

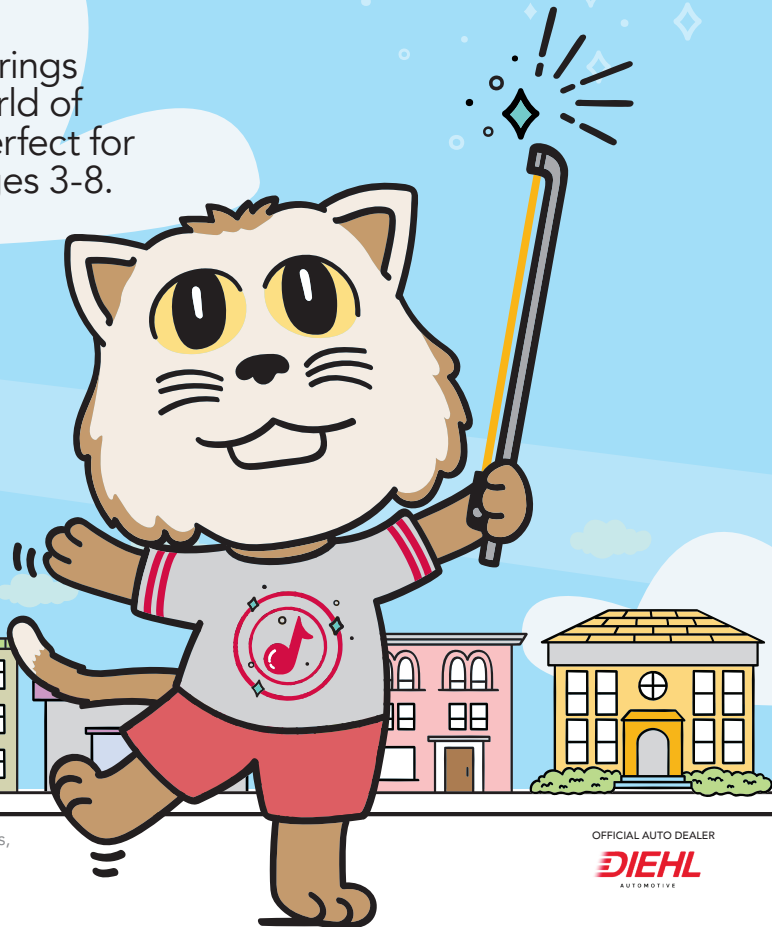
24
25
SEASON

fiddlesticks
MUSICAL EXPLORATION



THE ADVENTURE AWAITS!

The 24-25 season brings you a wondrous world of orchestral music, perfect for families with kids ages 3-8. **Subscribe today!**



Endowed by Gerald and Audrey McGinnis, honoring the Center for Young Musicians.

OFFICIAL AUTO DEALER

DIEHL
AUTOMOTIVE



PITTSBURGH SYMPHONY ORCHESTRA

PITTSBURGH BALLET THEATRE

Family

Fairy Tale

Package



Peter Pan
The Nutcracker
The Wizard of Oz
with the PBT Orchestra

Take your family on a sweet,
season-long adventure!

Get your package for as little as \$72.
Kid's pricing starts at \$37.50.

Call **412-454-9107**

Buy online **PBT.ORG/FAIRYTALE**

Artist: Grace Rookstool Photo: Michael Henninger

Untitled (Art Party)

● Fri., Sept. 20

● 7–10 p.m.

● Art, Cocktails,
Food, Music

Join us for our most anticipated
celebration of the year!

Carnegie
Museum of Art



Scan the QR code
to buy your ticket or
donate now!

Presented by





The Director and Choreographer are members of the Stage Directors and Choreographers Society, a national theatrical labor union.



United Scenic Artists represents the designers and scenic painters for the American Theatre.



Backstage and Front of the House Employees are represented by the International Alliance of Theatrical Stage Employees (or I.A.T.S.E.).



The actors and stage managers employed in this production are members of Actors' Equity Association, the union of professional actors and stage managers in the United States.



The Musicians, Conductors, Music Preparation Personnel and Librarians employed in this production are members of the American Federation of Musicians of the United States and Canada.

Pittsburgh CLO receives state arts funding support through a grant from the Pennsylvania Council on the Arts, a state agency funded by the Commonwealth of Pennsylvania and the National Endowment for the Arts, a federal agency.



The Allegheny Regional Asset District, a county agency created to support and finance regional assets, including libraries, parks, cultural groups, sports and civic facilities, and to distribute tax relief to the 128 municipalities of Allegheny County.



The National Endowment for the Arts is a public agency dedicated to supporting excellence in the arts, both new and established; bringing the arts to all Americans; and providing leadership in arts education. Established by Congress in 1965 as an independent agency of the federal government, the Endowment is the nation's largest annual funder of the arts, bringing great art to all 50 states, including rural areas, inner cities, and military bases.



Pittsburgh CLO AMBASSADORS



BECOME A PITTSBURGH CLO AMBASSADOR TODAY!

The mission of the Pittsburgh CLO Ambassadors is to support and broaden the reach and diversity of the Pittsburgh CLO and to make musical theatre an active and accessible part of the lives of its members and others through the organization of and participation in a combination of theatrical, social, fundraising, volunteer, and educational events.



pittsburghCLO.org/Ambassadors



PITTSBURGH CLO STAFF

Mark Fleischer, *Executive Producer*

SALES & MARKETING

Sharon Goldstein.....*Director of Sales and Marketing*
 Alex Boyd.....*Patron Engagement Coordinator*
 Nicole Castelli.....*Patron Services and Ticketing Associate*
 Ryan Clark.....*Manager of Patron Services and Ticketing*
 Emma Cumberledge.....*Patron Services and Ticketing Associate*
 Charlene Flores.....*Group Sales Coordinator*
 Sidney Franczak.....*Marketing Manager*
 Kyle J. Malinosky.....*Marketing Coordinator*

DEVELOPMENT

Wynne Fedele.....*Director of Development*
 Liz Hoyt-Brown.....*Associate Director of Development*
 Brandon Marzke.....*Manager of Individual Giving*
 Tom McGee.....*Corporate and Foundation Relations Manager*
 Dayna Sowers.....*Board Liaison/Development Coordinator*
 Levi Von Iderstein.....*Development Data Coordinator*
 Sia Zhang.....*Development Associate*

FINANCE & ADMINISTRATION

Angela Langill.....*Director of Finance and Administration*
 Michael J. Cerchiaro.....*General Manager*
 Shelby Hinkle.....*Human Resources Manager*
 Kuei-O Lin.....*Accountant*
 Makenzie Shimko.....*Accounting & HR Coordinator*
 Angie Staats.....*Seasonal Company Manager*
 Tom Stumme.....*Executive Assistant*
 Keturah Wasler.....*Office Manager*
 Amanda Wilcox.....*Controller*

EDUCATION

Jim Scriven.....*Director of Education*
 Patty Maloney.....*Principal*
 Brady D. Patsy.....*Community Engagement Manager*
 Aidan Quartana.....*Education Associate*
 Alexander Righetti.....*Education Operations Coordinator*

PRODUCTION/CONSTRUCTION CENTER

Billy Mason.....*Associate Producer*
 Anna Hanson.....*Producing Assistant*
 Macarena Subiabre.....*Production Manager*
 Michele Sullivan.....*Construction Center Business Manager*
 Michael Bannias.....*Key Carpenter*
 Dritan Cullaj.....*Key Carpenter*
 Fredrich Drenkow.....*Journeyman*
 Jordan Edkins.....*Technical Director/Foreman/CNC Operator*
 Tyler Kluck.....*Key Electrician*
 Andrew Kutrufis.....*Assistant Foreman*
 BJ Lipari.....*Scenic Charge*
 Timothy McCoy.....*Key Carpenter*
 Taylor Oberle.....*Journeyman*
 Evan Shoaf.....*Key Carpenter*
 Brendan Smith.....*Key Carpenter*

YOUNG SEUSSICAL PRODUCTION

Lynn Ahrens.....*Book, Lyrics*
 Heather Anklely*.....*Production Stage Manager*

J Branson.....*Scenic Designer*
 Greg Brooks.....*Sound Designer*
 Catie Brown.....*Music Director, Music Supervisor, Conductor*
 Tomé Cousin.....*Intimacy Coordinator*
 Teagan deGroen.....*Stage Management Production Assistant*
 Leon Dobowski.....*Costume Designer*
 Stephen Flaherty.....*Book, Music*
 Jordan Edkins.....*Shop Foreman*
 Chris Evans.....*Sound Associate*
 Jasper Gilitz.....*Stage Management Production Assistant*
 Kelly Haywood*.....*Assistant Stage Manager*
 Michael Heitzman.....*Director*
 Kevin Hogan.....*Assistant Head Electrician*
 George Hoydich.....*Music Coordinator*
 Geoff Josselson.....*Casting Director*
 Jeff Knaggs.....*Hair and Makeup Designer*
 Dan Kendgia.....*Head Electrician*
 Travis Klingler.....*Hair and Makeup Supervisor*
 Andrew Kutrufis.....*Head Carpenter*
 Lisa Leiberling.....*Puppet Designer*
 George Bacon.....*Additional Costumes Provider*
 Robbie Roby.....*Choreographer*
 Nathan McWilliams.....*Lighting Apprentice*
 Paul Miller.....*Lighting Designer*
 Ryan J. Moller.....*Costume Coordinator*
 Robert Neumeyer.....*Music Supervisor*
 Taylor Oberle.....*Head Props*
 Marty Savolskis.....*Props Coordinator*
 Christine Schott*.....*Assistant Stage Manager*
 Evan Shoaf.....*Assistant Head Carpenter*
 Stephen Smart.....*Hemsley Lighting Assistant*
 Kathie Sullivan.....*Wardrobe Supervisor*
 Madeline Walker.....*Youth Performer Supervisor*
 Jacob Zedek.....*Associate Lighting Designer*

Season Arranger, and Orchestrator

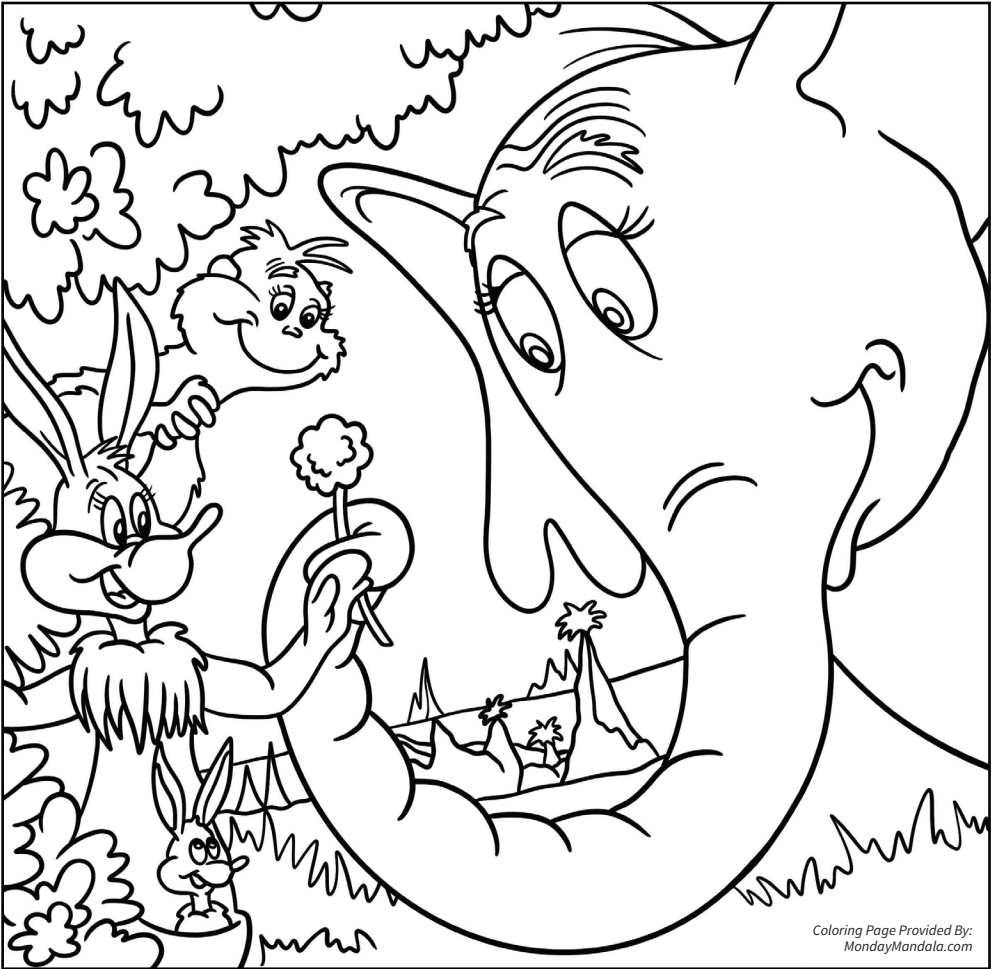
SUMMER 2024 INTERNS

Elizabeth Amen.....*Development*
 Luke Braher.....*Marketing and Public Relations*
 Skyler Bruno.....*South Park Summer Camp*
 August Carter.....*Downtown Aftercare*
 Bailey DeBerry.....*Company Management*
 Colin Eccher.....*Marketing and Public Relations*
 Ariana Gant.....*Community Engagement*
 Abigail Gilman.....*Producing*
 Theo Kutsko.....*Music*
 Andre Lewis.....*Sound Design*
 Sophie McClung.....*Production Management*
 Rylie McCracken.....*Construction Center*
 Jenny Molyneaux.....*Downtown Education Assistant*
 Rachel Parsons.....*Downtown Education Assistant*
 Madeline Segar.....*Costume Design & Coordination*
 Sadie Shelkey.....*Graphic Design, Website, and Social Media*
 Jillian Thomas.....*Downtown Education Design*
 Phoenix Thomas.....*Stage Management*

*Members of Actors' Equity Association, the union of professional actors and stage managers in the United States.



COLORING FUN!



Coloring Page Provided By:
MondayMandala.com

giant eagle
foundation

**IS A PROUD SUPPORTER OF
PITTSBURGH CLO**

BEST

DOCTORS HOSPITALS CUSTOMER SERVICE

Every time.



With UPMC Health Plan, you have the best people, places, and programs all working together for you. Whether you seek care from UPMC doctors and hospitals or from our large community network, you can count on getting high-quality care where and when you need it. Plus the award-winning service of our Health Care Concierge team. So that you have access to the best care and the best help on every call and for every visit, every time you need it. [UPMCHHealthPlan.com](https://www.upmchealthplan.com)

PARTNERS IN CARE

UPMC HEALTH PLAN

For UPMC Health Plan "best" information go to www.upmchealthplan.com/best.

Nondiscrimination statement

UPMC Health Plan¹ complies with applicable federal civil rights laws and does not discriminate on the basis of race, color, national origin, age, disability, sex, sexual orientation, gender identity, or gender expression.

¹UPMC Health Plan is the marketing name used to refer to the following companies, which are licensed to issue individual and group health insurance products or which provide third party administration services for group health plans: UPMC Health Network Inc., UPMC Health Options Inc., UPMC Health Coverage Inc., UPMC Health Plan Inc., UPMC Health Benefits Inc., UPMC for You Inc., and/or UPMC Benefit Management Services Inc.

Translation Services

ATENCIÓN: si habla español, tiene a su disposición servicios gratuitos de asistencia lingüística. Llame al 1-855-489-3494 (TTY: 1-800-361-2629).

注意：如果您使用繁體中文，您可以免費獲得語言援助服務。請致電 1-855-489-3494 (TTY: 1-800-361-2629)。