



Pittsburgh
CLO

PRODUCTION OF



Disney

FROZEN

THE BROADWAY MUSICAL

SPONSORED BY

CAROL
HEFREN
TILLOTSON

#PCLOFrozen | @PittsburghCLO

UP NEXT AT PITTSBURGH CLO



RICHARD O'BRIEN'S

ROCKY HORROR SHOW

Oct 15-Nov 9
Greer Cabaret



A MUSICAL CHRISTMAS CAROL

Dec 13-23
Byham Theater

Sponsored by
KeyBank 

PITTSBURGH CLO.ORG  412-456-6666
Groups 10+ Save! Call 412-471-6930

PITTSBURGH CLO BOARD OF DIRECTORS



OFFICERS



Joseph V. DiVito, Jr.
CHAIRMAN OF THE BOARD



Edward T. Karlovich
PRESIDENT

HONORARY CHAIRMAN OF THE BOARD

Julie Andrews

CHAIRMAN OF THE BOARD

Joseph V. DiVito, Jr.

PRESIDENT

Edward T. Karlovich

VICE PRESIDENTS/ CABARET THEATER

John Dick
Meghan Barrera

VICE PRESIDENT/ CLO AMBASSADORS

Christy Kobus

VICE PRESIDENT/ CONSTRUCTION CENTER & FACILITIES

Nicholas J. Liparulo
Deedra Knas

VICE PRESIDENTS/ DEVELOPMENT

Mark J. Minnaugh
Laurie M. Mushinsky

VICE PRESIDENTS/ EDUCATION

Christine M. Kobus
George Gans

VICE PRESIDENTS/ FINANCE

Timothy K. Zimmerman
Brian Koble
Richard J. Lipovich

VICE PRESIDENTS/ HUMAN RESOURCES

Lesley Evancho

VICE PRESIDENTS/ MARKETING

Jon Galatis
Leah Ohodnicki

VICE PRESIDENTS/PRODUCTION, NEW WORKS DEVELOPMENT & FUNDING

Peter J. Germain
Dennis Unkovic
Stephen S. Bloomburg

VICE PRESIDENTS/ NOMINATING

Scott F. Neill
Glenn D. Todd

VICE PRESIDENTS/ STRATEGIC PLANNING

Luke A. Sizemore
LaShawnda Thomas

VICE PRESIDENTS

Pritam Advani
Daniel I. Booker
Sherri Grasak
Richard S. Hamilton
Laura Penrod Kronk

SECRETARY

Johanna G. O'Loughlin

TREASURER

Richard J. Lipovich

PRESIDENT OF THE BOARD EMERITUS

Robert C. McCartney

EXECUTIVE PRODUCER EMERITUS

Van Kaplan

CORPORATE COUNSEL

James M. Doerfler

CHAIRMAN OF THE BOARD EMERITUS

Louis D. Astorino
Daniel I. Booker
Helen Hanna Casey
George A. Davidson, Jr.
Joseph C. Guyaux
William M. Lambert
Alexander Overstrom
James E. Rohr

DIRECTORS

Joyce A. Bender
Patricia M. Blenko
Chris Brussalis
Jane Dixon
Clare Donahue
Paul Hennigan
Leslie Hyde

Brian Koble
Deedra Knas
Diane B. Landers
Nicholas J. Liparulo
Margaret McLean
Timothy M. McVay
Christina P. O'Toole

Robin S. Randall
Eric A. Schaffer
Gregg Schmidtetter
Arlene Sokolow
Helen Spalaris
LaShawnda Thomas
Joann L. Tissue

The Honorable
Debra Todd
Carla J. Vrsansky
Jake Wheatley, Jr.
Jason H. Wilson

ADVISORY BOARD

George Ator

Joan Bogut

Charles R. Fallon

Rosemarie R. Parse, Ph.D.

Melvin D. Rex

The Final Act:

Libations



IN PITTSBURGH'S
ONLY ORIGINAL
HOTEL SPEAKEASY



OMNI

WILLIAM PENN

530 WILLIAM PENN PLACE



Dear Friends,

Welcome to Pittsburgh CLO's production of **Disney's Frozen**, the magical finale of our 2025 PNC Summer of Musicals at the Benedum Center!

We invite you to step into the adventure where snowflakes swirl, and whether you know every word to "Let It Go" or you're just discovering the magic of Arendelle for the first time in forever, this story shows us that love truly wins! That message is at the heart of this story and at the heart of everything Pittsburgh CLO does for this community.

This production is the result of a remarkable collaboration with Starlight Theatre in Kansas City, Missouri, and the Lied Center for Performing Arts in Lincoln, Nebraska. By sharing talent and resources, we're able to create unforgettable experiences that will reach even more audiences.

Adding to the magic, students from the Pittsburgh CLO Academy of Musical Theater will perform in the Benedum Center production and serve as understudies to their peers from the Kansas City Starlight cast. These young performers will also travel to Nebraska, where they will alternate performances with Kansas City students during the Lied Center's engagement, offering a one-of-a-kind professional experience that deepens their training at Pittsburgh CLO Academy of Musical Theater. From child performers just starting out to teens ready to shine, there's a place for every young person to grow. Fall Semester classes are now open for registration. To learn more please visit **PittsburghCLO.org/Education**.

We all must thank **Carol Hefren Tillotson**, our generous Show Sponsor, for helping us bring this spectacular story to the Pittsburgh stage. And I thank all of you, our CLO family. Thank you for being part of this thrilling summer. Your support is truly the heartbeat of everything we do. To join Carol with your support, please visit **PittsburghCLO.org/Donate**.

We hope you'll stay connected and believing in what we can accomplish together throughout the rest of the year; follow us on Instagram, Facebook, and visit **PittsburghCLO.org** for the latest news, behind-the-scenes fun, and exciting updates. There's so much more joy and musical memories ahead, and we can't wait to share it with you.

Thank you for making the PNC Summer of Musicals one to remember. Now — take a deep breath, open your heart, and get ready to let it go. The magic of **Disney's Frozen** awaits!

With gratitude and a flurry of excitement,

Mark Fleischer
Executive Producer
ExecutiveProducer@PittsburghCLO.org



Celebrating the brilliance of Pittsburgh.

It takes dedication, hard work, and a smart and steady approach to help a community thrive. That's why PNC is proud to celebrate the Pittsburgh CLO for all it does to help make our community brilliant.



**BRILLIANTLY
BORING
SINCE 1865™**

Brilliantly Boring since 1865 is a service mark of The PNC Financial Services Group, Inc.
©2025 The PNC Financial Services Group, Inc. All rights reserved.
PNC Bank, National Association. **Member FDIC.**



PNC BANK

**BRILLIANTLY
BORING
SINCE 1865SM**

Welcome once again to the Pittsburgh CLO's PNC Summer of Musicals!

Since we can't sing or dance like the brilliant artists you'll see on stage, we're proud to be the premier sponsor of this exciting annual series. These all-new productions of timeless classics and modern masterpieces are guaranteed to thrill audiences from across our region and beyond.

We're equally proud of our long-standing relationship with Pittsburgh CLO. The PNC Summer of Musicals and other CLO presentations are premier attractions to Pittsburgh's thriving Cultural District, drawing thousands of visitors to our city every year. Our support also helps to sustain CLO's Academy of Musical Theater for children, providing vital opportunities for young talent to thrive.

Thank you for being here and being a part of it all.

Enjoy the show!

Sincerely,

Louis R. Cestello

PNC

Head of Regional Presidents

Brilliantly Boring since 1865 is a service mark of The PNC Financial Services Group, Inc.

©2025 The PNC Financial Services Group, Inc. All rights reserved.

CON PDF 0524-057-2470001

THEATER CONNECTS THE WORLD. SO DO WE.

Just like the Pittsburgh CLO, we're passionate about bringing people together, creating meaningful moments and inspiring new heights.

Delta is proud to be the official airline partner of the Pittsburgh CLO.



KEEP CLIMBING



CAROL HEFREN TILLOTSON



Dear Friends and Fellow Lovers of Musical Theater,

It is my pleasure to welcome you to the final production of Pittsburgh CLO's 2025 PNC Summer of Musicals; a season filled with remarkable variety.

Just before summer, we began with the world premiere of *Madame Clicquot: A Revolutionary Musical*, a bold and ambitious new work launched right here in Pittsburgh. The season officially opened with *Lerner & Loewe's Camelot*, a timeless story with a sweeping score that still has me humming "Camelot" and "If Ever I Would Leave You." Next came *Back to the Future: The Musical*, a title many of you may know well. Although I didn't know the movie, I'm so glad I decided to attend the musical. It was imaginative, full of surprises, and packed with clever technical effects. One of my grandsons saw it with me and said it might be his favorite show yet.

Now we close with *Disney's Frozen*, a magical story beloved by audiences of all ages. With its heartfelt message and the iconic "Let It Go," it's the perfect way to end the summer. It is my honor to help bring musical theater to a new generation of Pittsburghers.

Reflecting on this season reminds me of how far Pittsburgh CLO has come. In 1946 CLO began at Pitt Stadium, performing under the stars for thousands. Over the years, it moved to the Melody Tent, the Civic Arena with its famous retractable roof, then Heinz Hall, before finding its long-term home at the Benedum Center in 1988. Much has changed since those early days. Like many theaters across the country, CLO has had to strategically adjust to new challenges, including producing fewer shows this summer. However, what has not changed is the passion, creativity, and sense of community behind every performance.

My support for Pittsburgh CLO has grown because of the joy it brings to our community and the importance of ensuring it continues for future generations. Our support as a community is vital to keep this tradition alive. If you have ever considered doing more, whether by subscribing, bringing friends, or becoming a donor, I hope you will join me. **Every act of support matters and makes a difference to the future legacy of Pittsburgh CLO.**

Thank you for being here. Your presence means more than you know. I hope to see you again next summer as we celebrate an 80 year legacy together.

With deepest gratitude,

A handwritten signature in black ink that reads "Carol Tillotson". The script is elegant and cursive.

Carol Hefren Tillotson
Pittsburgh CLO Donor
Presenting Sponsor of *Disney's FROZEN*



Consider making a donation today!
Scan the QR Code above to learn more.

A decorative border of red and pink roses with green leaves surrounds the central text.

60 YEARS

of Bringing
Down the House

As we celebrate our diamond anniversary, we're exceedingly grateful for all our customers both past and present. Please know that we're as devoted as ever to delivering a sales and service experience that wows you again and again.

#1 Cochran **GO 1 BETTER**
cochran.com

Official Vehicle Provider for Pittsburgh CLO

AUDI | INFINITI | CADILLAC | MERCEDES-BENZ | BUICK | GMC | NISSAN | CHEVROLET | VOLKSWAGEN
TOYOTA | FORD | HONDA | SUBARU | MAZDA | KIA | HYUNDAI | CHRYSLER | JEEP | DODGE | RAM

JULY 18 - 27, 2025



CELEBRATING MUSICAL THEATER
MARK FLEISCHER, *Executive Producer*
Presents

PITTSBURGH CLO'S PRODUCTION OF

 **FROZEN**
THE BROADWAY MUSICAL

MUSIC AND LYRICS BY

KRISTEN ANDERSON-LOPEZ & ROBERT LOPEZ

BOOK BY

JENNIFER LEE

ORIGINALLY DIRECTED ON BROADWAY BY

MICHAEL GRANDAGE

BASED ON THE DISNEY FILM WRITTEN BY **JENNIFER LEE** AND DIRECTED BY **CHRIS BUCK & JENNIFER LEE**

ORIGINALLY PRODUCED ON BROADWAY BY **DISNEY THEATRICAL PRODUCTIONS**

ORIGINAL BROADWAY ORCHESTRATIONS BY **DAVE METZGER**

ORIGINAL BROADWAY MUSIC SUPERVISION AND ARRANGEMENTS BY **STEPHEN OREMUS**

ADDITIONAL BROADWAY DANCE ARRANGEMENTS BY **DAVID CHASE**

AT THE **BENEDUM CENTER**

STARRING

CATE HAYMAN • DAISY WRIGHT

ALSO STARRING

MATTHEW HYDZIK

FEATURING

**JORDAN BARRON • RYAN CAVANAUGH • MICHAEL BRIAN DUNN • KEVIN HACK • KYLE KEMPH
ALLAN M. SNYDER • HALLIE CAMACHO • LAUREL S. DENK • BELLAMY KELLY • HAILEY KENYON**

WITH

**LANCE T. BARKER • BELLA BILANDZIJA • BRETT BARTHELEMY • JORDAN TREMAINE DELEON
MATHEW FEDOREK • LAURA GULEY • CARLY HAIG • THOM HENKE • LIZ LECLERC • JUSTIN MOCK
JUSTIN O'BRIEN • MAILE ORAVITZ • BRITTANY PENT ROHM • MADYSEN PIPER • MICHAELA PLUMMER
KAI SACHON • BB STONE • JASMINE G. SWABY**

SCENIC DESIGNER **TIM MACKABEE** ADDITIONAL SCENIC ELEMENTS BY: **ADAM KOCH** LIGHTING DESIGNER **PAUL MILLER** COSTUME DESIGNER **RYAN J. MOLLER** ORIGINAL SOUND DESIGN BY: **JOSH LIEBERT**

SOUND DESIGN ADAPTED BY: **SARAH SPECK** HAIR AND MAKEUP DESIGNER **JEFF A. KNAGGS** PUPPETS BY **SCOTT MOLAMPY**
GEPPETTO STUDIO, INC VIDEO DESIGNER **BRUCE CUTLER** PRODUCTION STAGE MANAGER **RENÉE RIMLAND**

MUSIC DIRECTOR

CATIE BROWN

CHOREOGRAPHER

ROBBIE ROBY

DIRECTOR

MICHAEL HEITZMAN

The Director is a member of the STAGE DIRECTORS AND CHOREOGRAPHERS SOCIETY, a national theatrical labor union.

DISNEY'S FROZEN is presented through special arrangement with Music Theatre International (MTI).

All authorized performance materials are also supplied by MTI. www.mtishows.com

Produced in association with

PITTSBURGH CLO

KANSAS CITY STARLIGHT THEATRE

THE LIED CENTER AND NEBRASKA REPERTORY THEATRE

The Scenery and Props for this performance of **DISNEY'S FROZEN** are provided by Theater Under The Stars, a non-profit theatre located in Houston, Texas. For rental information, please call **713.558.2600** or visit the website at www.tuts.com

Costumes and Puppets provided by Tuacahn Center for the Arts. For rental inquiries please contact pcalame@tuacahn.org

THE VIDEOTAPING OR MAKING OF ELECTRONIC OR OTHER AUDIO AND/OR VISUAL RECORDINGS OF THIS PRODUCTION OR DISTRIBUTING RECORDINGS ON ANY MEDIUM, INCLUDING THE INTERNET, IS STRICTLY PROHIBITED, A VIOLATION OF THE AUTHOR'S RIGHTS AND ACTIONABLE UNDER UNITED STATES COPYRIGHT LAW.

Pittsburgh CLO is a founding member of the National Alliance for Musical Theatre, Independent Presenters Network and The Broadway League.



YOUR CARE SHOULD BE LIFE CHANGING

At UPMC, we don't imagine possibilities—we pioneer them.

Challenging conventional thinking. Uncovering never-before-imagined treatments and turning them into reality. Every day, we are redefining what health care can be and empowering you to live your best life.

upmc.com/ChangingLives

UPMC
LIFE CHANGING MEDICINE



FROZEN - CAST IN ORDER OF APPEARANCE

Young Anna.....	Hallie Camacho ⁺
Young Elsa.....	Laurel S. Denk ⁺
Queen Iduna.....	Liz Leclerc*
King Agnarr.....	Kai Sachon*
Pabbie.....	Allan M. Snyder*
Bulda.....	Michaela Plummer*
Anna.....	Daisy Wright*
Elsa.....	Cate Hayman*
Duke Weselton.....	Michael Brian Dunn*
Hans.....	Kevin Hack*
Kristoff.....	Matthew Hydzik*
Sven.....	Jordan Barron*
Olaf.....	Kyle Kempf*
Oaken.....	Ryan Cavanaugh*

DANCE CAPTAIN

Carly Haig*

ENSEMBLE

Lance T. Barker*, Brett Barthelemy*, Mathew Fedorek*, Laura Guley*, Carly Haig*, Thom Henke*, Liz Leclerc*, Justin Mock*, Justin O'Brien*, Maile Oravitz*, Brittany Pent Rohm*, Madysen Piper*, Michaela Plummer*, Kai Sachon*, BB Stone*, Jasmine G. Swaby*

ON FRIDAY JULY 25, AT THE 7:30PM PERFORMANCE, THE ROLES OF YOUNG ANNA & YOUNG ELSA WILL BE PLAYED BY

Young Anna - Bellamy Kelly | Young Elsa - Hailey Kenyon

UNDERSTUDIES

Elsa - Bella Bilandzija* | Hans - Jordan Tremaine DeLeon* | Duke of Weselton - Mathew Fedorek*
Olaf - Laura Guley* | Pabbie, Sven - Thom Henke* | Anna - Liz Leclerc*
Oaken - Justin O'Brien* | Kristoff - Kai Sachon*

SWINGS

Bella Bilandzija* | Jordan Tremaine DeLeon*

*Members of the Actors' Equity Association, the union of professional actors and stage managers in the United States.
+Students of the Pittsburgh CLO Academy of Musical Theater

Carnegie
Mellon
University

THE SCHOOL OF DRAMA

PROUD PARTNER OF THE
PITTSBURGH CLO



Pictured: Alex Sheffield and Savannah Lee Birdsong in "A Little Night Music" by Stephen Sondheim and Hugh Wheeler. Director: Ethan Heard Music Director: Riek Edinger Scenic Design: Paul Molina Costume Design: Evan Riley Lighting Design: Jessica Winward Photo by Dave Rubin dsrphoto.com, 2024



drama.cmu.edu



MUSICAL NUMBERS

ACT I

Opening.....Company

A Little Bit of You.....Young Elsa and Young Anna

First Joik.....Queen, Pabbie, Young Elsa, King, and Company

Northern Lights.....Queen, Pabbie, Young Elsa, King, and Company

Do You Want to Build a Snowman.....Young Elsa and Young Anna

For the First Time in Forever.....Anna, Elsa, and Townspeople

Hans of the Southern Isles.....Hans

Dangerous to Dream.....Elsa and Townspeople

Coronation Ball.....Orchestra

Love Is an Open Door.....Anna and Hans

Reindeer(s) Are Better Than People.....Kristoff

What Do You Know About Love?.....Anna and Kristoff

In Summer.....Olaf

Hans of the Southern Isles (Reprise).....Hans, Weselton, and Townspeople

Let It Go.....Elsa

INTERMISSION

There will be one fifteen-minute intermission.

ACT II

Entr'acte.....Orchestra

Hygge.....Oaken, Kristoff, Anna, Olaf, Family & Friends

I Can't Lose You.....Anna and Elsa

Do You Want to Build a Snowman (Reprise).....Olaf, Anna, and Kristoff

Fixer Upper.....Bulda, Pabbie, Olaf, Hidden Folk

Kristoff Lullaby.....Kristoff

End This Winter.....Ensemble

Monster.....Elsa, Hans, and Townspeople

Colder by the Minute.....Anna, Kristoff, Elsa, Hans, and Townspeople

Finale.....Company

Allegheny County Parks

Summer Park Programs



Adult /
Youth Sports

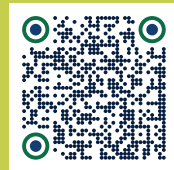


Nature
Programs



Camps

Find a full list of programs & sign up at:
AlleghenyCounty.us/ParkPrograms





PITTSBURGH CLO ORCHESTRA

Catie Brown, *Conductor*
George Hoydich, *Musical Coordinator*

Keyboard 1.....Catie Brown
 Keyboard 2.....Camille Villalpando Rolla
 Keyboard 3.....Jim Burns
 Violin.....Rebecca Neukom
 Cello.....Joe Bishkoff
 Guitar.....Ken Karsh
 Bass.....Jeff Mangone Sr.
 Reed 1.....George Hoydich
 Reed 2.....Sam Eisenreich
 Trumpet 1.....Dave Wingenbach
 Trumpet 2.....Drew Fennell
 Horn.....Zach Reed
 Trombone.....Bob Matchett
 Drums.....RJ Heid
 Percussion.....Paul Evans



NOISES OFF

By Michael Frayn



By
Ebony
Booth

NOW

more than ever.

PITTSBURGH
PUBLIC
THEATER

Subscribe & Save up to 45%

PPT.org/Subscribe • 412.316.1600

BY
HENRIK IBSEN
A NEW VERSION BY
AMY HERZOG

AN
ENEMY
OF THE
PEOPLE

**A
CHRISTMAS
STORY**
THE PLAY

By
Philip Grecian



Your best self is just ahead.

And nothing should hold you back from getting there. Highmark Blue Cross Blue Shield has added **over 6,000 virtual and in-person therapists** so that everyone can get the right care, right away.

Get started at [BecauseLife.com](https://www.BecauseLife.com).



Because Life.™

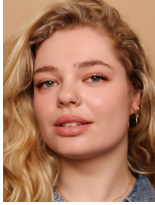


Access to in-person therapists where available.

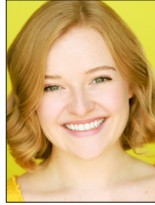
Benefits and/or benefit administration may be provided by or through the following entities, which are independent licensees of the Blue Cross Blue Shield Association: Highmark Inc. d/b/a Highmark Blue Cross Blue Shield, Highmark Choice Company, Highmark Health Insurance Company, Highmark Coverage Advantage Inc., Highmark Benefits Group Inc., First Priority Health, First Priority Life or Highmark Senior Health Company. Your plan may not cover all your health care expenses. Read your plan materials carefully to determine which health care services are covered. For more information, call the number on the back of your member ID card or, if not a member, call 866-459-4418. 04/25 MX4862656



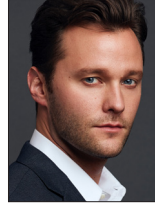
WHO'S WHO



**CATE
HAYMAN**



**DAISY
WRIGHT**



**MATTHEW
HYDZIK**



**JORDAN
BARRON**



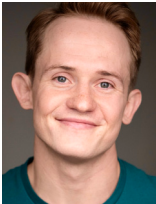
**RYAN
CAVANAUGH**



**MICHAEL
BRIAN DUNN**



**KEVIN
HACK**



**KYLE
KEMPH**



**ALLAN M.
SNYDER**



**HALLIE
CAMACHO**



**LAUREL S.
DENK**



**BELLAMY
KELLY**



**HAILEY
KENYON**



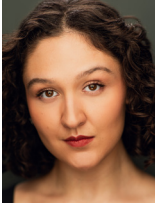
**LANCE T.
BARKER**



**BRETT
BARTHELEMY**



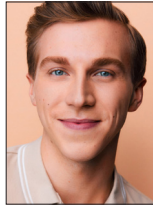
WHO'S WHO



**BELLA
BILANDZIJA**



**JORDAN
TREMAINE
DELEON**



**MATHEW
FEDOREK**



**LAURA
GULEY**



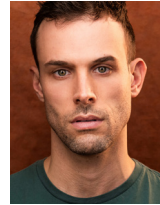
**CARLY
HAIG**



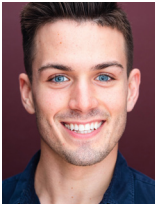
**THOM
HENKE**



**LIZ
LECLERC**



**JUSTIN
MOCK**



**JUSTIN
O'BRIEN**



**MAILE
ORAVITZ**



**BRITTANY
PENT ROHM**



**MADYSEN
PIPER**



**MICHAELA
PLUMMER**



**KAI
SACHON**



**BB
STONE**



**JASMINE G.
SWABY**



WHO'S WHO - CAST

CATE HAYMAN (*Elsa*) is so tickled to be playing Elsa for a second time and this time, in the 'burgh! Some favorite theatre credits include: Elsa in *Disney's Frozen* (Ogunquit), Worker in *Hadestown* (National Tour), Petra in *A Little Night Music* (Denver Center, Henry Award) and Sally Bowles in *Cabaret* (SF Playhouse, Critics Choice Award, TBA Award). Television: *And Just Like That*, *Evil*. Carnegie Mellon. Thank you to all my CMU professors, I hope I make you proud. For Kaf, the real queen of the elements. <3 @cate.hayman

DAISY WRIGHT (*Anna*) is delighted to be at Pittsburgh CLO! Credits include: *Disney's Frozen* (Anna), *Anastasia*, and *Jersey Boys* at Tuacahan; *Dames at Sea* (Ruby), *Rocky Horror* (Janet) and *42nd Street* at Bucks County Playhouse; *Natasha, Pierre...* (Sonya), *Rocky Horror* (Janet), *Christmas Carol*, and *Into the Woods* at ZACH; Additional credits: Munny, Goodspeed, North Shore, and MTWichita. BFA University of Oklahoma. Thanks to Michael, Robbie, and HCKR. Love to Mom and Jordan! www.daisyjanewright.com @oops.a.daisy.jane

MATTHEW HYDZIK (*Kristoff*) Broadway: Gregg Allman in *The Cher Show*, Buddy in *Side Show*, Greg in *It Shoulda Been You*, Tony in *West Side Story*, and Kenickie in *Grease*. Off-Broadway: John in *Tomorrow Morning*. National tours: *If/Then*, *RENT*, *Fame*, *Grease*, *Flashdance*. Special appearances with LA Philharmonic, Kennedy Center, Lincoln Center, Lyric Opera of Chicago, MUNY, Planet Hollywood Las Vegas, Anneberg Theater Palm Springs, ACT and Edinburgh Fringe. Proud Pittsburgh native and graduate of Penn State. All my love to my Megan and Grace Willow.

JORDAN BARRON (*Sven*) Credits include *Cinderella*, *Rocky Horror*, *Christmas Carol*, *Mary Poppins*, *Spring Awakening* with ZACH Theatre; *Billy Elliot* and *Oklahoma!* with Lyric Theatre OKC; *Cinderella* with Deaf Austin Theatre; *The Best Little Whorehouse in Texas* with Broadway Rose Theatre Company; *Wizard of Oz*, *Sound of Music*, *Footloose*, *The Music Man*, *Beauty and the Beast*, *My Favorite Year*, and *Annie Get Your Gun* with Zilker Theatre Productions; *Big River* with TexARTS. BFA from the University of Oklahoma.

RYAN CAVANAUGH (*Oaken, Bishop, Townsperson, Guard, Off-Stage Singer*) always grateful to be a part of any Pittsburgh CLO production. This summer will mark Ryan's 12th CLO production performing in *Camelot* and *Disney's Frozen* (Oaken)! Pittsburgh CLO credits: *The Music Man* (Marcellus), *The Perfect Mate* (Homebody), *Guys & Dolls*, *Anything Goes*, *South Pacific*, *Aida*, *Shrek the Musical*, *Damn Yankees*, Disney and Cameron Mackintosh's *Mary Poppins*, and *Man of La Mancha*. Favorite Regional Theatre: Goodspeed Opera House, Asolo Repertory Theatre, and national tours. When Ryan is not on stage, he's teaching theatre at Pittsburgh CAPA High School with the best students a teacher could ask for. Always thankful for my Mom, Dad, and Jenna for the love and support that keeps me going. |

CLO ACADEMY Alum

MICHAEL BRIAN DUNN (*Duke of Weselton*) Pittsburgh CLO: *CATS*, *Full Monty*, *Grease*, *Spamalot*. Broadway: *Dr. Zhivago*, *The Life*, *CATS*, *Guys & Dolls*, *Amazing Grace*, *Big River*, *Sweeney Todd*, *Baby*. First National: *Come From Away*, *HMS Pinafore* (Stratford Festival), *Amadeus*. Off Bway: *Death of Von Richthofen*, *Lenny & the Heartbreakers*, (NY Shakespeare Festival), *Perfect Crime*, and more, Regional theaters: Arena Stage, Cincy Playhouse, Maltz Jupiter, Actors Theater Louisville, Walnut St, and more, Film/TV: *Holiday Spectacular* (Hallmark, Mr.Matthews), *Julie&Julia* (Ivan Cousins), *Law & Order*, *S.V.U.*, *Trial By Jury*, *Almost Family*.

KEVIN HACK (*Hans*) is excited to be making his Pittsburgh CLO debut with *Disney's Frozen!* Internationally recognized as Tony in *West Side Story* with over 500 performances (National Tour, Int'l Tour, Cape Town, South Africa). Tours: *Beautiful: The Carole King Musical*. Select Regional Theatre: *Beautiful*, Paper Mill Playhouse; *Miss Saigon*, WPPAC; *Beauty & The Beast*, Maltz Jupiter, Arvada Center, & MtWichita. Thanks to Roger, Julie, and the team at PCLO for making this all happen. Love to Jenna & Adam. Galatians 1:3-5

KYLE KEMPH (*Olaf*) Is honored to be making his Pittsburgh CLO debut with his favorite snowman! Select Regional Theatre: Tuacahn



WHO'S WHO - CAST

Amphitheater, Transcendence Theatre, Dallas PAC, Denver Center, Slow Burn Theatre, Cincinnati Memorial Hall, Porthouse Theatre, Forestburgh Playhouse, Suncoast Broadway, Virginia Musical Theatre. Cruise: Headliner on all major cruise lines alongside The MidAtlantic Men & The Company Men. An abundance of gratitude to PCLO, KC Starlight, and the Lied Center. Special thank you to Michael and Robbie for continuing to believe in him. BFA Kent State. An Ohio native, Kyle now resides in Las Vegas with his exceedingly patient wife, Maddie. www.kylekemp.com @kyle.kemp

ALLAN M. SNYDER (*Pabbie, Guard, Off Stage Singer*) returns to Pittsburgh CLO for his 5th summer after appearing in *The Music Man* and *West Side Story* last year. Broadway/Tour: *Les Misérables*, *The Phantom of the Opera* (title role). Previous PCLO credits include 10 summer shows, 6 seasons of *A Musical Christmas Carol* and *The 39 Steps* at the CLO Cabaret. Other Pittsburgh credits include Pittsburgh Public Theater, Lincoln Park PAC, Pittsburgh Musical Theatre and PICT. Thank you for supporting local arts organizations and local artists!

HALLIE CAMACHO (*Young Anna*) is thrilled to make her professional theatre debut as her dream role, Young Anna! At 8 years old, Hallie is a passionate performer who honed her skills at Pittsburgh CLO Academy. Hallie extends endless gratitude to her family, directors, crew, Pittsburgh CLO, Miss Amy, Kayla, and her nearly 1 million YouTube channel subscribers. Find Hal on FamousBirthdays.com too! @HallieOnStage114 | **Student of CLO ACADEMY**

LAUREL S. DENK (*Young Elsa*) is thrilled to be joining the cast of *Disney's Frozen* as Young Elsa. At age 10, she has been blessed with past credits including Matilda in *Matilda* at Little Lake Theater, Jane Banks in *Mary Poppins* at Old Schoolhouse Players, and Susan in *White Christmas* at the Comtra Theater. Laurel would like to thank her family, friends, and teachers for their continuous support. She can't hold back her excitement anymore and is ready to Let it Go. | **Student of CLO ACADEMY**

BELLAMY KELLY (*Young Anna*), age 10 from Kansas City, is thankful for the opportunity to be building a snowman with the *Frozen* cast &

crew! Recent credits: *Billy Elliott* (Susan Parks), *Matilda Jr.* (Lavender), *Lion King Jr.* (Pumbaa), & *Annie Jr.* (orphan Molly). Endless gratitude to her family, friends, teachers, voice coach Leayn Losh and the one and only acting coach, Franci Talamantez-Witte, for their encouragement & support for doing what she loves! @Bellamy_on_stage

HAILEY KENYON (*Young Elsa*) is honored to be playing Young Elsa in *Disney's Frozen*. Hailey is a 13-year-old rising 8th grader from Kansas City. Previous credits: *The Sound of Music* (Gretl VonTrapp), *Secret Garden* (Mary Lennox), and *Matilda* (Lavender). Hailey would like to thank God, the directing team for this amazing opportunity, and her family and friends for all of their support!

LANCE T. BARKER (*Ensemble, Assistant Dance Captain*) is ecstatic to be returning to Arendelle! Originally from Salt Lake City, Utah, Lance is a proud alumni of Las Vegas Academy of Performing Arts and The University of Utah (BFA Modern Dance). Performance credits: National Tours: *Anastasia* 2nd National. Regional: Tuacahn Amphitheater, Pioneer Theatre Company. Cruise Ship: (RCCL) *CATS*, *Hairspray*, *Saturday Night Fever*. Concert Dance: *Odyssey Dance Theatre*. Lance would like to thank his family and friends for their continual support! @dancinlance

BRETT BARTHELEMY (*Ensemble*) is a rising sophomore at Pace University, where he is majoring in Musical Theatre and minoring in Commercial Dance. Brett is happy to be back at Pittsburgh CLO for *Camelot* and *Disney's Frozen*, where he previously performed in *Seussical* and *A Chorus Line*. Recently, Brett finished his run of *Oklahoma!* at Pace University and has worked for the American Dance Machine for the 21st Century. All glory to God and a special thank you to my parents! Insta: @brett.barthelemy | **CLO ACADEMY Alum**

BELLA BILANDZIJA (*Swing, u/s Elsa*) is thrilled to be joining the company of *Disney's Frozen* as her second production with Pittsburgh CLO. This past spring, she received her BFA in musical theatre with a dance minor from Point Park, where she performed as Rita Racine in *Steel Pier*, among other productions



WHO'S WHO - CAST

Bella Bilandzija Bio Continued...

such as *Legally Blonde* and *Sense and Sensibility*. Bella is a SoCal native and will be moving to NYC in September! Love you, Mom and Dad! @bilandzijabella

JORDAN TREMAINE DELEON (*Swing, u/s Hans*) is a Kansas City native based in NYC. National Tour: *Peter Pan*. Regional: *Meet Me in St. Louis* (Theatre Aspen); *Cats, Ragtime*, Disney's *Beauty and the Beast* (Music Theatre Wichita); *Grease* (Starlight Theatre); *Chicago*, Disney's *The Little Mermaid* (The Lexington Theatre Co.); *Holiday Inn* (Arts Center of Coastal Carolina); *Bye Bye Birdie* (Music Theatre Kansas City). BFA '23, University of Oklahoma. Special thanks to Mom & Dad! @jordantdeleon

MATHEW FEDOREK (*Ensemble, u/s Duke of Weselton*) is a proud Pittsburgh native and grateful to be returning home for his 11th show with Pittsburgh CLO. National Tour: *Funny Girl*. Regional: PCLO, The Muny, KC Starlight, Lincoln Park, Arizona Theatre Company, West Virginia Public Theater. BFA from Penn State. Thank you to everyone on the *Frozen* team, his agents at CTG, his parents, and his sister, Marena. @mathew.fedorek | **CLO ACADEMY Alumni**

LAURA GULEY (*Ensemble, u/s Olaf*) is thrilled to be returning to Pittsburgh CLO for her 3rd season. PCLO credits: *Seussical* (Mrs. Mayor), *The Music Man*, *Anything Goes*. National Tour: *Tootsie* (Sandy U/S). Regional: *42nd Street* (Peggy Sawyer, Theatre by the Sea); *Titanic* (Kate Murphey, Marriott Theatre); *The Music Man* (U/S Marian, Marriott Theatre); *A Christmas Story* (Goodspeed Opera House); *White Christmas*, *Joseph...Dreamcoat*, *Mary Poppins*, *Wonderland* (Tuacahn Amphitheater). Immense gratitude to the entire PCLO team. Love to Katie and the crew at PMA, Mom, Dad, Jacob and Jilly. Penn State. @lauraguley

CARLY HAIG (*Ensemble, Dance Captain*) is elated to be making her Pittsburgh CLO debut in a show that she loves so dearly! Favorite credits include: National Tours: *Hairspray* (Brenda/Swing), *Anastasia* (Swing). Regional credits: *Disney's Frozen*, *Anastasia*, *Jersey Boys* (Tuacahn), *Holiday Inn* (MTW), *Beauty and the*

Beast (La Mirada/Moonlight), *West Side Story* (5-Star). Cruise Ship: *Grease* (RCCL). Carly is also working towards becoming a financial counselor to help fellow artists feel financially empowered. Much love to her family and a big thanks to the creative team.

THOM HENKE (*Ensemble, u/s Pabbie, u/s Sven*) is thrilled to be returning to Arendelle. Previous: *Disney's Frozen* (Tuacahn), *Anastasia* (Nat'l Tour, Lincoln Center, Tuacahn), Nick Massi in *Jersey Boys* (Tuacahn, Weathervane), Bobby in *A Chorus Line* (Penn Shakes, Weathervane), Lancelot in *Camelot*, Puck in *A Midsummer Night's Dream*. Television: *Dopesick* (Hulu), *The Late Show with Stephen Colbert* (CBS). Thanks to Robbie and Michael. @thomhenke

LIZ LECLERC (*Queen Iduna, Ensemble, u/s Anna*) is thrilled to return to Pittsburgh CLO for *Camelot* and *Disney's Frozen*! Previous PCLO credits include Hope Harcourt (*Anything Goes*) and Ursula/Nun/Ensemble (*The Sound of Music*). Liz is a recent graduate of Carnegie Mellon University (BFA MT '25) where she performed as Kate McGowan in *Titanic* (Dir. Telly Leung). Most recently, Liz sang alongside Ariana DeBose, Denée Benton, Andrew Keenan-Bolger, Sara Chase, Alysha Deslorieux, and more in the Tom Kitt & Friends concert at 54 Bellow. Liz also performed with Stephen Schwartz at the Greer Cabaret Theater.

JUSTIN MOCK (*Ensemble*) is thrilled to be doing his first show at Pittsburgh CLO! He's Pittsburgh born and raised, as well as a graduate of Point (your feet) Park University. Catch him dancing in *Etoilé* on Amazon Prime! So much love to his family, friends and mentors for their love and support; especially his parents, Ron and Liz as well as his fiancé, Brandon. Follow my adventures! @j_mockery reps: the incredible Hudson Artist Agency

JUSTIN O'BRIEN [he/him] (*Ensemble, u/s Oaken*) is so excited to be in Arendelle for the Summer! Recently; *Take the Lead*, *The Little Mermaid* (Paper Mill), *Anastasia*, *Jersey Boys*, *Disney's Frozen* (Tuacahn), *Mean Girls*, *Trevor the Musical*, *Hairspray* (RCCL), *Kinky Boots*. Endless gratitude to his family and friends, without whom none of this would be possible. Thank you to the entire creative team and @bloyncyc for the never-ending support! @justino.brien



WHO'S WHO - CAST

MAILE ORAVITZ (*Ensemble*) is delighted to be in her first Disney production! A Pittsburgh native, she is based in NYC and a recent graduate from The Institute for American Musical Theatre. Regional: *Lerner & Loewe's Camelot*, *Madame Clicquot: A Revolutionary Musical* World Premiere, *West Side Story*, *A Chorus Line*, *A Broadway Musical Celebration*, *The Wizard of Oz* (PCLO). Industry: Kenneth Gartman's *GottaSing!*, *Cabaret* at Green Room 42, Sara in a staged reading of *Picnic at Hanging Rock*, *The Cher Show* National Tour pre-production (IAMT). It takes a village to make dreams come true—she gives all her love to hers! Rep: Henderson Hogan Agency www.maileoravitz.com | **CLO ACADEMY Alum**

BRITTANY PENT ROHM (*Ensemble*) is excited to return to Pittsburgh CLO for another magical summer! She was previously seen in *Guys & Dolls* and *Seussical*. A proud Pittsburgh native and graduate of CAPA and Point Park University, she's honored to perform on a stage that truly feels like home. This show is dedicated to her dad, whose love continues to inspire her every day. Heartfelt thanks to this incredibly talented team, and much love to her family, friends, and students. @brittpent

MADYSEN PIPER (*Ensemble*) an alumni of Point Park University, is excited to let the storm rage on-stage! Her credits include: *Disney's Frozen* (*Ensemble*), *Anastasia* (Young *Anastasia*/Paulina/*Ensemble*), *Jersey Boys* (*Swing*) - Tuacahn Amphitheater, *Anything Goes* (*Lady Fair Ensemble*) - PCLO, and *A Christmas Story* (*Ensemble*) - Surflicht Theater. Madysen thanks her friends and family for the continued love and support over the years. She cannot wait to be a part of the magic of *Frozen* once again! @mady_pipes

MICHAELA PLUMMER (*Bulda, Ensemble*) is so excited to be part of Pittsburgh CLO's production of *Disney's Frozen* as her first professional job! She fell in love with the stage at just 5 years old and has been working towards a career in performance ever since. She is currently earning her BFA in Musical Theater at Carnegie Mellon's School of Drama, entering her third year in the fall. Michaela gives all the credit to God and is eternally thankful for the support of all her friends and family.

KAI SACHON (*King Agnarr, Ensemble, u/s Kristoff*) is pumped to join Pittsburgh CLO for the 2025 Summer of Musicals! Kai was seen last year as *The Grinch* in PCLO's *Seussical*. In 2024, he won the Gene Kelly Award for Best Actor and went to NYC as a nominee at the National High School Musical Theatre Awards® (Jimmy Awards). Now, he's studying Musical Theatre at the University of Michigan. Go Blue!! Kai would like to thank his family, friends, and the entire cast and crew! @kai.sachon | **CLO ACADEMY Alum**

BB STONE (*Ensemble*) is excited to return to Pittsburgh CLO! Select Regional: *West Side Story* (PCLO, KC Starlight), *Seussical* (PCLO), *The Cher Show* (Ogunquit Playhouse, The Gateway), *Dirty Rotten Scoundrels* (Maltz Jupiter Theatre), *Disney's Newsies* (The Gateway). OCU Alum. Endless love and gratitude to her support system and her agents at The Mine. @bbstone

JASMINE G. SWABY (*Ensemble*) is a recent graduate of Point Park University. Graduating Summa Cum Laude she was able to complete a BFA in dance with a concentration in jazz as well as a minor in biological sciences with a pre-med track. Jasmine has gratefully had the opportunity to perform works by brilliant choreographers such as Martha Nichols, Rennie Harris, Teena Marie Custer, Kiesha Lalama, Marc Spaulding, Crystal Frazier, Ronen Koresh, Norbert De La Cruz III, Jesse Factor, and Karla Puno Garcia.

WHO'S WHO - CREATIVE

MICHAEL HEITZMAN (*Director*) is delighted to return to Pittsburgh CLO. His PCLO credits include *Disney's Beauty and the Beast* and *Seussical*. He resides in New York City, where he serves as the Artistic Director of New Musical Development at the historic Lucille Lortel Theatre. His critically acclaimed production of *42nd Street* was produced at The Ordway Center for the Performing Arts and Drury Lane Theater in Chicago (Jeff Award nominee, Best Director). Other recent credits: Tuacahn: *Disney's Beauty and the Beast*, *Charlie and the Chocolate Factory*, *Joseph...Dreamcoat* (starring David Archuleta), *Disney's Frozen* (regional premiere), *Disney's Newsies*, *Big River*,



WHO'S WHO - CREATIVE

Michael Heitzman Bio Continued...

and *Legally Blonde* at Broadway Sacramento, *Shrek*, and Disney's *The Little Mermaid* (IRNE Award nominee, Best Director) at NSMT, VICES (Jeff Award nominee, Best Director). He is a proud member of SDC. Michaelheitzman.com

ROBBIE ROBY (*Choreographer*) is excited to be back in Pittsburgh! Previous Pittsburgh CLO productions include *Seussical* (2024), *Sister Act* (2022), and Disney's *Beauty and the Beast* (2018). Recently, Robbie choreographed the national tour of *Hairspray* (starring RPDR's Nina West), and regional premieres of Disney's *Frozen* and *Charlie and the Chocolate Factory*. Other select productions: *Joseph... Dreamcoat* (starring David Archuleta), *Footloose*, *The Addams Family*, *The Music Man* (Sacramento Music Circus), Disney's *The Little Mermaid* (The 5th Avenue Theatre), *Elf* and *Shrek* (Walnut Street Theatre), *Disney's Beauty and the Beast* (Ordway Theatre, La Mirada Theatre, TCA), and *Broadway Backwards* (New Amsterdam Theatre; NYC). Since 2021, Robbie has been the Creative Supervisor for the Regent Seven Seas Splendor and NCL Jewel with NCL Creative Studios. As a performer, Robbie was the dance captain for Broadway/Touring productions of *Billy Elliot*, *Hairspray*, *Disney's The Little Mermaid*, and *Monty Python's Spamalot*.

CATIE BROWN (*Music Director, Conductor*) is a Pittsburgh-based Music Director, Educator, and Musician, with an extensive professional performance resume. Currently: Staff Accompanist for Carnegie Mellon University's School of Drama, Voice Instructor for the CMU Pre-College Program, Voice/Piano Instructor for the Pittsburgh CLO Academy, and Music Director at All Saint's Parish in Butler, PA. Catie has previously been a faculty member at Robert Morris University and Point Park University's Conservatory of Performing Arts. Regional theater work: Pittsburgh CLO, Pittsburgh Public Theater, Pittsburgh Symphony Orchestra, Pittsburgh Musical Theater, R.W.S. and Associates, Pittsburgh Playhouse, Lincoln Park Performing Arts Center, St. Vincent Summer Theater, and several Broadway National Tour Companies. Catie regularly serves as Music Director/Accompanist for performances and

master classes alongside the most prolific stars of Broadway and beyond. M. Ed. in Educational Leadership (University of Cincinnati). B.M. in Music Education (Slippery Rock University). www.CatieBrown.com | **CLO ACADEMY Faculty**

TIM MACKABEE (*Scenic Designer*) Broadway: *The Elephant Man* (starring Bradley Cooper), *Mike Tyson: Undisputed Truth* (dir. Spike Lee.) West End: *The Elephant Man*. Off-Broadway: MCC: *Seared* (OCC Award), Atlantic: *Guards at the Taj* (Lortel Award), *Describe The Night*, *The Penitent*, *Our New Girl*, Roundabout: *Darling Grenadine*, *The Last Match*, MTC: *Poor Yella Rednecks*, *Vietgone*, *Important Hats of the Twentieth Century*, LCT: *Luce*, Vineyard: *Gigantic*, *Heathers The Musical*. Music Video: Carly Ray Jepsen's, "Surrender My Heart." TV: *Amy Schumer: Live at the Apollo* (HBO), *Gotham*, *Smash*, *The Today Show*, *Football Night in America*. Education: North Carolina School of the Arts, Yale School of Drama. @timmackabeedesign, timothymackabeedesign.com

ADAM KOCH (*Additional Scenic Elements*) Broadway: *A Wonderful World: The Louis Armstrong Musical*. Additional credits include off-Broadway, national tours, and projects around the world, including: *Dreamgirls*, *Sister Act* (Seoul); *Pretty Woman*, *Mean Girls* (São Paulo). Hundreds of regional productions with multiple awards and nominations, including an 'Outstanding Scenic Design' Carbonell Award for *A Wonderful World: The Louis Armstrong Musical*, (Miami New Drama). Additional projects for Virgin Voyages, Norwegian Cruise Lines, live events, and immersive outdoor production designs. Education: Carnegie Mellon University. For William and Mary Koch. See more on Instagram @instadamkoch.

PAUL MILLER (*Lighting Designer*) Internationally, Paul's work has been seen on stage at the Stratford Festival, London's West End, Vienna, Teatro alla Scala (Milan), South Africa, China, Manila, Iceland and São Paulo. On Broadway, he has designed 5 musicals and been the Associate/Assistant on 22 others. Notable Off-Broadway favorites include: *Desperate Measures*, *Clinton!*, *Pageant*, *Vanities - the Musical*, *Waiting for Godot*, *Nonsense*,



WHO'S WHO - CREATIVE

Encores! (9 shows). National Tours: *Hairspray*, *Elf*, *Wizard of Oz*, *Sweeney Todd*, *The Producers*, *RENT*, *Shrek*. Regional: Arizona Theatre Company, The Old Globe, Dallas Theatre Center, Chicago Shakespeare, Idaho Shakespeare, Asolo Rep, ACT, Cleveland Playhouse, Pasadena Playhouse, Goodspeed, and others. Television: *Evil* (CBS & Paramount+), *Live from Lincoln Center*, more than 20 Netflix specials, and the internationally televised New Year's Eve Celebration from Times Square (for 25 years).

RYAN J. MOLLER (*Costume Designer*) Previously for Pittsburgh CLO: *Seussical*. Regional credits include: *Disney's Frozen* (regional premiere), *Charlie and the Chocolate Factory*, *The Hunchback of Notre Dame*, *Mary Poppins*, *Joseph...Dreamcoat*, and *Beauty and the Beast* (Tuacahn), *Cinderella*, *Matilda* (Syracuse Stage) *Beauty and the Beast* (Ordway) *The Wiz*, *Smokey Joe's Cafe*, *Treasure Island*, *42nd Street*, *Chicago*, *Legally Blonde* (Fulton), *Play That Goes Wrong*, *Moon Over Buffalo*, *Steel Magnolias* (Oregon Cabaret), *White Christmas*, *12 Angry Men* (Engeman), *Guys & Dolls*, *Hello, Dolly!* (MSMT), *Rock for Ages* (NCL). Ryan has worked 5 seasons with Santa Fe Opera and associate designer for *Dona Del Lago* at the MET Opera, NYC. Next up: 3 more *Disney's Frozen*: PCLO, PCPA, Syracuse Stage. Member USA 829. More info: RyanMollerDesigns.com

JOSH LIEBERT (*Original Sound Designer*) is NYC based but works across the US and Canada. Highlights include: US Regional: *Once*, *Jersey Boys* (Casa Mañana); *Newsies*, *Disney's Frozen*, *Anastasia*, *Tarzan*, *Hunchback*, (Tuacahn); *Next to Normal*, *In the Heights* (Westport); Canadian Regional: *Come From Away* (Gander, NL), *Tell Tale Harbour* (Charlottetown); *Maggie* (Theatre Aquarius); Off-Broadway: *We are the Tigers*, *The Other Josh Cohen* (2012). www.joshliebert.com

SARAH SPECK (*Sound Designer*) is a sound engineer, designer, and musician from Palmyra, PA. Sarah recently joined the Benedum Center as the House Sound Engineer and is excited to work with Pittsburgh CLO. Recent sound designs include *Waitress* the "Lulu" tour, and *Come From Away*, *Kinky Boots*, and *Something Rotten!*, at Rocky Mountain Repertory Theatre. Recent mix credits include *Come From Away* Gander

Company, *Mrs. Doubtfire* 1st National, *Annie*, *Waitress*, *A Bronx Tale*, and John Leguizamo's *Latin History for Morons* national tours.

JEFF A. KNAGGS (*Hair and Makeup Designer*) is a proud pug daddy and has been working in theatre for 25 years. After designing the 25th Anniversary *Mamma Mia!* tour, he has returned to Royal Caribbean to design four shows, including *The Wizard of Oz*. For The Engeman Theatre, he has designed *Beautiful*, *Beauty and the Beast*, *Jersey Boys*, *Margaritaville*, and *Clue*. For NCL he has designed *Kinky Boots*, *Footloose*, *Six*, and *After Midnight*. Royal Caribbean: *Hairspray*, *Flight: Dare to Dream*. *The Silk Road*, *Showgirl!*, *The Effectors*. Pittsburgh CLO: 2017, 2018, 2019, 2022, 2023, and 2024 Seasons. TUTS: *Memphis*, *Dreamgirls*, *Into the Woods*, *How to Succeed...*, *The Rocky Horror Show*, *Million Dollar Quartet*, *Heathers*, *Mary Poppins*, *Sweet Potato Queens*, *Bonnie & Clyde*, *A Christmas Story*, *The Music Man*. Tuacahn: *Beauty and the Beast*, and *Joseph*. Theatre Aspen: *Beautiful*. Regional: *Mamma Mia!*, *Peepshow*, *Young Frankenstein*, *Disney's The Little Mermaid*, *Dancing With The Stars*, *America's Got Talent*, and *Into the Woods* at The Hollywood Bowl.

BRYCE CUTLER (*Video Designer*) Previously with Pittsburgh CLO: *Lerner & Loewe's Camelot*, *Once On This Island*, *Guys & Dolls*, and *The Perfect Mate*. Other designs include *Grand Horizons* on Broadway; 2020 Pulitzer Prize finalist *Soft Power* at The Public Theater; along with world premieres by John Patrick Shanley, Dael Orlandersmith, Matt Aucoin, and Grammy Award winner Steve Mackey. Other projects include Samsung's virtual reality television series *Interpretation of Dreams*; *Feel The Pride*, an AI powered audio-visual installation with St. Vincent; and a virtual reality arcade for Muse's 2019 World Tour. He is a graduate of Carnegie Mellon University. brycecutter.com

KRISTEN ANDERSON-LOPEZ & ROBERT LOPEZ (*Music and Lyrics*) are the Oscar, Grammy, and Emmy winning songwriting team behind the Disney animated films, *Frozen* and *Frozen 2*. Together they also wrote the Oscar winning song "Remember Me" from Pixar's *Coco*, as well as songs for Marvel's



WHO'S WHO - CREATIVE

Kristen Anderson-Lopez & Robert Lopez Bio Continued...

WandaVision (Emmy Award win for "Agatha All Along") and its spin-off series *Agatha All Along*. They adapted *Frozen* for the Broadway stage and are co-creators of the Hulu original series *Up Here*. Robert co-conceived and co-wrote the hit musicals *Avenue Q* and *The Book of Mormon*, both earning him Tony Awards. Kristen's show *In Transit* made history as the first all a cappella musical to run on Broadway after an award-winning Off-Broadway run. Lopez and Anderson-Lopez have written for television, film and stage, including *Finding Nemo: The Musical*; songs for "The Wonder Pets" (two Emmy Award wins) and the *Winnie the Pooh* animated film. Lopez and Anderson-Lopez both serve on the Dramatists Guild Council. Graduates of Yale University and Williams College, respectively, they now reside in Brooklyn with their family.

JENNIFER LEE (*Book*) is the Academy Award®-winning writer and director of Walt Disney Animation Studio's *Frozen*. For her work on *Frozen*, Lee received numerous awards including a Golden Globe, a Critics' Choice Award, a BAFTA Award, and an Academy Award®. She wrote the book for the Broadway stage adaptation of *Frozen*, receiving a Tony Award® nomination for Best Book of a Musical, and wrote and directed the animated feature *Frozen 2*. Her Disney Animation career began as co-writer of the Oscar®-nominated *Wreck-It Ralph*. She went on to co-write the story for the Academy Award®-winning *Zootopia*, and served as Chief Creative Officer of Walt Disney Animation Studios from 2018 to 2024, when she began working on *Frozen 3* and *Frozen 4*. She has executive produced numerous award-winning animated films including *Moana 2*, *Raya and the Last Dragon* and the Academy® Award-winning *Encanto*. Her graphic novel *As I Dream of You* will be published in 2026.

RENÉE RIMLAND (*Production Stage Manager*) is excited to be back for another amazing season at Pittsburgh CLO. Broadway: *Beauty and the Beast*, *Cabaret*, *Fosse*, *Jekyll & Hyde*, *Steel Pier*. National Tours: *42nd Street*, *Beauty...*, *Les Misérables*, *Joseph and the Technicolor Dreamcoat*, *The Phantom of the Opera*, *Savion!*, *Footnotes*, *Buddy! The Buddy Holly*

Story, *Evita*, *Bye! Bye! Birdie*. Off-Broadway: *My Name is Rachel Corrie*, *Once Around the Sun*, *Menopause—The Musical*, *I Love You, You're Perfect, Now Change*, *Dinner with Friends*. Regional: Over 50 musicals at Pittsburgh CLO and North Carolina Theatre. Resident PSM for Florida Grand Opera. Proud member of Actors' Equity Association and mama of a wonderful daughter. For JRR, always.

KELLY HAYWOOD (*Assistant Stage Manager*) is excited to be a part of this new musical. Past Pittsburgh CLO productions: *Peter Pan*, *In the Heights*, *Aida*, *Mamma Mia!*, *The Color Purple*, *A Musical Christmas Carol*, *Million Dollar Quartet*, *Titanic*, *A Chorus Line*. Kelly has also done several productions with Pittsburgh Public Theater, Ballet and Opera. In her down time she also works with IATSE Local 3 and 787.

NATALIE HRATKO (*Assistant Stage Manager*) *Sammy Miller and The Congregation*, *All the Devils Are Here*, *Dianne McIntyre's In the Same Tongue*, *And So We Walked*, *On Beckett* (Octopus Theatricals). International touring productions + credits: The Ailey School, Ars Nova, Ballet Idaho, Ballet Met, Baltimore Center Stage, The Cape Playhouse, Cherry Lane Theatre, Collage Dance Collective, Complexions Contemporary Ballet, Dance Theatre of Harlem, Manhattan Theatre Club, New York Theatre Workshop, NYSAF Powerhouse Theater, Pittsburgh Public Theatre, The Public Theater, Tulsa Ballet.

MARK FLEISCHER (*Executive Producer*) has served as the artistic and administrative head of the Pittsburgh CLO since June of 2020. His inaugural year brought the challenges of the shutdown of live indoor theatre, but it was during that time that Mark spearheaded the PCLO's move back to its outdoor roots with two spectacular musicals produced at Heinz Field with support from the Pittsburgh Steelers and many local donors. *The Wizard of Oz* and a star-studded *75th Anniversary Broadway Musical Celebration* brought the community together to experience the joy of musical theatre once more. He then oversaw the PCLO's return to live indoor performances in 2022. Before his appointment as Executive Producer Mark was PCLO's Producing Director (2018 – 2020) and its



WHO'S WHO - CREATIVE

Associate Artistic Director (2014 – 2018). Prior to joining PCLO, Mark was the Producing Artistic Director of Adirondack Theatre Festival (2007 – 2014) and Managing Artistic Director of Plano Repertory Theatre in suburban Dallas (1993 – 2002). With a passion for both classic and new shows, he has directed readings, residencies, revivals, and world premiere productions for theaters across the country. Mark's directing credits include a wide range of shows such as the musicals *Sunday in the Park with George* (which won 7 Dallas Theatre League Awards including Best Direction of a musical), *Passion, A Chorus Line*, *Ordinary Days*, and *My Favorite Year*, as well as classic plays including *A Midsummer Night's Dream*, *The Tempest*, *Hedda Gabler*, and *The Diary of Anne Frank*, plus numerous world premieres. Mark is a Board Member of the National Alliance for Musical Theatre (NAMT), chairing the organization's Member Resources Committee. He is also a member of The Broadway League where he serves on Intra-Industry and Audience Engagement committees. Locally Mark is on the Board of the Downtown Neighborhood Alliance. Mark holds a BA in English Literature and Communication Arts from Austin College and an MFA in Directing from the Theatre School at DePaul University.

PITTSBURGH CLO (*Producing Company*) has been the driving force for 78 years behind the preservation, creation and promotion of live musical theatre since 1946. Founded in the years following WWII as a way to bring Pittsburgh together for a community experience, the company has grown to become one of the largest regional musical theatre organizations in the country. The organization's commitment to preserving, creating, and promoting live musical theatre is evident in its diverse programming, which includes beloved Broadway classics as well as the development of new works. PCLO's dedication to nurturing emerging talent is commendable, with numerous artists (Billy Porter, Renée Elise Goldsberry, Rob Marshall, Kathleen Marshall, Shirley Jones and many more) launching their careers under its wing. The mission extends beyond the 3 show summer series with other ongoing initiatives such as the Pittsburgh CLO Academy of Musical Theatre, the Construction

Center for the Arts, the acclaimed Gene Kelly Awards for Excellence in High School Musical Theater and The National High School Music Awards® (The Jimmys). Every ticket purchased impacts our own hometown, Pittsburgh, in a variety of ways beyond the stage performance. Pittsburgh CLO has always been a proud economic generator, hiring local theatre professionals to bring the best musical theatre to life. Since 1946, loyal Patrons, Subscribers, and Donors have stood beside our organization to ensure production of Broadway caliber shows right here in our hometown. Pittsburgh CLO is excited to continue creating magical musical memories that are by Pittsburgh, for Pittsburgh and partnered with Pittsburgh all year long! For more information, please visit PITTSBURGHCLO.ORG

STARLIGHT (*Co-Producing Company*) Opened in 1950, Starlight is the largest and oldest performing arts organization in Kansas City, Missouri with a mission to connect the community through live arts experiences that entertain, inspire, and engage. Located in Swope Park, the historic, city-owned venue is the second-largest outdoor producing theatre in the country with almost 8,000 seats. Visit kcstarlight.com to learn more.

THE LIED CENTER FOR PERFORMING ARTS (*Co-Producing Company*) is Nebraska's Home for the Arts. Located at the University of Nebraska-Lincoln, the Lied presents the world's most iconic artists and major regional, national and international performances that entertain and inspire audiences. We offer something for everyone, including the best of Broadway, symphony orchestras, dance, music, theater and family programs. Artists at the Lied have ranged from Itzhak Perlman and Wynton Marsalis to the American Ballet Theatre and St. Louis Symphony. The Lied also is committed to educational outreach: Nearly 100% of visiting artists work with students in the days leading up to their performance. Visit us at liedcenter.org



THANK YOU TO OUR PCLO DONORS

ACT 2 IS MADE POSSIBLE BY YOU!

Thank **YOU** for your philanthropic support of the Pittsburgh CLO's Annual Campaign and Education Campaign (through **JULY 1, 2025**).

Our family of Pittsburgh CLO donors plays a critical role in advancing our mission to celebrate live musical theater **made by Pittsburgh, for Pittsburgh, and in partnership with Pittsburgh**. From breathtaking musicals produced in our hometown to inspiring creative and youth-arts initiatives, your generosity keeps breathtaking musical theatre affordable and accessible to everyone in our community.

DONOR KEY: IMO: In Memory Of | IHO: In Honor Of | (): Number of Years

THE PITTSBURGH CLO IS GRATEFUL FOR THE GENEROUS SUPPORT PROVIDED BY THE PITTSBURGH CULTURAL TRUST

CORPORATIONS

DIAMOND CIRCLE

\$25,000 AND ABOVE

#1 Cochran (18)
Baird (30)
Dollar Bank (23)
Healthcare Realty (8)
Highmark (32)
Howard Hanna
Real Estate Services (14)
KeyBank (12)
Omni William Penn Hotel (15)
PNC (70)
RSM (1)
Specialty Conduit
& Manufacturing (14)

GOLD CIRCLE

\$10,000 - \$24,999

Alco Parking (20)
Ashley Homestore
at the Highlands (4)
Breakaway Tours (1)
Chubb Group
of Insurance Companies (14)
Deloitte, LLP (17)
Delta Air Lines (8)
Diamonds by Rothschild (11)
Federated Investors
Foundation, Inc. (16)
Giant Eagle, Inc. (20)
Koppers (14)
The Frank E. Rath - Spang
& Company Charitable Trust (45)
ReedSmith (18)
UPMC (21)
Williams Coulson Johnson Lloyd
Parker & Tedesco, LLC (1)

SILVER CIRCLE

\$5,000 - \$9,999

AON (4)
Concord Theatricals (1)
Enkompas Technology Solutions (3)
First National Bank (2)
K&L Gates, LLP (17)
KPMG (20)
MSA Safety (58)
Pittsburgh Steelers (3)
Rush Order Tees (1)
TriState Capital Bank (3)

EXECUTIVE PRODUCER'S CIRCLE

\$2,500 - \$4,999

Assured Partners of Pennsylvania
Champ Printing Company (9)
Development Dimensions
International (12)
Leech Tishman (1)
Littler Mendelson, P.C. (2)
Madame Clicquot (2)
Ninja Transfers (1)
Post & Schell (10)
Schneider Downs (23)

PRODUCER'S CIRCLE

\$1,000 - \$2,499

Ampco-Pittsburgh
Charitable Foundation (30)
Bender Leadership Academy (5)
Tudi Mechanical Systems (3)

FOUNDATIONS

The Anne L. and George H. Clapp
Charitable and Educational Trust
Bozzone Family Foundation
The Charity Randall Foundation
The Clyde E. and
Trudi L. McAuley Fund
Community Foundation
of Fayette County
Cooper-Siegel Family Foundation
Edith L. Trees Charitable Trust
The Essential Foundation
The Falk Brothers Fund
Ganassi Foundation
The Grable Foundation
The Heinz Endowments
Irene C. Shea Charitable Foundation
Helen M. Knepper Memorial Fund
of The Pittsburgh Foundation/
Community Foundation of
Westmoreland County
The Jack Buncher Foundation
Laurel Foundation
Massey Charitable Trust Founders:
Harris B. Massey and
Doris J. Massey
McKinney Charitable Foundation
Milton G. Hulme
Charitable Foundation
Mohr Family Fund
of The Pittsburgh Foundation
National Alliance for Musical Theatre
Pauline Pickens Charitable Trust
The Pittsburgh Foundation

Rackoff-Loeb Family Fund
of The Pittsburgh Foundation
Richard King Mellon Foundation
Robert and Mary Weisbrod
Foundation
The Vernon C. Neal
and Alvina B. Neal Fund
W.I. Patterson Charitable Fund

PUBLIC SUPPORT

Allegheny Regional Asset District
City Of Pittsburgh
Department of the Treasury
Pennsylvania Council on the Art

GENE KELLY PRODUCERS SOCIETY

*PCLO's Gene Kelly Producer's Society
is a community of remarkable
philanthropists who share an
extraordinary commitment to
Pittsburgh CLO.*

TITLE PRODUCERS

\$25,000 AND ABOVE

Dan Booker IMO Debby Booker (37)
Stephen and Helen Hanna
Casey (33)
Joan Clark Davis (27)
The Estate of Eleanor Dragan (17)
Dolores Kara
IMO Michael J. Kara (25)
John Keith Maitland Fund of
The Pittsburgh Foundation/
Community Foundation of
Westmoreland County (48)
Robert C. McCartney (43)
Specialty Conduit
& Manufacturing, LLC (15)
Carol H. Tillotson
IMO Anne C.
and Arthur R. Hefren (28)
The Estate of Reverend
Thomas A. Wagner (31)
Leah and Jason Wilson
and the Wilson Family (8)

LEAD PRODUCERS

\$15,000 - \$24,999

Hal and Kimberly Burch (9)
N. David and Janet M. Campbell (1)
Gus and Annie Hanna Engel (6)
Joe & Kathy Guyaux (24)
Edward T. and Suzanne F.
Karlovič (22)
Deedra Knaus (8)



THANK YOU TO OUR PCLO DONORS

ACT 2 IS MADE POSSIBLE BY YOU!

LEAD PRODUCERS CONT'D...

Bill & Sandy Lambert
IHO our daughters:
Emily & Kelly (25)
Richard and Lynn Lipovich (10)
Mark & Diane Minnaugh (21)
Mr. and Mrs. Alexander Overstrom (5)

EXECUTIVE PRODUCERS

\$10,000 - \$14,999

William P. Anderson (25)
Joe & Karen DiVito (14)
Jeff and Lesley Evancho (3)
Mr. and Mrs. Peter J. Germain (20)
Mr. Allyn J. Lynch (13)
The Malandro Family (9)
Robert and Christine Pietrandrea (11)
Glenn & Stephanie Todd (13)
James R. Wiltman (20)

PRODUCING DIRECTORS

\$5,000 - \$9,999

Dr. Vitasta Bazaz-Sheeh
Sehgal - Fund
IMO Dr. Kuldeep Sehgal of
The Pittsburgh Foundation (22)
Mrs. Patti Matty Blenko
IMO Walter Blenko (43)
George and Ada Davidson (41)
George and Daphna Gans (9)
Vicki C. Henn (9)
Michael and Evonne Henry (8)
Leslie Hyde and Lou Santora (6)
Brian and Suzanne Koble (4)
Tom & Chris Kobus (28)
Cher Kotovsky
IMO Irwin Kotovsky (4)
Dr. Diane Beynon Landers (11)
Bryson and Meg Lesniak (2)
Nicholas Liparulo
IMO Anne Liparulo (12)
Margaret A. McLean
and Stanley Yorsz (12)
Janice and Ernie Meade (12)
Tim McVay and David Bush (6)
Laurie Burkhart Mushinsky (21)
Leah and Paul Ohodnicki (16)
Luke and Allison Sizemore (11)
Arlene & Barry Sokolow
IMO Anna & Nicholas Zelkovic (22)
Justice Debra and Stephan Todd (17)
Gary and Debbie Truitt (22)
Melissa Ungar (14)
Dennis and Diane Unkovic (16)
Mr. & Mrs. William H. Van Duzer (26)
Travis and Nikki Viglione Williams (9)
Tim & Linda Zimmerman (35)

PRODUCERS

\$3,000 - \$4,999

Anonymous
Pritam and Binu Advani (7)
Tripp and Nancy Amick (8)
Stephen and Dana Bloomberg (11)
Carolyn Bouchard (2)
Dr. Kerry Bron
and Mr. Robert Levin (2)

Phyllis and Tom Davidson (3)
Joy Dawso (16)
Jane & Michael Dixon
IMO Cheryl Young (26)
Melinda and James Edwards (9)
Cathy and Randy Emanuelson (7)
Jeff and Jennifer Erdely (4)
Kim & Curt Fleming (25)
Dr. Edward L. Foley (26)
David and Deborah Freeman (13)
Gary and Michele Gatto (4)
Patricia Gray IMO Charlie Gray (35)
Mr. & Mrs. Robert A. Hartan (23)
Greg and Debbie Knowles (10)
Raymond & Karen Love (23)
Michael and Wanda McGarry (10)
Jamie McGovern
and Rebecca Nugent (4)
Jim and Lisa McQuade (7)
Ed and Deb Moretti (9)
Kari Murphy (2)
Scott & Jennifer Neill (22)
Jordan and Laura Nicholas (7)
The O'Loughlin Family
Charitable Fund (24)
Christina O'Toole
IMO Paul & Helen Triko (14)
Paul and Paula Palmer
IMO Charlie Gray and
IHO Van Kaplan (22)
Jean Marie Perry (12)
Bob Powell (6)
Robin Randall (5)
Barbara M. Rankin (1)
Barbara Riehle (2)
Roseann Rosnick (4)
Jim and Linda Rumbaugh (4)
George and Helen Spalaris (12)
Eric and Michele Schaffer (19)
Randi L. Starr (9)
Mark and Tammy Steele (29)
Marcia and Louis Swartz (9)
Elizabeth Toole
IMO Mrs. Michael Kutsenkow (5)
Tom and Lynne VanHimbergen (5)
Mr. Richard J. Voller (38)
Carla J. Vrsansky, Esq. (20)
Sally Wade (38)
Matt Williams
in loving memory of
Teresa and Robert Williams (24)
Mr. & Mrs. W. Robert Wells (37)
Dr. Audrey Zelkovic
IMO Anna & Nicholas Zelkovic (13)

ASSOCIATE PRODUCERS

\$1,500 - \$2,999

Anonymous
Jen Bohland-Anhalt
& Joshua Anhalt (16)
Michele and Pat Atkins (4)
James Bann
IMO Kathryn Bann (10)
Meghan and Jose Barrera (11)
Elaine M. Bellin and Phyllis D. Coontz
IHO Patty Maloney (8)

Joyce Bender (10)
Anthony Benevento (2)
Paul E. Block IMO Don Arnheim
Beatrice Bonfiglio
IMO Alfred Bonfiglio (27)
W. Dennis and Penny Bossick (4)
Caleb Breckon (1)
Felicitas Caracoche (5)
James P. Cassaro (7)
Adam and Patricia Davidson (20)
Stacy and Christopher Dee (13)
Teresa and Christian Farls (2)
Elias Fedele (4)
Wynne Rooney Fedele
IMO George W. Rooney, Jr. (18)
Holly and Mark Fleischer (5)
Warren Fugate and Eileen Kopchik (6)
Edward and Lynn Gallagher (1)
Patrick A. Gray (7)
Mrs. Lori Giordano-Bosiljevac (4)
Richard S. Hamilton Foundation (22)
Michael and Tammy Hart (2)
MAC and George Hoover (7)
The Howe Family (4)
Donna and Keith Impink (2)
Mrs. Martha and Lawrence John (10)
Christy Kobus (12)
Christy and Aaron Kolko
IMO Dr. Susan Cohen (5)
Angela and Scott Langill (3)
Fred and JoEllen Leech (10)
Brandon Marzke (3)
Mary McFadden (1)
Marcia Metelsky (3)
Marcia S. Morton (52)
Deerfield Nimmicks (1)
Randall Olson (12)
William and Audia Otto (15)
John Jay Patterson
IMO Paula J. Patterson (1)
Elisa and Terry Poole (3)
Dawn Predmore
and Patrick Putorti (2)
Jana and Brett Randall (1)
Susie and Jerry Robinson (25)
Sarah and Dante Romito (1)
Donna and Keith Impink (2)
Ken and Toni Senatore (33)
Patrick Stefano (1)
Sterling Family Fund
of The Pittsburgh Foundation (12)
Betsy and Tom Teti
IMO Charles and Anne Lynn (27)
Joann L. Tissue (10)
LaShawnda A. Thomas (4)
Steven Voudouris (1)
Bob Williams (24)
Mr. John C. Williams, Jr. (29)



THANK YOU TO OUR PCLO DONORS

ACT 2 IS MADE POSSIBLE BY YOU!

MEMBER DONORS PATRONS

\$500 - \$1,499

Anonymous
Anonymous
IHO Dan and Debby Booker (3)
Charles & Shelly Bossong
IMO Charlotte (25)
Debbie Boughner
IMO Jim Boughner (5)
Ellen Carabin (14)
Ms Nanette Catarinella
IMO Roland Catarinella (65)
Barbara Chait
IHO Van Kaplan (6)
Heather M. Chappars (14)
Mrs. Clare Donahue
IMO Thomas M. Donahue (10)
Mr. and Mrs. Richard Dougherty (9)
Merrill and Theresa Druggs (20)
Carl Dudeck, Jr. (14)
Brian and Tricia Eccher (3)
Theresa B. Fedio (25)
Jeffry & Karen Fink (28)
Galatis Family (3)
Marlene Goldstein
IHO Sharon Goldstein (2)
The Estate of Charlie Gray
IHO the Pittsburgh CLO Staff (35)
Rev. Dr. James R. Gretz (38)
Andrew and Darlene Hasley (3)
Richard and Ruth Ann Hess (57)
Kendra Whitlock Ingram
and Ben Ingram (1)
Jeff Irwin, D.D.S (37)
Mr. and Mrs. Blair Jacobson
Tom and Cathie Johnson
IMO Elizabeth J. Kindelberger (8)
Mary Kellam
IMO Robert C. Milsom (5)
Briana and Jeff Kent (3)
Arthur Kerr (42)
Diana M. Kobus (5)
The J & MA Krolikowski Fund (12)
John and Lisa Lemmex (6)
Michael Leonard (1)
Milan Markovich (2)
John & Cathy Mary (2)
Paul C. McBeth, III (4)
Jacquelin A. McCauley (11)
Dr. & Mrs. Brendan McGuire (6)
Richard and Nancy McKnight (35)
Catherine Mechling (26)
Mrs. Joan Milsom (22)
Jeff & Patty Nayhouse (23)
Mr. & Mrs. Richard L. Neish (13)
Mr. and Mrs. James O'Neill (25)
Todd and M'Lisa Oravitz (4)
Steven and Helen Patricia (16)
Mary Perrone
Rose M. Perryman (22)
Christopher and Mary Rawson (11)
Leslie and Peter Robinson (17)

Iva and Gene Saraceni
IMO our daughter,
Elyse Jeanne Saraceni (14)
Susan Sargent (10)
Gregg Schmidtetter
and Lisa Gavlik (2)
Bob and Lori Shelow (6)
Martin Signore (1)
Jerald and Bonnie Solut (1)
Richard Stewart (5)
The Stoffel Family
IMO Dale Stoffel (10)
Caitlin Stritmatter (1)
Reverend James R. Torquato (13)
Charles and Sue Turner (33)
Michael and Lisa Walsh (22)
Ramona Ward (4)
Mr. and Mrs. Thomas E. Wash (17)
Henry and Rosemarie Wetzel (9)
Mr. and Mrs. Robert W.
Wickerham (34)
Julie Wiles (9)
Patti and Randy Wynkoop (14)

SPONSORS

\$250 - \$499

Anonymous
Anonymous
IMO Mary Helen Fuhrer
and Frank Fuhrer
Dr. & Mrs. Lee Agostini (32)
Charles and Veronica Anchors (13)
Joann S. Anderson (14)
Pamela Andreyko (2)
Nancy Arshoun (5)
Mary and Len Bach (9)
Dr. and Mrs. Ivan Baumwell (11)
George Bielich (7)
Joan Margaret Blasinsky (13)
Michael and Carol Bleier (21)
Robert C. Blough, Jr. (7)
Pamela Bolkovac (11)
Jean-Pierre Bonasso
IMO Stephanie Krick (12)
Michelle and George Bonnar (2)
Dale and Leigh Booker (7)
Kathleen Boykin (33)
Myron and Jeanne Caplan (1)
Kathy Charochak (1)
Tom and Dale Christopher (20)
Cheryl Cline (1)
Mr. Edward E. Clever
IMO Barbara J. Clever (15)
Tom, Liz & Shannen Cloherty (4)
Michele Rone Cooper (19)
Steve Cuden
IMO Leon Zionts (5)
Bob and Judy Cunningham (1)
James and Carolyn
Cunningham (1)
Stacey Daily
IMO John Daily (3)
Alice DeCaria (2)
James and Theresa Doerfler (22)
Steven Doerfler (6)
Jeanne Drennan (3)
John Dreistadt (3)
Jacquelyn Ewalt (1)
Dr. Peggy Farrah
IMO brothers, Sonny
& Bobby Farrah (13)
Craig and Cynthia Flanagan (2)
Margaret Figgins
IMO David F. Figgins (44)
Robert and Helen Fitzgibbon (7)
Mr. Gene S. Forsythe (12)
Mr. and Mrs. Edward
Fortwangler (13)
Katherine and John Freed (14)
John and Elaine Frombach (5)
Ben and Michelle Gallagher (3)
John and Sandy Gandolfi (5)
Alvaro and Sandra
Garcia-Tunon (17)
The Clem Gigiotti Jr. Family (14)
William E Goehring (1)
Tom and Cathy Gothie (19)
Mr. & Mrs. Kurt Gottschalk (19)
David Gotwald & Peter Franzen (2)
Carolyn Grant (1)
Mr. and Mrs. William Greb (10)
Carol Sikov Gross
IMO Rhoda F. Sikov (5)
Robert D. Harrison (6)
Amy and Paul Hoback (9)
Mr. and Mrs. Ben Andrew Huber (4)
Russell W. Johnson
IMO Eileen B. Johnson (3)
Dr. & Mrs. Robert T. Jones, Jr. (35)
Ms. Sherdina Jones (6)
Dr. Chris & Mrs. Emily Kaufmann (5)
Mr. and Mrs. William B. Kent
IMO Peggy Paul (8)
Arthur Kerr (44)
Gary and Betty Kessler (14)
Maria Kovacs (8)
Emily Lambert (3)
Jeff and Teri Lammert (1)
Richard and Victoria Lapishka (1)
Joan E. Lavery
IMO John P. Lavery (24)
Mr. and Mrs. Shawn Leifheit (13)
Mr. and Mrs. Craig C. Linner (2)
David M. and Joyce E. Lipkin (9)
Margery J. Loevner (4)
Jennifer Long (4)
Mary MacPhail
Mr. & Mrs. Robert Madar (21)
Kay Manecke (10)
Richard Marciniak (18)
Dr. and Mrs. James McCann (13)
Mr. and Mrs. Samuel McClure (12)
Dr. Graham and
Elizabeth McIntosh (7)
Dr. Amy Mehta (1)
Mary Ann and Terry Mohr (12)
Carroll and David Morrison (11)
Ms. Bonita Mullaugh (12)
The Murray Family (9)

THANK YOU TO OUR PCLO DONORS

ACT 2 IS MADE POSSIBLE BY YOU!



SPONSORS CONT'D...

Tim and Carol Murray (8)
David & June Nimick (27)
Chris and Diana Patella (1)
David B. Patrick (1)
Ms. Lynley Pavkovich (5)
Warren and Sharlene Purring (11)
Dave and Meg Rauth (3)
Edward and Anna Marie Rice (19)
Mona and Bob Riordan (28)
John and Joni Roland (14)
Kristen Rohr (2)
Caryn Rubinoff
 and Craig Dunham (1)
Don & Mary Rugh (24)
Mrs. John M. Sadler (11)
Paul Schamer (10)
Mary Seghi (25)
Cecilia Shepard IMO Robert Greer
Ronald and Linda Siegel (3)
Josh and Patricia Sivitz (2)
Ann K. Shaner (5)
Ira and Lucy Snyder
 IMO Allan Snyder (7)
Susanne and Ron Sommer (12)
Mr. & Mrs. Marlis Stacy (9)
Mr. and Mrs. David R. Steinberg (24)
Jody Stockdill (2)
Cait and Spencer Sturgeon (3)
Robert and Vonnice Teagarden (5)
Kevin and Cathy Thomas
 IMO Joe DiVito (1)
Gayle Tissue
 and Yiannis Kaloyeropoulos (2)
Stephanie Veenis (2)
Nancy and Will Willems (12)
Al and Peg Williams (3)
Janice Wirth (15)
Gary and Diane Workman (7)
Tom Wyse, Jr. and Robert A. Neft (27)

LIMELIGHTERS

\$100 - \$249

Anonymous
Anonymous
 IMO Agatha
Anonymous
 IMO Richard S. Mowl Jr.
A. L. Abramovitz (9)
Kathryn Adams
 IMO Forbes Adams (2)
John Aiello (7)
Kelly J. Albenze (1)
Dorcas Alexander
 IMO Robert Alexander (1)
Ted and Donna Alexovich (7)
Elizabeth R. Amber
 IMO Wayne Amber
 & James Emswiler, CAS (11)
Mr. and Mrs. Anderson (1)
Sam Angelucci
 and Catherine Blandi (1)
Sandy Artzberger (4)
George W. Ayres
 IMO Joyce Davis Smith (6)
Debra Baldesberger (9)

Leroy and Ginger Ball (4)
Colleen Balsano (1)
Laura Barry
 IMO The Awesome CLO Staff (10)
Dave and Trish Bartlett (1)
Mr. Gerald Bartolomucci (5)
Diane Berquist
 IMO Michael J. Berquist, Esq. (5)
Kirk F Betteridge (1)
Jody Bishop (1)
Mr. David Blackmore (20)
Paul E. Block (23)
Michael Blow (1)
Cesare and Anita Shaw Brogneri
 IMO Our Parents (1)
Jim Bobenage (1)
Sharon Bono (1)
Fran and Harvey Borovetz (1)
Michael and Maxine Botti
 IMO Mike Botti (7)
Dorothy L Boyer (1)
Scott Branvold
 and Lynda Davidson (12)
David and Karen Brienza (6)
Elizabeth Brokaw (1)
Emily Brooks (1)
The Brown Family (4)
Mary Ann Brown (2)
Mary Patricia Brown (16)
Mr. and Mrs. Steve Brown (3)
Mr. and Mrs. Edward E. Brunins (9)
Mr. Russ Carley (1)
Dan and Doreen Casey (9)
Helen Cestra (1)
Chris Chaney (1)
Vanessa Chapman (2)
Frank and Theresa Cicci (3)
Gary and Jo Ann Claus (31)
Nat and Diane Cohen
 IMO Jim Mercer (19)
Erin Cook (1)
Ruth and Carl Crowe (2)
Fred and Joy Cullen (10)
Catherine M. Daily
 IMO Hazel P. Daily (29)
George and Kathleen Daniels (7)
Steve Daquilanto (2)
Michael Davidow (1)
Dr. and Mrs. Tim DeBiase (12)
Laura DeDi (1)
Michele DeGrazia (1)
Diane Deluca (2)
Peter and Melba Dibble (4)
Nick and Michele Ditullio (8)
Beth Ann Docherty
 IMO Janet M. Docherty (11)
Mr. Paul S. Drost (22)
Scott J. Donaldson
 & Michael Hunter (12)
Mr. and Mrs. Patrick Dunphy (27)
Mary Jane Edwards (9)
Timothy Eicher (1)
Gerald and Dawn Ellson (4)
Jenna Marie Enright Taylor (1)
Mike & Margie Evans (9)
Frank and Lisa Falcione (3)
Debbly Fannin (1)
Mark and Carolyn Farabaugh (11)
George Farah (1)
Mr. Frederick Faraone (1)
Jacqueline Fennell (3)
Bob and Amy Ference
 IMO Marie Ference (4)
Armand Ferrara (4)
Emily Ferri
 IMO Edward and Carole Ferri (9)
Cheryl Ferri (2)
Kristian Feterik (3)
Mr. and Mrs. Robert Fiedler (12)
Tom and Sue Finegan (7)
Sarah Finney (3)
Jim and Paula Fiorucci
 IMO Carol Fiorucci (17)
Bruce Fisher (1)
5 Js (16)
Peggy Forquer
 IMO Betty Forquer (1)
Suzanne Fountain (1)
Mr. & Mrs. Paul K. Fox (31)
Kenneth T. Frankenbery (11)
John and Susan Frantz (2)
H. Ronald & Cynthia Fray (12)
Friedlander Family (12)
Linda Froehlich
 IMO Richard D. Froehlich (4)
Michael D. Gaber (2)
Thomas Garnett (1)
Shirley Gaudette (2)
Bernard T. Geiser (1)
Damian and Hayah George (10)
Linda J. Haynes, MD (11)
Mr. and Mrs. William D. Ghrist III (21)
Rachel Gilman & Tina Cutone
 IMO Abigail Gilman (4)
Angella Goetz (10)
Lisa Ann Goldsmith (1)
Stephen Graf (6)
Cyndy Graves (11)
Joann and Anthony Grieco (18)
Eddie Grimes
 IMO Greg Triko (8)
Marjorie C. Gross (3)
Mark M. Gudalis (5)
Brandon Guzy (1)
Mr. Robert Haddox (1)
Dave and Beth Haines (1)
Denise Hampson (4)
Mr. and Mrs. Thomas R. Harley (4)
Niki Harris and Zane Weiner (8)
Donna Hazel (3)
Ms. Paula Heil (6)
Michael and Diane Hillebrand (1)
Janice L. Hixson (7)
Lois M. Hoffman
 IMO Mr. and Mrs. Edward
 Hoffman (21)
Iris Holleran (1)
Daniel and Vicki Holthaus (11)
Melissa Hook (8)
Larry and Denise Hoover (14)



THANK YOU TO OUR PCLO DONORS

ACT 2 IS MADE POSSIBLE BY YOU!

Mr. Bruce Hostler (15)
Millie Hutchison (2)
Michael Iannone (1)
Diane Johnson (10)
Dr. and Mrs. Ralph E. Jones (6)
Ron and Eileen Jones (1)
William Jones (1)
Elaine Kaczmarek
 IMO orothy Procupp
 and Joanne Readshaw (21)
Jim and Cheryl Kassner (4)
Kelly and Walter Keller (2)
Patsy & PK Kennedy (4)
Roy and Lori Kern (4)
Russell Kern (1)
Mr. and Mrs. Kevin Killinger (6)
James and Nita Kincaid (1)
MaryAnn & Bill King (25)
Debra and Jack King (14)
James R. Kirsch
 IMO Audrey K. Kirsch (14)
Mr. Dennis Knapp (1)
Diane Knechtel (21)
Bruce Knepper (1)
Dr. Stephanie Kobil (28)
Lou M. Kramer, Jr.
 IMO Louis Kramer, Sr. (11)
Shawn and Judith Kramer (6)
Mac and Eileen Kravitz (17)
The Kubany Family (1)
Margaret and Dan Lackey (6)
Joan Lacomis (4)
Nancyann Letterio (6)
Neil and Sharon LeJeune (11)
Darren and Linda Leonard (16)
Dirk M. Lesnett (2)
Leslie and Rich Levine (5)
Jonathan Levinson (1)
Jeff and Rachel Lizik (8)
Kate Loy (4)
Jeff and Dr. Jae Luck (4)
Ronald and Christine Lunardi (24)
Robert Luttner (2)
Carole Malik (3)
Mr. & Mrs. Gregory D. Maloney (30)
Janet K. Manuel (17)
Rudy & Rose Marshalek (1)
Jim and Maribeth Masquelier (1)
David Maxwell (36)
Larry and Michaelene McCahan (32)
Mrs. Neva McClymonds
 IMO John McClymonds (9)
Amanda McCoy (1)
Mark and Patricia McGinley (7)
Paul and Melissa McLane (6)
Mr. and Mrs. Daniel Meier
 and Family (7)
Christine Matelan (1)
Bob and Chris Meyer (9)
Robert and Lynn Mialki (7)
Joseph and Gina Milcoff (5)
Robert and Amber Miles (6)
Justin J. Mohny (3)
Dr. and Mrs. James D. Moore (15)
Jeff and Crystal Moore (1)

Lee Morehouse (4)
Jim and Deborah Muders
 IMO Tony Wieckowski (17)
Wendy Murdock (1)
Jennifer Murr (1)
Richard Narvin
 IMO My Bunny (3)
William Naylor
 IMO Mary D. Naylor (2)
Marisa Nero (1)
William Noel (3)
Dan and Lisa Nydick (17)
Alice Oakes (5)
Michael J. O'Brien (3)
James Ohr (2)
Thomas M. Pakula (2)
Pascal Family (1)
Jo-Ann Paulenda (7)
Kathy & John Pechunka (15)
Richard and Deborah Peltier (1)
Vincent Petrocelli
 IMO Carole L. Petrocelli (18)
Mark F. Piedmonte (5)
Mr. and Mrs. Stephen F.
 Piskurich (26)
Mr. & Mrs. Donald J. Platt (27)
Cindy & John Pokora
 IMO Lil Sciuilli (12)
Kathy Jo Pollack (20)
Kenneth Powell (1)
Barry B. Premoshis (23)
Barbara Provenzano (20)
Jim and Maura Puchany (4)
Quality Repair Services, LLC (10)
Sue Quinn (4)
Pamela Rakosky (1)
Joshua and Brielle Reicks (5)
Edward M. Reppa, Jr. (17)
Mr. & Mrs. Frank Ricco Jr. (13)
Melinda Rietzel (2)
David and Sylvie Rigdon (7)
Denise & Rusty Roach (2)
Gary and Cookie Roberson (2)
Marcy Robertson (2)
Dante Romito (1)
Al Rose
 IMO Diane Rose (17)
Rosella Rosener (14)
Wendy Ruch (1)
Sally and Edmund Ruffin (1)
Kathy Ruffing (1)
Ms. Kathleen Sacco
 & Mr. Andrew Greiner (2)
Frank and Denise Salopek (8)
Lisa Scales (2)
Dianne Scansaroli (9)
Mark Scappe (6)
Mr. Jim Schepis (1)
Mr. and Mrs. Daniel C. Schetley (11)
John C. Schlotterer (8)
Edward R. Schneider (4)
Carl W. Schultz (6)
Emily Busse Schwartz
 IMO John and Maggie Busse (2)
Jim and Sheree Sciarretta (5)

Victoria and David Serafini (19)
Brian Sergi-Curfman (2)
Steve and Linda Sesack (2)
Madalaine T. Shigle
 IMO Therese "Grammy"
 Sciulli (5)
Vincent J. Siciliano
 IMO John A. Siciliano (39)
Teresa Sirianni (1)
Jacob and Rula Skezas (10)
Walter and Gayle Sklarsky
 IMO Clara Sklarsky
 and Sandra Cessna (16)
Bob and Chris Sloboda (8)
Joseph and Lynn Smith (10)
Ruth Snyder (2)
Tom and Karen Sochacki (2)
Lyn Sokol (1)
Steve Sokol (1)
Susan Sorbo (12)
Jocelyn Steele (2)
Carol M. Stein (18)
Mr. & Mrs. Gregory A. Stein (35)
Joe Stevens (9)
Jenny and Kelly Stewart (7)
Troy and Julie Stiffler (2)
Debra Stiger (6)
Mr. and Mrs. George S. Stipetich (3)
Mr. J. Stofcik (1)
Dennis and Allison Stombaugh (6)
Christine and Ronald Stout (1)
Wade and Barbara Stull (6)
Jayelyn Swink (3)
Janet L. Templer
 IMO Carol R. McAuley (24)
Taylor Toth (1)
Charles F. Traeger
 & Rita Powroznik-Traeger (9)
Nancy and Gary Tuckfelt
 IMO Jay and Renee Minsky (6)
Penny Tzortzis (3)
Keith and Carol Unidas (3)
James and Dorothy Valimont (12)
Jane A. Vaselenak (4)
Matt and Dr. Anne Veres (5)
Kathleen M. and Emil P. Varnise (1)
Marilyn and Joseph Vettorazzi (9)
Janet Wagner (1)
William and Susan Wagner (1)
Dan and Lee Ann Wahl (4)
Jason Waltz (1)
Justin Weissert (1)
Jane Werner and Bob Rutkowski (1)
Karen and Fred Wheeler Jr. (3)
Michael and Shelby Wherry (6)
Dick and Margaret White (17)
Peggy C. Whitehurst (8)
Mr. David E. Winklmann (8)
Brandon Wolfe (1)
Carol Worstell
 IMO Mildred Worstell (2)
Linda Wright (16)
Lawrence Yagoda (1)
Sam Yates (1)
Joseph Yuhasz (4)

THANK YOU TO OUR PCLO DONORS

ACT 2 IS MADE POSSIBLE BY YOU!



Susan J. Zuk (8)
Dr. Paulina F. Zunino (5)
Susan Stanish Zurawsky (4)
Ms. Linda Zyrroll (1)

Pittsburgh CLO thanks the Ambassadors and Wine Tasting & Silent Auction Donors for their generous support of the CLO Performance Season and CLO's Arts, Education, and Community Engagement Initiatives.

To update your preferred donor listing, please contact the CLO Development Office at 412-281-3973, ext. 4.

PITTSBURGH CLO WOULD LIKE TO THANK AND RECOGNIZE THE FOLLOWING MEMBERS OF THE LEGACY LEGENDS SOCIETY:

Paul Block
Jim Gretz
Robert C. McCartney
Paul and Paula Palmer
Jeffrey Lawrence Pollock, Esq.
Sally Wade
Reverend Thomas A. Wagner

For more information on the Legacy Legends Planning Giving Program, please visit our website at PittsburghCLO.org



Pittsburgh
CLO

CELEBRATING MUSICAL THEATER

LEGACY LEGENDS

CLO LEGACY LEGENDS recognizes the dedicated supporters who share a vision for Pittsburgh CLO's future. Their bequests and other planned gifts will have a profound and lasting impact on the artistic quality of the work you see on our stages.

If you would like to join us in building that future, please consider becoming a **CLO LEGACY LEGEND** by naming Pittsburgh CLO as a beneficiary of your will or trust, IRA or other retirement plan, life insurance policy, life income, or other planned gift. Designating Pittsburgh CLO is not a complicated process and can often be done with a phone call to your investment adviser.

If you have already named CLO in your estate plans – let us know and we will add your name to our CLO LEGACY LEGENDS and include you in special recognition and benefits. **For more information, please contact Wynne Fedele, Director of Development at wfedele@pittsburghCLO.org or call 412-281-3973 x232.**



YOUR LEADING ROLE AWAITS!

*Did you know that a ticket only covers half
of the expenses of a PCLO production?*

**Join our vibrant donor community and help us keep
the curtain rising!**

- **\$100 GIFT** – Gain priority access to readings of new musicals and recognition in PCLO show playbills.
- **\$250 GIFT** – Go behind-the-scenes with an invitation for two to attend a reception and dress rehearsal of a PCLO show and enjoy two drink vouchers for the Benedum Center bars.
- **\$1,500 GIFT** (and above) – We cordially invite you to join our fabulous **Gene Kelly Producer's Society**, gaining access to thrilling opportunities to meet, mingle, and dine with stars and befriend fellow musical theater lovers! Furthermore, enjoy premier benefits such as year-round access to PCLO's concierge department for all your ticket exchanges and purchases; free reserved parking during PCLO shows; complimentary tickets; and more.

*Charles Shaughnessy, star of PETER PAN
and A MUSICAL CHRISTMAS CAROL,
with donors at Supper with the Stars*



Donors at Dress Rehearsal Reception

**FOR MORE INFORMATION ABOUT DONOR BENEFITS AND
WAYS TO GIVE, VISIT PITTSBURGHCLLO.ORG OR CALL OUR
DEVELOPMENT OFFICE AT 412-281-3973 EXT. 4**



**JOIN
OUR DONOR
FAMILY TODAY!**

The tax deductible amount of your contribution is limited by the excess of your contribution over the value of certain benefits provided by CLO. For more information, visit pittsburghCLO.org. A copy of the official registration and financial information may be obtained from the Pennsylvania Department of State by calling toll free, within Pennsylvania, 1-800-732-0999. Registration does not imply endorsement.



SPECIAL THANKS

The Pittsburgh CLO Gallery of Heroes in-school program is sponsored by Highmark Blue Cross Blue Shield, The Massey Charitable Trust, The Pittsburgh Foundation, Peoples Natural Gas, The City of Pittsburgh, Heinz Endowments, PNC, Healthcare Realty, Cooper-Siegel Family Foundation, and Laurel Foundation.

The Gene Kelly Awards are sponsored by The Michael J. Kara Family, Deloitte, the Gismondi Family Foundation, Highmark Blue Cross Blue Shield, PNC, and the CLO Ambassadors.

The Charles Gray Award for Special Achievement in Arts Education is underwritten by the Roy A. Hunt Foundation.

The CLO New Horizons is made possible in part by Highmark Blue Cross Blue Shield, The Pittsburgh Foundation, Bellin/Coontz Family Giving Fund, Bender Consulting Services, Cooper-Siegel Family Foundation, and the Edith L. Trees Charitable Trust, People Natural Gas, PNC.

Stars of Pittsburgh CLO's Summer Series dine at the Grand Concourse Restaurant at Station Square.

The Official Hotel of Pittsburgh CLO.



The Official Airline of Pittsburgh CLO.



The Official Car Provider of Pittsburgh CLO.



EQT New Musicals Commissioning Fund

The purpose of the EQT New Musicals Commissioning Fund is to identify and commission writers both in Pittsburgh and across the country to write new musicals for the Pittsburgh CLO Summer Season, Cabaret and Gallery of Heroes program.

NOW THROUGH AUGUST 31ST!



SUMMER

STAYCATION

FREE ADMISSION

WITH ALLEGHENY COUNTY LIBRARY CARD & RESERVATION

RADPASS.ORG

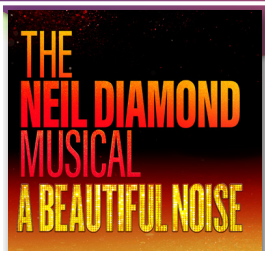
**SEE OFFERS FROM SOME OF PITTSBURGH'S
FAVORITE ATTRACTIONS AND BOOK YOUR
STAYCATION PASS WITH THIS QR CODE:**



PITTSBURGH CULTURAL TRUST

PNC 2025-2026
BROADWAY  PITTSBURGH™

PRESENTS



September 9-14, 2025



November 4-9, 2025



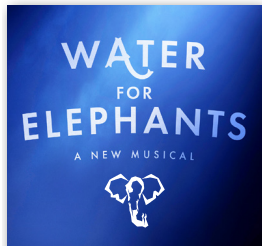
December 30-January 4, 2026



January 14-February 15, 2026



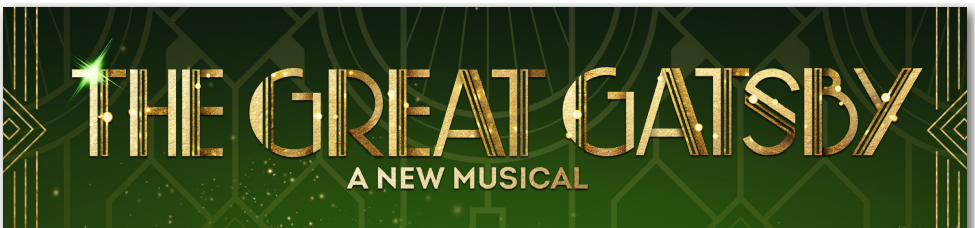
February 24-March 1, 2026



March 31-April 5, 2026



April 14-19, 2026



May 26-31, 2026

SEASON OPTION



October 7-12, 2025

SEASON OPTION



November 25-30, 2025

SEASON OPTION



March 10-15, 2026

Benedum Center • Season Tickets 412-456-1390 • Groups 10+ Tickets 412-471-6930

TRUSTARTS.ORG/BROADWAY





Elevate Every Event

PREMIER CATERING SERVICES

If your event needs exceptional food and flawless service, it needs Common Plea Catering. From weddings and birthdays to corporate gatherings and daily lunches, we bring chef-crafted cuisine, polished execution, and 40+ years of expertise to every celebration.

NEED CATERING SERVICES?

We bring uncommonly good food to Pittsburgh's most uncommon places.

CONTACT US TODAY!

412-281-5140

info@thecommonplea.com

www.thecommonplea.com

We specialize In

- From daily drop-offs and corporate events to full-scale galas, weddings, birthdays and more. Our team brings culinary artistry and precision planning to every event. With decades of experience, flexible menu options, and a dedication to excellence, we're here to make your event unforgettable.
 - Daily Corporate Meal Plans
 - Weddings
 - Holiday Parties
 - Social Events
 - Fundraisers & Galas
 - Conference Catering



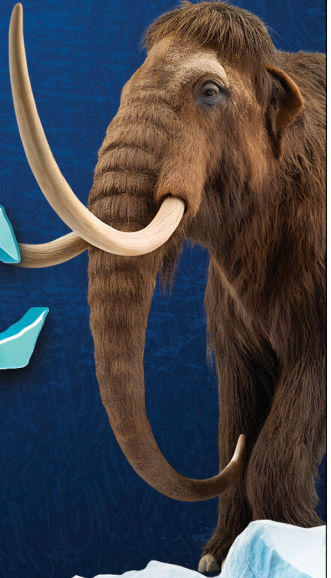
NOW THROUGH SEPTEMBER 1

ICE AGE

FROZEN IN TIME



PITTSBURGH ZOO
& AQUARIUM




giant eagle

foundation



***Proud to support the
Pittsburgh CLO!***





Gallagher

Insurance | Risk Management | Consulting

2025/26 **SEASON 39**
FRIENDS & FAMILY
SINGLE
TICKETS
TO ALL SHOWS
ON SALE NOW!



Manchester Craftsmen's Guild
1815 Metropolitan Street
Pittsburgh, PA 15233

INCLUDING...



New York Voices Farewell Tour
Featuring Paquito D'Rivera



Endea Owens and Michael Mayo
*A double bill of two immensely
talented rising stars of jazz!*



2025/26
Artist-In-Residence,
Tamara Tunie

**+MANY
MORE
ARTISTS**



mcgjazz.org
412.322.0800
**< IT'S ALL
HAPPENING HERE!**

The engagement of our distinguished Lead Actress, Cate Hayman, for *Disney's FROZEN*, in the role of Elsa is underwritten through the generous support of

Joe and Kathy Guyaux



NEXT GENERATION

CAMPAIGN

Chocolate Boutique

Gourmet Chocolates & Novelty Candy

is a proud Sponsor of Pittsburgh CLO's 2025
PNC Summer of Musicals!



VISIT US AT ONE OF OUR MANY LOCATIONS!

Robinson Mall • South Hills Village Mall • Eastwood Mall • Sewickley, PA Store Front

KDKA

**MORNING
NEWS**



WEEKDAYS STARTING AT **4:30**

KDKA

**© CBS NEWS
PITTSBURGH**



The Director and Choreographer are members of the Stage Directors and Choreographers Society, a national theatrical labor union.



United Scenic Artists represents the designers and scenic painters for the American Theatre.



Backstage and Front of the House Employees are represented by the International Alliance of Theatrical Stage Employees (or I.A.T.S.E.).



The actors and stage managers employed in this production are members of Actors' Equity Association, the union of professional actors and stage managers in the United States.

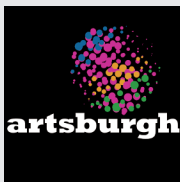


The Musicians, Conductors, Music Preparation Personnel and Librarians employed in this production are members of the American Federation of Musicians of the United States and Canada.

Pittsburgh CLO receives state arts funding support through a grant from the Pennsylvania Council on the Arts, a state agency funded by the Commonwealth of Pennsylvania and the National Endowment for the Arts, a federal agency.



The Allegheny Regional Asset District, a county agency created to support and finance regional assets, including libraries, parks, cultural groups, sports and civic facilities, and to distribute tax relief to the 128 municipalities of Allegheny County.



Pittsburgh CLO AMBASSADORS



BECOME A PITTSBURGH CLO AMBASSADOR TODAY!

The mission of the Pittsburgh CLO Ambassadors is to support and broaden the reach and diversity of the Pittsburgh CLO and to make musical theatre an active and accessible part of the lives of its members and others through the organization of and participation in a combination of theatrical, social, fundraising, volunteer, and educational events.



pittsburghCLO.org/Ambassadors



Pittsburgh
CLO

Academy of Musical Theater



LET YOUR TALENT TAKE FLIGHT!

MUSICAL THEATER - DANCE - ACTING
VOICE - PRIVATE LESSONS



REGISTRATION
NOW OPEN!

PITTSBURGH CLO  412-281-2234

CLASSES AVAILABLE FOR AGES 3 - ADULT





PITTSBURGH CLO STAFF

Mark Fleischer, *Executive Producer*

SALES & MARKETING

Sharon Goldstein.....*Director of Sales and Marketing*
 Greta Agee.....*Graphic and Social Media Coordinator*
 Sidney Franczak.....*Marketing Manager*
 Kyle J. Malinosky.....*Marketing Coordinator*
 Alexa Yanyanin.....*Ticketing and Communications Manager*

Special thanks to the Pittsburgh Cultural Trust Ticketing, Group Sales, and Patron Services teams for their invaluable support and collaboration.

DEVELOPMENT

Wynne Fedele.....*Director of Development*
 Molly Campe.....*Manager of Special Events and Projects*
 Brandon Marzke.....*Manager of Individual Giving*
 Tom McGee.....*Corporate and Foundation Relations Manager*
 Dayna Sowers.....*Board Liaison/Development Coordinator*
 Levi Von Iderstein.....*Development Data Coordinator*
 Sia Zhang.....*Development Associate*

FINANCE & ADMINISTRATION

Angela Langill.....*Director of Finance and Administration*
 Michael J. Cerchiaro.....*General Manager*
 Shelby Hinkle.....*Human Resources Consultant*
 Kuei-O Lin.....*Accountant*
 Makenzie Shimko.....*Accounting & HR Coordinator*
 Angie Staats.....*Seasonal Company Manager*
 Tom Stumme.....*Executive Assistant*
 Amanda Wilcox.....*Controller*

EDUCATION

Jim Scriven.....*Director of Education*
 Patty Maloney.....*Academy Principal*
 Brady D. Patsy.....*Community Engagement Manager*
 Aidan Quartana.....*Education Associate*
 Alexander Righetti.....*Education Operations Coordinator*

PRODUCTION/CONSTRUCTION CENTER

Billy Mason.....*Associate Producer*
 Macarena Subiabre.....*Production Manager*
 Anna Hanson.....*Producing Assistant*
 Michele Sullivan.....*Construction Center Business Manager*
 BJ Lipari.....*Scenic Charge*
 Brendan Smith.....*Foreman*
 Matthew Abate.....*Welder*
 Martin Bannias.....*Journeyman*
 Michael Bannias.....*Key Carpenter*
 Fredrich Drenkow.....*Key Carpenter*
 Ryan Geraghty.....*Key Carpenter*
 Peter Hartley.....*Electrician*
 Anna-Lena Kempen.....*Scenic Painter*
 Rylie McCracken.....*Props*
 Robert Pell.....*Journeyman*
 Randy Schanz.....*Journeyman*

DISNEY'S FROZEN PRODUCTION

Kristen Anderson-Lopez.....*Music and Lyrics*
 Lance T. Barker.....*Assistant Dance Captain*
 Joshua "Hoss" Beumer.....*Assistant Head Electrician*
 Dylan A. Blussick.....*Wardrobe Supervisor*
 Catie Brown.....*Music Director, Conductor*
 Jim Burns.....*Rehearsal Pianist*

Kaitlyn Clougherty.....*Youth Performer Supervisor*
 Tomé Cousin.....*Intimacy Coordinator*
 Bryce Cutler.....*Video Designer*
 Jeff Edkins.....*Assistant Audio/A2*
 Noah Glaister.....*Scenic Consultant*
 Lisa Ann Goldsmith.....*Dialect Coach*
 Carly Haig*.....*Dance Captain*
 Kelly Haywood*.....*Assistant Stage Manager*
 Michael Heitzman.....*Director*
 Kevin Hogan.....*Head Electrician*
 George Hoydich.....*Orchestra Contractor*
 Natalie Hratko*.....*Assistant Stage Manager*
 Travis Klingler.....*Hair and Makeup Supervisor*
 Jeff A. Knaggs.....*Hair and Makeup Designer*
 Adam Koch.....*Additional Scenic Elements*
 Andrew Kutrufris.....*Head Carpenter*
 Jennifer Lee.....*Book*
 Josh Liebert.....*Original Sound Designer*
 Robert Lopez.....*Music and Lyrics*
 Tim Mackabee.....*Scenic Designer*
 Alex Manalo.....*Intimacy Coordination Facilitator*
 Paul Miller.....*Lighting Designer*
 Scott Molampy, Geppetto Studio, Inc.....*Puppets*
 Ryan J. Moller.....*Costume Designer, Costume Coordinator*
 Angie Monahan.....*Stage Management Production Assistant*
 Zach Moore.....*Head Audio Engineer*
 Robert Neumeyer.....*Music Supervisor, Music Arranger,
 Music Orchestrator*
 Caroline Nowak.....*Hemsley Lighting Assistant*
 Taylor Oberle.....*Head Props, Props Coordinator*
 Renée Rimland*.....*Production Stage Manager*
 Robbie Roby.....*Choreographer*
 Camille Villalpando Rolla.....*Rehearsal Pianist*
 Ceili Schiller.....*Stage Management Production Assistant*
 Evan Shoaf.....*Assistant Head Carpenter*
 Alexander Shumann.....*Video Programmer*
 Brendan Smith.....*Shop Foreman*
 Sarah Speck.....*Sound Designer*
 Jacob Zedek.....*Associate Lighting Designer*

PITTSBURGH CLO 2025 SUMMER INTERNS

Elizabeth Amen.....*Producing*
 Skyler Bruno.....*Education*
 Kylie Capsambelis.....*Company Management*
 Stella Frazer.....*Graphic Design*
 Danielle Guthrie.....*Sales & Marketing*
 Elana Kaplan.....*Production Management*
 Katerina Larrick.....*Education*
 Rachel Laurence.....*Sound Design*
 Kaitlyn Majewski.....*Education*
 Helena Marshall.....*Construction Center*
 Rachel Olson.....*Props*
 Grace Schmader.....*Education*
 Julia Shavel.....*Merchandise & Lobby*
 Trey Tillotson.....*Development*
 Jackson Underwood.....*Costume Design*
 Emily Wickham.....*Theater Management*

 **Pittsburgh CLO** TO ADVERTISE IN PROGRAM BOOKS:
 412-471-1497 | advertising@culturaldistrict.org

*Members of Actors' Equity Association, the union of professional actors and stage managers in the United States.

American Airlines 

Breeze 



**Daily, nonstop flights from the
Steel City to Tinseltown**

Explore the endless entertainment options of Los Angeles
with a nonstop flight from PIT.

Learn more at flypittsburgh.com/booknow

