



Pittsburgh
CLO
Academy of Musical Theater

Stephen Schwartz's
PIPPIN

#PCLOAPippin | @CLOacademy



FALL INTO HOLIDAYS

KARA CABARET SERIES
HONORING MICHAEL & DOLORES KARA

RICHARD O'BRIEN'S
THE ROCKY HORROR SHOW

Oct 14-Nov 8
Greer Cabaret Theater

KARA CABARET SERIES
HONORING MICHAEL & DOLORES KARA

YIPPEE KI YAY
THE PARODY CELEBRATION OF DIE HARD

Dec 2-21
Greer Cabaret Theater

A MUSICAL CHRISTMAS CAROL

Dec 13-23
Byham Theater

Sponsored by
KeyBank



PITTSBURGH CLO.ORG 412-456-6666
Groups 10+ Save! Call 412-471-6930



Dear Parents & Friends,

Welcome to CAPA Theater for this special Pittsburgh CLO Academy's production of *PIPPIN*. This marks the Academy's 13th annual fall production – an exciting milestone for our students, faculty, and families.

At the Pittsburgh CLO Academy, students receive exceptional training, invaluable performance opportunities, and life skills such as discipline, confidence, and creativity. Whether they pursue careers on stage, behind the scenes, or in other professions, these experiences serve them well. Our alumni have gone on to excel in theater, education, medicine and beyond.

This production showcases 26 students both on stage and behind-the-scenes guided by our exceptional faculty. Each year, more than 800 Academy students train with working professionals and educators from Pittsburgh CAPA, Carnegie Mellon University, Duquesne University, and Point Park University. Their commitment makes productions like this possible and worthy of applause.

Though *PIPPIN* runs for a limited time, you can see our Academy students in upcoming Pittsburgh CLO productions, performing alongside professional artists. Many also continue their training in our summer camps. As a celebration of their hard work, every *PIPPIN* participant will receive one ticket to Pittsburgh CLO's production of *A MUSICAL CHRISTMAS CAROL* at the Byham Theater between December 13 – 23.

Thank you for supporting these talented young performers. Your support helps us expand these invaluable programs and provide even more opportunities for young artists to grow.

Enjoy the show!


Mark Fleischer
Executive Producer

PLAYBILL

Pippin

Presented by Pittsburgh CLO Academy

**Congratulations to
Kaitlin Howe and
the Entire Cast and Crew**



CURBELL
PLASTICS

250 West Kensing Drive, Ste 100
Cranberry Township, PA 16066
Tel. 724-772-6800 | curbellplastics.com

OCTOBER 4, 2025

 Pittsburgh
CLO
Academy of Musical Theater

Presents

Stephen Schwartz's PIPPIN

BOOK BY **ROGER O. HIRSON** MUSIC & LYRICS BY **STEPHEN SCHWARTZ**

Originally produced on the Broadway stage by **STUART OSTROW**
Originally directed on the Broadway stage by **BOB FOSSE**
2013 Broadway revival directed by **DIANE PAULUS**
Theo Ending Originally Conceived In 1998 by **MITCH SEBASTIAN**

FEATURING

**LUNA B. BAKER • RAVEN BANDY • ADALYN BURGOYNE • SIALIA CHAMBERS
WILL CHAMBERS • DYLAN CONWAY • EVELYN CRYOR • AILA DANN • KAITLIN HOWE
SYDNEY HRINDA • JULIA KILLMEYER • PAISLIE KLEIN-MERLIN • MARIANA MANGUAL
EAMONN MCELFRISH • HELENA MERCOLINI • LUCY MYERS • AVERY SCHNEIDER • ELIZA STERBAL
SIDDALY SYKES • CYMA TABBARA • HENRY THOMAS • AFTYN TOMACESKI • CARIS TOMACESKI**

SCENIC DESIGNER **BJ LIPARI** LIGHTING DESIGNER **ELIZABETH AMSTUTZ** COSTUME DESIGNER **MICHELLE NOWAKOWSKI**

SOUND DESIGNER **MARK EYER** PRODUCTION STAGE MANAGER **MADDY KOROPCHAK**

MUSIC DIRECTOR
SKYLAR BUNK

CHOREOGRAPHER
EMILY STOKEN BONDI

DIRECTOR
MICHAEL E. MCKELVEY

PIPPIN

is presented by arrangement with Music Theatre International (MTI).
All authorized performance materials are also supplied by MTI
www.mtishows.com

THE VIDEOTAPING OR MAKING OF ELECTRONIC OR OTHER AUDIO AND/OR VISUAL RECORDINGS OF THIS PRODUCTION OR DISTRIBUTING RECORDINGS ON ANY MEDIUM, INCLUDING THE INTERNET, IS STRICTLY PROHIBITED, A VIOLATION OF THE AUTHOR'S RIGHTS AND ACTIONABLE UNDER UNITED STATES COPYRIGHT LAW.

Pittsburgh CLO is a founding member of the National Alliance for Musical Theatre,
Independent Presenters Network and The Broadway League.

HIGHER *Voice* STUDIO

ecstatically congratulates...

Raven Bandy
Dylan Conway
Paislie Klein-Merlin
Mariana Mangual
Eamonn McElfresh
Eliza Sterbal
Caris Tomaceski

...and the entire cast and crew of *Pippin!*

OFFERING

Voice Lessons
Piano Lessons
Classical/ Musical Theater/ Pop/ Rock/ Country/ Jazz
Italian, French, German & English Diction
Accompaniment & Recording Services
Audition Preparation
Acting & Performance Coaching
Sight Singing, Ear Training & Music Theory
Masterclasses & Workshops
Open Mic Nights & Recitals
Local, Regional, National & International Competitions

412-429-1000
www.highervoicestudio.com
144 East Main Street | Carnegie, PA 15106



Dear Family and Friends,

Welcome! I am thrilled to have you “*join us*” for the Pittsburgh CLO Academy performance of *PIPPIN* at the CAPA Theater.


At a time when our teen students are discovering who they are and who they want to become, this classic coming-of-age story gives them the chance to explore their own “*Corner of the Sky*.” Since its Broadway debut in 1972 under the visionary direction of Bob Fosse, *PIPPIN* has captivated young audiences. Fittingly, the very first version of this show was a student production created on the campus of Carnegie Mellon University by then student, Stephen Schwartz. With this performance, our PCLO Academy students carry forward that legacy, proving they are “*On the Right Track*.”

I would be remiss to not recognize the hard work and dedicated team that made this remarkable production possible. I would like to extend a special thank you to the entire Pittsburgh CLO family. This production would not have come to life without our Education Department and Creative Team, especially Michael McKelvey, Emily Stoken-Bondi, Skylar Bunk, and Maddy Koropchak for sharing their expertise and passion for the arts. Under their leadership, this cast has put together a show in “*No Time at All*.”

Finally, my deepest gratitude goes to our Pittsburgh CLO Academy families and friends. Your generosity, encouragement, and commitment of time, make it possible for these young artists to thrive. Thank you for supporting their journey toward excellence in musical theater.

Now without further ado, we've got “*Magic to Do*”..

Enjoy *PIPPIN!*


Jim Scriven
Director of Education



PIPPIN CAST

LEADING PLAYERS

Leading Player.....Mariana Mangual
 Pippin.....Eamonn McElfresh
 Charles - "His Father".....Kaitlin Howe
 Lewis - "His Half-Brother".....Dylan Conway
 Fastrada - "Lewis' Mother".....Adalyn Burgoyne
 Berthe - "Pippin's Grandmother".....Lucy Myers
 Catherine - "A Widow".....Siddaly Sykes
 Theo - "Her Son".....Avery Schneider

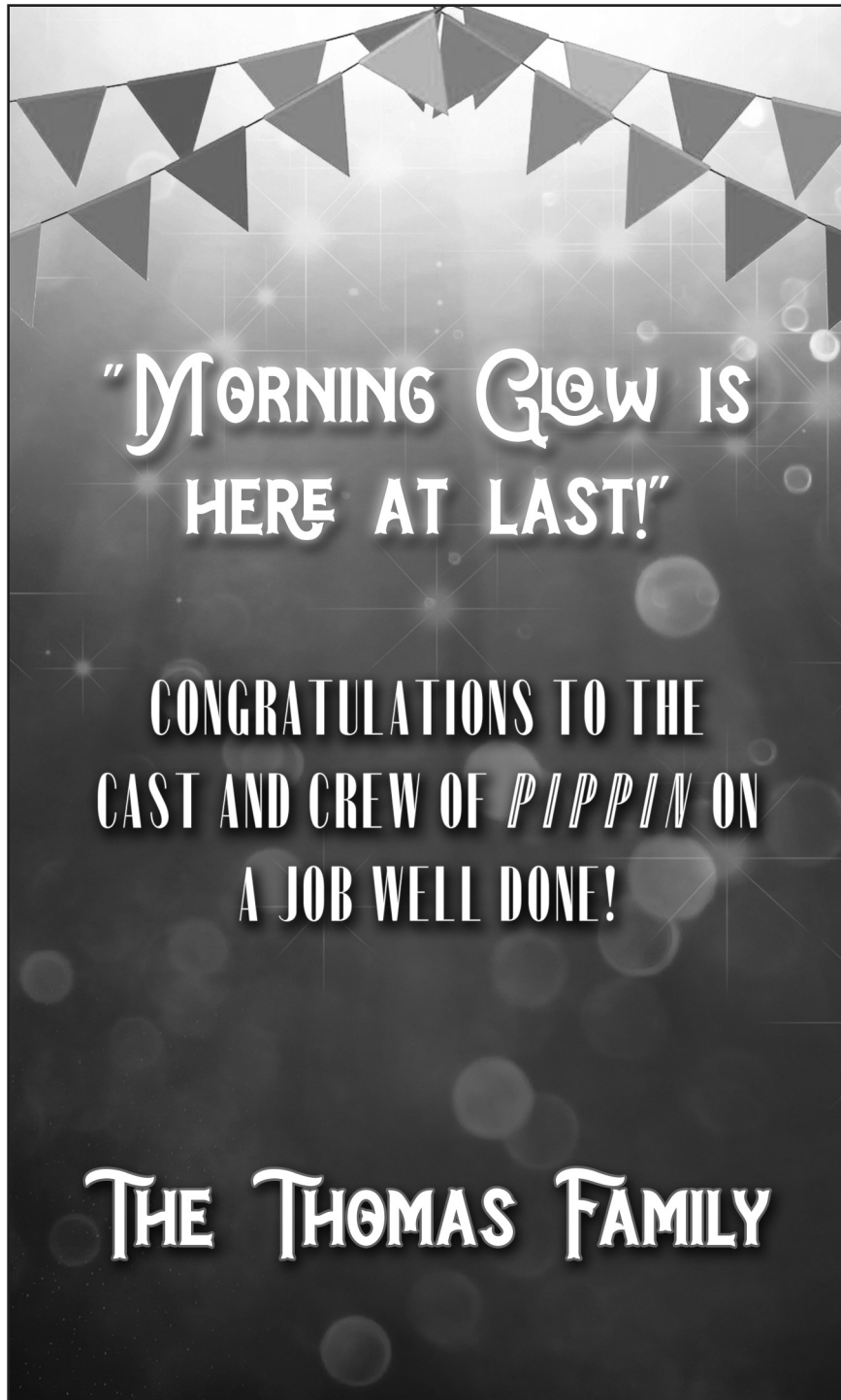
BAND OF PLAYERS

Luna B. Baker, Raven Bandy, Sialia Chambers, Will Chambers,
 Evelyn Cryor, Aila Dann, Sydney Hrinda, Julia Killmeyer, Paislie Klein-Merlin,
 Helena Mercolini, Eliza Sterbal, Cyma Tabbara, Henry Thomas,
 Aftyn Tomaceski, Caris Tomaceski

PITTSBURGH CLO ACADEMY ORCHESTRA

Skylar Bunk, *Conductor*

Keyboard 1.....Skylar Bunk
 Keyboard 2.....Shelby Williams
 Guitar.....John Maione
 Bass.....Julia Gray
 Reed 1.....Krista Wagner
 Reed 2.....Milt Barney
 Trumpet.....Devon Smeal
 Trombone.....Bob Patterson
 Drums / Percussion.....Tom Earley



Griffith COACHING

ACTING STUDIO

Congratulations,
to my private students!

Eamonn McElfresh

Lucy Myers

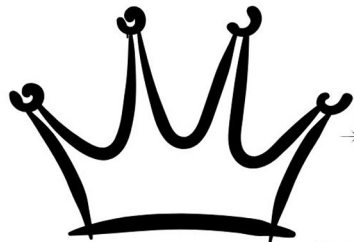
Adalyn Burgoyne

Sialia Chambers

Will Chambers

Caris Tomaceski

Avery Schneider



You've got magic to do!



MUSICAL NUMBERS

ACT 1

SCENE 1: OPENING

Magic To Do.....The Players
Corner of the Sky.....Pippin

SCENE 2: HOME

Home.....Leading Player, Charles, Pippin, Lewis, and Fastrada

SCENE 3: GLORY

War is a Science.....Charles and The Players
Glory.....Leading Player and The Players

SCENE 4: SIMPLE JOYS

Simple Joys.....Leading Player and The Players
No Time at All.....Berthe and The Players
With You.....Pippin and The Players

SCENE 5: REVOLUTION

Spread a Little Sunshine.....Fastrada
Morning Glow.....Pippin and The Players

INTERMISSION

There will be one fifteen-minute intermission.

ACT 2

SCENE 1: POLITICS

SCENE 2: ENCOURAGEMENT

Right Track.....Leading Player and Pippin

SCENE 3: ORDINARY LIFE

Kind Of Woman.....Catherine
Extraordinary.....Pippin and The Players
Love Song.....Pippin and Catherine
I Guess I'll Miss the Man.....Catherine

SCENE 4: THE FINALE

Finale.....Leading Player, Pippin, and The Players

Pittsburgh CLO Academy

*Graciously
Acknowledges*

the following sponsors

Bachman's Roofing

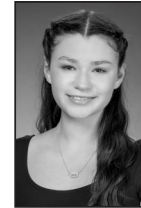
Bender Consulting Services Inc.

Pittsburgh CLO Academy Fanbase

Anonymous Donor

If you are interested in becoming a sponsor of a Pittsburgh CLO Academy production, please contact Alex Righetti at 412-281-2234 or arighetti@pittsburghclo.org

WHO'S WHO



LUNA B.
BAKER



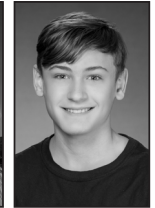
RAVEN
BANDY



ADALYN
BURGOYNE



SIALIA
CHAMBERS



WILL
CHAMBERS



DYLAN
CONWAY



EVELYN
CRYOR



AILA
DANN



KAITLYN
HOWE



SYDNEY
HRINDA



JULIA
KILLMEYER



PAISLIE
KLEIN-MERLIN



MARIANA
MANGUAL



EAMONN
MCELFRESH



HELENA
MERCOLINI



LUCY
MYERS



AVERY
SCHNEIDER



ELIZA
STERBAL



SIDDALY
SYKES



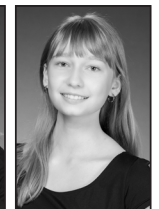
CYMA
TABBARA



HENRY
THOMAS



AFTYN
TOMACESKI



CARIS
TOMACESKI



WHO'S WHO - CAST

LUNA B. BAKER (*Player*) is a 13 year-old student at Pittsburgh CAPA Middle School, where her focus is in musical theatre. She trains in jazz, tap, and ballet at Pittsburgh CLO Academy and receives private voice lessons from Lorriana Markovic. Luna has been involved in multiple CLO Academy and CLO Academy summer camp productions. She is so proud to be a part of the *PIPPIN* cast and CLO family. Luna wants to thank all her teachers, family, and friends for their support.

RAVEN BANDY (*Player*) is in her sophomore year at Pittsburgh CAPA as a musical theater major. She is ecstatic to be a part of this extremely talented cast. Other favorite shows include *Natasha, Pierre, and the Great Comet of 1812* (Ensemble, Dance Captain), *The Addams Family Jr.* (Morticia Addams), *Legally Blonde: The Musical* (Brooke Wyndham), and *Roald Dahl's Matilda: The Musical* (Rudolpho). She would like to thank her family and all her teachers for always pushing her to be her best. Raven hopes you enjoy this glorious show!

ADALYN BURGOYNE (*Fastrada*) is super excited for her first Pittsburgh CLO Academy show! She is a junior at Avonworth High School where she participates in their yearly play and musical. Her most recent roles were Toby from *Sweeney Todd* (Gene Kelly finalist for Best Supporting Actress) and Little Red from *Into the Woods*. She was also a Prime Stage finalist for Best Supporting Actress for her role as Ms. Patty in *The Curious Savage*. Adalyn is a part of CLO Academy's Professional Development Program, takes voice lessons under Amy Stabnau, and acting lessons under Daina Griffith. She would like to thank all of the incredible staff at CLO Academy for this incredible opportunity and for all they do to help her pursue her passion. Adalyn also wants to send love and appreciation to her family for their unending support.

SIALIA CHAMBERS (*Player*) is an 11th grade musical theater major at Pittsburgh CAPA. Previous CAPA roles include Audrey (*Little Shop of Horrors*), Ensemble, u/s Sonya (*Natasha, Pierre, and the Great Comet of 1812*), Ensemble (*Sweeney Todd*). Previous CLO Academy Roles include Bebe (*A Chorus Line*), Glen CoCo (*Mean Girls*) and Evie (*Descendants*). Sialia studies voice with Amy Stabnau and acting with Daina Griffith.

WILL CHAMBERS (*Player*) is an 8th grade theater major at Pittsburgh CAPA. Previous roles include Randy (*A Christmas Story*) with Pittsburgh Public Theater; Jester (*Once Upon a Mattress*) and Old Man Jenkins (*SpongeBob the Musical*) at CAPA. Awards include three honorable mentions in PPT's Shakespeare Monologue Contest. Will studies voice with Amy Stabnau, acting with Daina Griffith, and fences with the Pittsburgh Fencers' Club.

DYLAN CONWAY (*Lewis*) is thrilled to be making his Pittsburgh CLO Academy debut in this production! An 8th grader at South Fayette Middle School, he has appeared as Willy Wonka in *Roald Dahl's Willy Wonka*, Plankton in *SpongeBob the Musical*, Wes Warnicker in *Footloose*, and most recently as SpongeBob in *SpongeBob the Musical* at Little Lake Theatre. A vocalist and multi-instrumentalist, Dylan sings, and plays piano, drums, and ukulele. He has had a deep love for music and theatre since early childhood. He is grateful to be training and performing at CLO Academy and is excited to be performing in *PIPPIN* this year!



WHO'S WHO - CAST

EVELYN CRYOR (*Player*) is returning to the Pittsburgh CLO Academy stage and is very excited to be part of *PIPPIN*. Evelyn is a freshman dance major at Pittsburgh CAPA. She performs all year as a featured dancer and soloist with Larry Cervi's East End Kids. Previous theatrical performances include: #5 Don in *A Chorus Line* (CLO Academy), Puck in *A Midsummer Night's Dream* (Steel City Shakespeare Center). She has performed with the Gemini Children's Theater in *Jack and the Beanstalk* (Amethyst), *Pinocchio* (Cat), and *The Jungle Book* (Chil the Kite).

AILA DANN (*Player*) is a Sophomore at Pittsburgh CAPA and is currently in the theater department. She began theater in 6th grade and has been attending Pittsburgh CLO Academy for a year now. Aila has had the opportunity to be in *Into the Woods* as Granny and Lucinda, *The Little Mermaid* as Chef Louis, *Newsies* as Warden Snyder, as well as numerous other performances and shows. Aila is honored to be in the cast of *PIPPIN* as an ensemble member, and she would like to thank the wonderful teachers and directors who have made this show shine. Aila hopes you enjoy the "Extraordinary" show where there is "Magic to Do".

KAITLIN HOWE (*Charles*) is thrilled, but very sad, to be taking the Stage at Pittsburgh CLO Academy for the last time. Kaitlin has been studying at the CLO Academy since she was seven and has loved every single moment of it. This place truly made her who she is today and she is forever grateful to the whole team. You may have seen her in *A Chorus Line*, *Mean Girls*, *Into the Woods*, *Joseph*, and *The Music Man* (most likely as a funny mom or a man). Kaitlin has also had the opportunity to perform professionally with the CLO at the *Shirley Jones Gala*, and *The Wizard of Oz* at Heinz Field. Kaitlin is eternally grateful to her parents for their ceaseless support for her crazy dream. She hopes you enjoy the show!

SYDNEY HRINDA (*Player*) is excited to once again take the stage with Pittsburgh CLO Academy! She is in her 3rd year of CLO Academy classes and was previously Kristine in last fall's production of *A Chorus Line*. Sydney is a member of the McKeesport Little Theater Juniors where previously she played Nemo in *Finding Nemo Jr* and Manal in *Aladdin Jr*. At school, Sydney is involved in Show Choir and will be participating in her first High School musical this Spring! She would like to thank all of the production staff of *PIPPIN* and looks forward to all of her future theater adventures!

JULIA KILLMEYER (*Player*) is honored to be performing in *PIPPIN* with Pittsburgh CLO Academy. A passionate and dedicated young artist, Julia has portrayed Dory in *Finding Nemo Jr.* and Marion Paroo in *The Music Man Kids*, both with a local youth theater organization. She was also privileged to perform with the Broadway Ensemble at Carnegie Music Hall in New York City. Julia is currently a 9th grade student at Hampton High School and extends her sincere gratitude to her family for their unwavering support; and to her teachers for their continued encouragement and inspiration.

PAISLIE KLEIN-MERLIN (*Player*) is thrilled to make her Pittsburgh CLO Academy debut in *PIPPIN*! She has been performing on stage since the age of 7, appearing in productions across three different states. Some of her favorites include Fiona in *Shrek Jr*, Young Elsa in *Frozen Jr*, and Glinda in *The Wizard of Oz*. A highlight of her theater journey was spending this past summer at Interlochen Center



WHO'S WHO - CAST

Paislie Klein-Merlin Bio Continued...

for the Arts where she participated in the six-week musical theater program and performed in the first-ever high school production of *Beautiful: The Carol King Musical*. Paislie has loved working with the incredible staff and talented students at CLO Academy. Outside of theater, she is a member of the school's track and field team, competing in sprints, hurdles, and pole vault. She's also active in French Club and the Best Buddies program.

MARIANA MANGUAL (*Leading Player*) is a senior at Seton-LaSalle and is thrilled to be a part of *PIPPIN* at Pittsburgh CLO Academy. Over the past few years she's taken classes at CLO Academy while doing summer shows at Pittsburgh Musical Theater. She's earned two Gene Kelly Award nominations and a 2025 win that allowed her to perform at the Jimmy Awards in New York City. She also recently originated a role for the first time in CLO's *Madame Clicquot* World Premiere, as Young Barbe-Nicole. After graduation, she plans to pursue a BFA in Musical Theater, and is excited for what the future will bring!

EAMONN MCELFRISH (*Pippin*) is a Senior at Pittsburgh CAPA, a student at Daina Griffith Acting Studio, Higher Voice Studio and Pittsburgh CLO Academy. Eamonn enrolled in CLO Academy in 2015 after seeing a performance of *Newsies* and saying he felt more flexible just watching them and he "needs dance classes!". It's been a life full of theater from that day forward. Eamonn would like to thank CLO Academy for all of their support over the years and for being his second home. The staff and friends he has made are like family and he will keep what he has learned from them with him as he, hopefully, continues his acting education in the fall in a BFA acting program. This performance is possible because of everything he's learned from Danny Herman and Rocker Verastique, and also in loving memory of Leon Ziots.

HELENA MERCOLINI (*Player*) is a 8th grader at Ave Maria Academy (Mount Lebanon) and is thrilled to be in her second show at Pittsburgh CLO Academy. Helena's recent performances include *13 Jr* (Featured Ensemble), *Beetlejuice Jr* (Barbara Maitland), and *Legally Blonde Jr* (Aaron Schultz). One of her favorite roles that she played was Ms. Darbus in *High School Musical* on Stage at Ave Maria. She would like to thank the CLO Academy staff, cast of *PIPPIN*, her friends, parents, brother Louis, and especially Kristen Hancock for introducing her to the love of musical theater!

LUCY MYERS (*Berthe*) is a senior student at Avonworth High School. Lucy studies dance with Pittsburgh CLO Academy's Professional Development Program, Dance Explosion Arts Academy, Pittsburgh Musical Theater. Currently, Lucy is a student at Molly Stater Music Studio, and Daina Griffith Acting Studio. She was nominated for a 2024 and 2025 Gene Kelly Outstanding Actress award. Her favorite past productions include; *Annie* (Tessie, Byham Theater), *Joseph and the Amazing Technicolor Dreamcoat* (Ensemble, Byham Theater), *Footloose* (Rusty, Gargaro Theater/West End Canopy), *Grand Hotel* (Fleamchen, Avonworth), *The Mystery of Edwin Drood* (Rosa Bud, Avonworth), *Into The Woods* (Witch, Avonworth), and her most recent role, *Sweeney Todd* (Mrs. Lovett Avonworth). Lucy humbly thanks her family and teachers for their guidance and support!

AVERY SCHNEIDER (*Theo*) is thrilled to be performing in *PIPPIN*! He recently



WHO'S WHO - CAST

appeared as Gomez in Pittsburgh CLO Academy's *Addams Family Jr.* and has enjoyed roles including Jason in *Falsettos*, Nemo in *Finding Nemo Jr.*, and Earthworm in *James and the Giant Peach* at Cresson Lake Playhouse. He also played Ralphie in Pittsburgh Public Theater's *A Christmas Story* and has performed in numerous productions with Indiana Players. Avery loves the stage and was proud to earn first place in the 2025 Pittsburgh Shakespeare Competition for his monologue. He thanks the cast and team for their support and is excited to share this journey!

ELIZA STERBAL (*Player*) is a sophomore at Bethel Park High School and is thrilled to be in her first Pittsburgh CLO Academy fall show! Some of her favorite credits include *Beauty and the Beast* (Wardrobe), *High School Musical Jr* (Ms. Darbus), and most recently *A Midsummer Night's Dream* (Flute). She currently trains in musical theatre as a part of the CLO Academy PDP Program and the Collective; and voice with Hilerie Klein Rensi. She would like to thank her parents, the creative team, and castmates for such an extraordinary experience!

SIDDALY SYKES (*Catherine*) is performing in her 7th musical, and she has loved every second of being a part of it. She'd like to thank the entire cast for their dedication to the show and for the great friends she's made, as well as the entire faculty at CLO Academy for making this opportunity possible!

CYMA TABBARA (*Player*) is thrilled to be joining the cast of *PIPPIN*! She has been participating in musical theatre for the past couple years playing a Brainiac in *High School Musical*, a Maiden in *Cinderella*, and the Bishop in *Frozen Jr.* She would like to give a special shout out to the director for helping us make this show happen and all of the cast support team.

HENRY THOMAS (*Player*) is a 13-year-old student at KO Middle School and has proudly studied at Pittsburgh CLO Academy since 2018. He is excited to be a part of this production as it has challenged him to grow into a more mature role. He wishes to thank his family, friends, and instructors at CLO Academy, South Park Children's Theatre, and KO Middle School for their continued guidance and support.

AFTYN TOMACESKI (*Player*) is thrilled to join this Pittsburgh CLO Academy production of *PIPPIN*! Aftyn is an eighth grade student at Canon McMillan Middle School. Favorite past roles include Alena Synkova in *I Never Saw Another Butterfly* (Prime Stage Theater), Karen Plankton in *The SpongeBob Musical: Youth Edition*, Janet in *Schoolhouse Rock Live, Jr.*, and Eric in *Lord of the Flies* (Little Lake Theatre Company). Many thanks to the faculty at CLO Academy, her acting coach Caroline Connell, the *PIPPIN* cast and directors, and her family for their support!

CARIS TOMACESKI (*Player*) is thrilled to join this Pittsburgh CLO Academy production of *PIPPIN*! Caris is an eighth grade student at Canon McMillan Middle school and most recently appeared in *Camelot* (PCLO). Favorite past roles include Esther Jane Alberry in *A Christmas Story: The Play* (Pittsburgh Public Theater), Lavender in *Matilda*, and Violet Beauregarde in *Willy Wonka* (Little Lake Theatre Company). Many thanks to the faculty at CLO Academy, her acting coach Daina Griffith, Tiffany Meyers at Higher Voice Studio, the *PIPPIN* cast and directors, and her family for their support!



WHO'S WHO - CREATIVE

Music Theatre International Bio Continued...

rights to perform the greatest selection of musicals from Broadway and beyond. Founded in 1952 by composer Frank Loesser and orchestrator Don Walker, MTI is a driving force in advancing musical theatre as a vibrant and engaging art form. MTI works directly with the composers, lyricists and book writers of these musicals to provide official scripts, musical materials and dynamic theatrical resources to over 100,000 professional, community and school theatres in the US and in over 150 countries worldwide. MTI is particularly dedicated to educational theatre, and has created special collections to meet the needs of various types of performers and audiences. MTI's Broadway Junior™ shows are 30- and 60-minute musicals for performance by elementary and middle school-aged performers, while MTI's School Editions are musicals annotated for performance by high school students.

PITTSBURGH CLO ACADEMY OF MUSICAL THEATER (*Education Academy*) In association with one of the country's foremost regional theaters, Pittsburgh CLO Academy of Musical Theater has been educating students in all aspects of musical theater training since 1989. The CLO Academy believes in inspiring and empowering students to enhance technique and creativity through its many class offerings. It provide students with unique opportunities to become a cultural presence in the artistic community and to give voice to their own creative spirit. Students are able to select acting, voice, and dance classes or can bring all elements together in our crafted group packages. For more information about Pittsburgh CLO Academy and how you can get involved please visit PITTSBURGHCLO.ORG/EDUCATION

PITTSBURGH CLO (*Producing Company*) has been the driving force for 78-years behind the preservation, creation and promotion of live musical theatre since 1946. Founded in the years following WWII as a way to bring Pittsburgh together for a community experience, the company has grown to become one of the largest regional musical theatre organizations in the country. The organization's commitment to preserving, creating, and promoting live musical theatre is evident in its diverse programming, which includes beloved Broadway classics as well as the development of new works. PCLO's dedication to nurturing emerging talent is commendable, with numerous artists (Billy Porter, Renée Elise Goldsberry, Rob Marshall, Kathleen Marshall, Shirley Jones and many more) launching their careers under its wing. The mission extends beyond the summer series with other ongoing initiatives such as the Pittsburgh CLO Academy of Musical Theatre, the Construction Center for the Arts, the acclaimed Gene Kelly Awards for Excellence in High School Musical Theater and The National High School Music Awards (The Jimmys). Every ticket purchased impacts our own hometown, Pittsburgh, in a variety of ways beyond the stage performance. Pittsburgh CLO has always been a proud economic generator, hiring local theatre professionals to bring the best musical theatre to life. Since 1946, loyal Patrons, Subscribers, and Donors have stood beside our organization to ensure production of Broadway caliber shows right here in our hometown. Pittsburgh CLO is excited to continue creating magical musical memories that are by Pittsburgh, for Pittsburgh and partnered with Pittsburgh all year long! For more information, please visit PITTSBURGHCLO.ORG

THANK YOU CLO ACADEMY OF MUSICAL THEATER



**THANK YOU
PATTY MALONEY,
JIM SCRIVEN AND
THE ENTIRE
TALENTED TEAM
OF TEACHERS,
DIRECTORS,
COLLABORATORS
AND
ADMINISTRATORS
AT THE CLO
ACADEMY.**



**YOU'VE HELPED
OUR GIRL REALIZE
HER DREAMS OF
PERFORMING BUT
MORE
IMPORTANTLY,
HELPED SHAPE
HER INTO THE
WOMAN SHE HAS
BECOME. WE ARE
BEYOND
GRATEFUL
KAITLIN HAS
BEEN ABLE TO
CALL THE CLO
ACADEMY HOME
FOR THE LAST 10
YEARS.**



the Howe family



Cheers to the CLO Academy students on their production of *Pippin!*

B OVER 2,500 REVIEWS ON Google ★★★★★

BACHMAN'S ROOFING:
THE TRI-STATE AREA'S TRUSTED ROOFERS

50+ Years of Craftsmanship, One Name You Can Trust.

(888) 775-7384 CONTACT US

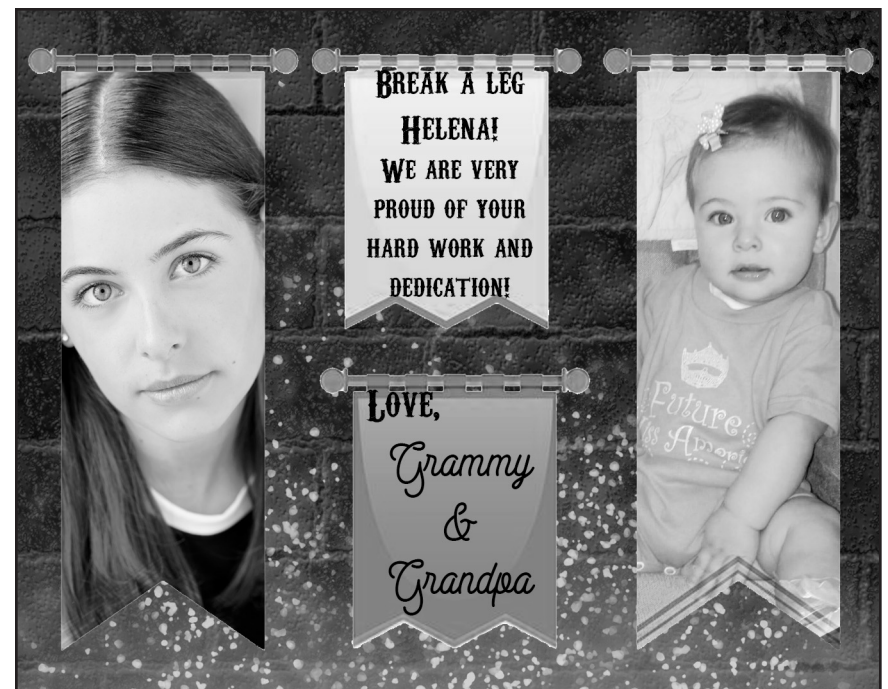
est. 1972
50+
Years

bachmansroofing.com

"Think how you'll shine!"

Break a leg to the cast and crew of *Pippin!*

-The Murray-Balas Family





The Director and Choreographer are members of the Stage Directors and Choreographers Society, a national theatrical labor union.



United Scenic Artists represents the designers and scenic painters for the American Theatre.



Backstage and Front of the House Employees are represented by the International Alliance of Theatrical Stage Employees (or I.A.T.S.E.).



The actors and stage managers employed in this production are members of Actors' Equity Association, the union of professional actors and stage managers in the United States.



The Musicians, Conductors, Music Preparation Personnel and Librarians employed in this production are members of the American Federation of Musicians of the United States and Canada.



ARTS
pennsylvania
COUNCIL ON THE ARTS

Pittsburgh CLO receives state arts funding support through a grant from the Pennsylvania Council on the Arts, a state agency funded by the Commonwealth of Pennsylvania and the National Endowment for the Arts, a federal agency.



The Allegheny Regional Asset District, a county agency created to support and finance regional assets, including libraries, parks, cultural groups, sports and civic facilities, and to distribute tax relief to the 128 municipalities of Allegheny County.



The National Endowment for the Arts is a public agency dedicated to supporting excellence in the arts, both new and established; bringing the arts to all Americans; and providing leadership in arts education. Established by Congress in 1965 as an independent agency of the federal government, the Endowment is the nation's largest annual funder of the arts, bringing great art to all 50 states, including rural areas, inner cities, and military bases.



Your sunny disposition on stage has always been a joy to watch.




Keep shining and blow us away, kiddo!

*Love,
Connor
& Julia*



"Being true to yourself never goes out of style."
- Legally Blonde

*Love,
Mom, Dad,
Baylen, & Tru*




Helena,

You always shine bright but sparkle on stage!

We can't wait to see you in *Pippin!*

We love you very much,

Mom, Dad, & Louis





BENDER
Consulting Services, Inc.

**30 YEARS OF
DISABILITY
TALENT
INVESTMENT**



BenderConsult.com




Pittsburgh CLO
GALLERY OF HEROES

CELEBRATING OVER 40 YEARS OF GALLERY OF HEROES

Before George Washington Was President, He Was...

Young Washington


Book by Jason Cell & Andrew Masich
Music & Lyrics by Jason Cell



BRINGING HISTORY TO LIFE!
AN EDUTAINMENT MUSICAL BROUGHT TO YOU!

★
TOURING JANUARY - MAY 2026

412-325-6459
PITTSBURGHCLO.ORG/EDUCATION
BOOK NOW AND MEET YOUR PA ACADEMIC STANDARDS!





PITTSBURGH CLO STAFF

Mark Fleischer, Executive Producer

SALES & MARKETING

Sidney Franczak.....*Marketing Manager*
Greta Agee.....*Graphic and Social Media Coordinator*
Kyle J. Malinosky.....*Marketing Coordinator*

DEVELOPMENT

Wynne Fedele.....*Director of Development*
Molly Campe.....*Manager of Special Events and Projects*
Brandon Marzke.....*Manager of Individual Giving*
Tom McGee.....*Corporate and Foundation Relations Manager*
Dayna Sowers.....*Board Liaison / Development Coordinator*
Levi Von Iderstein.....*Development Data Coordinator*
Sia Zhang.....*Development Associate*

FINANCE & ADMINISTRATION

Angela Langill.....*Director of Finance and Administration*
Michael J. Cerchiaro.....*General Manager*
Kuei-O Lin.....*Accountant*
Angie Staats.....*Seasonal Company Manager*
Tom Stumme.....*Executive Assistant*
Amanda Wilcox.....*Controller*

PRODUCTION/CONSTRUCTION CENTER

Macarena Subiabe.....*Production Manager*
Michele Sullivan.....*Construction Center Business Manager*
BJ Lipari.....*Scenic Charge*
Brendan Smith.....*Foreman*

EDUCATION

Jim Scriven.....*Director of Education*
Patty Maloney.....*Principal*
Anna Balich.....*Receptionist*
Brady D. Patsy.....*Community Engagement Manager*
Aidan Quartana.....*Education Associate*
Alexander Righetti.....*Education Operations Coordinator*

CLO ACADEMY FACULTY

DANCE.....Christopher Bandy, Jennifer Connors,
Anya Epstein, Hannah Feldhues, Elexa Hanner,
Svetlana Novodran, LaTrea Rembert, Grace Schmader,
Erin Seaberg, Emily Stoken
VOICE.....Debbie Boughner, Catie Brown, Skylar Bunk,
Emma Dale, Adam Fladd, Roseanna Irwin,
Lorrana Markovic, Michael McKelvey, Shelby Williams
ACTING.....Zanny Laird, Jennifer Lybarger,
Rob James, Jason Matthews,
Michael McKelvey, Erin Seaberg, Ted Watts
PIANO.....Debbie Boughner, Catie Brown, Roseanna Irwin
MUSICAL THEATRE.....Jennifer Connors, Laura Daniels,
Anya Epstein, Adam Fladd, Charles Hall,
Elexa Hanner, Roseanna Irwin, LaTrea Rembert,
Erin Seaberg, Emily Stoken, Shelby Williams
CREATIVE VISION.....Cassidy Adkins,
Alyssa Bruno-Walls,
Sandy Dowe, Darrin Mosley Jr.
NEW HORIZONS..... Laura Daniels, Colleen Nesbitt,
Alyssa Bruno-Walls

PIPPIN PRODUCTION

Elizabeth Amstutz.....*Lighting Designer*
Abby Brown.....*Stage Hand*
Skylar Bunk.....*Music Director*
Mark Eyer.....*Sound Designer*
Nick Frontz.....*Stage Hand*
Roger O. Hirson.....*Book*
Cloe Joos.....*Stage Hand*
Maddy Koropchak.....*Production Stage Manager*
BJ Lipari.....*Scenic Designer*
Michael McKelvey.....*Director*
Michelle Nowakowski.....*Costume Designer*
Allie Rakowski.....*Costume Assistant*
Stephen Schwartz.....*Music & Lyrics*
Emily Stoken-Bondi.....*Choreographer*



Pittsburgh CLO thanks PNC for their generous support of the PNC Children's School



The Allegheny Regional Asset District, a county agency created to support and finance regional assets, including libraries, parks, cultural groups, sports and civic facilities, and to distribute tax relief to the 128 municipalities of Allegheny County.



Pittsburgh CLO thanks Healthcare Realty for their generous support of the Pittsburgh CLO Academy



@PittsburghCLO



@PittsburghCLO



@PittsburghCLO



@PittsburghCLO

LET'S GET SOCIAL!

Follow Us To Peek Behind The Curtain

Pittsburgh CLO
CELEBRATING MUSICAL THEATRE

Costume Sale!

Saturday, October 11
10am - 3pm

CLO Construction Center for the Arts
997 Sherosky Way Springdale, PA 15144
Suits & Tuxes, Dresses & Gowns, Uniforms, Hats,
Shoes, Accessories, Specialty Costume Pieces & More!

Payments Accepted: Cash, Credit Cards, and Business or School Checks
(no personal checks)

Come shop for your costumes for Halloween,
Renaissance Faire, or next theatrical production!

FIND YOUR PURPOSE

AS AN AVIATION TECHNICIAN

Learn How @ PIA.EDU

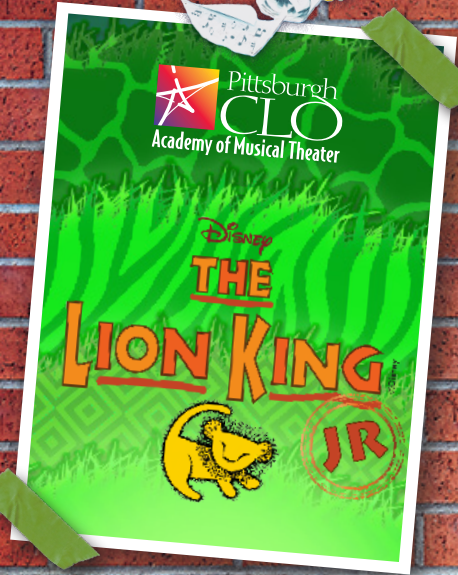
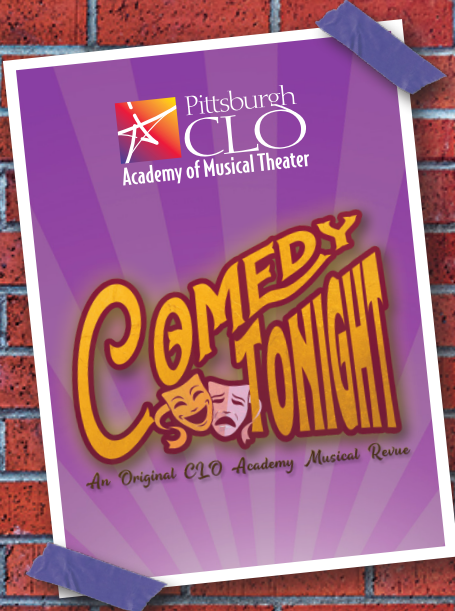
Pittsburgh Campus
School for Aviation Maintenance

#1
TWO-YEAR TRADE SCHOOL
FORBES 2018



Pittsburgh
CLO
Academy of Musical Theater

UPCOMING PRODUCTIONS!



NOVEMBER 19, 2025
GREER CABARET THEATER
WEDNESDAY • 7:30 PM

FEBRUARY 21, 2026
CAPA THEATER
SATURDAY • 2:00 & 6:00 PM



FOR MORE INFORMATION ON UPCOMING PCLO ACADEMY PRODUCTIONS
PITTSBURGH CLO.ORG  412-281-2234