



Pittsburgh
CLO

CELEBRATING MUSICAL THEATER

INTO THE WOODS

#PCLOIntoTheWoods | @PittsburghCLO

UP NEXT!



Pittsburgh
CLO

CELEBRATING MUSICAL THEATER

PNC
Spotlight Series

The SOUND of MUSIC



HANLEY
SMITH

as Maria



WILL
RAY

as Captain von Trapp



DANIELLA
DALLI

as Mother Abbess



MADDIE
DICK

as Liesl von Trapp

Denotes CLO Alum 



GET TICKETS

JULY 11 - 16

BENEDUM CENTER

"The Hills Are Alive!" The final collaboration between Rodgers & Hammerstein was destined to become one of the world's most beloved musicals. The inspirational true story tells the tale of young postulant Maria Rainer, who proves too high-spirited for the religious life and is dispatched to serve as governess for the seven children of a widowed naval Captain. Maria transforms the Von Trapp family home from a place of strict rules and regulations to one filled with joy, laughter, and music. In the process, Maria wins the hearts of all seven children—and their father, Captain Von Trapp. THE SOUND OF MUSIC features a trove of cherished songs, including "Climb Ev'ry Mountain," "My Favorite Things," "Do Re Mi," "Sixteen Going on Seventeen" and the title number.

*Music by Richard Rodgers, Lyrics by Oscar Hammerstein II,
Book by Howard Lindsay and Russel Crouse*



PITTSBURGH CLO BOARD OF DIRECTORS

OFFICERS



Alexander Overstrom
Chairman of the Board



Edward T. Karlovich
President

Honorary Chairman of the Board
Julie Andrews

Chairman of the Board
Alexander Overstrom

President
Edward T. Karlovich

Vice President/CLO Ambassadors
Luke A. Sizemore

Vice Presidents/Finance
Timothy K. Zimmerman
John A. Lemmex

Vice Presidents/Cabaret Theater
John Dick
Meghan Barrera
Leah Ohodnicki

Vice President/
Construction Center & Facilities
Yarone Zober

Vice Presidents/Development
Mark J. Minnaugh
Joseph V. DiVito, Jr.
Laurie M. Mushinsky

Vice Presidents/Education
Christine M. Kobus
George Gans

Vice Presidents/Human Resources
Lesley Evancho
Leslie S. Hyde

Vice Presidents/Marketing
Michael F. Walsh
Jon Galatis

Vice Presidents/Production,
New Works Development &
Funding
Peter J. Germain
Dennis Konkovic
Stephen S. Bloomberg

Vice Presidents/Nominating
Scott F. Neill
Glenn D. Todd

Vice Presidents
Pritam Advani
Daniel I. Booker
Sherri Grusak
Richard S. Hamilton
Laura Penrod Kronk

Secretary
Johanna G. O'Loughlin

Treasurer
Joseph V. DiVito, Jr.

Executive Director Emeritus
Charles Gray

Executive Producer Emeritus
Van Kaplan

Corporate Counsel
James M. Doerfler

Chairmen of the Board Emeritus
Helen Hanna Casey
William M. Lambert
George A. Davidson, Jr.
Joseph C. Guyaux
James E. Rohr
Daniel I. Booker
Louis D. Astorino

DIRECTORS

Joyce A. Bender
Tony Benevento
Patricia M. Blenko
Jane Dixon
Clare Donahue
Gus Engel
Emilie Hammerstein

Vicki C. Henn
Paul Hennigan
Leon Hoffman
Margaret Izzo
Brian Koble
Diane B. Landers
Nicholas J. Liparulo

Richard J. Lipovich
Robert C. McCartney
Margaret McLean
Timothy M. McVay
Christina P. O'Toole
Robin S. Randall
Michael Rizzo

Eric A. Schaffer
Gregg Schmidtetter
Luke A. Sizemore
Arlene Sokolow
Helen Spalaris
LaShawnda Thomas
Joann L. Tissue

The Honorable
Debra Todd
Carla J. Vrsansky
Jake Wheatley, Jr.

ADVISORY BOARD

George Ator

Joan Bogut

Charles R. Fallon

Rosemarie R. Parse, Ph.D.

Melvin D. Rex



We are proud to be a corporate sponsor of **Pittsburgh CLO** and the outstanding production of *Into the Woods*.

[reedsmith.com](https://www.reedsmith.com)

ReedSmith

Driving progress
through partnership



Welcome Friends and Family!

Last week we waved Bon Voyage to the SS American – thank you all who attended *ANYTHING GOES* and launched our Summer Series with a tapping great time! Now, journey with us *INTO THE WOODS* as we share Stephen Sondheim and James Lapine’s Tony Award-winning musical from 1987. Set in the comfortable and nostalgic world of our childhood fairy tales, these two Broadway masters weave a new story for us as adults – sometimes funny, sometimes frightening, but always rooted in our shared human experience. The familiar characters of Cinderella, Jack, Rapunzel, and more unlock common emotions and shared insights that affect all of us as we move throughout our daily lives.

There is so much to enjoy and unpack in this humorous and sometimes serious tale, but as I move through my day it is the lyrics of “No One Is Alone” that most resonates with me now. During the stresses and demands of our modern life it is sometimes hard to remember that we are not alone. I know it is for me. We take on responsibilities, isolate ourselves, and do our best to carry on. Loneliness is so pervasive today that Surgeon General Dr. Vivek Murthy recently raised the alarm about the impact of what he is calling an “epidemic of loneliness and isolation”. According to his report, even before the onset of the pandemic shutdown, approximately half of U.S. adults reported experiencing measurable levels of loneliness which impacts our mental, physical, and societal health. But Dr Murthy says there is an answer, “our relationships are a source of healing and well-being hiding in plain sight. Given the significant health consequences of loneliness and isolation, we must prioritize building social connections”.

I firmly believe the CLO can play a role in this effort. Think of the joy you experience in the audience and the memories you make attending CLO musicals. You can heed Dr. Murthy’s call by sharing your love of musicals with others in your life. Is there a friend, family member, colleague, or neighbor who would benefit from the social connection of attending a live musical? Why not invite them to join you at a CLO show this summer? CLO’s next show is the Rodgers & Hammerstein classic *THE SOUND OF MUSIC* (July 11 – 16). This is the perfect show for the dedicated fan of musical theatre or as an introduction to someone who has not yet discovered the joy of musicals. And it cannot be fully experienced sitting alone on a couch at home.

Here at Pittsburgh CLO, we have planted our own magic beans since 1946 in our own community to share the power of musical theater made by Pittsburgh, for Pittsburgh, and in partnership with Pittsburgh. Thank you to all of you and our community’s continued support, because without you, we would not be able to do what we do!

Mark Fleischer
Executive Producer



The Allegheny Regional Asset District, a county agency created to support and finance regional assets, including libraries, parks, cultural groups, sports and civic facilities, and to distribute tax relief to the 128 municipalities of Allegheny County.

THEATER CONNECTS THE WORLD. SO DO WE.

Just like the Pittsburgh Civic Light Opera, we're passionate about bringing people together, creating meaningful moments and inspiring new heights.

Delta is proud to be the official airline partner of the Pittsburgh CLO.



KEEP CLIMBING



DELTA



JUNE 27 - JULY 2, 2023



MARK FLEISCHER, *Executive Producer*
Presents

INTO THE WOODS

MUSIC AND LYRICS BY **STEPHEN SONDHEIM**

BOOK BY **JAMES LAPINE**

Originally Directed on Broadway by James Lapine
Orchestrations by Johnathan Tunick

Original Broadway production by

Heidi Landesman Rocco Landesman Rick Steiner
M. Anthony Fisher Frederic H. Mayerson Jujamcyn Theaters

Originally produced by the Old Globe Theater, San Diego, CA.

**THEO ALLYN • CONNOR BAHR • ALLISON CAHILL • CAROLEE CARMELLO • JOE CARROLL
MELESSIE CLARK • ALYSSA GIANNETTI • HALEY HOLMES • CHRISTINE LAITTA
JHARDON DISHON MILTON • PATTI MURIN • MANU NARAYAN • BRADY D. PATSY
JOE SERAFINI • KYLA STONE • JORDAN TYSON • GENE WEYGANDT
SALLY WIGGIN • LU ZIELINSKI**

SCENIC DESIGNER LIGHTING DESIGNER COSTUME DESIGNER SOUND DESIGNER
PAUL WONSEK PAUL MILLER DUSTIN CROSS CHRIS EVANS

HAIR AND MAKEUP DESIGNER PUPPET DESIGNER PRODUCTION STAGE MANAGER
JEFF KNAGGS LISA LEIBERNG RENÉE RIMLAND

CASTING

JZ CASTING • GEOFF JOSSELSO, CSA • KATJA ZAROLINSKI, CSA

MUSIC DIRECTOR CHOREOGRAPHER
JAMES CUNNINGHAM WILLIAM CARLOS ANGULO

DIRECTOR

SCOTT WEINSTEIN

The Director and Choreographer are members of the STAGE DIRECTORS AND CHOREOGRAPHERS SOCIETY, a national theatrical labor union.

INTO THE WOODS is presented through special arrangements with Music Theatre International (MTI).

All authorized performance materials are also supplied by MTI. | www.mtishows.com

THE VIDEOTAPING OR MAKING OF ELECTRONIC OR OTHER AUDIO AND/OR VISUAL RECORDINGS OF THIS PRODUCTION OR DISTRIBUTING RECORDINGS ON ANY MEDIUM, INCLUDING THE INTERNET, IS STRICTLY PROHIBITED, A VIOLATION OF THE AUTHOR'S RIGHTS AND ACTIONABLE UNDER UNITED STATES COPYRIGHT LAW.

Pittsburgh CLO is a founding member of the National Alliance for Musical Theatre,
Independent Presenters Network and The Broadway League.

THE GREATEST
EXPERIENCES
ARE THE ONES
YOU CAN TASTE



Travel back to the Roaring '20s
at Omni William Penn Hotel,
where you'll enjoy classic cocktails
and nostalgic décor in our
Speakeasy social lounge.

OMNI  HOTELS
& RESORTS
william penn | pittsburgh

[OMNIHOTELS.COM/PITTSBURGH](https://www.omnihotels.com/pittsburgh)



CAST - IN ORDER OF APPEARANCE

Narrator.....	Gene Weygandt*
Cinderella.....	Kyla Stone*
Jack.....	Joe Serafini*
Milky-White.....	Lu Zielinski
The Baker.....	Manu Narayan*
The Baker's Wife.....	Patti Murin*
Cinderella's Stepmother.....	Christine Laitta*
Florinda.....	Haley Holmes*
Lucinda.....	Melessie Clark*
Jack's Mother.....	Theo Allyn*
Little Red Riding Hood.....	Jordan Tyson*
The Witch.....	Carolee Carmello*
Cinderella's Father.....	Brady D. Patsy
Cinderella's Mother.....	Allison Cahill*
Mysterious Man.....	Gene Weygandt*
Wolf.....	Joe Carroll*
Rapunzel.....	Alyssa Giannetti*
Rapunzel's Prince.....	Jhardon DiShon Milton*
Granny.....	Allison Cahill*
Cinderella's Prince.....	Joe Carroll*
Steward.....	Connor Bahr*
Giant.....	Sally Wiggin

DANCE CAPTAIN:

Jhardon DiShon Milton*

PITTSBURGH CLO ORCHESTRA

James Cunningham, *Conductor*
George Hoydich, *Musical Coordinator*

Cello.....	Joe Bishkoff
Piano.....	Catie Brown
Keyboard.....	Jim Burns
Horn 1.....	Jon Carroll
Violin 2.....	Maureen Conlon Gutierrez
Percussion.....	Paul Evans
Viola 2.....	Louise Farbman
Trumpet in C.....	Drew Fennell
Viola 1.....	Jennifer Gerhard Mangone
Flute/Piccolo.....	Tom Godfrey
Horn 2.....	Matt Litterini
Bass.....	Jeff Mangone Sr.
Clarinet.....	Roi Mezare
Bassoon.....	Linda Morton Fisher
Violin 1.....	Anna Moskal

**Members of the Actors' Equity Association, the union of professional actors and stage managers in the United States.*



HEALTHCARE TRUST OF AMERICA, INC.

HTA is proud to support Pittsburgh CLO.

We're the largest dedicated owner and operator of medical office buildings in the United States with \$148 million invested in over 1 million square feet across the great city of Pittsburgh. We take pride in investing in our local community.

Federal North MOB	191,610 sf
Allegheny Health Network Building	228,870 sf
Corporate One Office Park	116,260 sf
Highmark Penn Avenue Place	557,560 sf

Allegheny Health Network Building
Owned and Operated by HTA



Healthcare Trust of America, Inc.

Dedicated Owner of Best in Class Medical Office

NYSE: HTA

Corporate Headquarters

16435 North Scottsdale Road Suite 320
Scottsdale, AZ 85254
(480) 998-3478
www.htareit.com

HTA Pittsburgh Office

30 Isabella Street
Pittsburgh, PA 15214
(412) 321-3500



MUSICAL NUMBERS

ACT I

<i>Prologue: Into The Woods</i>	Full Company
<i>Hello, Little Girl</i>	Wolf and Little Red Riding Hood
<i>I Guess This Is Goodbye</i>	Jack
<i>Maybe They're Magic</i>	The Baker's Wife
<i>I Know Things Now</i>	Little Red Riding Hood
<i>A Very Nice Prince</i>	Cinderella and The Baker's Wife
<i>First Midnight</i>	Full Company
<i>Giants In The Sky</i>	Jack
<i>Agony</i>	Cinderella's Prince and Rapunzel's Prince
<i>It Takes Two</i>	The Baker and The Baker's Wife
<i>Second Midnight</i>	Full Company
<i>Stay With Me</i>	The Witch
<i>On The Steps Of The Palace</i>	Cinderella
<i>Ever After</i>	Full Company

INTERMISSION

The will be one fifteen-minute intermission.

ACT II

<i>Prologue: So Happy</i>	Full Company
<i>Reprise: Agony</i>	Cinderella's Prince and Rapunzel's Prince
<i>Witch's Lament</i>	The Witch
<i>Any Moment</i>	Cinderella's Prince and The Baker's Wife
<i>Moments In The Woods</i>	The Baker's Wife
<i>Your Fault</i>	Jack, The Baker, Little Red Riding Hood, The Witch, and Cinderella
<i>Last Midnight</i>	The Witch
<i>No More</i>	The Baker and Mysterious Man
<i>No One Is Alone</i>	Cinderella, Little Red Riding Hood, The Baker and Jack
<i>Finale: Children Will Listen</i>	The Witch and Full Company



Meet Our All-Star Cast



Audi



INFINITI



CADILLAC



MAZDA



CHEVROLET



NISSAN



BUICK



GMC



Ford



TOYOTA



HONDA



SUBARU



HYUNDAI



KIA



CHRYSLER



Jeep



DODGE



RAM

At #1 Cochran, our star-studded cast features 19 new car brands and thousands of preowned vehicles. Shop in store at any of our 33 locations or online with *ExpressWay* at Cochran.com.

#1 Cochran GO **1** BETTER
cochran.com

Official Vehicle Provider for Pittsburgh CLO



WHO'S WHO



THEO
ALLYN



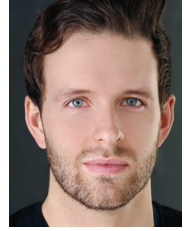
CONNOR
BAHR



ALLISON
CAHILL



CAROLEE
CARMELLO



JOE
CARROLL



MELESSIE
CLARK



ALYSSA
GIANNETTI



HALEY
HOLMES



CHRISTINE
LAITTA



JHARDON
DISHON
MILTON



PATTI
MURIN



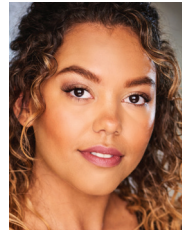
MANU
NARAYAN



BRADY D.
PATSY



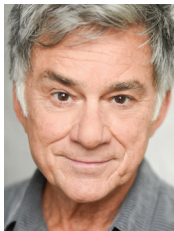
JOE
SERAFINI



KYLA
STONE



JORDAN
TYSON



GENE
WEYGANDT



SALLY
WIGGIN



LU
ZIELINSKI

NEXT TIME
YOU ARE IN THE CITY,
STAY & DINE AT

Fairmont Pittsburgh!

Located at the heart of the city's business, theater and retail hub, the Fairmont hotel in downtown Pittsburgh offers superb and distinctive guest services and accommodations in a luxury setting.

To make a room or dining reservation, please visit our website at Fairmont.com/pittsburgh or call 412.773.8800.

During your stay, dine at **fl.2** – a modern American restaurant in a fresh and intimate setting.



fl.2
modern american

Fairmont Pittsburgh
510 Market Street, Pittsburgh PA 15222
pittsburgh@fairmont.com • 412.773.8800



@fairmontpittsburgh
@fl2pgh



Fairmont Pittsburgh
Floor 2

Life changing is... job training for a better future

Having an impact in the community means championing initiatives that offer our unemployed and underemployed neighbors the training, education, and support that creates a path to a successful career.

UPMC
LIFE CHANGING MEDICINE

[UPMC.com/CommunityImpact](https://www.upmc.com/CommunityImpact)

Marquisha
Pharmacy Services Advocate
UPMC Health Plan



BAZ LUHRMANN'S
REVOLUTIONARY FILM COMES TO LIFE

TRUTH | BEAUTY | FREEDOM | LOVE
MOULIN ROUGE!
THE MUSICAL!

SEPTEMBER 27
- OCTOBER 8, 2023

PRE-BROADWAY PITTSBURGH PREMIERE!



OCTOBER 31 - NOVEMBER 5, 2023



Mrs. Doubtfire
The New Musical Comedy

NOVEMBER 28 - DECEMBER 3, 2023

WRITTEN & DIRECTED BY
CONOR McPHERSON



GIRL
FROM THE
NORTH
COUNTRY

MUSIC & LYRICS BY
BOB DYLAN

JANUARY 9 - 14, 2024

THE LINCOLN CENTER THEATER PRODUCTION
Lerner & Loewe's



MY
FAIR LADY

Directed by
Barclay Shier

JANUARY 30 - FEBRUARY 4, 2024



COMPANY

THE SMASH HIT MUSICAL COMEDY

APRIL 16 - 21, 2024



The Kite Runner

MAY 7 - 12, 2024

BENEDUM CENTER

SEASON TICKETS 412-456-1390 GROUPS 10+ TICKETS 412-471-6930

ORDER ONLINE TODAY!

**EXCLUSIVE SHOW MERCH
ALL SUMMER LONG!**



PCLO - MOO!
Youth/Adult Short
Sleeve T-Shirt



PCLO - INTO THE WOODS
Youth/Adult Short Sleeve T-Shirt



**INTO
THE
WOODS**

JUNE 27 - JULY 2

**NEW SHOW SPECIFIC ITEMS WILL BE ADDED
THROUGHOUT THE SEASON!**

\$22*
*PRICE MAY VARY
DEPENDING ON SIZE



WWW.PITTSBURGHCLCLO.ORG/MERCH



WHO'S WHO - CAST

THEO ALLYN she/they (*Jack's Mother*) is delighted to be working again in her hometown of Pittsburgh! An actor, writer, and improviser, she was most recently seen in the original San Francisco company of *Harry Potter and the Cursed Child*. Regionally, Ms. Allyn has worked with Diversionsary Theatre, Second City, Goodman Theatre, City Theatre, Pittsburgh Public Theatre, Pittsburgh Irish and Classical, and Bricolage. Training includes the Atlantic Theatre Company Acting School and NYU's Tisch School of the Arts. Up next: *Hamlet* with Quantum Theatre.

CONNOR BAHR (*Steward*) is thrilled to be making his CLO debut with this incredible show and cast. Favorite past credits include *The Sound of Music* (Admiral Von Schriber) at PMT, *Sweeney Todd...Fleet Street* (Pirelli), and *The Play That Goes Wrong* (Chris) both at Lincoln Park Performing Arts Center. He would like to thank the entire production team and crew for their tireless work and effort. Thank you to his family for their love and support. And, as always, thank you to Justin and Bobby.

ALLISON CAHILL (*Cinderella's Mother, Granny*) is tickled pink to be part of this production. CLO credits include *The Music Man*, *Oliver!*, *The Full Monty*, *The Sound of Music*, *Sister Act*, and *A Musical Christmas Carol*. Also Pittsburgh Public Theatre, Pittsburgh Playhouse, WV Public, St Vincent College. Favorites: *Roxie*, *Chicago*; *Charity*, *Sweet Charity*; *Anita*, *West Side Story*; *Morales*, *ACL*; *Miss Hannagan*, *Annie*; *Abigail*, *1776*. AEA Member since 1990.

CAROLEE CARMELLO (*The Witch*) 3-time Tony nominee. Broadway: *Bad Cinderella*, *Tuck Everlasting*, *Finding Neverland*, *Scandalous*, *Sister Act*, *The Addams Family*, *Mamma Mia!*, *Lestat*, *Urinetown: The Musical*, *Kiss Me Kate*, *The Scarlet Pimpernel*, *1776* (as Abigail, then Dickinson), *Parade*, *Falsettos*, *City of Angels*. Off-Broadway: *Sweeney Todd...Fleet Street*, *Elegies*, *The Vagina Monologues*, *A Class Act*, *Hello Again* (Obie

Award), ...*Wholesale*, *Das Barbecü*, *John and Jen*. Screen: *Dopesick*, *The Good Fight*, *Evil*, *The Deuce*, *Marvelous Mrs. Maisel*, *Madam Secretary*, *Smash*, *Law and Order: SVU*, *Frasier*, *Ed*, *Indoor Boys*, *Remember W.E.N.N.* (SAG Award nomination) Pittsburgh CLO: *Grease* (1989), *Anything Goes* (2000)

JOE CARROLL (*Cinderella's Prince, Wolf*) has been seen on Broadway in *Disney's Frozen* (Hans), *Bandstand* (Johnny Simpson), *Rodgers & Hammerstein's Cinderella* (Prince Tophet), *Romeo and Juliet*, *Once*. Regional: World premiere of *Moulin Rouge* (Colonial Theatre) and *Bandstand* (Paper Mill Playhouse). Film: *Mindy Kaling's Late Night* (Sundance World Premiere 2019), *Bandstand Live on Broadway*, *Romeo and Juliet*. Television: Recurring roles on *Ordinary Joe* (NBC), *Five Days At Memorial* (Apple TV+). Guest starring roles on *Evil*, *Blacklist*, *Blue Bloods*, *Pose*, *The Politician*, *The Marvelous Mrs. Maisel*. Training: RADA, BFA University of Michigan. @joe_carrollmich

MELESSIE CLARK (*Lucinda*) is a proud Pittsburgh native and PCLO alum. A graduate of Point Park University with a BFA in Musical Theatre, Melessie has been seen in Pittsburgh CLO's *The Wizard of Oz* (Glinda), *Grease* (Jan), *Rock of Ages* (Waitress #1), *The Wedding Singer* (Crystal/Tina Turner), and *Gypsy* (Ensemble). She would like to thank God, her family and friends for their endless love and support. Instagram: @melessieclark

ALYSSA GIANNETTI (*Rapunzel*) is beyond excited to be performing with Pittsburgh CLO for the first time! Born in Pittsburgh and now based in NYC, she holds a BM in Voice & Opera Performance from Northwestern University. Previous credits: *Love Never Dies* First National Tour (Christine Daaé u/s/Swing), *Unmasked* (Paper Mill Playhouse), *Disney and Cameron Mackintosh's Mary Poppins* (The Muny), *My Way* (Theatre By The Sea), and *SIX* (NCL/Rehearsal Swing). Go Steelers! @agiannetti22



WHO'S WHO - CAST

HALEY HOLMES (*Florinda*) is so grateful to be making their CLO debut alongside this unbelievable cast and crew. Born and raised in Talladega, Alabama, Haley received their BFA in Musical Theatre at Point Park University. Regional: *School of Rock* (Red Mountain Theatre Co.), and *Secret Garden* (Red Mountain Theatre Co.). Catch her in Ethan Coen's new film *Drive Away Dolls* in theaters on September 22nd, 2023. Thank you to Lisa and Stacy for being the strongest and most supportive parents ever. To Zeva and James for guiding my art, and my darling roommates Chloe and Zoe for always believing in me. Insta: @haleynholmes

CHRISTINE LAITTA

(*Cinderella's Stepmother*) a proud local actor, Chris has performed in eight CLO Cabaret shows and her original cabaret TV *Tunes Sing-A-Long*, which is the longest-running original cabaret in Pittsburgh. Last summer, she was seen as the rapping sister, Mary Lazarus, in *Sister Act*. This summer, Chris will be performing in *Into the Woods*, *The Sound of Music*, and *Guys and Dolls*. She is also the director/choreographer of *Off The Record*, Pittsburgh's annual benefit for the food bank. Chris is the co-author of "The Dramatically Different Classroom" (Kagan Publishing) and was awarded the Rob Zellers Award for Excellence in Arts Education. Chris dedicates this season to her mom and husband for their love and support. Thank you Mark and everyone at the CLO who make working here a pure joy.

JHARDON DISHON MILTON (*Rapunzel's Prince*, *Dance Captain*) Pittsburgh CLO Debut! Jhardon was most recently seen playing Jonah in Roundabout Theatre's production of the *bandaged place*. Broadway: *Tina: The Tina Turner Musical* (OBC), *A Bronx Tale*. Off-Broadway: *The Black Clown* (Lincoln Center & a.r.t.), Carnegie Hall (alongside Adrienne Warren). Regional: *Little Shop of Horrors* (Seymour, Tantrum Theatre). TV: *Blue Bloods*, *Harlem*,

& *And Just Like That*. Grateful to God for the gifts. And immense gratitude to Mama, friends, family, and manager Rochel. @jhardondishon

PATTI MURIN (*The Baker's Wife*) is best known for her critically acclaimed turn originating the role of Princess Anna in *Disney's Frozen* on Broadway. Other Broadway/National Tour credits: the title character in *Lysistrata Jones*, flying across the country by bubble as Glinda in *Wicked*, and roller skating to Broadway in *XANADU* (Euterpe). Off-Broadway: *Love's Labour's Lost* (Shakespeare in the Park), *Fly By Night* (Playwrights Horizons), *Lady Be Good!* (Encores!). Almost-Broadway: *Nerds* (Sally). TV: Many Hallmark Channel movies including *In Merry Measure*, *Love On Iceland*, and *Holiday For Heroes*. Recurring roles on *Chicago Med* and *Royal Pains*. Patti is also an audiobook narrator for bestselling authors such as Jodi Picoult, Christina Lauren, and Katherine Center. So much love to Colin, Cecily & Lorelai. @pattimurina

MANU NARAYAN (*The Baker*) Original Broadway Cast: Theo in *Company* (2022 Tony Best Revival of a Musical), Robbie in *Gettin' The Band Back Together*, Karpathy in *My Fair Lady* (LCT), Akaash in *Bombay Dreams* (Drama League nomination). Tour: *Miss Saigon*. Off-Broadway: *A Delicate Balance* (Transport group/ NAATCO), *Merrily We Roll Along* (Roundabout/ Fiasco), *Yeast Nation* (NYFF), *Falsettoland* (NAATCO), *subUrbia* (Second Stage), *Fucking A* (The Public), *The Lisbon Traviata & The Who's Tommy* (Kennedy Center). Film: *Anything's Possible*, *99 homes*, *The Love Guru*, *Last Airbender*, *Cinderella Story: Once Upon a Song*. TV Credits: *And Just Like That*, *Prodigal Son*, *Emergence*, *Bull*, *Blacklist*, *Grey's Anatomy*, *L&O:SVU*. CLO Academy alum! Pittsburgh CLO's 75th Anniversary: *A Broadway Musical Celebration* at Heinz Field. Carnegie Mellon University, BFA. Instagram: @TheManuNarayan



WHO'S WHO - CAST

BRADY D. PATSY (*Cinderella's Father*) is thrilled to be making his Pittsburgh CLO Summer Series debut with *Into the Woods*, *Once On This Island*, and *Guys and Dolls*. He recently returned from Nebraska where he served as the Associate Artistic Director of The Omaha Community Playhouse. Upon return, he toured with Pittsburgh CLO's Gallery of Heroes; *Hero: The Boy From Troy*. Some Regional credits include *RENT* (Tom Collins), *Children of Eden* (Father), *Les Misérables* (Javert), *Footloose* (Rev. Moore), *Cats* (Bustopher Jones/Gus); among others. Try to keep kindness with you, always!

JOE SERAFINI (*Jack*) is thrilled to be returning home to the Pittsburgh CLO stage in one of his favorite musicals of all time. A Pittsburgh native, Joe practically grew up at the CLO Academy, where he first played Jack in their production of *Into the Woods* at the age of 15! As a child actor, he also performed in CLO mainstage shows, including: *A Musical Christmas Carol* (Tiny Tim), *Oliver!* (Oliver Twist), *Les Misérables* (Gavroche), *Peter Pan* (Michael Darling), and *The Sound of Music* (Kurt von Trapp). He currently stars as Seb in *High School Musical: The Musical: The Series* on Disney+. Hi is a proud alum of the University of Michigan Musical Theatre Department. Endless gratitude to his family, friends, teachers and mentors. @joe_serafini_

KYLA STONE (*Cinderella*) recently starred in the National Tour of *Anastasia* as the world's first Black Anya. Regional favorites include *Legally Blonde The Musical* (Elle Woods, The Munny), *The Secret Garden* (Mrs. Shelley & Martha u/s, The Ahmanson), *Sweeney Todd...Fleet Street* (Johanna, Hangar Theatre), and most recently, *The Music Man* (Marian Paroo, Gainesville Orchestra). Lead role in *A Life Within* (Best Actress in A Short Film, Paris Cinema Award). Has starred in the independent shorts, *The Biggest Little* & *The Artemis Game*. Huge thanks to JZ Casting, the ITW team, and her reps in NY. Love to Mom, Conner, and her bird friends.

BFA in Theater Performance (Chapman U) @kylastone

JORDAN TYSON (*Little Red Riding Hood*) can be seen in the Netflix series *The Chair* and film *Vampires Vs. The Bronx*. Recently she performed in the world premiere productions of *Lempicka* at La Jolla Playhouse and *The Notebook* musical at Chicago Shakespeare Theatre. She's also working on her debut EP. jordantyson.com | @curlybroad

GENE WEYGANDT (*Narrator, Mysterious Man*) Most recently seen on Broadway, as well as the Australia company of *Come Frome Away*. Also on Broadway, in *Wicked* (The Wizard of Oz) and *Big: The Musical*. Regional: *The Lifespan of A Fact*, *Old Jews Telling Jokes*, *The Light In The Piazza*, and *Rock of Ages* here at Pittsburgh CLO. Film credits: *The Babe* and *The Birdcage*. TV Credits: *Chicago Med*, *Chicago Fire*, *Empire*, *Cybill*, *Home Improvement*, *Drew Carey*, *Murphy Brown*, *Ellen*, *Boss*.

SALLY WIGGINS (*Giant*) is and will always be a Pittsburgh Icon. Wiggin joined WTAE in 1980, she anchored the 11 p.m. news for 16 years and the 6 p.m. news for 22 years. During her legendary career Wiggin has earned numerous awards including a George Foster Peabody Award, regional Edward R. Murrow Award, a National Headliner Award, and the Board of Governors Award for the Mid-Atlantic Emmys. In 2017, Sally was the 2nd female to be inducted into the Pennsylvania Association of Broadcasters Hall of Fame. In 2018, she was named Heinz History Center History Maker, and in 2019, the Press Club Western Pennsylvania recognized her with the Service Award.

LU ZIELINSKI (*Milky White*) is thrilled to be making her Pittsburgh CLO Summer Series debut! Last season, Lu was one of the female swings in *Puffs* (CLO Cabaret) and had the honor of performing as Megan Jones. Third or nothing!! Following *Into the*



WHO'S WHO - CREATIVE

Woods, Lu will be performing in *Roadl Dahl's Matilda The Musical* (Mrs. Wormwood) at the Forestburgh Playhouse. Thank you to Ian, my family, and the incredible team at PCLO. I am the luckiest woman alive. @itsluzielinski

SCOTT WEINSTEIN (*Director*) is thrilled to return to Pittsburgh CLO where he last directed *Rock of Ages*. Favorite credits include *Ragtime* (Griffin Theatre - Jeff Award); *Something Rotten!* (Marriott Theatre); *South Pacific* (The Rev Theatre), *She Kills Monsters* (Steppenwolf/Buzz22 Chicago), *Million Dollar Quartet* (Village Theatre, Phoenix Theatre and others) and *RENT* (Theo Ubique - Jeff Award). Scott was the Associate and Resident Director for the Broadway National Tour, Las Vegas and Chicago productions of *Million Dollar Quartet* and developed and directed the world premiere/first national tour of *Million Dollar Quartet Christmas*. Graduate of Northwestern University and proud member SDC. He is represented by William Morris Endeavor. www.ScottGWeinstein.com

WILLIAM CARLOS ANGULO

(*Choreographer*) is a dramatist and dancemaker based in New York City. Favorite projects include *La Havana Madrid* (Steppenwolf/Goodman), *Indecent* (Juilliard), *Legally Blonde The Musical* (Muny), and *In The Heights* (Portland Center Stage). He recently created the NextGen Choreography Apprenticeship in partnership with Dance Lab New York where he mentors gifted, young choreographers. He is currently creating two new Broadway musicals: *Hombres* and *Shout Sister Shout*. He is a proud member of Stage Directors and Choreographers Society (SDC) and the Alliance of Latine Theatre Artists (ALTA). Up next: *Little Shop Of Horrors* (Muny) and *Poor Yella Rednecks* (MTC).

JAMES CUNNINGHAM (*Music Director*) has music directed over 15 production for the

CLO summer series since 2017. New York credits include *Avenue Q* (conductor), music director for *Bunnica* (TheaterworksUSA and original cast recording), *Hot Mess In Manhattan* (Araca Project), and *Happy Birthday* (TACT) for which he also provided original music. National Tours credits as pianist and/or conductor include: *Irving Berlin's White Christmas*, *Spamalot*, *Evita* and *Cats*. Other regional credits include productions for Arena Stage, Casa Mañana, North Carolina Theatre, Sharon Playhouse, Shakespeare Theatre Company, The Engeman Theater, Paper Mill Playhouse and The Muny. He is currently on the faculty at Point Park University.

PAUL WONSEK (*Scenic Designer*) has designed over 300 productions in New York and regional theaters. He has been resident designer at the Repertory Theater of St. Louis, the Starlight Theater in Kansas City, the Walnut Street Theater in Philadelphia and the Hudson Guild Theater in New York City. He was also Art Director and Lighting Designer at The Muny in St. Louis, the largest outdoor theater in the United States. He has designed over 100 building and entertainment projects, including the 1996 Summer Olympics, Home Shopping Network, Home Shopping Network Tokyo and Disneyfest Singapore. His church designs include Christ Community Church, Dekalb, IL, Full Gospel Church, New York City and In Touch Ministries with Dr. Charles Stanley. Most recently his film and television credits include ten years as Tyler Perry's Production Designer, with over 600 television credits and such movies as *Nobody's Fool*, *Tyler Perry's Boo 2*, *A Fall From Grace*, and *Tyler Perry's Acrimony*.

PAUL MILLER (*Lighting Designer*) 6th season at PCLO. Broadway: Designed 5, Associate/Assistant on 20 others. Off-Broadway favorites: *Desperate Measures*, *Clinton!*, *Pageant*, *Vanities - the Musical*, *Waiting for Godot*, *Nunsense*, *Encores!* (9). National Tours: *Hairspray*, *Elf*, *The Wizard*



WHO'S WHO - CAST

Paul Miller Bio Continued...

of Oz, Sweeney Todd, The Producers, Rent, Shrek The Musical. Regional: The Old Globe, Dallas Theater Center, Chicago Shakespeare, Idaho Shakespeare, Asolo Rep, ACT, Cleveland Playhouse, Pasadena Playhouse, Goodspeed, and others. Television: *Evil* (CBS & Paramount+), *Live from Lincoln Center*, 23 Netflix specials, *New Year's Eve/Time's Square* (23 years & 100+ performances). International: Stratford, West End, Vienna, Milan (Teatro alla Scala), Brazil, The Philippines, South Africa, Iceland and China.

DUSTIN CROSS (*Costume Designer*) is so happy to be returning to PCLO! Shows designed for Pittsburgh CLO include *Spamilton* and *Kinky Boots*. Off Broadway (Select): *Love Actually* (NY/ Chicago), *The Office* (NY, National Tour) *Forbidden Broadway: The Next Generation*, *Spamilton* (New York, Chicago, Pittsburgh, LA, London, National Tour / Lucille Lortel Nom, Henry Hewes Nom), *The Glass Menagerie*, *A Midsummer Night's Dream*, *Cougar The Musical*, *The Other Josh Cohen*, *Forbidden Broadway: Comes Out Swinging* (NY, National Tour, London) Regional (Select): *Margaritaville**, *From Here to Eternity**, *Heartbreak Hotel**, *Billy Elliot**, *The Witches of Eastwick**, *Grumpy Old Men**, *Joseph, Sister Act**, *Peter and The Starcatcher*, *Ain't Misbehavin'*, *Always*, *Patsy Cline*, **The Prince of Egypt*, **Cinderella* (*regional premiere), *Five Guys Named Moe*, *The Christmas Rose* (Carnegie Hall) *The NY Knicks Dancers* and *The NY JETS Drumline Tour: Dragons Love Tacos*, *Pete The Cat's Hollywood Adventure Film: Celtic Heart* (PBS), *Buttons: A Christmas Tale* (Paramount Pictures, starring Dick Van Dyke and Angela Lansbury) Enjoy! www.dustincrossdesigns.com @dustincrossdesigns

CHRIS EVANS (*Sound Designer*) is a graduate of Carnegie Mellon University (Drama '83). He has been teaching the Advanced Sound System Design course in the School of Drama for the past 7 years and also advises student sound designers who are assigned to musical productions. He has served as the House Sound Engineer at the Benedum Center in Pittsburgh, PA since 1987. During this time he has also designed and engineered shows for the Pittsburgh Opera, Pittsburgh Ballet and the Pittsburgh

CLO. In addition to his professional career in Pittsburgh, he has lectured for the Broadway Sound Master Class Series in New York City and designed sound for the Jimmy Awards at the Minskoff Theater.

JEFF KNAGGS (*Hair and Makeup Designer*) is taking a break from his day job as Senior Manager of Theatrical Costuming for Norwegian Cruise Line Holdings to come back to one of his favorite cities! For NCL he has designed *Kinky Boots*, *Footloose*, *Six*, and *After Midnight*. Royal Caribbean: *Hairspray*, *Flight: Dare to Dream*. *The Silk Road*, *Showgirl!*, *The Effectors*. Pittsburgh CLO: 2017, 2018, 2019, & 2022 Seasons. TUTS: *Memphis*, *Dreamgirls*, *Into the Woods*, *How to Succeed...*, *The Rocky Horror Show*, *Million Dollar Quartet*, *Heathers*, *Mary Poppins*, *Sweet Potato Queens*, *Bonnie & Clyde*, *A Christmas Story*, *Music Man*. Theatre Aspen: *Beautiful*. Regional: *Mamma Mia!*, *Peepshow*, *Young Frankenstein*, *Disney's The Little Mermaid*, *Dancing With The Stars*, *America's Got Talent*, and *Into the Woods* at The Hollywood Bowl.

LISA LEIBERING (*Puppet Designer*) is a freelance theatrical designer/builder, an active member of IATSE Local 787 Wardrobe Union, and an Assistant Professor of Costume Design and Technology at Seton Hill University. She holds a BFA in Puppetry/ Children's Theatre from West Virginia University, an MA in Theatre for Youth from the University of Wisconsin-Madison, and an MFA in Costume Design from the University of Idaho.

JZ CASTING (*Casting*) Geoff Josselson, CSA and Katja Zarolinski, CSA are New York-based casting directors, handling productions for theatre, film and television. Recent work includes productions for Arena Stage, Actors Theatre of Louisville, Baltimore Center Stage, Cape Playhouse, Denver Center, Ensemble Studio Theatre, The Irish Repertory Theatre, Merrimack Rep, Oregon Shakespeare Festival, Paper Mill Playhouse, Pittsburgh CLO, Pittsburgh



WHO'S WHO - CREATIVE

Public Theatre, Repertory Theatre of St. Louis, Round House Theatre, Seattle Repertory Theatre, Theaterworks Hartford, Weston Playhouse. For more information, please visit www.jz-casting.com

JAMES LAPINE (*Book*) is a playwright and director. On Broadway he has worked with Stephen Sondheim on *Sunday in the Park with George*; *Into the Woods*; and *Passion*. He also conceived and directed the musical review *Sondheim on Sondheim*. With William Finn he created *Falsettos* recently revived by Lincoln Center Theater; *Little Miss Sunshine*; *Muscle*; and directed Finn's *The 25th Annual Putnam County Spelling Bee*. Other Broadway credits include his play based on Moss Hart's memoir *Act One* (also LCT), *Amour*, *The Diary of Anne Frank*, *Golden Child*, and *Dirty Blonde*. He has written the plays *Table Settings*, *Twelve Dreams*, *The Moment When*, *Fran's Bed* and *Mrs. Miller Does Her Thing*. Lapine has been nominated for eleven Tony Awards, winning on three occasions. He has also been the recipient of the Pulitzer Prize, SDC's Mr. Abbott Award for Lifetime Achievement in the Theater, and inducted into the Theater Hall of Fame.

STEPHEN SONDHEIM (*Music & Lyrics*) wrote the music and lyrics for *Saturday Night* (1954), *A Funny Thing Happened On The Way To The Forum* (1962), *Anyone Can Whistle* (1964), *Company* (1970), *Follies* (1971), *A Little Night Music* (1973), *The Frogs* (1974), *Pacific Overtures* (1976), *Sweeney Todd... Fleet Street* (1979), *Merrily We Roll Along* (1981), *Sunday In The Park With George* (1984), *Into The Woods* (1987), *Assassins* (1991), *Passion* (1994) and *Road Show* (2008) as well as lyrics for *West Side Story* (1957), *Gypsy* (1959) and *Do I Hear A Waltz?* (1965) and additional lyrics for *Candide* (1973). Anthologies of his work include *Side By Side By Sondheim* (1976), *Marry Me A Little* (1981), *You're Gonna Love Tomorrow* (1983), *Putting It Together* (1993/99) and *Sondheim On Sondheim* (2010). He composed the scores of the films "Stavisky" (1974) and "Reds"

(1981) and songs for "Dick Tracy" (1990) and the television production "Evening Primrose" (1966). His collected lyrics with attendant essays have been published in two volumes: "Finishing the Hat" (2010) and "Look, I Made A Hat" (2011). In 2010 Broadway's Henry Miller's Theatre was renamed The Stephen Sondheim Theatre in his honour; in 2019, London's Queens Theatre was also renamed the Sondheim.

RENÉE RIMLAND (*Production Stage Manager*) is so happy to be back for another wonderful summer at Pittsburgh CLO! Broadway: *Disney's Beauty and the Beast*, *Cabaret*, *Fosse*, *Jekyll & Hyde*, *Steel Pier*. National Tours: *42nd Street*, *Beauty...*, *Les Misérables*, *Joseph ... Dreamcoat*, *The Phantom of the Opera*, *Savion!* *Footnotes*, *Buddy! The Buddy Holly Story*, *Evita*, *Bye Bye Birdie*. PSM for over 12 seasons at PCLO. For JRR, always! Proud AEA member.

KELLY HAYWOOD (*Assistant Stage Manager*) CLO: *A Chorus Line*, *Sister Act*, *In The Heights*, *Peter Pan*, *Mamma Mia!*, *Aida*, *Damn Yankees*, *Shrek The Musical*, *Monty Pythons Spamalot*, *A Musical Christmas Carol* and *42nd Street*. Pittsburgh Public Theater: *Steel Magnolias*, *Slow Food*, *Barefoot in the Park*, *Little Shop of Horrors*, *Born Yesterday*, *Noises Off*, *A Christmas Story* and *True West*. Kelly has also done several productions with the Pittsburgh Opera and Ballet.

PAMELA BRUSOSKI (*Assistant Stage Manager*) has stage managed on and off Broadway for more than 20 years including over 40 shows at Irish Repertory Theatre. Other credits include Carnegie Hall, Lincoln Center, Pittsburgh Public Theater, Pioneer Theatre Company, PICT, York Theatre Company, Primary Stages and New Federal Theatre. MFA in Directing from The City University of New York at Brooklyn College.

MUSIC THEATRE INTERNATIONAL (*Licensing*) is one of the world's leading theatrical licensing agencies, granting



WHO'S WHO - CREATIVE

Music Theatre International Bio Continued...
theatres from around the world the rights to perform the greatest selection of musicals from Broadway and beyond. Founded in 1952 by composer Frank Loesser and orchestrator Don Walker, MTI is a driving force in advancing musical theatre as a vibrant and engaging art form. MTI works directly with the composers, lyricists and book writers of these musicals to provide official scripts, musical materials and dynamic theatrical resources to over 100,000 professional, community and school theatres in the US and in over 150 countries worldwide. MTI is particularly dedicated to educational theatre, and has created special collections to meet the needs of various types of performers and audiences. MTI's Broadway Junior™ shows are 30- and 60-minute musicals for performance by elementary and middle school-aged performers, while MTI's School Editions are musicals annotated for performance by high school students.

MARK FLEISCHER (*Executive Producer*) serves as the artistic and administrative head of the Pittsburgh CLO, one of the nation's largest producers of musical theatre. In addition to producing the CLO's 6-show summer season, Kara Cabaret Series and its annual production of *A Musical Christmas Carol*, Mark's passion for developing new musicals led to the creation of CLO's SPARK Festival initiative to develop new small musicals – a program made possible from the CLO's Next Generation Capital Campaign. Since its creation in 2017, the program has contributed to the development of more than 15 new musicals including the world premieres of *Up and Away* by Kevin Hammonds and Kristin Bair, *Game On* by Marcus Stevens and David Dabbon, *Beyond the Moon* by Joe Domencic and Christina McCann, *The Double-Threat Trio* by Adam Overett and *An Untitled New Play* by Justin Timberlake (co-production with Pittsburgh's City Theatre). Spark has also led to adapting and reducing existing Broadway shows so they can be produced

with smaller casts (*First Date*, *Xanadu*, and *Dirty Rotten Scoundrels*). Prior to joining the CLO, Mark was the Producing Artistic Director of Adirondack Theatre Festival from 2007 – 2014 where he was named Regions Best Artistic Director by Metroland in 2009 and Managing Artistic Director for Plano Repertory Theatre in suburban Dallas from 1993 – 2002. With a passion for new plays and musicals, he has directed readings, residencies and world premiere productions for theatres across the country. He is a Board Member of the National Alliance for Musical Theatre (NAMT) chairing on the organization's Educational Resources Committee and served on its New Musical Festival Committee. Mark is also a member of The Broadway League where he serves on Intra-Industry committee. He has served on grant review panels for both the New York and Texas State Council on the Arts. He has taught acting, theatre history and arts administration courses at SUNY Empire State College, Columbia College, and Collin College. Mark holds a BA in English Literature and Communication Arts from Austin College and an MFA in Directing from the Theatre School at DePaul University.

PITTSBURGH CLO (*Producing Company*) has been a driving force behind the preservation, creation and promotion of live musical theater since 1946. Founded in the years following WWII as a way to bring Pittsburgh together for a community experience, the company has grown to become one of the largest regional musical theater organizations in the country. CLO produces fresh new productions of Broadway classics, as well as its ongoing commitment to develop new musicals of all sizes. The organization's dedication to musical theater extends beyond its six-show summer season at the Benedum Center to year-round programming at the 250-seat Cabaret Theater which saw the world premieres of *Judge Jackie: Disorder in the Court* by Michael Kooman and Christopher Diamond (2014), *Up and Away* by Kevin Hammonds and Kristin Bair (2018), *Game*



WHO'S WHO - CREATIVE

On by David Dabbon and Marcus Stevens (2018) and *The Double-Threat Trio* by Adam Overett (2019), as well as the musical *An Untitled New Play* by Justin Timberlake by Matt Schattz (2021 co-production with City Theatre). To support the development of these small cast musicals the CLO launched the SPARK Festival in 2018 which has developed over 15 new musicals through readings, workshops, and world premiere productions. The company's Gallery of Heroes program has commissioned and produced over 25 world premiere educational musicals designed for in-school presentations integrating musical theatre and classroom science/social studies curriculum. Gallery of Heroes performs in over 100 schools annually. The current GOH show in development about Civil rights icon John Lewis is titled *Hero: The Boy from Troy* by Nambi E. Kelley and Joe Plummer. Outside of Pittsburgh the organization has helped grow the art form through its involvement with 28 Broadway shows (30 Tony Awards®) and in 2014 produced the world premiere of *An American in Paris* on Broadway, where it won 4 Tony Awards® and was the most awarded musical of the 2015 season, and in London's West End. In addition, the company has a commitment to nurturing emerging talent and has been credited with launching the careers of numerous artists such as Billy Porter, Renée Elise Goldsberry, Rob Marshall, Kathleen Marshall, Rob Ashford, Bernadette Peters and Shirley Jones. CLO's extensive education efforts include a university internship program, New Horizons for students with disabilities, and Creative Vision an in-school residency program at underperforming schools. Other ongoing initiatives include the Pittsburgh CLO Academy of Musical Theater, the Construction Center for the Arts, the acclaimed Gene Kelly Awards for Excellence in High School Musical Theater, and the National high School Musical Theatre Awards (The Jimmys) created in partnership with the Nederlander Organization and The

Broadway League. Pittsburgh CLO is the subject of a 2007 film starring Jeff Goldblum titled "PITTSBURGH." pittsburghCLO.org.

PITTSBURGH CLO ACADEMY
**Summer
CAMPS**

FOR YOUR
RISING STAR
AT HOME!

SCAN ME

REGISTER TODAY!
PITTSBURGHCLO.ORG | 412-281-2234



A SPECIAL THANK YOU TO OUR COMMUNITY PARTNERS

DIAMOND CIRCLE



GOLD CIRCLE



A SPECIAL THANK YOU TO OUR COMMUNITY PARTNERS



SILVER CIRCLE



EXECUTIVE PRODUCER'S CIRCLE



TITLE PRODUCERS

DAN AND DEBBY
BOOKER

STEPHEN AND HELEN
HANNA CASEY

THE ESTATE OF
ELEANOR DRAGAN

DOLORES KARA
IMO MICHAEL J. KARA

JOHN KEITH MAITLAND FUND OF
THE PITTSBURGH FOUNDATION/
COMMUNITY FOUNDATION OF
WESTMORELAND COUNTY

KENT AND MARTHA
MCELHATTAN

ROBERT C. MCCARTNEY

LEAD PRODUCERS

JOHN & ELIZABETH
ECKENROD

JOE & KATHY
GUYAUX

BILL & SANDY LAMBERT
IHO OUR DAUGHTERS:
EMILY & KELLY

JIM AND LISA
MCQUADE

MARK & DIANE
MINNAUGH

CAROL H. TILLOTSON
IMO ANNE C. AND
ARTHUR R. HEFREN

AVA WILSON

EXECUTIVE PRODUCERS

HAL AND KIMBERLY
BURCH

JERRY AND BARBARA CHAIT
IHO VAN KAPLAN

JOHN DICK AND TARA
BRANSTAD

JOE & KAREN
DIVITO

GUS AND ANNIE
HANNA ENGEL

MR. AND MRS.
PETER J. GERMAIN

ALEX AND SLOAN
OVERSTROM

EDWARD T. AND
SUZANNE F. KARLOVICH

GLENN &
STEPHANIE TODD



PITTSBURGH CLO DONORS

Pittsburgh CLO thanks its many community partners who have supported the Annual Campaign through June 19, 2023. Their support plays a critical role in helping CLO provide the very best in musical theatre and arts education programs throughout the region.

THE PITTSBURGH CLO IS GRATEFUL FOR THE GENEROUS SUPPORT PROVIDED BY THE PITTSBURGH CULTURAL TRUST

CORPORATE AND FOUNDATION DONORS

CORPORATIONS

DIAMOND CIRCLE \$25,000 AND ABOVE

#1 Cochran (17)
Dollar Bank (22)
Healthcare Realty (8)
Highmark (31)
Howard Hanna Real Estate Services (13)
Omni William Penn Hotel (14)
PNC (69)

GOLD CIRCLE

\$10,000 - \$24,999

Baird (29)
Chubb Group of Insurance Companies (14)
Deloitte, LLP (17)
Delta Air Lines (7)
Educational Opportunities LLC
Giant Eagle, Inc. (19)
KeyBank (12)
Koppers (13)
Pittsburgh Steelers (3)
The Frank E. Rath - Spang & Company Charitable Trust (44)
ReedSmith (17)
UPMC (20)
Williams Coulson Johnson Lloyd Parker & Tedesco, LLC (1)

SILVER CIRCLE

\$5,000 - \$9,999

84 Lumber (3)
Alco Parking (18)
AON (4)
Ernst & Young (26)
Federated Investors Foundation, Inc. (16)
First National Bank
K&L Gates, LLP (16)
KPMG (19)
MSA Safety (57)
TriState Capital Bank (2)

EXECUTIVE PRODUCER'S CIRCLE

\$2,500 - \$4,999

AI Solutions
Champ Printing Company (8)
Enkompas Technology Solutions (1)
Development Dimensions

International (12)
Littler Mendelson, P.C.
Post & Schell (9)
PriceWaterhouseCoopers (8)
Saul Ewing Arnstein & Lehr, LLP (6)
Schneider Downs (22)
Specialty Conduit & Manufacturing
Tudi Mechanical Systems (3)

PRODUCER'S CIRCLE

\$1,000 - \$2,499

Ampco-Pittsburgh Charitable Foundation (30)
Bender Leadership Academy (5)
Confluence Financial Partners (2)
Diamonds by Rothschild (1)
HMM Insurors (19)
Mars Bank (8)
McGrath McCall, P.C. (3)
Sitko Bruno, LLC (4)
Tomayko Group Holdings

THE FOLLOWING HAVE PROVIDED MATCHING GIFTS FOR THEIR EMPLOYEES' CONTRIBUTIONS TO PITTSBURGH CLO:

3M Foundation
AT&T
Aetna Foundation
Argo Group
BNY Mellon
ChevronTexaco
Dell
Dollar Bank
Dominion Foundation
Eaton Corporation
Emerson Electric Company
EQT Foundation
Equitrans Midstream
Google
Highmark, Inc.
IBM Corporation
Koppers, Inc.
Merck
Microsoft Corporation
PNC Foundation
PPG
Thermo Fisher Scientific
United Health Group
Viacom CBS

FOUNDATION SUPPORT

Bozzone Family Foundation
The Jack Buncher Foundation
The Charity Randall Foundation

The Anne L. and George H. Clapp Charitable and Educational Trust
Cooper-Siegel Family Foundation
Edith L. Trees Charitable Trust
Ganassi Foundation
The Grable Foundation
The Heinz Endowments
Irene C. Shea Charitable Foundation
Helen M. Knepper Memorial Fund of The Pittsburgh Foundation/
Community Foundation of Westmoreland County
Massey Charitable Trust
Founders: Harris B. Massey and Doris J. Massey
McKinney Charitable Foundation
Milton G. Hulme Charitable Foundation
W.I. Patterson Charitable Fund
Pauline Pickens Charitable Trust
Richard King Mellon Foundation
Robert and Mary Weisbrod Foundation

GOVERNMENT SUPPORT

Allegheny Regional Asset District
ARP-NEA-Grants to the Arts
Pennsylvania Council on the Arts
Small Business Administration
Shuttered Venue Operators Grant Program

INDIVIDUAL DONORS

GENE KELLY PRODUCERS SOCIETY

TITLE PRODUCERS

\$25,000 AND ABOVE

Dan and Debby Booker (36)
Stephen and Helen Hanna
Casey (32)
The Estate of Eleanor Dragan (16)
Dolores Kara IMO
Michael J. Kara (22)
John Keith Maitland Fund of The Pittsburgh Foundation/
Community Foundation of Westmoreland County (46)
Kent and Martha McElhattan (1)
Robert C. McCartney (42)



PITTSBURGH CLO DONORS

LEAD PRODUCERS

\$15,000 - \$24,999

John & Elizabeth Eckenrod (18)
Joe & Kathy Guyaux (22)
Bill & Sandy Lambert IHO our daughters: Emily & Kelly (24)
Jim and Lisa McQuade (6)
Mark & Diane Minnaugh (19)
Carol H. Tillotson IMO
Anne C. and Arthur R. Hefren (13)
Ava Wilson (7)

EXECUTIVE PRODUCERS

\$10,000 - \$14,999

Hal and Kimberly Burch (7)
Jerry and Barbara Chait IHO
Van Kaplan (6)
John Dick and Tara Branstad (5)
Joe & Karen DiVito (12)
Gus and Annie Hanna Engel (5)
Mr. and Mrs. Peter J. Germain (17)
Alex and Sloan Overstrom
Edward T. and Suzanne F. Karlovich (20)
Glenn & Stephanie Todd (8)

PRODUCING DIRECTORS

\$5,000 - \$9,999

William P. Anderson (23)
Bellin/Coontz Family Giving Fund (5)
Elaine M. Bellin and Phyllis D. Coontz IHO Patty Maloney (5)
Mrs. Patti Matty Blenko IMO
Walter Blenko (41)
Laurel Dagnon and Patricia Jarrett (9)
Jeff and Lesley Evancho (3)
Patrick A. Gray (3)
Emilie Hammerstein (1)
Vicki C. Henn (6)
Michael and Evonne Henry (5)
Deedra Kay (6)
Laura Penrod Kronk (2)
Cate Linn (6)
Nicholas and Anne Liparulo (11)
Mr. Allyn J. Lynch (11)
The Malandro Family (5)
Tim McVay and David Bush (5)
Mr. and Mrs. Alexander Overstorm (3)
Robert and Christine Pietrandrea (8)
Luke and Allison Sizemore (9)
Arlene & Barry Sokolow
IMO Anna & Nicholas Zelkovic (21)
Specialty Conduit & Manufacturing, LLC (11)
Justice Debra and Stephan Todd (15)
Dennis and Diane Unkovic (15)
Travis and Nikki Viglione Williams (8)
James R. Wiltman (18)

PRODUCERS

\$3,000 - \$4,999

Anonymous
Pritam and Binu Advani (6)
Richard & Mary Ellen Anzaldi (2)
Dr. Vitasta Bazaz-Sheen Sehgal - Fund IMO Dr. Kuldeep Sehgal of The Pittsburgh Foundation (20)
Stephen and Dana Bloomburg (10)
Bryan and Cindy Cipoletti (2)
George and Ada Davidson (39)
Phyllis and Tom Davidson (2)
Jerry and Mimi Davis (16)
Joan Clark Davis (26)
Jane & Michael Dixon
IMO Cheryl Young (24)
Mr. and Mrs. Richard Dougherty (7)
Melinda and James Edwards (8)
Cathy and Randy Emanuelson (4)
Jeff and Jennifer Erdely (2)
Kim & Curt Fleming (23)
Dr. Edward L. Foley (25)
David and Deborah Freeman (11)
George and Daphna Gans (7)
Mr. & Mrs. Robert A. Harlan (21)
Leon Hoffman (1)
Tom & Chris Kobus (27)
Irwin and Cher Kotovsky (2)
Dr. Diane Beynon Landers (9)
The Kubica Family (4)
John and Lisa Lemmex (6)
Raymond & Karen Love (21)
John & Cathy Mary (12)
Michael and Wanda McGarry (8)
Janice and Ernie Meade (9)
James Mims (1)
Ed and Deb Moretti (6)
Kari Murphy (1)
Laurie Burkhart Mushinsky (20)
Jordan and Laura Nicholas (6)
The O'Laughlin Family Charitable Fund (22)
Leah and Paul Ohodnicki (9)
Bob Powell (3)
Roseann Rosnick (3)
Jim and Linda Rumbaugh (2)
Julie Sieger and George Johnson (3)
Walter L. Startzel
IMO Mark Fleischer (14)
Gary and Debbie Truitt (20)
Melissa Ungar (12)
Mr. & Mrs. William H. Van Duzer (25)
Tom and Lynne VanHimbergen (3)
Mr. & Mrs. W. Robert Wells (35)
Dr. Audrey Zelkovic
IMO Anna & Nicholas Zelkovic (10)
Tim & Linda Zimmerman (35)

ASSOCIATE PRODUCERS

\$1,500 - \$2,999

Anonymous
Jen Bohland-Anhalt & Joshua Anhalt (13)
Michele and Pat Atkins (2)
Meghan and Jose Barrera (10)
Joyce Bender (8)
Anthony Benevento (1)
Paul E. Block (21)
Beatrice Bonfiglio
IMO Alfred Bonfiglio (26)
James P. Cassaro (3)
Adam and Patricia Davidson (19)
Stacy and Christopher Dee (11)
Kristen Dettlinger (1)
Patrick and Mary Lynn Dugan (6)
Wyne Rooney Fedele
IMO George W. Rooney, Jr. (14)
Holly and Mark Fleischer (3)
Warren R. Fugate (4)
Mrs. Lori Giordano-Bosiljevack (2)
Charlie and Patricia Gray
IMO the administrative and production staffs (33)
Richard S. Hamilton Foundation (21)
George and Rita Hathaway (2)
Paul and Colleen Hennigan (2)
Leslie Hyde (4)
Margaret S. Izzo
IMO Todd Izzo (3)
Van Kaplan and MJ Brennan (8)
Greg and Debbie Knowles (8)
In loving memory of Dr. Susan Cohen (from Christy and Aaron Kolko) (4)
Angela and Scott Langill (1)
Lucia Lazzara-Goodrich (4)
Fred and JoEllen Leech (9)
Richard and Lynn Lipovich (8)
Margaret A. McLean and Stanley Yorsz (17)
Scott & Jennifer Neill (19)
Randall Olson (10)
Paul and Paula Palmer
IMO Charlie Gray and Van Kaplan (20)
Jean Marie Perry (9)
William Perry (3)
Georgiana & Bob Riley (5)
Susie and Jerry Robinson (23)
Lori Ann Rushie (2)
Eric and Michele Schaffer (17)
Ken and Toni Senatore (31)
George and Helen Spalaris (11)
Mark and Tammy Steele (26)
Sterling Family Fund of The Pittsburgh Foundation (10)
Marcia and Louis Swartz (7)
Betsy and Tom Teti
IMO Charles and Anne Lynn (25)
LaShawnda A. Thomas (1)
Joann L. Tissue (9)



PITTSBURGH CLO DONORS

ASSOCIATE

PRODUCERS CONT'D...

Elizabeth Toole
IMO Mrs. Michael Kutsenkow (4)
Carla J. Vrsansky, Esq. (18)
Mr. & Mrs. Richard J. Voller (36)
Melvin Washington (3)
Greg and Lori Weimer (1)
Mr. & Mrs. W. Robert Wells (35)
Bob Williams (22)
J. Dennis Wilson (6)

PATRONS

\$500 - \$1,499

Anonymous
Anonymous
IHO Dan and Debby Booker (3)
Kathryn and James Bann (9)
Dr. and Mrs. Ivan Baumwell (11)
Mrs. Phyllis Bertok and
Mr. Rich Lopretto (10)
George Bielich (7)
Michael and Carol Bleier (20)
Charles & Shelly Bossong
IMO Charlotte (24)
Debbie and Jim Boughner (4)
Jim and Kristin Brennan (10)
Ellen Carabin (13)
Mrs. Roland (Nanette)
Catarinella (64)
Heather M. Chappars (13)
Tom and Dale Christopher (20)
William and Jennifer Chufo (3)
Jen and Mike Dodge (5)
Merrill and Theresa Druggs (19)
Carl Dudeck, Jr. (14)
Theresa B. Fedio (24)
Jeffry & Karen Fink (27)
Galatis Family (3)
Alvaro and Sandra
Garcia-Tunon (17)
Amanda Godley and
Ken Fisher (2)
Flyspace Productions (1)
Rev. Dr. James R. Gretz (37)
Richard and Ruth Ann Hess (56)
MAC and George Hoover (5)
The Howe Family (3)
Jeff Irwin, D.D.S (36)
Thomas R. Johnson
IHO Joe Jackson (7)
Mary Kellam
IMO Robert C. Milsom (5)
Briana and Jeff Kent (2)
Arthur Kerr (42)
Kimberly Kifer
IMO Angelo Joseph Hardi (6)
Dusty Elias Kirk
IHO Dan Booker and
Helen Hanna Casey (1)
Diana M. Kobus (4)
Angela M. Kokovich (4)
The J & MA Krolkowski Fund (11)
Jeff and Rachel Lizik (8)

Lewis and Megan Lloyd (1)
Brandon Marzke (1)
Jamie McGovern (2)
Dr. & Mrs. Brendan McGuire (6)
Richard and Nancy McKnight (34)
Catherine Mechling (26)
Mrs. Joan Milsom (20)
Marcia S. Morton (49)
Jeff & Patty Nayhouse (22)
Mr. & Mrs. Richard L. Neish (12)
Mr. and Mrs. James O'Neill (24)
Todd and M'Lisa Oravitz (4)
Christina O'Toole
IMO Paul & Helen Triko (12)
Tara and Eric Park (8)
Steven and Helen Patricia (15)
The Pollon Family
IMO Vanessa Candreva (19)
Christopher and Mary Rawson (9)
Harold and Leslie Reidenbaugh (2)
Dr. Keith & Celeste Reisinger (8)
Leslie and Peter Robinson (17)
Giulia Robyn (4)
Michael and Mary Ross (2)
Iva and Gene Saraceni
IMO our daughter,
Elyse Jeanne Saraceni (13)
Susan Sargent (8)
Clyde Schmertz (5)
Mr. & Mrs. James C. Stalder (6)
Randi L. Starr (7)
Richard and Linda Stringert (12)
The Stoffel Family
IMO Dale Stoffel (10)
Gayle Tissue and
Yiannis Kaloyeropoulos (1)
Charles and Sue Turner (32)
Sally Wade (36)
Reverend Thomas A. Wagner (29)
Michael and Lisa Walsh (21)
Ramona Ward (2)
Mr. and Mrs. Thomas E. Wash (16)
Mr. and Mrs. Robert W.
Wickerham (33)
Julie Wiles (9)
Matt Williams
Judy Wolfe (2)
Patti and Randy Wynkoop (14)
The David Zeve Fdn of the Jewish
Community Fdn of Greater Pgh
IHO Helen Hanna Casey (1)

Courtney Barthelemy
IHO Brett and
Honour Barthelemy (3)
The Bartosh Family (6)
Dr. Sheila Bigelow, D.O.
and Family (5)
Joan Margaret Blasinsky (13)
Robert C. Blough, Jr. (6)
Pamela Bolkovac (10)
Mr. Edward E. Clever
IMO Barbara J. Clever (14)
Tom, Liz & Shannen Cloherly (2)
Michele Rone Cooper (17)
Tony Cortazzo and
Sara Louik Gluzman (1)
Kristen Dettlinger (1)
Elizabeth Dietrich
IMO Lexi Patterson (1)
James and Theresa Doerfler (19)
Steven Doerfler (5)
John Dreistadt (2)
Natalie Earls (4)
Elliot Counseling (1)
Dr. Peggy Farrah
IMO brothers, Sonny &
Bobby Farrah (13)
Margaret Figgins
IMO David F. Figgins (43)
Mr. and Mrs. Edward
Fortwangler (12)
Christopher Fox and
Shaun Tomaszewski (6)
Katherine and John Freed (14)
Gary and Michele Gatto (1)
The Clem Gigliotti Jr. Family (14)
Cheri and Kevin Gmitter (6)
Mr. & Mrs. Kurt Gottschalk (18)
David Gotwald & Peter Frazen (1)
Cyndy Graves (10)
Mr. and Mrs. William Greb (8)
Joann and Anthony Grieco (17)
Carol Sikov Gross (11)
David Hammerstein (1)
Amanda Colleen Harris (9)
Robert D. Harrison (5)
Andrew and Darlene Hasley (2)
Dr. Linda Haynes (11)
Amy and Paul Hoback (8)
Mt. Lebanon Community
Foundation's Dr. David &
Louise Horvath Family
Fund (5)
Mr. and Mrs. Ben Andrew Huber (3)
Lawrence R. John, M.D. (8)
Craig and Debbie Johnson (6)
Diane Johnson (7)
Russell W. Johnson
IMO Eileen B. Johnson (3)
Mr. and Mrs. William B. Kent
IMO Peggy Paul (8)
Roy and Lori Kern (4)
Gary and Betty Kessler (13)
MaryAnn & Bill King (23)
Maria Kovacs (8)
Stephanie Krick (11)

SPONSORS

\$250 - \$499

Anonymous
Anonymous
IMO Mary Helen Fuhrer
and Frank Fuhrer
Dr. & Mrs. Lee Agostini (31)
Joann S. Anderson (14)
Nancy Arshoun (4)
Mary and Len Bach (9)
David Balint
IHO Kevin McMahon (1)

PITTSBURGH CLO DONORS



Joan E. Lavery
IMO John P. Lavery (24)
Mr. and Mrs. Shawn Leifheit (11)
David M. and Joyce E. Lipkin (9)
Jennifer Long (3)
Tricia and Johanna Loughran (3)
Tracy Lunt (1)
Mr. & Mrs. Robert Madar (21)
Richard Marciniak (17)
Dr. and Mrs. James McCann (13)
Mr. and Mrs. Samuel McClure (11)
Michael and Jacqueline
McConnell (13)
Lee and Michele McCracken (6)
Dr. Graham and
Elizabeth McIntosh (6)
Mr. and Mrs. Robert McMahon
IMO Bill and Norma Dinsmore
& Ruth McMahon (16)
Mary Ann and Terry Mohr (11)
Carroll and David Morrison (10)
Ms. Bonita Mullaugh (11)
The Murray Family (9)
Tim and Carol Murray (7)
Amy and Mike Nerone (2)
David & June Nimick (26)
William and Audia Otto (14)
Carol Patrick (9)
Jim and Maria Pieffer (21)
Warren and Sharlene Purring (10)
Jeffrey Hertweck and
Christine Prince
IMO Mary Ann Hertweck (4)
Edward and Anna Marie Rice (19)
Mona and Bob Riordan (28)
Mr. and Mrs. Byron W. Rosener III (13)
Mrs. John M. Sadler (11)
Paul Schamer (9)
Carl W. Schultz (5)
Emily Busse Schwartz
IMO John and Maggie Busse (2)
Mary Seghi (24)
Victoria and David Serafini (18)
Vincent J. Siciliano
IMO John A. Siciliano (38)
Sal and Maria Sirabella (25)
Ira and Lucy Snyder
IHO Allan Snyder (7)
Susanne and Ron Sommer (11)
Kathy and Alan Stehman (11)
Mr. and Mrs. David R. Steinberg (23)
Richard Stewart (4)
Cait and Spencer Sturgeon (2)
Mitchell Taback
IMO Barbara Taback and
George Rooney (5)
Bob and Brenda Tate (13)
Wayne Vincent Thompson (2)
Reverend James R. Torquato (13)
David M. Turrentine
IMO Shirley M. Turrentine (11)
Joseph & Bernadette Valero (7)
Becky and Jim Vesely
IHO Scarlett Vesely (5)
Mary Lee and Chuck Wetmore (7)

Henry and Rosemarie Wetzel (9)
Michael and Shelby Wherry (6)
Dick and Margaret White (17)
Nancy and Will Willems (11)
Dr. John & Valerie Williams (3)
Mr. John C. Williams, Jr. (27)
Shirley Wilson (16)
Tom Wyse, Jr. and
Robert A. Neft (27)

LIMELIGHTERS

\$100 - \$249

Anonymous
Anonymous
IMO Richard S. Mowl Jr.
A. L. Abramovitz (9)
Forbes and Kathryn Adams (1)
John Aiello (7)
Ted and Donna Alexovich (7)
Elizabeth R. Amber
IMO Wayne Amber & James
Emswiller, CAS (10)
Michael and Karen Amrhein (4)
Charles and Veronica Anchors (12)
Kristen Anderson (1)
Mr. & Mrs. Richard F. Andracki (7)
Pamela Andreyko (1)
Jere and Rozan Antonetti (14)
Sandy Artzberger (4)
James R. Atwell (9)
George W. Ayres
IMO Joyce Davis Smith (6)
Cliff and Susanne Baker (7)
Heidi G. Balas (1)
Debra Baldesberger (9)
Marlynn Baldo (3)
Leroy and Ginger Ball (3)
Robert Banos (3)
Mr. and Mrs. Richard Barnabei (1)
Mr. Gerald Bartolomucci (5)
Bob and Megan Bashaw (1)
Cissy Bassett (3)
Robert Bates (4)
Diane Berquist
IMO Michael J. Berquist, Esq. (5)
Beth and Mike Berrigan (1)
Lisa Black (1)
Mr. David Blackmore (19)
David A. Blauch (2)
Weia Boelema & Ken Manders
IMO Jeanne Manders (14)
W. Dennis and Penny Bossick (1)
Michael and Maxine Botti
IHO Mike Botti (6)
Kathleen Boykin (33)
Scott Branvold and
Lynda Davidson (11)
David and Karen Brienza (6)
Trish Breuer (1)
The Brown Family (3)
Mary Patricia Brown (15)
Mr. and Mrs. Steve Brown (2)
Kirsten Bruder
IMO Alice and Kurt Kerner (1)

Mr. and Mrs. Edward E.
Brunins (8)
David Dean Brzozowski
IMO Victoria Brzozowski (3)
David and Sonya Buerger (7)
Harold B. Burech (2)
Gary and Joyce Butler (4)
Tony and Vicki Caldwell (2)
Dean Caliguire (2)
Mr. Russ Carley (1)
Dan and Doreen Casey (8)
Raymond W. Castle (1)
Helen Cestra (1)
Larry and Debra Chafin (3)
Marie Charles
IMO Carolyn Marie Tady (5)
Frank and Theresa Cicci (3)
Gary and Jo Ann Claus (30)
Carolyn Clevenger (11)
Nat and Diane Cohen
IHO Jim Mercer (18)
Scott Colbert (1)
Joy Cone Company
IMO Joseph George (16)
Mr. and Mrs. James J. Conte (2)
Dr. and Mrs. Joseph G. Coroso (23)
Raymond Cotter (2)
Edward Crawford (1)
Fred and Joy Cullen (10)
Janet Cummings (16)
Richard and Suzanne Currie (5)
Bill and Sue Cutri Fund of the
Pittsburgh Foundation (3)
Mrs. Mary Lou D'Ambrosio
IMO Lynn Vuocolo (2)
Catherine M. Daily
IMO Hazel P. Daily (27)
Stacey Daily
IMO John Daily (1)
George and Kathleen Daniels (6)
Matt and Paula Davey (4)
Christopher and
NancyEllen de Fiebre (6)
Cassie and Susan DeBacco (1)
Dr. and Mrs. Tim DeBiasse (11)
Alice DeCaria (2)
Michael DeKlavan (2)
Diane Deluca (2)
Sara and Joe DeLucia (4)
Edward H. DePasquale
IMO Henry DePasquale (5)
Abby DeRiggi (1)
Ronald Dewalt and Kevin Zadeh (8)
Peter and Melba Dibble (3)
Mike and Mary Lynne Dishaw (2)
Nick and Michele Ditullio (7)
Ann Dixon (9)
Beth Ann Docherty
IMO Janet M. Docherty (9)
John Dreistadt (3)
Jeanne Drennan (2)
Mr. Paul S. Drost (22)
Mr. and Mrs. Patrick Dunphy (27)
Michael and Peggy Dvorznak (1)



PITTSBURGH CLO DONORS

- Howard and Jan Engelberg
IHO Joan and Sam Kamlin (4)
Mike & Margie Evans (9)
Frank and Lisa Falcione (2)
Family House friends - Anne,
Beth, Chuck and Sally
IMO George Rooney (1)
Mark and Carolyn Farabaugh (11)
Suzanne Faris (6)
Jacqueline Fennell (3)
Adrian and Geri Fenton (10)
Bob and Amy Ference
IMO Marie Ference (4)
Armand Ferrara (3)
Emily Ferri
IMO Edward and Carole Ferri (35)
Susan Fertig (2)
Kristian Feterik (3)
Mark and Linda Fialkovich (11)
Dighton and Patricia Fiddner
IMO John Sitton (1)
Mr. and Mrs. Robert Fiedler (12)
Tom and Sue Finegan (7)
Shelley and Don Fink (6)
Sarah Finney (3)
Jim and Paula Fiorucci
IMO Carol Fiorucci (17)
Mr. & Mrs. William Flanagan (7)
Amber Flevaris and
Johnathan Roppo (3)
Mike Flowers & Diane Jefchak (5)
Tina and Christopher Flowers
IMO Spenser Flowers (11)
5 Js (16)
Mr. Gene S. Forsythe (12)
Mr. & Mrs. Paul K. Fox (30)
Francioni Families
IMO George Rooney (1)
Kenneth T. Frankenbery (11)
John and Susan Frantz (1)
Friedlander Family (9)
Linda Froehlich
IMO Richard D. Froehlich (3)
froggy (2)
Michael D. Gaber (1)
Henry Galaska (2)
Ben and Michelle Gallagher (2)
John and Sandy Gandolfi (3)
Judy Garcia (4)
Shirley Gaudette (1)
Mr. and Mrs. Gerard Gastonguay (6)
Damian and Hayah George (8)
Mr. and Mrs. William D. Ghrist III (20)
Amy Gilliland (2)
Meryle Gitto (2)
Cheri and Kevin Gmitter (7)
Melissa Goodfriend
IMO Jeremy Dentel (4)
Tom and Cathy Gothie (18)
Stephen Graf (6)
Gregory Granger (1)
Jason Gray (5)
John Greenlee
IMO Eleanor S. Greenlee (3)
Eddie Grimes IMO Greg Triko (8)
Vanessa Guenther (1)
Mark M. Gudalis (5)
Teresa Mrozoski Halbedl (2)
Denise Hampson (3)
Ms. Paula Heil (6)
Randall and Barbara Henry (4)
Betty Hess
IMO Darrell Hess (18)
Karen Hessel (1)
Diane C. Hildenbrand (3)
Mary and Leo Hitt (4)
Janice L. Hixson (6)
Diane Hoak (2)
Lois M. Hoffman
IMO Mr. and Mrs. Edward
Hoffman (21)
Pauline and Joan Hoffman (7)
Daniel and Vicki Holthaus (11)
Larry and Denise Hoover (13)
Christina E. Horton (5)
Brian Horvath (5)
Joanne Horvatic (1)
Mr. Bruce Hostler (14)
Charles Hunnell (21)
Mr. and Mrs. Patrick J. Hurley (20)
Camille Huzzard
IHO her musical-loving
daughter, Emma (2)
Thomas Isaac (2)
Mr. and Mrs. Ronald E. Johnson (9)
Dr. & Mrs. Robert T. Jones, Jr. (35)
Ms. Sherdina Jones (6)
Alyson and Michael Joyce (1)
Elaine Kaczmarek
IMO Dorothy Procupp and
Joanne Readshaw (20)
Jim and Cheryl Kassner (3)
Thomas and Michelle Kearns (4)
Sue A. Kelly (1)
John and Nita Kellum (2)
Mrs. Joseph Kenney (19)
Arthur Kerr (43)
Dr. Gloria Kerr
IHO Trevor Runco (9)
Debra and Jack King (13)
Michael and Pamela King (1)
James R. Kirsch
IMO Audrey K. Kirsch (13)
Dr. and Mrs. Andy Kiser (2)
Lynn and Milton Klein (3)
Diane Knechtel (20)
Dr. Stephanie Kobil (27)
Christy Kobus (10)
Patty Kokel (1)
Lou M. Kramer, Jr.
IMO Louis Kramer, Sr. (10)
Shawn and Judith Kramer (5)
Mac and Eileen Kravitz (16)
Margaret and Dan Lackey (6)
Joan Lacomis (3)
Paul and Leigh Laird
IMO George Rooney (1)
Kathleen Lamb (17)
Emily Lambert (1)
Debra Larison (19)
Mr. & Mrs. Irving J. Latterman (38)
Jeff and Amanda Laubenthal
IMO Ronald Yant (1)
Marco Leal and Ana Plaminha (2)
Neil and Sharon LeJeune (10)
Linda Leonhardt (1)
Dirk M. Lesnett (1)
Marguerite Lesniak (2)
Leslie and Rich Levine (4)
Jonathan Levinson (1)
Mr. and Mrs. Craig C. Linner (2)
Jerry Lippiatt (4)
Margery J. Loevner (4)
Angela J. Longo (9)
Kellie Loudin (5)
Kate Loy (3)
Jeff and Dr. Jae Luck (4)
Ronald & Christine Lunardi (23)
Robert Luttner (1)
Sloan Mackey
IMO Dennis Wilson (1)
Thomas Majeski (2)
Carole Malik and
Marlene Campas (2)
Mr. & Mrs. Gregory D. Maloney (29)
Marianne Maloney (2)
Kay Manecke (9)
Patricia Manni
IHO Regina Manni (2)
Kelly Manning (1)
Carol Manspeaker (1)
Janet K. Manuel (15)
Fred Maradei and
William Gedman (3)
Elizabeth Marshall (4)
Jenny and Roger Matz,
IMO Dr. and Mrs. A. J. Niehaus
& Gregory Matz (4)
David Maxwell (35)
Paul C. McBeth, III (3)
Larry and Michaelene
McCahan (31)
Ms. Sharon L. McCarl (11)
Mrs. Neva McClymonds
IMO John McClymonds (9)
Bernice McCort
IMO Robert McCort (13)
Karen McCrary (2)
Mark and Patricia McGinley (4)
Skip McGreevy
IMO Teresa McGreevy (15)
Heidi L. McMichael (1)
Paul and Melissa McLane (4)
Adnana Mehic (7)
Mr. and Mrs. Daniel Meier
and Family (6)
Bernadette Meyers (4)
Robert and Lynn Mialki (7)
Dr. Paul and Linda Mihalek (15)
Joseph and Gina Milcoff (5)
DJ and Val Miller (1)
Emily Lynne Miller (1)
Laurie Miller (11)
Stefanie Morosky & Clinton Kelly (4)
Kathleen Morouse (2)

PITTSBURGH CLO DONORS



Miriam & Todd Moules (17)
Robert & Diane Murphy (13)
Madeline M. Napoli
 IMO Robert Napoli (19)
Mr. & Mrs. Robert G. Naugle (4)
Richard Neff (2)
Suzanne S. Newpher
 IMO Rev. Robert J. Newpher (9)
William Nimick (4)
William Noel (3)
Kimberly Noonan (4)
Mrs. Audrey Novak (15)
Dan and Lisa Nydick (16)
Alice Oakes (5)
Nancy O'Dell
 IMO Hellen Lee Henderson (1)
Cathy Opsitnick (13)
Thomas M. Pakula (1)
Ed & Lisa Palombo (7)
Charles and Betty Paoletti (4)
Barbara Patton (2)
Jo-Ann Paulenda (7)
Ms. Lynley Pavkovich (5)
Kathy & John Pechunka (15)
Rose M. Perryman (22)
Vincent Petrocelli
 IMO Carole L. Petrocelli (17)
Jennifer L. Pfister (2)
Mark F. Piedmonte (5)
Paul S. Pieffer and
 Janice Hlad-Pieffer (15)
Mr. and Mrs. Stephen F.
 Piskurich (25)
Mr. & Mrs. Donald J. Platt (26)
Cindy & John Pokora
 IMO Lil Sciulli (12)
Kathy Jo Pollack (18)
Duane and Bernadette
 Ponko, CPA (14)
Barry B. Premoshis (22)
Pamela R. Prisk (1)
Barbara Provenzano (18)
Jim and Maura Puchany (4)
Quality Repair Services, LLC (10)
Bridget Quinlan (2)
Sue Quinn (4)
John Ranalli (1)
Joshua and Brielle Reicks (4)
Pam Reiger and John Emry (8)
Donna Repka
 IMO Michael Carasella (24)
Edward M. Reppa, Jr. (16)
George Reuss (8)
Mr. & Mrs. Frank Ricco Jr. (13)
Carol Richardson
 IMO Josephine M. Schmitt (6)
David and Sylvie Rigdon (5)
John Roach (2)
Gary and Cookie Roberson (2)
Sally Roddy - The Voice Studio (8)
Kristen Rohr (1)
John and Joni Roland (13)
Al Rose
 IMO Diane Rose (16)

Bobbi Jo Rosol (2)
Janis Rossetti (1)
Don & Mary Rugh (20)
Mr. and Mrs. Jeffrey Rutledge (6)
Lana Saksun (2)
Frank and Denise Salopek (8)
Jen and Jeff Sarabok
 IMO Ginny Sarabok (2)
Lisa Scales (1)
Dianne Scansaroli (9)
Mark Scappe (5)
Mr. and Mrs. Daniel C. Schetley (10)
John C. Schlotterer (4)
Penny Schnarrs and
 Melissa Tavarez MD (3)
Edward R. Schneider (3)
Mary C. Sellers (1)
Tina M. Senules (12)
Victoria and David Serafini (19)
Brian Sergi-Curfman (1)
Steve and Linda Sesack (1)
Karen Seyler (1)
Madalaine T. Shigle
 IMO Therese "Grammy" Sciulli (4)
Taitia Shelow (3)
Mark and Susan Shopland (4)
Ronald and Linda Siegel (2)
Rhoda F. Sikov
 IMO Seymour A. Sikov (27)
Mr. and Mrs. G. David Sivak (3)
Amy Skena
 IMO Joseph Dennis Wilson (1)
Jacob and Rula Skezas (9)
Gary Sladick (1)
Bob and Chris Sloboda (8)
Charles and Ruth Smith (8)
Ruth Snyder (1)
Tom and Karen Sochacki (2)
Susan Sorbo (11)
Deanna and Matthew Speranza (1)
Daniela Spitzer (6)
Mr. & Mrs. Marlis Stacy (9)
Jennifer Stanton
 IMO Mary Donaldson (3)
Carol M. Stein (18)
Mr. & Mrs. Gregory A. Stein (35)
Rona & Gary Sterling (22)
Joe Stevens (8)
Jenny and Kelly Stewart (6)
Troy and Julie Stiffler (1)
Mr. and Mrs. George S.
 Stipetich (2)
Dennis and Allison Stombaugh (6)
David Stutzman (5)
Janet L. Templer
 IMO Carol R. McAuley (23)
Dick and Jana Thomas (21)
Mr. and Mrs. Willard J.
 Tillotson, Jr. (2)
Karen F. Tissue
 IMO Lillian Cisek (8)
Mr. & Mrs. Regis Tomsey (25)
James and Elizabeth Toole (1)

The Toth Family
 IMO Amanda MacDonald Leech
 Jeanne Treasurer (2)
Martin Trettel (1)
George and Pia Trew (13)
Nancy and Gary Tuckfelt (2)
Scott Turnbull (1)
Catherine Turner (24)
Keith and Carol Unidas (2)
James and Dorothy Valimont (10)
Matt Vanek (1)
Jane A. Vaselenak (4)
Mr. and Mrs. Anthony L. Venci
 IMO Eleanor and Douglas
 Naylor (6)
Matt and Anne Veres (4)
Bruce Vermeychuk (1)
Marilyn and Joseph Vettorazzi (9)
Jennifer Fulmer Vinson
 IMO Marilouise "Mel" Michel (3)
Nancy Vrabel (10)
Dan and Lee Ann Wahl (4)
Leslie James Ward (9)
Christine Washington (1)
Warren & Shirley Wenner (7)
Patricia Wensyel (1)
Karen and Fred Wheeler Jr. (2)
Peggy C. Whitehurst (7)
Pete and Jean Wicks (17)
H. Wayne and Joyce A. Wiester (28)
Donna Wilson & Stephen Spargo
 IMO Lorraine DeWitt &
 IMO Gloria Spargo (2)
Mr. David E. Winklmann (8)
Janice Wirth (13)
Denise Wolbert (1)
Linda Wright (16)
Morgan Yates IMO M. L. Reed (3)
Joseph Yuhasz (3)
Penny Zacharias and Kirk Burkley (3)
Ronald & Deborah Zanetti
 IMO Mary Hartnett (1)
Lisa and Erik Zettelmayer (1)
Nina Zetty (2)
Dr. Paulina F. Zunino (5)
Susan Stanish Zurawsky (2)

PITTSBURGH CLO WOULD LIKE TO THANK AND RECOGNIZE THE FOLLOWING MEMBERS OF THE LEGACY LEGENDS SOCIETY:

Paul Block
Jim Gretz
Robert C. McCartney
Paul and Paula Palmer
Jeffrey Lawrence Pollock Esq.
Sally Wade

For more information on the Legacy Legends Planning Giving Program, please visit our website at PittsburghCLO.org



PITTSBURGH CLO DONORS

Pittsburgh CLO thanks the CLO Ambassadors for their generous support of the CLO Performance Season and CLO's Education and Community Engagement Programs.

IMO: In Memory Of

IHO: In Honor Of

(): Number of Years

Listing is complete as of 06/19/23. Every attempt is made to ensure that listings are correct, but if there are errors or omissions, please contact the CLO Development Office at 412-281-3973, ext. 4. To become a Pittsburgh CLO donor, please visit us online at pittsburghCLO.org, or send your contribution to:

Pittsburgh CLO
Development Office
719 Liberty Avenue
Pittsburgh, PA 15222



Pittsburgh CLO

CELEBRATING MUSICAL THEATER

LEGACY LEGENDS

Pittsburgh CLO has introduced the CLO LEGACY LEGENDS to recognize the dedicated supporters who share a vision for Pittsburgh CLO's future. Their bequests and other planned gifts will have a profound and lasting impact on the artistic quality of the work you see on our stages.

If you would like to join us in building that future, please consider becoming a CLO LEGACY LEGEND by naming Pittsburgh CLO as a beneficiary of your will or trust, IRA or other retirement plan, life insurance policy, life income, or other planned gift. Designating Pittsburgh CLO is not a complicated process and can often be done with phone call to your investment adviser.

If you have already named CLO in your estate plans – let us know and we will add your name to our CLO LEGACY LEGENDS and include you in special recognition and benefits.

For more information, please contact Wynne Fedele, Director of Development at wfedele@pittsburghCLO.org or call 412-281-3973 x232.



THANK YOU

The CLO Gallery of Heroes in-school program is sponsored by The National Endowment for the Arts, Highmark Blue Cross Blue Shield, The Massey Charitable Trust, The Pittsburgh Foundation, Allegheny Foundation, Healthcare Trust of America, Inc., Cooper-Siegel Family Foundation, Laurel Foundation and UPMC.

The Gene Kelly Awards are sponsored by The Michael J. Kara Family, Deloitte, the Gismondi Family Foundation, Highmark Blue Cross Blue Shield, PNC and by the CLO Ambassadors.

The Charles Gray Award for Special Achievement in Arts Education is underwritten by the Roy A. Hunt Foundation.

CLO New Horizons is made possible in part by UPMC, Highmark Blue Cross Blue Shield, The Pittsburgh Foundation, Allegheny Foundation, Bellin/Coontz Family Giving Fund, Bender Consulting Services, Cooper-Siegel Family Foundation, PriceWaterhouseCoopers and the Edith L. Trees Charitable Trust.

Stars of Pittsburgh CLO's Summer Season dine at the Grand Concourse Restaurant at Station Square.

*The Official Hotel
of Pittsburgh CLO.*



*The Official Airline
of Pittsburgh CLO.*



*The Official Car Provider
of Pittsburgh CLO.*



New Musicals Commissioning Fund

The purpose of the EQT New Musicals Commissioning Fund is to identify and commission writers both in Pittsburgh and across the country to write new musicals for the Pittsburgh CLO Summer Season, Cabaret and Gallery of Heroes program.



Your Tax Dollars Hard at Work.

The Allegheny Regional Asset District (RAD) invests in our region's quality of life through financial support of libraries, parks & trails, arts & culture, regional attractions, sports & civic facilities, transit, and local municipal services with proceeds from an additional one percent county-wide sales tax.

Visit RADworkshere.org for more information.



Worth Every Penny.



One Mission.
One Passion.
One Purpose.

At MSA Safety, we build bridges with our surrounding communities through charitable giving and volunteer work. We do this so that our communities – and MSA's business – are all *Fit for a Bright Future!*



MSA is hiring! Join our team and help us protect the lives of workers around the world.

MSAsafety.com/careers

Pittsburgh Post-Gazette®

**TOP
WORK
PLACES
2022**



WHEN YOU GET BEHIND PITTSBURGH CLO, YOU GET TO GO BEHIND-THE-SCENES!

Charles Shaughnessy, star of PETER PAN, with donors at Supper with the Stars

SPECIAL BENEFITS only for CLO Donors:

- \$100 gift – two drink vouchers for the Benedum Center bars, a listing in show programs and priority access to readings of new musicals
- \$250 gift – invitation for two to a Reception and Dress Rehearsal of a Pittsburgh CLO show
- \$1,500 gift – year-round access to CLO's concierge department for all of your ticket exchanges and purchases, free reserved parking during six CLO shows PLUS opportunities to meet, mingle and dine with stars!



Donors at Dress Rehearsal Reception

And so much more!

For information about all the donor benefits you will receive, call Shirley Gaudette at 412-281-3973 ext. 210 or visit pittsburghCLO.org.

Ask about our Family-Friendly Donor Benefits.



**JOIN
OUR DONOR
FAMILY TODAY!**

The tax deductible amount of your contribution is limited by the excess of your contribution over the value of certain benefits provided by CLO. For more information, visit pittsburghCLO.org. A copy of the official registration and financial information may be obtained from the Pennsylvania Department of State by calling toll free, within Pennsylvania, 1-800-732-0999. Registration does not imply endorsement.

Next season is now!



Season 49 at your Pittsburgh Public Theater.

World premieres. World-class talent. Worlds apart from ordinary. Get the **best tickets** at the **best prices** when you **subscribe** today.

ppt.org/subscribe or 412.316.1600

ESTABLISHED 1996

The Difference is Trust.

TRUST & FIDUCIARY | INVESTMENTS | ESTATE ADMINISTRATION | TAX PLANNING



Smithfield
TRUST COMPANY

At Smithfield Trust Company, we support each chapter of your life, taking the time to understand the goals that you have for your legacy. Whether you are accumulating wealth, preparing for retirement, or planning for future generations, our duty is to deliver those goals through our value-added family office solutions.

We are a fiduciary that is committed to our core values.

It's what sets us apart and keeps our customer relationships strong for generations.



We invite you to experience the Smithfield Difference.

Start The Conversation

CONTACT A FIDUCIARY OFFICER TODAY

Smithfield Trust Company

20 Stanwix Street, 6th Floor
Pittsburgh, PA 15222

(412) 261-0779
smithfieldtrustco.com



Rethink
Your **Drink**

Rethink Your Drink.

GO ON GREEN.



RED | DRINK RARELY

Soda
Energy Drinks
Sports Drinks
Sweet Teas
Fruit Drinks

YELLOW | DRINK OCCASIONALLY

100% Fruit Juice
Seltzer Water
Flavored Milk

GREEN | DRINK ALL THE TIME

Water
Unflavored Skim/1% Milk

Water is the best drink option to build healthy habits in our children and teens!

To learn more, visit
livewellallegheny.com/rethinkyourdrink





Big Stage. Personal Roles.



When it comes to your business, we look at the big picture. And we never forget the importance of a personal relationship. Through our wide range of business advisory services, from accounting to wealth management, you can expect a great performance from Schneider Downs day after day. We are proud to be Western Pennsylvania's largest locally-owned public accounting firm.

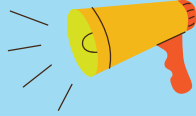
To learn more, visit schneiderdowns.com



SCHNEIDER DOWNS

Big Thinking. Personal Focus.

find YOUR
VOICE



Summer Reading 2023

June 11 - August 6

If you enjoyed tonight's SHOW



You and your family will enjoy reading these titles this summer!



Adult: *Nettle & Bone*, *T. Kingfisher*
Teen: *A Universe of Wishes: A We Need*
Diverse Books Anthology, *Dhonielle Clayton, editor*
Children: *The Princess and the Pit Stop*, *Tom Angleberger*

Register today: carnegielibrary.org/summer



FINER
Italian
BREAD



STRIP DISTRICT :: McKEES ROCKS :: mancinibakery.com

The Learning Never Stops

The Pennsylvania Cyber Charter School

is PA's most experienced K-12 online public school. Call **(724) 643-1180** or visit **PACyber.org** to discover new learning opportunities at our Pittsburgh offices.



KDKA

KDKA-TV NEWS AT 5
EXPECT MORE

QUIET ROOM
*LOCATED ON THE SECOND LEVEL
OF THE BENEDUM CENTER*

This room is intended to provide guests of all ages with an optional quiet space while still having the ability to engage in and enjoy live musical theatre together with family and friends.

Please see an usher or volunteer for guidance or to learn more.



The Director and Choreographer are members of the Stage Directors and Choreographers Society, a national theatrical labor union.



United Scenic Artists represents the designers and scenic painters for the American Theatre.



Backstage and Front of the House Employees are represented by the International Alliance of Theatrical Stage Employees (or I.A.T.S.E.).



The actors and stage managers employed in this production are members of Actors' Equity Association, the union of professional actors and stage managers in the United States.



The Musicians, Conductors, Music Preparation Personnel and Librarians employed in this production are members of the American Federation of Musicians of the United States and Canada.



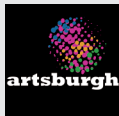
Pittsburgh CLO receives state arts funding support through a grant from the Pennsylvania Council on the Arts, a state agency funded by the Commonwealth of Pennsylvania and the National Endowment for the Arts, a federal agency.



The Allegheny Regional Asset District, a county agency created to support and finance regional assets, including libraries, parks, cultural groups, sports and civic facilities, and to distribute tax relief to the 128 municipalities of Allegheny County.



The National Endowment for the Arts is a public agency dedicated to supporting excellence in the arts, both new and established; bringing the arts to all Americans; and providing leadership in arts education. Established by Congress in 1965 as an independent agency of the federal government, the Endowment is the nation's largest annual funder of the arts, bringing great art to all 50 states, including rural areas, inner cities, and military bases.



SUPPORT • ENGAGE NETWORK • VOLUNTEER



The mission of the Pittsburgh CLO Ambassadors is to support and broaden the reach and diversity of the Pittsburgh CLO and to make musical theater an active and accessible part of the lives of its members and others through the organization of and participation in a combination of theatrical, social, fundraising, volunteer, and educational events.

BECOME A CLO AMBASSADOR TODAY!

pittsburghCLO.org/Ambassadors

THANK YOU TO OUR PITTSBURGH PARTNER!



The role of Jack played by Joe Serafini for *INTO THE WOODS*,
is underwritten through the generous support of

Joe and Kathy Guyaux



NEXT GENERATION
CAMPAIGN

**GOT A GROUP?
GET A DEAL!**

GROUPS OF 8+

Gather your friends, family or co-workers and discover the benefits and experience the theater together! It's easy to organize your group. We'll give you all the tools that you need to give your group the special treatment it deserves.

**ORDER ONLINE,
Call 412-325-1582
OR GROUPS@PITTSBURGHCLO.ORG**





PITTSBURGH CLO STAFF

Mark Fleischer, *Executive Producer*

SALES & MARKETING

Sharon Goldstein.....*Director of Sales and Marketing*
 Kiesha Lalama.....*Director of Strategic Initiatives*
 Nicole Castelli.....*Patron Services and Ticketing Associate*
 Ryan Clark.....*Manager of Patron Services and Ticketing*
 Emma Cumberledge.....*Patron Services and Ticketing Associate*
 Kyle J. Malinosky.....*Marketing Coordinator*
 Charlene Flores Shields.....*Group Sales Coordinator*
 Sidney Franczak.....*Marketing Manager*
 Elaina Laughlin.....*Patron Services and Ticketing Associate*

DEVELOPMENT

Wynne Fedele.....*Director of Development*
 Shirley Gaudette.....*Manager of Individual Giving*
 Lydia Grimenstein.....*Development Coordinator*
 Levi Von Iderstein.....*Development Data Coordinator*
 Brandon Marzke.....*Development Coordinator*
 Dayna Sowers.....*Board Liaison*

FINANCE & ADMINISTRATION

Angela Langill.....*Director of Finance and Administration*
 Michael J. Cerchiaro.....*General Manager*
 Shelby Hinkle.....*Human Resources Manager*
 Kuei-O Lin.....*Accountant*
 Shelly Sullivan.....*Controller*
 Keturah Wasler.....*Office Manager*

EDUCATION

Jim Scriven.....*Director of Education*
 Patty Maloney.....*Principal*
 Jacqueline Mishol.....*Receptionist*
 Alexander Righetti.....*Education Operations Coordinator*
 Ariel Squire.....*Receptionist*

PRODUCTION/CONSTRUCTION CENTER

John R. Edkins.....*Director of Production/Technical Supervisor*
 Billy Mason.....*Associate Producer*
 Benjamin Zimmer.....*Associate Director of Production*
 Macarena Subiabre.....*Production Manager*
 Michele Sullivan.....*Construction Center Business Manager*
 Matthew Abate.....*Welder*
 Michael Bannias.....*Key Carpenter*
 Megan Bresser.....*Charge Scenic*
 Fredrich Drenkow.....*Journeyman*
 Connor Edkins.....*Journeyman*
 Jordan Edkins.....*Foreman/CNC Operator*
 Kevin Hogan.....*Electrician*
 Daniel Kendgja.....*Electrician*
 Andrew Kutrufis.....*Head Carpenter*
 Timothy McCoy.....*Key Carpenter*
 Jessie Notarius.....*Scenic*
 Evan Shoaf.....*Key Carpenter*
 Brendan Smith.....*Key Carpenter*

INTO THE WOODS PRODUCTION

William Carlos Angulo.....*Choreographer*
 Catie Brown.....*Rehearsal Pianist*
 Greg Brooks.....*Sound Associate*
 Pamela Brusoski.....*Assistant Stage Manager**
 Emily Burnner.....*Sound Effects Editing*
 Jim Burns.....*Rehearsal Pianist*
 Chris Campbell.....*Artistic Fellow*
 Tome' Cousin.....*Intimacy Coordinator*
 Dustin Cross.....*Costume Designer*
 James Cunningham.....*Music Director and Music Supervisor*
 Chris Evans.....*Sound Designer*
 Joseph Fedore.....*Infection Disease Officer*
 Noah Glaister.....*Lobby Events Production Coordinator*
 Anna Hanson.....*Producing Assistant*
 Jim Harp.....*Keyboard Programmer*
 Kelly Haywood.....*Assistant Stage Manager**
 George Hoydich.....*Music Coordinator*
 Jeff Knaggs.....*Hair and Makeup Designer*
 Lisa Leiberling.....*Puppet Designer*
 Paul Miller.....*Lighting Designer*
 Colby Miller.....*Assistant Props Coordinator*
 Jacqueline Mishol.....*Assistant Company Manager*
 Michael Petyak.....*Fight Choreographer*
 Ben Pimental.....*Infection Disease Control Supervisor*
 Renée Rimland.....*Production Stage Manager**
 Marty Savolskis.....*Props Coordinator*
 Angie Staats.....*Company Manager*
 Kathie Sullivan.....*Wardrobe Supervisor*
 Carly Thompson.....*Stage Management Production Assistant*
 Gabriella Walko.....*Stage Management Production Assistant*
 Scott Weinstein.....*Director*
 Paul Wonsek.....*Set Designer*
 Jacob Zedek.....*Associate Lighting Designer*

SUMMER INTERNS

Connor Behary.....*Music Direction*
 Austin Brannan.....*Producing*
 Genevieve Chiappetta.....*Costume Coordination*
 Claire Dursa.....*Development*
 Bailey DeBerry.....*Company Management*
 Pan-Pan Gou.....*Sound Design*
 Emma Heiser.....*Production Management*
 Abby Kelley.....*Aftercare Coordinator*
 Gwen Lillycrop.....*Summer Camp*
 Jacob Malizio.....*Marketing and Public Relations*
 Harry Mullin.....*Production Assistant*
 Avery Ochs.....*Marketing and Public Relations*
 Etta Partridge.....*Community Engagement*
 Shelby Thach.....*Lighting*
 Corisa Saitta.....*Summer Camp*
 Makenzie Shimko.....*Theater Management*
 Marissa Waitlevertch.....*Summer Camp*

*Members of Actors' Equity Association, the union of professional actors and stage managers in the United States.



BENEDUM CENTER DIRECTORY

Check Rooms

Coin-operated lockers are located on the Mezzanine Level.

Emergency Calls

Refer emergency calls to the Benedum Center Security desk at 412-456-2610. Please turn off all cell phones, pagers, PDAs, and other digital devices during the performance and notify your contacts of the emergency number.

Elevator

Located off the Grand Lobby serving all levels of the Center.

Fire Exits

Located at all levels and clearly marked. Use ONLY in case of emergency.

Lost and Found

Call Benedum Center Lost and Found Line at 412-456-2610.

Refreshments

Bars are located on the Gallery Level, Grand Lobby and in the Clark Extension on the Promenade Level. Drinks may be purchased prior to performances and during intermission.

Restrooms

Lounges are located on the Gallery, Promenade and Mezzanine Levels. Restrooms for Ladies and Gentlemen are located on the Gallery, Promenade and Mezzanine Levels as well as in the Clark Extension on the Promenade. Restrooms for persons with disabilities are located on both the Grand Lobby and Promenade Levels. A family restroom with an adult changing table is located on the Promenade Level.

Smoking

Smoking is not permitted in the theater.

Stage Area

Limited to performers, staff and authorized visitors.

Volunteering

If you are interested in our Volunteer Program or any of the volunteering opportunities within the Pittsburgh Cultural Trust, contact Vinay at 412-456-1428.

Accommodations for Persons with Disabilities

- Wheelchairs are available in the main floor lobby for transition from entrance to seat location. Notice should be given at time of ticket purchase if wheelchair or disabled patron location is required.
- Rest rooms with accessible features are located in the Grand Lobby. Rest room with adult changing table is located on Promenade Level in the Clark Extension.
- Guide dogs gladly accommodated. Please inquire at the Box Office when buying tickets.
- Elevator in Grand Lobby serves all levels of the Center.
- Infrared hearing devices are available in the Guest Service Center.

The Box Office at Theater Square

Purchase tickets to all Cultural District performances, regardless of venue or presenting organization at the Box Office at the Benedum Center. Monday through Saturday, 10am to 6pm; Sunday noon to 4pm. For more information, visit www.trustarts.org. The Benedum Center Box Office will be open also on performance days, two hours before curtain time through intermission.

Information and Call Center Number

MasterCard, Visa, Discover and American Express are accepted. Call Center operates Monday through Saturday 10am to 8pm and Sunday noon to 8pm. Orders received one week in advance will be held for pick-up at the Box Office. The Benedum Center Box Office assesses a \$2.00 per ticket charge for reissuing lost or forgotten tickets. Call 412-456-6666.

Benedum Staff

Vice President OperationsGene Ciavarra
 Director of Operations Joanna Obuzor
 Theater Operations ManagerKatelyn Colwell
 Theatrical Renovation Project Manager.....Andrew Ostrowski
 Director of Volunteer Services and
 Front of House Guest ExperienceAshley Rieser
 Manager of Volunteer Services and
 Front of House Guest Experience Vinay Thomas
 Director of Production..... Berne Bloom
 Production Manager Diane Hines
 Stage Technicians.....Christopher Evans, Adolf Hundertmark
 Brett Lindblom
 Chief EngineerDennis Curry
 Engineers..... Dustin Curry, Rick Jordan, Brett Melisko
 Box Office.....Brenna Painter, Karoline Smith, Timothy Smith

Children's Policy

Regardless of age, all patrons must have a ticket. Children under the age of 3 years will not be admitted to the Benedum Center, Byham Theater or Greer Cabaret. All children must be seated with an adult. Any person disrupting a performance or inhibiting the enjoyment of an event for patrons may be removed from the theater without refund.

Bag Policy

In order to ensure the safety and security of all patrons and guests attending events, only bags smaller than 16" x 16" x 8" will be allowed to be brought in to Pittsburgh Cultural Trust theaters. This includes all large pocket books/purses, tote bags, duffel bags, suitcases, knapsacks, back-packs, packages, cartons, paper sacks, briefcases, portfolio cases, binocular cases, camera equipment cases, and any other type of extraneous device(s) which could be used for carrying or concealing items.

Patrons and guests with prohibited items will be allowed to return such items to their vehicle but will not be able to leave such items outside the facility doors; any such items left outside will be immediately discarded by the facility staff.

Make the Most of this Performance

When you attend Pittsburgh CLO performances, please be sure to have sufficient time for travel, parking and construction delays. Latecomers and anyone leaving the theater during the performance will be held in the lobby until a suitable break in the program. Parents, please be considerate of the performers, as well as your fellow audience members. Kindly remove restless children from the theater. Your attentiveness to these concerns is greatly appreciated and will enhance everyone's enjoyment of Pittsburgh CLO performances. Please turn off all cell phones and electronic devices during the show.



ORR'S rocks.

5857 Forbes Avenue
Pittsburgh PA 15217
412-421-6777

532 Beaver Street
Sewickley PA 15143
412-741-8080

orrsrocks.com

only
NATURAL
DIAMONDS