



Pittsburgh
CLO

CELEBRATING MUSICAL THEATER

GUYS & Dolls

UP NEXT!



Pittsburgh
CLO

CELEBRATING MUSICAL THEATER

NATASHA, PIERRE &
**THE GREAT
COMET
of 1812**



**SANDRA
OKUBOYEJO**
as Natasha Rostova



**NICK
REHBERGER**
as Pierre Bezukhov



**JASON
GOTAY**
as Anatole Kuragin



**NATASCIA
DIAZ**
as Marya

Denotes CLO Alum 



GET TICKETS

AUGUST 22 - 27

BENEDUM CENTER

"CHANDELIERS & CAVIAR, THE WAR CAN'T TOUCH US HERE!"

Get swept away by the opulence and glamor of "one of the decade's best musicals" (*Time Out NY*). This "vibrant, thrillingly imagined new musical" (*NY Times*) follows Natasha, a naïve young woman who falls for the attractive rebel Anatole while her betrothed Andrey is off fighting in a war. Full of romance and passion, this musical has a ground breaking score that mixes rock, pop, soul, and folk, and is unlike anything you've seen before.

*Book, Music & Lyrics by Dave Malloy
Adapted from War and Peace by Leo Tolstoy*

PITTSBURGH CLO BOARD OF DIRECTORS



OFFICERS



Alexander Overstrom
CHAIRMAN OF THE BOARD



Edward T. Karlovich
PRESIDENT

HONORARY CHAIRMAN OF THE BOARD

Julie Andrews

CHAIRMAN OF THE BOARD

Alexander Overstrom

PRESIDENT

Edward T. Karlovich

VICE PRESIDENT/ CLO AMBASSADORS

Luke A. Sizemore

VICE PRESIDENTS/ FINANCE

Timothy K. Zimmerman

John A. Lemmex

VICE PRESIDENTS/ CABARET THEATER

John Dick

Meghan Barrera

Leah Ohodnicki

VICE PRESIDENT/ CONSTRUCTION CENTER & FACILITIES

Yarone Zober

VICE PRESIDENTS/ DEVELOPMENT

Mark J. Minnaugh

Joseph V. DiVito, Jr.

Laurie M. Mushinsky

VICE PRESIDENTS/ EDUCATION

Christine M. Kobus

George Gans

VICE PRESIDENTS/ HUMAN RESOURCES

Lesley Evancho

Leslie S. Hyde

VICE PRESIDENTS/ MARKETING

Michael F. Walsh

Jon Galatis

VICE PRESIDENTS/PRODUCTION, NEW WORKS DEVELOPMENT & FUNDING

Peter J. Germain

Dennis Unkovic

Stephen S. Bloomberg

VICE PRESIDENTS/ NOMINATING

Scott F. Neill

Glenn D. Todd

VICE PRESIDENTS

Pritam Advani

Daniel I. Booker

Sherri Grasak

Richard S. Hamilton

Laura Penrod Kronk

SECRETARY

Johanna G. O'Loughlin

TREASURER

Joseph V. DiVito, Jr.

EXECUTIVE DIRECTOR EMERITUS

Charles Gray

EXECUTIVE PRODUCER EMERITUS

Van Kaplan

CORPORATE COUNSEL

James M. Doerfler

CHAIRMAN OF THE BOARD EMERITUS

Helen Hanna Casey

William M. Lambert

George A. Davidson, Jr.

Joseph C. Guyaux

James E. Rohr

Daniel I. Booker

Louis D. Astorino

DIRECTORS

Joyce A. Bender

Tony Benevento

Patricia M. Blenko

Jane Dixon

Clare Donahue

Gus Engel

Emilie Hammerstein

Vicki C. Henn

Paul Hennigan

Leon Hoffman

Margaret Izzo

Brian Koble

Diane B. Landers

Nicholas J. Liparulo

Richard J. Lipovich

Robert C. McCartney

Margaret McLean

Timothy M. McVay

Christina P. O'Toole

Robin S. Randall

Michael Rizzo

Eric A. Schaffer

Gregg Schmidtetter

Luke A. Sizemore

Arlene Sokolow

Helen Spalaris

LaShawnda Thomas

Joann L. Tissue

The Honorable

Debra Todd

Carla J. Vrsansky

Jake Wheatley, Jr.

ADVISORY BOARD

George Ator

Joan Bogut

Charles R. Fallon

Rosemarie R. Parse, Ph.D.

Melvin D. Rex



Welcome! Once again, PNC is pleased to serve as the premier sponsor of the Pittsburgh CLO's PNC Spotlight Series.

Each year the CLO delights and entertains audiences from across our region and beyond. And this season is no different, with all-new productions of timeless classics and modern masterpieces.

The PNC Spotlight Series performances and other presentations by the CLO are important elements of Pittsburgh's thriving Cultural District, which attracts thousands of visitors to Pittsburgh every year. Events like these serve as an engine of economic growth and vibrancy for the city. Our longstanding relationship with Pittsburgh CLO enhances the region's performing arts scene and helps sustain CLO's Academy of Musical Theater for children.

Thank you for being here and supporting one of our region's rich cultural assets. Enjoy the show!

Sincerely,

A handwritten signature in blue ink, appearing to read "L. Cestello". The signature is fluid and stylized, with a long horizontal stroke at the end.

Louis R. Cestello
PNC Head of Regional Markets &
Regional President of Pittsburgh and Southwestern Pa.



Welcome Friends and Family!

From our Caribbean Island of *ONCE ON THIS ISLAND* last week, today we travel to another island, Manhattan, for the Broadway classic *GUYS & DOLLS*. From the moment we announced this show as part of CLO's 2023 Summer of Musicals, audience members have approached me to share their love for this show. Whether it is their past experiences as an audience member seeing it with family and friends or watching the movie in their living rooms as children or singing along to the cast recording in the car or performing in the show back in high school or college, the show has always captured a mythical magic of NYC through its loveable characters and memorable songs. I must confess I too am one of those fans – back in college I sang and danced in the ensemble as Liver Lip Louie and “Luck Be a Lady” was my chosen song for auditions. I love hearing your musical theatre stories – keep them coming. After all it is our shared love of musicals that unites us at the CLO whether we are in the audience or on stage. If you are experiencing this classic musical and Damon Runyon's characters for the first time, welcome to the GUYS & DOLLS fan club; I can't wait to hear your reactions to the show.

Speaking of reactions...I know our next and final show of the summer will be the talk of the town: *NATASHA, PIERRE & THE GREAT COMET OF 1812* (August 22 – 27). Do you have your tickets yet? We strive to present the full range of American musicals and this Dave Malloy presentation is a unique and moving electropop show filled with drama, romance, and a scandalous love story that has withstood the test of time. So, even if you are classic musical theatre fan, take a chance on a new musical with a long title. You really won't want to miss this one!

As the summer series winds toward the end, we know you want to know, what's next for CLO? You didn't think we would just leave you hanging, did you? **FALL INTO HOLIDAYS** with the return of the Kara Cabaret Series at the newly renovated Greer Cabaret Theatre. We kick it all off with Johnathan Larson's rock musical *tick, tick... BOOM!* (September 22 – October 22). And this December leave the kiddos at home for *WHO'S HOLIDAY!* as Cindy Lou Who, now a grown-up, with all that it brings cocktails and cursing and jokes are her things. (December 1-31). Plus, we celebrate over 30 years of holiday tradition for the whole family with *A MUSICAL CHRISTMAS CAROL* (December 15 – 23).

All of us at Pittsburgh CLO are dedicated to the preservation, the future, and the celebration of the American musical theater. We have not done this alone. Since 1946 our loyal Patrons, Subscribers, and Donors have stood beside us to ensure we can produce Broadway caliber shows right here in our hometown. Thank you for your continued support in helping create magical musical memories all year long!

If you find yourself moved by today's performance of *GUYS & DOLLS*, consider donating to CLO by turning to PAGE 49 in your playbill and using the convenient QR code. My thanks in advance for joining CLO's ongoing efforts to bring musical theatre made by Pittsburgh, for Pittsburgh, and in partnership with Pittsburgh to life all year round.

Place your bets and roll those dice as we hit the streets of NYC in *GUYS & DOLLS*. Enjoy the Show!



Mark Fleischer
Executive Producer

THEATER CONNECTS THE WORLD. SO DO WE.

Just like the Pittsburgh Civic Light Opera, we're passionate about bringing people together, creating meaningful moments and inspiring new heights.

Delta is proud to be the official airline partner of the Pittsburgh CLO.



KEEP CLIMBING



AUGUST 8 - 13, 2023



MARK FLEISCHER, *Executive Producer*
Presents

GUYS & Dolls

A Musical Fable of Broadway
Based on A Story and Characters of Damon Runyon

Orchestrations by Michael Starobin
Dance arrangements by Mark Hummel

Additional orchestrations by Michael Gibson and Danny Troob

MUSIC AND LYRICS BY
FRANK LOESSER

BOOK BY
JO SWERLING AND ABE BURROWS

STARRING

NIKKI RENÉE DANIELS • JEFF KREADY • LESLI MARGHERITA • MATTHEW SALDÍVAR
AND **JOHN TREACY EGAN**

AARON GALLIGAN-STIERLE • JEFFREY HOWELL • CHRISTINE LAITTA • RICHARD MCBRIDE
J. ALEX NOBLE • BRADY D. PATSY • HERSCHEL SPARBER

WITH

ANDRÉS ACOSTA • GRACE ARNOLD • RYAN CAVANAUGH • BOBBY M. DAVIS • ZEPHANIAH DIVINE
AUSTIN TAYLOR DUNN • KYLIE EDWARDS • MATHW FEDOREK • ZANNA FREDLAND • MICHAEL GREER
JESSICA ICE • JOLINA JAVIER • CAROLINE KANE • ALEX MANALO • TAY MARQUISE • FILIP PRZYBYCIEN
BRITTANY PENT ROHM • AUSTIN SCHULTE • BEN SEARS • ALLAN SNYDER

SCENIC DESIGNER
TONY WALTON

LIGHTING DESIGNER
PAUL MILLER

COSTUMES PROVIDED BY
COSTUME WORLD THEATRICAL

SOUND DESIGNER
CHRIS EVANS

HAIR AND MAKEUP DESIGNER
JEFF KNAGGS

PROJECTION DESIGNER
BRYCE CUTLER

PRODUCTION STAGE MANAGER
RENÉE RIMLAND

CASTING

JZ CASTING • GEOFF JOSSELSON, CSA • KATJA ZAROLINSKI, CSA

MUSIC DIRECTOR
JAMES CUNNINGHAM

CHOREOGRAPHER
MARK ESPOSITO

DIRECTOR

DARREN LEE

The Director and Choreographer are members of the STAGE DIRECTORS AND CHOREOGRAPHERS SOCIETY, a national theatrical labor union.

GUYS & DOLLS is presented through special arrangement with Music Theatre International (MTI).

All authorized performance materials are also supplied by MTI.

www.mtishows.com

Costumes Provided by COSTUME WORLD THEATRICAL, Pompano Beach, FL. www.costumeworld.com

THE VIDEOTAPING OR MAKING OF ELECTRONIC OR OTHER AUDIO AND/OR VISUAL RECORDINGS OF THIS PRODUCTION OR DISTRIBUTING RECORDINGS ON ANY MEDIUM, INCLUDING THE INTERNET, IS STRICTLY PROHIBITED, A VIOLATION OF THE AUTHOR'S RIGHTS AND ACTIONABLE UNDER UNITED STATES COPYRIGHT LAW.

Pittsburgh CLO is a founding member of the National Alliance for Musical Theatre,
Independent Presenters Network and The Broadway League.

THE GREATEST
EXPERIENCES
ARE THE ONES
YOU ^{CAN} TASTE



Travel back to the Roaring '20s
at Omni William Penn Hotel,
where you'll enjoy classic cocktails
and nostalgic décor in our
Speakeasy social lounge.

OMNI  HOTELS
& RESORTS
william penn | pittsburgh

[OMNIHOTELS.COM/PITTSBURGH](https://www.omnihotels.com/pittsburgh)

HEALTHCARE TRUST OF AMERICA, INC.

HTA is proud to support Pittsburgh CLO.

We're the largest dedicated owner and operator of medical office buildings in the United States with \$148 million invested in over 1 million square feet across the great city of Pittsburgh. We take pride in investing in our local community.

Federal North MOB	191,610 sf
Allegheny Health Network Building	228,870 sf
Corporate One Office Park	116,260 sf
Highmark Penn Avenue Place	557,560 sf

Allegheny Health Network Building
Owned and Operated by HTA



HTA

Healthcare Trust of America, Inc.

Dedicated Owner of Best in Class Medical Office

NYSE: HTA

Corporate Headquarters

16435 North Scottsdale Road Suite 320
Scottsdale, AZ 85254
(480) 998-3478
www.htareit.com

HTA Pittsburgh Office

30 Isabella Street
Pittsburgh, PA 15214
(412) 321-3500



PITTSBURGH CLO ORCHESTRA

James Cunningham, *Conductor*
Robert Neumeyer, *Associate Conductor*
George Hoydich, *Music Coordinator*

Keyboard 1.....	Robert Neumeyer
Keyboard 2.....	Catie Brown
Reed 1.....	George Hoydich
Reed 2.....	Brady Amerson
Reed 3.....	Jason May
Reed 4.....	Sam Eisenreich
Reed 5.....	Jim Germann
Horn.....	Matt Litterini
Trumpet 1.....	Steve Hawk
Trumpet 2.....	Dave Wingenbach
Trumpet 3.....	Joe Herndon
Trombone.....	Bob Matchett
Viola.....	Jen Gerhard Mangone
Violin.....	Maureen Conlon Gutierrez, Joshua Huang, Rebecca Neukom, and Mary Beth Schotting
Cello.....	Joe Bishkoff
Bass.....	Jeff Mangone
Drums.....	R.J. Heid
Percussion.....	Paul Evans



Process Reproductions, Inc.

(412) 321-0920 | prpgh.com

Proud to be the Official Program Printer of the Pittsburgh CLO

LET'S GET SOCIAL!

Follow Us To Peek Behind The Curtain



@PittsburghCLO



@PittsburghCLO



@PittsburghCLO



@PittsburghCLO



MUSICAL NUMBERS

ACT I

Opening: Runyonland.....Full Company

SCENE 1: Broadway

Fugue for Tinorns.....Nicely-Nicely Johnson, Rusty Charlie, and Benny Southstreet

Follow the Fold.....Sarah Brown, Arvide Abernathy, and The Mission Band

The Oldest Established.....Nicely-Nicely Johnson, Benny Southstreet,
Nathan Detroit, and Ensemble

Reprise: Follow the Fold.....Ensemble

SCENE 2: Interior Save-A-Soul Mission

I'll Know.....Sarah Brown and Sky Masterson

SCENE 3: A Telephone Booth

SCENE 4 : The Hot Box - Nightclub

A Bushel And A Peck.....Miss Adelaide and The Hot Box Girls

Adelaide's Lament.....Miss Adelaide

SCENE 5: A Street Off Broadway

Guys And Dolls.....Nicely-Nicely Johnson and Benny Southstreet

SCENE 6: Exterior Save-A-Soul Mission, The Next Day

SCENE 7: A Street Off Broadway

SCENE 8: Havana, Cuba - El Cafe Cubano

Havana.....Sarah Brown and Sky Masterson

If I Were A Bell.....Sarah Brown

SCENE 9: Exterior Save-A-Soul Mission

My Time Of Day.....Sky Masterson

I've Never Been In Love Before.....Sarah Brown and Sky Masterson

INTERMISSION

There will be one fifteen-minute intermission.



MUSICAL NUMBERS

ACT II

SCENE 1: *The Hot Box - Nightclub*

Take Back Your Mink.....Miss Adelaide and The Hot Box Girls

Adelaide's Second Lament.....Miss Adelaide

SCENE 2: *Street Exterior*

More I Cannot Wish You.....Arvide Abernathy

SCENE 3: *Crap Game In The Sewer*

Crapshooter's Ballet.....Orchestra

Luck Be A Lady.....Sky Masterson and Ensemble

SCENE 4 : *A Street Off Broadway*

Sue Me.....Miss Adelaide and Nathan Detroit

SCENE 5: *Interior Save-A-Soul Mission*

Sit Down, You're Rockin' The Boat.....Nicely-Nicely Johnson and Ensemble

SCENE 6: *A Street Off Broadway*

Marry The Man Today.....Sarah Brown and Miss Adelaide

SCENE 7: *Broadway*

The Happy Ending.....Full Company

The engagement of our distinguished Choreographer, Mark Esposito for *GUYS & DOLLS*, is underwritten through the generous support of

Joe and Kathy Guyaux



NEXT GENERATION
CAMPAIGN



WHO'S WHO



NIKKI RENÉE
DANIELS



JEFF
KREADY



LESLI
MARGHERITA



MATTHEW
SALDÍVAR



JOHN TREACY
EGAN



AARON
GALLIGAN-STIERLE



JEFFREY
HOWELL



CHRISTINE
LAITTA



RICHARD
MCBRIDE



J. ALEX
NOBLE



BRADY D.
PATSY



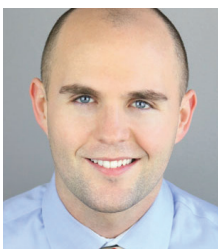
HERSCHEL
SPARBER



ANDRÉS
ACOSTA



GRACE
ARNOLD



RYAN
CAVANAUGH



BOBBY M.
DAVIS



WHO'S WHO



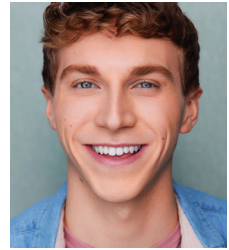
ZEPHANIAH
DIVINE



AUSTIN
TAYLOR DUNN



KYLIE
EDWARDS



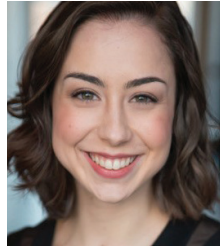
MATHEW
FEDOREK



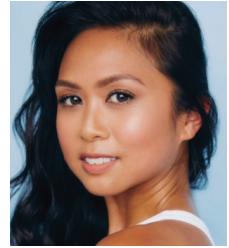
ZANNA
FREDLAND



MICHAEL
GREER



JESSICA
ICE



JOLINA
JAVIER



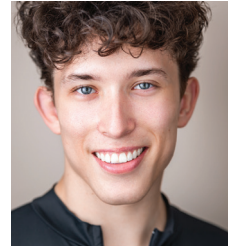
CAROLINE
KANE



ALEX
MANALO



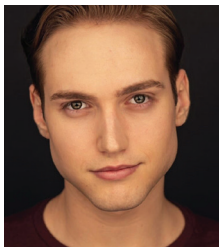
TAY
MARQUISE



FILIP
PRZYBYCIEN



BRITTANY
PENT ROHM



AUSTIN
SCHULTE



BEN
SEARS



ALLAN
SNYDER



Meet Our All-Star Cast



At #1 Cochran, our star-studded cast features 19 new car brands and thousands of preowned vehicles. Shop in store at any of our 33 locations or online with *ExpressWay* at Cochran.com.

#1 Cochran **GO 1 BETTER**
cochran.com

Official Vehicle Provider for Pittsburgh CLO



Pittsburgh
CLO

CELEBRATING MUSICAL THEATER

A Musical CHRISTMAS CAROL

DECEMBER 15 -23

**A HOLIDAY TRADITION FOR
THE ENTIRE FAMILY!**



Emmett Kent as Tiny Tim
A Musical Christmas Carol 2019
Photo Credit: Archie Carpenter

A MUSICAL CHRISTMAS CAROL **BYHAM THEATER**

Sponsored by:
KeyBank 

A HOLIDAY TRADITION FOR THE ENTIRE FAMILY! We've taken the spirit of the season, wrapped it in your favorite yuletide melodies, and tied it up with all the holiday magic and wonder of your childhood. Join Scrooge, Bob Cratchit, Tiny Tim, and a host of colorful characters for A MUSICAL CHRISTMAS CAROL. With dazzling special effects, holiday charm, and ticket prices even Scrooge would approve of, this Charles Dickens classic is a wonderful way to celebrate all the tradition of the season.

NEXT TIME
YOU ARE IN THE CITY,
STAY & DINE AT

Fairmont Pittsburgh!

Located at the heart of the city's business, theater and retail hub, the Fairmont hotel in downtown Pittsburgh offers superb and distinctive guest services and accommodations in a luxury setting.

To make a room or dining reservation, please visit our website at Fairmont.com/pittsburgh or call 412.773.8800.

During your stay, dine at **fl.2** – a modern American restaurant in a fresh and intimate setting.



fl.2
modern american

Fairmont Pittsburgh
510 Market Street, Pittsburgh PA 15222
pittsburgh@fairmont.com • 412.773.8800



@fairmontpittsburgh
@fl2pgh



Fairmont Pittsburgh
Floor 2

Life changing is... job training for a better future

Having an impact in the community means championing initiatives that offer our unemployed and underemployed neighbors the training, education, and support that creates a path to a successful career.

UPMC
LIFE CHANGING MEDICINE

[UPMC.com/CommunityImpact](https://www.upmc.com/CommunityImpact)

Marquisha
Pharmacy Services Advocate
UPMC Health Plan





WHO'S WHO - CAST

NIKKI RENÉE DANIELS (*Sarah Brown*) is happy to be playing opposite her real life husband, Jeff Kready, in this production! Nikki has done 11 Broadway shows including *Company* (Jenny), *The Gershwins' Porgy And Bess* (Clara), *The Book Of Mormon* (Nabulungi) and *Les Misérables* (Fantine). She played Angelica Schuyler in the Chicago company of *Hamilton*. Other New York credits: *1776* (Martha Jefferson, City Center Encores), *The Secret Garden* (Rose Lennox, David Geffen Hall) TV: *Billions*, *The Equalizer*, and *Madam Secretary*. Nikki holds a BFA in Musical Theatre from the University of Cincinnati, College-Conservatory of Music. Her debut solo CD, "Home" is available on iTunes.

JEFF KREADY (*Sky Masterson*) is thrilled to return to Pittsburgh CLO after having previously played Tommy in *Brigadoon* in 2018. Broadway: *Company*, *Tootsie*, *A Gentleman's Guide To Love And Murder*, *Billy Elliot The Musical*, *Sunday In The Park With George*, and *Les Misérables*. He was featured as Bert Healy the radio announcer in *Annie Live!* on NBC. Other TV: *The Marvelous Mrs. Maisel* (Amazon), *The Code* (CBS), *The Good Fight* (CBS), *Elementary* (recurring, CBS), *Boardwalk Empire* (HBO). Former elementary school music teacher, graduate of Washburn University in his native Topeka, KS. Favorite roles: husband to Nikki Renée Daniels, dad to Lena (10) and Louise (6). @jk_ready

LESLI MARGHERITA (*Miss Adelaide*) Pittsburgh CLO debut! Lesli Margherita won the Laurence Olivier Award for her West End debut in *Zorro The Musical*, and originated the roles of Mrs. Wormwood in *Matilda The Musical*, and Mona Kent in *Dames At Sea* on Broadway. Off-Broadway she received Drama Desk, Lortel, and Outer Critics nominations for *Who's Holiday*, *Emojiland*, and *A Scythe of Time*. Select TV credits: recurring and guest starring roles on *Minx*, *Fairly OddParents*, *The Rookie*, *The Crew*, *Raven's Home*, *Homeland*, *Instinct*, *Seven Seconds*, and *Elementary*. On film she can currently be seen on *The Many Saints of Newark* (HBO), and on *Opening Night* (Netflix). Her voice can also be heard on several animated films and shows including *Housebroken* (FOX), *Disney's Cinderella 3*, and *SpongeBob Squarepants* (Nickelodeon). Select favorite Regional theater credits: leading roles in *Damn Yankees*, *Guys & Dolls*, *Flamingo Kid*, *The Hunchback Of Notre Dame*, *Kiss Me Kate*, *Man Of La Mancha*, *Little Shop Of Horrors*, and *Spamalot*. Her album *Rule Your Kingdom*, is out now from Broadway Records. @QueenLesli | leslimargherita.com

MATTHEW SALDÍVAR (*Nathan Detroit*) Broadway: *The Wedding Singer* (Sammy, OBC), *Honeymoon In Vegas* (Johnny Sandwich, OBC), 2007's *Grease* (Kenickie), *Peter And The Starcatcher* (Black Stache), and principal roles in *A Streetcar Named Desire*, *Saint Joan*, *Junk*, *Act One*, and *Bernhardt/Hamlet*. Off-Broadway musicals include: *Kiss My Aztec*, *RENT: Live on Fox*, *Hadestown* directed by Rachel Chavkin (Hermes), Bartlett Sher's *South Pacific* (Luther Billis), *Annie Get Your Gun* directed by Sarna Lapine (Frank Butler), *Randy Newman's Harps and Angels* directed by Jerry Zaks, Sam Gold's *Cradle Will Rock*, *Guys & Dolls*, and *Spamalot* at The Kennedy Center.

JOHN TREACY EGAN (*Nicely-Nicely Johnson*) is thrilled to return to Pittsburgh CLO where he last appeared in *The Producers*. On Broadway, he has appeared in *My Fair Lady* at Lincoln Center Theater, *Casa Valentina*, *Nice Work If You Can Get It* and created roles in *Sister Act* (Joey) and *Disney's The Little Mermaid* (Chef Louis). He played Max Bialystock in the *The Producers* as well as the roles of Roger DeBris and Franz Liebkind. He was an original cast member of *Jekyll & Hyde* and Roundabout's *Bye Bye Birdie*. Off-Broadway,



WHO'S WHO - CAST

John Treacy Egan Bio Continued...

John created roles in *Clinton The Musical*, *Howard Crabtree's When Pigs Fly!*, *Disaster The Musical*, *The Dead 1904*, and *Batboy The Musical*. He has appeared on television in *And Just Like That*, *Gotham*, *Younger*, *The Good Wife*, *The Knick*, *Boardwalk Empire*, *Nurse Jackie*, *30 Rock*, *Law & Order*, and the films *Last Night*, and *The Producers*. He can be heard on many theatrical recordings as well as his own solo CDs *Count the Stars* and *On Christmas Morning* are available on itunes and cdbaby.com.

AARON GALLIGAN-STIERLE (*Benny Southstreet*) Pittsburgh CLO debut! Broadway: *The Phantom Of The Opera* (Monsieur Andre), *Ragtime* (Henry Ford), and *Grinch* (Papa Who). National Tour: *Irving Berlin's White Christmas* (Mike Nulty) Regional: Utah Shakespeare (9 seasons), KennedyCenter, Lincoln Center, The Rev, Oregon Shakespeare, Papermill Playhouse, TUTS, MSMT and many more. Head of Musical Theatre at Slippery Rock University. Training: BFA Shenandoah University (Musical Theater) MFA Penn State (Acting). Love to Shannon, Devin, and Zoe. @Aarongs1

JEFFREY HOWELL (*Arvide Abernathy*) Some Pittsburgh CLO favorites include: *Sister Act*, *The Wizard of Oz*, *Rock of Ages*, *Titanic*, *Brigadoon*, *Damn Yankees*, *Aida*, *Singin' in the Rain*, *Sunset Boulevard*, *A Musical Christmas Carol* (Bob Cratchit), *Disney's Beauty and the Beast*, *Bells are Ringing*, and *The Most Happy Fella*. Other Credits: *Barefoot in the Park* (Pittsburgh Public), *Citizens Market* (City Theatre), *Souvenir*, *Choir Boy* (The REP), and *Tribute to Lerner and Loewe* with Marvin Hamlisch (PSO). Honored to be named PG Performer of the Year 2020-21.

CHRISTINE LAITTA (*General Matilda D. Cartwright*) a proud local actor, Chris has performed in eight CLO Cabaret shows and her original cabaret *TV Tunes Sing-A-Long*, which is the longest-running original cabaret in Pittsburgh. Last summer, she was seen as the rapping sister, Mary Lazarus, in *Sister Act*. This summer, Chris will be performing in *Into the Woods*, *The Sound of Music*, and *Guys & Dolls*. She is also the director/choreographer of *Off The Record*, Pittsburgh's annual benefit for the food bank. Chris is the co-author of "The Dramatically Different Classroom" (Kagan Publishing) and was awarded the Rob Zellers Award for Excellence in Arts Education. Chris dedicates this season to her mom and husband Paul for their love and support. Thank you Mark and everyone at the CLO who make working here a pure joy.

RICHARD MCBRIDE (*Lt. Brannigan*) is thrilled to be back at Pittsburgh CLO. Richard last worked with CLO during the workshop of *HERO: A Boy from Troy*. Richard was also a part of the team that brought Broadway to Heinz Field. Richard was most recently seen in PMT's *Jersey Boys*, before that as a Stravling in Pittsburgh Public Theatre's *A Midsummer Night's Dream* in Harlem. Richard is grateful to Darren Lee and the Pittsburgh CLO team!

J. ALEX NOBLE (*Harry The Horse*) Pittsburgh CLO credits: *Annie* (Harold Ickes), *Fiddler on the Roof* (Avram), *Sunset Boulevard* (Finance Man 1), *Disney's Newsies* (Bunsen), *The Double-Threat Trio* (Jameson), and *A Musical Christmas Carol* (Topper). He has been seen onstage with Pittsburgh Public Theater, Quantum Theatre, West Virginia Public Theater, PICT Classic Theater, Pittsburgh Musical Theater, and Westmoreland Performing Arts. Point Park University graduate and AEA member since 2012.



WHO'S WHO - CAST

BRADY D. PATSY (*Angie The Ox*) is thrilled to be making his Pittsburgh CLO Summer Series debut with *Into The Woods*, *Once On This Island*, and *Guys & Dolls*. He recently returned from Nebraska where he served as the Associate Artistic Director of The Omaha Community Playhouse. Upon return, he toured with Pittsburgh CLO's Gallery of Heroes; *HERO: The Boy From Troy*. Some Regional credits include *RENT* (Tom Collins), *Children of Eden* (Father), *Les Misérables* (Javert), *Footloose* (Rev. Moore), *CATS* (Bustopher Jones/Gus); among others. Try to keep kindness with you, always!

HERSCHEL SPARBER (*Big Jule*) is delighted to join Pittsburgh CLO in this production! Broadway credits: *City Of Angels* (Big Six) and *Guys & Dolls* (Big Jule) with Nathan Lane and Faith Prince. Regional theaters: The Cleveland Playhouse, the Intiman Theatre in Seattle, LA's Mark Taper Forum among others. Film and TV: *The Birdcage*, *Star Trek Deep Space Nine*, *NYPD Blue*, and *Two Broke Girls* (to name a few). Also, I can't wait to have my first Primanti's sandwich!

ANDRÉS ACOSTA (*Guy Ensemble*) is a NYC based actor and is delighted to return to Pittsburgh CLO! Previous show at the Benedum was *In The Heights*. Tours: *West Side Story* (Bernardo) *Jersey Boys* (Gyp) and *Flashdance* (Joe). Favorite Credits: Nikos in *Legally Blonde The Musical* (MUNY) Tommy Devito in *Jersey Boys* (North Shore) Michael in *Smokey Joe's Cafe* (North Shore) Bernardo in *West Side Story* (Asolo Rep) *Evita* (Asolo Rep), BFA from FSU. IG @TheAndresAcosta

GRACE ARNOLD (*Doll Ensemble*) is thrilled to be a part of the cast of *Guys & Dolls*! Previous credits include: *A Chorus Line* (Val, International Tour), *A Chorus Line* (Val, Pittsburgh CLO), *A Chorus Line* (Val, City Springs Theatre Company), and *CATS* (Tantomile, City Springs Theatre Company). She is so grateful to the cast and the creative team for the opportunity to work on such a fun show. Much love to her family and friends and Glory to God always. IG @m.grace.arnold

RYAN CAVANAUGH (*Guy Ensemble*) is so grateful to be back for another summer with *Anything Goes* and *Guys & Dolls* this year! Pittsburgh CLO Credits: *South Pacific*, *Aida*, *Shrek The Musical*, *Damn Yankees* (Smokey), *Disney and Cameron Mackintosh's Mary Poppins*, and *Man of La Mancha*. As a teenager, Ryan was a part of several productions at the Benedum in the Pittsburgh CLO Teen Ensemble. Favorite Theatre Credits: Goodspeed Opera House, Asolo Repertory Theatre, *Damn Yankees* National Tour, and more. When Ryan is not on stage, he's teaching theatre at CAPA High School with the best students a teacher could ask for. Thanks Mom, Dad, and Jenna for your endless love and support!

BOBBY M. DAVIS (*Guy Ensemble*) is so happy to be making his Pittsburgh CLO debut! Select Regional: *Joseph...Dreamcoat*, *Disney and Cameron Mackintosh's Mary Poppins*, *Wonderland* (Tuacahn), *42nd Street* (The Rev), and *A Christmas Story* (John W. Engeman). National Tour: *The Elf on the Shelf: A Christmas Musical*. Marymount Manhattan College. Thanks to the best Pittsburgh locals/cousins Kelsey and Andrew and, of course, Mom and Dad! Instagram: @b0bbydavis

ZEPHANIAH DIVINE (*Guy Ensemble*) is very excited to be making his Pittsburgh CLO debut in *Once On This Island*! You can also catch him in *Guys & Dolls* and *Natasha, Pierre, & the Great Comet of 1812* later in the summer! Zephaniah is currently a rising senior at Texas State University getting his BFA in Musical Theatre! Zephaniah would like to thank



WHO'S WHO - CAST

Zephaniah Divine Bio Continued...

his friends and family for supporting him and the Pittsburgh CLO team! He hopes you enjoy the show! @thezephaniahdivine www.zephaniahdivine.com

AUSTIN TAYLOR DUNN (*Guy Ensemble*) is so excited to be making his Pittsburgh CLO debut! Some of his recent credits include *Carousel* (The Lyric Theatre of Oklahoma), *Matilda the Musical*, *The Terrence McNally Event* (ZACH Theatre). *Disney's Newsies*, *Sondheim on Sondheim* (Pittsburgh Playhouse). Austin recently graduated from Point Park University where he received his BFA in Musical Theatre and a minor in Dance. He would like to thank his family and friends for their love and support.

KYLIE EDWARDS (*Hot Box Girl*, *Mimi*, *Doll Ensemble*) is a native of Pittsburgh, PA and very excited to be making her Pittsburgh CLO debut. She is currently a rising sophomore studying Musical Theatre major at Carnegie Mellon University. Kylie would like to thank the creative team and cast of this show for such an incredible experience. She would also like to thank her teachers, family, and friends for their unwavering support.

MATHEW FEDOREK (*Guy Ensemble*) is a Pittsburgh native and CLO Academy alum. Past Pittsburgh CLO shows include *Kinky Boots*, *A Chorus Line*, *Sister Act*, and *Oliver!*. Other favorites include *Cabaret* (Emcee), *Disney and Cameron Mackintosh's Mary Poppins* (Bert), and *The Wild Party* (Jackie). Mathew holds his BFA from Penn State. He'd like to thank his parents, Marena, and Jack. @mathew.fedorek

ZANNA FREDLAND (*Agatha*, *Doll Ensemble*) Favorite credits include: *Man of La Mancha* (Aldonza), *Kiss Me, Kate* (Lilli Vanessi), and *Sisters of Swing* (Maxene Andrews). She has appeared with Pittsburgh CLO, Pittsburgh Public Theater, Saint Vincent Summer Theatre, and Front Porch Theatricals. Zanna has been a soloist with the Mendelssohn Choir of Pittsburgh and the Pittsburgh Symphony Orchestra. Zanna is a graduate of CMU and Rice University's Shepherd School of Music.

MICHAEL GREER (*Joey Biltmore*, *Guy Ensemble*) is thrilled to be back at the Benedum this summer! Favorite credits: *Puffs* (Cedric/Voldy), *Hand to God* (Timmy, City Theatre), *You Say Tomato, I Say Shut Up!* (Jeff Kahn, Denver Center and National Tour), *Shrek: The Musical* (Big Bad Wolf, North Shore Music Theatre), *Altar Boyz* (Luke), *Grease* (Johnny Casino) and over 30 productions with Pittsburgh CLO. Endless love to Mara and Maple Rose, the best Dad ever, and Mom, smiling down from the top mezzanine.

JESSICA ICE (*Hot Box Girl*, *Doll Ensemble*) is a Pittsburgh native and is thrilled to be returning to the Benedum Stage this summer! Jessica has been seen in several other Pittsburgh CLO productions since 2016. Other credits: *Guys & Dolls* (FLMT), *Cabaret* (LDTC), and *Elf*, *The Musical* (National Tour). Jessica would like to thank Hunter, Mom, Dad, Josh, Liv, George, Ira, and sweet baby Penelope for their support in getting this new mamma back on the stage!

JOLINA JAVIER (*Hot Box Girl*, *Doll Ensemble*) is thrilled to be back at Pittsburgh CLO! Broadway/NYC: *The Phantom Of The Opera*, *A Chorus Line* (Connie, NYCC), *Nixon in China* (The Metropolitan Opera), *The Radio City Christmas Spectacular*, *The Light In Piazza* (Young Margaret, NYCC). Regional: *A Chorus Line* (Connie, PCLO), *Susan Stroman's Little Dancer* (Nicoline, 5th Ave Theater). Film/TV: *Evil*, *Feud*, *The 75th Annual Tony*



WHO'S WHO - CAST

Jolina Javier Bio Continued...

Awards, The Tonight Show with Jimmy Fallon, The Kelly Clarkson Show. Commercials: Kate Spade, Bush's Baked Beans, Boll & Branch, BioTru, and Kayak. @jojolinajavier

CAROLINE KANE she/her (*Hot Box Girl, Doll Ensemble, Dance Captain*) is thrilled to be back at Pittsburgh CLO! Previous credits include: *Water for Elephants* (World Premiere at the Alliance Theatre) Pittsburgh CLO (*Oklahoma!, Thoroughly Modern Millie, Disney's Beauty and the Beast, Brigadoon*), Goodspeed Musicals, Sacramento Music Circus, Utah Shakespeare Festival, Walnut Street Theatre, The Rev, Cortland Rep. Television/ film include *The Marvelous Mrs. Maisel* (seasons 4 and 5) and *I am Wrath* (Jenna). Love to Mom, Dad, and sisters. BFA Otterbein University. @carolinekane7

ALEX MANALO (*Martha, Doll Ensemble*) is delighted to make her way back to Pittsburgh CLO and is wearing many hats this summer. She has been grateful to work and perform with several theater companies in the Pittsburgh area such as Pittsburgh Public, Pittsburgh Playhouse, Hiawatha Project, Front Porch Theatricals, Academy Theater, and City Theatre. She is also a proud member of the Filipino American Association of Pittsburgh. Mabuhay! Point Park Alum. Proud AEA member. IG: alexmanalo_

TAY MARQUISE (*Calvin, Guy Ensemble*) is a multi-hyphenate artist and creator hailing all the way from Sarasota, FL. All the world truly is his stage and there is nothing he loves more than performing, except food. You can catch him at a stagedoor, an H&M, a juice generation, or creating viral dances on a screen near you be it on Tiktok or Instagram, both @Taymarquise

FILIP PRZYBYCIEN he/him (*Guy Ensemble*) A proud Polish-born performer from Philadelphia, Filip is a senior at Columbia University studying dance and is so happy to be making his Pittsburgh CLO debut! Off-Off-Broadway: *Voyeur: The Windows of Toulouse-Lautrec*. Regional: *Chess, An American in Paris, The Addams Family, Legally Blonde The Musical, Escape to Margaritaville* (Surflight). Most recently seen at SHAG Festival with The Verdon Fosse Legacy®. Special thanks and love to mom and dad! Dancing for Tofee <3. @filipprzybycien

BRITTANY PENT ROHM (*Hot Box Girl, Doll Ensemble*) Pittsburgh CLO debut! Credits: *Disney's Frozen: A Musical Spectacular* (World Premiere), *The Drowsy Chaperone* (Janet Van de Graaff), *Into The Woods* (Lucinda), *Oliver!* (Nancy), *Sweet Charity* (Charity Hope Valentine), *The Miracle Worker* (Helen Keller), and *Disney's The Golden Mickey's* (Cruella De Vil). Brittany is a choreographer for Cedar Fair Entertainment Company! A proud graduate of Pittsburgh CAPA & Point Park University.

AUSTIN SCHULTE (*Guy Ensemble*) is honored to be returning to the Pittsburgh CLO stage. He was last seen in 2022 summer season's *The Drowsy Chaperone, Kinky Boots*, and *A Chorus Line*. He got his BFA in Musical Theatre from Point Park University, but is originally from Southern California, where his Regional credits include *Young Frankenstein* and *West Side Story*. He wants to thank his family for their unending love and support.



WHO'S WHO - CAST

BEN SEARS (*Guy Ensemble*) is a NYC based actor, pizza enthusiast, and is thrilled to be making his Pittsburgh CLO debut! National Tours: *CATS* (1st Nat'l), *A Bronx Tale*. Regional: *Gypsy*, *The Music Man* (Goodspeed), *Legally Blonde The Musical* (Kansas City Starlight), *Catch Me If You Can* (REV), *West Side Story*, *Disney's Newsies!* (The LEX), *Funny Girl*, *Crazy for You* (Forestburgh Playhouse.) Shoutout to "The A Squad" and huge thanks to my Agents, David, Alex, and Amanda! Love to Dad, Brian, May, Kate, Emily, Abby, Anna, & Lily. As always, this is for Dad.

ALLAN SNYDER (*Rusty Charlie*, *Guy Ensemble*) is thrilled to return to Pittsburgh CLO after appearing in *Titanic*, *Oklahoma!*, *The 39 Steps*, and several seasons of *A Musical Christmas Carol*, among others. Allan appeared on Broadway in *Les Misérables*, Off-Broadway in *The Fantasticks* and toured in *The Phantom of the Opera*, often appearing in the title role. Pittsburgh credits include: Pittsburgh Public Theater, Front Porch Theatricals, PICT Classic Theatre, and Pittsburgh Musical Theatre.

WHO'S WHO - CREATIVE

DARREN LEE (*Director*) Broadway: associate choreographer *Pacific Overtures*, other New York credits: Orchard Project, Asia Society, Fringe Festival, NYMF, and Prospect. Regional: Drury Lane, Ogunquit Playhouse, Oregon Shakespeare Festival, Olney Theatre Center, MUNY, Paper Mill, Music Theatre Wichita, Glimmerglass Opera, La Jolla Playhouse, McCarter Theatre, Williamstown Shakespeare, Kennedy Center, Diamond Head, UNLV, Westchester Broadway, North Shore, Cincinnati Playhouse, Atlanta Alliance, Trinity University, Lyric Theatre, Casa Mañana, Omaha Symphony, South Dakota Symphony, Holland America Cruise Line, Disney Cruise Line. Performance, Broadway: *Chicago*, *Guys & Dolls*, *Allegiance*, *Shogun The Musical*, *Miss Saigon*, *Victor/Victoria*, *Kiss Me, Kate*, *On The Town*, *Seussical The Musical*, *Pacific Overtures*, and *Thoroughly Modern Millie*.

MARK ESPOSITO (*Choreographer*) has choreographed for theater, television, commercials and videos. His work has been seen at Pittsburgh CLO for several years choreographing over 16 shows. Other works seen at Pasadena Playhouse, The Hollywood Bowl, The Reprise Series in Los Angeles, La Miranda Theater, Musical Theater West, Sacramento Music Circus, Universal Studios, Pittsburgh Playhouse, Music Theater of Wichita, North Shore Music Theater, Bass Hall and Casa Mañana, Blowing Rock Stage Company, Ogunquit Playhouse, Globus Theater Company in Russia and The York Theater Company and Signature Theater in New York. Mark has served as Associate Director and Choreographer for The Radio City Music Hall Christmas Show and as choreographer for Yuletide Celebration with the Indianapolis Symphony Orchestra. Mark has performed in over 16 Broadway and 1st National Tours and has taught at U of M, U of AZ, NYU, and Point Park College among others.

JAMES CUNNINGHAM (*Music Director*) has music directed over 15 production for the CLO summer series since 2017. New York credits include *Avenue Q* (conductor), music director for *Bunnicula* (TheaterworksUSA and original cast recording), *Hot Mess In Manhattan* (Araca Project), and *Happy Birthday* (TACT) for which he also provided original music. National Tours credits as pianist and/or conductor include: *Irving Berlin's White Christmas*, *Spamalot*, *Evita* and *CATS*. Other regional credits include productions for Arena Stage, Casa Mañana, North Carolina Theatre, Sharon Playhouse, Shakespeare Theatre Company, The Engeman Theater, Paper Mill Playhouse and The Muny. He is currently on the faculty at Point Park University.



WHO'S WHO - CREATIVE

TONY WALTON (*Scenic Designer*) Broadway productions: *1776* sets; *A Funny Thing... Forum* sets/costumes; *The Cripple of Inishmaan* sets. His 19 films include work with Bob Fosse, Sidney Lumet, Mike Nichols, Ken Russell, and Truffaut. Walton has co-produced six productions in London, including three with Hal Prince. Awards include the Oscar, Emmy, and Tony (three Tonys out of 14 nominations).

PAUL MILLER (*Lighting Designer*) 6th season at Pittsburgh CLO. Broadway: Designed 5, Associate/Assistant on 20 others. Off-Broadway favorites: *Desperate Measures*, *Clinton!*, *Pageant*, *Vanities - the Musical*, *Waiting for Godot*, *Nonsense*, *Encores!* (9). National Tours: *Hairspray*, *Elf*, *The Wizard of Oz*, *Sweeney Todd...Fleet Street*, *The Producers*, *RENT*, *Shrek The Musical*. Regional: The Old Globe, Dallas Theater Center, Chicago Shakespeare, Idaho Shakespeare, Asolo Rep, ACT, Cleveland Playhouse, Pasadena Playhouse, Goodspeed, and others. Television: *Evil* (CBS & Paramount+), *Live from Lincoln Center*, 23 Netflix specials, *New Year's Eve/Time's Square* (23 years & 100+ performances). International: Stratford, West End, Vienna, Milan (Teatro alla Scala), Brazil, The Philippines, South Africa, Iceland and China.

CHRIS EVANS (*Sound Designer*) is a graduate of Carnegie Mellon University (Drama '83). He has been teaching the Advanced Sound System Design course in the School of Drama for the past 7 years and also advises student sound designers who are assigned to musical productions. He has served as the House Sound Engineer at the Benedum Center in Pittsburgh, PA since 1987. During this time he has also designed and engineered shows for the Pittsburgh Opera, Pittsburgh Ballet and Pittsburgh CLO. In addition to his professional career in Pittsburgh, he has lectured for the Broadway Sound Master Class Series in New York City and designed sound for the Jimmy Awards at the Minskoff Theater.

JEFF KNAGGS (*Hair and Makeup Designer*) is taking a break from his day job as Senior Manager of Theatrical Costuming for Norwegian Cruise Line Holdings to come back to one of his favorite cities! For NCL he has designed *Kinky Boots*, *Footloose*, *Six*, and *After Midnight*. Royal Caribbean: *Hairspray*, *Flight: Dare to Dream*. *The Silk Road*, *Showgirl!*, *The Effectors*. Pittsburgh CLO: 2017, 2018, 2019, & 2022 Seasons. TUTS: *Memphis*, *Dreamgirls*, *Into the Woods*, *How to Succeed...*, *The Rocky Horror Show*, *Million Dollar Quartet*, *Heathers*, *Disney and Cameron Mackintosh's Mary Poppins*, *Sweet Potato Queens*, *Bonnie & Clyde*, *A Christmas Story*, *Music Man*. Theatre Aspen: *Beautiful*. Regional: *Mamma Mia!*, *Peepshow*, *Young Frankenstein*, *Disney's The Little Mermaid*, *Dancing With The Stars*, *America's Got Talent*, and *Into the Woods* at The Hollywood Bowl.

BRYCE CUTLER (*Projection Designer*) previous designs include *Grand Horizons* on Broadway, 2020 Pulitzer Prize finalist *Soft Power* at the Public Theater along with world premieres by John Patrick Shanley, Dael Orlandersmith, Matt Aucoin, Grammy Award winner Steve Mackey, production design of Samsung's virtual reality television series *Interpretation of Dreams*, an AI powered light and sound experience with St. Vincent and a virtual reality arcade for Muse's 2019 World Tour. Education: CMU. www.brycecutler.com

KATHIE SULLIVAN (*Costume Coordinator*) is an IATSE member. Kathie has been the Costume Supervisor for the Pittsburgh CLO since 1987 and the Pittsburgh Ballet Costume Supervisor since 1981. She has been the Costume Coordinator for several CLO productions including CLO Guys & Dolls, several bus and truck tours, and many international and national tours. Endless thanks to my fabulous intern Genevieve, my stitchers, sister Debbie, Kim, and Joanie, Stage Manager Kelly and my IATSE dressers, all



WHO'S WHO - CREATIVE

Kathie Sullivan Bio Continued...

whom I wouldn't not be able to do what I do without them. Many thanks to my family for understanding the long summer hours and to my dad for my theatre start!

JZ CASTING (*Casting Directors*) Geoff Josselson, CSA and Katja Zarolinski, CSA are New York-based casting directors, handling productions for theatre, film and television. Recent work includes productions for Arena Stage, Actors Theatre of Louisville, Baltimore Center Stage, Cape Playhouse, Denver Center, Ensemble Studio Theatre, The Irish Repertory Theatre, Merrimack Rep, Oregon Shakespeare Festival, Paper Mill Playhouse, Pittsburgh CLO, Pittsburgh Public Theatre, Repertory Theatre of St. Louis, Round House Theatre, Seattle Repertory Theatre, Theaterworks Hartford, Weston Playhouse. For more information, visit www.jz-casting.com

ABE BURROW (*Book*) After studying to be a doctor and an accountant, Abe Burrows had a career in sales before becoming a successful radio script writer and writer/performer of musical parody numbers. His first Broadway libretto was *Guys & Dolls*, co-written with Jo Swerling, with a score by Frank Loesser. Among the musicals for which he provided librettos are *Make A Wish*, *Can-Can*, and *Silk Stockings* (both with scores by Cole Porter), *Say, Darling*, and *How to Succeed in Business Without Really Trying* (which he also directed; score by Frank Loesser). His non-musical plays include *Cactus Flower* (wrote and directed) and *Forty Carats* (directed).

FRANK LOESSER (*Music, Lyrics*) One of America's great composer/lyricists, Frank Loesser began his songwriting career during the Depression as a lyricist, contributing songs to Broadway revues and nightclub acts. His work with composer Irving Actman in the 1936 revue *The Illustrator's Show* led to a songwriting contract in Hollywood, where he spent the next eleven years working with such composers as Burton Lane, Jule Styne, Arthur Schwartz and Hoagy Carmichael. Some of his film songs from that period include "Two Sleepy People," "Jingle Jangle Jingle" and "I Don't Want To Walk Without You." The first song for which Loesser wrote both words and music was "Praise The Lord And Pass The Ammunition," written during his World War II service. His Hollywood work after the war included the hit songs "Spring Will Be A Little Late This Year," "A Slow Boat To China," and the 1949 Oscar-winning song "Baby, It's Cold Outside." In 1948 Loesser was approached by fledgling Broadway producers Cy Feuer and Ernest Martin to write music and lyrics to George Abbott's libretto for an adaptation of the classic Brandon Thomas play Charley's Aunt. The new musical, which starred Ray Bolger, was called *Where's Charley?* and was a hit. This led to Loesser's next show, the hugely influential and successful *Guys & Dolls* in 1950, also produced by Feuer and Martin, with a script by Abe Burrows and Jo Swerling. In 1956 Loesser wrote the libretto, music and lyrics for his next show, *The Most Happy Fella*, adapted from Sidney Howard's play, *They Knew What They Wanted*. This impressive score contains over 30 musical numbers and makes extensive use of operatic techniques and forms, including recitative, arias, duets, trios and choral numbers. In 1960 he provided the score and was co-librettist for *Greenwillow*. In 1961, Loesser wrote the score for the Pulitzer Prize-winning *How To Succeed In Business Without Really Trying*. His last show, *Pleasures And Palaces*, closed in 1965 during out-of-town try-outs.

JOE SWERLING (*Book*) Born in Russia in 1897, Jo Swerling was a playwright, screenwriter and vaudeville sketch writer. Mr. Swerling's long career began as a reporter and feature writer in New York and Chicago.



Pittsburgh
CLO

Academy of Musical Theater

**2023-2024
REGISTRATION**



REGISTER TODAY

CLASSES BEGIN SEPTEMBER 2

The CLO Academy, **Pittsburgh's premier performing arts training program**, has something for everyone! Whether you are set to pursue serious training, or just want to experience musical theater in a fun, welcoming environment, we have a place for you! To learn more about our classes or to register online, **scan the QR code above or visit www.PITTSBURGH.CLO.ORG**. To register by phone, call 412-281-2234.

All classes are available onsite at the CLO Academy, or online via Zoom.

*Photo Credit:
Archie Carpenter*

24 SCHOOL YEAR REGISTRATION NOW OPEN!

FALL CLASSES | AGES 3 - 8

The CLO Academy provides the finest dance, voice, and acting training in Pittsburgh in a positive, fun-filled class setting! These classes encourage both an appreciation for musical theater and a well-rounded education.

Class options include: Acting, Dance, Voice, Musical Theater, Hip Hop, Acting for TV and Film, Improv, Creative Theater for Pre-Schoolers, and so much more!

ADULT CLASSES | AGES 18 +

We have classes for you too! Check out our adult class offerings which include **Adult Acting, Beginner Ballet and Beginner & Intermediate Tap.**

PRIVATE LESSONS | AGES 8 - ADULT

VOICE, DANCE, PIANO, ACTING, AND AUDITION COACHING

We have a variety of private lesson teachers and options ready to help you achieve your dream of being a star!

NEW HORIZONS | ALL AGES

THEATER CLASSES FOR ADULTS AND STUDENTS WITH DISABILITIES

PRODUCTIONS | AGES 8 - 18

CLO Academy performance opportunities allow students to work with a professional production team and perform live on stage for family and friends!

FALL MUSICAL!



WINTER PLAY!



SPRING MUSICAL!



SING

DANCE

ACT

PRIVATE
LESSONS



WHO'S WHO - CREATIVE

RENÉE RIMLAND (*Production Stage Manager*) is happy to be back for another wonderful summer at Pittsburgh CLO! Broadway: *Disney's Beauty and the Beast, Cabaret, Fosse, Jekyll & Hyde, Steel Pier*. National Tours: *42nd Street, Beauty...*, *Les Misérables, Joseph ... Dreamcoat, The Phantom of the Opera, Savion! Footnotes, Buddy! The Buddy Holly Story, Evita, Bye Bye Birdie*. PSM for over 12 seasons at Pittsburgh CLO. For JRR, always! Proud AEA member.

KELLY HAYWOOD (*Assistant Stage Manager*) CLO: *A Chorus Line, Sister Act, In The Heights, Peter Pan, Mamma Mia!, Aida, Damn Yankees, Shrek The Musical, Monty Python's Spamalot, A Musical Christmas Carol* and *42nd Street*. Pittsburgh Public Theater: *Steel Magnolias, Slow Food, Barefoot in the Park, Little Shop of Horrors, Born Yesterday, Noises Off, A Christmas Story* and *True West*. Kelly has also done several productions with the Pittsburgh Opera and Ballet.

CHRISTINE SCHOTT (*Assistant Stage Manager*) is thrilled to be returning to Pittsburgh CLO after an 18 year absence! She has been a Pittsburgh-based Stage Manager for over 20 years for companies including Pittsburgh Opera, City Theatre, Pittsburgh Public, and Quantum Theatre. Christine spent many years as the Production Manager for Carnegie Mellon University's School of Music. She now spends much of her time passing on a love of theatre to middle and high school students in the Steel Valley School District. Love to CTB, ASB, and ELB!

COSTUME WORLD THEATRICAL (*Costume Rental*) is a cutting-edge costume rental company that not only houses the largest collection of costumes in the United States, but also offers personalized, knowledgeable services that are absolutely unbeatable. With 1.2 million costumes in the collection, Costume World maintains and leases an incredibly diverse spectrum of costumes from the every-day to complete Broadway productions. Our innovative services allow customers to rent everything from single costumes to entire productions. Our skilled staff can also help you find that hard-to-find costume, Tony award-winning designs or period reconstructions. Our designers and rental experts work with your vision to help you affordably outfit your productions. We are committed to helping you achieve the perfect look for your creative project. Costume World is an industry leader in providing costume rentals and tailoring services with a personalized touch. Let Costume World make your theatrical vision come alive. For more information please visit www.costumeworld.com

MUSIC THEATRE INTERNATIONAL (*Licensing*) is one of the world's leading theatrical licensing agencies, granting theatres from around the world the rights to perform the greatest selection of musicals from Broadway and beyond. Founded in 1952 by composer Frank Loesser and orchestrator Don Walker, MTI is a driving force in advancing musical theatre as a vibrant and engaging art form. MTI works directly with the composers, lyricists and book writers of these musicals to provide official scripts, musical materials and dynamic theatrical resources to over 100,000 professional, community and school theatres in the US and in over 150 countries worldwide. MTI is particularly dedicated to educational theatre, and has created special collections to meet the needs of various types of performers and audiences. MTI's Broadway Junior™ shows are 30- and 60-minute musicals for performance by elementary and middle school-aged performers, while MTI's School Editions are musicals annotated for performance by high school students.



WHO'S WHO - CREATIVE

MARK FLEISCHER (*Executive Producer*) serves as the artistic and administrative head of the Pittsburgh CLO producing the company's 6-show summer season, Kara Cabaret Series and its annual production of *A Musical Christmas Carol*. Mark's passion for developing new musicals led to the creation of CLO's SPARK Festival initiative to develop new small musicals – a program made possible by the CLO's Next Generation Capital Campaign. Since its creation in 2017, the program has contributed to the development of more than 15 new musicals including the world premieres of *Up and Away* by Kevin Hammonds and Kristin Bair, *Game On* by Marcus Stevens and David Dabbon, *Beyond the Moon* by Joe Domencic and Christina McCann, *The Double-Threat Trio* by Adam Overett and *An Untitled New Play by Justin Timberlake* (co-produced by Pittsburgh's City Theatre). SPARK has also led to the adaptation and reduction of reducing existing Broadway shows so they can be produced with smaller casts (*First Date*, *Xanadu*, and *Dirty Rotten Scoundrels*). Prior to joining the CLO, Mark was the Producing Artistic Director of Adirondack Theatre Festival from 2007 – 2014 where he was named the Region's Best Artistic Director by Metroland in 2009. From 1993 – 2002 he served as the Managing Artistic Director of Plano Repertory Theatre in suburban Dallas from 1993 – 2002. With a passion for new plays and musicals, he has directed readings and world premiere productions for theatres across the country. He is a Board Member of the National Alliance for Musical Theatre (NAMT), chairing the organization's Educational Resources Committee and has served on its New Musical Festival Committee. Mark is also a member of The Broadway League where he serves on the Intra-Industry committee. He has taught acting, theatre history and arts administration courses at SUNY Empire State College, Columbia College, and Collin College. Mark holds a BA in English Literature and Communication Arts from Austin College and MFA in Directing from the Theatre School at DePaul University.

PITTSBURGH CLO (*Producing Company*) has been a driving force behind the preservation, creation and promotion of live musical theater since 1946. Founded in the years following WWII as a way to bring Pittsburgh together for a community experience, the company has grown to become one of the largest regional musical theater organizations in the country. CLO produces fresh new productions of Broadway classics, as well as its ongoing commitment to develop new musicals of all sizes. The organization's dedication to musical theater extends beyond its six-show summer season at the Benedum Center to year-round programming at the Cabaret Theater which saw the world premieres of *Judge Jackie: Disorder in the Court* by Michael Kooman and Christopher Diamond (2014), *Up and Away* by Kevin Hammonds and Kristin Bair (2018), *Game On* by David Dabbon and Marcus Stevens (2018) and *The Double-Threat Trio* by Adam Overett (2019), as well as the musical *An Untitled New Play by Justin Timberlake* by Matt Schattz (2021 co-production with City Theatre). To support the development of these small cast musicals the CLO launched the SPARK Festival in 2018 which has developed over 15 new musicals through readings, workshops, and world premiere productions. The company's Gallery of Heroes program has commissioned and produced over 25 world premiere educational musicals designed for in-school presentations integrating musical theatre and classroom science/social studies curriculum. Gallery of Heroes performs in over 100 schools annually. The current GOH show in development about Civil rights icon John Lewis is titled *HERO: The Boy from Troy* by Nambi E. Kelley and Joe Plummer. Outside of Pittsburgh the organization has helped grow the art form through its involvement with 28 Broadway shows (30 Tony Awards®) and in 2014 produced the world premiere of *An American in Paris* on Broadway, where it won 4 Tony Awards®



WHO'S WHO - CREATIVE

Pittsburgh CLO Bio Continued...

and was the most awarded musical of the 2015 season, and in London's West End. In addition, the company has a commitment to nurturing emerging talent and has been credited with launching the careers of numerous artists such as Billy Porter, Renée Elise Goldsberry, Rob Marshall, Kathleen Marshall, Rob Ashford, Bernadette Peters and Shirley Jones. CLO's extensive education efforts include a university internship program, New Horizons for students with disabilities, and Creative Vision an in-school residency program at underperforming schools. Other ongoing initiatives include the Pittsburgh CLO Academy of Musical Theater, the Construction Center for the Arts, the acclaimed Gene Kelly Awards for Excellence in High School Musical Theater, and the National High School Musical Theatre Awards (The Jimmys) created in partnership with the Nederlander Organization and The Broadway League. Pittsburgh CLO is the subject of a 2007 film starring Jeff Goldblum titled "PITTSBURGH." pittsburghCLO.org.

 WESTINGHOUSE ARTS ACADEMY

ENROLL NOW!

**Culinary Arts - Dance - Digital Arts - Instrumental - Literary Arts -
Musical Theatre - Studio Arts - Theatre - Voice**

Westinghouse Arts Academy is a **TUITION FREE**, public arts school for grades 9-12!

  @westinghouseartpa 320 Marguerite Ave. Wilmerding, PA | 412-646-5418



ORDER ONLINE TODAY!

EXCLUSIVE SHOW MERCH ALL SUMMER LONG!



PCLO - 2023 SUMMER SEASON
(Y/A) Short Sleeve T-Shirt
AVAILABLE IN 6 COLORS



PCLO - GUYS & DOLLS
Youth/Adult Short Sleeve T-Shirt



GUYS & Dolls

AUGUST 8 - 13

NEW SHOW SPECIFIC ITEMS WILL BE ADDED
THROUGHOUT THE SEASON!

\$22*

*PRICE MAY VARY
DEPENDING ON SIZE



PCLO MERCH

WWW.PITTSBURGHCLCLO.ORG/MERCH

BAZ LUHRMANN'S
REVOLUTIONARY FILM COMES TO LIFE

TRUTH | BEAUTY | FREEDOM | LOVE
MOULIN ROUGE!
THE MUSICAL!

SEPTEMBER 27
- OCTOBER 8, 2023

PRE-BROADWAY PITTSBURGH PREMIERE!



THE
WIZ

OCTOBER 31 - NOVEMBER 5, 2023



Mrs. Doubtfire
The New Musical Comedy

NOVEMBER 28 - DECEMBER 3, 2023

WRITTEN & DIRECTED BY
CONOR McPHERSON



**GIRL
FROM THE
NORTH
COUNTRY**

MUSIC & LYRICS BY
BOB DYLAN

JANUARY 9 - 14, 2024

THE LINCOLN CENTER THEATER PRODUCTION
Lerner & Loewe's



**MY
FAIR LADY**

Directed by
Barclay Shier

JANUARY 30 - FEBRUARY 4, 2024



COMPANY
THE SMASH HIT MUSICAL COMEDY

APRIL 16 - 21, 2024



The Kite Runner

MAY 7 - 12, 2024

BENEDUM CENTER

SEASON TICKETS 412-456-1390 GROUPS 10+ TICKETS 412-471-6930

ESTABLISHED 1996

The Difference is Trust.

TRUST & FIDUCIARY | INVESTMENTS | ESTATE ADMINISTRATION | TAX PLANNING



Smithfield
TRUST COMPANY

At Smithfield Trust Company, we support each chapter of your life, taking the time to understand the goals that you have for your legacy. Whether you are accumulating wealth, preparing for retirement, or planning for future generations, our duty is to deliver those goals through our value-added family office solutions.

We are a fiduciary that is committed to our core values.

It's what sets us apart and keeps our customer relationships strong for generations.



We invite you to experience the Smithfield Difference.

Start The Conversation

CONTACT A FIDUCIARY OFFICER TODAY

Smithfield Trust Company

20 Stanwix Street, 6th Floor
Pittsburgh, PA 15222

(412) 261-0779
smithfieldtrustco.com

BLACK BOTTOM FILM FESTIVAL

CINEMA FOR THE SOUL.

From classics to contemporary work, the Black Bottom Film Festival (BBFF) illuminates and celebrates African American cinema and uniqueness of Black people on film. The festival screens short and feature films rooted in the recurring themes of spirituality, race, family conflict, honor, duty, and the struggle of the working-class; themes ever-present in August Wilson's American Century Cycle plays.

Workshops & Discussions

Featuring



**Dr. Jacqueline
Stewart**

President of the
Academy of Motion
Pictures Museum, Host
of Turner Classic Movies



**Maya
Cade**

Creator of
the Black
Film Archive

**OCT.
27-29
2023**



THE AUGUST WILSON
AFRICAN AMERICAN
CULTURAL CENTER

TICKETS ON SALE NOW!
AWAACC.ORG



LEARN MORE

COME DANCE WITH US!

2023-24 SEASON

SUBSCRIBE TODAY AND SAVE • 3 BALLETS FOR AS LITTLE AS \$82.50!



LIGHT IN THE DARK

OCT. 27-29, 2023

BYHAM THEATER

THE NUTCRACKER

DEC. 8-28, 2023

BENEDUM CENTER

HIGHMARK 

giant eagle

CLEARVIEW



BEAUTY AND THE BEAST

FEB. 16-25, 2024

BENEDUM CENTER

SPRING MIX WITH THE PBT ORCHESTRA

APR. 5-7, 2024 | BENEDUM CENTER



CINDERELLA WITH THE PBT ORCHESTRA

MAY 17-19, 2024

BENEDUM CENTER

PITTSBURGH BALLET THEATRE

LEARN MORE AT PBT.ORG



**A SPECIAL THANK YOU
TO OUR COMMUNITY DONORS**

DIAMOND CIRCLE



GOLD CIRCLE



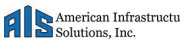
A SPECIAL THANK YOU TO OUR COMMUNITY DONORS



SILVER CIRCLE



EXECUTIVE PRODUCER'S CIRCLE



TITLE PRODUCERS

DAN AND DEBBY
BOOKER

STEPHEN AND HELEN
HANNA CASEY

THE ESTATE OF
ELEANOR DRAGAN

DOLORES KARA
IMO MICHAEL J. KARA

JOHN KEITH MAITLAND FUND OF
THE PITTSBURGH FOUNDATION/
COMMUNITY FOUNDATION OF
WESTMORELAND COUNTY

KENT AND MARTHA
MCELHATTAN

ROBERT C. MCCARTNEY

LEAD PRODUCERS

JOHN & ELIZABETH
ECKENROD

JOE & KATHY
GUYAUX

BILL & SANDY LAMBERT
IHO OUR DAUGHTERS:
EMILY & KELLY

JIM AND LISA
MCQUADE

MARK & DIANE
MINNAUGH

CAROL H. TILLOTSON
IMO ANNE C. AND
ARTHUR R. HEFREN

AVA WILSON

EXECUTIVE PRODUCERS

HAL AND KIMBERLY
BURCH

JERRY AND BARBARA CHAIT
IHO VAN KAPLAN

JOHN DICK AND TARA
BRANSTAD

JOE & KAREN
DIVITO

GUS AND ANNIE
HANNA ENGEL

MR. AND MRS.
PETER J. GERMAIN

ALEX AND SLOAN
OVERSTROM

EDWARD T. AND
SUZANNE F. KARLOVICH

GLENN &
STEPHANIE TODD



PITTSBURGH CLO DONORS

Pittsburgh CLO thanks its many community partners who have supported the Annual Campaign through July 31, 2023. Their support plays a critical role in helping CLO provide the very best in musical theatre and arts education programs throughout the region.

DONOR KEY: IMO: In Memory Of | IHO: In Honor Of | (): Number of Years

THE PITTSBURGH CLO IS GRATEFUL FOR THE GENEROUS SUPPORT PROVIDED BY THE PITTSBURGH CULTURAL TRUST

CORPORATE AND FOUNDATION DONORS

CORPORATIONS

DIAMOND CIRCLE \$25,000 AND ABOVE

#1 Cochran (17)
Dollar Bank (22)
Healthcare Realty (8)
Highmark (31)
Howard Hanna Real Estate Services (13)
Omni William Penn Hotel (14)
PNC (69)

GOLD CIRCLE \$10,000 - \$24,999

Baird (29)
Chubb Group of Insurance Companies (14)
Deloitte, LLP (17)
Delta Air Lines (7)
Educational Opportunities LLC
Giant Eagle, Inc. (19)
KeyBank (12)
Koppers (13)
Pittsburgh Steelers (3)
The Frank E. Rath - Spang & Company Charitable Trust (44)
ReedSmith (17)
UPMC (20)
Williams Coulson Johnson Lloyd Parker & Tedesco, LLC (1)

SILVER CIRCLE \$5,000 - \$9,999

84 Lumber (3)
Alco Parking (18)
AON (4)
Ernst & Young (26)
Federal Home Loan Bank of Pittsburgh
Federated Investors Foundation, Inc. (16)
First National Bank
K&L Gates, LLP (16)
KPMG (19)
MSA Safety (57)
TriState Capital Bank (2)

EXECUTIVE PRODUCER'S CIRCLE \$2,500 - \$4,999

AI Solutions
Champ Printing Company (8)

Enkompas Technology Solutions (1)
Development Dimensions International (12)
Littler Mendelson, P.C.
Post & Schell (9)
PriceWaterhouseCoopers (8)
Saul Ewing Arnstein & Lehr, LLP (6)
Schneider Downs (22)
Specialty Conduit & Manufacturing
Tudi Mechanical Systems (3)

PRODUCER'S CIRCLE \$1,000 - \$2,499

Ampco-Pittsburgh Charitable Foundation (30)
Bender Leadership Academy (5)
Confluence Financial Partners (2)
Diamonds by Rothschild (1)
HHM Insurors (19)
Mars Bank (8)
McGrath McCall, P.C. (3)
Sitko Bruno, LLC (4)
Tomayko Group Holdings

THE FOLLOWING HAVE PROVIDED MATCHING GIFTS FOR THEIR EMPLOYEES' CONTRIBUTIONS TO PITTSBURGH CLO:

3M Foundation
AT&T
Aetna Foundation
Argo Group
BNY Mellon
ChevronTexaco
Dell
Dollar Bank
Dominion Foundation
Eaton Corporation
Emerson Electric Company
EQT Foundation
Equitrans Midstream
Google
Highmark, Inc.
IBM Corporation
Koppers, Inc.
Merck
Microsoft Corporation
PNC Foundation
PPG
Thermo Fisher Scientific
United Health Group
Viacom CBS

FOUNDATION SUPPORT

Bozzone Family Foundation
The Jack Buncher Foundation

The Charity Randall Foundation
The Anne L. and George H. Clapp Charitable and Educational Trust
Cooper-Siegel Family Foundation
Edith L. Trees Charitable Trust
Ganassi Foundation
The Grable Foundation
The Heinz Endowments
Irene C. Shea Charitable Foundation
Helen M. Knepper Memorial Fund of The Pittsburgh Foundation/
Community Foundation of Westmoreland County
Massey Charitable Trust
Founders: Harris B. Massey and Doris J. Massey
McKinney Charitable Foundation
Milton G. Hulme Charitable Foundation
The Vernon C. Neal and Alvena B. Neal Fund
W.I. Patterson Charitable Fund
Pauline Pickens Charitable Trust
Robert King Mellon Foundation
Richard and Mary Weisbrod Foundation

GOVERNMENT SUPPORT

Allegheny Regional Asset District
ARP-NEA-Grants to the Arts
Pennsylvania Council on the Arts
Small Business Administration
Shuttered Venue Operators Grant Program

INDIVIDUAL DONORS

GENE KELLY PRODUCERS SOCIETY

TITLE PRODUCERS \$25,000 AND ABOVE

Dan and Debby Booker (36)
Stephen and Helen Hanna Casey (32)
The Estate of Eleanor Dragan (16)
Dolores Kara IMO
Michael J. Kara (22)
John Keith Maitland Fund of The Pittsburgh Foundation/
Community Foundation of Westmoreland County (46)
Kent and Martha McElhattan (1)
Robert C. McCartney (42)



PITTSBURGH CLO DONORS

LEAD PRODUCERS

\$15,000 - \$24,999

John & Elizabeth Eckenrod (18)
Joe & Kathy Guyaux (22)
Bill & Sandy Lambert IHO our
daughters: Emily & Kelly (24)
Jim and Lisa McQuade (6)
Mark & Diane Minnaugh (19)
Carol H. Tillotson IMO
Anne C. and Arthur R.
Hefren (13)
Ava Wilson (7)

EXECUTIVE PRODUCERS

\$10,000 - \$14,999

Hal and Kimberly Burch (7)
Jerry and Barbara Chait IHO
Van Kaplan (6)
John Dick and Tara Branstad (5)
Joe & Karen DiVito (12)
Gus and Annie Hanna Engel (5)
Mr. and Mrs. Peter J. Germain (17)
Alex and Sloan Overstrom
Edward T. and Suzanne F.
Karlovich (20)
Glenn & Stephanie Todd (8)

PRODUCING DIRECTORS

\$5,000 - \$9,999

William P. Anderson (23)
Bellin/Coontz Family Giving
Fund (5)
Elaine M. Bellin and Phyllis D. Coontz
IHO Patty Maloney (5)
Mrs. Patti Matty Blenko IMO
Walter Blenko (41)
Laurel Dagnon and
Patricia Jarrett (9)
Jeff and Lesley Evancho (3)
Patrick A. Gray (3)
Emilie Hammerstein (1)
Vicki C. Henn (6)
Michael and Evonne Henry (5)
Deedra Kay (6)
Laura Penrod Kronk (2)
Cate Linn (6)
Nicholas and Anne Liparulo (11)
Mr. Allyn J. Lynch (11)
The Malandro Family (5)
Tim McVay and David Bush (5)
Mr. and Mrs. Alexander Overstorm (3)
Robert and Christine Pietrandrea (8)
Luke and Allison Sizemore (9)
Arlene & Barry Sokolow
IMO Anna & Nicholas Zelkovic (21)
Specialty Conduit &
Manufacturing, LLC (11)
Justice Debra and
Stephan Todd (15)
Dennis and Diane Unkovic (15)
Travis and Nikki Viglione Williams (8)
James R. Wiltman (18)
Tim & Linda Zimmerman (35)

PRODUCERS

\$3,000 - \$4,999

Anonymous
Pritam and Binu Advani (6)
Richard & Mary Ellen Anzaldi (2)
Dr. Vitasta Bazaz-Sheen Sehgal -
Fund IMO Dr. Kuldeep Sehgal of
The Pittsburgh Foundation (20)
Stephen and Dana Bloomberg (10)
Bryan and Cindy Cipoletti (2)
George and Ada Davidson (39)
Phyllis and Tom Davidson (2)
Jerry and Mimi Davis (16)
Joan Clark Davis (26)
Jane & Michael Dixon
IMO Cheryl Young (24)
Mr. and Mrs. Richard Dougherty (7)
Melinda and James Edwards (8)
Cathy and Randy Emanuelson (4)
Jeff and Jennifer Erdely (2)
Kim & Curt Fleming (23)
Dr. Edward L. Foley (25)
David and Deborah Freeman (11)
George and Daphna Gans (7)
Mr. & Mrs. Robert A. Harlan (21)
Leon Hoffman (1)
Tom & Chris Kobus (27)
Irwin and Cher Kotovsky (2)
Dr. Diane Beynon Landers (9)
The Kubica Family (4)
John and Lisa Lemmex (6)
Raymond & Karen Love (21)
John & Cathy Mary (12)
Michael and Wanda McGarry (8)
Janice and Ernie Meade (9)
James Mims (1)
Ed and Deb Moretti (6)
Kari Murphy (1)
Laurie Burkhardt Mushinsky (20)
Jordan and Laura Nicholas (6)
The O'Loughlin Family
Charitable Fund (22)
Leah and Paul Ohodnicki (9)
Bob Powell (3)
Roseann Rosnick (3)
Jim and Linda Rumbaugh (2)
Julie Sieger and George
Johnson (3)
Walter L. Startzel
IMO Mark Fleischer (14)
Mark and Tammy Steele (26)
Gary and Debbie Truitt (20)
Melissa Ungar (12)
Mr. & Mrs. William H. Van
Duzer (25)
Tom and Lynne
VanHimbergen (3)
Mr. & Mrs. W. Robert Wells (35)
Dr. Audrey Zelkovic
IMO Anna & Nicholas Zelkovic (10)

ASSOCIATE PRODUCERS

\$1,500 - \$2,999

Anonymous
Jen Bohland-Anhalt &
Joshua Anhalt (13)
Michele and Pat Atkins (2)
Meghan and Jose Barrera (10)
Joyce Bender (8)
Anthony Benevento (1)
Paul E. Block (21)
Beatrice Bonfiglio
IMO Alfred Bonfiglio (26)
James P. Cassaro (3)
Adam and Patricia Davidson (19)
Stacy and Christopher Dee (11)
Kristen Dettlinger (1)
Patrick and Mary Lynn Dugan (6)
Teresa and Christian Farls (1)
Wynne Rooney Fedele
IMO George W. Rooney, Jr. (14)
Holly and Mark Fleischer (3)
Warren R. Fugate (4)
Mrs. Lori Giordano-Bosiljevack (2)
Charlie and Patricia Gray
IMO the administrative and
production staffs (33)
Richard S. Hamilton Foundation (21)
George and Rita Hathaway (2)
Paul and Colleen Hennigan (2)
Leslie Hyde (4)
Margaret S. Izzo
IMO Todd Izzo (3)
Van Kaplan and MJ Brennan (8)
Greg and Debbie Knowles (8)
In loving memory of
Dr. Susan Cohen
(from Christy and
Aaron Kolko) (4)
Angela and Scott Langill (1)
Lucia Lazzara-Goodrich (4)
Fred and JoEllen Leech (9)
Richard and Lynn Lipovich (8)
Margaret A. McLean and
Stanley Yorz (17)
Scott & Jennifer Neill (19)
Randall Olson (10)
Paul and Paula Palmer
IMO Charlie Gray and
Van Kaplan (20)
Jean Marie Perry (9)
William Perry (3)
Elisa and Terry Poole (2)
Georgiana & Bob Riley (5)
Susie and Jerry Robinson (23)
Lori Ann Rushie (2)
Eric and Michele Schaffer (17)
Ken and Toni Senator (31)
George and Helen Spalaris (11)
Sterling Family Fund of The
Pittsburgh Foundation (10)
Marcia and Louis Swartz (7)
Betsy and Tom Teti
IMO Charles and Anne Lynn (25)
LaShawnda A. Thomas (1)
Joann L. Tissue (9)



PITTSBURGH CLO DONORS

ASSOCIATE

PRODUCERS CONT'D...

Elizabeth Toole
IMO Mrs. Michael Kutsenkow (4)
Carla J. Vrsansky, Esq. (18)
Mr. & Mrs. Richard J. Voller (36)
Sally Wade (36)
Melvin Washington (3)
Greg and Lori Weimer (1)
Mr. & Mrs. W. Robert Wells (35)
Bob Williams (22)
J. Dennis Wilson (6)

PATRONS

\$500 - \$1,499

Anonymous
Anonymous
IHO Dan and Debby Booker (3)
Kathryn and James Bann (9)
Dr. and Mrs. Ivan Baumwell (11)
Mrs. Phyllis Bertok and
Mr. Rich Lopretto (10)
George Bielich (7)
Michael and Carol Bleier (20)
Charles & Shelly Bossong
IMO Charlotte (24)
Debbie and Jim Boughner (4)
Jim and Kristin Brennan (10)
Ellen Carabin (13)
Mrs. Roland (Nanette)
Catarinella (64)
Heather M. Chappars (13)
Tom and Dale Christopher (20)
William and Jennifer Chufó (3)
Jen and Mike Dodge (5)
Merrill and Theresa Druggs (19)
Carl Dudeck, Jr. (14)
Theresa B. Fedio (24)
Jeffrey & Karen Fink (27)
Galatis Family (3)
Alvaro and Sandra
García-Tunon (17)
Amanda Godley and
Ken Fisher (2)
Flyspace Productions (1)
Rev. Dr. James R. Gretz (37)
Richard and Ruth Ann Hess (56)
MAC and George Hoover (5)
The Howe Family (3)
Jeff Irwin, D.D.S (36)
Thomas R. Johnson
IHO Joe Jackson (7)
Mary Kellam
IMO Robert C. Milsom (5)
Briana and Jeff Kent (2)
Arthur Kerr (42)
Kimberly Kifer
IMO Angelo Joseph Hardi (6)
Dusty Elias Kirk
IHO Dan Booker and
Helen Hanna Casey (1)
Christy Kobus (10)
Diana M. Kobus (4)
Angela M. Kokovich (4)
The J & MA Krolikowski Fund (11)

Jeff and Rachel Lizik (8)
Lewis and Megan Lloyd (1)
Brandon Marzke (1)
Jamie McGovern (2)
Dr. & Mrs. Brendan McGuire (6)
Richard and Nancy McKnight (34)
Catherine Mechling (26)
Marcia Metelsky (1)
Mrs. Joan Milsom (21)
Marcia S. Morton (49)
Jeff & Patty Nayhouse (22)
Mr. & Mrs. Richard L. Neish (12)
Mr. and Mrs. James O'Neill (24)
Todd and M'Lisa Oravitz (4)
Christina O'Toole
IMO Paul & Helen Triko (12)
Tara and Eric Park (8)
Steven and Helen Patricia (15)
The Pollon Family
IHO Vanessa Candrea (19)
Christopher and Mary Rawson (9)
Harold and Leslie Reidenbaugh (2)
Dr. Keith & Celeste Reisinger (8)
Leslie and Peter Robinson (17)
Giulia Robyn (4)
Michael and Mary Ross (2)
Iva and Gene Saraceni
IMO our daughter,
Elyse Jeanne Saraceni (13)
Susan Sargent (8)
Clyde Schmertz (5)
Bob and Lori Shelow (6)
Mr. & Mrs. James C. Stalder (6)
Randi L. Starr (7)
Richard Stewart (5)
Richard and Linda Stringert (12)
The Stoffel Family
IMO Dale Stoffel (10)
Gayle Tissue and
Yiannis Kaloyeropoulos (1)
Charles and Sue Turner (32)
Reverend Thomas A. Wagner (29)
Michael and Lisa Walsh (21)
Ramona Ward (2)
Mr. and Mrs. Thomas E. Wash (16)
Mr. and Mrs. Robert W.
Wickerham (33)
Julie Wiles (9)
Matt Williams
Judy Wolfe (2)
Patti and Randy Wynkoop (14)
The David Zeve Fdn of the Jewish
Community Fdn of Greater Pgh
IHO Helen Hanna Casey (1)

SPONSORS

\$250 - \$499

Anonymous
Anonymous
IMO Mary Helen Fuhrer
and Frank Fuhrer
Dr. & Mrs. Lee Agostini (31)
Joann S. Anderson (14)
Nancy Arshoun (4)
Mary and Len Bach (9)

David Balint
IHO Kevin McMahon (1)
Courtney Barthelemy
IHO Brett and
Honour Barthelemy (3)
The Bartosh Family (6)
Dr. Sheila Bigelow, D.O.
and Family (5)
Joan Margaret Blasinsky (13)
Robert C. Blough, Jr. (6)
Pamela Bolkovac (10)
Mr. Edward E. Clever
IMO Barbara J. Clever (14)
Tom, Liz & Shannen Cloherty (2)
Michele Rone Cooper (17)
Tony Cortazzo and
Sara Louik Gluzman (1)
Kristen Dettlinger (1)
Elizabeth Dietrich
IHO Lexi Patterson (1)
James and Theresa Doerfler (19)
Steven Doerfler (5)
John Dreistadt (2)
Natalie Earls (4)
Elliot Counseling (1)
Dr. Peggy Farrah
IMO brothers, Sonny &
Bobby Farrah (13)
Margaret Figgins
IMO David F. Figgins (43)
Mr. and Mrs. Edward
Fortwangler (12)
Christopher Fox and
Shaun Tomaszewski (6)
Katherine and John Freed (14)
Gary and Michele Gatto (1)
The Clem Gigliotti Jr. Family (14)
Cheri and Kevin Gmitter (6)
Mr. & Mrs. Kurt Gottschalk (18)
David Gotwald & Peter Frazen (1)
Cindy Graves (10)
David Hammerstein (1)
Amanda Colleen Harris (9)
Robert D. Harrison (5)
Andrew and Darlene Hasley (2)
Dr. Linda Haynes (11)
Amy and Paul Hoback (8)
Mt. Lebanon Community
Foundation's Dr. David &
Louise Horvath Family
Fund (5)
Mr. and Mrs. Ben Andrew Huber (3)
Lawrence R. John, M.D. (8)
Craig and Debbie Johnson (6)
Diane Johnson (7)
Russell W. Johnson
IHO Eileen B. Johnson (3)
Mr. and Mrs. William B. Kent
IMO Peggy Paul (8)
Roy and Lori Kern (4)
Gary and Betty Kessler (13)
MaryAnn & Bill King (23)

PITTSBURGH CLO DONORS



Maria Kovacs (8)
Stephanie Krick (11)
Joan E. Lavery
IMO John P. Lavery (24)
Mr. and Mrs. Shawn Leifheit (11)
David M. and Joyce E. Lipkin (9)
Jennifer Long (3)
Tricia and Johanna Loughran (3)
Tracy Lunt (1)
Mr. & Mrs. Robert Madar (21)
Richard Marciniak (17)
Dr. and Mrs. James McCann (13)
Mr. and Mrs. Samuel McClure (11)
Michael and Jacqueline
McConnell (13)
Lee and Michele McCracken (6)
Dr. Graham and
Elizabeth McIntosh (6)
Mr. and Mrs. Robert McMahon
IMO Bill and Norma Dinsmore
& Ruth McMahon (16)
Mary Ann and Terry Mohr (11)
Carroll and David Morrison (10)
Ms. Bonita Mullaugh (11)
The Murray Family (9)
Tim and Carol Murray (7)
Amy and Mike Nerone (2)
David & June Nimick (26)
William and Audia Otto (14)
Chris and Diana Patella (1)
Carol Patrick (9)
Jim and Maria Pieffer (21)
Warren and Sharlene Purring (10)
Jeffrey Hertweck and
Christine Prince
IMO Mary Ann Hertweck (4)
Edward and Anna Marie Rice (19)
Mona and Bob Riordan (28)
Mr. and Mrs. Byron W. Rosener III (13)
Mrs. John M. Sadler (11)
Paul Schamer (9)
Carl W. Schultz (5)
Emily Busse Schwartz
IMO John and Maggie Busse (2)
Mary Seghi (24)
Victoria and David Serafini (18)
Vincent J. Siciliano
IMO John A. Siciliano (38)
Sal and Maria Sirabella (25)
Ira and Lucy Snyder
IHO Allan Snyder (7)
Susanne and Ron Sommer (11)
Kathy and Alan Stehman (11)
Mr. and Mrs. David R. Steinberg (23)
Richard Stewart (4)
Cait and Spencer Sturgeon (2)
Mitchell Taback
IMO Barbara Taback and
George Rooney (5)
Bob and Brenda Tate (13)
Wayne Vincent Thompson (2)
Reverend James R. Torquato (13)
David M. Turrentine
IMO Shirley M. Turrentine (11)
Joseph & Bernadette Valero (7)

Becky and Jim Vesely
IHO Scarlett Vesely (5)
Dr. Joann Bevilacqua Weiss
IMO Dr. Oliver F. Weiss (26)
Mary Lee and Chuck Wetmore (7)
Henry and Rosemarie Wetzel (9)
Michael and Shelby Wherry (6)
Dick and Margaret White (17)
Nancy and Will Willems (11)
Dr. John & Valerie Williams (3)
Mr. John C. Williams, Jr. (27)
Al and Peg Williams (3)
Shirley Wilson (16)
Tom Wyse, Jr. and
Robert A. Neft (27)

LIMELIGHTERS

\$100 - \$249

Anonymous
Anonymous
IMO Richard S. Mowl Jr.
A. L. Abramovitz (9)
Forbes and Kathryn Adams (1)
John Aiello (7)
Ted and Donna Alexovich (7)
Elizabeth R. Amber
IMO Wayne Amber & James
Emswiller, CAS (10)
Michael and Karen Amrhein (4)
Charles and Veronica Anchors (12)
Kristen Anderson (1)
Mr. & Mrs. Richard F. Andracki (7)
Pamela Andreyko (1)
Jere and Rozan Antonetti (14)
Sandy Artzberger (4)
James R. Atwell (9)
George W. Ayres
IMO Joyce Davis Smith (6)
Cliff and Susanne Baker (7)
Heidi G. Balas (1)
Debra Baldesberger (9)
Marlynn Baldo (3)
Leroy and Ginger Ball (3)
Robert Banos (3)
Mr. and Mrs. Richard Barnabei (1)
Mr. Gerald Bartolomucci (5)
Bob and Megan Bashaw (1)
Cissy Bassett (3)
Robert Bates (4)
Diane Berquist
IMO Michael J. Berquist, Esq. (5)
Beth and Mike Berrigan (1)
Lisa Black (1)
Mr. David Blackmore (19)
David A. Blauch (2)
Weia Boelema & Ken Manders
IMO Jeanne Manders (14)
Sharon Bono (1)
W. Dennis and Penny Bossick (1)
Michael and Maxine Botti
IHO Mike Botti (6)
Kathleen Boykin (33)
Scott Branvold and
Lynda Davidson (11)
David and Karen Brienza (6)
Trish Breuer (1)
The Brown Family (3)
Mary Patricia Brown (15)
Mr. and Mrs. Steve Brown (2)
Kirsten Bruder
IMO Alice and Kurt Kerner (1)
Mr. and Mrs. Edward E.
Brunins (8)
David Dean Brzozowski
IMO Victoria Brzozowski (3)
David and Sonya Buerger (7)
Harold B. Burech (2)
Gary and Joyce Butler (4)
Tony and Vicki Caldwell (2)
Dean Caliguire (2)
Mr. Russ Carley (1)
Dan and Doreen Casey (8)
Raymond W. Castle (1)
Helen Cestra (1)
Larry and Debra Chafin (3)
Marie Charles
IMO Carolyn Marie Tady (5)
Frank and Theresa Cicci (3)
Gary and Jo Ann Claus (30)
Carolyn Clevenger (11)
Nat and Diane Cohen
IHO Jim Mercer (18)
Scott Colbert (1)
Joy Cone Company
IMO Joseph George (16)
Mr. and Mrs. James J. Conte (2)
Dr. and Mrs. Joseph G. Coroso (23)
Raymond Cotter (2)
Edward Crawford (1)
Fred and Joy Cullen (10)
Janet Cummings (16)
Richard and Suzanne Currie (5)
Bill and Sue Cutri Fund of the
Pittsburgh Foundation (3)
Mrs. Mary Lou D'Ambrosio
IMO Lynn Vuocolo (2)
Catherine M. Daily
IMO Hazel P. Daily (27)
Stacey Daily
IMO John Daily (1)
George and Kathleen Daniels (6)
Matt and Paula Davey (4)
Christopher and
NancyEllen de Fiebre (6)
Cassie and Susan DeBacco (1)
Dr. and Mrs. Tim DeBiasse (11)
Alice DeCaria (2)
Michael DeKlaven (2)
Diane Deluca (2)
Sara and Joe DeLucia (4)
Edward H. DePasquale
IMO Henry DePasquale (5)
Abby DeRiggi (1)
Ronald Dewalt and Kevin Zadeh (8)
Peter and Melba Dibble (3)
Mike and Mary Lynne Dishaw (2)
Nick and Michele Ditullio (7)
Ann Dixon (9)



PITTSBURGH CLO DONORS

- Beth Ann Docherty
IMO Janet M. Docherty (9)
- John Dreistadt (3)
- Jeanne Drennan (2)
- Mr. Paul S. Drost (22)
- Mr. and Mrs. Patrick Dunphy (27)
- Michael and Peggy Dvorznak (1)
- Howard and Jan Engelberg
IMO Joan and Sam Kamin (4)
- Mike & Margie Evans (9)
- Frank and Lisa Falcione (2)
- Family House friends - Anne,
Beth, Chuck and Sally
IMO George Rooney (1)
- Debby Fannin (1)
- Mark and Carolyn Farabaugh (11)
- Suzanne Faris (6)
- Jacqueline Fennell (3)
- Adrian and Geri Fenton (10)
- Bob and Amy Ference
IMO Marie Ference (4)
- Armand Ferrara (3)
- Emily Ferri
IMO Edward and Carole Ferri (35)
- Susan Fertig (2)
- Kristian Feterik (3)
- Mark and Linda Fialkovich (11)
- Dighton and Patricia Fiddner
IMO John Sitton (1)
- Mr. and Mrs. Robert Fiedler (12)
- Tom and Sue Finegan (7)
- Shelley and Don Fink (6)
- Sarah Finney (3)
- Jim and Paula Fiorucci
IMO Carol Fiorucci (17)
- Mr. & Mrs. William Flanagan (7)
- Amber Flevaris and
Johnathan Roppo (3)
- Mike Flowers & Diane Jefchak (5)
- Tina and Christopher Flowers
IMO Spenser Flowers (11)
- 5 Js (16)
- Mr. Gene S. Forsythe (12)
- Mr. & Mrs. Paul K. Fox (30)
- Fracioni Families
IMO George Rooney (1)
- Kenneth T. Frankenberg (11)
- John and Susan Frantz (1)
- Friedlander Family (9)
- Linda Froehlich
IMO Richard D. Froehlich (3)
- froggy (2)
- Michael D. Gaber (1)
- Henry Galaska (2)
- Ben and Michelle Gallagher (2)
- John and Sandy Gandolfi (3)
- Judy Garcia (4)
- Shirley Gaudette (1)
- Mr. and Mrs. Gerard Gastonguay (6)
- Damian and Hayah George (8)
- Mr. and Mrs. William D. Ghrist III (20)
- Amy Gilliland (2)
- Meryle Gitto (2)
- Cheri and Kevin Gmitter (7)
- Angela Goetz (1)
- Melissa Goodfriend
IMO Jeremy Dentel (4)
- Tom and Cathy Gothie (18)
- Stephen Graf (6)
- Gregory Granger (1)
- Jason Gray (5)
- John Greenlee
IMO Eleanor S. Greenlee (3)
- Eddie Grimes IMO Greg Triko (8)
- Vanessa Guenther (1)
- Mark M. Gudalis (5)
- Teresa Mrozoskii Halbedl (2)
- Denise Hampson (3)
- Ms. Paula Heil (6)
- Randall and Barbara Henry (4)
- Betty Hess
IMO Darrell Hess (18)
- Karen Hessel (1)
- Diane C. Hildenbrand (3)
- Mary and Leo Hitt (4)
- Janice L. Hixson (6)
- Diane Hoak (2)
- Lois M. Hoffman
IMO Mr. and Mrs. Edward
Hoffman (21)
- Pauline and Joan Hoffman (7)
- Daniel and Vicki Holthaus (11)
- Larry and Denise Hoover (13)
- Christina E. Horton (5)
- Brian Horvath (5)
- Joanne Horvatic (1)
- Mr. Bruce Hostler (14)
- Charles Hunnell (21)
- Mr. and Mrs. Patrick J. Hurley (20)
- Camille Huzzard
IHO her musical-loving
daughter, Emma (2)
- Thomas Isaac (2)
- Mr. and Mrs. Ronald E. Johnson (9)
- Dr. & Mrs. Robert T. Jones, Jr. (35)
- Ms. Sherdina Jones (6)
- Alyson and Michael Joyce (1)
- Elaine Kaczmarek
IMO Dorothy Procupp and
Joanne Readshaw (20)
- Jim and Cheryl Kassner (3)
- Thomas and Michelle Kearns (4)
- Sue A. Kelly (1)
- John and Nita Kellum (2)
- Mrs. Joseph Kenney (19)
- Arthur Kerr (43)
- Dr. Gloria Kerr
IHO Trevor Runco (9)
- Debra and Jack King (13)
- Michael and Pamela King (1)
- James R. Kirsch
IMO Audrey K. Kirsch (13)
- Dr. and Mrs. Andy Kiser (2)
- Lynn and Milton Klein (3)
- Diane Knechtel (20)
- Dr. Stephanie Kobil (27)
- Christy Kobus (10)
- Patty Kokel (1)
- Lou M. Kramer, Jr.
IMO Louis Kramer, Sr. (10)
- Shawn and Judith Kramer (5)
- Mac and Eileen Kravitz (16)
- Margaret and Dan Lackey (6)
- Joan Lacomis (3)
- Paul and Leigh Laird
IMO George Rooney (1)
- Kathleen Lamb (17)
- Emily Lambert (1)
- Debra Larison (19)
- Mr. & Mrs. Irving J. Latterman (38)
- Jeff and Amanda Laubenthal
IMO Ronald Yant (1)
- Marco Leal and Ana Plaminha (2)
- Neil and Sharon LeJeune (10)
- Linda Leonhardt (1)
- Dirk M. Lesnett (1)
- Marguerite Lesniak (2)
- Jacques and Rich Levine (4)
- Jonathan Levinson (1)
- Mr. and Mrs. Craig C. Linner (2)
- Jerry Lippiatt (4)
- Margery J. Loevner (4)
- Angela J. Longo (9)
- Kellie Loudin (5)
- Kate Loy (3)
- Jeff and Dr. Jae Luck (4)
- Ronald & Christine Lunardi (23)
- Robert Luttner (1)
- Sloan Mackey
IMO Dennis Wilson (1)
- Thomas Majeski (2)
- Carole Malik and
Marlene Campas (2)
- Mr. & Mrs. Gregory D. Maloney (29)
- Marianne Maloney (2)
- Kay Manecke (9)
- Patricia Manni
IHO Regina Manni (2)
- Kelly Manning (1)
- Carol Manspeaker (1)
- Janet K. Manuel (15)
- Fred Maradei and
William Gedman (3)
- Elizabeth Marshall (4)
- Jenny and Roger Matz,
IMO Dr. and Mrs. A. J. Niehaus
& Gregory Matz (4)
- David Maxwell (35)
- Paul C. McBeth, III (3)
- Larry and Michaelene
McCahan (31)
- Ms. Sharon L. McCarl (11)
- Mrs. Neva McClymonds
IMO John McClymonds (9)
- Bernice McCort
IMO Robert McCort (13)
- Karen McCrary (2)
- Mark and Patricia McGinley (4)
- Skip McGreevy
IMO Teresa McGreevy (15)
- Heidi L. McMichael (1)
- Paul and Melissa McLane (4)
- Adnana Mehic (7)
- Mr. and Mrs. Daniel Meier
and Family (6)

PITTSBURGH CLO DONORS



Bernadette Meyers (4)
Robert and Lynn Mialki (7)
Dr. Paul and Linda Mihalek (15)
Joseph and Gina Milcoff (5)
Robert and Amber Miles (1)
DJ and Val Miller (1)
Emily Lynne Miller (1)
Laurie Miller (11)
Stefanie Morosky & Clinton Kelly (4)
Kathleen Morouse (2)
Miriam & Todd Moules (17)
Robert & Diane Murphy (13)
Madeline M. Napoli
IMO Robert Napoli (19)
Mr. & Mrs. Robert G. Naugle (4)
Richard Neff (2)
Suzanne S. Newpher
IMO Rev. Robert J. Newpher (9)
William Nimick (4)
William Noel (3)
Kimberly Noonan (4)
Mrs. Audrey Novak (15)
Dan and Lisa Nydick (16)
Alice Oakes (5)
Nancy O'Dell
IMO Hellen Lee Henderson (1)
Cathy Opsitnick (13)
Thomas M. Pakula (1)
Ed & Lisa Palombo (7)
Charles and Betty Paoletti (4)
Barbara Patton (2)
Jo-Ann Paulenda (7)
Ms. Lynley Pavkovich (5)
Kathy & John Pechunka (15)
Deborah Peltier (1)
Rose M. Perryman (22)
Vincent Petrocelli
IMO Carole L. Petrocelli (17)
Jennifer L. Pfister (2)
Mark F. Piedmonte (5)
Paul S. Pieffer and
Janice Hlad-Pieffer (15)
Mr. and Mrs. Stephen F.
Piskurich (25)
Mr. & Mrs. Donald J. Platt (26)
Cindy & John Pokora
IMO Lil Sciuilli (12)
Kathy Jo Pollack (18)
Duane and Bernadette
Ponko, CPA (14)
Barry B. Premoshis (22)
Pamela R. Prisk (1)
Barbara Provenzano (18)
Jim and Maura Puchany (4)
Quality Repair Services, LLC (10)
Bridget Quinlan (2)
Sue Quinn (4)
John Ranalli (1)
Joshua and Brielle Reicks (4)
Pam Reiger and John Emry (8)
Donna Repka
IMO Michael Carasella (24)
Edward M. Reppa, Jr. (16)
George Reuss (8)
Mr. & Mrs. Frank Ricco Jr. (13)

Carol Richardson
IMO Josephine M. Schmitt (6)
David and Sylvie Rigdon (5)
John Roach (2)
Gary and Cookie Roberson (2)
Sally Roddy - The Voice Studio (8)
Kristen Rohr (1)
John and Joni Roland (13)
Al Rose
IMO Diane Rose (16)
Bobbi Jo Rosol (2)
Janis Rossetti (1)
Don & Mary Rugh (20)
Mr. and Mrs. Jeffrey Rutledge (6)
Lana Saksun (2)
Frank and Denise Salopek (8)
Jen and Jeff Sarabok
IMO Ginny Sarabok (2)
Lisa Scales (1)
Dianne Scansaroli (9)
Mark Scappe (5)
Mr. and Mrs. Daniel C. Schetley (10)
John C. Schlotterer (4)
Penny Schnarrs and
Melissa Tavarez MD (3)
Edward R. Schneider (3)
Mary C. Sellers (1)
Tina M. Senules (12)
Victoria and David Serafini (19)
Brian Sergi-Curfman (1)
Steve and Linda Sesack (1)
Karen Seyler (1)
Madalaine T. Shigle
IMO Therese "Grammy" Sciuilli (4)
Taitia Shelow (3)
Mark and Susan Shopland (4)
Ronald and Linda Siegel (2)
Rhoda F. Sikov
IMO Seymour A. Sikov (27)
Mr. and Mrs. G. David Sivak (3)
Amy Skena
IMO Joseph Dennis Wilson (1)
Jacob and Rula Skezas (9)
Gary Sladick (1)
Bob and Chris Sloboda (8)
Charles and Ruth Smith (8)
Ruth Snyder (1)
Tom and Karen Sochacki (2)
Susan Sorbo (11)
Deanna and Matthew Speranza (1)
Daniela Spitzer (6)
Mr. & Mrs. Marlis Stacy (9)
Jennifer Stanton
IMO Mary Donaldson (3)
Carol M. Stein (18)
Mr. & Mrs. Gregory A. Stein (35)
Rona & Gary Sterling (22)
Joe Stevens (8)
Jenny and Kelly Stewart (6)
Troy and Julie Stiffler (1)
Mr. and Mrs. George S.
Stipetich (2)
Dennis and Allison Stombaugh (6)
David Stutzman (5)
Janet L. Templer

IMO Carol R. McAuley (23)
Dick and Jana Thomas (21)
Mr. and Mrs. Willard J.
Tillotson, Jr. (2)
Karen F. Tissue
IMO Lillian Cisek (8)
Mr. & Mrs. Regis Tomsey (25)
James and Elizabeth Toole (1)
The Toth Family
IMO Amanda MacDonald Leech
Jeanne Treasurer (2)
Martin Trettel (1)
George and Pia Trew (13)
Nancy and Gary Tuckfelt (2)
IMO Jay & Renee Minsky
Scott Turnbull (1)
Catherine Turner (4)
Keith and Carol Unitas (2)
James and Dorothy Valimont (10)
Matt Vanek (1)
Jane A. Vaselelak (4)
Mr. and Mrs. Anthony L. Venci
IMO Eleanor and Douglas
Naylor (6)
Matt and Anne Veres (4)
Bruce Vermeychuk (1)
Marilyn and Joseph Vettorazzi (9)
Jennifer Fulmer Vinson
IMO Marilouise "Mel" Michel (3)
Nancy Vrabel (10)
Dan and Lee Ann Wahl (4)
Leslie James Ward (9)
Christine Washington (1)
Warren & Shirley Wenner (7)
Patricia Wensyel (1)
Karen and Fred Wheeler Jr. (2)
Dick and Margaret White (17)
Peggy C. Whitehurst (7)
Pete and Jean Wicks (17)
H. Wayne and Joyce A. Wiester (28)
Donna Wilson & Stephen Spargo
IMO Lorraine DeWitt &
IMO Gloria Spargo (2)
Mr. David E. Winklmann (8)
Janice Wirth (13)
Denise Wolbert (1)
Linda Wright (16)
Morgan Yates IMO M. L. Reed (3)
Joseph Yuhasz (3)
Penny Zacharias and Kirk Burkley (3)
Ronald & Deborah Zanetti
IMO Mary Hartnett (1)
Lisa and Erik Zettelmayer (1)
Nina Zetty (2)
Dr. Paulina F. Zunino (5)
Susan Stanish Zurawsky (2)



PITTSBURGH CLO DONORS

PITTSBURGH CLO WOULD LIKE TO THANK AND RECOGNIZE THE FOLLOWING MEMBERS OF THE LEGACY LEGENDS SOCIETY:

Paul Block
Jim Gretz
Robert C. McCartney
Paul and Paula Palmer
Jeffrey Lawrence Pollock Esq.
Sally Wade

For more information on the Legacy Legends Planning Giving Program, please visit our website at PittsburghCLO.org

Pittsburgh CLO thanks the CLO Ambassadors for their generous support of the CLO Performance Season and CLO's Education and Community Engagement Programs.

Listing is complete as of 07/31/23. Every attempt is made to ensure that listings are correct, but if there are errors or omissions, please contact the CLO Development Office at 412-281-3973, ext. 4. To become a Pittsburgh CLO donor, please visit us online at PittsburghCLO.org, or send your contribution to:

**Pittsburgh CLO
Development Office
719 Liberty Avenue
Pittsburgh, PA 15222**



Pittsburgh
CLO

CELEBRATING MUSICAL THEATER

LEGACY LEGENDS

Pittsburgh CLO has introduced the CLO LEGACY LEGENDS to recognize the dedicated supporters who share a vision for Pittsburgh CLO's future. Their bequests and other planned gifts will have a profound and lasting impact on the artistic quality of the work you see on our stages.

If you would like to join us in building that future, please consider becoming a CLO LEGACY LEGEND by naming Pittsburgh CLO as a beneficiary of your will or trust, IRA or other retirement plan, life insurance policy, life income, or other planned gift. Designating Pittsburgh CLO is not a complicated process and can often be done with a phone call to your investment adviser.

If you have already named CLO in your estate plans – let us know and we will add your name to our CLO LEGACY LEGENDS and include you in special recognition and benefits.

**For more information, please contact Wynne Fedele,
Director of Development at wfedele@pittsburghCLO.org
or call 412-281-3973 x232.**

SPECIAL THANKS



The CLO Gallery of Heroes in-school program is sponsored by The National Endowment for the Arts, Highmark Blue Cross Blue Shield, The Massey Charitable Trust, The Pittsburgh Foundation, Allegheny Foundation, Healthcare Trust of America, Inc., Cooper-Siegel Family Foundation, Laurel Foundation and UPMC.

The Gene Kelly Awards are sponsored by The Michael J. Kara Family, Deloitte, the Gismondi Family Foundation, Highmark Blue Cross Blue Shield, PNC, and by the CLO Ambassadors.

The Charles Gray Award for Special Achievement in Arts Education is underwritten by the Roy A. Hunt Foundation.

The CLO New Horizons is made possible in part by UPMC, Highmark Blue Cross Blue Shield, The Pittsburgh Foundation, Allegheny Foundation, Bellin/Coontz Family Giving Fund, Bender Consulting Services, Cooper-Siegel Family Foundation, PriceWaterhouseCoopers and the Edith L. Trees Charitable Trust.

Stars of Pittsburgh CLO's Summer Season dine at the Grand Concourse Restaurant at Station Square.

The Official Hotel of Pittsburgh CLO. *The Official Airline of Pittsburgh CLO.* *The Official Car Provider of Pittsburgh CLO.*

EQT New Musicals Commissioning Fund

The purpose of the EQT New Musicals Commissioning Fund is to identify and commission writers both in Pittsburgh and across the country to write new musicals for the Pittsburgh CLO Summer Season, Cabaret and Gallery of Heroes program.

2023 SUMMER SEASON PITTSBURGH PARTNERS



Your Tax Dollars Hard at Work.

The Allegheny Regional Asset District (RAD) invests in our region's quality of life through financial support of libraries, parks & trails, arts & culture, regional attractions, sports & civic facilities, transit, and local municipal services with proceeds from an additional one percent county-wide sales tax.

Visit RADworkshere.org for more information.

Worth Every Penny. 



One Mission.
One Passion.
One Purpose.

At MSA Safety, we build bridges with our surrounding communities through charitable giving and volunteer work. We do this so that our communities – and MSA's business – are all *Fit for a Bright Future!*



MSA is hiring! Join our team and help us protect the lives of workers around the world.

MSAsafety.com/careers

Pittsburgh Post-Gazette®

**TOP
WORK
PLACES
2022**



Pittsburgh
CLO

CELEBRATING MUSICAL THEATER

DID YOU KNOW... **THE PRICE OF YOUR TICKET ONLY COVERS HALF OF OUR EXPENSES FOR THIS SHOW?**

We don't gamble. We rely on donations and on the support of people like you to carry us through our Summer Series and beyond. Help us continue to make musical memories ***FOR PITTSBURGH, BY PITTSBURGH, AND IN PARTNERSHIP WITH PITTSBURGH.***

THE SHOW MUST GO ON! GIVE A GIFT TODAY TO KEEP OUR CURTAIN RISING!



OR VISIT
PITTSBURGHCLO.ORG

For more information about our levels of giving, please visit our website or call our Development Office at 412-281-3973 ext. 4

The tax deductible amount of your contribution is limited by the excess of your contribution over the value of certain benefits provided by CLO. For more information, visit pittsburghCLO.org. A copy of the official registration and financial information may be obtained from the Pennsylvania Department of State by calling toll free, within Pennsylvania, 1-800-732-0999. Registration does not imply endorsement.

Photo Credit: Pittsburgh CLO's Production of *GUYS AND DOLLS* 2002

2 Museums for
the Price of 1—
Endless Fun!



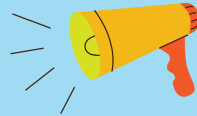
Keith Haring, *Lichtziel* (1981) © Keith Haring Foundation; General Idea, *AIDS (Wallpaper)* © General Idea



Carnegie Museums
of Art and
Natural History

● carnegieart.org
● carnegiemnh.org

find your
VOICE



Summer Reading 2023
June 11 - August 6

If you enjoyed tonight's **SHOW**

You and your family will enjoy reading these titles this summer!



Adult: *Saint Mazie, Jami Attenberg*
Teen: *Reggie and Delilah's Year of Falling, Elise Bryant*
Children: *Hero vs. Villain: A Book of Opposites, T. Nat Fuller*

Register today: carnegielibrary.org/summer

 works here.

KDKA

KDKA-TV NEWS AT 5
EXPECT MORE

Pittsburgh
CLO
KARA CABARET SERIES
HONORING MICHAEL & DOLORES KARA

tick,
tick...
BOOM!

A MUSICAL BY JONATHAN LARSON, THE
CREATOR OF RENT

SEPTEMBER 22-OCTOBER 22

Cor Alma

**EAT
DRINK
JAZZ**

DOWNTOWN
613 PENN AVENUE

WWW.CONALMAPGH.COM
TINA

PRESENT THIS AD ON YOUR NEXT VISIT AND RECEIVE 10% OFF FOOD.
No cash value, can not me used toward tax or gratuity. One coupon per guest. Expires August 31, 2023.



The Director and Choreographer are members of the Stage Directors and Choreographers Society, a national theatrical labor union.



United Scenic Artists represents the designers and scenic painters for the American Theatre.



Backstage and Front of the House Employees are represented by the International Alliance of Theatrical Stage Employees (or I.A.T.S.E.).



The actors and stage managers employed in this production are members of Actors' Equity Association, the union of professional actors and stage managers in the United States.



The Musicians, Conductors, Music Preparation Personnel and Librarians employed in this production are members of the American Federation of Musicians of the United States and Canada.

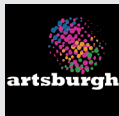
Pittsburgh CLO receives state arts funding support through a grant from the Pennsylvania Council on the Arts, a state agency funded by the Commonwealth of Pennsylvania and the National Endowment for the Arts, a federal agency.



The Allegheny Regional Asset District, a county agency created to support and finance regional assets, including libraries, parks, cultural groups, sports and civic facilities, and to distribute tax relief to the 128 municipalities of Allegheny County.



The National Endowment for the Arts is a public agency dedicated to supporting excellence in the arts, both new and established; bringing the arts to all Americans; and providing leadership in arts education. Established by Congress in 1965 as an independent agency of the federal government, the Endowment is the nation's largest annual funder of the arts, bringing great art to all 50 states, including rural areas, inner cities, and military bases.



Pittsburgh
CLO

AMBASSADORS

SUPPORT • ENGAGE • NETWORK • VOLUNTEER



BECOME A PITTSBURGH CLO AMBASSADOR TODAY!

The mission of the Pittsburgh CLO Ambassadors is to support and broaden the reach and diversity of the Pittsburgh CLO and to make musical theatre an active and accessible part of the lives of its members and others through the organization of and participation in a combination of theatrical, social, fundraising, volunteer, and educational events.



pittsburghCLO.org/Ambassadors

GOT A GROUP? GET A DEAL!

GROUPS OF 10+

Gather your friends, family or co-workers and discover the benefits and experience the theater together! It's easy to organize your group. We'll give you all the tools that you need to give your group the special treatment it deserves.

**ORDER ONLINE,
Call 412-325-1582
OR GROUPS@PITTSBURGHCLLO.ORG**



QUIET ROOM

LOCATED ON THE SECOND LEVEL OF THE BENEDUM CENTER

Pittsburgh CLO is thrilled to be partnering with Carnegie Library of Pittsburgh to provide a Quiet Room during all performances in the 2023 Summer Series. This room is intended to provide guests of all ages with an optional quiet space while still having the ability to engage in and enjoy live musical theatre together with family and friends. Enjoy a selection of fidget toys, puzzles, books, noise canceling headphones, coloring books & more, all provided by Carnegie Library of Pittsburgh. The room is located on the second level of the Benedum Center. Please see an usher or volunteer for guidance or to learn more.





PITTSBURGH CLO STAFF

Mark Fleischer, *Executive Producer*

SALES & MARKETING

Sharon Goldstein...*Director of Sales and Marketing*
 Nicole Castelli.....*Patron Services and Ticketing Associate*
 Ryan Clark.....*Manager of Patron Services and Ticketing*
 Emma Cumberledge.....*Patron Services and Ticketing Associate*
 Sidney Franczak.....*Marketing Manager*
 Kyle J. Malinosky.....*Marketing Coordinator*
 Jacob Punturi.....*Assistany Manager of Patron Services*
 Charlene Flores Shields.....*Group Sales Coordinator*

DEVELOPMENT

Wynne Fedele.....*Director of Development*
 Shirley Gaudette.....*Manager of Individual Giving*
 Lydia Grimenstein.....*Development Coordinator*
 Levi Von Iderstein.....*Development Data Coordinator*
 Brandon Marzke.....*Development Coordinator*
 Dayna Sowers.....*Board Liaison*

FINANCE & ADMINISTRATION

Angela Langill.....*Director of Finance and Administration*
 Michael J. Cerchiaro.....*General Manager*
 Nancy Chang.....*Accountant*
 Shelby Hinkle.....*Human Resources Manager*
 Kuei-O Lin.....*Accountant*
 Keturah Wasler.....*Office Manager*

EDUCATION

Jim Scriven.....*Director of Education*
 Patty Maloney.....*Principal*
 Jacqueline Mishol.....*Receptionist*
 Aidan Quartana.....*Education Associate*
 Alexander Righetti.....*Education Operations Coordinator*

PRODUCTION/CONSTRUCTION CENTER

John R. Edkins.....*Director of Production/ Technical Supervisor*
 Benjamin Zimmer...*Associate Director of Production*
 Billy Mason.....*Associate Producer*
 Macarena Subiagre.....*Production Manager*
 Michele Sullivan.....*Construction Center Business Manager*
 Matthew Abate.....*Welder*
 Michael Bannias.....*Key Carpenter*
 Megan Bresser.....*Charge Scenic*
 Fredrich Drenkow.....*Journeyman*
 Connor Edkins.....*Journeyman*
 Jordan Edkins.....*Foreman/CNC Operator*
 Kevin Hogan.....*Electrician*
 Daniel Kendgia.....*Electrician*
 Andrew Kutrufis.....*Head Carpenter*
 BJ Lipari.....*Charge Scenic Artist*
 Timothy McCoy.....*Key Carpenter*
 Jessie Notarius.....*Scenic*
 Evan Shoaf.....*Key Carpenter*
 Brendan Smith.....*Key Carpenter*

GUYS & DOLLS PRODUCTION

Greg Brooks.....*Sound Associate*
 Catie Brown.....*Rehearsal Pianist*
 Chris Campbell.....*Artistic Fellow*
 Costume World Theatricals.....*Costumes Provider*
 Kolton Cotton.....*Video Assistant*
 Tome' Cousin.....*Intimacy Coordinator*
 James Cunningham.....*Music Director*
 Bryce Cutler.....*Projection Designer*
 Mark Esposito.....*Choreographer*
 Chris Evans.....*Sound Designer*
 Joseph Fedore.....*Infection Disease Officer*
 Rachel Geary.....*Wig and Makeup Supervisor*
 Noah Glaister...*Lobby Events Production Coordinator*
 Lisa Ann Goldsmith.....*Dialect Coach*
 Anna Hanson.....*Producing Assistant*
 Jim Harp.....*Keyboard Programmer*
 Kelly Haywood.....*Assistant Stage Manager**
 George Hoydich.....*Music Coordinator*
 Jeff Knaggs.....*Hair and Makeup Designer*
 Darren Lee.....*Director*
 Colby Miller.....*Assistant Props Designer*
 Paul Miller.....*Lighting Designer*
 Robert Neumeyer.....*Associate Music Director Arranger, and Orchestrator*
 Ben Pimental...*Infection Disease Control Supervisor*
 Renée Rimland.....*Production Stage Manager**
 Rene Pistella.....*Consulting Costume Designer*
 Marty Savolskis.....*Props Coordinator*
 Christine Schott.....*Assistant Stage Manager**
 Angie Staats.....*Company Manager*
 Kathie Sullivan.....*Costume Coordinator*
 Carly Thompson.....*Stage Management Production Assistant*
 Gabriella Walko.....*Stage Management Production Assistant*
 Jacob Zedek.....*Associate Lighting Designer*

SUMMER INTERNS

Connor Behary.....*Music Direction*
 Austin Brannan.....*Producing*
 Genevieve Chiappetta.....*Costume Coordination*
 Claire Dursa.....*Development*
 Bailey DeBerry.....*Company Management*
 Pan-Pan Gou.....*Sound Design*
 Emma Heiser.....*Production Management*
 Abigail Kelley.....*Education*
 Gwen Lillycrop.....*Education*
 Jacob Malizio.....*Marketing and Public Relations*
 Harry Mullin.....*Construction Center Production Assistant*
 Avery Ochs.....*Marketing and Public Relations*
 Etta Partridge.....*Community Engagement*
 Shelby Thach.....*Lighting*
 Corisa Saitta.....*Education*
 Makenzie Shimko.....*Theater Management*
 Marissa Waitlevertch.....*Education*

*Members of Actors' Equity Association, the union of professional actors and stage managers in the United States.



BENEDUM CENTER DIRECTORY

CHECK ROOMS

Coin-operated lockers are located on the Mezzanine Level.

EMERGENCY CALLS

Refer emergency calls to the Benedum Center Security desk at 412-456-2610. Please turn off all cell phones, pagers, PDAs, and other digital devices during the performance and notify your contacts of the emergency number.

ELEVATOR

Located off the Grand Lobby serving all levels of the Center.

FIRE EXITS

Located at all levels and clearly marked. Use ONLY in case of emergency.

LOST AND FOUND

Call Benedum Center Lost and Found Line at 412-456-2610.

REFRESHMENTS

Bars are located on the Gallery Level, Grand Lobby and in the Clark Extension on the Promenade Level. Drinks may be purchased prior to performances and during intermission.

RESTROOMS

Lounges are located on the Gallery, Promenade and Mezzanine Levels. Restrooms for Ladies and Gentlemen are located on the Gallery, Promenade and Mezzanine Levels as well as in the Clark Extension on the Promenade. Restrooms for persons with disabilities are located on both the Grand Lobby and Promenade Levels. A family restroom with an adult changing table is located on the Promenade Level.

SMOKING

Smoking is not permitted in the theater.

STAGE AREA

Limited to performers, staff and authorized visitors.

VOLUNTEERING

If you are interested in our Volunteer Program or any of the volunteering opportunities within the Pittsburgh Cultural Trust, contact Vinay at 412-456-1428.

ACCOMMODATIONS FOR PERSONS WITH DISABILITIES

- Wheelchairs are available in the main floor lobby for transition from entrance to seat location. Notice should be given at time of ticket purchase if wheelchair or disabled patron location is required.
- Rest rooms with accessible features are located in the Grand Lobby. Rest room with adult changing table is located on Promenade Level in the Clark Extension.
- Guide dogs gladly accommodated. Please inquire at the Box Office when buying tickets.
- Elevator in Grand Lobby serves all levels of the Center.
- Infrared hearing devices are available in the Guest Service Center.

THE BOX OFFICE AT THEATER SQUARE

Purchase tickets to all Cultural District performances, regardless of venue or presenting organization at the Box Office at the Benedum Center. Monday through Saturday, 10am to 6pm; Sunday noon to 4pm. For more information, visit www.trustarts.org. The Benedum Center Box Office will be open also on performance days, two hours before curtain time through intermission.

INFORMATION AND CALL CENTER NUMBER

MasterCard, Visa, Discover and American Express are accepted. Call Center operates Monday through Saturday 10am to 8pm and Sunday noon to 8pm. Orders received one week in advance will be held for pick-up at the Box Office. The Benedum Center Box Office assesses a \$2.00 per ticket charge for reissuing lost or forgotten tickets. Call 412-456-6666.

BENEDUM STAFF

Vice President Operations..... Gene Ciavarra
 Director of Operations..... Joanna Obuzor
 Theater Operations Manager Katelyn Colwell
 Theatrical Renovation Project Manager Andrew Ostrowski
 Director of Volunteer Services and
 Front of House Guest Experience..... Ashley Rieser
 Manager of Volunteer Services and
 Front of House Guest Experience..... Vinay Thomas
 Director of Production..... Berne Bloom
 Production Manager..... Diane Hines
 Stage Technicians..... Christopher Evans, Adolf Hundertmark
 Brett Lindblom
 Chief Engineer Dennis Curry
 Engineers..... Dustin Curry, Rick Jordan, Brett Melisko
 Box Office..... Brenna Painter, Karoline Smith, Timothy Smith

CHILDREN'S POLICY

Regardless of age, all patrons must have a ticket. Children under the age of 3 years will not be admitted to the Benedum Center, Byham Theater or Greer Cabaret. All children must be seated with an adult. Any person disrupting a performance or inhibiting the enjoyment of an event for patrons may be removed from the theater without refund.

BAG POLICY

In order to ensure the safety and security of all patrons and guests attending events, only bags smaller than 16" x 16" x 8" will be allowed to be brought in to Pittsburgh Cultural Trust theaters. This includes all large pocket books/purses, tote bags, duffel bags, suitcases, knapsacks, back-packs, packages, cartons, paper sacks, briefcases, portfolio cases, binocular cases, camera equipment cases, and any other type of extraneous device(s) which could be used for carrying or concealing items.

Patrons and guests with prohibited items will be allowed to return such items to their vehicle but will not be able to leave such items outside the facility doors; any such items left outside will be immediately discarded by the facility staff.

MAKE THE MOST OF THIS PERFORMANCE

When you attend Pittsburgh CLO performances, please be sure to have sufficient time for travel, parking and construction delays. Latecomers and anyone leaving the theater during the performance will be held in the lobby until a suitable break in the program. Parents, please be considerate of the performers, as well as your fellow audience members. Kindly remove restless children from the theater. Your attentiveness to these concerns is greatly appreciated and will enhance everyone's enjoyment of Pittsburgh CLO performances. Please turn off all cell phones and electronic devices during the show.



ORR'S rocks.

5857 Forbes Avenue
Pittsburgh PA 15217
412-421-6777

532 Beaver Street
Sewickley PA 15143
412-741-8080

orrsrocks.com

only
NATURAL
DIAMONDS