



Pittsburgh
CLO

75TH
ANNIVERSARY



BROADWAY MUSICAL *Celebration*

FEATURING MUSICALS
FROM THE LAST

75

YEARS
OF PITTSBURGH CLO

Presenting Sponsor:



**Celebrating the
arts and the joy
they bring to life
every day.**



We're proud to support the CLO in bringing the arts to life in Pittsburgh.

pnc.com



Pittsburgh CLO Board of Directors



OFFICERS



Helen Hanna Casey
Chairwoman of the Board



Alexander Overstrom
President

Honorary Chairman of the Board
Julie Andrews

Chairman of the Board
Helen Hanna Casey

President
Alexander Overstrom

Vice President/CLO Ambassadors
Lisa D. Perrache

Vice Presidents/Audit
Timothy K. Zimmerman
Todd C. Moules

Vice Presidents/Budget & Finance
Timothy K. Zimmerman
Dana A. Yealy

Vice Presidents/Cabaret Theater
John Dick
Meghan Barrera
Leah Ohodnicki

Vice President/
Construction Center & Facilities
Yarone Zober

Vice Presidents/Development
Mark J. Minnaugh
Joseph V. DiVito, Jr.
Ronald L. Violi
Laurie M. Mushinsky

Vice Presidents/Education
Christine M. Kobus
George Gans

Vice President/CLO Guild
Laura Penrod Kronk

Vice Presidents/Human Resources
Todd C. Moules
Leslie S. Hyde

Vice Presidents/
Long Range Planning
Michael E. Bleier
James J. McQuade

Vice Presidents/Marketing &
Community Engagement
Michael F. Walsh
Jon Galatis

Vice Presidents/Production,
New Works Development & Funding
Peter J. Germain
Dennis Unkovic
Stephen S. Bloomberg

Vice Presidents/Nominating
Scott F. Neill
Glenn D. Todd

Vice Presidents
Pritam Advani
Daniel I. Booker
Sherri Grasak
Richard S. Hamilton
Cate Linn

Secretary
Johanna G. O'Loughlin

Treasurer
Edward T. Karlovich

Executive Director Emeritus
Charles Gray

Corporate Counsel
James M. Doerfler

Chairmen of the Board Emeritus
William M. Lambert
George A. Davidson, Jr.
Joseph C. Guyaux
James E. Rohr
Daniel I. Booker
Louis D. Astorino

CEO
Van Kaplan

Executive Producer
Mark Fleischer

DIRECTORS

Pritam Advani
Meghan N. Barrera
Joyce A. Bender
Michael E. Bleier
Patricia M. Blenko
Stephen S. Bloomberg
Daniel I. Booker
Helen Hanna Casey
Laurel Dagnon
Joyce C. Dailey
George A. Davidson, Jr.
John Dick
Joseph V. DiVito, Jr.
Jane Dixon
Clare Donahue

Gus Engel
Leslie Evancho
Shelley Fant
Frank Fisher
Jon Galatis
George S. Gans
Peter J. Germain
Sherri Grasak
Joseph C. Guyaux
Richard S. Hamilton
Vicki C. Henn
Paul Hennigan
Leon Hoffman
Leslie S. Hyde
Edward T. Karlovich

Christine M. Kobus
Laura Penrod Kronk
William M. Lambert
Diane B. Landers
John A. Lemmex
Cate Linn
Nicholas J. Liparulo
Richard J. Lipovich
Robert C. McCartney
Margaret McLean
James J. McQuade
Timothy M. McVay
Mark J. Minnaugh
Laurie M. Mushinsky
Scott F. Neill

Council Member
Corey O'Connor
Johanna G. O'Loughlin
Christina P. O'Toole
Leah E. Ohodnicki
Alexander Overstrom
Lisa D. Perrache
Robin S. Randall
Eric A. Schaffer
Salvatore M. Sirabella
Luke A. Sizemore
Arlene Sokolow
Helen Spalaris
LaShawnda Thomas
Joann L. Tissue

The Honorable
Debra Todd
Glenn D. Todd
Dennis Unkovic
Michael K. Vennum
Ronald L. Violi
Carla J. Vrsansky
Michael F. Walsh
Melvin Washington
The Honorable
Jake Wheatley, Jr.
Dana A. Yealy
Timothy K. Zimmerman
Yarone Zober

ADVISORY BOARD

George Ator
Joan Bogut
Charles R. Fallon

Scotti Mulert
Rosemarie R. Parse, Ph.D.

Melvin D. Rex
George W. Rooney, Jr.



Welcome! PNC is proud to serve as the presenting sponsor of Pittsburgh CLO's Summer Under the Stars.

Each year the CLO delights and entertains audiences from across our region and beyond in the heart of Pittsburgh's cultural district. This year, while the location is different, the tradition continues with an all-new production of a timeless classic and a stunning tribute to CLO's 75th Anniversary.

After an unprecedented year, when the performing arts were put on hold across the world, this once-in-a-lifetime opportunity to experience musical theater under the stars at Heinz Field means more than ever. We are proud that our longstanding relationship with Pittsburgh CLO helps enhance the region's performing arts and helps sustain CLO's Academy of Musical Theater for children.

Thank you for being here and supporting one of the region's rich cultural assets. Enjoy the show!

Sincerely,

A handwritten signature in blue ink, appearing to read "L. Cestello".

Louis R. Cestello
Regional President of Pittsburgh and Southwestern Pennsylvania,
PNC Bank

System One
Proudly Supports
Pittsburgh CLO
in Its Celebration
of Musical Theater



Discover a leader in responsible investing

Federated Hermes, Inc. (NYSE:FHI) is a global leader in active, responsible investing. With more than \$600 billion in assets under management, we are meeting the changing needs of today's investors.

Guided by our conviction that responsible investing is the best way to create wealth over the long term, Federated Hermes offers investors around the world a broad range of capabilities.

Learn more about these capabilities and our approach to responsible investing at [FederatedHermes.com](https://www.federatedhermes.com).



© 2021 Federated Hermes, Inc. Q455461 (6/21)

Happy 75th to the CLO!

We Celebrate the Past,
the Present,
and the Future!



Real Estate Services

www.howardhanna.com



July 21 - 23, 2021
PITTSBURGH CLO
VAN KAPLAN, CEO
MARK FLEISCHER, Executive Producer
Presents

BROADWAY MUSICAL *Celebration*

Starring

CLAY AIKEN NORM LEWIS ROBBIE FAIRCHILD
JACKIE BURNS PATRICK CASSIDY ALI EWOLDT JOSHUA GROSSO
MANU NARAYAN GENNY LIS PADILLA JOE SERAFINI
STEPHANIE UMOH MAX VON ESSEN ALLISON WALSH

Original Music & Show Concept by
JASON COLL

Written by
MARY JANE BRENNAN

Lighting & Production Design by
ANDREW GIFFIN

Video Design by
JOE SPINOGATTI

Sound Design by
CHRISTOPHER EVANS

Hair Design by
NICOLE PAGANO

Makeup Design by
TRAVIS KLINGLER

Orchestrator
ROBERT NEUMEYER

Production Manager
MARK SUSANY

Casting by
JZ CASTING
GEOFF JOSSELSO, CSA
KATJA ZAROLINSKI, CSA

Music Director
JAMES CUNNINGHAM

Directed & Choreographed by
BAAYORK LEE

The videotaping or other video or audio recording
of this production is strictly prohibited.

Pittsburgh CLO is a founding member of the National Alliance for Musical Theatre, Independent Presenters Network and The Broadway League.



Never underestimate
the power of a great performance!

We are proud to support the **Pittsburgh CLO** and its **75th anniversary**.

UPMC
LIFE CHANGING MEDICINE

UPMC HEALTH PLAN

Cast



Clay Aiken*
Norm Lewis*
Robbie Fairchild*
Jackie Burns*
Patrick Cassidy*
Ali Ewoldt*
Joshua Grosso*
Manu Narayan*
Genny Lis Padilla*
Joe Serafini
Stephanie Umoh*
Max von Essen*
Allison Walsh*

ENSEMBLE:

Sophie Aknin*, Jamarly Gil*, Akina Kitazawa*, Connor McRory*,
Jerreme Rodriguez*, Davis Wayne*

TEEN ENSEMBLE:

Skyler Agostoni*, Gabriella Cappelloni*, Madeline Dalesio*, Jack Engel*,
Benjamin Godley-Fisher*, Liz (Elizabeth) Kamin*, Lucia Lazzara-Goodrich*,
Ellen Milcoff*, Chloe Miller*, Felicia Niebel*, Maile Oravitz*, Aiyana Pierce*,
Kai Sachon*, Madeline Sclichter*, Alexis Shepherd*, Lauren Ivory Vail*

ORCHESTRA SINGERS:

Seth Laidlaw, Whitney Noelle, Grace Plassmeyer*, Halle Surgil, Caedon Vogel

**Members of the Actors' Equity Association, the union of professional actors and stage managers in the United States*

**Students of the Pittsburgh CLO Academy of Musical Theater*

Pittsburgh CLO Orchestra

Musical Coordinator

Frank Ostrowski

Concert Master

Mary Beth Schotting

Violin 2

Maureen Conlon

Viola

Jennifer Gerhard

Cello

Joseph Bishkoff

Bass

Jeffrey Mangone

Reed 1

George Hoydich

Reed 2

Cynthia Anderson

Reed 3

Samuel Eisenreich

Reed 4

Brady Amerson

Trumpet 1

Stephen Hawk

Trumpet 2

David Wingenbach

Trombone 1

Robert Matchett

Trombone 2

Glenn Wayland

Keyboard 1

Catie Brown

Keyboard 2

James Burns

Keyboard 3

Camille Rolla

Guitar

Ken Karsh

Drums

R. J. Heid

Percussion

Paul Evans



We are proud to support the **Pittsburgh CLO's** **“Summer Under the Stars”** and to celebrate the return of live musical theater in Pittsburgh.

reedsmith.com

ReedSmith
Driving progress
through partnership



CELEBRATING MUSICAL THEATER

For 75 years, Pittsburgh CLO has been an integral part of the cultural fabric of Pittsburgh and the driving force behind live musical theater in Southwestern Pennsylvania. Pittsburgh CLO is a not-for-profit arts organization that entertains nearly 200,000 patrons each year through the Summer Season at the Benedum Center, *A MUSICAL CHRISTMAS CAROL* at the Byham and year-round at the CLO Cabaret. Pittsburgh CLO's commitment to the future of the musical theater art form includes the Pittsburgh CLO Academy of Musical Theater, the Gallery of Heroes in-school musical series, the Gene Kelly Awards for Excellence in High School Musical Theater, the National High School Musical Theatre Awards, the Construction Center for the Arts and the SPARK festival for new small-cast musicals.

pittsburghCLO.org



Pittsburgh CLO, *IN THE HEIGHTS* | Photo: Archie Carpenter

Follow Us   



Musical Numbers

1. **"Gypsy Overture"** by Jule Styne.....Orchestra
2. **"Under the Stars,"** words and music by Jason Coll Clay Aiken, Ensemble, Teen Ensemble
3. **"The Drinking Song"** from *The Student Prince* -
music by Sigmund Romberg and lyrics by Dorothy Donnelly.....Max von Essen, Male Ensemble
4. **"In the Heights"** from *In the Heights* -
music and lyrics by Lin-Manuel Miranda..... Joshua Grosso, Ensemble
5. **"Being Alive"** from *Company* - music and lyrics by Stephen Sondheim..... Norm Lewis
6. **Richard Rodgers Award Medley**
 - a. **"Oh, What a Beautiful Mornin'"** from *Oklahoma!* -
music by Richard Rodgers and lyrics by Oscar Hammerstein II Max von Essen, Ali Ewoldt
 - b. **"I'm Gonna Wash That Man"** from *South Pacific* - music by Richard Rodgers
and lyrics by Oscar Hammerstein IIJackie Burns, Female Ensemble
 - c. **"Roxie"** from *Chicago* -
music by John Kander and lyrics by Fred Ebb..... Genny Lis Padilla, Male Ensemble
 - d. **"Putting It Together"** from *Sunday in the Park with George* -
music and lyrics by Stephen Sondheim Manu Narayan
 - e. **"A Heart Full of Love"** from *Les Misérables* - music by
Claude-Michel Schönberg and Alain Boubil and Jean-Marc Natel.
English lyrics by Herbert Kretzmer..... Joshua Grosso, Ali Ewoldt
 - f. **"I Don't Know How to Love Him"** from *Jesus Christ Superstar* -
music by Andrew Lloyd Webber and lyrics by Tim Rice..... Stephanie Umoh
 - g. **"Think of Me"** from *The Phantom of the Opera* -
music by Andrew Lloyd Webber and lyrics by Charles HartAli Ewoldt
7. **"Defying Gravity"** from *Wicked* - music and lyrics by Stephen SchwartzJackie Burns
8. **"Copacabana"** from *Barry Manilow's Copacabana* - music by Barry Manilow
and lyrics by Bruce Sussman and Jack Feldman..... Clay Aiken, Ensemble
9. **The Music Man** - music and lyrics by Meredith Willson
 - a. **"Trouble"**Patrick Cassidy, Ensemble
 - b. **"Til There Was You"**..... Patrick Cassidy, Ali Ewoldt
10. **"What Kind of Fool Am I"** from *Stop The World - I Want To Get Off* -
music and lyrics by Leslie Bricusse and Anthony Newley.....Clay Aiken
11. **Mamma Mia! Megamix** - music and lyrics by Benny Andersson and Björn Ulvaeus
 - a. **"Mamma Mia"** Stephanie Umoh, Jackie Burns, Genny Lis Padilla, Ensemble, Teen Ensemble
 - b. **"Dancing Queen"** Stephanie Umoh, Jackie Burns, Genny Lis Padilla, Ensemble, Teen Ensemble
 - c. **"Waterloo"** Stephanie Umoh, Jackie Burns, Genny Lis Padilla, Ensemble, Teen Ensemble
12. **"We're All In This Together"** from Disney's *High School Musical* -
music and lyrics by Matthew Gerrard; Robbie Nevil.....Joe Serafini, Ensemble, Teen Ensemble
13. **"Stairway to Paradise"** from *George White's Scandals*Max von Essen
14. **An American in Paris Medley** - music by George Gershwin and lyrics by Ira Gershwin
 - a. **"An American in Paris - Pas de Deux"**..... Robbie Fairchild, Allison Walsh
 - b. **"S Wonderful"**..... Max von Essen, Manu Narayan, Robbie Fairchild
 - c. **"I Got Rhythm"**..... Max von Essen, Manu Narayan, Robbie Fairchild, Allison Walsh
15. **On Your Feet! Medley** - music and lyrics by
Gloria and Emilio Estefan Genny Lis Padilla, Ensemble, Teen Ensemble
16. **"Seasons of Love"** from *Rent* - music and lyrics by Jonathan Larson All Principals
17. **"The Impossible Dream"** from *Man of La Mancha* -
music by Mitch Leigh and lyrics by Joe Darion..... Norm Lewis
18. **"One"** from *A Chorus Line* - music by Marvin Hamlisch and lyrics by Edward Kleban..... Full Company

A BROADWAY MUSICAL CELEBRATION IS PERFORMED WITHOUT AN INTERMISSION.



*We toast the ambassadors,
guild, board and staff
on bringing people together
to experience the joy
of musical theater!*

Helen & Steve Casey



Who's Who

CLAY AIKEN most recently starred on Broadway, alongside Ruben Studdard, in *Ruben & Clay's First Annual Christmas Carol Family Fun Pageant Spectacular Reunion Show* at the Imperial Theater. *The New York Times* called the production 'A Christmas Miracle'. This came ten years after Clay's critically lauded Broadway debut in *Monty Python's Spamalot*. On the heels of *Idol*, he became the first artist in history to have his first single debut at #1 on Billboard's Hot 100 chart. His subsequent album, *Measure Of A Man*, also debuted at #1 with the highest first week sales by a debut artist. His 2004 holiday release, *Merry Christmas With Love*, set a record for the fastest selling holiday album of the SoundScan era and remains tied for the highest charting debut of a holiday album in Billboard history. He served 9 years as a UNICEF Ambassador and in 2003, he co-founded, with Diane Bubel, what is now the National Inclusion Project to advocate and increase opportunities for children with disabilities to be included in extracurricular activities (such as summer camps and after-school programs) with their non-disabled peers. Additional TV appearances include: *30 Rock*, *The Office*, *Scrubs*, *Days Of Our Lives*, and *Law & Order: SVU*. Additional 2nd place finishes include: *The Celebrity Apprentice* in 2012 and the NC 2nd District US House race in 2014.

NORM LEWIS can currently be seen starring in the SAG, Critics Choice, and NAACP Image Award-nominated Netflix film *Da 5 Bloods* by Spike Lee and in the groundbreaking FX series, *Pose*. He was previously seen in the NBC television special, *Jesus Christ Superstar Live in Concert!*, alongside John Legend, Sara Bareilles, and Alice Cooper. He recently appeared in the Broadway revival of *Once on This Island* and as Sweeney Todd in the Off-Broadway production of *Sweeney Todd: The Demon Barber of Fleet Street* at the Barrow Street Theatre, receiving the AUDELCO Award for his performance. In May of 2014, he made history as *The Phantom of the Opera's* first African American Phantom on Broadway. He has been seen on PBS in the Live From Lincoln Center productions of *Showboat* with Vanessa Williams, *Norm Lewis: Who Am I?*, and *New Year's Eve: A Gershwin Celebration* with Diane Reeves, as well as *American Voices* with Renée Fleming

and the PBS Special *First You Dream - The Music of Kander & Ebb*. He can be seen recurring in the VH1 series, *Daytime Divas*, also alongside Vanessa Williams. His additional television credits include *Mrs. America*, *Better Things*, *The Unbreakable Kimmy Schmidt*, *Bull*, *Chicago Med*, *Gotham*, *The Blacklist*, and *Blue Bloods*, as well as in his recurring role as Senator Edison Davis on the hit drama *Scandal*. Mr. Lewis is a proud founding member of Black Theatre United, an organization which stands together to help protect Black people, Black talent and Black lives of all shapes and orientations in theatre and communities across the country. He received Tony, Drama Desk, Drama League, and Outer Critics Circle award nominations for his performance as Porgy in the Broadway production of The Gershwins' *Porgy & Bess*. Other Broadway credits include *Sondheim on Sondheim*, *Disney's The Little Mermaid*, *Les Misérables*, *Chicago*, *Amour*, *The Wild Party*, *Side Show*, *Miss Saigon*, and *The Who's Tommy*. In London's West End he has appeared as Javert in *Les Misérables* and *Les Misérables: The 25th Anniversary Concert*, which aired on PBS. Off-Broadway Mr. Lewis has performed in *Dessa Rose* (Drama Desk nomination, AUDELCO Award), Shakespeare in the Park's *The Tempest*, *The Two Gentlemen of Verona* (Drama League nomination), *Captains Courageous*, and *A New Brain*. His regional credits include Porgy in The Gershwins' *Porgy and Bess* (A.R.T.), *Ragtime*, *Dreamgirls* (with Jennifer Holliday), *First You Dream*, *Sweeney Todd*, and *The Fantasticks*. His additional film credits include *Magnum Opus*, *Winter's Tale*, *Sex and the City 2*, *Confidences*, and *Preaching to the Choir*.

ROBBIE FAIRCHILD made his Tony®-nominated Broadway debut in 2015 as Jerry Mulligan in the Tony Award®-winning musical *An American in Paris*, which he reprised in London's West End in 2017. He was awarded the Drama Desk, Outer Critics Circle, Theater World, National Dance, and Astaire Award for this performance and was nominated for the Evening Standard and Drama League Awards. From 2009 to 2017, Fairchild performed as a Principal Dancer with the New York City Ballet. His other theater credits include *Monster* in *Mary Shelly's Frankenstein* (Signature



Performing is
what you do.
Joy is what you bring.

We're proud to support
the Pittsburgh CLO.

DollarBank[®]
Let's get you there.

Dollar.Bank

 Equal Housing Lender. Member FDIC. Copyright © 2021, Dollar Bank, Federal Savings Bank.

BRD247_21



Who's Who

Theater, Chita Rivera Award), Harry Beaton in *Brigadoon* (New York City Center), Will Parker in *Oklahoma!* (Royal Albert Hall, London), Mike Costa in *A Chorus Line* (Hollywood Bowl), and Bill Calhoun in *Kiss Me Kate* (Roundabout Theater Company's 2017 Gala). Television: *Soundtrack* (Netflix), *Mixtape* (FOX Pilot), *Julie's Greenroom* (Netflix), *Oklahoma!* (BBC Proms), Romeo in *Romeo and Juliet* and *Carousel Boy* in NY Philharmonic's *Carousel* (PBS's Live from Lincoln Center), *Dancing With The Stars*, *The Late Show With Stephen Colbert*, *Live with Kelly and Michael*, *CBS Sunday Morning*, and *60 Minutes*. Film: Tom Hooper's *Cats*, *An American in Paris Live* (West End Production), *The Chaperone* and *NY Export: Opus Jazz*.

JACKIE BURNS is a bi-coastal actress who holds the title of Broadway's longest running Elphaba in *WICKED* and she is the face of the brand. She has also played Elphaba on the National Tour, where her performance received an Irene Award nomination. She replaced Tony Award® winning Idina Menzel in the national tour of *If/Then* where she received rave reviews for her performance and was also a part of the original Broadway company. Her other Broadway and off-Broadway credits include the Tony Award®-winning revival of *Hair* (original Broadway company member) and *Rock of Ages* (original Off-Broadway company member) Jackie can be heard on the cast recordings for *Hair*, *Island Song*, *A Killer Party* and has done over 50 demos for upcoming musicals. Film/TV credits include, *Set it Up*, *The Magnificent Meyersons*, and *Ghost*. Jackie has sung all over the world with Grammy and Tony Award®-winning composer Frank Wildhorn (*Jekyll and Hyde*) as his featured female singer. She also works with John Such Artists' Management as one of his featured singers in concert venues all across the country.

PATRICK CASSIDY is the son of Oscar winner Shirley Jones and Tony winner Jack Cassidy. Patrick began his long association with the Pittsburgh CLO as Lancelot in a 1998 production of *Camelot*. He also played the title role in a yearlong, CLO-produced national tour of *Joseph and the Amazing Technicolor Dreamcoat* in 1999-2000 and was last seen here as Rev. Moore in Pittsburgh CLO's 2014 production of

Footloose. Patrick's Broadway career includes starring roles in *The Pirates of Penzance*, *Leader of the Pack*, *Annie Get Your Gun* and Elton John's *Aida*. When he and his mom joined the revival of *42nd Street*, they became the first mother and son to ever star together in a Broadway show. Off-Broadway, he originated the role of the Balladeer in Stephen Sondheim's *Assassins*. On TV, Patrick starred with Alec Baldwin in the miniseries *Dress Gray*, filled Patrick Swayze's dancing shoes in *Dirty Dancing* and guested on *ER*, *Smallville*, *CSI: Miami*, *K.C. Undercover* and *Law & Order: SVU*. The ABC Family series *Ruby & the Rockits* gave Patrick a chance to work with his brothers: David was his co-star, Shaun was the writer/creator and Ryan was set decorator. On the big screen, his most cherished project is *Longtime Companion*, the groundbreaking drama that was the first to depict the emotional toll of the AIDS crisis. His directing resume includes *The Music Man* at the Kennedy Center in Washington, D.C., and *Oklahoma!* at the Pittsburgh Playhouse. At Las Vegas' Wynn Hotel, he was resident director of *Showstoppers* and acting coach for *Le Réve*. Patrick and his wife of 27 years, choreographer/dance teacher Melissa Hurley, live in Franklin, Tenn., where he is the artistic director of the award-winning regional theatre company Studio Tenn.

ALI EWOLDT is thrilled to return to Pittsburgh CLO where she played Maria in *West Side Story*. She has appeared as Christine Daaé in *The Phantom of the Opera* on Broadway, Cosette in *Les Misérables* (Broadway, National Tour), *The King and I* (Broadway, Lyric Opera of Chicago), Maria in *West Side Story* (National Tour, International Tour) and Luisa in *The Fantasticks* (Off-Broadway). She has also played Philia in *A Funny Thing...* (The Munny), Fan in *A Christmas Carol* (McCarter Theatre), and Sarah Brown in *Guys and Dolls* (Sacramento Music Circus). Ali's concert/symphony work includes: Alice Tully Hall, The Town Hall, NY Pops at Carnegie Hall, American Pops Orchestra, Houston Symphony, Kaohsiung Symphony and The Boston Pops with Maestro Keith Lockhart. Her TV/Film credits include *The Michael J. Fox Show*, *Yield*, *Mia*, and *The Cactus*. Ali has a BA in psychology from Yale University. @aliewoldt



Pittsburgh
CLO

75TH
ANNIVERSARY

75 YEARS OF HISTORY

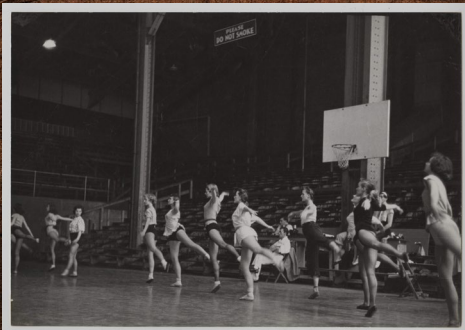
Since its founding by Edgar J. Kaufmann and A.L. Wolk in 1946, The Civic Light Opera Association of Greater Pittsburgh -- now Pittsburgh CLO -- has been a beloved part of the lives of Pittsburghers and of the musical theater industry nationwide. CLO's first 13 seasons were held at Pitt Stadium, where crowds of thousands gathered to see productions that might include both a neighbor

and a national star. Through the intervening decades, the Summer Season moved venues several times -- from the Melody Tent (1959 - 1961) to the Civic Arena (1962 - 1969) to Heinz Hall (1971 - 1987) to the Benedum (1988 and onward) to, this year, Heinz Field! -- but its driving force has remained consistent: to bring artists and audiences together to build community and celebrate musical theater.

While the Summer Season has always been the heart of Pittsburgh CLO, the organization has continued to grow. Today, the CLO season extends all year, with the beloved holiday tradition of *A Musical Christmas Carol* bringing families together at the Byham since 1992 and small-cast musicals delighting audiences year-round at the CLO Cabaret since 2004. Since 1997, CLO has produced or invested in over 30 national tours and Broadway productions, allowing the Summer Season to boast both beloved revivals of classics and the best of contemporary musical theater. In addition to premiering work across the country, CLO is also dedicated to developing new musicals at home. In 2017, with the completion of the Next Generation Capital Campaign, CLO deepened its commitment to the next generation of musical theater with the SPARK festival of new musicals and New Musical Weekend, programs which have facilitated the development of 15 new musicals -- including four World Premieres -- right here in Pittsburgh.

Pittsburgh CLO's commitment to the future of musical theater also extends to its Education program. Whether attending class at the CLO Academy, participating in a Creative Vision lesson at school, performing at The Gene Kelly Awards, or gaining hands-on experience as an intern in the CLO offices, students have the opportunity to gain skills that will serve them as artists, professionals, and community members for years to come.

Of course, no snapshot of CLO's 75-year history would be complete without mentioning the people who have allowed the organization to thrive. For each of the thrilling stories CLO has brought to life onstage, there are a dozen more in the wings and in the audience: of the intern who later joined the full-time staff, of the long-married couple who had their first date at Pitt Stadium, of the Broadway star who sang their first scales at the CLO Academy. **Today, tonight, we invite you to get to know that history by asking someone near you: "What's Your CLO Story?"**





Who's Who

JOSHUA GROSSO is grateful to return to Pittsburgh CLO to celebrate its 75th anniversary. He is a Carnegie Mellon University graduate with a BFA in Musical Theater. He was recently seen in the role of Marius in the North American tour of *Les Misérables*, as well as having had the pleasure of playing Usnavi in Pittsburgh CLO's *In the Heights*. He would like to send his love to his friends and family for their support over the past year.

MANU NARAYAN is a Delmont, PA native, best known for originating the leading role of Akaash in A.R. Rahman's *Bombay Dreams* at the Broadway Theater, which earned him a Drama League nomination. Additionally, he played Zoltan Karpathy in the original 2018 cast of Lincoln Center Theater's Tony-nominated revival *My Fair Lady*, and created the role of Robbie in the original Broadway musical *Gettin' the Band Back Together* at the Belasco Theater. In 2019, Manu portrayed Charlie Kringas Off-Broadway in the Roundabout / Fiasco Theater revival of Stephen Sondheim's *Merrily We Roll Along*, and Uncle Ernie in *The Who's Tommy* at the Kennedy Center. Film: Manu co-starred with Mike Myers in *The Love Guru* played supporting roles in *99 Homes*, *Cinderella Story: Once Upon a Song*, *The Last Airbender*, and *Quarterlife Crisis*. For the Indian market, he was the lead in the independent films *Good Night | Good Morning* and *Walkaway*. He holds dual BFA degrees from Carnegie Mellon University, where he is a current member of the College of Fine Arts' Dean's Council. He is so excited to return home to the Pittsburgh CLO where he performed as a CLO Mini-star, worked as the high school apprentice to conductor Don Jones for the summer season, and ultimately where he received his Actors' Equity card. Thank you Pittsburgh CLO and former Producing Director Charlie Gray!

GENNY LIS PADILLA is thrilled to be returning to Pittsburgh CLO! Broadway: Original Broadway Company of *On Your Feet!* (Rebecca, Gloria Estefan u/s); Off-Broadway: *RENT* (Mimi/ Maureen u/s), *Frida Liberada* (Frida), *Pedro Pan* (Mami); Tours: *In the Heights* 1st National (Nina & Carla), *On Your Feet! 1st National* (Rebecca, Gloria Estefan u/s), *RENT*, *Junie B.*

Jones. Regional: *In the Heights* (Nina), *Jane Eyre* (Blanche Ingram/Bertha Mason); *Man of La Mancha* (Aldonza) Television: *The Blacklist: Redemption*, *Madam Secretary*. Film: *The Assistant*. She is an AMDA graduate and has a Bachelor's degree in Musical Theatre from The New School University. A huge thanks to her team at BWA! @GennyLisPadilla

JOE SERAFINI is overjoyed to be returning home for this special *75th Anniversary Broadway Musical Celebration!* A Pittsburgh native, Joe practically grew up at the CLO Academy, performing in mainstage shows as Tiny Tim (*A Musical Christmas Carol*), Oliver Twist (*Oliver!*), Gavroche (*Les Misérables*), Michael Darling (*Peter Pan*) and Kurt von Trapp (*The Sound of Music*). He currently stars as Seb on the hit Disney+ original series, *High School Musical: The Musical: The Series*, created by fellow Pittsburgh CLO alum, Tim Federle. A recent graduate of the University of Michigan, Joe currently resides in Los Angeles, CA, but always enjoys coming home to the 'burgh to visit when he can. @joe_serafini_

STEPHANIE UMOH is soon to be heading back on tour as Angelica Schuyler in *Hamilton*. Broadway: *Ragtime* (Sarah); *Falsettos*; *Junk*. Off-Broadway: *Little Rock*; *Hallelujah, Baby!*; *Falling for Eve*; *Jerry's Girls*. Tour: *Into the Woods* (Witch); *Hamilton* (Angelica). Regional: *Jesus Christ Superstar* (Pittsburgh CLO); *Sister Act*; *Les Misérables*; *The Color Purple*; *Aida*; *Johnny Baseball* and many more. Film/TV: *House of Cards*; *Blue Bloods*; *NY 22*; *Big Words*. 2010 Theatre World Award winner for Outstanding Broadway Debut. Love to my family & CGF. @youknowumoh

MAX VON ESSEN is a Tony®, Drama Desk and Grammy nominated singer and actor best known for his role as Henri in the award winning production of *An American in Paris* on Broadway. Most recently, he completed a yearlong run in the Broadway production of *Anastasia* and then toured the country in Lincoln Center Theater's revival of *Falsettos*. Other Broadway credits include *Evita*, the revivals of *Les Misérables* and *Jesus Christ Superstar*, *Dance of the Vampires*, and the



Who's Who

closing company of the original *Les Misérables*. Additional New York credits include *Yours Unfaithfully*, *Death Takes a Holiday*, *The Jerry Springer Opera*, *Hello Again*, *Finian's Rainbow* and *The Fantasticks*. Tours include *Xanadu*, *West Side Story* and *Chicago*. TV & Film include *Law & Order: SVU*, *Elementary*, *Boardwalk Empire*, *The Good Wife*, *Royal Pains*, *Gossip Girl*, *Seven Lovers*, *Sex and the City 2*, and the webseries *Submissions Only*. Max's concert work has brought him all across the country and Canada, including The Kennedy Center, Birdland Jazz Club and a recent solo debut at Carnegie Hall with the New York Pops. Recordings include *An American in Paris*, *Evita*, *Death Takes a Holiday*, *Finian's Rainbow*, *Love Songs of Andrew Lloyd Webber*, and his debut solo album, *Call Me Old Fashioned: The Broadway Standard*, now available on iTunes.

ALLISON WALSH (She/her) is a multi-faceted performer whose nearly two decade career spans across musical theater, classical and contemporary dance, and TV/Film. After her first career with the Joffrey Ballet, she learned to use her voice starring as Lise Dassin in the First National Tour of *An American in Paris*, as well as the Original Broadway Cast. Foutteing 8 times a week, she next originated the role of Odette/Olga Romanov in Aherns and Flaherty's *Anastasia*. Her TV credits include all episodes of the Starz Limited Series *Flesh and Bone*, where she learned to hurry up and wait. She has collaborated with incredible artists to perform at the White House, Whitney Biennial, Guggenheim Museum, and Vail International Dance Festival. She is ecstatic to be back at Pittsburgh CLO after performing in 2019's *Oklahoma!*, and especially glad to celebrate Van's legacy! @biggywalsh

SOPHIE AKNIN (*Ensemble*) is overjoyed to be returning to PCLO for this special season. She was last seen as Tootles in *Peter Pan* (2019). BFA Point Park University. Much love to mom, Chloe, Margot, and everyone at PCLO for the opportunity to be back onstage! @sophieaknin

JAMARY GIL (*Ensemble*), Scranton native and graduate of Point Park University, is humbled to be with CLO for the 3rd year! Credits: (PCLO - Ensemble) *Beauty and the Beast*, *Thoroughly Modern Millie*, *Grease*, and *Oklahoma!*; (Disney Magic - Featured Dancer) *Disney Dreams!*; (Scranton Shakespearean Festival - Featured Dancer/Dance Captain) *Ragtime*. Special thanks to everyone who believes in and supports her as she continues her professional journey. 1 Corinthians 13:4. @jamary_a_gil. jamarygil.com.

AKINA KITAZAWA (*Ensemble*) is originally from Japan. She is thrilled to make her debut at Pittsburgh CLO! New York/National Tour: *Candide* (Carnegie Hall), *The King and I* (Eliza), *Over Here!* (Dance Captain/Associate Choreographer, Off-Broadway), Regional: *Jerome Robbins' Broadway* (Eliza), *An American in Paris*, *On the Town*, *Swing!* (West Coast Swing Couple), *Piano Men* (Featured Dancer), *Carnival!* (Dance Captain). Many thanks to mom and dad!! @akinakitazawa

CONNOR McRORY (*Ensemble*) is thrilled to be back performing at the Pittsburgh CLO. His past credits include *Finding Neverland* (First National Tour), *White Christmas* (National Tour), *West Side Story* (Tour), and *Trip of Love* (Off-Broadway). Regional: Pittsburgh CLO (four seasons), MUNY, TUTS, Sacramento Music Circus, Goodspeed Opera, Ogunquit Playhouse, Maine State MT, and more. Proud Penn State graduate.



Who's Who

JERREME RODRIGUEZ (*Ensemble*) recently appeared as William Kemmler in *The Current War* and in *Looking for Violeta* with Quantum Theater. CLO Cabaret credits include *The Double Threat Trio*, *Miss Abigail's Guide to Dating, Mating and Marriage* opposite Paige Davis, and *The Book Of Merman*. Additional credits include Oscar in *Sweat* at Pittsburgh Public, Lucian in *Wig Out!* at Pittsburgh Rep., *The Little Mermaid* and *We Will Rock You* at Pittsburgh Musical Theater. He originated the roles of Mikael/Raina in *I Like To Be Here* for Theater 167 in New York, and portrayed Greg in the national tour of *A Chorus Line*.

DAVIS WAYNE (*Ensemble*) is a Pittsburgh native and thrilled to be back at CLO! Previous CLO credits include: *Newsies*, *Mamma Mia!*, *Full Monty*, *Brigadoon*, *Beauty and the Beast*, and *Thoroughly Modern Millie*. Other favorite Credits include: *Hello, Dolly!* (First National), *Riff* in *Jerome Robbins' Broadway* (Muny), *Tommy Djilas* in *Music Man* (NSMT). Love to all from the back of house to the front. RKHSMBB



CELEBRATING 75 YEARS OF SHOWS

THE ADDAMS FAMILY	2012	GOOD NEWS.....	1949, '79	ON THE TOWN	1958, '98
A GRAND NIGHT FOR SINGING	2012-13	GRAND HOTEL	1999	ON YOUR FEET!	2018
AIDS	2016	GREASE	1989, 2006, '19	PAINT YOUR WAGON	1980
A MUSICAL CHRISTMAS CAROL	1992-2019	THE GREAT WALTZ	1947, '50, '53, '57, '66	THE PALAJAMA GAME	1957, '60, '68, 2000
ALTAR BOYS	2015	GUYS AND DOLLS	1955, '59, '66, '75, '84, 2002	PAL JOEY	1978
ALWAYS PATSY CLINE	2007	GYPSY	1962, '77, '97, 2015	PANAMA HATTI	1954
AN AMERICAN IN PARIS	2017	HAIRSPRAY	2010	PARADE	2000
ANNIE	1989, '96, 2003, '12	HALF A SIXPENCE	1978	PETER PAN	1987, '91, '98, 2008, '19
ANNIE GET YOUR GUN	1950, '52, '56, '60, '72, '81, '88, 2008	HAPPY HUNTING	1958	PERFECT WEDDING	2018
ANYTHING GOES	1942, '77, '86, 2000	THE HAPPY TIME & THE "SOCK IT TO ME GANG"	1969	(KOPIT & YESTON'S) PHANTOM	1998, 2013
APPLAUSE	1973	HARRY BELAFONTE	1962	THE PHANTOM OF THE OPERA	1993
ARTHUR GODFREY REVUE	1964	HELLO, DOLLY!	1986, 2004, '19	PIPPINO	1950
BABES IN TOYLAND	1943, '52	HIGH BUTTON SHOES	1952, '72	PIPPIN	1984
BALALAIKA	1947	HIT THE DECK	1948	THE PIRATES OF PENZANCE	1983, '93, 2005
BARRY MANLOW'S COPACABANA	2000, '09	HOT MIKADO	1994	PLAID TIDINGS	2007, '13
BELLS ARE RINGING	1959, 2001	HOW NOW, DOW JONES	1969	PLAIN AND FANCY	1956
BEST FOOT FORWARD	1955	HOW TO SUCCEED WITHOUT REALLY TRYING	1966, '78	PORGY AND BESS	1953, '65, '91
BEST LITTLE WHOREHOUSE IN TEXAS	1987	I DO! I DO!	1979	PROMISES, PROMISES	2010
THE BIG BANG	2008	I LOVE YOU, YOU'RE PERFECT, NOW CHANGE	2008	PUMP BOYS & DINETTES	1982
BITTERSWEET	1946, '51, '54	IN THE HEIGHTS	2017	THE RED MILL	1948, '79
BLOOMER GIRL	1948	INTO THE WOODS	1996, 2009	RING OF FIRE - THE MUSIC OF JOHNNY CASH	2014
BLOSSOM TIME	1953	JACK BENNY SHOW	1967	RIO RITA	1947, '50
BOEING BOEING	2015	JANE MORGAN SHOW	1968	ROBERTA	1946, '50
BOHEMIAN GIRL	1951	JEKYL & HYDE	2002, '11	ROBERT GOULET REVUE	1963, '66
BOMBAY DREAMS	2006	JERRY LEWIS REVUE	1962	ROBIN HOOD	1946
THE BOOK OF MERMAN	2020	JESUS CHRIST SUPERSTAR	1985, '92, 2011	ROCK OF AGES	2019
THE BOYS FROM SYRACUSE	1954	JOLSON, THE MUSICAL	1999	ROSALIE	1947, '48
BRIGADOON	1950, '55, '60, '65, '74, '82, '92, 2001, '18	JOSEPH AND THE AMAZING TECHNICOLOR DREAMCOAT	1998, 2009	ROSALINDA	1948, '59
BROADWAY TONIGHT	1971	JUDGE JACKIE JUSTICE - A NEW MUSICAL COMEDY	2014	ROSE MARIE	1949, '51, '60
BUDDY - THE BUDDY HOLLY STORY	2000, '13	KING AND I	1956, '60, '65, '74, '89, 2004	ROWAN & MARTIN	1969
BYE, BYE BIRDIE	1967, '72, '99	KINKY BOOTS	2015	RUTHLESS! THE MUSICAL	2012
CABARET	1979, '95	KISMET	1956, '60, '65, '77, '87	S 'WONDERFUL: THE NEW GERSHWIN MUSICAL 2010	2010
CALL ME MADAM	1953	KISS ME, KATE	1950, '55, '61, '68, '73, '82, '87	SARI	1946, '50
CALAMITY JANE	1961	LADY IN THE DARK	1953	SAY, DARLING	1959
CAMELOT	1965, '72, '79, '91, '98, 2007	THE LAST WALTZ	1951	THE SECRET GARDEN	1995
CAN CAN	1958, '62, '75, '86	LE BALLET DE PARIS	1958	SEESAW	1981
CARNIVAL	1982	LEGALLY BLONDE THE MUSICAL	2009, '14	SEVEN BRIDES FOR SEVEN BROTHERS	1994, 2006, '13
CAROL BURNETT REVUE	1962	LES MISERABLES	2009, '09	1776	1975, '76, '87, '96, 2004
CAROUSEL	1952, '57, '63, '78, '85, '92, 2005	LIESERACE	1967	SHEAR MADNESS	2007
CASPER THE MUSICAL	2001	LITTLE ME	1965	SHE LOVES ME	1978, 2003
THE CAT AND THE FIDDLE	1947	A LITTLE NIGHT MUSIC	1975, '91, 2005	SHENANDOAH	1976
CATS	1987, '89, '90, '91, '92, '94, 2007, '14	LOUISIANA PURCHASE	1953	SHIRLEY JONES	1972
CHESS	1987	LOVE CHANGES EVERYTHING: THE MUSIC OF ANDREW LLOYD WEBBER	2011	SHOW BOAT	1948, '51, '54, '60, '66, '73, '92
CHICAGO	2016	LUNCH	1994	SHOW GIRL	1961
THE CHOCOLATE SOLDIER	1949, '61	MAME	1972, '81, '94, 2008	SHREK THE MUSICAL	2016
A CHORUS LINE	1980, '89, 2001, '12	MAMMA MIA!	2017	SID CEASAR & IMOGENE COCA SHOW	1968
CINDERELLA	1981, '90, '97, 2015	MAN OF LA MANCHA	1985, '95, 2015	SIDE BY SIDE BY SONDHEIM	2013
COME FLY AWAY	2012	THE MARVELOUS WONDERETTES	2011	SILK STOCKINGS	1957
COMPANY	1977, 2001	MARY POPPINS	2016	SINGIN' IN THE RAIN	1995, 2002, 2014
THE COLOR PURPLE	2008	MATILDA THE MUSICAL	2015	SMOKEY JOE'S CAFE	2008
COUNTESS MARIITZA	1947	MAY TIME	1950	SONG AND DANCE	1987
CRAZY FOR YOU	1999	ME AND JULIET	1955	SONG OF NORWAY	1949, '55, '62, '67, '84
CURTAINS	2010	ME AND MY GIRL	1992, 2004	SPAMILTON: AN AMERICAN PARODY	2019
DAMN YANKEES	1957, '61, '76, 2016	MEN ARE FROM MARS - WOMEN ARE FROM VENUS LIVE!	2018	THE SOUND OF MUSIC	1964, '68, '73, '81, '88, 2005, '11
DEFENDING THE CAVEMAN	2011-12, '13	THE MERRY WIDOW	1946, '49, '54, '63	SOUTH PACIFIC	1955, '56, '60, '64, '74, '82, '93, 2001, '16
THE DESERT SONG	1947, '50, '52, '56, '66, '85, '96	THE MIKADO	1953	STARLIGHT REVUE	1958
DESTROY RIDES AGAIN	1961	MILK AND HONEY	2017	STOP THE WORLD, I WANT TO GET OFF	1986
DISNEY'S BEAUTY AND THE BEAST	2006, '18	MINNIE'S BOYS	1972	THE STUDENT PRINCE	1952, '54, '59, '65, '74, '82, '90, 2010
DISNEY'S HIGH SCHOOL MUSICAL	2007	MISS ABIGAIL'S GUIDE TO DATING, MATING, & MARRIAGE	2017	SUNSET BOULEVARD	2012
DISNEY'S NEWSIES	2017	MISS LIBERTY	1951	SWEENEY TODD	2012
DISNEY'S THE LITTLE MERMAID	2013, '17	MISS SAIGON	1997, 2003, '10	SWEET CHARITY	1968, '80, '87
DIXIE'S TUPPERWARE PARTY	2017, '14	MONTY PYTHON'S SPAMALOT	2006, '14	SWING!	2009
DOCTOR DOLITTLE	2005	THE MOST HAPPY FELLA	1959, '66, '76, '95	TARKE ME ALONG	1961
DONALD AND DEBBIE - TOGETHER AGAIN	1988	MR. PRESIDENT	1964	THE THREE MUSKETEERS	1947
THE DOUBLE-THREAT TRIO	2019	MURDER FOR TWO	1953	THEY'RE PLAYING OUR SONG	1983
DREAMGIRLS	2004	MUSIC IN THE AIR	1963, '73, '83, '94, 2004	THOROUGHLY MODERN MILLIE	2003, '18
8-TRACK, THE SOUNDS OF THE 70'S	2009	THE MUSIC MAN	1964, '68, '73, '80, '89, '96, 2003	THE 39 STEPS	2016
EVA	1985, '91, 2000, '14	MY FAIR LADY	1964, '68, '73, '80, '89, '96, 2003	THREE WISHES FOR JAMIE	1953
FAME	1993	MY WAY - A MUSICAL TRIBUTE TO FRANK SINATRA	2008	TITANIC	2018
FANNY	1956, '80	THE MYSTERY OF EDWIN DROOD	1988	TOP BANANAS	1964
FIDDLER ON THE ROOF	1975, '86, '94, 2002, '12	NAT "KING" COLE REVUE	1963, '64	TOVARICH	1964
FINIAN'S RAINBOW	1951, '77	NAUGHTY MARIETTA	1946, '49, '53, '59, '80	THE TOXIC AVENGER	2016
FIRORELLI	1993	THE NEW MOON	1946, '48, '68, '76	TRIPLE ESPRESSO	2011
THE FIREFLY	1952, '63	9 TO 5 - THE MUSICAL	2011	THE UNSINKABLE MOLLY BROWN	1963, '89
FIRST DATE	2016	NO, NO, NANETTE	1950, '80, '91	UP AND AWAY	2018
FLOWER DRUM SONG	1962	NUNSENSE	2010, '11	UP IN CENTRAL PARK	1950
FOLLIES	1983	OF THEE I SING	1948	THE VAGABOND KING	1946, '49, '81
FORBIDDEN BROADWAY	2006	OKLAHOMA!	1954, '58, '62, '66, '76, '90, 2007, '19	WAYNE NEWTON SHOW	1967
FOREVER PLAID	2004-05, 2009-10, 2019	OLIVER!	1965, '77, '83, '92, 2010	THE WEDDING SINGER	2015
FOOTLOOSE	2014	ON A CLEAR DAY YOU CAN SEE FOREVER	1967	WEST SIDE STORY	1965, '67, '74, '94, '98, '99, 2008
42ND STREET	1985, '90, '96, 2006, '13	ONCE	2019	WHERE'S CHARLEY?	1951, '75
THE FULL MONTY	2007, '18	ONCE UPON A MATTRESS	1984	WHITE CHRISTMAS	2007
FUNNY GIRL	1967, '69, '88, 2003	ONE-MAN STAR WARS TRILOGY	2019	THE WHO'S TOMMY	2005
A FUNNY THING/FORUM	1973, '86	ONE TOUCH OF VENUS	1952	WISH YOU WERE HERE	1954
GAME ON	2018	110 IN THE SHADE	1984	THE WIZ	1992
GENTLEMEN PREFER BLONDES	1953			THE WIZARD OF OZ	1949, '55, '88, '93, 2002, '21
GEORGE M!	1976, '85, 2002			WONDERFUL TOWN	1958, '63
GIG!	1974, '98			XANADU	2017
GIRL CRAZY	1951			YOU SAY TOMATO, I SAY SHUT UP!	2013
GIRLS ONLY - THE SECRET COMEDY OF WOMEN	2012, '15				
GODSPELL	1995				

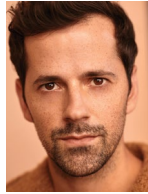
Who's Who



CLAY
AIKEN



NORM
LEWIS



ROBBIE
FAIRCHILD



JACKIE
BURNS



PATRICK
CASSIDY



ALI
EWOLDT



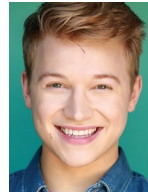
JOSHUA
GROSSO



MANU
NARAYAN



GENNY LIS
PADILLA



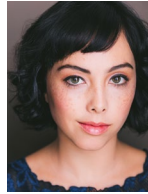
JOE
SERAFINI



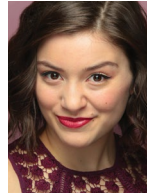
STEPHANIE
UMOH



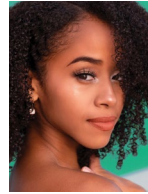
MAX VON
ESSEN



ALLISON
WALSH



SOPHIE
AKNIN



JAMARY
GIL



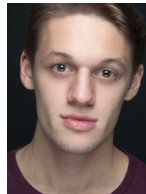
AKINA
KITAZAWA



CONNOR
McRORY



JERREME
RODRIGUEZ



DAVIS
WAYNE

This performance stage made possible by Pittsburgh Ballet Theatre, and by the generous support of: the Richard King Mellon Foundation, the Edith L. Trees Charitable Trust, the Jack Buncher Foundation and the Claude Worthington Benedum Foundation.

THANK YOU VAN

for your tireless work
toward enriching
Pittsburgh's cultural
community!

HERE'S TO A HAPPY AND
HEALTHY RETIREMENT.

*- Helen Hanna Casey, Alex Overstrom
and the CLO Board of Directors*



Who's Who

BAA YORK LEE (*Director/Choreographer*) has performed in a dozen original Broadway shows. She created the role of Connie in *A Chorus Line* while continuing the legacy of Michael Bennett directing companies around the world, most recently the Antonio Banderas company in Spain. She has directed *The King and I*, *South Pacific*, *Rodgers & Hammerstein's Cinderella*, *Porgy and Bess*, *Carmen Jones*, *Jesus Christ Superstar*, *Barnum*, *Gypsy* and others. She founded National Asian Artists Project (NAAP) a 501 (c) 3 Nonprofit. Baayork's vision includes educating, cultivating, and stimulating audiences and artists of Asian descent through the many outreach programs the company offers. She has been the recipient of numerous awards including the Isabelle Stevens Tony Award, Paul Robeson Award from Actors Equity Association, the Arena Stage American Artist Award, the Asian Woman Warrior Award for Lifetime Achievement from Columbia College, and others.

JAMES CUNNINGHAM (*Music Director*) has served as music director for the Pittsburgh CLO summer season since 2017. New York credits include *Avenue Q* (conductor), music director for *Bunnicula* (TheaterworksUSA and original cast recording), *Hot Mess In Manhattan* (Araca Project), and *Happy Birthday* (TACT) for which he also provided original music. National Tours credits as pianist and/or conductor include: *Irving Berlin's White Christmas*, *Monty Python's Spamalot*, *Evita* and *Cats*. Other regional credits include productions for Arena Stage, Casa Mañana, North Carolina Theatre, Sharon Playhouse, Shakespeare Theatre Company, The Engeman Theater, Paper Mill Playhouse, and The Muny. He holds degrees from Manhattan School of Music and New York University.

JASON COLL (*Book Writer/Original Music*) a graduate of Carnegie Mellon University's School of Drama, Jason served as the Creative Director and Associate Artistic Director of Pittsburgh CLO from 1999-2008 where he was proud to launch the CLO Cabaret Theater. He was a member of the prestigious BMI Lehman Engel Advanced Musical Theatre Workshop in New York City and the UCLA Professional Program in Screenwriting. His creative work

with corporate and non-profits includes shows for Caesar's Palace Entertainment, Dollar Bank, Howard Hanna Real Estate Services, The Pittsburgh Technology Council, Wrecking Crew Media, The Children's Museum of Pittsburgh, The Senator John Heinz History Center, and The Frank Lloyd Foundation. Jason has directed and music directed numerous productions for the Pittsburgh CLO including: *A Musical Christmas Carol*, *The Big Bang*, five Richard Rodgers Awards shows honoring Broadway and Hollywood legends Gwen Verdon, Bernadette Peters, Shirley Jones, Rob and Kathleen Marshall, and Stephen Schwartz and several Gallery of Heroes musicals for young audiences. He is also the author of eleven original musicals, six of which have been produced by Pittsburgh CLO's Gallery of Heroes Program: *Above the Clouds: Pioneers of Flight*, *Arriba! Arriba! The Roberto Clemente Story*, *Steel*, *The Amazingly True Adventures of Nellie Bly*, *Young Washington*, and *The Incredibly Innovative Innovators of Pittsburgh*. As an actor, he originated the role of Henry in the world premiere of *Judge Jackie Justice* at the CLO Cabaret.

MARY JANE BRENNAN (*Book Writer*) has been part of the creative team of the Jimmy Awards® since its inception twelve years ago. She is the sole writer of the show, which takes place each year in June at the Minskoff Theatre on Broadway. She has written the script for the production, including dialogue, for dozens of Broadway actors and theatre luminaries appearing in the show, as well as hosts Kathie Lee Gifford, Gregory Jbara, Santino Fontana/Laura Osnes, Zachary Levi, Ben Platt, Laura Benanti and Corbin Bleu. She has been a writer at Pittsburgh CLO since 2008, and was the dramaturg for the world premiere of the original new musical *Judge Jackie Justice* at the CLO Cabaret.

ANDREW GIFFIN (*Lighting Designer/Production Design*) returns to CLO exactly twenty years after his career began as a summer intern in 2001, the same year receiving a Gene Kelly Award for Best Lighting Design for *The Wiz* at Chartiers Valley. He has since graduated from Penn State (which has honored him with an Alumni Achievement Award) and has served as Phish's programmer and

Can you spot “the Xerox” in this photo?



Of course you can, it's the copier (MFP) on the other side of the glass wall.

But what you may not know is that much of the technology in this photo, (and the service behind it) is from Xerox.....and AmCom.

AmCom provides IT Technology such as Laptops, Chromebooks, Servers, DeskTops, Charging Stations.....even Projection Screens .

And, we provide IT Support and Managed IT services across the city or across the country!

**So the next time you need *any* technology
for your office.....call us.
(BTW, we still do copiers!)**



A Xerox Company

www.teamamcom.com

800.242.1625



Who's Who

associate designer since 2009. He has designed the annual *Rock Steelers Style* fashion show since 2015, a decade of WPSU's *Music Theatre Spotlight*, dozens of shows for Princess and Regent cruises, and stage lighting for the James Brown biopic *Get on Up*. Proud to present Pittsburgh theatre to a stadium audience, his work spans the Golden State Warriors, the New York Knicks and Rangers, Ariana Grande's *Honeymoon* world tour, and Justin Bieber's *Believe* world tour. He has also programmed concerts for Eric Church, Neil Young, and Pearl Jam, stages at Coachella, Electric Daisy Carnival, and South by Southwest, the iHeartRadio Music Festival, the Billboard Latin Music Awards, and James Turrell's *Arbol de Luz* in the Yucatán.

JOE SPINOGATTI (*Video Designer*) is thrilled to help CLO celebrate their 75th Season with *The Wizard of Oz* and a Summer under the Stars. Previous work for the Pittsburgh CLO includes *Once* and *Game On*. Other Projection Designs include: *A Few Good Men* (Pittsburgh Public Theater) *Soldier Songs* and *Maecenas XXXV* (Pittsburgh Opera); *The Hard Problem* (Quantum Theatre); *The Who's Tommy* (Pittsburgh Playhouse); *Cop Out* (The August Wilson Red Door Project - Portland, OR and tour); *How Can the Caged Bard Sing* (Miami University); *An Octoroon*, *Holmes and Watson*, *The Christians* (Kinetic Theatre); *Mockingbird*, *In the Time of the Butterflies*, *Perks of Being a Wallflower*, *1984*, *The Giver* (Prime Stage Theatre); *Nine*, *Big Fish*, *Avenue Q* (Pitt Stages). He was a member of the video team for the Broadway Premiere of *American Psycho* and Boeing's *Centennial Projection Spectacular*. JoeSpinogatti.com

NICOLE PAGANO (*Hair Designer*) This is Nicole's 3rd production with Pittsburgh CLO. Additional CLO credits include *Rock of Ages* and *A Musical Christmas Carol*. Nicole has been Assistant to the Wig Master and Makeup Designer for The Pittsburgh Opera for over 15 years. Additionally, Nicole has worked as Wig and Makeup Supervisor for several seasons at The McCarter Theatre in Princeton, New Jersey. Nicole has been the Assistant to the Wig Master and Makeup Designer for both Cincinnati Opera and Cincinnati Ballet. Nicole attended The Cincinnati College-Conservatory of Music where she received her BFA in Theatrical Design

and Production. She also attended South Hills Beauty Academy where she acquired her license in Esthetics.

TRAVIS KLINGLER (*Makeup Designer/Hair and Makeup Supervisor*) is excited to finally be returning to Pittsburgh CLO. Some favorite CLO productions include *Titanic*, *Grease*, *Peter Pan*, *Once*, and *A Musical Christmas Carol*. Travis' theater credits include makeup designer for Minnesota Opera, Pittsburgh Opera, hair and makeup designer for Front Porch Theatricals and Pittsburgh Public Theater where he was hair and makeup designer for their production of *Indecent*. His work has been published in *Cosmopolitan Magazine*, *Glamour Magazine* and seen on the MTV Video Music Awards, HGTV and Netflix. Travis is a graduate of the Pittsburgh Beauty Academy and the Joe Blasco Makeup School in Orlando, Florida. Member of IATSE Local 3. www.travismakeupart.com

JOSHUA TKACZUK (*Assistant Lighting Designer/Associate Production Designer*) is delighted to be making his debut with Pittsburgh CLO. A graduate of the Carnegie Mellon School of Drama, he has spent many years designing and managing production for concert venues and large-scale outdoor events. He has worked as a Site Designer for music festivals such as Moonrise Festival in Baltimore, MD and Lost Lands Festival in Thornville, OH. In his most recent local endeavors, he served as the Production Designer & Theatrical Consultant for the newly renovated Roxian Theatre in McKees Rocks, PA, and formerly was the resident Production Consultant & Lighting Designer for Grey Area Productions and the Rex Theater.

HEATHER ANKLEY (*Production Stage Manager*) has been part of the theater arts in Pittsburgh for over 20 years. She's had the opportunity to work in a variety of entertainment mediums: Musical Theater, Opera, Dance, Comedy and Rock 'n' Roll. Credits include: Pittsburgh CLO's SPARK Festival, *A Musical Christmas Carol*, *Game On*, *Titanic*, *Disney's Beauty and the Beast*, *Brigadoon*, *Disney's Newsies*, *Mamma Mia!*, *Scottsboro Boys*, *Wig Out!*, *Merchant of Venice*, *The Double-Threat Trio* (World Premiere).

Pittsburgh CLO thanks



for their generous support.

WELCOME BACK

INTERMISSION IS OVER!

As a company that proudly supports the communities in which we live and work, MSA is excited to help usher in the return of the performing arts, and with it, the pulse of our great city.

The show must go on!



MSAsafety.com • 1.800.MSA.2222





Who's Who

TIM BRADY (*Assistant Stage Manager*) has stage managed 15 seasons at the CLO Cabaret. As an actor, he has appeared in 11 productions of *A Musical Christmas Carol* and various Summer Season and CLO Cabaret productions with Pittsburgh CLO – most recently *Xanadu*. Other local theaters that Mr. Brady has performed with include The Pittsburgh Pops, Starlight Productions, The New Pittsburgh Jewish Theatre, Stage Right and The Theatre Factory. Mr. Brady was also the managing director of the Conley Inn Dinner Theater in Irwin for 17 years. Tim starred in the Jason Coll television pilot, “Munhall.”

KELLY HAYWOOD (*Assistant Stage Manager*) is ecstatic to be at Heinz Field with PCLO! Favorite past productions with PCLO include: *In the Heights*, *Peter Pan*, *Mamma Mia*, *Million Dollar Quartet*, *Aida*, *Damn Yankees*, *South Pacific*, *Shrek*, *Monty Pythons Spamalot* and *42nd Street*. PICT Classic Theater: *Romeo and Juliet* Kelly has also done several productions with the Pittsburgh Opera, Public and Ballet.

GEOFF JOSSELSO, CSA (*Casting Director*) is a New York-based casting director whose work includes productions for Broadway, Off-Broadway and major New York and regional theatre companies, including the Arena Stage, Actors Theatre of Louisville, Bay Street Theatre, Brooklyn Academy of Music, Bucks County Playhouse, Cape Playhouse, Cleveland Play House, Denver Center, Marriott Theatre, The Old Globe, Oregon Shakespeare Festival, The Public Theatre, Round House Theatre, San Francisco Symphony and the York Theatre Company. He is responsible for casting the Broadway production of *The Velocity of Autumn*, starring Estelle Parsons and many other acclaimed New York productions, including *Southern Comfort*, *Yank!*, *Enter Laughing*, *Pretty Filthy*, *John and Jen*, *Himself and Nora*, *Altar Boyz* and *Septimus and Clarissa*. For more information, please visit geoffjosselson.com.

PITTSBURGH CLO has been a driving force behind the preservation, creation and promotion of live musical theater since 1946. As one of the largest regional musical theater organizations in the country, it is fortunate for the yearly support of nearly 200,000 audience members. In addition to producing fresh new productions of Broadway classics, the not-for-profit's mission is to develop new works and showcase emerging talent, and has been credited with launching the careers of numerous artists such as Billy Porter, Renée Elise Goldsberry, Rob Marshall, Kathleen Marshall, Rob Ashford, Bernadette Peters and Shirley Jones. The organization's dedication to musical theater extends beyond its six-show summer season at the Benedum Center to year-round programming at the 250-seat Cabaret Theater, which saw the world premieres of *Up and Away* and *Game On* in 2018 and *The Double-Threat Trio* in 2019. Its extensive education efforts include a university internship program, New Horizons, and in-school programs such as Gallery of Heroes and Creative Vision. Other ongoing initiatives include the Pittsburgh CLO Academy of Musical Theater, the Construction Center for the Arts, the Richard Rodgers Award, the acclaimed Gene Kelly Awards for Excellence in High School Musical Theater and SPARK, a festival for new small-cast musicals launched in 2018. The organization also founded the National High School Musical Theatre Awards®. To further its mission to grow the art form, Pittsburgh CLO has been involved with 27 Broadway shows (31 Tony Awards®), and in 2014 produced the world premiere of *An American in Paris* in Paris, then on Broadway, where it won 4 Tony Awards® and was the most awarded musical of the 2015 season, and in London's West End. Pittsburgh CLO is the subject of a 2007 film starring Jeff Goldblum titled “PITTSBURGH.” pittsburghCLO.org.

PITTSBURGH CLO ACADEMY

FOR MUSICAL THEATER

Pittsburgh's premier student-training program dedicated
to celebrating talent and encouraging dreams



Impacting Lives in our Community

pittsburghCLO.org/education

Who's Who



VAN KAPLAN (CEO) joined Pittsburgh CLO in 1997. In addition to overseeing the organization's year-round producing and programming efforts, he has produced or co-produced the Broadway productions of *The Lifespan of a Fact*, *American Son*, *On Your Feet!*, *The Elephant Man* with Bradley Cooper, *Farinelli and the King* with Mark Rylance, *Evita*, *Catch Me If You Can*, *Come Fly Away*, *The Addams Family* and *An American in Paris*. He has also produced touring productions of *Camelot*, *Joseph and the Amazing Technicolor Dreamcoat*, *Phantom*, *Singin' in the Rain*, *Chess*, *Grand Hotel*, *City of Angels*, *Evita*, *Brigadoon* and *Nunsense II*. His directorial credits include *Guys and Dolls* with Victoria Clark, *She Loves Me*, *West Side Story* with Max Von Essen and Ali Ewoldt, *Kopit & Yeston's Phantom*, *On the Town*, *Sweeney Todd* with Candy Buckley, *South Pacific* with Cathy Rigby, *Nunsense*, *Shear Madness*, *Ruthless!*, *Guys and Dolls* with Georgia Engel and the regional premiere of Andrew Bovell's *Speaking in Tongues* at Pittsburgh's Quantum Theater. Since 2009 he has directed The Jimmy Awards® at the Minskoff Theatre on Broadway. He has also directed original shows for Caesars Entertainment at the Rio, Paris and Bally's Hotels in Las Vegas. He has consulted for the National Endowment for the Arts, is a former Theatre Panel chair for the Texas Commission on the Arts, and has served as adjunct professor for Carnegie Mellon's Masters of Arts Management Program. He is a member of the Board of Governors of The Broadway League, serves on the Investment Committee of the Independent Presenters Network (IPN) and is past president of The National Alliance for Musical Theatre (NAMT). He is the Co-founder of the National High School Musical Theatre Awards® - also known as The Jimmy Awards®, the subject of a 3-part documentary series that aired nationally on PBS. He has been a Tony Awards® voter for more than 20 years.



MARK FLEISCHER (Executive Producer) In addition to working as the line producer for CLO's Summer Season, Kara Cabaret Series and annual production of *A Musical Christmas Carol*, Mark launched the CLO's SPARK Festival initiative for new small musicals



– a program made possible from the CLO's Next Generation Capital Campaign. Since its creation in 2017, the program has contributed to the development of more than 15 new musicals including the world premieres of *Up and Away* by Kevin Hammonds and Kristin Bair, *Game On* by Marcus Stevens and David Dabbon, *Beyond the Moon* by Joe Domencic and Christina McCann, and *The Double-Threat Trio* by Adam Overett. Prior to joining the CLO, Mark was the Producing Artistic Director for Adirondack Theatre Festival from 2007 – 2014 where he was named Regions Best Artistic Director by *Metroland* in 2009 and Managing Artistic Director for Plano Repertory Theatre in suburban Dallas from 1993 – 2002. With a passion for new plays and musicals, he has led readings, residencies and world premiere productions for theatres across the country. He is a Board Member of the National Alliance for Musical Theatre (NAMT) having also served on the organization's Educational Resources, New Musicals Festival, Fall and Spring Conference committees. He has served on grant review panels for both the New York and Texas State Council on the Arts. He has taught acting, theatre history and arts administration courses at SUNY Empire State College, Columbia College, and Collin College. Mark holds a BA in English Literature and Communication Arts from Austin College and an MFA in Directing from the Theatre School at DePaul University.



SUPPORT · ENGAGE NETWORK · VOLUNTEER



The mission of the Pittsburgh CLO Ambassadors is to support and broaden the reach and diversity of the Pittsburgh CLO and to make musical theater an active and accessible part of the lives of its members and others through the organization of and participation in a combination of theatrical, social, fundraising, volunteer, and educational events.

BECOME A CLO AMBASSADOR TODAY!

pittsburghCLO.org/Ambassadors



**PITTSBURGH CLO'S 75TH ANNIVERSARY GALA AND SUMMER UNDER
THE STARS WOULD NOT BE POSSIBLE WITHOUT THE GENEROUS
SUPPORT FROM THESE SPONSORS AND DONORS**

**The Michael J. Kara Family
Bill and Sandy Lambert**

**Howard Hanna Real Estate Services
Helen and Stephen Casey
HRH Foundation
PNC**

**ALCO Parking
Mary Jane Brennan and Van Kaplan
Kathy and Joe Guyaux
Robert C. McCartney**

Dollar Bank

UPMC and UPMC Health Plan

**Debby and Dan Booker
Diane and Mark Minnaugh
Henry L. Hillman Foundation**

**Highmark
MSA Safety
Massey Charitable Trust**

**Bozzone Family Foundation
Cate Linn
Delta Air Lines
Sloan and Alexander Overstrom
Hefren-Tilloston**

**Reed Smith
Suzanne F. and Edward T. Karlovich
Tri State Capital Bank
Koppers, Inc.**

**Joan Clark Davis
Annie and Gus Engel
Ernst and Young
Federated Hermes
Giant Eagle, Inc.**

**The Heinz Endowments
Leslie Hyde
Chris and Tom Kobus
Ramsey and Mike Lyons
Pittsburgh Steelers
Point Park University**

**Sharon and Jim Rohr
Arlene and Barry Sokolow
System One
Stephanie and Glenn Todd
Diane and Dennis Unkovic**

Holly and Mark Fleischer

**KPMG, LLP
Lynda and Bob Jamison**

Debbie and Gary Truitt

75th Chairs

**Christina O'Toole
*Anniversary Committee***

**Sloan Overstrom
*Gala Chair***

WE ALSO WISH TO THANK OUR GOVERNMENTAL PARTNERS

**Pennsylvania Department of Community
and Economic Development
Allegheny Regional Asset District**



Pittsburgh CLO Donors

Pittsburgh CLO thanks its many donors and community partners who have supported the Annual and Raise the Curtain Campaigns through June 30, 2021. Their support plays a critical role in helping CLO provide the very best in musical theater and arts education programs throughout the region.

The Pittsburgh CLO is grateful for the generous support provided by The Pittsburgh Cultural Trust

Corporate and Foundation Donors

CORPORATIONS

DIAMOND CIRCLE

(\$25,000 and above)

Alco Parking
#1 Cochran
Dollar Bank
Healthcare Trust of America, Inc.
Highmark
Howard Hanna Real Estate Services
Mine Safety Appliances Company
Omni William Penn Hotel
Pittsburgh Post-Gazette
PNC Financial Services Group, Inc.
WTAE-TV

GOLD CIRCLE

(\$10,000-\$24,999)

Chubb Group of Insurance Companies
Deloitte
Federal Home Loan Bank of Pittsburgh
First National Bank of Pennsylvania
Giant Eagle, Inc.
Hefren-Tillotson, Inc.
KeyBank
Point Park University
Reed Smith LLP
The Frank E. Rath - Spang & Company
Charitable Trust
UPMC

SILVER CIRCLE

(\$5,000-\$9,999)

Clark Hill PLC
Delta Airlines
Ernst & Young
K&L Gates LLP
KPMG, LLP
Federated Hermes, Inc.
Meyer, Unkovic & Scott LLP
Wabtec Foundation

EXECUTIVE PRODUCER'S CIRCLE

(\$2,500-\$4,999)

AT&T
Development Dimensions International
Ernst & Young
First Commonwealth Bank
Grant Thornton LLP
HHM Insurors
Koppers Inc.
Mars National Bank
McKnight Realty Partners
Post & Schell
Saul Ewing Armstrong & Lehr, LLP
Tudi Mechanical Systems
Two Men And A Truck
Vorys, Sater, Seymour and Pease LLP

PRODUCER'S CIRCLE

(\$1,000-\$2,499)

Anonymous
Ampco-Pittsburgh Charitable
Foundation
Bender Leadership Academy
Champ Printing Company
CivicScience Inc.

Duquesne Club
Eat'n Park Hospitality Group
National Alliance for Musical Theatre
Pietragallo Gordon Alfano Bosick &
Raspanti, LLP
Standard Bank
UPMC Health Plan
VisitPITTSBURGH

DIRECTOR'S CIRCLE

(\$500-\$999)

Classic Car Club of America Museum
IMO Walter Blenko

The following have provided matching gifts for their employees' contributions to Pittsburgh CLO:

3M Foundation
AT&T
Aetna Foundation
Argo Group
BNY Mellon
ChevronTexaco
Dell
Dollar Bank
Dominion Foundation
Eaton Corporation
Emerson Electric Company
EQT Foundation
Equitrans Midstream
Google
Highmark, Inc.
IBM Corporation
Koppers, Inc.
Merck
Microsoft Corporation
PNC Foundation
PPG
Thermo Fisher Scientific
United Health Group
Viacom CBS

FOUNDATION SUPPORT

Allegheny Foundation
Bozzone Family Foundation
Charity Randall Foundation
The Anne L. and George H. Clapp
Charitable and Educational Trust
Community Foundation of
Fayette County
Cooper-Siegel Family Foundation
Edith L. Trees Charitable Trust
Ganassi Foundation
William F. Gauss and Lynn D. Gauss
Foundation
The Grable Foundation
The Heinz Endowments
HRH Foundation
Richard King Mellon Foundation
Laurel Foundation
Massey Charitable Trust
Founders: Harris B. Massey and
Doris J. Massey
McKinney Charitable Foundation
Milton G. Hulme Charitable Foundation
The Vernon C. Neal & Alvina B. Neal Fund
Pauline Pickens Charitable Trust
The Pittsburgh Foundation
Irene C. Shea Charitable Foundation
Robert and Mary Weisbrod Foundation

GOVERNMENT SUPPORT

Allegheny Regional Asset District
COVID-19 NEA Grants to the Arts
Pennsylvania Council on the Arts
Pennsylvania Department of
Community and Economic
Development COVID-19 Cultural and
Museum Preservation Grant Program

Individual Donors

GENE KELLY PRODUCERS SOCIETY

TITLE PRODUCERS

(\$25,000 and above)

The Estate of Donald B. Arnheim
Stephen and Helen Hanna Casey
The Estate of Eleanor Dragan
Dolores Kara
Bill & Sandy Lambert
Mr. & Mrs. Robert C. McCartney

LEAD PRODUCERS

(\$15,000-\$24,999)

Joe & Kathy Guyaux

EXECUTIVE PRODUCERS

(\$10,000-\$14,999)

Dan and Debby Booker
Hal and Kimberly Burch
Jeff and Lesley Evancho
Mr. and Mrs. Peter J. Germain
Cate Linn
Mark & Diane Minnaugh
Mr. & Mrs. James E. Rohr
Ron and Patricia Viola

PRODUCING DIRECTORS

(\$5,000-\$9,999)

Pritam and Binu Advani
Michael and Carol Bleier
Jerry and Barbara Chait
Laurel Dagnon and Patricia Jarrett
Mr. & Mrs. George A. Davidson, Jr.
Jerry and Mimi Davis
Joe & Karen DiVito
Gus and Annie Hanna Engel
Kim & Curt Fleming
9Rootops
Specialty Conduit & Manufacturing, LLC
Henderson Brothers
Deborah Johnson
Edward T. and Suzanne F. Karlovich
Tom & Chris Kobus
Laura Penrod Kronk
Nicholas and Anne Liparulo
Mr. Allyn J. Lynch
John Keith Maitland Fund of
The Pittsburgh Foundation
Jim and Lisa McQuade
Leah and Paul Ohodnicki
Mr. and Mrs. Alexander Overstrom
Robert and Christine Pietrandrea
Luke and Allison Sizemore
Carol H. Tillotson IMO Anne C. and
Arthur R. Hefren
Glenn & Stephanie Todd
Stephan and Debra Todd
Gary and Debbie Truitt



Pittsburgh CLO Donors

PRODUCERS

(\$3,000-\$4,999)

Anonymous
William P. Anderson
Richard & Mary Ellen Anzaldi
Jose and Meghan Barrera
Paul E. Block IMO Don Arnheim
Jim and Kristin Brennan
Bryan and Cindy Cipoletti
Belinda Coyner
Phyllis C. Davidson
Joan Clark Davis
Jim and Karen Dionise
Jane & Michael Dixon IMO Cheryl Young
Melinda and James Edwards
David & Carol Eibling
Cathy and Randy Emanuelson
Jeff and Jennifer Erdely
David and Deborah Freeman
The Honorable Robert C. Gallo IMO
Violet Gallo
George and Daphna Gans
The Gillman Family Foundation
Patrick A. Gray
Mr. & Mrs. Robert A. Harlan
Vicki C. Henn
Leslie Hyde
Deedra Kay
Dr. Diane Beynon Landers
John and Lisa Lemmex
Raymond & Karen Love
The Malandro Family
John & Cathy Mary
Michael and Wanda McGarry
Janice and Ernie Meade
Ed and Deb Moretti
Miriam & Todd Moules
Laurie Burkhart Mushinsky
David & Johanna O'Loughlin
Brian Pitell
Roseann Rosnick
Jim and Linda Rumbaugh
Julie Sieger and George Johnson
Arlene & Barry Sokolow IMO
Anna & Nicholas Zerkovic
Walter L. Startzel IHO Van Kaplan
Marcia and Louis Swartz
Melissa and Charles Tea
Melissa Ungar
Dennis and Diane Unkovic
Mr. & Mrs. William H. Van Duzer
Tom and Lynne VanHimbergen
Michael and Jane Venum
Travis and Nikki Viglione Williams
Tim & Linda Zimmerman
Yarone and Tiffany Zoher

ASSOCIATE PRODUCERS

(\$1,500-\$2,999)

Anonymous
Tripp and Nancy Amick
Jen Bohland-Anhalt & Joshua Anhalt
Laura Barry IMO my brother, Greg Matz
Dr. Vitasta Bazaz & Sheen Sehgal Fund
IMO Dr. Kuldeep Sehgal
Joyce Bender
Stephen and Dana Bloomburg
Mr. & Mrs. Alfred Bonfiglio
Mrs. Roland (Nanette) Catarinella
William and Jennifer Chufu
Elizabeth Ann Connor
Harry, Martin, and Anne Davis IHO
Dan and Debby Booker
Stacy and Christopher Dee
John Dick
Mr. and Mrs. Richard Dougherty
Patrick and Mary Lynn Dugan
Wynne Rooney Fedele IHO
George and Sally Rooney

The Estate of Eleanor Schano
Dr. Edward L. Foley
Warren R. Fugate
Debbie I. Furey
Joy Cone Company
Mrs. Lori Giordano-Bosiljevac
Sherri Grasak
Charlie and Patricia Gray IHO the
administrative and production staffs
Christy Grunebach and Aaron Kolko IMO
Dr. Susan Cohen (Aunt Susan)
Richard S. Hamilton Foundation
MAC and George Hoover
Greg and Debbie Knowles
D. H. Lee, Jr.
The Kubica Family
Fred and JoEllen Leech
Richard and Lynn Lipovich
Susan Romig McKee IMO Walter Blenko
Margaret A. McLean and Stanley Yorz
Scott & Jennifer Neill
William Nimick
Randall Olson
Christina O'Toole IMO Paul & Helen Triko
Paul & Paula Palmer IHO Cindy Opatick
Maria and Rocco Panucci
Jean Marie Perry
William Perry
Robin Randall
Adam and Patricia Davidson
Georgiana Riley
Leslie and Peter Robinson
Hon. Eugene F. & Mrs. Sheila Scanlon
Eric and Michele Schaffer
Ken and Toni Senator
Sitko Bruno, LLC
George and Helen Spalaris
Mark and Tammy Steele
Tom and Jayne Sterling
Joann L. Tissue
Elizabeth Toole
Mr. & Mrs. Richard J. Voller
Carla J. Vrsansky, Esq.
Reverend Thomas A. Wagner
Greg and Lori Weimer
Mr. & Mrs. W. Robert Wells
Matt Williams in loving memory of
Teresa and Robert Williams
Dana and Sarah Yealy
Dr. and Mrs. Victor Zakowski IMO
Walter Blenko
Dr. Audrey Zerkovic IMO
Anna & Nicholas Zerkovic

PATRONS

(\$500-\$1,499)

Anonymous
Michele and Pat Atkins
Kathryn and James Bann
Dr. Ivan and Sybil Baumwell
Phyllis Bertok and Rich Lopretto
Kevin Biber
George Bielich
Joan Margaret Blasinsky
Don and Marica Blenko IMO
Walter Blenko
Deborah and James Boughner
Steffie Bozic
Alan M. Brown IHO Jerry Olsen
Ellen Carabin
Linda Carpenter
James P. Cassaro
Heather M. Chappars
Tom and Dale Christopher
Mrs. Crystal A. Deming
Ed & Ellen Dillon
Mr. and Mrs. Thomas Donahue
Carl Dudeck, Jr.
Marylou Durr
John and Ellen Eichleay IHO
Steve and Helen Casey
Theresa B. Fedio
Jeffrey & Karen Fink
Sarah Finney
Frank and Cindy Fisher
Hans and Leslie Fleischner
Laura Ford
Alvaro and Sandra Garcia-Tunon
Kimberly L. Geidel
Andrew Giffin
Nicholas Ginsberg
Mr. & Mrs. Kurt Gottschalk
Rev. Dr. James R. Getz
Gretchen & Jim Haggerty
George and Rita Hathaway
Emily Heidish IMO John G. Heidish
Richard and Ruth Ann Hess
Edward Howe
Diane Johnson
Gina Johnson IMO Kathleen Piatt
Mary Kellam IMO Robert C. Milsom
Jeff Kent IMO Peggy Paul
(Emmett's Grammy)
Arthur Kerr
Diana M. Kobus
Stephanie Krick
John and MaryAdele Krolikowski
Lucia Lazzara-Goodrich
Catherine and Mark H. Loevner IHO
Helen Hanna Casey
Mr. and Mrs. Russell S. Long
James & Jennifer Martin
Dr. & Mrs. Brendan McGuire
Richard and Nancy McKnight
Catherine Mechling
Harold and Leslie Reidenbaugh IHO
Janet Montgomery
Charles and Anna Moorhead
Thomas and Marcia Morton
Bonita M. Mullaugh
Mr. and Mrs. James J. O'Neill
Todd and M'Lisa Oravitz
Tara and Eric Park
Enkompas Technology Solutions
Helen & Steven Patricia
The Pollon Family IHO
Vanessa Candeava
Christopher and Mary Rawson
Susie and Jerry Robinson
Shannon and Jim Rohr, Jr.
Michael and Mary Ross
James and Shannon Rowland
Iva and Gene Saraceni IMO our daughter,
Elyse Jeanne Saraceni
Clyde Schmertzel
Bob and Lori Shelow
James A. Sims
Joseph and Lynn Smith
Richard and Jane Snedden
Judy Wolfe
Rob and Jane Spicher
Mr. & Mrs. James C. Stalder
Randi L. Starr
Robert and Gail Stevens
The Stoffel Family IMO Dale Stoffel
Richard and Linda Stringert
The Thomas and Sandra Stroyne
Family Fund
Carolyn Turner
Betsy and Tom Teti IMO
Anne E. and Charles M. Lynn
Joann L. Tissue
Charles and Sue Turner
Sally Wade
Michael and Lisa Walsh
William J. Walsko
Ramona Ward
Mr. and Mrs. Thomas Wash
Melvin Washington



Pittsburgh CLO Donors

Michael and Shelby Wherry
Mr. and Mrs. Robert W. Wickerham
Giulia Wildpret
Julie Wiles
Doris Carson Williams
J. Dennis Wilson
Ava Wilson
Randy and Patti Wynkoop
Shelley and Peg Zomak

SPONSORS

(\$250-\$499)

Anonymous
John Aiello
Geoffrey and Jeannette Anderson
Joann S. Anderson
Michael Arrigo
Mr. and Mrs. Gerald Bartolomucci
The Bartosh Family
Diana Biordi, Ph.D.
Ron E. Bittner
Sharon N. Bogarad & Ron Kinney
Bohley Family
Pamela Bolkovac
Charles & Shelly Bossong
Jake Boyce
John and Robbie Boyd
Kathleen Boykin
Margaret and Norman Brawdy
Russ Carley
Robert and Suzanne Chisler
Stephanie and Preston Ciranni
Mr. Edward E. Clever IMO Barbara J. Clever
Michele Rone Cooper
Bill and Sue Cutri Fund of the Pittsburgh Foundation
Chris & Cindy Daly
Sharon Deluca
Ronald Dewalt and Kevin Zadeh
Peter and Melba Dibble
Gerald "Yonk" Di Loreto
James and Theresa Doerfler
Jaime N. Doherty
Paula S. Dorsch
Angela and Richard Douglas
Merrill and Theresa Druggs
Natalie Earls
Dr. James N. Edmonds Jr.
Christopher Evans
Dr. Peggy Farrah IMO brothers,
Sonny & Bobby
Heather Fennick
Bob and Jane Fiedler
Mr. & Mrs. David F. Figgins
Mr. & Mrs. Robert L. Fletcher
Mr. Gene S. Forsythe
Edward and Marilyn Fortwangler
Antoinette Fromm
Mr. and Mrs. William D. Ghrist III
Clem, Julie, Aurelia, Elliana & Clemente Gliotti
Charles and Linda Guttilla
Martina Hahn and Steve Mader
Amanda Colleen Harris
Ms. Paula Heil
Timothy Hibbard
Amy and Paul Hoback
David and Carol Hoch
Judy E. Hodgson
Tom and Janet Huddleston
Charles Hunnell
Marjorie & James Hunter
Gina Hutton
Camille Huzzard IMO her musical-loving daughter, Emma
Jeff Irwin, D.D.S.
Thomas R. Johnson IMO Joe Jackson
Ms. Sherdina Jones
Nasrin and John Jordan

Craig and Stacey Kaforey
Spencer and Cait Sturgeon
Caitlin Kaminski
William B. Kania
Ms. Vicki M. Kelley
Stefanie Morosky & Clinton Kelly
Gary and Betty Kessler
Kimberly Kifer
Bryan C. King
Michael Klima
Brian and Suzanne Koble
Angela M. Kokovich
Gene F. Kreashko
Joan E. Lavery IMO John P. Lavery
Mr. and Mrs. Shawn Leifheit
Darren and Linda Leonard
Edward Lesoon III IMO
Loretta and Lee Kline
Tinsy Lipchak IMO
Ellen Haggerty Granger
David M. and Joyce E. Lipkin
Margery J. Loevner
Tricia and Johanna Loughran
Kate Loy
Kay Manecke
Jeff Mangone & Jennifer Gerhard
Mangone IMO the CLO Orchestra
Richard Marciniak
Valerie and Ronald May
Dr. and Mrs. James McCann
Mr. and Mrs. Samuel McClure
Mrs. John P. McClymonds
Michael and Jacqueline McConnell
Dr. Graham and Elizabeth McIntosh
Kevin & Kristen McMahon
Elizabeth Metrovich
Mrs. Joan Milsom
Ms. Niveditha Mohan
Mary Ann and Terry Mohr
Carroll and David Morrison
The Murray Family
Tim and Carol Murray
David Nace and Erika Hoffman
Jeff & Patty Nayhouse
Amy and Mike Nerone
David & June Nimick
Mr. and Mrs. James R. Okonak
Jerry and Mickey O'Neill IMO
Betty O'Neill and Ann Neelan Smith
Ed & Lisa Palombo
The Pappafava Family
William and Helena Pietragallo IMO
Helen Casey
Gary Pivrotto
Jeffrey Hertweck and Christine Prince
IMO Mary Ann Hertweck
Edward and Anna Marie Rice
Mona and Bob Riordan
Andrea L. Rockovich
John and Joni Roland
Mrs. John M. Sadler
Susan Sargent
Paul Schamer
Carl W. Schultz
Mary J. Seghi
Ann K. Shaner
A. Shaulis IMO Theresa Cardillo and Ronald Shaulis
Sal and Maria Sirabella
Ira and Lucy Snyder
Susanne and Ron Sommer
William Soost
Helen Sosso
Cheryl Spuhler IMO Dana Spuhler
Kathy and Alan Stehman
Richard Stewart
Janet E. Stout
Michelle & Jerry Stovka
Robert and Brenda Tate
Mary Ann Templeton
Dick and Jana Thomas

Mr. & Mrs. Regis Tomsey
Reverend James R. Torquato
Mr. and Mrs. Jeffrey Trabbold, IHO
our wonderful Grandchildren
Elizabeth Trocchio IMO Zoe Belle Snyder
David M. Turrentine
Joseph & Bernadette Valero
Jane A. Vaselenak
James and Rebecca Vesely IMO
Louis and Anna Vesely
Paul Victor
Kathrine and Garrett Waters
Mary Jo Weillnau
Mr. & Mrs. Richard L. White
Dr. & Mrs. John & Valerie Williams
Mr. John C. Williams, Jr.
Joseph Wingenfied
Alan & Maureen Wirth
Janice Wirth
Tom Wyse, Jr. and Robert A. Neft
Louise Yeiser McAlpin IMO
Jessie Joslin Haggart

LIMELIGHTERS

(\$100-\$249)

Anonymous
Anonymous IMO Allison
Anonymous IMO Marie Graham
John and Doreen Abbaticco
A. L. Abramovitz
Judith and Seth Adelson
Dr. & Mrs. Lee T. Agostini
Diane Aikens
John and Diane Aikens
Ted and Donna Alexovich
Elizabeth R. Amber IMO
James M. Emswiler
Michael and Karen Amrhein
Charles and Veronica Anchors
Catherine Angelo IMO Mr. Michael Angelo
Jere and Rozan Antonetti
Mr. and Mrs. Wayne D. Armstrong
Nancy Arshoun
Sandy Artzberger
James R. Atwell
Char and Alan Augenstein
George W. Ayres
David L. Bailey
Mary Ann Baker
Heidi G. Balas
Debra Baldesberger
Marlynn Baldo
Charles and Colleen Balsano
Bruce Baric
Cissy Bassett
Robert Bates
Lynne Bateson
Mr. and Mrs. Donald Baux
Ms. Barbara A. Beachley
Robert and Helen Fitzgibbon
Roger D. Beck
Susan Beck IMO Josephine Kaminsky
Jenny and John Becker
Mark Beighey
Elaine M. Bellin IMO Annie Engel
David and Sharon Bellotti
Paul G. Benedum, Jr.
Diane Berquist IMO
Michael J. Berquist, Esq.
Mr. & Mrs. J. Bianchin, III
Evelyn Bienemann
Mr. David Blackmore
Thomas Blazina
Charles Bleil
Robert C. Blough, Jr.
Athena S. Bober IMO Walter Blenko
Weia Boelema & Ken Manders IMO
Jeanne Manders
Megan Bombick



Pittsburgh CLO Donors

David and Debbie Boncek
Mr. and Mrs. Dale Booker
Judith Bookhamer
Danielle and Pat Boston
Ken and Rose Bowen
Lillian M. Brandimarti
Trish Breuer
David and Karen Brienza
Mark and Beth Brletich
Leslie Brockett
The Brough Family
Gary Brown
Mr. and Mrs. Steve Brown
Mr. & Mrs. Edward E. Brunins
David Dean Brzozowski
Bud and Debbie Burnett
Integrated System Diagnostics, LLC
Allison M. Cahill IMO Margaret M. Cahill
Dr. Paul J. Lebovitz &
Mr. Mark J. Caldone
Eric and Rita Calfo
Deborah and Douglas Cameron
Barbara Campbell
Karen Campbell
Mr. and Mrs. S. Donald Campbell
Edward and Margaret Cannon
Felicitas Caracoché
Donald Carr
Patricia and Gary Caruso
Melissa Casazza
Dan and Doreen Casey
Patricia Cawley
Dr. and Mrs. Richard Centar
Michael and Sharon Cercone
Greg Chapman
Marie Charles IMO Carolyn Tady
Clifford Chen and Robin Ziegler
Samantha Chugh
Frank and Theresa Cicci
Gary and Jo Ann Claus
Kevin Cleary
Edward Cleis
Carolyn Clevenger
Thomas M. Cloherty
Nat and Diane Cohen IHO Jim Mercer
Kathryn Connor and Ian Cook
Jeanne T. Conrad
Mr. and Mrs. James J. Conte
William and Joyce Cooper
Dr. and Mrs. Joseph G. Coroso
Gina Crawford
Aldo Crisante
Charles Croskey
Dennis Crovella
Ruth and Carl Crowe IHO Tristan Shay
Cindy Crysler IMO Myrtle Friend and
Cheryl O'Day
Steve Cuden IMO Leon Zions
Frederick and Joy Cullen
Janet Cummings
Catherine M. Daily IMO Hazel P. Daily
Holly Lynn Dalesandro
Ann M. Dalton IMO James F. Dalton
Gerry Dalton
George and Kathleen Daniels
Katherine D'Antonio
David Dauey
Amy Davis
Paige Davis and Patrick Page
Christopher and NancyEllen de Fiebre
Nancy C. Debranski-Ferrell IMO My Mom,
Rose A. Debranski
Holly M. Deemer
Lori J. Defilippi
Kathleen Deis
Heather Delaney
Joseph and Sara DeLucia
The Denny Family
Edward H. DePasquale IMO
Henry DePasquale

Abby DeRiggi
Bobbie Renee DiClaudio
Heather Dieckmann
Danette DiMarco and Harold Domville
Anna and Domenic DiPilato IMO
Walter Blenko
Ann Dixon
Mr. & Mrs. Frank C. Dlubak
Beth Ann Docherty IMO Janet Docherty
Jennie and Mike Dodge
Steven Doerfler
Mrs. Clare Donahue IMO Thomas M.
Donahue
Faith Dower
John Dreistadt
Paul S. Drost
Susie Duff
Michael J. Dugan
Patrick and Marcia Dunphy
Mary Jane Edwards
Howard and Jan Engelberg IHO
Joan and Sam Kamin
Jim & Jan Engleson
Debra S. Ermel IMO my Dad,
Thomas Ermel
John and Cyndy Erskine
Mike & Margie Evans
Grace Faber
Stephen Fallon
Mark and Carolyn Farabaugh
Suzanne Faris
George K. Farrell
Mary and Ed Faust
Frederick R. Favo
Jacqueline Fennell
Adrian and Geri Fenton
Stephen M. Ferber
Emily Ferri IMO Edward and Carole Ferri
Dana Ferry & Sharon Elkettani
Tom and Sue Finegan
Jim and Paula Fiorucci IMO
Carol Fiorucci
Daniel and Francine Flaherty
Mr. & Mrs. William Flanagan
Mark Fleischer and Holly Breuer
Amber Flevaris and Johnathan Roppo
Lou and Vicki Flotta
Mike Flowers & Diane Jefchak
5 Js
Angela M. Foglia
Diane Forrest
Anna Mamo & Andrew Fournaridis
Mr. & Mrs. Paul K. Fox
Kenneth T. Frankenbery
J. Peter and Wendy Freed
Katherine and John Freed
Robert and Jennifer Freeman
Friedlander Family
Richard and Linda Froehlich
Elaine and John Frombach
John, Cynthia, & Jane Fusco
Chuck and Jackie Fusina
Richard and Jessica Galardini
Annette D. Ganassi
John and Sandy Gandolfi
Otis and Angeline Gandy
Damian and Hayah George
Gereke Family IMO Ethan & IHO Celeste
Alfred & Melanie Gerstel
Nancy & Ron Giallonardo
Barbara Gilbert
Mr. and Mrs. Carl Gilbert
Amanda Godley and Ken Fisher
Ralph and Gretchen Goetz
Dr. and Mrs. Howard R. Goldberg
Melissa and Michael Stenborg IMO
Jeremy Dentel and Ellen Granger
Pat Goodnow
Mr. and Mrs. Thomas J. Gothie
Jill Amber Graham

Cyndy Graves
Jason Gray
Mr. and Mrs. William Greb
Eddie Grimes IMO Greg Triko
Carol Sikov Gross
Marjorie C. Gross
Anthony and Jean Grover IMO
Janet McCartney
Mark Gudalis
Jim and Robin Gump
Hank and Laura Gund
Linda Haddad IMO Annetta Priore
Teresa Mrozokli Halbedl
Dr. & Mrs. Paul H. Haley
Doug and Dianne Hall
Mr. and Mrs. Joseph Hallo
Judy Haluka & M.C. Nash
Denise Hampson
Kari Handa IHO The Staff of Pittsburgh
CLO Academy
Betty Harris
Robert Harrison
Jessica L. Hatherill
Suzi Hauman
Mr. Joseph Havics
Linda J. Haynes, MD
Randall and Barbara Henry
David G. Hills
Dr. Benjamin Hines
Mary and Leo Hitt
Janice L. Hixson
Paul S. Pieffer and Janice Hlad-Pieffer
Teri Hodgson
Lois M. Hoffman
Pauline and Joan Hoffman
Tom and Linda Hohn
Mary E. Holmes
N. Holston
Daniel and Vicki Holthaus
Ava Hom
Larry and Denise Hoover
Mr. Bruce Hostler
Bruce Hotton
Mr. and Mrs. Ben Andrew Huber
Ray & Bonnie Humbertson
Michael Hunter & Scott J. Donaldson
Catherine Hyland
Charity Imbrie & Jane Barnes
Jan and Ken Janowitz
Tom Wenston and Harry Java, Jr.
Craig and Debbie Johnson
Mr. and Mrs. Ronald E. Johnson
Melinda Johnson
Russell W. Johnson
Lynn Johnson-Hurley
Dr. and Mrs. Ralph E. Jones
Dr. & Mrs. Robert T. Jones, Jr.
Independent Recycling Services
Marcus Julius
Shawn and Elizabeth Kaciubij
Elaine Kaczmarek IMO Dorothy Procupp
and Joanne Readshaw
Karen Kaelin IMO Ronald Kaelin
Sherry Kai
Brad Kaiser
Jim and Cheryl Kassner
David Kazimer
The Kehm Family
John Keksz
Adria Kelleher
Donald M. Keller
Patsy & PK Kennedy
Mr. & Mrs. Joseph Kenney
Ben, Jean and Eric Kensingner
Mr. and Mrs. William Kent IMO
Peggy Paul
Amy M. Kerlin
Roy and Lori Kern
Debbie Kerns
Dr. Gloria Kerr IHO Trevor Runco



Pittsburgh CLO Donors

Ronald and Sandra Kiersarsky
Debra and Jack King
MaryAnn & Bill King
James R. Kirsch IMO Audrey K. Kirsch
Peg Klein
Gary Kline IHO Kiesha Lalama
JP Kline
Diane Knechtel
Christy Kobus
Cynthia Kolsun
Lisa Koperek IHO Audrey Ann Koperek
Jan Korenich
Sue and Bernie Kortz IMO
H. Virginia Kortz
John & Phyllis Kosar
Cristine Kostiuik
Maria Kovacs
Anne Abrashoff Kowatch
Lou M. Kramer, Jr.
Shawn and Judith Kramer
Robert and Sharon Kramm
Mac and Eileen Kravitz
Gretchen Kreizenbeck, MD
James and Elizabeth Krisher
William and Judith Kristan
Ms. Joni Johnson Kristo
Michelle Kruppa IMO Tom Kruppa
Mr. and Mrs. Morris Kubitz
Pat and John Kuhlman
Bob Kunkle IMO Jonathan Coffman
Kathy J. Kunschner IMO
Alan J. Kunschner
Elaine Kurtanich
Margaret and Dan Lackey
Kathleen Lamb
Linda Lane IMO my mother,
Gloria Bowman
Mark and Kristen Lane IMO
Walter Blenko
Sue H. Langmyer
Mr. & Mrs. Irving J. Latterman
Jeff and Amanda Laubenthal IMO
Ronald Yant
Stephen & Gretchen Lawler
P. Jon Lazorchak and F. Drew Halechko
Sandra K. Leichliter
Neil and Sharon LeJeune
Hazel Carr Leroy
Jason and Julie Lerro
Nancyann Letterio
C.J. Levine
Tracy Lilly IHO Jean C. Lilly
Linda Liotus IMO Walter Blenko
Jerry Lippiatt
Sanford and Susan Littwin
Jill M. Livingston
Jeff and Rachel Lizik
James and Carol Locher
Paul and Janet Long
Richard and Jane Long
Angela J. Longo
Dr. Jae Luck
Ronald & Christine Lunardi
Michael J. Lynch
Ted and JoAnn Lyon
Peter Machi
Jeffrey Mack
Mr. & Mrs. Robert Madar
Joanne Madden
Robert & Dow Malnati
Marianne Maloney
Patricia Manni
Janet K. Manuel
Damon and Jacqueline Manz
Joseph and LaRene Manz
William Gedman and Fred Maradei
Dr. Gregory Markantone
Elizabeth Marshall
Veronica M. Martello
Mr. and Mrs. Carl Maskiewicz

Michael and Cynthia Mason
Nancy Mathews
Violet C. Matteo
Sandy and Robert Matthews
Paul D. Matty IMO Walter Blenko
Mrs. Patti Matty Blenko IMO
Walter Blenko
Jenny and Roger Matz, IMO
Gregory Matz, our son
David Maxwell
Larry and Michaelene McCahan
Ms. Sharon L. McCarl
Jacquelin A. McCauley
Dr. and Mrs. Lee H. McCormick
Bernice McCort IMO Robert McCort
Ken and Pam McCrory IHO
Helen Hanna Casey
Ben and Danielle Niebel
Melissa M. McDonough
Skip McGreevy IMO Teresa Campayno
Susan McGuinn
Robert McKee
Tim and Susan McKee IMO
Walter Blenko
Annie and Jim KcKelvey
Paul and Melissa McLane
Lisa McManus
Mr. and Mrs. Daniel Meier and Family
Kenneth and Tracy Melani
Dave Givens and Stephen Mellett
Gerald and Sherry Mellinger
Dan and Susan Metelsky
Bernadette Meyers
William Meyers IMO
Mr. and Mrs. Eugene Zorn
John and Kathy Miehle
Joseph and Gina Milcoff
Robert and Amber Miles
Barbara W. Miller
David and Tami Miller
Laurie Miller
DJ and Val Miller
John A. Mills, III
John and Carol Mock
George Momyer
Sally Montgomery
Dr. and Mrs. James D. Moore
Harry and Nancy Moore
Lee Morehouse
George W. Morgan
Joan Moss
Brinton Motheral
Richard S. Mowl, Jr.
Jim and Deborah Muders IMO
Tony Wieckowski
Dr. John A. Mueller
Robert & Diane Murphy
Tom and Audrey Yost
Tom and Christine Namey
Mr. and Mrs. Robert Napoli
Victor Nardini
Charlene and Stephen Nass
Chris Nath
Patricia Neiderhauser
Robert and Suzanne Newpher
Captain Boswell & E. Dallas
William Noel
Michele and Zachary Norwood
Mrs. Audrey Novak
Matthew Nowick
Dan and Lisa Nydick
Tracey Nypaver IMO Joseph and
Laverne Fisher
Alice Oakes
Joann Ostheim
William and Audia Otto
Denis Palcic
The Frank and Terri Palumbo Family IMO
Maria Caruso
William Paoleschi

Charles and Betty Paoletti
Dr. Stacy Paporone
Rebecca Parker IMO Kathleen Parker
Chris and Diana Patella
Mr. Brian Pauchnik
Jo-Ann J. Paulenda
Marlene G. Paulick IMO Agnes and
Nicholas Gamer
Ms. Lynley Pavkovich
Kathy & John Pechunka
Linda J. Pelkofer
Lisa and Max Perrache
Vincent Petrocelli IMO
Carole L. Petrocelli
Michael and Hedy Pflug
Kelly and Steve Petropoulos
John Pinto
Stephen and Gerry Piskurich
Mr. & Mrs. Donald J. Platt
Cindy & John Pokora IMO Lil Sciuilli
Josh Polan IMO Jack and Elna Mounts
Kathy Jo Pollack
Duane and Bernadette Ponko, CPA
Pool Family
Samuel and Lisa Popovich IHO Nicholas
Popovich, New Horizons Student
Susan Powell
Carmen Prati-Miller and Sharon DaRe
Barry B. Premoshis
David and Sharon Price
Barbara Provenzano
Cynthia and Charles Prucnal
James A. Puchary, Jr.
Lauren Purcell
Paula M. Puskaric
Matt and Kris Puskarich
Bridget Quinlan
Emily Rabbitt
Francis and Emily Raitano
Dave and Meg Rauth
Kathleen A. Welsh
Keith and Susan Reed
Joshua and Brielle Reicks
Pam Reiger and John Emry
Donna Repka IMO Michael Carasella
Edward M. Reppa, Jr.
June Reynolds
Randy and Linda Reynolds
Mr. & Mrs. Frank J. Ricco, Jr.
Martha Ringler
Lisa Ritsky-Lamb IMO
Mary Kronenwetter
Ben Ritter
Liz Roberts
Mr. and Mrs. Keith A. Roeper
Carol and Rena Fisher
Diane and Al Rose
Mr. and Mrs. Byron Rosener
Carol Rosenthal
Marilee Rousseau
Don & Mary Rugh
Donald and Elizabeth Rush
Lori Ann Rushie
Linda and Bill Rust
Jeffrey and Susan Rutledge
Sharon Ryave Brody IMO Gail Ryave,
Always missing our loving Bubbie
Steve and Amy Sabo
Frank and Denise Salopek
Kona and Lola
Frederic Sargent
Mark Scappe
Helen Schaefers
Martha M. Schaller
Bob Scheible
Benjamin L. Schellhase
Mr. and Mrs. Daniel C. Schetley
Lynne Schiller
John C. Schlotterer
Natalia Schmid



Pittsburgh CLO Donors

Karen Schmidt and Knepper Press IMO
Ellen Granger
Scott and Jennifer Schmidt IHO
CLO Academy
Ellen and James Schnebel
Edward R. Schneider
Nadine A. Schrage IMO Walter E. Schrage
Don & Nancy Schratz
Barbara L. Schumacher
Emily Schwartz
Allen Schwenk
Jim and Sheree Sciarretta
Vince & Barbara Senatore
Tina M. Senules
Victoria and David Serafini
Pauline Seranko
Rick and Robin Shaffer
Mabel J. Shaner
Paul L. Shay, MD & Diana K. Lemley, MD
Taitia Shelow IMO Walter Blenko
Madalaine T. Shigle IMO
Therese "Grammy" Sciulli
Ron and Fran Shirey
Vincent J. Siciliano IMO John A. Siciliano
Rhoda Sikov
Timothy Silbaugh
Stephen A. Silverman
Mr. and Mrs. G. David Sivak
Jacob and Rula Skezas
Walter and Gayle Sklarsky IMO
Clara Sklarsky and Sandra Cessna
Beth Slagle IMO Walter Blenko
Bob and Chris Slodoba
Mike, Beth, & Sarah Smith
Charles and Ruth Smith
Joan Snyder IMO Elvira and Angie
Rosa Snyder-Boyd & Ken Ofstager
Bette Soisson IMO Betty McConnell
Marla Somova
Susan Sorbo
Meghan Speer
Daniela Spitzer
Bernadine M. Srocki
Amy and Mark Stabingas
Mr. & Mrs. Marlis Stacy
Michele Stanchina
Marguerite O. Standish
Jennifer Stanton IHO Mary Donaldson
Bob and Judy Stechly IHO
the Stechly Grandchildren
Carol M. Stein
Joseph and Ami Steinmetz IMO
Walter Blenko
Melissa Stephanou
Rona & Gary Sterling
Jenny and Kelly Stewart
Mr. & Mrs. Stewart
Christine and Timothy Stives
Vickie Stock
Mr. George Stowell and Mr. Dennis Panek
Kathy and Paul Sutcliffe
Steven Szymkiewicz
Janet L. Templer IMO Carol R. McAuley
Kelly Thomas
Mr. and Mrs. Robert W. Thomas
Russ and Barbara Thomas
Richard and Carol Thompson
Dale Thomson
Mr. and Mrs. Willard J. Tillotson, Jr.
Karen F. Tissue IHO Lillian Cisek
Anna Tomko
Barbara Trachtenberg
Patrick J. Tray
George and Pia Trew
Joseph and Patricia Trichtinger
Nancy and Gary Tuckfelt IMO
Jay and Renee Minsky
Catherine Turner
Penny Tzortzis
Keith and Carol Unitas

Maureen Uphues
Regis and Nancy Urban
Kim Ivory Vail
Ellen Vegh
Mr. and Mrs. Anthony L. Venci IHO
Mr. and Mrs. Douglas Naylor, Jr.
Matt and Anne Veres IHO all the
amazing performers
Mary Beth Veri
Robert L. Vigue Jr
Nancy Vrabel
Kevin and Patricia Vunak
Yvonne and Jack Wagner
Robb Waid
Deborah Walker and Paul Floreancig
Donna Lee Walker
Ernest and Janet Walker
Michael and Peggy Wallace
Leslie James Ward
Joanne Marusic Watterson
Mr. and Mrs. R. Watton
Matt and Noelle Davis
Benny and Katherine Weksler
Ann Welsh Slavish
Mary Werner
Mary Lee Wetmore
Stephen Wetmore
Henry and Rosemarie Wetzel
Peggy C. Whitehurst
Pete and Jean Wicks
Jason Wiley
Nancy and Will Willems
Travis and Nikki Viglione Williams
Seth and Allison Wilson
Shirley Wilson
Louanne Wincko
Mr. and Mrs. John J. Wink
Mr. David E. Winklmann
Hannah Winslow and William Winslow
Dr. Sharon Wirtz
Leslie Wojdowski IMO Wanda M. Carver
Michael Worgul
Ben Wren
Katie Yost
Carla and James Young
Joan Zacharias
Dr. Karen and Mr. Stan Zapadka
Randy and Jennifer Zelen
Michael and Vickie Zernich
Paul F. Zibritoski
Tash Zukowski
Dr. Paulina F. Zunino
Susan Stanish Zurawsky

Raise the Curtain & 75th Anniversary Campaign Supporters

The Michael J. Kara Family
Billy & Sandy Lambert
Pennsylvania Department of Community
and Economic Development
Allegheny Regional Asset District
Stephen and Helen Hanna Casey -
Howard Hanna Real Estate Services
HRH Foundation
Joseph and Kathy Guyaux
Van Kaplan and Mary Jane Brennan
Robert C. McCartney
PNC
Dollar Bank
Dan and Debby Booker
Highmark
The Henry L. Hillman Foundation
Massey Charitable Trust
Mark and Diane Minnaugh

MSA Safety
UPMC and UPMC Health Plan

Bozzone Family Foundation
Heffren Tillotson, Inc.
Edward T. and Suzanne F. Karlovich
Cate Linn
Mr. and Mrs. Alexander Overstrom
Reed Smith

Aon Consulting
Giant Eagle, Inc.
Leslie Hyde and Lou Santora
Tom and Christ Kobus
Koppers, Inc.
James and Sharon Rohr
Tri State Capital Bank

Joann Clark Davis
Annie and Gus Engel
Ernst & Young
Federated Hermes
Heinz Endowments
Ramsey & Mike Lyons
Pennsylvania Council on the Arts
Pittsburgh Steelers
Glenn and Stephanie Todd

9rooftops
Peter and Lisa Germain
Mark and Catherine Loevner
James and Lisa McQuade
Barry and Arlene Sokolow
System One
Dennis and Diane Unkovic

Anonymous
John and Doreen Abbaticco
Michael J. Accetta
Becca Addison
Pritam and Binu Advani
John and Diane Aikens
Valerie Alstadt
Lily Altman
Kristen Anderson
William P. Anderson
Mr. & Mrs. Richard F. Andracki
Jen Bohland-Anhalt & Joshua Anhalt
James R. Atwell
Kristin Bair
Heidi G. Balas
Marlynn Baldo
Colleen Baldwin
Evelyn Balla
Kathryn and James Bann
Craig and Diane Barton
Jenny and John Becker
Ms. Tammy Ann Beier IHO Martha Beier
Joyce Bender
Paul G. Benedum, Jr.
Daniel Berger and Sandra El-Hachem
Mr. & Mrs. J. Bianchin, III
Esther Bearman
Regis Binder
Nancy Bishop IMO Maureen Bishop
Thomas Black
Raymond Blackwell
Yvonne R. Blair
Joan Margaret Blasinsky
Thomas Blazina
Michael and Carol Bleier
Paul E. Block IMO Don Arnheim
Stephen and Dana Bloomburg
Sharon N. Bogarad & Ron Kinney
Pamela Bolkovac
Judith Bookhamer
Catherine A. Bowser
Kathleen Boykin
James Bracaglia
Rebecca Brandl



Pittsburgh CLO Donors

Scott Bravold and Lynda Davidson
Margaret and Norman Brawdy
Jim and Kristin Brennan
David and Karen Brienza
The Brough Family
Jeremiah Brown
Susan Brown
Michele Buraczewski
Kwame V. Burroughs
Karley Busato
O Calejesan
Christine Campbell
Richard W. Campbell
Mary Cappetta
Ellen Carabin
Michael Carelli
Wayne Carringer
Margaret Caskey
Barbara Castellion
Michelle Chapman
Heather M. Chappars
Marie Charles IMO Carolyn Tady
Ronald and Judy Charlton
Sandra Chieffe
Ken and Kay Christ
Tom and Dale Christopher
William and Jennifer Chufo
Frank and Theresa Cicci
Stephanie and Preston Ciranni
Robert Clair
Edward Cleis
Carolyn Clevenger
Thomas M. Cloherty
Susan Columbus
Estelle Comay and Bruce Rabin
Elizabeth Ann Connor
Kathy A. Conrad
Justine Conwell
William and Joyce Cooper
Dr. and Mrs. Joseph G. Coroso
Leslie Covall
Linda J. Craig
Aldo Crisante
Charles Croskey
Lance Crow
Christopher Cunningham
Bill and Sue Cutri
Cynthia D'Agostino and
Charles Jefferson
Catherine M. Daily IMO Hazel P. Daily
Linda Dallies
Marie Daniels
George and Ada Davidson
Jerry and Mimi Davis
Dean and Mary Kay Dayner
Stacy and Christopher Dee
Thomas Deetz
Michael DeKlavan
Dr & Mrs. Paul Del Bianco
Sharon Deluca
Donald Delvecchio
Shana Deo
Barbara Dillon

Ed & Ellen Dillon
Danette DiMarco and Harold Domville
Jim and Karen Dionise
Joe & Karen DiVito
Ann Dixon
Mr. & Mrs. Frank C. Dlubak
James and Theresa Doerfler
Steven Doerfler
Kathleen Donnelly
John Dreistadt
Paul S. Drost
John & Marge Duff
Richard and Sandy Dunkel
Betty and René Duquesnoy
Marylou Durr
Jodie Eckenrod
Melinda and James Edwards
Jeff Eiben
David & Carol Eibling
Marcie L. Emory
Kevin and Leslie Engelmeier
Jim & Jan Engleson
Becky Erdner
Christopher Evans
Thomas Eversmann
Grace Faber
Frank and Lisa Flacione
Michelle Farabaugh
Suzanne Faris
Diamond Wire Spring Co.
Elias Fedele
Theresa B. Fedio
Jane Feightner
Hannah Fernau
Direct Finance, Inc.
Mr. & Mrs. David F. Figgins
Sarah Finney
Eileen T. Fiorina
Celeste Flaherty-Thomas
Mark Fleischer and Holly Breuer
Mr. and Mrs. Willard J. Tillotson, Jr.
Mr. & Mrs. Robert L. Fletcher
Dr. Edward L. Foley
Karen Ford
Edward and Marilyn Fortwangler
Rodney and Marion Francis
Katherine and John Freed
Robert and Jennifer Freeman
Friedlander Family
John Frisk
Richard and Linda Froehlich
Adelaide Fullen
Jill Fullen
Debbie I. Furey
Carolyn Gabor
Carrie Gagliano
Richard and Jessica Galardini
Katie Gallagher
Judge & Donna Gallo IMO Violet C. Gallo
Annette D. Ganassi
John and Sandy Gandolfi
Judy Garcia
Mr. and Mrs. Gerard Gastonguay

Anne Marie Gebhardt
Joy Cone Company
Gus and Penny Georgiadis
William D. and Margaret Sawyer Christ
Nancy & Ron Giallonardo
Mr. and Mrs. Carl Gilbert
Beverly J. Gilson
Jason M. Gloeckl
Barbara J. Goodman
Thomas & Catherine Gothie
Melissa Grace
Anonymous IMO Marie Graham
Cyndy Graves
Lester Gray
Mary Adele Greek
Rev. Dr. James R. Gretz
Joann and Anthony Grieco
Carol Sikov Gross
Margaret Gruzinski
Christopher Guerriero
Natalie Guiler
Marcia A. Guzzi IMO Louis A. Guzzi
Gretchen & Jim Haggerty
Dianne Hair
Arnold Hamovitz
Ingeborg Hamovitz
Denise Hampson
Sue Haney
Lisa Harris
Jessica L. Hatherill
Ellen Hayduck
Mr. and Mrs. Paul I. Heil
Dustin Helm
Lisa Helm
Erick Henderson
Sarah Henderson
Francis J. Hensler
Richard and Ruth Ann Hess
Rebecca K. Heyns
Jean Hilpert
Janice L. Hixson
Karen Hoang
Amy and Paul Hoback
Judy E. Hodgson
Garnet Hoffman
G. Daniel and Lisa Hommel
George Hoover
Rev. Paul C. Householder
Edward Howe
Dr. Starr L. Hull
Ray & Bonnie Humbertson
Charles Hunnell
Terence V. Hunt
Charity J. Imbrie
Jeff Irwin, D.D.S.
Joann G. Jakubec
Jan and Ken Janowitz
Tom Wenston and Harry Java, Jr.
Cynthia Johnson
Tom and Cathie Johnson
Dr. & Mrs. Robert T. Jones, Jr.
Ms. Sherdina Jones
Mr. & Mrs. John W. Joy

The engagement of our distinguished Lead Actor for *A BROADWAY MUSICAL CELEBRATION*,
Norm Lewis, is underwritten through the generous support of

Joe and Kathy Guyaux



NEXT GENERATION
CAMPAIGN



Pittsburgh CLO Donors

Shawn and Elizabeth Kaciubij
Pat Kaczmarek
William B. Kania
Carolyn Keefer
Rebecca J. Keevican
Mary Kellam IMO Robert C. Milsom
Roy and Lori Kern
Arthur Kerr
Dr. Gloria Kerr IHO Trevor Runco
Gary and Betty Kessler
Kimberly Kifer
Susan Kijowski
Kristi Kindelberger
Patrick and Marcia Dunphy
MaryAnn & Bill King
Peg Klein
Mark Klonicke
Greg and Debbie Knowles
Christy Kobus
Angela M. Kokovich
Janet A. Korenich
Rich and Leslie Korieth
Cristine Kostiuk
Janet Kramer
Robert and Sharon Kramm
Stephanie Krick
William and Judith Kristan
Jack Kroh
John and MaryAdele Krolkowski
Michelle Kruppa IMO Tom Kruppa
Elsie T. Kuba
James Kuklish
Margaret and Dan Lackey
Kathleen Lamb
Colleen Lankford
Irene Lanza
Debra A. Larison
Sandra Latini
Alan Latta
Joan M. Latta
Mr. & Mrs. Irving J. Latterman
Stephen & Gretchen Lawler
Lucia Lazzara-Goodrich
Marco Leal
The Kubica Family
Toni Lenart
Jeffrey E. Lentz
Darren and Linda Leonard
Lisa Leonhard
Julie Leslie
Nancyann Letterio
Richard and Leslie Levine
Rita Levine
Linda Liotus IMO Walter Blenko
Nicholas and Anne Liparulo
Richard and Lynn Lipovich
Dan and Janine Littlefield
Jill M. Livingston
James and Carol Locher
Bill & Peggy Lonett
David and Cheryl Longstreet IMO
Alva Fleming
Kate Loy
Barbara Lustig
Peter Luxton
Frances Lyman
Gary Lyman
Michael J. Lynch
Peter Machi
Renee Maddex
James and Sue Ann Maqoc
Richard Mallary
Gertrude Mallet
Kay Manecke
Susan Mann
Janet K. Manuel
Richard Marciniak
Dr. Gregory Markantone
Beth Markl
Norman and Veronica Martello

John & Cathy Mary
Dave Maxwell
Amanda Mayer
J. and Hope McCague
Ms. Sharon L. McCarl
Jacquelin A. McCauley
John McClymonds
Susan McCoy
Michael and Wanda McGarry
Mark and Patricia McGinley
J. Barbara McKelway
Richard and Nancy McKnight
Margaret A. McLean and Stanley Yorsz
William Medica
Kenneth and Tracy Melani
Candy Merando
Janet Mickey
J.C. Migliaccio
Joseph and Carolyn Mihalevic
John and Carol Mock
George Momyer
Harold and Leslie Reidenbaugh IHO
Janet Montgomery
Dr. and Mrs. James D. Moore
Thomas and Amy Moore
Lisa Moretti
George Morgan
Kathy Jo Morgan
Carroll and David Morrison
Thomas and Marcia Morton
Benjamin Moser
Ralph Mostoller
Miriam & Todd Moules
Richard S. Mowl, Jr.
Bertin Murhammer
Robert & Diane Murphy
Gail E. Nagy
Victor Nardini
Brian Nath
Scott and Jennifer Neill
Keith and Tracey Nichols
Cathy and Herbert Niebel
William Nimick
William Noel
Michele and Zachary Norwood
Douglas R. Nowicki
Judith D. Nudi
Michele L. Null
Dan and Lisa Nydick
Alice Oakes
Mr. and Mrs. James R. Okonak
David and Johanna O'Loughlin
Joann Ostheim
Christina P. O'Toole
Denis Palcic
Paul & Paula Palmer IHO Charlie and
Pat Gray
Ed & Lisa Palombo
Liron and Heidi Pantanowitz
Maria and Rocco Panucci
Louis J. Panza
Michael & Cathy Panza
Wendy Pardee
Joanne and Christopher Parry
Henrietta Patellos
Carolyn Patterson
Ms. Lynley Pavkovich
Lisa and Max Perrache
William J. Perrone
Jean Marie Perry
Lisa and William Perry
Amy C. Peters
Vincent Petrocelli IMO Carole L.
Petrocelli
Cynthia Ann Phillips
John Phillips & Joan Russell
Kelly and Steve Photopoulos
June Pickett Dowdy
Robert and Christine Pietrandrea
John Pinto

Stephen and Gerry Piskurich
Cindy & John Pokora IMO Lil Sciulli
The Pollon Family
Duane and Bernadette Ponco, CPA
Rebecca Pool IMO Judith Busch
Hamilton
Carole Popchok
Euphemia Powell
Terry Pronko
Paula M. Puskaric
Erin Boyts Quinn
Robert P. Randall
Robin Randall
Samuel Rauhala
Christopher and Mary Rawson
Kathleen A. Welsh
Pam Reiger and John Emry
Britt Reints
Donna Repka
George F. Reuss
Kimberlee Rhule
Martha Ringler
Roxanne L. Rinier
Marcy Robertson
Susie and Jerry Robinson
Michael Rodites
Carol and Rena Fisher
Todd and Andrea Rooney
Mr. and Mrs. Byron Rosener
Carol Rosenthal
Shenessa Rossetti
Conrad & Gerri Rossetti
Sarah Rosswog
Patricia Rote
James and Shannon Rowland
Karlyn Rupert
Bonnie Rydell
Frank and Denise Salopek
Susan Sargent
Thomas and Beverly Scaff
Timothy W. Scaife
Hon. Eugene F. & Mrs. Sheila Scanlon
William Schaefer
Helen Schaefers
Paul Schamer
Bob Scheible
Daniel and Grace Schetley
Clyde Schertz
Penny Schnarrs and Melissa Tavarez MD
Edward R. Schneider
Nadine A. Schrage IMO Walter E. Schrage
Don & Nancy Schratz
Michael Schrecengost
Debbie Schuessler
Carl Schultz
Jeffrey Schutzzeus and Carl Ward
Mary J. Seghi
Robert E. Septak
Rick and Robin Shaffer
Rebecca H. Shavel
Bob and Lori Shelow
Gail Shumway
Damon and Judith Shutak
Rhoda Sikov
Deborah M. Simak
Luke and Allison Sizemore
Walter and Gayle Sklarsky IMO
Clara Sklarsky and Sandra Cessna
Perri Slosky
Bert & Linda Smith
Craig A. Smith
Jeanne Smith
Leann Smith
Barbara R. Snyder
Denise Sokos
The Somervilles
Tamara Sotlar
Gina M. Sparvero
Meghan Speer
Rob and Jane Spicher



Pittsburgh CLO Donors

Marlis and Peggy Stacy
Kimberly Stanek
Jennifer Stanton
Randi L. Starr
Walter L. Startzel IHO Van Kaplan
Bob and Judy Stechly IHO the Stechly
Grandchildren
Mark and Tammy Steele
Robert and Gail Stevens
Tim and Christine Stives
Jody Stockkill
James Stotsky
Janet E. Stout
Mr. George Stowell and Mr. Dennis Panek
Christopher Strager
Katherine Straszheim
Richard and Linda Stringert
Charles & Patricia Sturm
David & Theresa Suehr
Kathy and Paul Sutcliffe
Melissa and Charles Tea
Elizabeth and Rick Teaff
Yvonne Tedder
Mary Ann Templeton
Betsy and Tom Teti
Robert Thoma
Dick and Jana Thomas
Mr. and Mrs. Robert W. Thomas
Richard and Carol Thompson
Dale Thomson
Carol H. Tillotson IMO Anne C. and
Arthur R. Hefren
Joann L. Tissue
Mr. & Mrs. Regis Tomsey
Elizabeth Toole

Barbara Trachtenberg
Elizabeth Trocchio IMO Zoe Belle Snyder
Nancy and Gary Tuckfelt IMO
Jay and Renee Minsky
Catherine Turner
Charles and Sue Turner
Rhonda L. Turner
Mr. and Mrs. Tom Ultsch
Mr. & Mrs. David Van Horn
Jane A. Vaselenak
Michael and Jane Vennum
Matt and Anne Veres IHO all the amazing
performers
Mr. & Mrs. Richard J. Voller
Rebecca Dewey
Sally Wade
Yvonne and Jack Wagner
Reverend Thomas A. Wagner
Deborah Walker and Paul Floreancig
Michael and Lisa Walsh
Douglas & Kelly Waltman
Mr. and Mrs. Thomas Wash
Kaitlyn Weber
Ruth Webster
Vanek Financial Solutions
Mary Jo Weinau
Leslie Weinstein
Jodi L. Welch
Mr. & Mrs. W. Robert Wells
Mr. & Mrs. Richard L. White
Stephanie & Mia White
Laura Wiggins
Julie Wiles
Nancy and Will Willems
Travis and Nikki Viglione Williams

J. Dennis Wilson
Tom Wilson
Louanne Wincko IMO
Roland S. Catarinella
Mr. and Mrs. John J. Wink
Randy and Patti Wynkoop
Tom Wyse, Jr. and Robert A. Neft
Kathleen Yarzebinski
Robert Yates
Dana and Sarah Yealy
Joan Zacharias
Robin Zacherl
George and Dena Zaimes
Dr. and Mrs. Victor Zakowski IMO Walter
Blenko
Ronald and Deborah Zanetti
Dr. Audrey Zerkovic IMO
Anna & Nicholas Zerkovic
Tim & Linda Zimmerman
Michael & Jackie Zivello
Yarone and Tiffany Zober

Pittsburgh CLO thanks the Ambassadors and Guild for their generous support of the CLO Performance Season and CLO's Education and Community Engagement Programs.

IMO: In Memory Of

IHO: In Honor Of

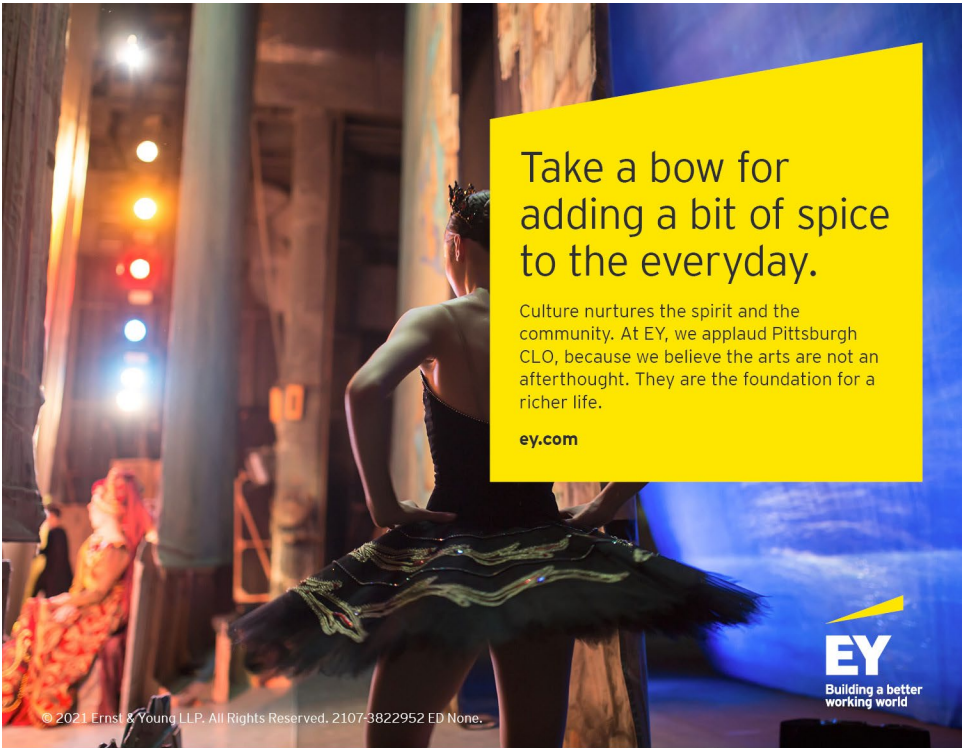
Listing is complete as of 6/30/21.

To join the Pittsburgh CLO donor family, and for information on our 2021 donor benefits, [click here to visit our website.](#)

THE HEINZ ENDOWMENTS

HOWARD HEINZ ENDOWMENT

VIRA I. HEINZ ENDOWMENT



Take a bow for
adding a bit of spice
to the everyday.

Culture nurtures the spirit and the community. At EY, we applaud Pittsburgh CLO, because we believe the arts are not an afterthought. They are the foundation for a richer life.

ey.com



© 2021 Ernst & Young LLP. All Rights Reserved. 2107-3822952 ED None.

**GIANT
EAGLE**

®



An Independent Licensee of the Blue Cross and Blue Shield Association

POINT PARK
UNIVERSITY





Pittsburgh CLO thanks

Joan Clark Davis

for their generous support of the
Broadway Musical Celebration Gala.

Pittsburgh CLO thanks

**Ramsey & Mike
Lyons**

for their generous support of the
Broadway Musical Celebration Gala.



Pittsburgh CLO Staff

Van Kaplan, CEO

Mark Fleischer, Executive Producer

ADMINISTRATION

Becca Ackner *PR/Marketing Manager*
 Stephanie Barletto *Graphic/Web Designer*
 Erin Barnett *Customer Service Coordinator*
 Laura Barry *Manager of Individual Giving*
 Mary Jane Brennan *Contributing Writer*
 Julie Carlino *Manager of Patron Services*
 Sharon Fallon *Contract Management*
 Wynne Fedele *Director of Development*
 Nick Franczak *Assistant Graphic Designer*
 Sidney Franczak *Communications Coordinator*
 Anna Gergerich *Group Sales Coordinator/
 Patron Services Associate*
 Melissa Goodfriend *Development Coordinator*
 Emmaline Hall *Donor Relations Coordinator*
 Kiesha Lalama *Director of Community
 Engagement & Strategic Initiatives*
 Angela Langill *Director of Finance & Administration*
 Kuei-O Lin *Accountant*
 Tammy Lin *Assistant Manager of Patron Services*
 Kaitlyn Loy *Manager of Institutional Giving*
 Billy Mason *Producing Associate*
 Richard McBride *Special Events Coordinator*
 Savannah Merrill *Company Management*
 Olivia O'Connor *Manager of New Work Development*
 Halle Polechko *Patron Services Associate*
 Saige Smith *Patron Services Associate*
 Noah Zaken *Special Events and
 Volunteer Coordinator*

CLO ACADEMY

Michael J. Cerchiaro *Education Programs Manager*
 Patty Maloney *Principal*
 Jim Scriven *Associate Education Director*

CONSTRUCTION CENTER

Michael Bannias *Key Carpenter*
 Cameron Edkins *Journeyman*
 Carson Edkins *Shop Assistant*
 John R. Edkins *Director of Production/
 Technical Supervisor*
 Michele Sullivan *Office Manager*

PRODUCTION

Matthew Abate *Head Rigger*
 Heather Anklely* *Production Stage Manager*
 Debbie Becker *Stitcher*
 Karl Bontrager *Electrics Programmer*
 Tim Brady* *Assistant Stage Manager*
 Greg Brooks *Assistant Sound*
 Catie Brown *Rehearsal Pianist*

Daniel Callery *Assistant Carpenter*
 Monty Carlo *A/V Technician*
 Jay Chapman *Production Assistant*
 Jason Coll *Contributing Writer*
 Emma Cordray *Production Assistant*
 Matthew Couvillon *Associate Choreographer*
 Matthew Croft *Orchestra Reduction*
 Chris Cronin *Video System*
 James Cunningham *Music Director*
 Jeffery Edkins *Deck Sound*
 Jordan Edkins *Head Carpenter*
 Chris Evans *Sound Designer*
 Graham Evans *Production Assistant*
 Julian Evans *Pre-Show Sound*
 Mimi Exler *Assistant Props*
 Joshua Fried *Production Assistant*
 Andrew Giffin *Lighting Designer/Production Design*
 Anna Hanson *Production Assistant*
 Lara Hayhurst *Lead COVID Compliance Officer*
 Kelly Haywood* *Assistant Stage Manager*
 Katheryn Hess *Production Assistant*
 Kevin Hogan *Electrics Data Tech*
 Andrew Honarvar *Video Lead*
 Jason Kantrowitz *Pre-Show Creative Producer*
 Daniel Kendgia *Head Electrician*
 Dontee Kiehn *Directing/Choreography Consultant*
 Travis Klingler *Hair and Makeup Supervisor*
 Baayork Lee *Director/Choreographer*
 Brandon Martin *Production Assistant*
 Emmy Masteller *Production Assistant*
 Nick Mitchell *House Manager*
 Heidi Murr *Youth Performer Supervisor/
 Production Assistant*
 Matthias Neckermann *Media Server Operator*
 Robert Neumeyer *Music Arranger*
 Todd Nonn *FOH Electrician*
 Frank Ostrowski *Musical Coordinator*
 Nicole Pagano *Hair Designer*
 Greg Peeler *LED Tech*
 Brad Peterson *Pre-Show Video*
 Alicia Reece *Assistant Production Manager*
 Dominic Sack *Sound System Designer*
 Allan Snyder *COVID Compliance Officer*
 Joe Spinogatti *Video Designer*
 Kathie Sullivan *Wardrobe Supervisor*
 Mark Susany *Production Manager*
 Joshua Tkaczuk *Assistant Lighting Designer/
 Associate Production Designer*
 Tru Verret-Fleming *COVID Compliance Officer*
 Jeramie Welch *Production Assistant*
 Edward West *Head Property*

Special thanks to Heinz Field and the Pittsburgh Steelers

**Members of Actors' Equity Association, the union of professional actors and stage managers in the United States*



The Director/Choreographer is a member of the Stage Directors and Choreographers Society, a national theatrical labor union.



United Scenic Artists represents the designers and scenic painters for the American Theatre.



Backstage and Front of the House Employees are represented by the International Alliance of Theatrical Stage Employees (or I.A.T.S.E.).



The actors and stage managers employed in this production are members of Actors' Equity Association, the union of professional actors and stage managers in the United States.



The Musicians, Conductors, Music Preparation Personnel and Librarians employed in this production are members of the American Federation of Musicians of the United States and Canada.



pennsylvania
COUNCIL ON THE ARTS

Pittsburgh CLO receives state arts funding support through a grant from the Pennsylvania Council on the Arts, a state agency funded by the Commonwealth of Pennsylvania and the National Endowment for the Arts, a federal agency.



The Allegheny Regional Asset District, a county agency created to support and finance regional assets, including libraries, parks, cultural groups, sports and civic facilities, and to distribute tax relief to the 128 municipalities of Allegheny County.

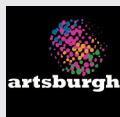


National Endowment for the Arts
arts.gov

The National Endowment for the Arts is a public agency dedicated to supporting excellence in the arts, both new and established; bringing the arts to all Americans; and providing leadership in arts education. Established by Congress in 1965 as an independent agency of the federal government, the Endowment is the nation's largest annual funder of the arts, bringing great art to all 50 states, including rural areas, inner cities, and military bases.

NAMT
NATIONAL ALLIANCE FOR MUSICAL THEATRE

THE BROADWAY LEAGUE



Thank You

The CLO Gallery of Heroes in-school program and *Beyond the Moon* are sponsored by The Massey Charitable Trust, The Pittsburgh Foundation, Allegheny Foundation, Healthcare Trust of America, Inc., Cooper-Siegel Family Foundation, Highmark Blue Cross Blue Shield, the Laurel Foundation and UPMC.

The Gene Kelly Awards are sponsored by The Michael J. Kara Family, HRH Foundation, Deloitte, the Gismondi Family Foundation, Highmark Blue Cross Blue Shield, PNC and by the CLO Ambassadors.

CLO New Horizons is made possible in part by UPMC, Highmark Blue Cross Blue Shield, The Pittsburgh Foundation, Allegheny Foundation, Cooper-Siegel Family Foundation, and the Edith L. Trees Charitable Trust.

PNC is the presenting sponsor of Summer Under the Stars.

Three Rivers Entertainment

Mayor William Peduto

Allegheny County Executive Rich Fitzgerald

PriceWaterhouseCoopers

Three Rivers Entertainment

Pittsburgh Symphony Orchestra

ALCO Parking

Howard Hanna Real Estate Services and Helen Hanna Casey

The Jack Buncher Foundation for support of the free tickets for kids program

Sarris Candy

Jared Charbonneau, Whirley-DrinkWorks!

The Omni William Penn is the Official Hotel of Pittsburgh CLO.

Certain video elements courtesy of:

Vidvo.net

Videezy

Forsaken Fotos

Free Motion Graphics

Joel Cervantes Ramirez

The Pittsburgh Cultural Trust