



Pittsburgh
CLO

CELEBRATING MUSICAL THEATER



Disney THE LITTLE
MERMAID

BROADWAY'S UNDER THE SEA SPECTACULAR



The Pittsburgh Civic Light Opera Association

OFFICERS



Joseph C. Guyaux
Chairman of the Board



William M. Lambert
President

Honorary Chairman of the Board
Julie Andrews

Chairman of the Board
Joseph C. Guyaux

President
William M. Lambert

Vice President/CLO Ambassadors
Frederick C. Leech

Vice Presidents/Audit
Timothy K. Zimmerman
Todd C. Moules

Vice Presidents/Budget & Finance
Timothy K. Zimmerman
John C. Williams, Jr.

Vice President/Cabaret Theater
Daniel I. Booker

Vice President/
Construction Center & Facilities
Floyd R. Ganassi

Vice Presidents/Development
Tony Bucci
Mark J. Minnaugh
Ronald L. Violi

Vice Presidents/
Education & Outreach
Christine M. Kobus
Gary R. Truitt

Vice Presidents/Human Resources
Todd C. Moules
Charlene Petrelli

Vice Presidents/
Long Range Planning
Michael E. Bleier
Alvaro Garcia-Tunon

Vice Presidents/Marketing
Michael F. Walsh
Richard S. Hamilton

Vice Presidents/New Works
Development & Funding
John C. Williams, Jr.
Mark J. Minnaugh

Vice Presidents/Nominating
Scott F. Neill
John E. Kosar

Vice Presidents/Production
Helen Hanna Casey
Peter J. Germain

Vice President/Special Events
Laurie M. Mushinsky

Vice Presidents
G. Reynolds Clark
James R. Kane

Secretary
Johanna G. O'Loughlin

Treasurer
Edward T. Karlovich

Executive Director Emeritus
Charles Gray

Corporate Counsel
James M. Doerfler

Chairmen of the Board Emeritus
William J. Copeland
George A. Davidson, Jr.
James E. Rohr

Daniel I. Booker
Louis D. Astorino

Executive Producer
Van Kaplan

DIRECTORS

Neil H. Alexander
Michael E. Bleier
Walter J. Blenko, Jr.
Maryann Boehm
Daniel I. Booker
James M. Brennan
Michael J. Brunner
Tony Bucci
Helen Hanna Casey
G. Reynolds Clark
William J. Copeland
Senator Jay Costa, Jr.
Joyce C. Dailey
George A. Davidson, Jr.
Moira Davison

Stacy Leshock Dee
Eric F. Dickerson
Joseph V. DiVito, Jr.
Jane Dixon
Stephen J. Fedell
Eleanor Schano Feeny
Terri H. Fitzpatrick
Violet Gallo
Floyd R. Ganassi
Alvaro Garcia-Tunon
Peter J. Germain
Joseph C. Guyaux
Richard S. Hamilton
Paul Hennigan
James R. Kane

Edward T. Karlovich
Joseph M. Klaja
Christine M. Kobus
John E. Kosar
Rose Kutsenkow
William M. Lambert
Mark T. Latterner
Frederick C. Leech
Nicholas J. Liparulo
Richard J. Lipovich
T.H. Lyda
Patricia L. Matty
Robert C. McCartney,
Esq.
Timothy P. McNulty

Mark J. Minnaugh
Mildred E. Morrison
Todd C. Moules
Laurie M. Mushinsky
Scott F. Neill
Johanna G. O'Loughlin
Christina P. O'Toole
Charlene Petrelli
Renee D. Piatt
Rita Randall
Matthew V. T. Ray
Eric A. Schaffer
Salvatore M. Sirabella
Arlene Sokolow
Merrill P. Stabile

Joann L. Tissue
The Honorable
Debra Todd
Glenn D. Todd
Gary R. Truitt
Dennis Unkovic
Ronald L. Violi
Carla J. Vrsansky
Michael F. Walsh
Doris Carson Williams
John C. Williams, Jr.
Travis E. Williams
Helen Wylie
Timothy K. Zimmerman

ADVISORY BOARD

George Ator
Joan Bogut
Roland Catarinella
Charles R. Fallon

Scotti Mulert
Rosemarie R. Parse, Ph.D.
Melvin D. Rex

George W. Rooney, Jr.
Howard J. Roughen
Michael W. Stuhldreher

Playlist updated.
Top-rated specialist located.
No sweat.



Get real **Provider Ratings** from real Highmark members, before you decide where to get care. Explore this and other powerful new tools built to save you time and money.

HighmarkHealthTools.com



Highmark Blue Cross Blue Shield is an independent licensee of the Blue Cross and Blue Shield Association. Subject to the terms of your benefit plan.

Joseph C. Guyaux
Senior Vice Chairman



Welcome! We are once again pleased to serve as premier sponsor of the Pittsburgh CLO's PNC Spotlight Series.

The CLO is a Pittsburgh treasure, consistently providing our region with exceptional entertainment. And this season is no different with all-new productions of timeless classics and modern masterpieces that are sure to thrill and delight.

The PNC Spotlight Series performances and other presentations by the CLO serve as integral elements of Pittsburgh's thriving Cultural District, which attracts thousands of visitors each year and helps to define Pittsburgh as the most livable place in America. That is why PNC has established such a long and rewarding relationship with the Civic Light Opera, and it's why we're pleased to continue that relationship for another season.

Thank you for being here and supporting one of the region's rich cultural assets. Enjoy the show.

Sincerely,



Dear Friends,

I am delighted that you've joined us for *Disney's The Little Mermaid*, the new musical based on the Academy Award-winning 1989 Disney film "The Little Mermaid," itself based on the classic children's story first published in 1837 by Hans Christian Andersen. We are proud to be one of a handful of regional theaters selected by Disney to co-produce this show following its 2008 debut on Broadway, where it enjoyed multiple Tony-Award® nominations, including one for Best Score for Alan Menken and lyricists Howard Ashman and Glenn Slater. This is the musical's debut in Pittsburgh!

After three revivals this season, today's production is brand new to us. Why are new musicals important to Pittsburgh CLO? Because part of our mission is to expand the variety of musicals in our producing repertoire that we can one day revive, we are constantly seeking out new ones that we think you would enjoy and that might appeal to new theatergoers, too. Family shows like today's are the hardest to come by; we were similarly fortunate in 2007 when we were able to assist Disney in the launch of the national tour of *Disney's High School Musical*.

We produce new shows in a number of ways: by commissioning artists (most recently through the CLO Cabaret and Gallery of Heroes Series), by co-producing with other theaters, or by working with commercial producers. Given the high cost of producing independently, non-profit theaters like ours have to be increasingly resourceful about developing new shows. We occasionally do so through our membership in a national consortium of regional theaters called the Independent Presenters Network (IPN), which allows us to review opportunities to produce or co-produce new works and national tours of high-profile productions on the condition that we be able to offer these shows to our subscribers. With the IPN, we've been able to bring to you, directly from Broadway, the Pittsburgh premieres of: *Thoroughly Modern Millie*, *Bombay Dreams*, *Spamalot*, *Legally Blonde*, *Curtains*, *The Color Purple*, *9 to 5: The Musical*, *Twyla Tharp's Come Fly Away* and *The Addams Family*. Being on the ground floor of new works can benefit us in many ways, especially when a show proves successful at our box office.

Whether a Pittsburgh CLO production is a time-honored revival, lesser-known gem or occasional new show hot off the press, our goal is the same: to create a musical theater experience that exceeds your expectations.

Thank you for being here.

Enjoy the show!

Van Kaplan
Executive Producer

"Everything you look at can become a fairy tale and you can get a story from everything you touch." – Hans Christian Andersen

“All our dreams can come true, if we
have the courage to pursue them.”

– Walt Disney



MSA
The Safety Company

www.MSAafety.com

Our Mission: That men and women may work in safety and that they, their families and their communities may live in health throughout the world.

MSA North America • 1-800-MSA-2222

July 9 - 21, 2013

PITTSBURGH CLO
VAN KAPLAN, Executive Producer
Presents

Disney
THE LITTLE MERMAID

Music by
ALAN MENKEN

Lyrics by
**HOWARD ASHMAN
& GLENN SLATER**

Book by
DOUG WRIGHT

Based on the Hans Christian Andersen story and the Disney film produced by
Howard Ashman & John Musker and written & directed by John Musker & Ron Clements

Starring

NICK ADAMS	MATT ALLEN	SEAN PATRICK DOYLE	JESSICA GROVÉ
SCOTT LEIENDECKER	LIZ McCARTNEY	ALAN MINGO, JR.	
CHRISTIAN PROBST	TIMOTHY SHEW	EDWARD WATTS	RON WISNISKI

Scenic Design
KENNETH FOY

Costume Coordination & Design
AMY CLARK & MARK KOSS

Lighting Design
CHARLIE MORRISON

Original Soundscape Design
GARETH OWEN

Original Broadway Costume Design
TATIANA NOGINOVA

Hair & Wig Design
LEAH J. LOUKAS

Makeup Design
ANA MARIE A. SALAMAT

Soundscape Adaptation
RANDY HANSEN

Flying Sequences Choreographed by
PAUL RUBIN

Orchestrations
DANNY TROOB

Incidental Music & Vocal Arrangements
MICHAEL KOSARIN

Flying by
FOY

Casting by
TELSEY + COMPANY
JUSTIN HUFF, CSA

Production Stage Manager
KIM VERNACE

Associate Producing Director
LORI BERGER

Production Technical Supervisor
JOHN R. EDKINS

Production Manager
SEAN WEST

Music Director
CRAIG BARNA

Choreographed by
JOHN MacINNIS

Directed by
GLENN CASALE

Originally produced by Disney Theatrical Productions

Produced in association with Paper Mill Playhouse and Kansas City Starlight Theatre.

The scenery, props, and new costumes for THE LITTLE MERMAID were created by a partnership with Pittsburgh CLO, Paper Mill Playhouse, Kansas City Starlight Theatre, Dallas Summer Musicals, and Theatre Under The Stars.

Disney's THE LITTLE MERMAID is presented through special arrangement with Music Theatre International (MTI), New York, NY.
Phone: 212-541-4684. Fax: 212-397-4684. www.mtishows.com

The video and/or audio recording of this performance by any means whatsoever are strictly prohibited.

Pittsburgh CLO is a founding member of the National Alliance for Musical Theatre,
Independent Presenters Network and The Broadway League.



“I’d like to have my questions answered in just one phone call.”

HERE’S THE PLAN

At UPMC Health Plan, we believe customer service should be a service to you, not a headache. That’s why we offer you a personal health care concierge. A live person who lives here and can answer all your questions in just one phone call. Sure, we win awards for our customer service. But it’s the reaction we get from satisfied members that we find most rewarding.

UPMC HEALTH PLAN

To find out more visit upmchealthplan.com



Cast (in order of appearance)

Ariel	Jessica Grové*
Pilot	Timothy Shew*
Prince Eric	Nick Adams*
Grimsby	Ron Wisniski*
Flounder	Christian Probst*
Scuttle	Matt Allen*
King Triton	Edward Watts*
Sebastian	Alan Mingo, Jr.*
Mersisters	Kristine M. Bennett*, Nicole Javanna Johnson*, Lisa Karlin*, Morgan Kirner*, Erica Mansfield*, Jessica Wockenfuss*
Flotsam	Scott Leiendoecker*
Jetsam	Sean Patrick Doyle*
Ursula	Liz McCartney*
Gulls	KC Fredericks*, Dennis O’Bannion*, Robbie Roby*
Chef Louis.....	Timothy Shew*
Sailors, Sea Creatures, Palace Servants, and Royal Courtiers	Kristine M. Bennett*, Ward Billeisen*, Lauryn Ciardullo*, Thay Floyd*, KC Fredericks*, Rod Harrelson*, Nicole Javanna Johnson*, Lisa Karlin*, Morgan Kirner*, Erica Mansfield*, Dennis O’Bannion*, Robbie Roby*, Timothy Shew*, Jessica Wockenfuss*

UNDERSTUDIES

For Prince Eric: Ward Billeisen*; for Sebastian: Thay Floyd*; for Flounder: KC Fredericks*;
for Gulls: Rod Harrelson*; for Ursula: Lisa Karlin*; for Ariel: Morgan Kirner*;
for Chef Louis: Dennis O’Bannion*; for Flotsam/Jetsam/Scuttle: Robbie Roby*;
for Gulls/Pilot: James Shackelford*; for Grimsby/King Triton: Timothy Shew*;
for Mersisters: Katie Ulrich*

SWINGS

James Shackelford*, Katie Ulrich*

DANCE CAPTAIN

Robbie Roby*

**Members of the Actors’ Equity Association, the union of professional actors and stage managers in the United States*

Like us on Facebook and follow us on Twitter to connect with other musical theater fans. pittsburghCLO.org



ON THE *power* OF ANOTHER
HANGS HER ETERNAL *destiny*.

—HANS CHRISTIAN ANDERSEN

Applauding another magical performance



Hefren-Tillotson

METICULOUS WEALTH MANAGEMENT SINCE 1948

888-405-0990/HEFREN.COM

member SIPC



Scenes & Musical Numbers

ACT I

Scene 1: The water's surface/Prince Eric's ship

"The World Above" Ariel

"Fathoms Below" Pilot, Sailors, Prince Eric, and Grimsby

Scene 2: King Triton's court

"Daughters of Triton" Mersisters

"If Only (Triton's Lament)" King Triton

Scene 3: Ursula's lair

"Daddy's Little Angel" Ursula, Flotsam, and Jetsam

Scene 4: Ariel's grotto

"Part of Your World" Ariel

Scene 5: Prince Eric's ship/The sea below/The beach

"The Storm" Sailors

"Part of Your World (Reprise)" Ariel

Scene 6: Mersisters' cave

"She's in Love" Mersisters and Flounder

Scene 7: The beach

"Her Voice" Prince Eric

Scene 8: Open water

"Under the Sea" Sebastian and Sea Creatures

Scene 9: Ariel's grotto

"If Only (Ariel's Lament)" Ariel

"Sweet Child" Flotsam and Jetsam

Scene 10: Ursula's lair

"Poor Unfortunate Souls" Ursula

There will be one fifteen-minute intermission

ACT II

Scene 1: The beach

"Positovity" Scuttle and Gulls

Scene 2: Open water

Scene 3: The palace, Ariel's chambers

"Beyond My Wildest Dreams" Ariel, Maids, and Grimsby

Scene 4: The palace kitchen

"Les Poissons" Chef Louis

Scene 5: The banquet hall

"Les Poissons (Reprise)" Chef Louis and Chefs

Scene 6: The palace ballroom

"One Step Closer" Prince Eric

Scene 7: Ursula's lair

"Daddy's Little Angel (Reprise)" Ursula, Flotsam, and Jetsam

Scene 8: The bay

"Kiss the Girl" Sebastian and Animals

Scene 9: Open water

Scene 10: Ariel's chambers/The beach/King Triton's court

"If Only (Quartet)" Ariel, Prince Eric, Sebastian, King Triton

Scene 11: The palace ballroom

"The Contest" Grimsby and Princesses

Scene 12: Ursula's lair

"Poor Unfortunate Souls (Reprise)" Ursula

Scene 13: The beach

"Finale" King Triton, Ariel, Prince Eric, and Ensemble



Who's Who

NICK ADAMS (*Prince Eric*) starred on Broadway as Adam/Felicia in *Priscilla Queen of the Desert* (two Audience Choice Awards, Astaire Award nomination, American Theatre Hall of Fame honoree). Also on Broadway: *A Chorus Line*, *Guys and Dolls*, *Chicago*, *La Cage aux Folles*, *The Pirate Queen*. Film: "Sex and the City 2," "An Englishman in New York." BFA Boston Conservatory. [@thenickadams](http://www.nickadams.biz)

JESSICA GROVÉ (*Ariel*) Broadway: *A Little Night Music*, *Sunday in the Park with George* (Celeste), *Thoroughly Modern Millie* (Miss Dorothy), *Les Misérables* (Eponine). *The Wizard of Oz* (Dorothy), Madison Square Garden and national tour; *The Boy Friend* (Polly) directed by Julie Andrews, national tour. *Oklahoma!* (Laurey) at PCLO. For more information, please visit www.jessicagrove.com.

MATT ALLEN (*Scuttle*) Broadway: *The Wedding Singer*, *Oklahoma!*, *Annie Get Your Gun*. National tours: *Billy Elliot*, *Spamalot*, *The Producers*, *Annie Get Your Gun*. Regional: North Shore: *A Christmas Carol* (Jacob Marley, IRNE nomination); Ogunquit Playhouse: *Buddy: The Buddy Holly Story* (Hippockets/MC); Paper Mill: *Pippin*. Thanks to Justin at Telsey, Patrick at Paper Mill, and my wife Paula.

SCOTT LEIENDECKER (*Flotsam*), a native of St. Louis, is excited to return to Pittsburgh playing a villain. Favorite credits include: Sacramento Music Circus, National Tours: *Fiddler on the Roof* (Fruma-Sarah) with Topol and Harvey Fierstein, *Camelot*, Tommy Tune in *Steps in Time* (Assistant Choreographer), *Doctor Dolittle*, and *Jesus Christ Superstar*.

SEAN PATRICK DOYLE (*Jetsam*) Broadway: *La Cage aux Folles* (2010 Tony®-winning revival). Off Broadway: *Volpone* (Red Bull), *Wig Out!* (Vineyard). Tours: *Mary Poppins*, *Fiddler on the Roof* (first countertenor to portray Fruma-Sarah), *West Side Story*, *Fame*. TV: "Law & Order," "Orange Is the New Black," Kennedy Center Honors. Film: 20th Century Fox's "The Sitter." www.seanpatrickdoyle.com

LIZ MCCARTNEY (*Ursula*) came directly from Broadway's *Annie*. She toured in *Wicked* as Madame Morrible and played Mrs. Lovett in *Sweeney Todd* at Chicago's Drury Lane. Broadway: *South Pacific* (PBS), *Phantom of the Opera*, *Mamma Mia!* (commercial), *Thoroughly Modern Millie*, *Taboo*, *Dance of the Vampires*, *Les Misérables*. Liz is also a writer and working on two musicals.

Let School Inspire You!

DISCOVER THE DIFFERENCE

EDUCATION IN A CYBER ENVIRONMENT CAN PROVIDE FOR YOUR CHILD

PA Virtual is a free public cyber charter school that moves students ahead by providing each child with their own individualized personal learning plan. All students and families are given personalized support through highly qualified, PA-certified teachers, our award-winning Family Support Department, state-of-the-art technology and the rich and rigorous K¹² Inc. curriculum which ensures all students reach their full academic and social potential.



ENROLLMENTS ARE LIMITED ENROLL NOW!



discoveryzonepavirtual.net | 866.728.2751



Pittsburgh CLO, *The Producers* | Photo: Matt Polk

For more than 65 years, Pittsburgh CLO has been an integral part of the cultural fabric of Pittsburgh and the driving force behind live musical theater in the entire Southwestern Pennsylvania region. Pittsburgh CLO is a not-for-profit arts organization that entertains nearly 200,000 patrons each year through our Summer Season at the Benedum Center, *A Musical Christmas Carol* at the Byham and year-round at the CLO Cabaret Theater. Pittsburgh CLO's commitment to the future of the musical theater art form includes the Pittsburgh CLO Academy of Musical Theater, CLO Mini Stars, the Gene Kelly Awards for Excellence in High School Musical Theater, the National High School Musical Theater Awards, the CLO/CMU New Works Project and the Construction Center for the Arts.

For more information visit pittsburghCLO.org.



LIMITLESS FUTURE.

Attention class, PPG and the PPG Industries Foundation are committed to helping students realize their potential and prepare for the future. We award numerous scholarships and educational grants to area schools and universities, encouraging students to explore the fields of science, engineering and technology. Pretty smart, huh? To see what else we're bringing to the surface, [visit ppg.com](http://www.ppg.com).



PPG Industries

Bringing innovation to the surface.™

PAINTS - COATINGS - OPTICAL PRODUCTS - SILICAS - GLASS - FIBER GLASS

Who's Who

ALAN MINGO, JR. (*Sebastian*) Broadway: *The Little Mermaid* (Sebastian), *Rent* (Tom Collins). National tours: *Shrek* (Donkey), *Hairspray* (Seaweed), *The Lion King* (Simba). Regional: Papa Ge in *Once on this Island* at Paper Mill Playhouse; Sergeant in *Pirates!* at the Muny; *The Wiz* at La Jolla Playhouse; *A Christmas Story* at Kansas City Rep. TV: "Frasier," "Law & Order." MFA, UC Irvine. www.alanmingo.com

CHRISTIAN PROBST (*Flounder*) St. Louis native. Muny: *Beauty and the Beast* (Chip), *Mame* (Young Patrick), *Peter Pan* (Michael/John), *Oliver!* (Oliver), *Sound of Music* (Friedrich), *Titanic* (Bellboy); Stages St. Louis: *Jungle Book* (Mowgli), *Annie Get Your Gun* (Jake). TV: ESPN "Countdown," "Variety Club" with Cathy Rigby. Film: "Logan," "Alice Upside Down" (Roger). Yale: *Drowsy Chaperone* (Robert), *Avenue Q* (Princeton). Theater/Economics, Yale '16.

TIMOTHY SHEW (*Chef Louis, Ensemble*) Ten Broadway shows: 1,600+ performances as Jean Valjean in *Les Misérables* and the recent, highly successful *Evita* with Ricky Martin. Seven years as Santa at Radio City. *Chicago*, *Shaggy Dog*, and *Tangled* movie soundtracks. A nationally sought after clinician and educator, Tim is thrilled to be a part of this special production. timothyshew.com. Love to J&J!

EDWARD WATTS (*King Triton*) Broadway: *Scandalous* (Robert Semple/David Hutton), *Finian's Rainbow*. Off Broadway/NYC: Encores' *It's...Superman* (Superman), *The Fantasticks* (El Gallo), NYC Opera's *The Most Happy Fella*. Tours: *Seven Brides for Seven Brothers* (Adam), *Les Misérables* (Enjolras), *Beauty and the Beast* (Gaston). Regional: *Guthrie*, *Goodspeed*, etc. TV: "Rescue Me," "The Sopranos." EdwardWatts.net

RON WISNISKI (*Grimshy*) last appeared here in his hometown in Pittsburgh CLO's *Beauty and the Beast*. National tours: *Beauty and the Beast* (Lumière), two tours of *Annie* (FDR), *Tintypes* (Teddy Roosevelt). Off-Broadway: *George Abbott's Frankie*, *A Most Secret War*, *Pillars of Society*, *Tom Jones*. His other credits number more than 150 plays and musicals at theatres nationwide. For more visit www.RonWisniski.com.

KRISTINE M. BENNETT (*Ensemble*) Selected Credits: *Disney's The Little Mermaid* (Paper Mill); *Hello, Dolly!* (NSMT); *The Fantasticks* (Fireside); *The Music Man* (Windwood); *Oklahoma!* (Ocean City Theatre); three seasons at The Gateway. Zeph. 3:17

WARD BILLEISEN (*Ensemble*) Broadway: *Anything Goes* (Tenor Quartet), *Curtains* (u/s Bobby Pepper), *Fiddler on the Roof* (Fyedka). TV: "One Life to Live," Kennedy Center Honors, "Carol Channing: Larger Than Life," Stephen Sondheim's 80th Birthday Celebration.

LAURYN CIARDULLO (*Ensemble*) National tours: *The Addams Family*, *West Side Story* (Maria u/s), *A Chorus Line*, *The Wedding Singer* (Holly), *The Wizard of Oz*. Love to Philip and Anthony.

THAY FLOYD (*Ensemble*) Pittsburgh CLO debut!! Broadway: *A Christmas Story* (Lunt-Fontanne). Regional favorites: *Kiss Me, Kate* (Paul); *Xanadu* (Melpomene); *A Chorus Line* (Richie). BFA, NYU. A huge thanks to the entire team at PCLO.

KC FREDERICKS (*Ensemble*) Honored to make his PCLO debut! Nat'l Tours: *Wicked*, *Cats*. Regional: Paper Mill Playhouse, The Muny, Maltz Jupiter. Film/TV: "Smash," "High School Musical 3." Thanks to Telsey and CTG.

ROD HARRELSON (*Ensemble*), originally from Greensboro, NC, began dancing at UNC-Chapel Hill. Broadway: *The Lion King*, *The Frogs*, *Chitty Chitty Bang Bang*, *Legally Blonde*, *Bring It On*. Love and thanks to God and family.

NICOLE JAVANNA JOHNSON (*Ensemble*) Credits include *Disney's Aladdin*, *Hairspray*, New York-based productions of *A Chorus Line*, *Bye Bye Birdie*, and *Into the Woods*. Thanks to God for this opportunity to perform. <http://www.javannaproductionsmove.com>

LISA KARLIN (*Ensemble*) Broadway: *The Addams Family* (u/s Wednesday Addams), *Ragtime* (u/s Emma Goldman). Regional: MUNY, Sacramento Music Circus, The Arvada Center, KC Starlight. Favorite roles: Velma Kelly (*Chicago*), Eva Peron (*Evita*), Florence (*Chess*).

NOW ON SALE!



Disney
PRESENTS

THE LION KING

THE WORLD'S
#1 MUSICAL

4 WEEKS ONLY

SEPTEMBER 3-29

BENEDUM CENTER

4 EASY WAYS TO BUY

Box Office at Theater Square

412-456-4800 • TrustArts.org

Groups (15+): 412-471-6930



PNC Broadway Across America-Pittsburgh is a presentation of The Pittsburgh Cultural Trust, Pittsburgh Symphony and Broadway Across America.

© Disney



Who's Who

MORGAN KIRNER (*Ensemble*) Morgan is thrilled to be making her PCLO debut! Thanks to God, Mom, Dad, sisters, family, and friends!

ERICA MANSFIELD (*Ensemble*) Straight from Paper Mill with my fish family! Broadway: *Evita*, *How to Succeed...* (u/s Miss Jones), *Mamma Mia!* Tours: *Mamma Mia!* (u/s Sophie), *A Chorus Line* (u/s Cassie, Sheila, Maggie, Judy). *Radio City* (*Mrs. Claus*). Thanks to family, Alex, my fellow fish, and Telsey. www.ericamansfield.com

DENNIS O'BANNION (*Ensemble*) Broadway: *White Christmas*. Recent: *The Music Man* (Marcellus, Carbonell nomination). Other: *Crazy For You* (Mingo), *Kiss Me, Kate* (Gremio), *Joseph...* (Levi), *Hello, Dolly!* (Judge/Stanley).

ROBBIE ROBY (*Ensemble*) Broadway: *Billy Elliot*, *Hairspray*. Other: *Spamalot* (1st Nat. Tour), *Dreamgirls* (Frank; w/Jennifer Holliday), *A Chorus Line* (Mike; Fulton), *42nd Street* (Andy Lee; Casa Mañana). B.S. Elem. Ed., Towson University. Dare to Dream!

JAMES SHACKELFORD (*Swing*) Pittsburgh CLO debut! Regional: Lyric Theatre of Oklahoma: *Hairspray* (Link Larkin), *A Chorus Line* (Al), *Ragtime* (Thaw), *Call Me Madam* (Champion). Graduate of Oklahoma City University. www.jamesdshackelford.com

KATIE ULRICH (*Swing*) BFA in Musical Theater from CU, Boulder. Credits: *42nd Street* (Peggy Sawyer) and *Drowsy Chaperone* (Janet) at Boulder's Dinner Theatre; *Legally Blonde* and *Dirty Rotten Scoundrels* at Arvada Center.

JESSICA WOCKENFUSS (*Ensemble*) Favorite credits include *Spamalot* (national tour); *Backwards in High Heels* (Ginger Rogers); and *A Chorus Line*, *The Producers*, *George M!*, and *Hello, Dolly!* at TBTS. Love to my family!

Telsey + Company:

Bernie Telsey CSA, Will Cantler CSA, David Vaccari CSA,
Bethany Knox CSA, Craig Burns CSA,
Tiffany Little Canfield CSA, Rachel Hoffman CSA,
Justin Huff CSA, Patrick Goodwin CSA, Abbie Brady-Dalton CSA,
David Morris, Cesar A. Rocha CSA, Andrew Femenella CSA,
Karyn Casl CSA, Kristina Bramhall, Conrad Woolfe,
Amelia Nadler, Rachel Minow



NUOVO LATINO BISTRO WITH SEVICHE BAR



930 PENN AVENUE
www.seviche.com



WEST COAST KITCHEN AND WINE BAR



947 PENN AVENUE
www.thesonomagrille.com



NEW ORLEANS JAZZ BRASSERIE • NOUVEAU CREOLE MENU



24 MARKET SQUARE
www.nolaonthesquare.com

Who's Who



NICK ADAMS



MATT ALLEN



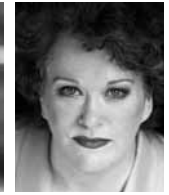
SEAN PATRICK
DOYLE



JESSICA GROVÉ



SCOTT
LEITENDECKER



LIZ
MCCARTNEY



ALAN MINGO,
JR.



CHRISTIAN
PROBST



TIMOTHY SHEW



EDWARD WATTS



RON WISNISKI



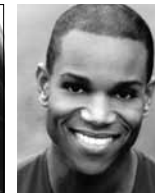
KRISTINE M.
BENNETT



WARD
BILLEISEN



LAURYN
CIARDULLO



THAY FLOYD



KC FREDERICKS



ROD
HARRELSON



NICOLE JAVANNA
JOHNSON



LISA KARLIN



MORGAN
KIRNER



ERICA
MANSFIELD



DENNIS
O'BANNION



ROBBIE ROBY



JAMES
SHACKELFORD



KATIE ULRICH



JESSICA
WOCKENFUSS



Who's Who

GLENN CASALE (*Director*) Broadway: *Peter Pan* starring Cathy Rigby (Tony Award® nomination, Best Revival), filmed by A&E (two Emmy Awards). Off Broadway: *The Property Known as Garland*, *Dragapella* at Studio 54 (Lortel Award nomination, Outstanding Musical). International: Disney's *The Little Mermaid* and *Beauty and the Beast* (Netherlands, Germany, Italy, Spain, Japan, and Russia). Tours/regional: *Doctor Dolittle*; *Ballroom* starring Tyne Daly and Charles Durning; *Wrestlers* starring Mark Harmon and George Clooney; *From the Top* starring Carol Burnett; *Camelot* starring Michael York; *The Prisoner of Second Avenue* with Jason Alexander. TV: *The Faculty* starring Meredith Baxter, *The Wayans Bros.* Glenn is artistic director for the California Musical Theater in Sacramento.

JOHN MacINNIS (*Choreographer*) is thrilled to be working on this production of *The Little Mermaid*. He recently choreographed the European productions currently running in Holland, Russia, and Japan. He also choreographed *Beauty and the Beast* in more than five European countries, including a touring production currently running in Spain. In 2011 he served as associate choreographer of the Tony Award®-winning musical *The Book of Mormon*. Other credits include directing and choreographing the Olympic Medals Ceremonies at the 2010 and 2002 Winter Olympic Games. From 1999 to 2001, he directed and choreographed the *Radio City Christmas Spectacular*, including the first international production in Mexico City.

CRAIG BARNA (*Music Director*) Broadway/New York: *Peter and the Wolf* (Brian Blessed), *Peter Pan* (Cathy Rigby), *Jesus Christ Superstar* (Ted Neeley/Carl Anderson). National tours: *Camelot* (Michael York/Lou Diamond Phillips), *Cats*, *Singin' in the Rain*, *Grease* (Jack Wagner). Regional: SMC, NSMT, PCLO, AMTSJ, TUTS, Muny. TV: A&E's *Peter Pan*, 1999 Tony Awards®, *The Rosie O'Donnell Show*, *The Today Show*, *CBS This Morning*. Concerts: John Raitt, Anna Maria Alberghetti, Susan Powell, Carol Channing, Jo Anne Worley, Carol Cook. Recordings: *Good News*; *Peter Pan*; *42nd Street*; Susan Egan: *So Far*; Debbie Gravitte: *Defying Gravity*; and the *Musicality Series* for TER Records at Abbey Road studios in the UK.

ALAN MENKEN (*Music*) Theater: *Newsies* (2012 Tony Award®, Best Score), *Aladdin*, *Leap of Faith*, *Sister Act*, *The Little Mermaid*, *Beauty and the Beast*, *A Christmas Carol*, *Little Shop of Horrors*, *Der Glöckner von Notre Dame*, and more. Film scores include *Little Shop of Horrors*, *The Little Mermaid*, *Beauty and the Beast*, *Newsies*, *Aladdin*, *Pocahontas*, *The Hunchback of Notre Dame*, *Enchanted*, *Tangled*. Awards include eight Oscars (19 nominations), 11 Grammys (including Song of the Year), seven Golden Globes, Tony® (plus four nominations), Drama Desk, Olivier, and the 2012 Drama League Distinguished Achievement in Musical Theatre Award, among others.

HOWARD ASHMAN (*Lyrics*) wrote the lyrics for the Disney animated films *The Little Mermaid*, *Beauty and the Beast*, and *Aladdin* (three songs). With composer Alan Menken, he received two Academy Awards and two Golden Globes for Best Song ("Beauty and the Beast" and "Under the Sea") and four Grammy Awards. He was author, lyricist, and director of the stage musical *Little Shop of Horrors* as well as the screenwriter for the film adaptation, which earned an Oscar nomination for Best Song.

GLENN SLATER (*Lyrics*) Broadway: *Leap of Faith* (Tony® nomination, Best Musical), *Sister Act* (Tony® nomination, Best Score), *The Little Mermaid* (Tony® nomination, Best Score; Grammy nomination, Best Musical Show Album). West End: Andrew Lloyd Webber's *Love Never Dies* (Olivier nomination, Best Musical). Off Broadway: *New Yorkers*. Film: Disney's *Tangled* (Grammy Award, Best Song Written for Visual Media; Oscar and Golden Globe nominations, Best Song), Disney's *Home on the Range*.

DOUG WRIGHT (*Book*) Broadway: *Hands on a Hardbody*, *I Am My Own Wife* (Pulitzer Prize, Tony Award®), *Grey Gardens* (Tony® nomination), *The Little Mermaid*. Film: *Quills*, based on his Obie Award-winning play, nominated for three Academy Awards. Television: *Tony Bennett: An American Classic*. Honors: Benjamin H. Danks Prize, American Academy of Arts and Letters; Tolerance Prize, KulturForum Europa; Paul Selvin Award, Writers Guild of America.

Before or After the show.




Gourmet Sandwiches, Fresh Salads, Incredible Desserts
Cappuccino / Espresso, Exceptional Wines & Distinctive Beers

Located next door to the Benedum Center

245 Seventh Street
412.434.1100
www.Salscitydeli.com



**FLY NONSTOP
TO YOUR NEXT MEETING**

150 Daily Nonstops to
Top Business Cities.

FlyPittsburgh.com
Pittsburgh International Airport




ENROLL NOW!
PACYBER
The Pennsylvania Cyber Charter School

**INNOVATIVE.
ACCREDITED.
EXPERIENCED.**

PA Cyber's tuition-free program offers:

- A comprehensive, standards-based curriculum with Virtual Classroom and self-paced choices.
- A laptop computer, printer, high-speed Internet access and all textbooks and instructional materials.
- Pennsylvania state-certified teachers.
- An Instructional Supervisor for each student, serving as a guide, mentor and liaison.
- Fast, reliable technical support services.
- Regional satellite offices and support centers for enrichment and support.

PACYBER.ORG
1.888.PACYBER (722.9237)



**OVER HERE, THE SHOW STARTS WHEN THE
LIGHTS COME UP.**

STATION SQUARE
LEGENDARY ENTERTAINMENT

DINING ENTERTAINMENT SPECIALTIES ATTRACTIONS

STATIONSQUARE.COM

Who's Who

KENNETH FOY (*Scenic Design*) Broadway: *Candida* starring Joanne Woodward, *Macbeth* with Nicol Williamson, *Annie*, *An Evening with Jerry Herman*, *Gypsy* (dir. Arthur Laurents), and more. National/international: *My Fair Lady*, *Bombay Dreams*, *Doctor Dolittle*, *White Christmas*, *The Sound of Music*, *The King and I*, Disney's *High School Musical* and *High School Musical 2*. Metropolitan Opera, Houston Grand Opera, La Scala, Radio City, Six Flags, Busch Gardens, Ringling Bros. and Barnum & Bailey Circus.

AMY CLARK (*Costume Design*) *Chaplin* (Broadway, Barrymore); *On Your Toes* (City Center Encores!); *Other Desert Cities* (Pittsburgh Public Theater); *Lord of the Flies* and *The North Pool* (Barrington Stage); *Show Boat* (Goodspeed); *Monster at the Door* (Alley Theatre). Awarded the 2012 Theater Hall of Fame Emerging Artists Fellowship. Currently designing Ringling Bros. and Barnum & Bailey Circus.

MARK KOSS (*Costume Design*) California Musical Theater: Disney's *The Little Mermaid*, *Fiddler on the Roof*, *The Producers*, directed by Glenn Casale. Other credits include San Francisco Playhouse's *Animals Out of Paper* and *Dead Man's Cell Phone*; Shotgun Players' *The Threepenny Opera*; SF Shakespeare Festival's *Pericles*; and Ray of Light Theatre's *The Who's Tommy* (BATCC Award). MFA, NYU Tisch.

CHARLIE MORRISON (*Lighting Design*) NYC: *Groovaloo*, *Grinch* (MSG). National/international: *Chitty Chitty Bang Bang*, *Miss Saigon*, *Aida*, *Guys and Dolls*, *My Fair Lady*, *The King and I*, *Gypsy*, *42nd Street*, *Smokey Joe's Cafe*, *The Who's Tommy*, *Titanic*, *The Music Man*, many others. Regional: Goodspeed, Shakespeare Theatre (DC), Seattle Rep, Paper Mill, George Street, TUTS, KC Starlight, many others. Two Helen Hayes Awards. www.cmlighting.com

RANDY HANSEN (*Soundscape Adaptation*) is Paper Mill Playhouse's resident sound designer. Over the past twenty-five years, he has designed hundreds of musicals, plays and live

events all over the country. He is the president of Audible Difference, Inc., and is married to actress Alix Korey.

LEAH J. LOUKAS (*Hair & Wig Design*) Broadway: *Vanya and Sonia and Masha and Spike*, *American Idiot*, *Irena's Vow*. Shakespeare in the Park: *Into the Woods*. Off-Broadway: *Bare*, *Checkers*, *Murder in the First*, *Carrie*, *Tribes*, *The Dance and the Railroad*. Paper Mill Play House: *The Sound of Music*. Associate Designer: *Motown*. Thanks and love to her Family!

ANA MARIE A. SALAMAT (*Makeup Design*) Makeup design/consulting/artist for various New York and regional productions in theater, film, and print. Recent makeup design/consultations: *On Your Toes* (NY City Center Encores!), *Bride* (Lone Wolf Tribe), *Les Misérables* (Signature Theatre, Arlington, VA). MFA/Costume Design, University of Maryland, College Park. www.anamariesalamat.com

PAUL RUBIN (*Flying Sequence Choreographer*) Broadway: *Wicked*, *Peter Pan* with Cathy Rigby, *Curtains* with David Hyde Pierce, *The Pirate Queen*, *Frozen*, *The Green Bird*, *Kiss Me Kate*, *Dance of the Vampires*, *Fiddler on the Roof*, and *Saturday Night Fever*. Off Broadway: *Angels in America*, *Edward the Second* and *Prisoner of the Crown*. International: *Disney's The Little Mermaid* (Holland, Moscow, Tokyo) & *Spam!ot*. www.TheFlyGuy.com Twitter: @theflyguy

KIM VERNACE (*Production Stage Manager*) Broadway credits include *Chaplin*, *Hugh Jackman Back on Broadway*, *A Tale of Two Cities*, *Seafarer*, *Coram Boy*, *Bevin' Out*, *The Music Man*, *Aida*, *Chicago*, and *Beauty and the Beast*. National touring credits include *Billy Elliot*, *Hello, Dolly!*, *Cats*, *Beauty and the Beast*, and *Annie*.

MEGAN SCHNEID (*Assistant Stage Manager*) Broadway: *Chaplin*, *Bonnie & Clyde*, *Priscilla Queen of The Desert*, *Tale of Two Cities*, *All Shook Up*. Tours: *Hugh Jackman In Performance* (Toronto), *Twelve Angry Men*, *White Christmas*. Love to Mark, Mom, Dad, Mike, Matt & Mia.

Great programs for young minds!

Architecture Explorations

Offering Architecture Saturday, Summer, and School Programs, Grades K-12

Contact Us:
kellyons@cmu.edu
(412) 268-1541

C-MITES

Fun Classes for Bright Kids!
Offering Weekend & Summer Programs, Grades K - 9

Contact Us:
(412) 268-1629, ext 1
www.cmities.org

www.cmu.edu



Architecture Explorations



C-MITES

children's museum
PITTSBURGH

Through September 1

ADVENTURES with **Clifford THE BIG RED DOG**

SCHOLASTIC
www.scholastic.com

Sponsored by

pittsburghkids.org

™ & © Scholastic, Inc. CLIFFORD THE BIG RED DOG and associated logo is a trademark of Norman Bridwell. All rights reserved.

our newest exhibition...

BIKES
SCIENCE ON TWO WHEELS

Presented by **Dollar Bank**
Since 1855

CARNEGIE SCIENCE CENTER

Who's Who

JEFFREY RODRIGUEZ (*Assistant Stage Manager*) Broadway: *Spider-Man: Turn Off the Dark, Anything Goes, Bye Bye Birdie, The Drowsy Chaperone, 25th Annual...Spelling Bee*. NY Philharmonic/Live from Lincoln Center (PBS): *Carousel, Camelot, My Fair Lady*. Graduate of NYU's Tisch School of the Arts.

SEAN WEST (*Production Manager*) is happy to be returning to Pittsburgh CLO for his tenth season as production manager. He just finished the season with the Pittsburgh Opera as a production carpenter, and the year as a theater supervisor for Carnegie Mellon University. He is glad to be back and looking forward to another fun and exciting season.

TELSEY + COMPANY (*Casting*) Broadway/Tours: *First Date, Motown, Kinky Boots, Annie, Newsies, Spider-Man Turn Off the Dark, Rock of Ages, Wicked, Porgy and Bess, Evita, Priscilla Queen of the Desert, Sister Act, Million Dollar Quartet*. Off-Broadway: *Nobody Loves You* (2nd Stage), Atlantic, MCC, Signature. Regional: La Jolla, Paper Mill. Film: *The Odd Life of Timothy Green, Friends with Kids, Joyful Noise, Margin Call, Sex and the City 1 & 2, I Love You Phillip Morris, Rachel Getting Married, Dan in Real Life, Across the Universe*. TV: "Smash," "The Big C," commercials. www.telseyandco.com

PAPER MILL PLAYHOUSE (Mark S. Hoebee, Producing Artistic Director; Todd Schmidt, Managing Director) in Millburn, NJ, opened in 1938 and is consistently recognized for its re-imagined musicals and for supporting the development of new works and emerging artists. A renowned center for musical theater education and performance, Paper Mill boasts award-winning training and outreach programs impacting over 50,000 students each year. Visit PaperMill.org.

KANSAS CITY STARLIGHT THEATRE (Denton Yockey, President and Executive Producer) opened in 1951 and is the largest and oldest performing arts organization in Kansas City and the second largest outdoor producing theater in the country. In addition to presenting and

producing Broadway musicals and concerts, Starlight offers extensive educational programs and community outreach. Visit kcstarlight.com.

MUSIC THEATRE INTERNATIONAL (MTI) is a leading theatrical licensing agency, granting schools as well as amateur and professional theaters the rights to perform the largest selection of great musicals. MTI works directly with composers, lyricists, and book writers to provide scripts, musical materials, and resources to over 60,000 theatrical organizations in the U.S. and more than 60 countries.

ACTORS' EQUITY ASSOCIATION, founded in 1913, represents more than 49,000 actors and stage managers in the U.S., negotiating wages and working conditions and providing a wide range of benefits.

Official Ticketing Websites

www.pittsburghCLO.org and www.culturaldistrict.org are the only **AUTHORIZED TICKET PROVIDERS** for Pittsburgh CLO.

Tickets from other sources may be:
1) more expensive, **2)** invalid and **3)** ineligible for assistance.

We are not responsible for tickets purchased from other sources.

412-456-6666
www.pittsburghCLO.org

Pittsburgh CLO Academy

The Pittsburgh CLO Academy of Musical Theater gives kids the opportunity to develop a passion for the performing arts through professional-level instruction in acting, singing and dancing. Students have the chance to learn from seasoned performers and university instructors through the CLO Academy's affiliation with a respected musical theater company. Students learn valuable skills and gain confidence that will benefit them in all areas of life – both onstage and off.

The CLO Academy has something for everyone. Children can delve into musical theater through three different programs: the **Children's School** (ages 3-11); the **Student School** (ages 12-18); and the **Pre-Professional School** (students ages 10-18 hoping to pursue musical theater professionally). In addition, Pittsburgh CLO offers the **New Horizons** program, which allows students with physical or developmental

disabilities to have fun with music, movement and drama in a non-therapeutic, encouraging environment.

The Academy also opens the door for possible film, television and theater opportunities. Several Academy students experienced the thrill of performing on the Benedum Center's stage during the Pittsburgh CLO 2013 Summer Season. Academy teens kicked up their heels in the opening number of *42nd Street*. In *Seven Brides for Seven Brothers*, students cartwheeled in high-energy dance numbers. Kopit and Yeston's *Phantom* featured students portraying children in turn-of-the-century Paris. These students gained invaluable performing experience and lifelong memories.



Pittsburgh CLO Academy Class



Pittsburgh CLO Academy Students

Pittsburgh CLO Academy students have the opportunity to participate in an All-Academy Musical, as well as multiple workshops, master classes and performance classes. Academy students have gone on to attend prestigious performing arts schools, including Carnegie Mellon University, Boston College, The Julliard School and Point Park University.

The excitement lasts all year long with the Academy's **Summer Performance Camps**. The CLO Academy's summer performance camps allow students ages 3-18 to work with a director, music director and choreographer to get a taste of what it's like to bring a musical from the studio to the stage. The **Pre-Professional Performers' Intensive Camp (PPI)** is a three-week program where aspiring artists train with top-notch performers, directors and choreographers. They attend Pittsburgh CLO rehearsals and performances to observe professionals in action. This year the PPI camp is performing *Rent*.

Registration for fall classes opens soon! Come visit the Academy at its annual **Open House on August 10**. To learn more information about the CLO Academy, or to request a brochure, call **412-281-2234** or visit **pittsburghCLO.org**.

Pittsburgh CLO Mini Stars

Share Talent with the Tri-State Area

The Pittsburgh CLO Mini Stars feature Pittsburgh's brightest young performers. For more than 30 years, this group has been wowing audiences with impressive song and dance productions at public events, corporate functions and special occasions in the tri-state area. Each year, performers ages 12-16 are chosen to be a part of this select group of artists. Their choreographed, professional-level shows have made them a crowd favorite.

Pittsburgh CLO Mini Stars have the exciting opportunity to train with musical theater professionals to hone

their performing skills and grow as artists. The passion they have for the arts is evident with each high-energy performance. They have performed at venues and events including Walt Disney World's Epcot Center, Kennywood, Pittsburgh's First Night celebration and the re-opening of the fountain at Point State Park this June. In addition, some Mini Stars performed in *42nd Street*'s iconic opening tap number this summer. Past Pittsburgh CLO productions featuring Mini Stars include *Annie*, *Fiddler on the Roof* and *Grease*.

The CLO Mini Stars program has been a training ground for many artists who have gone on to great performing careers. In fact, Mini Star alumnus Billy Porter won the Tony Award® for Best Actor in a Musical this summer for his role in Broadway's *Kinky Boots*. Other alumni have appeared in movies including "Star Trek," "Holes" and "Heroes." This summer, former Mini Stars Connor McRory, Stephanie Maloney and Andrea Weinzierl are performing in the Pittsburgh CLO 2013 Summer Season.

For more information, or to schedule the Pittsburgh CLO Mini Stars for your next event, call **412-281-2234** or email **CLOAcademy@pittsburghCLO.org**



Pittsburgh CLO Mini Stars

From History Page to Auditorium Stage: GALLERY OF HEROES

Brings Educational Musicals to Your School

Pittsburgh CLO's Gallery of Heroes combines education and musical theater to create a fun and engaging learning experience. Local students watch history come to life in performances created just for them. These musicals include professional actors, choreography, costumes, scenery and sound to tell stories from history in a new and exciting way. These productions are an exceptional alternative to traditional lectures and lesson plans and meet Pennsylvania state academic standards.

The Gallery of Heroes program began in 1985, and since then the 50-minute productions have been a hit with both students and teachers in Pittsburgh area schools. Past productions have taught students about the lives of important historical figures such as Neil Armstrong in *Footprints on the Moon*, Harriet Tubman in *Freedom Train* and Jackie Robinson in *Play to Win*. In addition, Pittsburgh's rich history has been portrayed in shows including *The Incredibly Innovative Innovators of Pittsburgh* and *Steel*.

These full-scale musical productions expose students to musical theater – many for the very first time. This past spring, *We the People, the Musical* explored the Constitution and what it truly means to be an American as it visited local schools.

Next year, the musical *The Invention of Edison* will tour the area from January to May 2014 and teach students about Thomas Edison. The show is sure to thrill with its talented cast and exceptional music.

Major funding for Gallery of Heroes is provided by: the Massey Charitable Trust and the National Endowment for the Arts. For more information, or to book *The Invention of Edison* at your school, call **412-325-6459** or visit **pittsburghCLO.org**.



Cast of We The People, the Musical | Photo: Archie Carpenter

5 Spectacular Performances!
FOR YOUNG AUDIENCES

Season Tickets
START AT JUST \$40!

Citizens Bank
PITTSBURGH INTERNATIONAL

Children's Theater
2013-2014 SEASON

PITTSBURGH CULTURAL TRUST

TRUSTARTS.ORG/KIDS
GROUPS: 412-471-6930 SEASON TICKETS: 412-456-1390

Pittsburgh CLO
GALLERY OF HEROES

Bringing History to Life!
Educational Musicals in your school

The invention
of *Edison*

Touring
January - May 2014

Thomas A. Edison

Meet your Pennsylvania Academic Standards

BOOK NOW! ♦ 412-325-6459 ♦ pittsburghCLO.org



Who's Who

PITTSBURGH CLO has been a driving force behind the preservation, creation and promotion of live musical theater since 1946. As one of the largest regional musical theater organizations in the country, it is fortunate for the yearly support of nearly 200,000 audience members. In addition to producing fresh new productions of Broadway classics, the not-for-profit's mission is to develop new works and showcase emerging talent, and has been credited with launching the careers of numerous artists such as Rob Marshall, Kathleen Marshall, Rob Ashford, Bernadette Peters, Shirley Jones and Susan Schulman. The organization's dedication to musical theater extends beyond its six-show summer season at the Benedum Center to year-round programming at its 250-seat CLO Cabaret Theater, which recently saw the Pittsburgh premiere of *You Say Tomato, I Say Shut Up!* Its extensive education efforts include its CLO college intern program, New Horizons, and in-school programs such as the Gallery of Heroes and Creative Vision. Other ongoing initiatives include the Pittsburgh CLO Academy of Musical Theater, CLO Mini Stars, the Construction Center for the Arts, The Richard Rodgers Award, and the acclaimed Gene Kelly Awards for Excellence in High School Musical Theater. The organization also founded and co-produces the National High School Musical Theater Awards. To further its mission to grow the art form, it has invested in and co-produced musicals currently on Broadway: *Rodgers & Hammerstein's Cinderella*, *Matilda* and *Kinky Boots*. Additionally: *Evita*, *The Addams Family*, *Come Fly Away*, *Catch Me If You Can*, *9 to 5: The Musical*, *Legally Blonde The Musical*, *Curtains*, *Monty Python's SPAMALOT*, *Thoroughly Modern Millie*, *Bombay Dreams*, *Oprah Winfrey's The Color Purple*, *Flower Drum Song*, *Chita Rivera: The Dancer's Life* and Deaf West's production of *Big River*. Pittsburgh CLO is a founding partner of 5 Cent Productions/Elephant Eye Theatricals, a producing consortium devoted to new musicals such as *The Addams Family* and the upcoming *An American in Paris*. In 2007, the organization assisted Disney Theatrical Productions in launching the

National Tour of *Disney's High School Musical*. Pittsburgh CLO is the subject of a 2007 film starring Jeff Goldblum titled "PITTSBURGH." www.pittsburghCLO.org.

VAN KAPLAN (*Executive Producer*) joined Pittsburgh CLO in 1997. In addition to overseeing the organization's year-round producing and programming efforts, he has produced or co-produced the Broadway productions of *Evita*, *Catch Me If You Can*, *Come Fly Away*, *The Addams Family* and the upcoming production of *An American in Paris*. He has also produced touring productions of *Camelot*, *Joseph and the Amazing Technicolor Dreamcoat*, *Phantom*, *Singin' in the Rain*, *Chess*, *Grand Hotel*, *City of Angels*, *Evita*, *Brigadoon* and *Nunsense II*. His directorial credits include *Guys and Dolls* with Victoria Clark, *She Loves Me*, *West Side Story* with Max Von Essen and Ali Ewoldt, *Kopit & Yeston's Phantom*, *On the Town*, *Sweeney Todd* with Candy Buckley, *South Pacific* with Cathy Rigby, *Nunsense*, *Shear Madness*, *Ruthless!*, *Guys and Dolls* with Georgia Engel and the regional premiere of Andrew Bovell's *Speaking in Tongues* at Pittsburgh's Quantum Theater. Since 2009 he has directed The Jimmy™ Awards at the Minskoff Theatre on Broadway. He has also directed original shows for Caesars Entertainment at the Rio, Paris and Bally's Hotels in Las Vegas. He has consulted for the National Endowment for the Arts, is a former Theatre Panel chair for the Texas Commission on the Arts, and has served as adjunct professor for Carnegie Mellon's Masters of Arts Management Program. He is on the Board of The Broadway League, serves on the Investment Committee of the Independent Presenters Network (IPN) and is past president of The National Alliance for Musical Theatre (NAMT). He is president of the National High School Musical Theater Awards - also known as The Jimmy™ Awards, the subject of a 3-part documentary series that aired nationally on PBS in September. He has been a Tony Awards® voter for more than 20 years.



IMAGINATION UNTAMED

PNC
BROADWAY



2013-2014
ACROSS AMERICA
PITTSBURGH



Disney
PRESENTS
**THE
LION KING**
BROADWAY'S LANDMARK MUSICAL
SEPTEMBER 3-29, 2013
BENEDUM CENTER

**WE WILL
ROCK
YOU**
THE MUSICAL QUEEN + Ben Elton
OCTOBER 29-NOVEMBER 3, 2013 BENEDUM CENTER

elf
The Broadway Musical
NOVEMBER 26-DECEMBER 1, 2013 BENEDUM CENTER

GHOST
THE MUSICAL
DECEMBER 31-JANUARY 5, 2014 HEINZ HALL

The Gershwins'
Porgy and Bess
FEBRUARY 25-MARCH 2, 2014 BENEDUM CENTER

Once
MARCH 11-16, 2014 BENEDUM CENTER

**PETER AND THE
STARCATCHER**
MAY 20-25, 2014 HEINZ HALL

Pittsburgh
CLO
Academy of Musical Theater



Start Your BROADWAY Dreams Here!

Register today for the NEW Semester

OPEN HOUSE
August 10th · 10am-12pm

Try a class for FREE!
Tap · Ballet · Musical Theater · Voice

Enroll online @ pittsburghCLO.org
For a brochure call 412-281-2234



Pittsburgh CLO Academy of Musical Theater
Penn Avenue Place • 130 CLO Academy Way, 8th Floor • cloacademy@pittsburghCLO.org

412-281-2234

pittsburghCLO.org



TRUSTARTS.ORG SEASON TICKETS | GROUP TICKETS
412-456-1390 | 412-471-6930

PNC Broadway Across America - Pittsburgh is a presentation of The Pittsburgh Cultural Trust, Pittsburgh Symphony and Broadway Across America. "Broadway Across America" is a registered service mark of Key Brand Entertainment, Inc. All rights reserved.

pittsburghCLO.org - 29

Up Next at the CLO Cabaret...



DEFENDING THE CAVEMAN

Broadway's Smash Comedy About the Sexes

Written by Rob Becker

AUGUST 1 - OCTOBER 20

Adult Content



FOOD, FUN & LOTS OF LAUGHS!

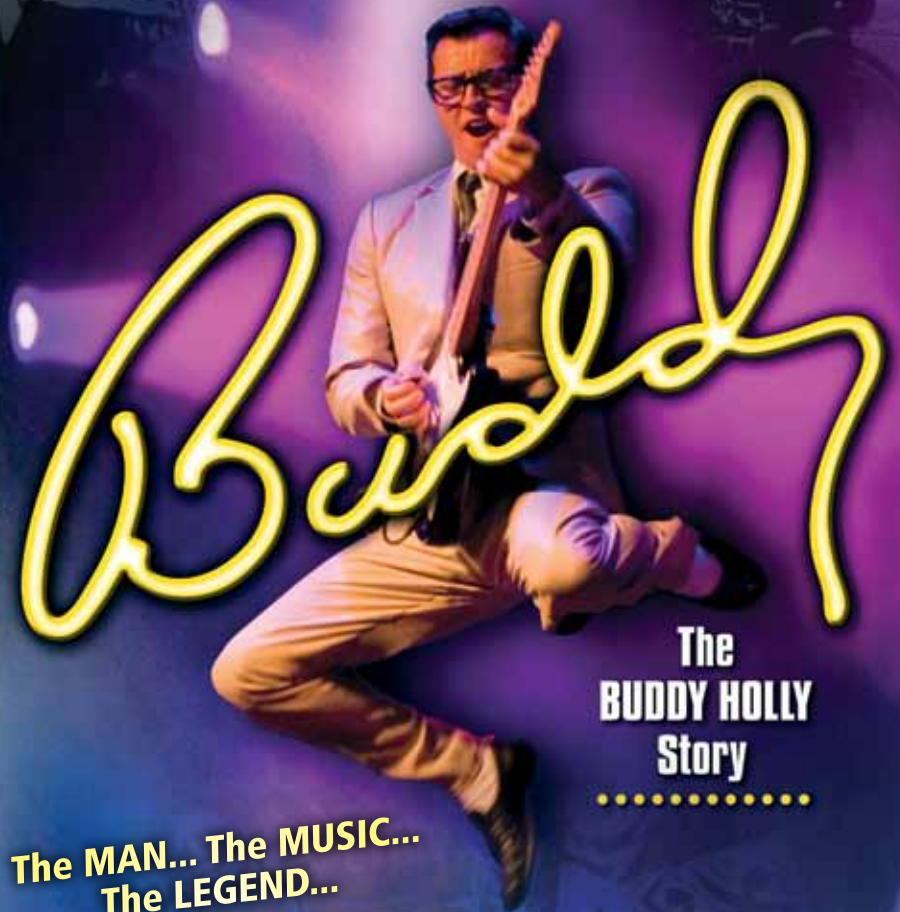
412-456-6666

CLOCabaret.com

GROUPS 412-325-1582

THE CABARET AT THEATER SQUARE IS A PROJECT OF THE PITTSBURGH CULTURAL TRUST

Up Next at the Benedum Center...



The MAN... The MUSIC...
The LEGEND...

JULY 30 - AUGUST 4



CLO SEASON SPONSORS:

Pittsburgh Post-Gazette



412-456-6666

pittsburghCLO.org

GROUPS 412-325-1582

You don't have to stay here to savor here.

Before the show, experience cuisine like never before at the Terrace Room, Pittsburgh's premiere historic dining room. Enjoy world-class fare and warm, professional service in an atmosphere of understated elegance. Have a prohibition-style cocktail after the show at the new Speakeasy Social Lounge. No passwords required.

Pre-theater specials available. Sunday brunch and complimentary valet parking.
For reservations, call 412-553-5253.



OMNI  HOTELS & RESORTS
william penn | pittsburgh

530 William Penn Place • Pittsburgh, Pennsylvania 15219
412-281-7100 • omnihotels.com/pittsburgh



Your Home for the Holidays!



November 7 - January 12
CLO Cabaret



Top to Bottom: J.D. Daw, Marcus Stevens, Joe Donomere, Adam Halpin | Photo: Harry Giffino



THE CABARET AT THEATER SQUARE IS A PROJECT OF THE PITTSBURGH CULTURAL TRUST

CLO SEASON SPONSORS:



EXPERIENCE THE MAGIC OF

A Musical CHRISTMAS CAROL

December 6 - 22
Byham Theater



Simon Nigam & Tom Atkins | Photo: Harry Giffino

412-456-6666

pittsburghCLO.org Groups 412-325-1582

ACTION NEWS 4

Demetrius Ivory Michelle Wright Kelly Frey Janelle Hall

**Start Your Day
The Pittsburgh Way!**

Weekdays
4:30, 5:00 & 6:00AM

ADVERTISE IN THE CULTURAL DISTRICT

YOUR AUDIENCE AWAITS!

To schedule your advertising in the Pittsburgh Cultural District programs call **Elaine A. Nucci 412-471-6087** or email **Nucci@culturaldistrict.org**



THE REVIEWS ARE IN!

It's thumbs up all the way. See what our customers are saying about the show-stopping experience they receive at #1 Cochran.

★★★★★
 "Without question, it was one of the nicest experiences in buying a car that I have ever had. No pressure, knowledgeable and courteous! Need I say more?
 Service has been exceptional!"
Hank

★★★★★
 "I'd recommend anyone to work with #1 Cochran."
Alanna

★★★★★
 "Had an amazing experience buying my F-150. I won't shop anywhere else for a vehicle. There wasn't any pressure and they were only worried about making me happy."
Jess

★★★★★
 "It seems like I shopped every Nissan Dealer between Cleveland and Philadelphia before I found my Black Cherry Nissan 370Z at #1 Cochran Nissan. Well worth the drive from Fairview to Pittsburgh!"
Lisa

★★★★★
 "Best car buying experience ever!"
Kat

★★★★★
 "Absolutely wonderful. Courteous, respectful and willing to work with us to find something in our price range. Great salespeople. All around wonderful experience. Will be going back for sure!"
Shannon

★★★★★
 "I love these guys."
Melanie

★★★★★
 The entire #1 Cochran team was easy to work with and provided great service. I felt comfortable with the product that I was buying and that the price was right. The buying experience was much easier than another recent purchase from another dealer.
Shawn



Read more customer reviews at DealerRater.com or check out our Testimonials section at cochran.com.



KIA SUBARU CADILLAC NISSAN INFINITI BUICK FIAT HYUNDAI
 VOLKSWAGEN GMC DODGE RAM CHRYSLER JEEP FORD

VIBRANT INNOVATIVE
 EDUCATIONAL ART
 CREATE LIVE OUT
 SPECTACULAR EN
 MUSICAL THEATRE
 PERFORMERS TAL
 CELEBRATE EXCE
 BRA
 EN
 EN
 VIBE
 EAT
 TALENTED VIBRANT
 LIVE EXCEPTIONAL
 APPLAUSE CLO DE
 CRITICALLY ACCLA
 BOLD CELEBRATIO
 INNOVATIVE CREA

We deliver
 bold statements.

We're proud to sponsor the Pittsburgh
 CLO Summer Season, and we applaud
 the great performances that bring our
 cultural district to life.

Pittsburgh Post-Gazette®
 post-gazette.COM



IDEAS FOR A SMARTER, FASTER WORLD®

Advertising
 Digital
 1:1 Marketing
 Promotion
 Public Relations

Pittsburgh PA | Washington DC | Atlanta GA

11 Stanwix Street | 5th Floor | Pittsburgh PA 15222-1312 | 412 995 9500 | brunnerworks.com | brunnerworks.mobi



We are proud to spotlight the Pittsburgh
 CLO and support its passion
 for inspiring others.

Through our affordable housing
 programs, FHLBank Pittsburgh
 also works to inspire
 communities throughout our region.



1-800-288-3400 • www.fhlpgh.com



Giant Eagle Applauds the Pittsburgh CLO



Thank You

The CLO "A" in Arts Program is made possible by a grant from the CLO Ambassadors.

The CLO Gallery of Heroes in-school program and *We the People, the Musical* are sponsored by AT&T, Dominion, Highmark Blue Cross Blue Shield, The Massey Charitable Trust and Pittsburgh Corning.

The Gene Kelly Awards are presented in partnership with the University of Pittsburgh. Additional support is provided by Highmark Blue Cross Blue Shield, PNC, Virginia S. Nicklas, and by the CLO Ambassadors.

The Charles Gray Award for Special Achievement in Arts Education is underwritten by the Roy A. Hunt Foundation.

CLO New Horizons is made possible in part by UPMC and Highmark Blue Cross Blue Shield.

Sponsorship for the CLO Mini Stars is provided by the CLO Guild.

Disney's The Little Mermaid is sponsored by PNC as part of the PNC Spotlight Series.

Stars of Pittsburgh CLO's Summer Season dine at the Grand Concourse Restaurant at Station Square.

The Omni William Penn is the Official Hotel of the Pittsburgh CLO.

#1 Cochran is the Official Car provider of the Pittsburgh CLO.

Pittsburgh CLO Orchestra Musical Coordinator · Frank Ostrowski

Violins
Raymond Eichenmuller
Concert Master
Larry Yagello

Cello
Joseph Bishkoff, Jr.

Bass
Jeffrey Mangone, Sr.

Woodwinds
George Hoydich
Cynthia Anderson
James Germann

Horn
Matthew Litterini

Trumpet
Stephen Hawk

Keyboards
Colin Freeman
Assistant Conductor
James Burns
Jerry Dantry

Drums
Joshua Priest

Percussion
Albert Wrublesky



Pittsburgh CLO Corporate & Foundation Donors

The Pittsburgh CLO thanks its many community partners who have supported the 2013 Annual Campaign (October 1, 2012 through June 24, 2013). Their support plays a critical role in helping the CLO to provide the very best in musical theater and arts education programs throughout the region.

The Pittsburgh CLO is grateful for the generous support provided by The Pittsburgh Cultural Trust

DIAMOND CIRCLE (\$25,000 and Above)

#1 Cochran (9)*
EQT Foundation (33)**
Highmark Blue Cross Blue Shield (26)**
Mine Safety Appliances Company, Inc. (51)
Omni William Penn Hotel (5)*
Oxford Development Company (9)*
Pittsburgh Post-Gazette (13)*
PNC Foundation (62)**
University of Pittsburgh (14)**
UPMC (14)**
WTAE-TV (13)*

GOLD CIRCLE (\$10,000 - \$24,999)

BNY Mellon (55)**
Capital Wine & Spirits (11)*
Dollar Bank (14)**
First National Bank of Pennsylvania (7)**
First Niagara Bank (3)
Giant Eagle, Inc. (11)*
Hefren-Tillotson Inc. (18)**
H.J. Heinz Company Foundation (27)
Macy's (25)
ReedSmith (15)
RR Donnelley (11)*
Spang & Company Charitable Trust (35)**

SILVER CIRCLE (\$5,000 - \$9,999)

Allegheny Technologies (33)**
Bayer Healthcare (13)
Burns White LLC (4)
Eat'n Park Restaurants, Inc. (11)**
Ernst & Young (18)
Federal Home Loan Bank of Pittsburgh (6)
Federated Investors (13)
Frank B. Fuhrer Wholesale Company (6)**
IT&LY HAIRFASHION N.A., INC. (1)
GlaxoSmithKline Consumer Healthcare (15)**
MARC USA (2)
M.J. Brunner Inc. (11)
PPG Industries (52)**

EXECUTIVE PRODUCER'S CIRCLE (\$2,500 - \$4,999)

Black Box Network Services (3)
Buck Consultants, Inc. (1)
Clark Hill Thorp Reed (5)
Cohen & Grigsby PC (9)
Development Dimensions International (4)
Dominion Foundation (32)**
First Commonwealth (6)**
Fort Pitt Capital Group (1)**
Koppers, Inc. (8)
KPMG, LLP (15)
Northwest Savings Bank (4)
NuVision Engineering (1)
UPMC Health Plan (11)**
Webb Law Firm (7)

PRODUCER'S CIRCLE (\$1,000 - \$2,499)

Alpern Rosenthal (11)
The Buncher Company (7)
C.S. McKee LP (4)
Deloitte (12)
Eckert Seamans Cherin and Mellott, LLC (10)
Ellwood Group, Inc. (6)
Enterprise Bank (10)
ESB Bank (7)**
Fair Oaks Foundation (20)
HHM Insurors (11)
Joseph B. Koval Real Estate (1)
Larrimor's (10)*
Louis Plung & Company (2)
Morgan Stanley Smith Barney (1)
Target Stores (11)**
Traveler's Insurance Companies, Inc. (1)

DIRECTOR'S CIRCLE (\$500 - \$999)

Abarta, Inc. (8)
Bender Consulting Services, Inc. (1)
George V. Hamilton Inc. (8)**
Henderson Brothers, Inc. (10)
McKamish, Inc. (8)
Meyer, Unkovic & Scott LLP (3)
Percheron Field Services (1)
Rotary Club of Bridgeville (8)**
Rotary Club of Carnegie (7)**
Rotary Club of Crafton-Ingram (11)**
Rotary Club of Highlands (1)**
Rotary Club of McKees Rocks (9)**
Rotary Club of New Kensington (4)**

Rotary Club of Oakmont (7)**
Rotary Club of Turtle Creek (8)**
Standard Bank (18)

The following have provided matching gifts for their employees' contributions to Pittsburgh CLO

3M Foundation
AIG
Apple
BNY Mellon
Capital Group Companies
Dollar Bank
Dominion
Emerson Electric Co.
EQT
Google
Highmark
Home Depot
PNC Foundation
PPG Industries
Robert Morris University
The Prudential
Wachovia

FOUNDATIONS

The Audrey Hillman Fisher Foundation (2)
Bozzone Family Foundation (11)
Charity Randall Foundation (30)
Anne L. and George H. Clapp Charitable Trust (10)
The Heinz Endowments (66)
The Jack Buncher Foundation (4)
Massey Charitable Trust**
Founders: Harris B. Massey and Doris J. Massey (65)
Milton G. Hulme Charitable Foundation (62)
Norman C. Ray Trust (11)
Pauline Pickens Charitable Trust (16)**
Stephen and Debra Todd Fund of the Pittsburgh Foundation (4)
The Edith L. Trees Charitable Trust (10)**
The Grable Foundation (15)**
The Hillman Foundation (6)
The Pittsburgh Foundation (4)
The Robert and Mary Weisbrod Foundation (47)
Vernon C. Neal & Alvina B. Neal Fund (13)**
W. I. Patterson Charitable Fund (46)

Pittsburgh CLO Corporate & Foundation Donors

Pittsburgh CLO thanks the Guild and the Ambassadors for their generous support of the CLO Performance Season and CLO's Education and Outreach Programs.

() Number denotes years of support to Pittsburgh CLO

* All or part represents In-Kind Services

** All or part of gift restricted to support of the CLO Academy and its Education and Outreach Programs.

Listing is complete as of 6/24/13. Every attempt is made to ensure that listings are correct, but if there are errors or omissions, please contact the CLO Development Office at 412-281-3973, ext. 215.

To become a Pittsburgh CLO donor, please visit us online at pittsburghCLO.org, or send your contribution to:

Pittsburgh CLO
Development Office
Benedum Center
719 Liberty Avenue
Pittsburgh, PA 15222

Thanks to Oxford Development Company for their support of the Musical Theater Initiative

Pittsburgh CLO thanks



**for its support of
Disney's The Little Mermaid**



A LEAD PRODUCER makes the show go on!

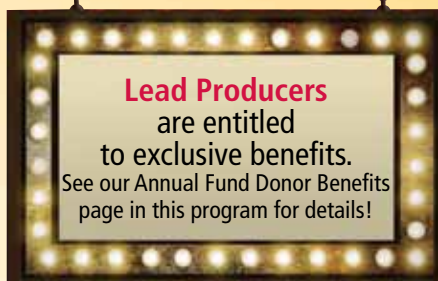
A **Lead Producer's** financial contribution helps Pittsburgh CLO bring the magic of live musical theater and life-enhancing arts education programs to generations of Pittsburghers. As a Lead Producer, you will personally touch the lives of more than 200,000 residents of all ages each year through your support of our Summer Season performances, *A Musical Christmas Carol*, year-round productions at the CLO Cabaret, the Pittsburgh CLO Academy and our nine education and outreach programs.

Pittsburgh CLO recognizes, with gratitude, our 2013 Lead Producers (as of June 18, 2013). We are proud to have you representing our goals and values, and we are sincerely thankful for your support.

Lead Producers (\$10,000 and above)

Daniel and Debby Booker (26)
Tony and Linda Bucci (7)
Kim and Curt Fleming (14)
Joe and Kathy Guyaux (12)
Kevin and Vicki Halloran (11)
Rose M. Kutsenkow IMO Dr. Michael Kutsenkow (2)
Bill and Sandy Lambert (14)
Mr. and Mrs. Robert C. McCartney (33)
Mark and Diane Minnaugh (9)
Charlene and Dominic Petrelli (4)
Matthew and Carolyn Ray (3)
Ron and Patricia Violi (5)

() Number denotes years of support to Pittsburgh CLO
IMO: In Memory of



Conrad John Schuck as Oliver Warbucks
and Johanna Loughran as Annie in
Pittsburgh CLO's *Annie*. Photo: Matt Polk

Isn't this the year to play a leading role in your community?
Call 412-281-3973 extension 210 to become a
LEAD PRODUCER at Pittsburgh CLO!

Annual Fund Donor Benefits

Gene Kelly Producers Society

Lead Producers (\$10,000 and above)

- ♪ Special dinner and show with Executive Producer.
- ♪ Opportunity to donate 25 Kelly Circle tickets to a non-profit organization.
Plus all benefits enjoyed by Producing Directors

Producing Directors (\$5,000 - \$9,999)

- ♪ A night at the CLO Cabaret for four, including dinner, drinks, and parking.
Plus all benefits enjoyed by Executive Producers

Executive Producers (\$2,500 - \$4,999)

- ♪ Two complimentary season tickets for the 2014 Summer Season.
Plus all benefits enjoyed by Producers

Producers (\$1,000 - \$2,499)

- ♪ Free parking for six CLO performances.
- ♪ Concierge ticket service.
- ♪ Backstage tour for four.
- ♪ Two additional complimentary tickets to a Pittsburgh CLO-produced performance.
- ♪ Invitation to the *Supper with the Stars* during the Summer Season.
- ♪ Producers Society Member Discount at the CLO Boutique.
Plus all benefits enjoyed by Patrons

Patrons (\$500 - \$999)

- ♪ A CD of the production of your choice from the 2013 Summer Season.
- ♪ Tour of the CLO Construction Center for four.
Plus all benefits enjoyed by Sponsors

Sponsors (\$250 - \$499)

- ♪ Two complimentary tickets to a Pittsburgh CLO-produced performance.
- ♪ Discount coupon for the CLO Boutique.
Plus all benefits enjoyed by Limelighters

Limelighters (\$100 - \$249)

- ♪ Invitation to a staged reading of a new work.
- ♪ Complimentary beverage for you and your guest during a Pittsburgh CLO intermission.
- ♪ Listing in the season program (date restrictions apply).
Plus benefit enjoyed by Backers

Backers (\$50 - \$99)

- ♪ CLO notepad folio.

To become a Pittsburgh CLO donor, visit pittsburghCLO.org, call 412-281-3973 extension 210, or mail to the Development Office, 719 Liberty Avenue, Pittsburgh, PA 15222.

Thank you for your support!

REFRESH YOURSELF AT



**COURTYARD MARRIOTT
PITTSBURGH
DOWNTOWN**



**A NEW EXPERIENCE
THAT WILL INVIGORATE
THE MIND AND RELAX THE
BODY**



**945 Penn Avenue
Pittsburgh, PA 15222
Phone: 412-434-5551
Fax: 412-434-5552**

www.courtyardpittsburghdowntown.com



GROUPS SAVE Dramatically!

Disney's The Little Mermaid Theater Parties

- | | | | |
|-------------------------------|---------------------------------|-------------------------------------|------------------------------------|
| Abruzzi Group | Ferrari Group | Majcher Group | Taylor Group |
| Adams Group | Finnegan Group | McCloskey Group | Taylor's Birthday Celebration |
| Aiello Group | Fitzgerald Group | McCue Group | Thomas Group |
| Albert Group | Ford Manor Group | McDade Group | Tickets for Kids |
| Alejandro Group | Fraser Group | McGuire Family | Trinity United |
| Anderson Coach & Travel | Gaillot Group | McIntyre Group | Methodist Church |
| Artman Elementary | Gailei Group | Meredith Group | Uniglobe Ohio Valley Travel |
| Aubele Group | Games Group | Miller Group | United High School |
| Baker Group | Gannon Group | Moder Group | Urrea Group |
| Barriel YMCA | Gefsky Group | Moms' Club | USPS Social & Recreation Committee |
| Summer Camp | Greenbank Group | Mon Valley YMCA | Vtipil Group |
| Barringer Group | Hamamatsu | Montz Group | WCA Orange Division |
| Batavia Group | Headland Group | North Hills Christian Homeschoolers | Wenger Group |
| Bilcha Group | Hershberger Group | Olshanski Group | Wiskeman Group |
| Binkoski Group | Highmark Blue Cross Blue Shield | Out of the Blue Retirees | Young Group |
| Bitzer Group | Hilko Group | Parker Family | |
| Blacklick Valley Theatre Club | Hilte Family | Pittsburgh Ballet Theater School | Girl Scouts: |
| Blank Group | Hinnebusch Group | Pittsburgh Society | Puskar Girl Scouts |
| Bogler Group | Hoak Group | Postufka Group | Troop 51323 & Troop 50312 |
| Briceland Group | Homerosky Group | Princess Sophia & Friends | Troop 1529 |
| Bruzzese Group | Hribal Group | Pucci Group | Troops 20012 & 20537 |
| Budget Charters | Hughes Group | Quest Coach | Troop 20067 |
| Campbell Bus & Tours | Indiana Regional Medical Center | Rain Day Scholarship, Inc. | Troop 20474 |
| Chris's Friends | James Group | Rittle group | Troop 20474 |
| CMU - Summer Events Program | Jones Group | Robin's Family | Troop 20545 |
| CMU Pre-College Program | Just Us Kids | Robinson Group | Troop 23062 |
| Condron Group | Karen Welch & Friends | Rodgers Group | Troop 24126 |
| Corona Group | Kaufman Group | Rosenberger Group | Troops 26448 & 26454 |
| Cox Group | Kings School Kids | Rosselle Group | Troop 26797 |
| Cramer Group | Kirk Group | Saffer Group | Troop 50112 |
| Crosby Group | Klein Group | Salusky Group | Troop 50209 |
| Cunningham Group | Knoch Group | Scharding Group | Troop 50649 |
| Cygnarowicz Group | Komorski Group | Scheller Group | Troop 51454 |
| Dattilo Group | Koon Group | Sciulli Group | Troop 51668 |
| Daugherty Group | Kulka Group | Sell Group | Troop 52566 |
| DiGioia Group | Kym King & Friends | Seranko Group | Troop 53641 |
| DiStazio Group | Laurie Julius Family | Shoub Group | Troop 53681 |
| Dolney Group | Lawry Group | Shriner Group | Troop 54355 |
| Dowd Family | Lending Hearts | Sieger Group | Troop 55035 |
| Dubyak Group | Leshar Family | Simms Group | Troop 55133 |
| Emerson Process Management | Lewis Group | Simon Group | Troop 55286 |
| Faessel Group | Liao Group | Stahr Group | Troop 56115 |
| Faight Group | Lu Group | Stephenson Group | Troop 56153 |
| Faingnaert Group | Lucy Group | Stewart Group | |
| Falbo Group | Lytle Group | Stipetich Group | |
| | Machajweski Group | Superior Group | |
| | Mackenzie Group | | |

Groups of 10+
412-325-1582 Groups@pittsburghCLO.org



Pittsburgh CLO Staff

Van Kaplan, Executive Producer

ADMINISTRATION

Joel AmbroseAssistant Customer Service Manager
 Kristin Archbold.....Communications Specialist
 Julianne Avolio..... Group Sales Coordinator
 Stephanie Barletto Graphic/Web Designer
 Laura BarryManager of Individual Giving
 Lori Berger..... Associate Producing Director
 Maureen Ciampaglia.....Development Coordinator
 Wynne Fedele Director of Development
 Charlie Foukes Office Manager
 Talon GodinGraphic/Web Design Assistant
 Ellen Granger..... Ticket Manager
 Aja Jones PR/Marketing Manager
 Anne Leonard.....Accounting Assistant
 R. James Mercer.....General Manager
 Cindy Opatick..... Associate Producer
 Elizabeth RobertsAssistant to the Executive Producer
 Aaron Tindall.....Subscription Associate
 Andrew Watson.....Merchandising Manager & Special Events Coordinator
 Kristin Welch..... Group Sales Coordinator
 Cheryl Young Assistant Ticket Manager
 Monica Zyra.....Business Manager

CLO ACADEMY

Michael J. CerchiaroEducation Programs Manager
 Kelsey Deck Admissions Coordinator
 Seth LaidlawReceptionist
 Kiesha LalamaEducation Director
 Patty MaloneyPrincipal
 Susan Pettigrew Education & Outreach Scholarship Coordinator

CONSTRUCTION CENTER

Michael Bannias.....Assistant Foreman
 Robert Baronick.....Key Carpenter
 Charles Eccles.....Key Carpenter
 John R. Edkins Production Technical Supervisor
 Adolf Hundertmark Foreman
 Jeffrey Husser Propman
 Brent PeelorKey Carpenter
 Brittany StevensScenic Artist
 George Stevens.....Scenic Artist
 Michele Sullivan..... Office Manager
 Leigh Taylor Charge Scenic

PRODUCTION

Jamie Adams Assistant Company Manager
 Craig BarnaMusic Director
 John BurklandAssistant Lighting Design
 Glenn Casale Director
 Amy Clark Costume Design
 Stephen Cowles Assistant Scenic Design

Sherry Deberson..... Hair Supervisor
 Will Dennis Production Electrician
 Kenneth Foy..... Scenic Design
 Colin Freeman Associate Music Director
 Randy Hansen.....Soundscape Adaptation
 J. Eric Harriz Assistant Scenic Design
 Michael HeitzmanAssistant Director
 Christopher EvansProduction Sound
 Mark Koss Costume Design
 Mick Lohrer Production Carpenter
 Leah J. Loukas Hair & Wig Design
 John MacInnis..... Choreographer
 Tim Mackay Foy Flying Supervisor
 Ryan McAlpine..... Foy Flying Operator
 Charlie Morrison.....Lighting Design
 Frank OstrowskiOrchestra Contractor
 Jeffrey Rodriguez*Assistant Stage Manager
 Timothy Rogers..... Moving Light Programmer
 Paul RubinFlying Sequence Choreographer
 Ana Marie A. Salamat..... Makeup Design
 Megan Schneid*Assistant Stage Manager
 Kathie Sullivan Wardrobe Mistress
 Kim Vernace* Production Stage Manager
 Sean West.....Production Manager

Scenery provided by Adirondack Studios
 Backdrop construction and painting by Michael Hagen Inc.
 Backdrop printing by Big Image System
 Puppet construction by Paper Mâché Monkey
 Costume modification and custom fabrication by Paper Mill Playhouse Costume Shop. Draper: Bethany Itterly
 Additional costumes by John Kristiansen New York Inc.
 Costume crafts and paint by Juliann Kroboth
 Electronic music design and programming by Synthlink LLC, Jim Harp
 Rehearsed at the New 42nd Street Studios

STUDENT STAFF INTERNS

Alexandrea BittleMarketing & Public Relations
 Martina Caruso Development
 Antonio Corona.....Production Management
 Samantha Crawford..... Costume Coordination
 Breanna Deutsch..... Hair Design
 Anna Fatica..... Company Management
 Christina King Education & Outreach
 Annie Maines Cabaret Theater
 Emily Perri Video Direction
 Kimberly RobertsMarketing & Public Relations
 Christine SajewskiSpecial Events/Administrative
 Amanda Slowey..... Education & Outreach
 Rebecca Stoll Sound Design



The Director & Choreographer are members of the Stage Directors and Choreographers Society, a national theatrical labor union.



United Scenic Artists represents the designers and scenic painters for the American Theatre.



Backstage and Front of the House Employees are represented by the International Alliance of Theatrical Stage Employees (or I.A.T.S.E.).



The actors and stage managers employed in this production are members of Actors' Equity Association, the union of professional actors and stage managers in the United States.



The musicians employed in this production are members of the American Federation of Musicians.



Pittsburgh CLO received state arts funding support through a grant from the Pennsylvania Council on the Arts, a state agency administering an annual state appropriation for grants to the arts and federal funding from the National Endowment for the Arts.



The Allegheny Regional Asset District, a county agency created to support and finance regional assets, including libraries, parks, cultural groups, sports and civic facilities, and to distribute tax relief to the 128 municipalities of Allegheny County.



Allegheny Regional Asset District



A great nation deserves great art.

The National Endowment for the Arts is a public agency dedicated to supporting excellence in the arts, both new and established; bringing the arts to all Americans; and providing leadership in arts education. Established by Congress in 1965 as an independent agency of the federal government, the Endowment is the nation's largest annual funder of the arts, bringing great art to all 50 states, including rural areas, inner cities, and military bases.



NATIONAL ALLIANCE for MUSICAL THEATRE



STRATEGIC TECHNOLOGY PARTNER

OF THE

PITTSBURGH CLO!

An MSP Alliance accredited Managed Service Provider and MSPmentor Top Managed IT Service Provider, pioneering Managed Information Technology Solutions for over a decade.



Pittsburgh • Erie • India

www.enkompas.com



*Members of the Actors' Equity Association, the union of professional actors and stage managers in the United States



Benedum Center Directory

Check Rooms

Coin-operated lockers are located on the Promenade and the Mezzanine Levels.

Emergency Calls

Refer emergency calls to the Benedum Center Security desk at 412-456-2610. Please turn off all cell phones, pagers, PDAs, and other digital devices during the performance and notify your contacts of the emergency number.

Elevator

Located off the Grand Lobby serving all levels of the Center.

Fire Exits

Located at all levels and clearly marked. Use ONLY in case of emergency.

Lost and Found

Call Benedum Center Lost and Found Line at 412-456-2604.

Refreshments

Bars are located on the Gallery and Promenade Levels, as well as the Grand Lobby. Drinks may be purchased prior to performances and during intermission.

Rest Rooms

Lounges for Ladies and Gentlemen are located on the Gallery, Promenade and Mezzanine Levels. Rest rooms for persons with disabilities are located on the Grand Lobby Level.

Smoking

Smoking is not permitted in the theater.

Stage Area

Limited to performers, staff and authorized visitors.

Volunteering

If you are interested in our Volunteer Program or any of the volunteering opportunities within the Pittsburgh Cultural Trust, contact Stacy at 412-456-2601.

Accommodations for Persons with Disabilities

- Wheelchairs are available in the main floor lobby for transition from entrance to seat location. Notice should be given at time of ticket purchase if wheelchair or disabled patron location is required.
- Rest rooms with accessible features are located in the Grand Lobby.
- Guide dogs gladly accommodated. Please inquire at the Box Office when buying tickets.
- Elevator in Grand Lobby serves all levels of the Center.
- Infrared hearing devices are available in the Guest Service Center.
- Large print and braille programs are available in the Guest Service Center.

The Box Office at Theater Square

Purchase tickets to all Cultural District performances, regardless of venue or presenting organization at the Box Office at Theater Square. Monday through Saturday, 9am to 9pm; Sunday, Noon to 6pm. For more information, visit www.pgharts.org. The Benedum Center Box Office will be open only on performance days, two hours before curtain time through intermission.

Information and Ticket Charge Number

MasterCard, Visa, Discover and American Express are accepted. TicketCharge operates Monday through Friday, 9am to 6pm; and Saturday and Sunday 12pm to 4pm. Orders received one week in advance will be held for pick-up at the Box Office. The Benedum Center Box Office assesses a \$2.00 per ticket charge for reissuing lost or forgotten tickets. Call 412-456-6666.

Benedum Staff

Vice President OperationsGene Ciavarra
 Operations Manager..... Jacob Bacharach
 Theater Services Director.....K. Susan Sternberger
 Event Services Manager..... Stacy Bartlebaugh-Gmys
 Director of Production Berne Bloom
 Production Manager..... Diane Hines
 Associate Production Manager..... Bryan Briggs
 Stage Technicians Will Dennis, Christopher Evans,
 Mick Lohrer
 Chief Engineer Dennis Curry
 EngineersRobert Flowers, Brett Melisko, Rick Jordan
 Box Office.....Ron Salera, James Meigel,
 Andrew Stowell, Luke Doyle
 Food and Beverage Services:..... Danielle Wojtowicz

Children's Policy

Regardless of age, all patrons must have a ticket. Children under the age of 3 years will not be admitted to the Benedum Center, Byham Theater or Cabaret at Theater Square. All children must be seated with an adult. Any person disrupting a performance or inhibiting the enjoyment of an event for patrons may be removed from the theater without refund.

Make the Most of this Performance

When you attend Pittsburgh CLO performances, please be sure to have sufficient time for travel, parking and construction delays. Latecomers and anyone leaving the theater during the performance will be held in the lobby until a suitable break in the program. Parents, please be considerate of the performers, as well as your fellow audience members. Kindly remove restless children from the theater. Your attentiveness to these concerns is greatly appreciated and will enhance everyone's enjoyment of Pittsburgh CLO performances.

Please turn off all cell phones and electronic devices during the show.

ENJOY FINE DINING WITH
**AWARD WINNING
 CHEF KEVIN WATSON**
 & FIRST CLASS AMENITIES
 AT PITTSBURGH'S
 PREMIERE DINING &
 SOCIAL DESTINATION

BRING IN YOUR
**PITTSBURGH CLO
 TICKET STUB**
 AND RECEIVE A
 COMPLIMENTARY
 APPETIZER

OFFER EXPIRES ON JULY 26, 2013

SAVOY

MON, WED THRU SAT | 5PM TO 2AM
 SUNDAY BRUNCH | 11AM TO 3 PM

CALL NOW FOR RESERVATIONS
 2623 PENN AVENUE | 412-281-0660 | SAVOYPGH.COM



OYSTER PERPETUAL EXPLORER II

ORR'S JEWELERS
rocks.

5857 Forbes Avenue
Pittsburgh PA 15217
412-421-6777

532 Beaver Street
Sewickley PA 15143
412-741-8080


ROLEX