



Pittsburgh
CLO

CELEBRATING MUSICAL THEATER

42ND STREET



Cast of Pittsburgh CLO's 42nd Street | Photo: Matt Polk



The Pittsburgh Civic Light Opera Association

Share big news with friends.
Share Highmark ID card with doctor.
Keep feet up.



Use Virtual ID Card to send your Highmark card directly to your provider. Explore this and other powerful new tools built to save you time and money.

HighmarkHealthTools.com



Highmark Blue Cross Blue Shield is an Independent Licensee of the Blue Cross and Blue Shield Association. Subject to the terms of your benefit plan.

OFFICERS



Joseph C. Guyaux
Chairman of the Board



William M. Lambert
President

Honorary Chairman of the Board
Julie Andrews

Chairman of the Board
Joseph C. Guyaux

President
William M. Lambert

Vice President/CLO Ambassadors
Frederick C. Leech

Vice Presidents/Audit
Timothy K. Zimmerman
Todd C. Moules

Vice Presidents/Budget & Finance
Timothy K. Zimmerman
John C. Williams, Jr.

Vice President/Cabaret Theater
Daniel I. Booker

Vice President/
Construction Center & Facilities
Floyd R. Ganassi

Vice Presidents/Development
Tony Bucci
Mark J. Minnaugh
Ronald L. Violi

Vice Presidents/
Education & Outreach
Christine M. Kobus
Gary R. Truitt

Vice Presidents/Human Resources
Todd C. Moules
Charlene Petrelli

Vice Presidents/
Long Range Planning
Michael E. Bleier
Alvaro Garcia-Tunon

Vice Presidents/Marketing
Michael F. Walsh
Richard S. Hamilton

Vice Presidents/New Works
Development & Funding
John C. Williams, Jr.
Mark J. Minnaugh

Vice Presidents/Nominating
Scott F. Neill
John E. Kosar

Vice Presidents/Production
Helen Hanna Casey
Peter J. Germain

Vice President/Special Events
Laurie M. Mushinsky

Vice Presidents
G. Reynolds Clark
James R. Kane

Secretary
Johanna G. O'Loughlin

Treasurer
Edward T. Karlovich

Executive Director Emeritus
Charles Gray

Corporate Counsel
James M. Doerfler

Chairmen of the Board Emeritus
William J. Copeland
George A. Davidson, Jr.
James E. Rohr

Daniel I. Booker
Louis D. Astorino

Executive Producer
Van Kaplan

DIRECTORS

Neil H. Alexander
Michael E. Bleier
Walter J. Blenko, Jr.
Maryann Boehm
Daniel I. Booker
James M. Brennan
Michael J. Brunner
Tony Bucci
Helen Hanna Casey
G. Reynolds Clark
William J. Copeland
Senator Jay Costa, Jr.
Joyce C. Dailey
George A. Davidson, Jr.
Moira Davison

Stacy Leshock Dee
Eric F. Dickerson
Joseph V. DiVito, Jr.
Jane Dixon
Stephen J. Fedell
Eleanor Schano Feeny
Terri H. Fitzpatrick
Violet Gallo
Floyd R. Ganassi
Alvaro Garcia-Tunon
Peter J. Germain
Joseph C. Guyaux
Richard S. Hamilton
Paul Hennigan
James R. Kane

Edward T. Karlovich
Joseph M. Klaja
Christine M. Kobus
John E. Kosar
Rose Kutsenkow
William M. Lambert
Mark T. Latterner
Frederick C. Leech
Nicholas J. Liparulo
Richard J. Lipovich
T.H. Lyda
Patricia L. Matty
Robert C. McCartney, Esq.
Timothy P. McNulty

Mark J. Minnaugh
Mildred E. Morrison
Todd C. Moules
Laurie M. Mushinsky
Scott F. Neill
Johanna G. O'Loughlin
Christina P. O'Toole
Charlene Petrelli
Renee D. Piatt
Rita Randall
Matthew V. T. Ray
Eric A. Schaffer
Salvatore M. Sirabella
Arlene Sokolow
Merrill P. Stabile

Joann L. Tissue
The Honorable
Debra Todd
Glenn D. Todd
Gary R. Truitt
Dennis Unkovic
Ronald L. Violi
Carla J. Vrsansky
Michael F. Walsh
Doris Carson Williams
John C. Williams, Jr.
Travis E. Williams
Helen Wylie
Timothy K. Zimmerman

ADVISORY BOARD

George Ator
Joan Bogut
Roland Catarinella
Charles R. Fallon

Scotti Mulert
Rosemarie R. Parse, Ph.D.
Melvin D. Rex

George W. Rooney, Jr.
Howard J. Roughen
Michael W. Stuhldreher

Joseph C. Guyaux
Senior Vice Chairman



Welcome! We are once again pleased to serve as premier sponsor of the Pittsburgh CLO's PNC Spotlight Series.

The CLO is a Pittsburgh treasure, consistently providing our region with exceptional entertainment. And this season is no different with all-new productions of timeless classics and modern masterpieces that are sure to thrill and delight.

The PNC Spotlight Series performances and other presentations by the CLO serve as integral elements of Pittsburgh's thriving Cultural District, which attracts thousands of visitors each year and helps to define Pittsburgh as the most livable place in America. That is why PNC has established such a long and rewarding relationship with the Civic Light Opera, and it's why we're pleased to continue that relationship for another season.

Thank you for being here and supporting one of the region's rich cultural assets. Enjoy the show.

Sincerely,



Dear Friends,

I am delighted that you've joined us for the first musical of our 2013 Summer Season, *42nd Street!*

This song and dance-infused extravaganza debuted on Broadway thirty-three years ago and has been wowing audiences since. The show is based on the 1933 Warner Brothers film musical; itself based on a book by writer Bradford Ropes, a dancer on Broadway who also wrote novels and screenplays in Hollywood that exposed the steamy, behind-the-scenes aspects of show biz. With a book by Michael Stewart and Mark Bramble, lyrics by Al Dubin and music by Harry Warren, a star was born. *42nd Street* won the 1980 Tony Award® for Best Musical and ran for more than 3,000 performances, and the 2001 Broadway revival picked up the Tony Award® for Best Revival of a Musical.

As stars on stages go, here at Pittsburgh CLO we're busy nurturing our own. Thanks to your loyalty and support, we've embarked on our 67th year of creating top-notch classic and new Broadway musicals right here in our community, where novices get a leg up alongside the best in the business. In today's production we proudly feature twelve local teens as members of the *42nd Street* teen ensemble performing alongside the professional company. They are fortunate to be under the expert guidance of Director Charles Repole, Choreographer Michael Lichtefeld and Music Director Tom Helm.

If you'd like to partake in more quality musical theater with Pittsburgh CLO this summer, please call our office at 412-281-2822, and we'll help you turn today's ticket stub into a three-show or five-show season ticket package that promises something for everyone in your family. Hot ticket advisory: *Disney's The Little Mermaid* will see its Pittsburgh premiere on our stage July 9 - 21 and would be a terrific first-time musical theater experience for the little ones in your life.

Thank you for being here.

Enjoy the show!

Van Kaplan
Executive Producer

Did you know? In 1987, unknown actress Catherine Zeta-Jones catapulted to stardom after both the leading lady and understudy fell ill during the West End production of *42nd Street*. Zeta-Jones was plucked from the chorus to star as Peggy Sawyer. A star was born!

P.S. Be sure to join us across the street at the CLO Cabaret for another Pittsburgh premiere: *Side By Side By Sondheim*. I promise you'll leave humming a Stephen Sondheim tune you know, or come to know, compliments of this charming revue.



WE PICTURE YOU AS A MOTHER.



WE PICTURE YOU AS A DAUGHTER.



WE PICTURE YOU AS A SISTER.



ABOVE ALL, WE PICTURE YOU AS A WOMAN.

WHICH IS WHY WE'LL NEVER PICTURE YOU AS JUST ANOTHER PICTURE.



At Magee-Womens Imaging, you'll receive comprehensive, state-of-the-art imaging services like 3-D and digital mammography, ultrasound-guided breast biopsy, and radioactive seed localization for breast care patients. But you'll also receive something else - the expertise and compassion that come with the term "womancare," a dedication to helping women just like you that started more than a century ago. And still continues today.

1-800-649-4077 • UPMC.com/MageeSees

MAGEE-WOMENS IMAGING
WE DON'T JUST LOOK. WE SEE.

UPMC Imaging Services

Affiliated with the University of Pittsburgh School of Medicine, UPMC is ranked among the nation's top 10 hospitals by U.S. News & World Report.

May 31 - June 9, 2013
PITTSBURGH CLO
VAN KAPLAN, Executive Producer
Presents

42ND STREET

Music by **HARRY WARREN**
Lyrics by **AL DUBIN**

Book by
MICHAEL STEWART & MARK BRAMBLE

Based on the Novel by BRADFORD ROPES
Original Direction & Dances by
GOWER CHAMPION

Originally produced on Broadway by
DAVID MERRICK

The use of all songs is by arrangement with Warner Bros.,
the owner of music publishers' rights

Starring

EPHIE AARDEMA
JEFFREY HOWELL
MARA NEWBERY

GEORGE DVORSKY
CHARIS LEOS
PAUL PALMER

PATRICK RYAN SULLIVAN

TYLER HANES
LUBA MASON
GAVAN PAMER

and
JOEY FATONE
as Bert Barry

Associate Producing Director
LORI BERGER

Production Technical Supervisor
JOHN R. EDKINS

Musical Director
TOM HELM

Lighting Designer
JOHN McLAIN

Sets & props courtesy of
REAGLE MUSIC THEATRE
OF GREATER BOSTON, INC.

Costumes provided by
COSTUME WORLD
THEATRICAL

Production Stage Manager
ALICIA REECE

Production Manager
SEAN WEST

Casting by
TELSEY + COMPANY
RACHEL HOFFMAN, CSA

Choreographed by
MICHAEL LICHTFELD

Directed by
CHARLES REPOLE

42nd Street is presented by arrangement with Tams-Witmark Music Library, Inc., 560 Lexington Avenue, New York, New York 10022

The videotaping or other video or audio recording of this production is strictly prohibited.

Pittsburgh CLO is a founding member of the National Alliance for Musical Theatre,
Independent Presenters Network and The Broadway League.



“It could use some harmony.”



Cast (in order of appearance)

Andy Lee	Gavan Pamer*
Mac	Jeffrey Howell*
Oscar	Patch David*
Anytime Annie.....	Mara Newbery*
Maggie Jones	Charis Leos*
Bert Barry.....	Joey Fatone*
Billy Lawlor.....	Tyler Hanes*
Peggy Sawyer	Ephie Aardema*
Phyllis.....	Jonalyn Saxer*
Lorraine.....	Allie Pizzo*
Julian Marsh	Patrick Ryan Sullivan*
Dorothy Brock	Luba Mason*
Abner Dillon.....	Paul Palmer*
Pat Denning	George Dvorsky*
Thug	Jeffrey Howell*
Doctor.....	Jeffrey Howell*

ENSEMBLE:

Keely Beirne*, Sarah Bishop*, Sarah Blodgett*, Jesse Carrey-Beaver*, Max Clayton*, Patch David*, Rachel Fairbanks*, Lucas Fedele*, Michael Greer*, Rodney Earl Jackson Jr.*, Ashley Kasunich*, Stephanie Maloney*, Isabelle McCalla*, Connor McRory*, Rob Montgomery*, Allie Pizzo*, Jonalyn Saxer*, Andrea Weinzierl*

DANCE CAPTAIN

Mara Newbery*

**Members of the Actors' Equity Association, the union of professional actors and stage managers in the United States*

After years of saving and investing you may feel some satisfaction at having created some wealth. But eventually, having disparate financial instruments

HOW WOULD You DESCRIBE Your FINANCIAL PICTURE?

with disconnected strategies, or no strategy at all, will make you realize that you need a well-orchestrated plan. And real attention. Talk to Allegheny Financial Group. Through regular face-to-face meetings, meticulous care for every facet of your finances, and our unbiased insight, we can act as curator of your entire financial picture. Giving you something that transcends the dollar value of your assets. Peace of mind.



Visit alleghenyfinancial.com or call **866-620-6760**.
And improve your picture.

Securities offered through Allegheny Investments.
Member FINRA SIPC.



For more than 65 years, Pittsburgh CLO has been an integral part of the cultural fabric of Pittsburgh and the driving force behind live musical theater in the entire Southwestern Pennsylvania region. Pittsburgh CLO is a not-for-profit arts organization that entertains nearly 200,000 patrons each year through our Summer Season at the Benedum Center, *A Musical Christmas Carol* at the Byham and year-round at the CLO Cabaret Theater. Pittsburgh CLO's commitment to the future of the musical theater art form includes the Pittsburgh CLO Academy of Musical Theater, CLO Mini Stars, the Gene Kelly Awards for Excellence in High School Musical Theater, the National High School Musical Theater Awards, the CLO/CMU New Works Project and the Construction Center for the Arts.



Pittsburgh CLO, The Producers | Photo: Matt Polk

For more information visit pittsburghCLO.org.



Scenes & Musical Numbers

Act I

Scene 1: **42nd Street Theatre, New York City, 1933**

"Audition"..... Andy Lee, Ensemble
"Young And Healthy" Billy Lawlor, Peggy Sawyer
"Shadow Waltz" Maggie Jones, Dorothy Brock, Girls
"Shadow Waltz" (Reprise).....Dorothy

Scene 2: **The Gypsy Tea Kettle**

"Go Into Your Dance"..... Maggie, Peggy, Annie, Phyllis, Lorraine, Andy

Scene 3: **On Stage**

"You're Getting To Be A Habit With Me"Dorothy, Billy, Peggy, Ensemble

Scene 4: **Dorothy Brock's Dressing Room**

Scene 5: **On Stage**

"Getting Out Of Town"Maggie, Andy, Pat Denning, Company

Scene 6: **Arch Street Theatre, Philadelphia**

"Dames"Billy, Ensemble

Scene 7: **Regency Club and Dorothy Brock's Suite at Hotel Stratford**

"I Only Have Eyes For You"Dorothy

Scene 8: **Opening Night, Arch Street Theatre, Philadelphia**

"I Only Have Eyes For You" (Reprise)..... Billy, Girls
"We're In The Money"Annie, Phyllis, Lorraine, Peggy, Billy, Ensemble
Act One Finale Dorothy, Peggy, Full Company

There will be one fifteen-minute intermission

Act II

Scene 1: **Outside the Stage Door, Arch Street Theatre, Ten Minutes Later**

Scene 2: **Backstage, Arch Street Theatre**

"There's A Sunny Side To Every Situation"Annie, Ensemble

Scene 3: **Outside the Stage Door, Arch Street Theatre**

Scene 4: **Broad Street Station, Philadelphia**

"Lullaby Of Broadway" Julian, Full Company

Scene 5: **Backstage, 42nd Street Theatre, New York City**

"Montage" Peggy, Andy, Julian, Ensemble

Scene 6: **Peggy's Dressing Room**

"About A Quarter To Nine"Dorothy, Peggy

Scene 7: **Opening Night of Pretty Lady, 42nd Street Theatre, New York City**

OvertureOrchestra

"Shuffle Off To Buffalo"Andy, Annie, Maggie, Girls

"42nd Street" Peggy, Billy, Ensemble

Scene 8: **Backstage**

"42nd Street" (Reprise)..... Julian

LIGHTS...
MUSIC...
MAGIC!

Our Mission

That men and women may work in safety
and that they, their families
and their communities
may live in health throughout the world.



The Safety Company

www.MSAafety.com • 1-800-MSA-2222

Like us on Facebook and follow us on Twitter to connect with other musical theater fans. pittsburghCLO.org





NEUVO LATINO BISTRO WITH SEVICHE BAR



930 PENN AVENUE
www.seviche.com



WEST COAST KITCHEN AND WINE BAR



947 PENN AVENUE
www.thesonomagrille.com



NEW ORLEANS JAZZ BRASSERIE • NOUVEAU CREOLE MENU



24 MARKET SQUARE
www.nolaonthesquare.com

Who's Who

JOEY FATONE (*Bert Barry*) Former *NSYNC star and "Dancing with the Stars" contestant, Joey Fatone returns to Pittsburgh CLO after last appearing to critical acclaim as Franz Liebkind in *The Producers*. On Broadway he starred as Seymour in *Little Shop of Horrors* and as Mark Cohen in *Rent*. Fatone's countless film, television and live performance credits include: "My Family Recipe Rocks!" a cooking show on the Live Well Network that highlights the stories of homegrown cooks, NBC's "The Singing Bee," "Price is Right Live" in Las Vegas and Atlantic City, "Let's Make a Deal" for Caesars Entertainment, "Celebrity Circus" and announcer for "Family Feud" with Steve Harvey. He produced his first cable television series, "The Singing Office" for TLC and co-hosted the show alongside Melanie Brown. Additional credits include: "The Cooler," "Inkubus," "Homie Spumoni," "My Big Fat Greek Wedding," "Robot Chicken," "Jo Jo's Circus," "Higgly Town Heroes" and "Hannah Montana." Fatone and his wife, Kelly, currently reside in Los Angeles with their daughters, Briahna and Kloey. He remains actively involved with his charity, The Fatone Family Foundation, and works on various movie and television projects.

EPHIE AARDEMA (*Peggy Sawyer*) originated Lucy Honeychurch in *A Room with a View* at the Old Globe. National Tours: *Fiddler on the Roof* (Chava) and *The Sound of Music* (Liesl). Off-Broadway: *Dear Edwina* (Edwina). Regional: *Daddy Long Legs* (Jerusha) at St. Louis Rep & PCPA, *25th Annual...Spelling Bee* (Logainne) at Paper Mill Playhouse & PTC and (Olive) at Media Theatre, *Next to Normal* (Natalie), *Thoroughly Modern Millie* (Millie), HAIR (Sheila). Ephie's an international award-winning tap dancer with a Congressional Gold Medal for Outstanding Youth. She's the youngest-ever graduate of Circle in the Square Theatre School. www.EphieAardema.com

GEORGE DVORSKY (*Pat Denning*) is currently starring as El Gallo in New York's Longest Running Musical, *THE FANTASTICKS* and returns to Pittsburgh CLO for his 10th production. Broadway credits include *The Scarlet Pimpernel*, *Gentlemen Prefer Blondes*, *Passion*, *Marilyn: An American Fable* and *The Best Little Whorehouse in Texas*. He also starred as Prince Charming in the NYC Premiere of Rodgers and Hammerstein's

Cinderella at Lincoln Center. Off-Broadway: Revival of *Closer Than Ever*, *Pete 'n' Keely*, the revival of *Dames at Sea* and *And The World Goes Round*. His solo CDs, *All Through The Night*, and *In The Still Of The Night* are available on the JAY Records label. www.georgedvorsky.net

TYLER HANES (*Billy Lawlor*) Broadway: *A Chorus Line* (Larry, Original Revival Company), *Hairspray* (Link Larkin), *Sweet Charity* (Charlie), *The Frogs*, *The Boy From Oz*, *Urban Cowboy*, and *Oklahoma!* Other favorites include *On The Town* (Gabey), *All Shook Up* (Chad), *Cabaret* (Clifford Bradshaw), *Juno* (Johnny Boyle), *The Drowsy Chaperone* (Robert Martin), *The Studio* (Jackie), *Footloose* (Ren McCormick) and *Fosse* (first national tour). TV/Film: "In The Blood," "30 Rock," "Dancing With The Stars," "Phoebe in Wonderland," "One Life To Live," "Rose," "The Tony Awards®." www.tylerhanes.com

JEFFREY HOWELL (*Mac, Thug, Doctor*) was recently seen as the Captain in *The Sound of Music* (PMT); PCLC shows include *Sunset Boulevard* (DeMille), *Jesus Christ Superstar* (Annas), *Jekyll & Hyde* (Poole), *A Musical Christmas Carol* (Bob Cratchit), *Beauty and the Beast* (Cogsworth), *Bells are Ringing* (Dr. Kitchell), *Pajama Game* (Prez); other credits include *Candide* (Dr. Pangloss), *Chicago* (Billy Flynn), *Tribute to Lerner and Loewe* with Marvin Hamlisch and the PSO.

CHARIS LEOS (*Maggie Jones*) PCLC debut! Most recent roles include *Singin' in the Rain* (Dora, Dinsmore), Maltz Jupiter Theater; *Gypsy* (Electra, Cratchitt), The Fulton Theatre; *42nd Street* (Maggie), *Legally Blonde* (Paulette), Maine State Music Theater; and *Nonsense* (Sister Hubert), Northern Stage. Her numerous credits include Portland Stage, The Palace Theater, Gateway Playhouse, Dallas Theater Center, Casa Manana, Stage West, North Shore, Mountain Playhouse, The Plaza Theater, among others. CLG

LUBA MASON (*Dorothy Brock*) Broadway: *Chicago*, *Jekyll & Hyde*, Paul Simon's *The Capeman*, *How To Succeed In Business...*, Trevor Nunn's *Sunset Boulevard*, *The Will Rogers Follies* directed by Tommy Tune, played opposite legendary comedian Sid Caesar in *Sid Caesar & Co.* TV: "Person Of Interest," "Law & Order," "Raines,"

IMAGINATION UNTAMED



PNC
BROADWAY  2013-2014
ACROSS AMERICA
PITTSBURGH



Disney
PRESENTS
**THE
LION KING**
BROADWAY'S LANDMARK MUSICAL
SEPTEMBER 3-29, 2013
BENEDUM CENTER

WE WILL
**ROCK
& YOU**
THE MUSICAL QUEEN + Ben Elton
OCTOBER 29-NOVEMBER 3, 2013 BENEDUM CENTER

elf
The Broadway Musical
NOVEMBER 26-DECEMBER 1, 2013 BENEDUM CENTER

GHOST
THE MUSICAL
DECEMBER 31-JANUARY 5, 2014 HEINZ HALL

The Gershwins'
Porgy and Bess
FEBRUARY 25-MARCH 2, 2014 BENEDUM CENTER

Once
MARCH 11-16, 2014 BENEDUM CENTER

**PETER AND THE
STARCATCHER**
MAY 20-25, 2014 HEINZ HALL

Who's Who

"NYPD Blue." As a recording artist, Luba has "a voice as big and rich as a star-filled sky" (*Jazz Times*). She has released two critically-acclaimed albums: "Collage" (PS Classics) and "Krazy Love" (Sunnyside Records), debuting her impressive song-writing skills. Graduate from NYU's Tisch School of the Arts (Drama). www.lubamason.com

MARA NEWBERY (*Anytime Annie*) is honored to be returning to the PCLO stage! Credits include *A Christmas Story, the Musical* (Broadway), *On Your Toes* (New York City Center), and *Shrek the Musical* (1st Nat'l Tour). BFA University of Michigan. Love to Mom and Dad, John, Gma, JPot, CTG, and the big man upstairs. Endless thanks to Michael and Charlie for taking a chance on me at this very theatre many moons ago!

PAUL PALMER (*Abner Dillon*) returns to the Benedum stage for his 56th Pittsburgh CLO summer show, reprising the role he performed in the 2006 CLO *42nd Street* production. A veteran of 34 CLO summer seasons, Mr. Palmer last appeared as Lt. Ward and Cordell Hull in the 2012 production of *Annie*.

GAVAN PAMER (*Andy Lee*) PCLO credits include: *Joseph...*, *Carousel*, *Me and My Girl*, *My Fair Lady*, *Funny Girl*, *Crazy for You*, *Annie*, *Bye Bye Birdie* and *Jesus Christ Superstar* among others. National tours: *CATS* (Mungojerrie), *42nd Street* and *A Chorus Line*. For CLO Cabaret: *My Way* (Choreographer) and *Forever Plaid* (PSM). Gavan is the Artistic Director of Lincoln Park Performing Arts Center in Midland, PA.

PATRICK RYAN SULLIVAN (*Julian Marsh*) BROADWAY: Julian Marsh in *42nd Street*, Gaston in *Beauty and the Beast*, Various roles in *Titanic*. Regional (2013): Oberon in *Mid-Summer*, Victor in *Empty Plate...*, Serge in *Art*, Arles in *Tuna Christmas*. Favorites: Billy in *Chicago*, Sweeney in *Sweeney Todd*, Lockstock in *Urinetown*, Harold in *Music Man*, Rutledge in *1776*, Sky in *Guys and Dolls*, Billy in *Carousel*, Michael in *I Do I Do*, Henry Higgins in *Pygmalion*, Tito in *Lend Me A Tenor*, Beau in *Auntie Mame* (with Charles Busch), El Gallo in *The Fantasticks*. Television/Film: "Law and Order S.V.U.," "Pursued" (Lead in upcoming feature).

KEELY BEIRNE (*Ensemble*) is thrilled to be making her PCLO debut as a recent graduate of Penn State University! Recent Credits: *Hairspray* (Dynamite) at Merry-Go-Round Playhouse as well as *Peter Pan* (directed by Michael Lichtefeld). Thanks to the cast, crew, family, and Squad!

SARAH BISHOP (*Ensemble*) of Butler, is thrilled to be making her Pittsburgh CLO debut and is a rising junior at University of Cincinnati College-Conservatory of Music. School credits include Mrs. Phagan in *Parade*, and Ensemble in *Review Revue*, *Chess* and *Oklahoma!*

SARAH BLODGETT (*Ensemble*) is excited to be making her PCLO debut. International tour: *West Side Story*. National tour: *The Music Man*. Professional ballet: Ballet West and Ballet West II, Connecticut Ballet (soloist). B.S. in Business and Marketing, University of San Francisco.

JESSE CARREY-BEAVER (*Ensemble*) Pittsburgh CLO debut! Jesse was last seen in Pittsburgh as Gerard in the new musical *POP!* at City Theatre. Jesse graduated from Carnegie Mellon this May with a BFA in Musical Theatre. Thank you to everyone at PCLO for making this experience possible!

MAX CLAYTON (*Ensemble*) Pittsburgh CLO: *A Chorus Line*, *Annie*, *Fiddler on the Roof* and *Sunset Boulevard*. Regional: Lyric Opera of Chicago, NSMT, Music Theatre of Wichita and Palace Theatre. Max is a rising senior at CCM. For Mom, Dad, the Claytons, the Truncellitos and his sister Missy.

PATCH DAVID (*Oscar, Ensemble*) PCLO debut!!! Credits Include: National Tour of *Fiddler on the Roof*, *The Sound of Music* (Rolf u/s) and *Thoroughly...Millie* at the Paper Mill Playhouse; *Little Women* (Laurie Laurence). Thanks to family, Sammy, Richard and AVALON. Fight the "R" word!!!

RACHEL FAIRBANKS (*Ensemble*) is thrilled to be making her PCLO debut. Recent credits from North Shore Music Theatre include: *Hello, Dolly!* (s/c Irene Malloy), *Annie* (s/c Grace), *All Shook Up*, and *Bye Bye Birdie*. WE ARE!

BGMS



Comprehensive Family Law Practice: Litigation, Collaborative Law, Mediation

BUNDE GILLOTTI
MULROY & SHULTZ

WWW.BGMS-LAW.COM
412.391.4330



Who's Who

LUCAS FEDELE (*Ensemble*) is happy to return home to PCLO after appearing as the title role in last season's *Fiddler on the Roof*. Nat'l Tour: *Irving Berlin's White Christmas*. Regional: Arena Stage, Kansas City Starlight, WVPT and PMT. For Dui. lucasjfedele.com

MICHAEL GREER (*Ensemble*) was last seen in *You Say Tomato, I Say Shut Up!* at the CLO Cabaret. PCLO: *Miss Saigon*, *Full Monty*, *Les Misérables*; PMT: *Beauty & the Beast* (Gaston), *Footloose* (Willard); KC Starlight: *Jesus Christ Superstar*. BFA Musical Theater, Point Park University.

RODNEY EARL JACKSON JR. (*Ensemble*) will appear in 3 shows this summer! Recent graduate of CMU's School of Drama where he was last seen as Belize in *Angels in America* and Georg in *Spring Awakening*, directed by Tome Cousin; ecstatic for the future ahead.

ASHLEY KASUNICH (*Ensemble*) PCLO debut! Favorite regional: *The Producers*, *Cats* (Victoria), *Cabaret*, *Oklahoma!* and *Footloose*. Ashley is a Radio City Rockette and has appeared on the "Macy's Thanksgiving Day Parade" and "Project Runway," among others. BFA: Point Park University. For my family.

STEPHANIE MALONEY (*Ensemble*) was last seen at the CLO Cabaret in *The Marvelous Wonderettes* (Betty Jean). Favorite CLO credits: *Into the Woods*, *Les Misérables*, *Copacabana* & *Mame*. NYC Concerts/Readings: Lincoln Center and The Public. University of Michigan Graduate. www.stephaniemaloney.com

ISABELLE McCALLA (*Ensemble*) is thrilled to be making her debut at PCLO this summer! She will be a junior Musical Theatre major at the University of Michigan. Regional: Muny, Music Theatre of Wichita. UofM: *Crazy for You*, *Chicago*. GO BLUE!

CONNOR McRORY (*Ensemble*) is thrilled to return to Pittsburgh CLO for his second season. Past credits include *A Chorus Line*, *Fiddler on the Roof*, *Annie*, *Sunset Boulevard*, *The Who's Tommy* (PCLO). Connor is a rising junior at Penn State University. AEA Proud.

ROB MONTGOMERY (*Ensemble*) is absolutely thrilled to make his PCLO debut with the *42nd Street* Company! Rob was recently seen in *Carousel*, *Chicago*, and *Legally Blonde* at the Wagon Wheel Theatre. Proud Penn State Senior. Love to friends and family! www.rob-montgomery.net

ALLIE PIZZO (*Lorraine, Ensemble*) is ecstatic to be making her PCLO debut! Other credits include: Maggie, *A Chorus Line* (Maine State Music Theatre); Chutney, *Legally Blonde* (MSMT); Tiger Lilly, *Peter Pan*, Flaemmchen u/s, *Grand Hotel*. Love to Michael, Charlie, and the Pizzos. Namaste!

JONALYN SAXER (*Phyllis, Ensemble*) is ecstatic to be making her PCLO debut! Theatre: *Judy in A Chorus Line*, *Legally Blonde*, *42nd Street* (MSMT); *Anything Goes*, *42nd Street* (MGR Playhouse); *White Christmas* (Syracuse Stage); *Reasons To Be Pretty* (BBP). BFA Syracuse University 2014.

ANDREA WEINZIERL (*Ensemble*) is back in her hometown after performing in the National Tour of *A Chorus Line* (Director Baayork Lee). Andrea will resume as a Musical Theatre major at Point Park University in the fall. For mom & dad. www.andreaweinzierl.com

Telsey + Company:
Bernie Telsey CSA, Will Cantler CSA, David Vaccari CSA,
Bethany Knox CSA, Craig Burns CSA,
Tiffany Little Canfield CSA, Rachel Hoffman CSA,
Justin Huff CSA, Patrick Goodwin CSA, Abbie Brady-Dalton CSA,
David Morris, Cesar A. Rocha CSA, Andrew Femenella CSA,
Karyn Casl CSA, Kristina Bramhall, Conrad Woolfe, Amelia Nadler

ARE YOU 60 OR OLDER?

DO YOU HAVE TROUBLE FALLING ASLEEP

OR STAYING ASLEEP?
OR ARE YOU A GOOD SLEEPER?



The University of Pittsburgh is conducting a research study of people who have trouble sleeping as well as healthy adults who sleep well to learn more about insomnia and how it is affected by a nonmedication treatment.

To be eligible, you must be 60 or older and:

- have difficulty falling or staying asleep or feel poorly rested after sleeping
- or be a good sleeper at night and not feel sleepy during the daytime

By sharing your time and participating, you may be able to help researchers find out more about improving sleep and quality of life in later years.

Participants will be compensated for their time.

For more information, please call toll free, **1-866-647-8283** or e-mail AgeWise@upmc.edu.



University of Pittsburgh



Who's Who



JOEY FATONE



EPHIE
AARDEMA



GEORGE
DVORSKY



TYLER HANES



JEFFREY
HOWELL



CHARIS LEOS



LUBA MASON



MARA
NEWBERY



PAUL PALMER



GAVAN PAMER



PATRICK RYAN
SULLIVAN



KEELY BEIRNE



SARAH BISHOP



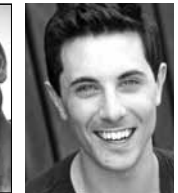
SARAH
BLODGETT



JESSE CARREY-
BEAVER



MAX CLAYTON



PATCH DAVID



RACHEL
FAIRBANKS



LUCAS FEDELE



MICHAEL
GREER



RODNEY EARL
JACKSON JR.



ASHLEY
KASUNICH



STEPHANIE
MALONEY



ISABELLE
McCALLA



CONNOR
McRORY



ROB
MONTGOMERY



ALLIE PIZZO



JONALYN
SAXER



ANDREA
WEINZIERL



Who's Who

CHARLES REPOLE (*Director*) Pittsburgh CLO: *Curtains, White Christmas, 42nd Street, Annie, Singin' in the Rain, Annie Get Your Gun, Copacabana* and *Carousel*. NYC/Broadway: *Dubarry was a Lady, Call Me Madam, Gentlemen Prefer Blondes, The Lauri Strauss Leukemia Foundation Benefit* (Carnegie Hall) and *Lyrics and Lyricists 25th Year Celebration* (92nd Street "Y"). Kennedy Center: *Where's Charley?* Broadway performance credits: *Doubles, Whoopee!* and *Very Good Eddie* (Tony® nomination). Mr. Repole is Chairman of the Drama, Theatre and Dance Department at Queens College.

MICHAEL LICHTFELD (*Choreographer*) has choreographed six Broadway musicals, nine off-Broadway musicals and eleven seasons at The Stratford Festival, has been nominated for the Drama Desk Award, three Outer Critics Awards and the LA Ovation Award.

TOM HELM (*Music Director*) happily returns for his 18th Pittsburgh CLO season, having conducted more than 60 productions. His other adventures include conducting the Broadway productions of the *Brigadoon* revival, *Cats, Me and My Girl, Les Misérables* and *Souvenir*. Tom was musical director of the first national tour of *Cats, Radio City's 5-6-7-8 Dance!*, and television productions of *Mornings at Seven* and *Crazy For You*. Tom supervised touring productions of *Me and My Girl, Dora the Explorer, Diego Live, Rugrats* and *Madagascar*. He has also been music director of some 50 Paper Mill Playhouse productions, among other regional and national theatres.

JOHN McLAIN (*Lighting Designer*) Credits: major musicals, ballet, opera, Las Vegas, Broadway, road shows, ice shows, and many international productions. Coming to Pittsburgh CLO in 1988 with *The Wizard of Oz*, this will be his 25th season here. He is greatly appreciative of his associates Jeffrey Small and Sydney Carter - without whom he could not create the lighting for PCLO productions. He lives in New York City and Connecticut.

ALICIA REECE (*Production Stage Manager*) A Pittsburgh CLO Assistant Stage Manager for the past two seasons, "Lish" is honored to now lead the SM team. In the "off-seasons," she is the Stage Manager for the Pittsburgh Ballet Theatre. Originally from Illinois, and having worked extensively in regional theatre, Off-Broadway, and international touring, she is proud to now call Pittsburgh home. Love to "Jacquie."

SEAN WEST (*Production Manager*) is happy to be returning to Pittsburgh CLO for his tenth season as production manager. He just finished the season with the Pittsburgh Opera as a production carpenter, and the year as a theater supervisor for Carnegie Mellon University. He is glad to be back and looking forward to another fun and exciting season.

JEFFREY SMALL (*Associate Lighting Designer*) is a NYC-based designer returning to CLO for his fourth summer season. Pittsburgh credits include: Pittsburgh Public Theater, City Theatre Company, Pittsburgh Opera. Regional credits include: Westport Country Playhouse, Williamstown Theatre Festival, Berkshire Theatre Festival, Paper Mill Playhouse, The Public Theater, Goodspeed Musicals, Long Wharf, Cincinnati Playhouse in the Park. Jeffrey also has the privilege of working in the production departments of the Macy's Thanksgiving Day Parade and New Year's Eve in Times Square. www.jeffreysmall.com

TELSEY + COMPANY (*Casting*). Broadway/Tours: *First Date, Motown, Kinky Boots, Annie, Newsies, Spider-Man Turn Off the Dark, Rock of Ages, Wicked, Evita, Priscilla Queen of the Desert, Sister Act, Million Dollar Quartet*. Off-Broadway: *Nobody Loves You* (2nd Stage), Atlantic, MCC, Signature. Regional: La Jolla, Paper Mill. Film: *The Odd Life of Timothy Green, Friends with Kids, Joyful Noise, Margin Call, Sex and the City 1 & 2, I Love You Phillip Morris, Rachel Getting Married, Dan in Real Life, Across the Universe*. TV: "Smash," "The Big C," commercials. www.telseyandco.com

Before or After the show.



CITY SALS DELI

Gourmet Sandwiches, Fresh Salads, Incredible Desserts
Cappuccino / Espresso, Exceptional Wines & Distinctive Beers

Located next door to the Benedum Center

245 Seventh Street
 412.434.1100
www.Salscitydeli.com

OPERA THEATER
SUMMER FEST
 — July 6-21 —



UP CLOSE. PASSIONATE.
 At the exquisite Twentieth Century Club
 4201 Bigelow Blvd., Oakland, 15213

OPERA • MUSICALS • FUN
 Mainstage tickets start at \$20!
 Nights Caps Mini-Operas \$10

First time at the opera?
 See you on the red carpet!
 Text NEWBIE to 67463
 or call 412-326-9687 for deals!



Photo by Patti Brahim, Candido 2012

412-326-9687
otsummerfest.org



#myfirstopera



PROUD TO SUPPORT

THE REGION'S PERFORMING ARTS.



ASSURANCE AND TAX ADVISORS
BUSINESS ADVISORS
CORPORATE FINANCE ADVISORS
TECHNOLOGY ADVISORS
WEALTH MANAGEMENT ADVISORS
www.schneiderdowns.com



INSIGHT ■ INNOVATION ■ EXPERIENCE

**FLY NONSTOP
TO YOUR NEXT MEETING**

150 Daily Nonstops to
Top Business Cities.

FlyPittsburgh.com
Pittsburgh International Airport

Who's Who

HARRY WARREN (*Music*) (1893-1981) Harry Warren was the first major American songwriter to write primarily for film. He was nominated for the Academy Award for Best Song 11 times and won three Oscars®. He has written over 800 songs and his songs have been featured in over 300 films. In addition to *42nd Street*, Mr. Warren wrote the music for *The Laugh Parade*, *Shangri-La* and *Dancin'*.

AL DUBIN (*Lyrics*) (1891-1945) Al Dubin wrote the lyrics for many Broadway shows including *White Lights*, *Streets of Paris*, *Keep Off the Grass*, *Sugar Babies* and *42nd Street*. In 1970 he was inducted into the Songwriters Hall of Fame. In collaboration with Harry Warren, he wrote 60 hit songs for Warner Brothers.

MARK BRAMBLE (*Book*) has written the books for *The Three Musketeers* revival, *Barnum* and collaborated with Michael Stewart for *The Grand Tour*. He has been nominated for the Tony Awards® for Best Book of a Musical for *Barnum*, and Tony Award® for Best Direction of a Musical (*42nd Street* revival). His and Michael Stewart's work on *42nd Street* earned them a Tony Award® nomination for Best Book of a Musical as well.

MICHAEL STEWART (*Book*) wrote the books for *Bye Bye Birdie*, *Hello, Dolly!*, *Harrigan 'n Hart*, *Bring Back Birdie*, *I Love My Wife*, *Mack & Mabel*, *Seesaw* and *Razzle Dazzle*. He was nominated for several Tony Awards®, and he won Best Author (Musical) for *Hello, Dolly!* His and Mark Bramble's work on *42nd Street* earned them a Tony Award® nomination for Best Book of a Musical as well.

Teen Ensemble



Top Row - Maria Scherer, Tressa Holodnik, Christine Brown, Heidi Murr, Rachael Beaver, Gabriela Zuckero
Bottom Row - Annette Elphinstone, Sidney Popielarchek, Stefanee Sybo, Stephanie Franciscus, Nicole Conrad, Kayla Kozlowski



Who's Who

PITTSBURGH CLO has been a driving force behind the preservation, creation and promotion of live musical theater since 1946. As one of the largest regional musical theater organizations in the country, it is fortunate for the yearly support of nearly 200,000 audience members. In addition to producing fresh new productions of Broadway classics, the not-for-profit's mission is to develop new works and showcase emerging talent, and has been credited with launching the careers of numerous artists such as Rob Marshall, Kathleen Marshall, Rob Ashford, Bernadette Peters, Shirley Jones and Susan Schulman. The organization's dedication to musical theater extends beyond its six-show summer season at the Benedum Center to year-round programming at its 250-seat CLO Cabaret Theater, which recently saw the Pittsburgh premiere of *You Say Tomato, I Say Shut Up!* Its extensive education efforts include its CLO college intern program, New Horizons, and in-school programs such as the Gallery of Heroes and Creative Vision. Other ongoing initiatives include the Pittsburgh CLO Academy of Musical Theater, CLO Mini Stars, the Construction Center for the Arts, The Richard Rodgers Award, and the acclaimed Gene Kelly Awards for Excellence in High School Musical Theater. The organization also founded and co-produces the National High School Musical Theater Awards. To further its mission to grow the art form, it has invested in and co-produced musicals currently on Broadway: *Rodgers & Hammerstein's Cinderella*, *Matilda* and *Kinky Boots*. Additionally: *Evita*, *The Addams Family*, *Come Fly Away*, *Catch Me If You Can*, *9 to 5: The Musical*, *Legally Blonde The Musical*, *Curtains*, *Monty Python's SPAMALOT*, *Thoroughly Modern Millie*, *Bombay Dreams*, *Oprah Winfrey's The Color Purple*, *Flower Drum Song*, *Chita Rivera: The Dancer's Life* and Deaf West's production of *Big River*. Pittsburgh CLO is a founding partner of 5 Cent Productions/Elephant Eye Theatricals, a producing consortium devoted to new musicals such as *The Addams Family* and the upcoming *An American in Paris*. In 2007, the organization assisted Disney Theatrical Productions in launching the

National Tour of *Disney's High School Musical*. Pittsburgh CLO is the subject of a 2007 film starring Jeff Goldblum titled "PITTSBURGH." www.pittsburghCLO.org.

VAN KAPLAN (*Executive Producer*) joined Pittsburgh



CLO in 1997. In addition to overseeing the organization's year-round producing and programming efforts, he has produced or co-produced the Broadway productions of *Evita*, *Catch Me If You Can*,

Come Fly Away, *The Addams Family* and the upcoming production of *An American in Paris*. He has also produced touring productions of *Camelot*, *Joseph and the Amazing Technicolor Dreamcoat*, *Phantom*, *Singin' in the Rain*, *Chess*, *Grand Hotel*, *City of Angels*, *Evita*, *Brigadoon* and *Nunsense II*. His directorial credits include *Guys and Dolls* with Victoria Clark, *She Loves Me*, *West Side Story* with Max Von Essen and Ali Ewoldt, *Kopit & Yeston's Phantom*, *On the Town*, *Sweeney Todd* with Candy Buckley, *South Pacific* with Cathy Rigby, *Nunsense*, *Shear Madness*, *Ruthless!*, *Guys and Dolls* with Georgia Engel and the regional premiere of Andrew Bovell's *Speaking in Tongues* at Pittsburgh's Quantum Theater. Since 2009 he has directed The Jimmy™ Awards at the Minskoff Theatre on Broadway. He has also directed original shows for Caesars Entertainment at the Rio, Paris and Bally's Hotels in Las Vegas. He has consulted for the National Endowment for the Arts, is a former Theatre Panel chair for the Texas Commission on the Arts, and has served as adjunct professor for Carnegie Mellon's Masters of Arts Management Program. He is on the Board of The Broadway League, serves on the Investment Committee of the Independent Presenters Network (IPN) and is past president of The National Alliance for Musical Theatre (NAMT). He is president of the National High School Musical Theater Awards - also known as The Jimmy™ Awards, the subject of a 3-part documentary series that aired nationally on PBS in September. He has been a Tony Awards® voter for more than 20 years.

LIVE @ LINCOLN PARK PERFORMING ARTS CENTER JUST 15 MILES FROM THE PGH AIRPORT

My Way
A Musical Tribute to *Grand Sinatra*

Also featuring Kenzie Palmer and Isaac Palmer

JUNE 21-23, 28-30

LPPACENTER.ORG
MIDLAND, PA **CALL THE BOX OFFICE 724.576-4644**

Free Parking • Easy Access • Great Seats

OVER HERE, THE SHOW STARTS WHEN THE LIGHTS COME UP.

STATION SQUARE
LEGENDARY ENTERTAINMENT

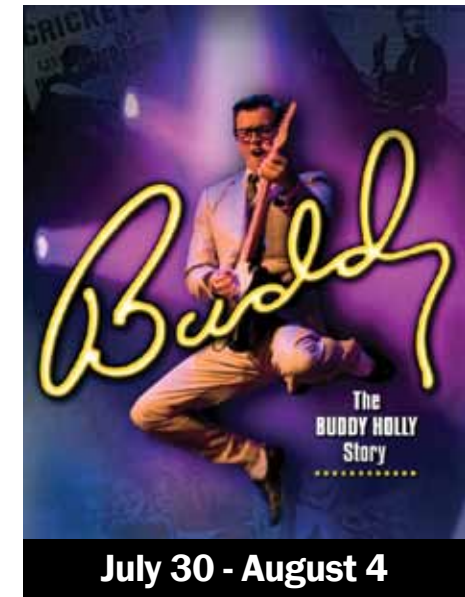
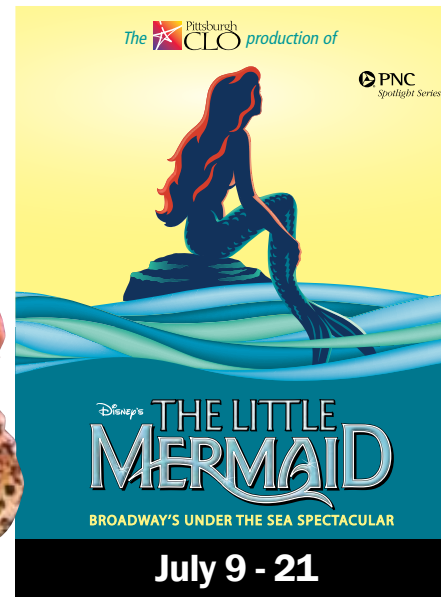
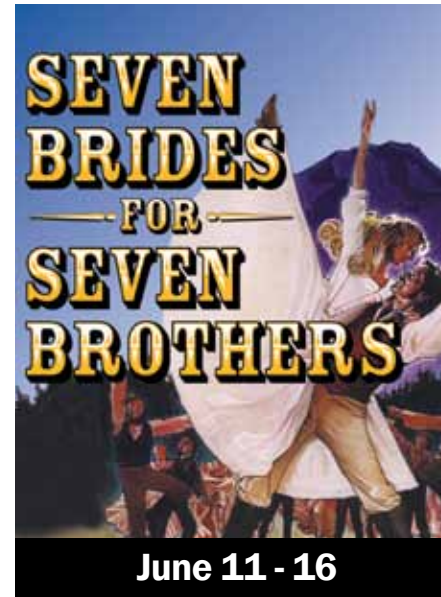
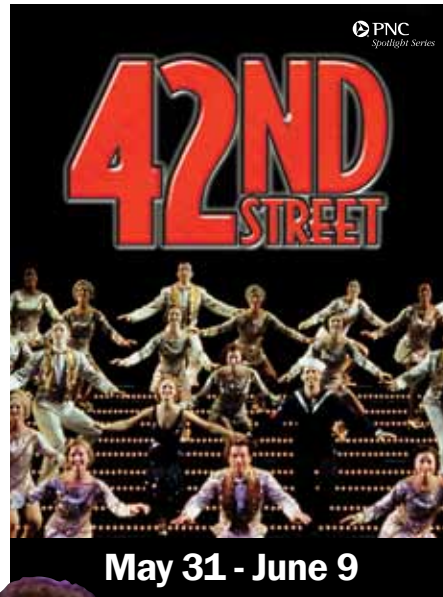
DINING ENTERTAINMENT SPECIALTIES ATTRACTIONS

STATIONSQUARE.COM

Turn your Ticket into a Season Ticket Package!

Add 2 or more shows for as little as **\$65**

Order Today!
412-281-2822
pittsburghCLO.org



Carnegie Mellon University

Academically enriching programs for K-12 students

Great programs for young minds!

Architecture Explorations

Offering Architecture Saturday, Summer, and School Programs, Grades K-12

Contact Us:
kellyons@cmu.edu
(412) 268-1541

C-MITES

Fun Classes for Bright Kids!

Offering Weekend & Summer Programs, Grades K - 9

Contact Us:
(412) 268-1629, ext 1
www.cmities.org

www.cmu.edu



Architecture Explorations



C-MITES

WE'LL USHER PEOPLE RIGHT TO

YOUR BRAND

YOUR BRAND AND THE PITTSBURGH CULTURAL DISTRICT

IT'S GOOD FOR BUSINESS.



Each year, the Cultural District attracts over two million people for performances, exhibitions and events. You can target key demographics through a variety of channels.

Call Elaine A. Nucci at 412-471-6087 or email nucci@culturaldistrict.org to learn about the ways the Cultural District can help your business.



You don't have to stay here to savor here.

Before the show, experience cuisine like never before at the Terrace Room, Pittsburgh's premiere historic dining room. Enjoy world-class fare and warm, professional service in an atmosphere of understated elegance. Have a prohibition-style cocktail after the show at the new Speakeasy Social Lounge. No passwords required.

Pre-theater specials available. Sunday brunch and complimentary valet parking. For reservations, call 412-553-5253.



OMNI HOTELS & RESORTS
william penn | pittsburgh

530 William Penn Place • Pittsburgh, Pennsylvania 15219
412-281-7100 • omnihotels.com/pittsburgh



**FOOD, FUN &
LOTS OF LAUGHS!**

THE CABARET AT THEATER SQUARE IS A PROJECT OF THE PITTSBURGH CULTURAL TRUST

SIDE by SIDE
by **SONDHEIM**
A MUSICAL CELEBRATION

"Splendid!
Who could ask for anything more?"
- *The Washington Post*



Now Playing!

412-456-6666

GROUPS 412-325-1582 CLOCabaret.com
Evenings 7:30pm | Matinees 2:00pm



**DEFENDING THE
CAVEMAN**

Broadway's Smash Comedy About the Sexes
Written by Rob Becker

Sept 5 - Oct 20

Adult Content



Up Next!

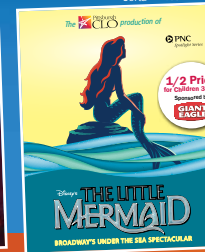


**SEVEN
BRIDES
FOR
SEVEN
BROTHERS**

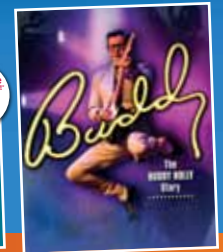
June 11-16



June 21 - 30



July 9 - 21



July 30 - August 4

412-456-6666

pittsburghCLO.org
GROUPS 412-325-1582

All shows at the Benedum Center

CLO SEASON SPONSORS: Pittsburgh Post-Gazette



Gene Kelly Awards

Recognizes Local High School Stars

The Gene Kelly Awards premiered in 1991 and continues to make a lasting impact on Pittsburgh's thriving Cultural District. The program honors the beloved performer Gene Kelly, a Pittsburgh native and University of Pittsburgh alumnus known for his roles in films such as *Singin' in the Rain*, *An American in Paris* and *On the Town*. In Kelly's memory, high school students from districts across Allegheny County are honored each year with their own Tony Awards®-style red carpet event at the Benedum Center.

On Saturday, May 25, cheering students from 29 schools filled every seat of the Benedum Center to support their classmates and high schools during the **Gene Kelly Awards for Excellence in High School Musical Theater**.

Now in its 23rd season, the Gene Kelly Awards highlights the importance of arts education in high schools and recognizes the talents of students with a passion for performing arts. Schools are nominated each year for their musical productions in any of thirteen categories, with three varying budget levels. For one night each spring, more than 3,000 high school students, parents, teachers, directors and volunteers gather together to see their months of hard work and dedication to musical theater come to fruition on the Benedum's grand stage. The night of the

Gene Kelly Awards includes spectacular performances from all of the Best Musical, Best Actor and Best Actress nominees and an exciting grand finale comprised of participants from each nominated school. Since the program's inception, more than 30 similar programs have been created across the country.

This year's Best Actor and Best Actress winners will have a once-in-a-lifetime opportunity to represent Pittsburgh CLO's Gene Kelly Awards at **The National High School Musical Theater Awards** in New York City, where they will spend a week taking master classes, rehearsing a Broadway show and attending private coaching sessions. This week of intense training and total immersion in the arts will culminate in a final awards ceremony on July 1 at the Minskoff Theatre on Broadway.

This year, Pittsburgh CLO helped high school seniors further their education with more than \$82,500 in scholarships presented at the Gene Kelly Awards. These scholarships are made possible through the generous donations of the Pittsburgh CLO Ambassadors and CLO Guild; in addition, two students received scholarships to Point Park University's Conservatory of Performing Arts for Musical Theater. Earlier in the evening, Pittsburgh CLO presented two Distinguished Alumni Awards, which recognize past Gene Kelly Awards participants who have gone on to successful careers in the arts as well as other industries. These awards were presented to musical theater veteran and author, Tim Federle, and Director of Government Relations for the Pittsburgh Penguins, Abass B. Kamara.

The Gene Kelly Awards are co-presented by the University of Pittsburgh, with additional support provided by Highmark Blue Cross Blue Shield, PNC Bank, Virginia S. Nicklas and the Pittsburgh CLO Ambassadors. Deloitte Consulting, LLP is the official auditor for the Gene Kelly Awards. For a complete list of the 2013 winners, please visit pittsburghCLO.org.



2012 Jimmy™ Awards Nominees | Photo: Henry McGee



2012 Gene Kelly Awards Finale Participants | Photo: Matt Polk

CLO Cabaret

Pittsburgh's Best-Kept 'Secret'



Pittsburgh CLO is in the midst of an exciting time! The Summer Season is officially open and just across the street another Pittsburgh CLO premiere, *Side By Side By Sondheim*, is in full swing. Pittsburgh audiences will have the chance to enjoy high-quality Pittsburgh CLO musical productions all summer long.



CLO Cabaret | Photo: Joey Kennedy

The CLO Cabaret provides an intimate experience where patrons can wine and dine while enjoying an evening of entertainment at its finest. To add an exciting twist to the typical theater-going experience, the Cabaret features delicious appetizers, entrees and desserts as well as a full bar provided by the Pittsburgh Cultural Trust, which owns and operates the venue. The 250-seat theater offers both table and traditional theater-style seating and has been entertaining audiences since 2004 with popular hits such as *The Marvelous Wonderettes*, *Girls Only: The Secret Comedy of Women* and, most recently, *You Say Tomato, I Say Shut Up!*

Fans of musical theater will fall in love with this latest Cabaret premiere - a tribute to America's greatest living composer, Stephen Sondheim. *Side By Side By Sondheim* is a dazzling collection of songs by Broadway's musical master. You'll laugh, cry and fall in love with music from many of his very best works including: *Company*,

Follies, *A Little Night Music*, *Anyone Can Whistle* and *Pacific Overtures*. This exciting production also features the classics he wrote with musical theater giants Leonard Bernstein, Jule Styne and Richard Rodgers -



Billy Hepfinger, Daniel Krell, Lenora Nemetz and Caroline Nicolian in Pittsburgh CLO's *Side By Side By Sondheim* | Photo: Archie Carpenter

West Side Story, *Gypsy* and *Do I Hear a Waltz?* You'll be treated to these and more in this musical feast!

A night at the CLO Cabaret can be an unforgettable experience. Four great packages are available in conjunction with *Side By Side By Sondheim*. Our Girls' Night Out package offers pre-show salon services at Salon Nuvo along with a martini and a ticket to the show; or, enjoy a matinee with a wonderful brunch at Six Penn Kitchen followed by a ticket to the show. You can also enjoy Date Night with dinner at The Capital Grille, or experience a night with appetizers, drinks and mingling with young professionals during "Theater on Tap." The CLO Cabaret is also host to many corporate functions and employee events throughout the year, offering party accommodations or private performances for groups of all sizes.


Up next at the CLO Cabaret is the longest running solo play in Broadway history, *Defending the Caveman*. In 2011, Pittsburghers were doubled over laughing in their seats from this popular show. Beginning September 5, *Defending the Caveman* returns to the CLO Cabaret and will have you roaring once more with laughter. Both sexes will find themselves laughing and nudging each other affectionately as they recognize themselves in the stories being told on stage.



Caroline Nicolian in Pittsburgh CLO's *Side By Side By Sondheim* Photo: Matt Polk

In addition to the wonderful theatrical performances, the CLO Cabaret is home to the Backstage Bar, where memorabilia lines the walls and drinks are always available.

For more information about the **CLO Cabaret** or to order tickets, visit CLOCabaret.com or call **412-456-6666**. Get your tickets and don't miss out on a night at the hottest spot in town!



Standing ovation?

No question about it! Ernst & Young is a proud supporter of the Pittsburgh Civic Light Opera. The arts inspire us to reach beyond the ordinary. At Ernst & Young, striving for excellence and performing up to our full potential is how we build our business every day.

ey.com

ERNST & YOUNG
Quality In Everything We Do

© 2013 Ernst & Young LLP. All Rights Reserved. ED none.



Backstage Favorites!

From supplying sets and editorial shoots around the world, IT&LY Hairfashion now proudly sponsors Pittsburgh's world renowned CLO.

*Congratulations Gabriela!
from Renee & Richard Zuckero*

IT&LY
HAIRFASHION

1.800.621.4859 • www.italyhairfashion.com

THE REVIEWS ARE IN!



It's thumbs up all the way. See what our customers are saying about the show-stopping experience they receive at #1 Cochran.



"Without question, it was one of the nicest experiences in buying a car that I have ever had. No pressure, knowledgeable and courteous! Need I say more? Service has been exceptional!"

Hank



"I'd recommend anyone to work with #1 Cochran."

Alanna



"Had an amazing experience buying my F-150. I won't shop anywhere else for a vehicle. There wasn't any pressure and they were only worried about making me happy."

Jess



"It seems like I shopped every Nissan Dealer between Cleveland and Philadelphia before I found my Black Cherry Nissan 370Z at #1 Cochran Nissan. Well worth the drive from Fairview to Pittsburgh!"

Lisa



"Best car buying experience ever!"

Kat



"Absolutely wonderful. Courteous, respectful and willing to work with us to find something in our price range. Great salespeople. All around wonderful experience. Will be going back for sure!"

Shannon



"I love these guys."

Melanie

The entire #1 Cochran team was easy to work with and provided great service. I felt comfortable with the product that I was buying and that the price was right. The buying experience was much easier than another recent purchase from another dealer.

Shawn



Read more customer reviews at DealerRater.com or check out our Testimonials section at cochran.com.

#1 Cochran
cochran.com

KIA SUBARU CADILLAC NISSAN INFINITI BUICK FIAT HYUNDAI
VOLKSWAGEN GMC DODGE RAM CHRYSLER JEEP FORD

VIBRANT INNOVATIVE
 EDUCATIONAL ART
 SPECTACULAR ENTERTAINMENT
 MUSICAL THEATRE
 PERFORMERS TALENTED
 CELEBRATE EXCELLENCE
 BRAVE
 ENJOY
 ENJOY
 VIBRANT
 EAT
 TALENTED VIBRANT
 LIVE EXCEPTIONAL
 APPLAUSE CLO DE
 CRITICALLY ACCLAIMED
 BOLD CELEBRATION
 INNOVATIVE CREATIVITY

We deliver
 bold statements.

We're proud to sponsor the Pittsburgh CLO Summer Season, and we applaud the great performances that bring our cultural district to life.

Pittsburgh Post-Gazette®
 post-gazette.com

for
 stealing
 the show.



pnc.com

©2013 The PNC Financial Services Group, Inc. All rights reserved. PNC Bank, National Association. Member FDIC



Official Ticketing Websites

www.pittsburghCLO.org and www.culturaldistrict.org are the only **AUTHORIZED TICKET PROVIDERS** for Pittsburgh CLO.

Tickets from other sources may be:
 1) more expensive, 2) invalid and
 3) ineligible for assistance.

We are not responsible for tickets purchased from other sources.

412-456-6666
www.pittsburghCLO.org

2013 Tony Award® Nominations Announced - 8 Pittsburgh CLO Alumni Nominated!

Pittsburgh CLO wishes to congratulate all the nominees, including the following Pittsburgh CLO alumni:

- **Andy Blankenbuehler** – Best Choreography: *Bring It On: The Musical*
- **Stephanie Block** – Best Performance by an Actress in a Leading Role in a Musical: *The Mystery of Edwin Drood*
- **Carolee Carmello** - Best Performance by an Actress in a Leading Role in a Musical: *Scandalous*
- **Victoria Clark** – Best Performance by an Actress in a Featured Role in a Musical: *Rodgers & Hammerstein's Cinderella*
- **Jules Fisher** – Best Lighting Design of a Play: *Lucky Guy*
- **Donald Holder** - Best Lighting Design of a Play: *Golden Boy*
- **Billy Porter** – Best Performance by an Actor in a Leading Role in a Musical: *Kinky Boots*
- **Albert Wolsky** – Best Costume Design of a Play: *The Heiress*

Break a leg at the Tony Awards® on June 9!



Your financial world
is changing...

Good thing you have choices.



28 offices to serve you in Greater Pittsburgh

Northwest Direct: 1-877-672-5678 • www.northwestsavingsbank.com

Member FDIC

ACTION NEWS 4

Demetrius Ivory Michelle Wright Kelly Frey Janelle Hall

*Start Your Day
The Pittsburgh Way!*

Weekdays
4:30, 5:00 & 6:00AM

4 abc WTAE



Thank You

The CLO "A" in Arts Program is made possible by a grant from the CLO Ambassadors.

The CLO Gallery of Heroes in-school program and *We the People, the Musical* are sponsored by AT&T, Dominion, Highmark Blue Cross Blue Shield, The Massey Charitable Trust, Mary Hillman Jennings Foundation and The William Randolph Hearst Foundation.

The Gene Kelly Awards are presented in partnership with the University of Pittsburgh. Additional support is provided by Highmark Blue Cross Blue Shield, PNC, Virginia S. Nicklas, and by the CLO Ambassadors.

The Charles Gray Award for Special Achievement in Arts Education is underwritten by the Roy A. Hunt Foundation.

CLO New Horizons is made possible in part by UPMC and Highmark Blue Cross Blue Shield.

Sponsorship for the CLO Mini Stars is provided by the CLO Guild.

42nd Street is sponsored by PNC as part of the PNC Spotlight Series.

Stars of Pittsburgh CLO's Summer Season dine at the Grand Concourse Restaurant at Station Square.

The Omni William Penn is the Official Hotel of the Pittsburgh CLO.

#1 Cochran is the Official Car provider of the Pittsburgh CLO.

Pittsburgh CLO Orchestra

Musical Coordinator · Frank Ostrowski
Orchestral Copyist · Richard Rockage

Woodwinds
George Hoydich
Daniel Heasley
Terry Steele
Curtis Johnson
James Germann

French Horn
Matthew Litterini

Trumpets
Stephen Hawk
Joe Herndon
Thomas Smalara

Trombone
Evan Broman
Glenn Wayland

Keyboard
Jerry Dantry

Harp
Frances Duffy

Guitar
Ken Karsh

Bass
Jeffrey Mangone, Sr.

Percussion
Albert Wrublesky



Pittsburgh CLO Annual Fund Donors

The Pittsburgh CLO thanks its many community partners who have supported the 2013 Annual Campaign (October 1, 2012 through May 17, 2013). Their support plays a critical role in helping the CLO to provide the very best in musical theater and arts education programs throughout the region.

The Pittsburgh CLO is grateful for the generous support provided by The Pittsburgh Cultural Trust

LEAD PRODUCERS SOCIETY (\$10,000 and above)

Dan and Debby Booker (26) ±
Tony and Linda Bucci (7) ±
Kim & Curt Fleming (14) ±
Joe and Kathy Guyaux (12) ±
Kevin & Vicki Halloran (11) ±
Rose M. Kutsenkow IMO Dr. Michael Kutsenkow (2) ±
Bill & Sandy Lambert (14) ±
Mr. & Mrs. Robert C. McCartney (33) ±
Mark & Diane Minnaugh (9) ±
Charlene & Dominic Petrelli (4)
Matthew and Carolyn Ray (3) ±
Ron and Patricia Violi (5) ±

PRODUCING DIRECTORS (\$5,000-\$9,999)

Mr. Walter J. Blenko, Jr. (29)
Michael J. Brunner (11)
Stephen and Helen Hanna Casey (24)
Mr. and Mrs. Peter J. Germain (8)
Van Kaplan and Mary Jane Brennan
Fred and JoEllen Leech (3)
Virginia S. Nicklas IMO Gene Kelly (13)**
Peter & Leslie Robinson (9)
Stephan and Debra Todd (5)
Mr. & Mrs. Richard J. Voller (28)
Richard, Renee and Gabriela Zucckero (1)

EXECUTIVE PRODUCERS (\$2,500-\$4,999)

Vitasta Bazaz & Sheen Sehgal Fund IMO
Dr. Kuldeep Sehgal (12)
Michael and Carol Bleier (12)
Jim and Kristin Brennan (4)
Mr. & Mrs. George A. Davidson, Jr. (29)
Stacy and Christopher Dee (2)
Eric Dickerson and Roslyn Pitts (6)
Joe and Karen DiVito (3)
Alvaro & Sandy Garcia-Tunon (7)
George Consulting Services (2)
Richard S. Hamilton (12)
Mr. & Mrs. Robert A. Harlan (12)
Jim and Debbie Kane (2)
Edward & Suzanne Karlovich (9)
Tom & Chris Kobus (17)
John and Phyllis Kosar (5)
Mark and Cheri Latterner (5)
Nicholas and Anne Liparulo (3)
Allyn J. Lynch (3)
Louis Martin, III (4)
Todd and Miriam Moules (10)
Laurie Burkhart Mushinsky (14)
David & Johanna O'Loughlin (12)
Donald Plants (3)

Eric and Michele Schaffer (7)**
Tom and Brenda Shields (2)
Speciality Conduit & Manufacturing, LLC (2)
Stephen Totter IMO
Robert Eppinger (4)**
Gary & Debbie Truitt (12)
Mr. John C. Williams, Jr. (21)
Teresa M. Williams (14)
Dana and Sarah Yealy (6)

PRODUCERS (\$1,000-\$2,499)

Donald B. Arnheim (12)
David M. & Doralyn L. Beihoff (9)
Paul E. Block (14)**
Ms. Maryann Boehm (7)
Jennifer Bohland (3)
Russell Crupe (2)
Laurel Dagnon and Patricia Jarrett (1)
Joan Clark Davis (16)
Jane & Michael Dixon (14)
Eleanor Dragan (12)
Wynne Rooney Fedele IMO Betty Ann Rooney
Mr. William R. Forsythe (25)
David and Deborah Freeman (2)
Carol B. Furness IMO
Charles B. Furness (1)
Honorable & Mrs. Robert C. Gallo IMO
Ann Caridi Pugliese (9)
Sara Hamann (1)
Richard & Scheryl Harshman (2)
The Hastings Family (28)
Carlyle and Rebecca Hoch (3)
The Huston Family IMO
Steven Huston (4)**
Lauren Joseph (1)**
Michael & Dolores Kara (13)
Joseph B. Koval Real Estate (1)
Stephen Lawler (3)
Richard B. and Barbara Kay Lorantas (1)
Raymond & Karen Love (12)
Mrs. Patti Matty IMO W. Paul Matty (36)
Maria and Rocco Panucci (5)
Pittsburgh Valve and Fitting Company (10)
Rita Randall (23)
Andrew & Laura Reinhart (5)
Iva and Gene Saraceni IMO their daughter Elyse Jeanne Saraceni (4)
Brian and Karen Shanahan (2)
Arlene & Barry Sokolow IMO Anna & Nicholas Zelkovic (12)
Mark & Jocelyn Moules (16)
Mr. & Mrs. Steven A. Stepanian II (29)
Dennis and Diane Unkovic (5)
Mr. & Mrs. W. Robert Wells (26)

Travis & Nichole Williams (4)
Tim & Linda Zimmerman (25)
Judith & Clifford Zlotnik (11)

PATRONS (\$500-\$999)

Abarta, Inc. (8)
Phyllis Bertok (2)
Mr. and Mrs. Roland S. Catarinella (56)
Mr. and Mrs. Kevin Colbert (6)
Adam and Patricia Davidson (10)
Dr. and Mrs. Gregory Dell'Omo (8)
Anita Domalik (1)
Edward L. Foley, M.D. (16)
Benson Gabler (2)
Dr. and Mrs. Howard R. Goldberg (4)
Mr. & Mrs. Thomas P. Hartsell (15)
Emily Heidish IMO John G. Heidish Jr. (6)
Alison and Arthur Kern IMO
Charlie and Pat Gray (4)**
John K. Maitland (37)
Richard and Nancy McKnight (25)
Timothy McNulty (3)**
Jeremy and Vanessa Mercer (2)
Mr. & Mrs. James T. Perryman, Sr. (16)
Rich and Niki Pipak (3)
Ms. Mary Alice Price (4)
Dr. & Mrs. George S. Richardson (26)
Mona and Bob Riordan (19)
Drs. Paul Shay & Diana Lemley (10)
Mr. & Mrs. Steven M. Silberman (13)
Maria and Sal Sirabella (17)
Sally Wade (26)
Mr. and Mrs. Thomas Wash (6)
Bob & Nancy Williams IMO Ruth & Frank Givens and Don & Ardell Williams (14)

SPONSORS (\$250-\$499)

Anonymous
Christopher Abel (1)
Dr. & Mrs. Lee T. Agostini (22)
Laura and Patrick Barry
Drs. Chris and Amy Bartels (5)
Dr. Joann Bevilacqua Weiss IMO
Dr. Oliver F. Weiss (24)
Joan M. Blasinsky (3)
Mr. & Mrs. Alfred Bonfiglio (16)
Robert & Kathleen Boykin (25)
Dr. and Mrs. Robert N. Breit (4)
Daniel J. Brennan (1)
Eric Carraux (1)
Robert and Suzanne Chisler (9)
Joe and Elaine Chojnacki (2)
Tom and Dale Christopher (13)
Kristian S. Chrysofos (2)

Pittsburgh CLO Annual Fund Donors

Mr. Edward E. Clever IMO
Barbara J. Clever (4)
Michele Rone Cooper (8)
David & Carol Eibling (9)
Gary L. and Karen A. Evans (6)
Mr. & Mrs. Frederick R. Favo (25)
Theresa B. Fedio (15)
Jeannette Fitzwater (7)
Kimberly Lewis Gottschalk IMO
Dorothy Lewis (3)
Charlie and Pat Gray IMO the Administrative and Production Staffs (25)
Reverend James R. Gretz (25)
Mr. and Mrs. Anthony Grieco (8)
Peter and Susan Herchenroether (7)
Jeff Irwin, D.D.S. (26)
Mrs. Frances Kelly (4)
Arthur and Virginia Kerr (39)
Patrick and Marcia King Dunphy (18)
Mr. & Mrs. James Laffey (18)
Mr. & Mrs. John P. Lavery (14)
David & Terry Lloyd (12)
Lori Luton (1)
Richard Marciniak (6)
Valerie and Ronald May (18)
Renee McAdams (4)
Sidney McBride IMO John K. McBride (39)
Dr. and Mrs. James McCann (3)
Kevin and Tammy McCarl (1)
Mr. and Mrs. Harry McFarland (14)
Paul McFarlane (3)
Kevin & Kristen McMahon (12)
Catherine Mechling (16)
Tadd A. Morganti (1)
The Murray Family (3)
David & June Nimick (16)
Ron Palarino (1)
Paul & Paula Palmer IMO
Bill Thunhurst (11)
Richard Pavlik (2)
Trip and Jenny Radcliffe (2)
Donna and Walter Rhodes (20)
Burton H. Roberts (3)
Nancy Jo Roseberry IMO Timothy Lee Roseberry IMO Matt, Jeff, Arlene & Pete Roseberry (4)
Mrs. John M. Sadler (5)
Hank & Lorraine Sepp (10)
Rick and Robin Shaffer (2)
Mr. and Mrs. Fred F. Smallhoover (7)
H. Robert Spicher (3)
Rev. Timothy P. Stein (6)
Steven Stockton (2)
Mr. and Mrs. Regis J. Synan (15)
Mr. & Mrs. Donald J. Tripi (9)
Charles and Sue Turner (24)
Dr. Thomas E. Vrabec (28)
Reverend Thomas A. Wagner (21)
William J. Walsko (5)
Maryellen Walter (3)
Joseph Weiss IMO Judith Ann Weiss (6)
Mr. and Mrs. Robert W. Wickerham (23)
Kathy and Larry Wilhelm (4)

Margie Williams (10)
Mona Rae Williams IMO J. Edgar, Ruth & John E. Williams (5)
Julie and Jim Wiltman (9)
Jon Witmer - All About Pets (1)
Lori K. Woodbury (5)
Peter Zikos Insurance Agency LLC (3)

LIMELIGHTERS (\$100-\$249)

Anonymous
Gary and Grace Abbs (2)
Michael J. Accetta (6)
Mr. & Mrs. Rex Althoff (11)
Charles and Veronica Anchors (2)
Joann S. Anderson (4)
Dr. & Mrs. Robert B. Atwell (14)
Eva Aulicino (5)
Mr. and Mrs. George Baier (9)
David L. Bailey (9)
Mary Ann Baker (2)
Ann M. Baldrige (38)
Bruce & Janet Bartlett (12)
Beth Baxter (5)
Dr. Michael Charles Bell MD (1)
Paul G. Benedum, Jr. (15)
Susan Berman and Douglas Kress (5)
Deborah Bernardi (8)
Charles & Michelle Bossong Jr. IMO Mondello Family IMO Bossong Family (14)
Norman Brawdy (3)
Alan M. Brown (18)
Patricia Burns (3)
Robert Burton IMO Steven Huston (1)**
Mr. & Mrs. Richard L. Buzard (36)
Mr. Mark J. Caldane & Dr. Paul J. Lebovitz (3)
Kari Caldwell (1)
S. Donald and Mary Lou Campbell (2)
Arnold J. Capellman, Jr. IMO
Alice M. Capellman (10)
Ellen Carabin (3)
Linda Carpenter (2)
The Carson Family (3)
Miss Heather Chappars (4)
Jason Chappell (2)
Dr. Deborah Chiappelli (6)
Maureen and Brandon Ciampaglia
Jonathan and Pamela Clark (1)
Nat & Diane Cohen (5)
Jace Condravy & Tim Chase (4)
Elizabeth A. Connor (7)
Cindy Crytzer IMO Myrtle K. Friend (2)
Mr. and Mrs. Richard Currie (2)
Catherine M. Daily IMO
Hazel P. Daily (18)
Jacqueline Dawson (2)
Nancy C. Debranski-Ferrell IMO
My Mom, Rose A. Debranski (14)
Rich & Mary Debski (13)
Edward DePersis (11)
Jay Desantis (6)
Gerald "Yonk" Di Loreto (13)

James & Theresa Doerfler (11)
Ron and Paula Dorsch (2)
Dr. Wayne W. Doyle IMO
Mrs. Anita Doyle (4)
Merrill and Theresa Druggs (9)
Mr. Carl R. Dudeck (4)
Amy Ellis (1)
Carole E. Ferri IMO
Husband Edward J. Ferri (27)
Bob and Jane Fiedler (3)
Mr. & Mrs. David F. Figgins (33)
Mr. Jeffrey L. Fink IMO Joanne Fink (18)
Mr. and Mrs. William W. Flanagan (5)
Frances M. Fledderman (2)
Anthony Florence (1)
Tom and Donna Fornataro (3)
Edward and Marilyn Fortwangler (2)
Mr. & Mrs. Paul K. Fox (20)
Sandra and Thomas Fox (1)
J. Peter and Wendy Freed (5)
Katherine and John Freed (4)
Brenda and Timothy Freeman IMO
Steven Huston (1)**
Tina Gdovic (1)
Terri and Frank Genovese (2)
John Gerwig (1)
Donald and Betty Gianni, Sr. (16)
Paul and Lisa Giusti (2)
Monica Glowinsky (3)
Harvey and Carol Gumto (2)
Michael and Sandra Guritza (2)
James Harkins (1)
Camille Harris (2)
Ronald E. Heakins IMO
Marie M. Ganassi (2)
Lori J. Heinecke (19)
Robert and Georgia Hernandez (1)
Mr. & Mrs. Darrell J. Hess (10)
John H. Hill (40)
Beverly Hines (4)
Lois M. Hoffman (11)
Millicent Hunchuck (1)
Charles Hunnell (13)
Mr. & Mrs. James Hunter (7)
Michael Hunter & Scott J. Donaldson (4)
Faye L. Irely (8)
Michelle Ivill (1)
Laurie and Mike Johnston (1)
Dr. & Mrs. Robert T. Jones, Jr. (27)
Diane Jungquist (19)
William B. Kania (9)
George & Scarlet Karpakis (12)
Khalid Khilji (3)
Debra and Jack King (4)
MaryAnn & Bill King (11)
James R. Kirsch IMO Audrey K. Kirsch (4)
Dr. Stephanie Kobil (18)
Blair and Jennifer Koss (1)
Stephanie Krick (3)
Pat and John Kuhlman (5)
Edward E. Kuyweski (13)
Mr. and Mrs. Irving Latterman (1)
John R. Leathers (7)
Mr. and Mrs. Shawn Leifheit (3)



Pittsburgh CLO Annual Fund Donors

Janet Lloyd (3)**
 Lisa and John Lombardo (5)
 Carol Lorigan (6)
 Ronald & Christine Lunardi (12)
 Dr. Ronald and Cheryl Lutes (3)
 Donna D. Macsuga (4)
 Mr. & Mrs. Robert Madar (8)
 Mr. & Mrs. Gregory D. Maloney (21)
 Patricia K. Mansfield (6)
 Janet K. Manuel (6)
 Martin R. Marker II (1)
 Louis Martin, III (4)
 Nancy Mathews (5)
 Shelly Mathieson (4)
 Larry & Michaelene McCahan (20)
 Loretta McClintock (5)
 Dr. and Mrs. Lee H. McCormick (17)
 Bernice McCort IMO Robert McCort (4)
 Lee & Michele McCracken (3)
 Skip McGreevy IMO Teresa McGreevy (7)
 Daniel and Cheryl McKenna (4)
 Mr. and Mrs. William Mecca (2)
 Dan and Susan Metelsky (2)
 R. Mark & Natalie Metz (9)
 Dr. Paul and Linda Mihalek (12)
 Robert Miles (1)
 Carol & Don Miller (5)
 Olivia Miller (1)
 John A. Mills, III (37)
 Mr. & Mrs. Robert C. Milsom (14)
 Ms. Niveditha Mohan (2)
 Tom & Marcia Morton (41)
 Richard S. Mowl, Jr. (10)
 Mr. and Mrs. Mark Mracna (2)
 Robert & Diane Murphy (6)
 Robert F. and Madeline M. Napoli (11)
 Jeff & Patty Nayhouse (13)
 Dan and Lisa Nydick (7)
 Mr. and Mrs. James R. Okonak (6)
 Mr. and Mrs. James O'Neill (15)
 William and Audia Otto (6)
 Pauline and Joseph Oyler (18)
 Steven & Helen Patricia (9)
 Kathy & John Pechunka (5)
 Stephen and Gerry Piskurich (16)
 Mr. & Mrs. Donald J. Platt (16)
 Kathy Jo Pollack (10)
 Mary and Timothy Powell (1)
 Jerry and Judy Prado (4)
 Mr. Tim and Dr. Lynn Prosser DNP (7)
 Barbara Provenzano (8)
 Rekha Punukollu (1)
 Debbie Raible (5)
 Dr. Michael J. Ramsay (3)
 Gregg and Mary Ramshaw (1)
 Constance Rapp (1)
 Audrey & Bruce Renn (17)
 Terry Ricciardi (16)
 Edward Rice (9)
 Jim Rich (21)
 Greg and Nancy Richmond (9)
 Benjamin Rister (1)
 Susan & Joseph G. Robinson Jr. (13)
 David Rometo (1)

Donald Rood (2)
 Sally & George Rooney IHO
 Wynne Fedele (20)
 Allan Rose (5)
 Mr. and Mrs. Byron Rosener (5)
 The Rossi Family (4)
 Mr. and Mrs. Roland Rousey (3)
 Teresa Royek (1)
 Don & Mary Rugh (13)
 Mr. and Mrs. Ronald Rusinak (13)
 Carol A. Scalse (3)
 Karen Scansaroli (8)
 Jeannette Scheer (3)
 Thomas and Perri Schelat (2)
 Mandy Schnupp (1)
 Mary J. Seghi (14)
 David and Elizabeth Seiner (5)
 Mr. & Mrs. Kenneth J. Senatore (22)
 Tina M. Senules (5)
 Victoria M. Serafini IMO Mr. & Mrs.
 Joseph J. Radovich, Sr. (12)**
 Mr. and Mrs. James Shaftic (4)
 Kathy A. Shuminsky (6)
 Vincent J. Siciliano IHO
 John A. Siciliano (27)
 Peter J. & Nadine M. Skrgic (14)
 Miss Margaret F. Sloan (16)
 Mr. and Mrs. Joseph B. Smith (2)
 Richard Snedden (2)
 John and Rose Sparvero (11)
 Cheryl Spuhler (6)
 Honorable and Mrs. William L.
 Standish (14)
 Jeanne K. Stefl IMO Charles Stefl (9)
 Carol M. Stein (9)
 Mr. & Mrs. Gregory Stein (26)
 Barbara M. Steinberg (10)
 Norris and Donna Stephens (5)
 Rona & Gary Sterling (12)
 Robert and Gail Stevens (1)
 Debra Stiger (2)
 Michelle & Jerry Stovka (3)
 Dr. and Mrs. Donald W. Strang (9)
 Mitchell and Barbara Taback (1)
 Susan M. Tack (1)
 Mr. and Mrs. Robert Tate (6)
 Janet L. Templer IMO
 Carol R. McAuley (14)
 Alice & Jim Ternent (17)
 Dick & Jacalyn Thomas (12)
 Mr. & Mrs. Regis Tomsey (15)
 Barbara Trachtenberg (25)
 Charles F. Traeger & Rita
 Powroznik-Traeger (9)
 Elizabeth Trocchio IMO
 Zoe Belle Snyder (3)
 Catherine Turner (13)
 Jessie VanSwearingen (2)
 Ginny Verno (4)
 David Vinski (2)
 Cathie Visconti (1)
 Nancy Vrabel (5)
 Deborah Walker and Paul Floreancig (2)
 William D. Wall (2)

Sue and Jerry Walsh (17)
 Pat Walters (5)
 Mrs. Lillian Wanner (26)
 Margaret H. Watson (2)
 Nancy Welfer (5)
 Mary and Larry Werner (5)
 Mr. and Mrs. Raymond B. White (4)
 Peggy C. Whitehurst (1)
 Pete and Jean Wicks (9)
 Mr. & Mrs. H. Wayne Wiester (22)
 Doris Carson Williams (11)
 Pamela Willis IMO John &
 Vivien Willis (11)
 Janice Wirth (4)
 Mr. Thomas Wyse & Mr. Robert A.
 Neft (16)
 Paul F. Zibritosky (6)

The following have provided matching gifts for their employees' contributions to Pittsburgh CLO

3M Foundation
 BNY Mellon
 Capital Group Companies
 Dollar Bank
 Dominion
 Emerson Electric Co.
 EQT
 Highmark
 PNC Foundation
 PPG Industries
 Robert Morris University
 The Prudential
 Wachovia

FOUNDATIONS

The Audrey Hillman Fisher Foundation (2)
 Bozzone Family Foundation (11)
 Charity Randall Foundation (30)
 Anne L. and George H. Clapp Charitable Trust (10)
 The Heinz Endowments (66)
 The Jack Buncher Foundation (4)
 Massey Charitable Trust**
 Founders: Harris B. Massey and Doris J. Massey (64)
 Milton G. Hulme Charitable Foundation (62)
 Norman C. Ray Trust (11)
 Pauline Pickens Charitable Trust (16)**
 Stephen and Debra Todd Fund of the Pittsburgh Foundation (4)
 The Edith L. Trees Charitable Trust (10)**
 The Grable Foundation (14)**
 The Hillman Foundation (6)
 The Pittsburgh Foundation (4)
 The Robert and Mary Weisbrod Foundation (47)
 Vernon C. Neal & Alvina B. Neal Fund (13)**
 W. I. Patterson Charitable Fund (46)

Pittsburgh CLO Annual Fund Donors

Pittsburgh CLO thanks the Guild and the Ambassadors for their generous support of the CLO Performance Season and CLO's Education and Outreach Programs.

± Denotes member of our Lead Producers Society

IMO: In Memory Of
 IHO: In Honor Of

() Number denotes years of support to Pittsburgh CLO

* All or part represents In-Kind Services

** All or part of gift restricted to support of the CLO Academy and its Education and Outreach Programs.

Listing is complete as of 5/17/13. Every attempt is made to ensure that listings are correct, but if there are errors or omissions, please contact the CLO Development Office at 412-281-3973, ext. 215.

To become a Pittsburgh CLO donor, please visit us online at pittsburghCLO.org, or send your contribution to:

Pittsburgh CLO
 Development Office
 Benedum Center
 719 Liberty Avenue
 Pittsburgh, PA 15222

Thanks to Oxford Development Company for their support of the Musical Theater Initiative



Pittsburgh CLO thanks



for its support of
 42nd Street



Annual Fund Donor Benefits

Gene Kelly Producers Society

Lead Producers (\$10,000 and above)

- ♪ Special dinner and show with Executive Producer.
- ♪ Opportunity to donate 25 Kelly Circle tickets to a non-profit organization.
Plus all benefits enjoyed by Producing Directors

Producing Directors (\$5,000 - \$9,999)

- ♪ A night at the CLO Cabaret for four, including dinner, drinks, and parking.
Plus all benefits enjoyed by Executive Producers

Executive Producers (\$2,500 - \$4,999)

- ♪ Two complimentary season tickets for the 2014 Summer Season.
Plus all benefits enjoyed by Producers

Producers (\$1,000 - \$2,499)

- ♪ Free parking for CLO performances.
- ♪ Concierge ticket service.
- ♪ Backstage tour for four.
- ♪ Two additional complimentary tickets to a Pittsburgh CLO-produced performance.
- ♪ Invitation to the *Supper with the Stars* during the Summer Season.
- ♪ Producers Society Member Discount at the CLO Boutique.
Plus all benefits enjoyed by Patrons

Patrons (\$500 - \$999)

- ♪ A CD of the production of your choice from the 2013 Summer Season.
- ♪ Tour of the CLO Construction Center for four.
Plus all benefits enjoyed by Sponsors

Sponsors (\$250 - \$499)

- ♪ Two complimentary tickets to a Pittsburgh CLO-produced performance.
- ♪ Discount coupon for the CLO Boutique.
Plus all benefits enjoyed by Limelighters

Limelighters (\$100 - \$249)

- ♪ Invitation to a special reception and dress rehearsal.
- ♪ Complimentary beverage for you and your guest during a Pittsburgh CLO intermission.
- ♪ Listing in the season program (date restrictions apply).
Plus benefit enjoyed by Backers

Backers (\$50 - \$99)

- ♪ CLO notepad folio.

To become a Pittsburgh CLO donor, visit pittsburghCLO.org, call 412-281-3973 extension 210, or mail to the Development Office, 719 Liberty Avenue, Pittsburgh, PA 15222.

Thank you for your support!

The tax deductible amount of your contribution is limited by the excess of your contribution over the value of certain benefits provided by CLO. For more information, visit pittsburghCLO.org. A copy of the official registration and financial information may be obtained from the Pennsylvania Department of State by calling toll free, within Pennsylvania, 1-800-732-0999. Registration does not imply endorsement.

PERFORM WITH THE BEST THIS SUMMER!



This popular program is a must for any aspiring performing artist



Daily schedule includes:

Technique Classes

Train with the best in the city!

Develop your skills in each discipline by taking one technique class per day:
Acting, Voice or Dance.

Rehearsals & Performance

Learn songs, scenes and staging.
Perform *RENT* at the conclusion of this three-week experience!

June 17 - July 3, 2013

4:00pm-8:30pm | Grades 8-12



SPACE IS LIMITED. REGISTER ONLINE TODAY!
pittsburghCLO.org | 412-281-2234

See the *Stars of Tomorrow!* Performing *LIVE at Your Event!*



For over 25 years, the CLO Mini Stars have built a reputation as Pittsburgh's leading young performance company. This talented group of 21 young professional artists has been featured at numerous high-profile events in the region and is now available to provide 30 minutes of spectacular live musical theater entertainment for your next social event or corporate function.



Book NOW!
412-325-6459
pittsburghCLO.org



REFRESH YOURSELF AT



**COURTYARD MARRIOTT
PITTSBURGH
DOWNTOWN**



**A NEW EXPERIENCE
THAT WILL INVIGORATE
THE MIND AND RELAX THE
BODY**



**945 Penn Avenue
Pittsburgh, PA 15222
Phone: 412-434-5551
Fax: 412-434-5552**

www.courtyardpittsburghdowntown.com



GROUPS SAVE Dramatically!

It Only Takes 10 to Save!

- Have the opportunity to reserve tickets BEFORE they go on sale!
- Exclusive Discounts & VIP Service
- Exciting Girls' Night Out & Special Event Packages
- Take advantage of a convenient payment schedule

42nd Street Theater Parties

- | | | |
|--------------------------------------|---------------------------------------|-------------------|
| Arizona State University Alumni Club | Kitanning High School Drama Club | Weinzierl Party |
| Out of the Blue Retirees | Vincenian Villa & Regency | Charmichael Party |
| Masonic Grand Lodge | Hickory High School | DiMarzio Party |
| Touriffic Travel | Dana's Dance Dimensions | Lin Party |
| Marshall County WV CEOs | Clarion University Alumni Association | Rygelski Party |
| AAA Hebda Group | Marion County Y-Teens | Prunczik Party |
| Uniglobe Ohio Valley Travel | Blackhawk High School | Hawk Party |
| | Norwin High School | Smith Party |
| | Redshaw Party | Feldman Party |
| | | Carlow University |
| | | Franciscus Party |
| | | Abola Party |
| | | Gaydos Party |

Groups of 10+
412-325-1582
Groups@pittsburghCLO.org

Desti Oakley in Music Theatre of Wichita's Disney's The Little Mermaid | Photo: Christopher Clark Photography



Calling all Girl Scouts!



Disney's The Little Mermaid Pizza Parties

- July 13 - 6pm, Show at 8pm
 - July 20 - 12pm, Show at 2pm
- Package Price: \$26.00

All ages



Group Sales **412-325-1582**
Groups@pittsburghCLO.org

Space is limited!



Pittsburgh CLO Staff

Van Kaplan, *Executive Producer*

ADMINISTRATION

Joel Ambrose *Assistant Customer Service Manager*
 Kristin Archbold..... *Communications Specialist*
 Julianne Avolio..... *Group Sales Coordinator*
 Stephanie Barletto *Graphic/Web Designer*
 Laura Barry *Manager of Individual Giving*
 Lori Berger..... *Associate Producing Director*
 Maureen Ciampaglia..... *Development Coordinator*
 Wynne Fedele *Director of Development*
 Charlie Foukes *Office Manager*
 Talon Godin *Graphic/Web Design Assistant*
 Ellen Granger..... *Ticket Manager*
 Aja Jones *PR/Marketing Manager*
 Anne Leonard *Accounting Assistant*
 R. James Mercer..... *General Manager*
 Cindy Opatick *Associate Producer*
 Elizabeth Roberts *Assistant to the Executive Producer*
 Aaron Tindall..... *Subscription Associate*
 Andrew Watson *Merchandising Manager & Special Events Coordinator*
 Kristin Welch..... *Group Sales Coordinator*
 Cheryl Young *Assistant Ticket Manager*
 Monica Zyra..... *Business Manager*

CLO ACADEMY

Michael J. Cerchiaro *Education Programs Manager*
 Kelsey Deck..... *Admissions Coordinator*
 Seth Laidlaw *Receptionist*
 Kiesha Lalama *Education Director*
 Patty Maloney *Principal*
 Susan Pettigrew *Education & Outreach Scholarship Coordinator*

CONSTRUCTION CENTER

Michael Bannias..... *Assistant Foreman*
 Robert Baronick *Key Carpenter*
 Michael Campise *Shop Assistant*
 Darien D'Alfonso *Scenic Artist*
 Charles Eccles..... *Key Carpenter*
 John R. Edkins *Production Technical Supervisor*
 Adolf Hundertmark *Foreman*
 Jeffrey Husser *Propman*
 Brent Peelor *Key Carpenter*
 Brittany Stevens *Scenic Artist*
 George Stevens *Scenic Artist*
 Michele Sullivan..... *Office Manager*
 Leigh Taylor *Charge Scenic*

PRODUCTION

Jamie Adams *Assistant Company Manager*
 Gail Baldoni *Costume Coordinator*
 Lori Berger..... *Associate Producing Director*
 Mick Lohrer *Production Carpenter*
 Johnmichael Bohach *Props Coordinator*
 Jim Burns *Pianist*
 Norman J. Cleary..... *Sound Consultant*
 Anna Maria D'Antonio *Assistant to Choreographer*
 Jerry Dantry *Pianist*
 Sherry Deberson..... *Hair Designer*
 Will Dennis *Production Electrician*
 Christopher Evans *Production Sound*
 Kelly Haywood* *Assistant Stage Manager*
 Tom Helm *Music Director*
 Michael Krug* *Assistant Stage Manager*
 Michael Lichtefeld..... *Choreographer*
 John McLain..... *Lighting Designer*
 Frank Ostrowski *Orchestra Contractor*
 Alicia Reece* *Production Stage Manager*
 Charles Repole..... *Director*
 Richard Rockage *Orchestral Copyist*
 Jeffrey Small *Associate Lighting Designer*
 Kathie Sullivan *Wardrobe Mistress*
 Sean West..... *Production Manager*
 Ruth Zang* *Assistant Stage Manager*

STUDENT STAFF INTERNS

Victoria Bentz *Property Coordination*
 Alexandra Bittle *Marketing & Public Relations*
 Sydney Carter *Lighting Design*
 Martina Caruso *Development*
 Antonio Corona..... *Production Management*
 Samantha Crawford..... *Costume Coordination*
 Cora Defazio..... *Property Coordination*
 Breanna Deutsch..... *Hair Design*
 Anna Fatica..... *Company Management*
 Carissa Gilson *Stage Management*
 Christina King *Education & Outreach*
 Annie Maines *Cabaret Theater*
 Shayna Penn *Stage Management*
 Emily Perri *Video Direction*
 Rachel Pustejovsky..... *Stage Direction*
 Kimberly Roberts *Marketing & Public Relations*
 Christine Sajewski *Special Events/Amininstrative*
 Amanda Slowey..... *Education & Outreach*
 Rebecca Stoll *Sound Design*
 Brooke Wheeler..... *Choreography*
 Jacob Yates..... *Musical Direction*

*Members of the Actors' Equity Association, the union of professional actors and stage managers in the United States



The Director & Choreographer are members of the Stage Directors and Choreographers Society, a national theatrical labor union.



United Scenic Artists represents the designers and scenic painters for the American Theatre.



Backstage and Front of the House Employees are represented by the International Alliance of Theatrical Stage Employees (or I.A.T.S.E.).



The actors and stage managers employed in this production are members of Actors' Equity Association, the union of professional actors and stage managers in the United States.



The musicians employed in this production are members of the American Federation of Musicians.



Pittsburgh CLO received state arts funding support through a grant from the Pennsylvania Council on the Arts, a state agency administering an annual state appropriation for grants to the arts and federal funding from the National Endowment for the Arts.



The Allegheny Regional Asset District, a county agency created to support and finance regional assets, including libraries, parks, cultural groups, sports and civic facilities, and to distribute tax relief to the 128 municipalities of Allegheny County.

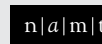


Allegheny Regional Asset District



A great nation deserves great art.

The National Endowment for the Arts is a public agency dedicated to supporting excellence in the arts, both new and established; bringing the arts to all Americans; and providing leadership in arts education. Established by Congress in 1965 as an independent agency of the federal government, the Endowment is the nation's largest annual funder of the arts, bringing great art to all 50 states, including rural areas, inner cities, and military bases.



NATIONAL ALLIANCE for MUSICAL THEATRE



STRATEGIC TECHNOLOGY PARTNER

OF THE

PITTSBURGH CLO!

An MSP Alliance accredited Managed Service Provider and MSPmentor Top Managed IT Service Provider, pioneering Managed Information Technology Solutions for over a decade.



Pittsburgh • Erie • India

www.enkompas.com





Benedum Center Directory

Check Rooms

Coin-operated lockers are located on the Promenade and the Mezzanine Levels.

Emergency Calls

Refer emergency calls to the Benedum Center Security desk at 412-456-2610. Please turn off all cell phones, pagers, PDAs, and other digital devices during the performance and notify your contacts of the emergency number.

Elevator

Located off the Grand Lobby serving all levels of the Center.

Fire Exits

Located at all levels and clearly marked. Use ONLY in case of emergency.

Lost and Found

Call Benedum Center Lost and Found Line at 412-456-2604.

Refreshments

Bars are located on the Gallery and Promenade Levels, as well as the Grand Lobby. Drinks may be purchased prior to performances and during intermission.

Rest Rooms

Lounges for Ladies and Gentlemen are located on the Gallery, Promenade and Mezzanine Levels. Rest rooms for persons with disabilities are located on the Grand Lobby Level.

Smoking

Smoking is not permitted in the theater.

Stage Area

Limited to performers, staff and authorized visitors.

Volunteering

If you are interested in our Volunteer Program or any of the volunteering opportunities within the Pittsburgh Cultural Trust, contact Stacy at 412-456-2601.

Accommodations for Persons with Disabilities

- Wheelchairs are available in the main floor lobby for transition from entrance to seat location. Notice should be given at time of ticket purchase if wheelchair or disabled patron location is required.
- Rest rooms with accessible features are located in the Grand Lobby.
- Guide dogs gladly accommodated. Please inquire at the Box Office when buying tickets.
- Elevator in Grand Lobby serves all levels of the Center.
- Infrared hearing devices are available in the Guest Service Center.

The Box Office at Theater Square

Purchase tickets to all Cultural District performances, regardless of venue or presenting organization at the Box Office at Theater Square. Monday through Saturday, 9am to 9pm; Sunday, Noon to 6pm. For more information, visit www.pgharts.org. The Benedum Center Box Office will be open only on performance days, two hours before curtain time through intermission.

Information and Ticket Charge Number

MasterCard, Visa, Discover and American Express are accepted. TicketCharge operates Monday through Friday, 9am to 6pm; and Saturday and Sunday 12pm to 4pm. Orders received one week in advance will be held for pick-up at the Box Office. The Benedum Center Box Office assesses a \$2.00 per ticket charge for reissuing lost or forgotten tickets. Call 412-456-6666.

Benedum Staff

Vice President OperationsGene Ciavarra
 Operations Manager..... Jacob Bacharach
 Theater Services Director.....K. Susan Sternberger
 Event Services Manager..... Stacy Bartlebaugh-Gmys
 Director of Production Berne Bloom
 Production Manager..... Diane Hines
 Associate Production Manager..... Bryan Briggs
 Stage Technicians Will Dennis, Christopher Evans,
 Mick Lohrer
 Chief Engineer Dennis Curry
 EngineersRobert Flowers, Brett Melisko, Rick Jordan
 Box Office.....Ron Salera, James Meigel,
 Andrew Stowell, Luke Doyle
 Food and Beverage Services:..... Danielle Wojtowicz

Children's Policy

Regardless of age, all patrons must have a ticket. Children under the age of 3 years will not be admitted to the Benedum Center, Byham Theater or Cabaret at Theater Square. All children must be seated with an adult. Any person disrupting a performance or inhibiting the enjoyment of an event for patrons may be removed from the theater without refund.

Make the Most of this Performance

When you attend Pittsburgh CLO performances, please be sure to have sufficient time for travel, parking and construction delays. Latecomers and anyone leaving the theater during the performance will be held in the lobby until a suitable break in the program. Parents, please be considerate of the performers, as well as your fellow audience members. Kindly remove restless children from the theater. Your attentiveness to these concerns is greatly appreciated and will enhance everyone's enjoyment of Pittsburgh CLO performances.

Please turn off all cell phones and electronic devices during the show.

ENJOY FINE DINING WITH
**AWARD WINNING
 CHEF KEVIN WATSON**
 & FIRST CLASS AMENITIES
 AT PITTSBURGH'S
 PREMIERE DINING &
 SOCIAL DESTINATION

BRING IN YOUR
**PITTSBURGH CLO
 TICKET STUB**
 AND RECEIVE A
 COMPLIMENTARY
 APPETIZER

OFFER EXPIRES ON JUNE 14, 2013

SAVOY

MON, WED THRU SAT | 5PM TO 2AM
 SUNDAY BRUNCH | 11AM TO 3 PM

CALL NOW FOR RESERVATIONS
 2623 PENN AVENUE | 412-281-0660 | SAVOYPGH.COM



OYSTER PERPETUAL GMT-MASTER II

ORR'S JEWELERS
rocks.

5857 Forbes Avenue
Pittsburgh PA 15217
412-421-6777

532 Beaver Street
Sewickley PA 15143
412-741-8080


ROLEX